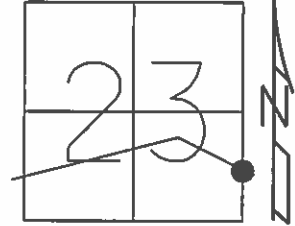


O.D.O.T. DISTRICT 2 SURVEY OFFICE (USE ONLY)

PERSONNEL \_\_\_\_\_ REFERENCE NO. 26 F SHEET 29 OF 34  
 NOTES HOMAN DATE 06-26-2015 ROUTE SR 412  
 H.C. HOMAN WEATHER CLOUDY COUNTY SANDUSKY  
 R.C. LEU TEMP. 70°F TOWNSHIP TOWNSEND  
 \_\_\_\_\_ SECTION 23  
 \_\_\_\_\_ T 5 N R 17 E

TYPE MONUMENT MAG & WASHER  
 ON SURFACE - ~~BELOW~~ ON  
~~LEFT~~ - ℄ PAV'T - RIGHT 0.4'  
9.6' TO RT EDGE PAVEMENT  
 S.L.M. 631+75



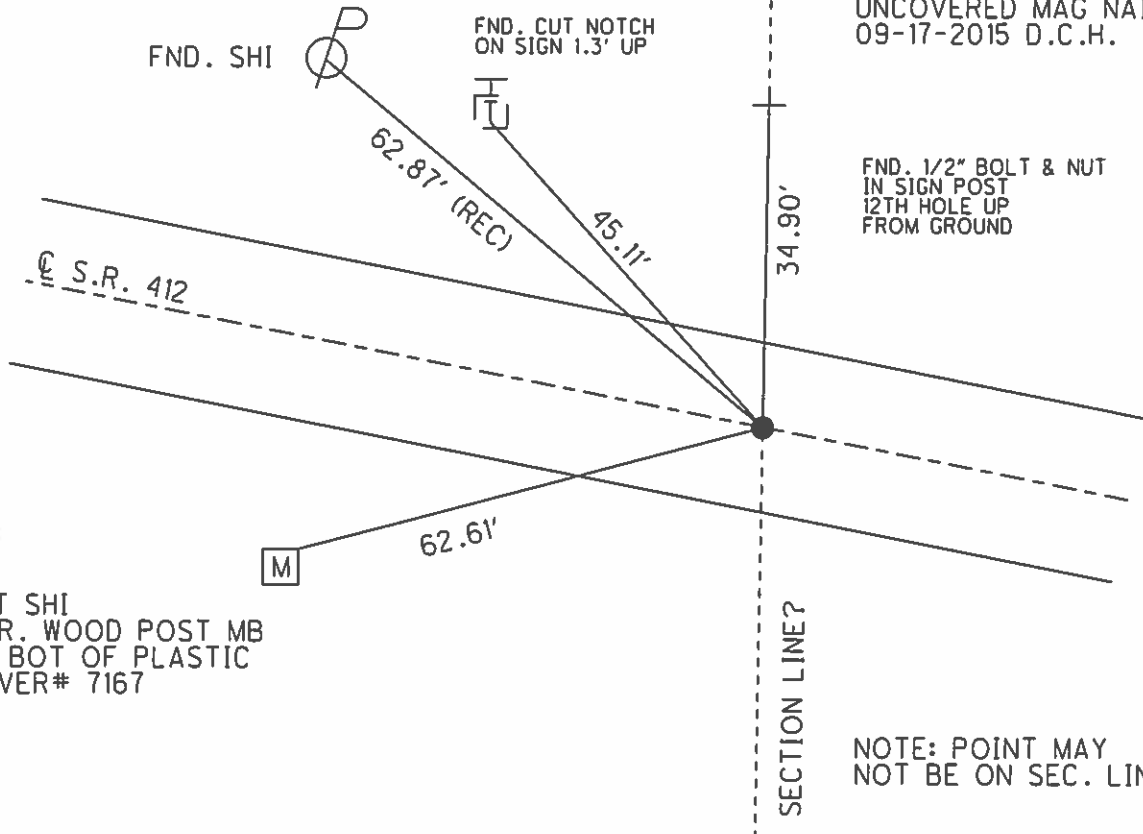
Grid: Northing: 622617.384 Easting: 1870935.580

REC: 04-29-2003  
 NEW POINT ORIGIN  
 UNKNOWN

RESET MAG & WASHER  
 06-03-2003

RESET MAG & WASHER  
 08-18-2003 M.D.B.

UNCOVERED MAG NAIL  
 09-17-2015 D.C.H.



SET SHI  
 COR. WOOD POST MB  
 AT BOT OF PLASTIC  
 COVER# 7167

NOTE: POINT MAY  
 NOT BE ON SEC. LINE

O.D.O.T. DISTRICT 2 SURVEY OFFICE

PERSONNEL

REFERENCE NO. 26-F

SHEET 13 OF 16

NOTES Barnhisel

DATE 04-10-03

ROUTE S.R. 412

H.C. Canterbury

WEATHER Cloudy

COUNTY SANDUSKY

R.C. Brumbaugh

TEMP. +35°

TOWNSHIP TOWNSEND

SECTION 23

T 5 N R 17 E

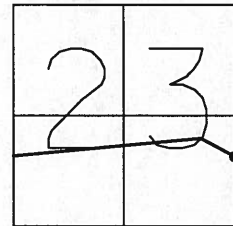
TYPE MONUMENT PK & WASHER

ON SURFACE - ~~BELOW~~ YES

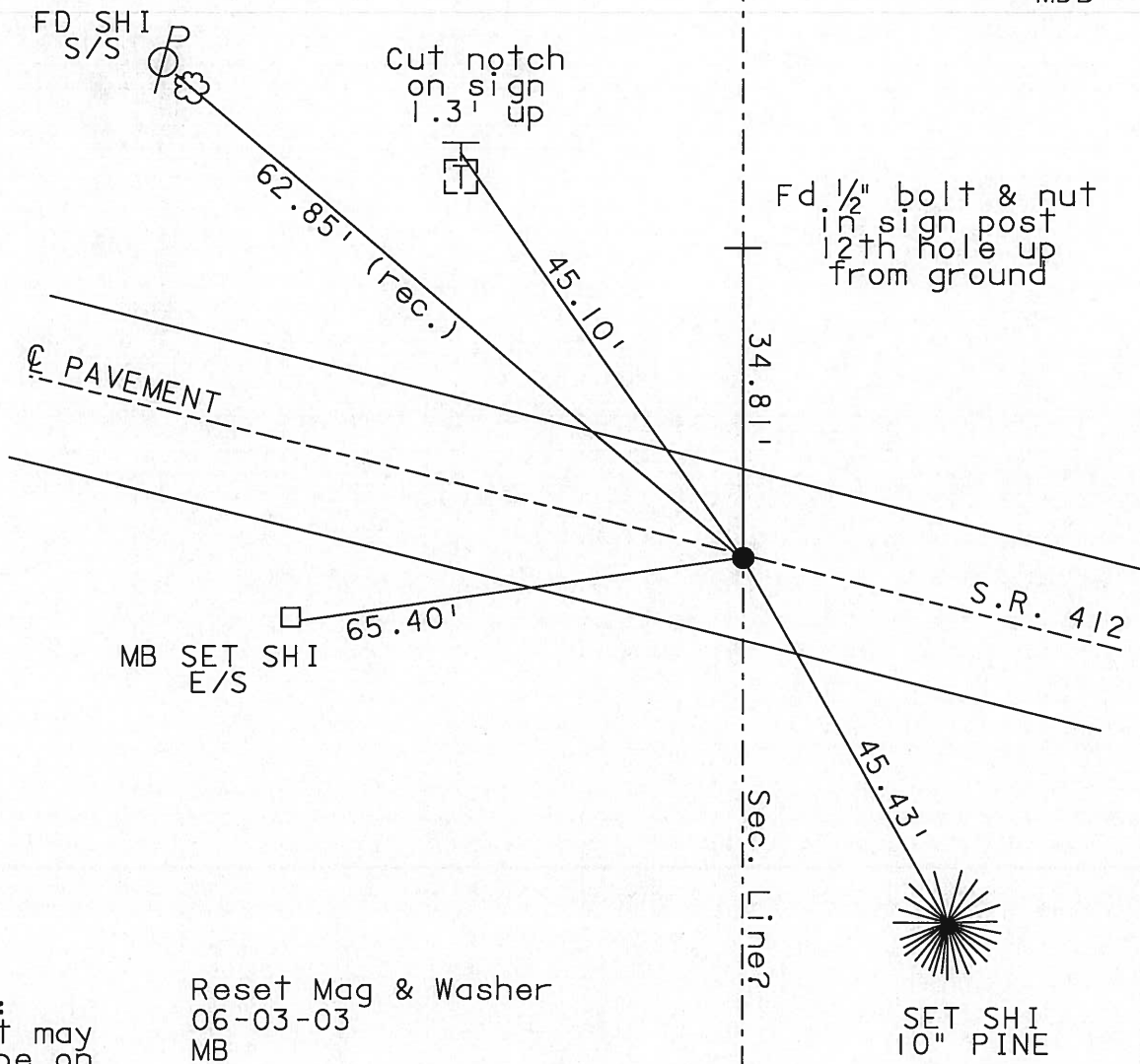
~~LEFT~~ - Q PAV'T - RIGHT 0.4'

9.6' TO RT EDGE PAVEMENT

S.L.M. 631+75



RESET MAG & WASHER  
08/18/03  
MDB



Note:  
Point may  
not be on  
sec. line

Reset Mag & Washer  
06-03-03  
MB

Records 4-29-03 New Point, origin unknown

O.D.O.T. DISTRICT 2 SURVEY OFFICE

PERSONNEL

REFERENCE NO. 26-F

SHEET 13 OF 16

NOTES CHENEY

H.C. RIPPLE

R.C. BARBOUR

GREYMAN

DATE 4-29-1993

WEATHER PARTLY SUNNY

TEMP. 60°

ROUTE #412

COUNTY SANDUSKY

TOWNSHIP TOWNSEND

SECTION 23 OR 24

T5N R17E

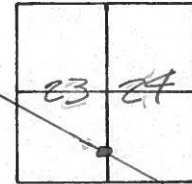
TYPE MONUMENT PE. SPK

~~ON~~ SURFACE - BELOW 2"±

~~LEFT - & PAV'T. - RIGHT~~ ON

10± TO R. EDGE PAVEMENT

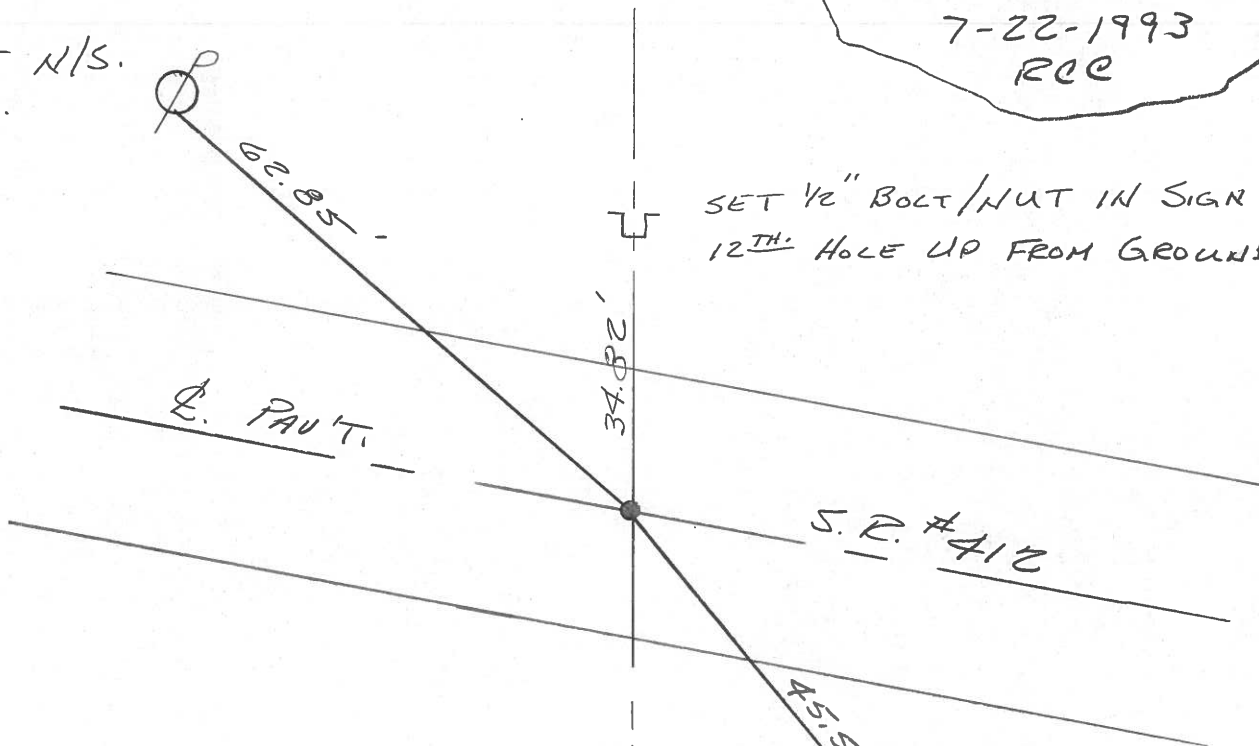
S.L.M. 631+75



NEW POINT - ORIGIN UNKNOWN

SET PK/WASHER  
7-22-1993  
RCC

SET N/S.  
S.



SET 1/2" BOLT/NUT IN SIGN POST  
12TH. HOLE UP FROM GROUND

S.R. #412

\* NOTE: POINT MAY NOT  
BE ON SECTION  
LINE.

4" PINE  
USED TRUNK (N.W.)  
1' UP FROM  
GROUND

SECTION LINE ?