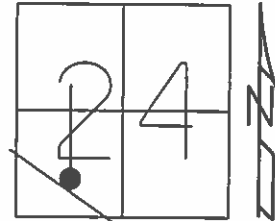


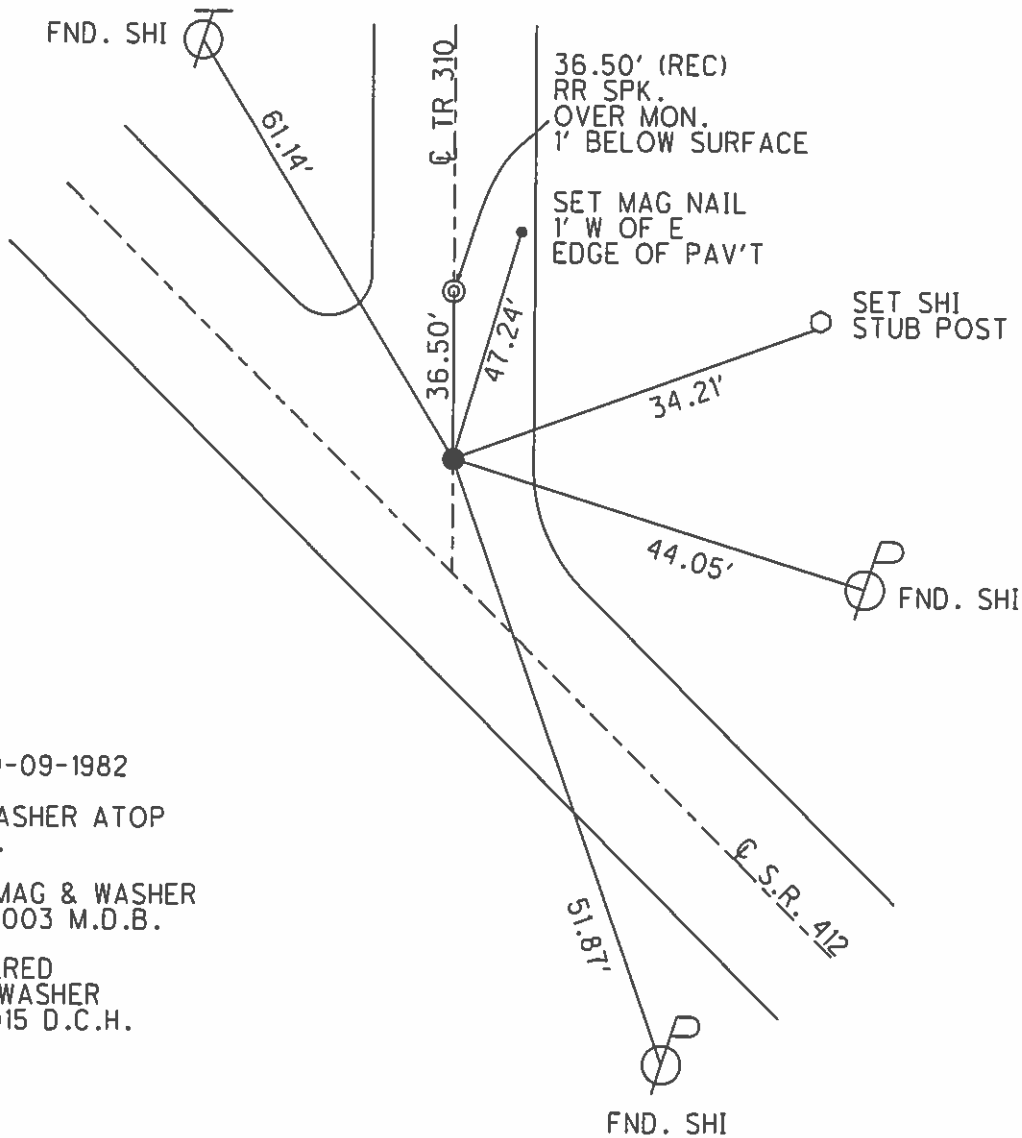
O.D.O.T. DISTRICT 2 SURVEY OFFICE (USE ONLY)

PERSONNEL	REFERENCE NO.	<u>29</u>	SHEET	<u>30</u>	OF	<u>34</u>
NOTES	<u>HOMAN</u>	DATE	<u>06-26-2015</u>	ROUTE	<u>SR 412</u>	
H.C.	<u>HOMAN</u>	WEATHER	<u>CLOUDY</u>	COUNTY	<u>SANDUSKY</u>	
R.C.	<u>LEU</u>	TEMP.	<u>70°F</u>	TOWNSHIP	<u>TOWNSEND</u>	
				SECTION	<u>24</u>	
				T	<u>5</u>	R
					<u>17</u>	E

TYPE MONUMENT MAG & WASHER  
 ON SURFACE - ~~BELOW~~ ON  
 LEFT - ☉ PAV'T - ~~RIGHT~~ 1.3'  
11.6' TO RT EDGE PAVEMENT  
 S.L.M. 639+85



Grid: Northing: 622141.354 Easting: 1871590.350



REC: 09-09-1982  
 P.O.T.  
 PK & WASHER ATOP  
 RR SPK.

RESET MAG & WASHER  
 08-18-2003 M.D.B.

UNCOVERED  
 MAG & WASHER  
 9-17-2015 D.C.H.

O.D.O.T. DISTRICT 2 SURVEY OFFICE

PERSONNEL

NOTES Barnhisel  
 H.C. Canterbury  
 R.C. Barnhisel  
Brumbaugh

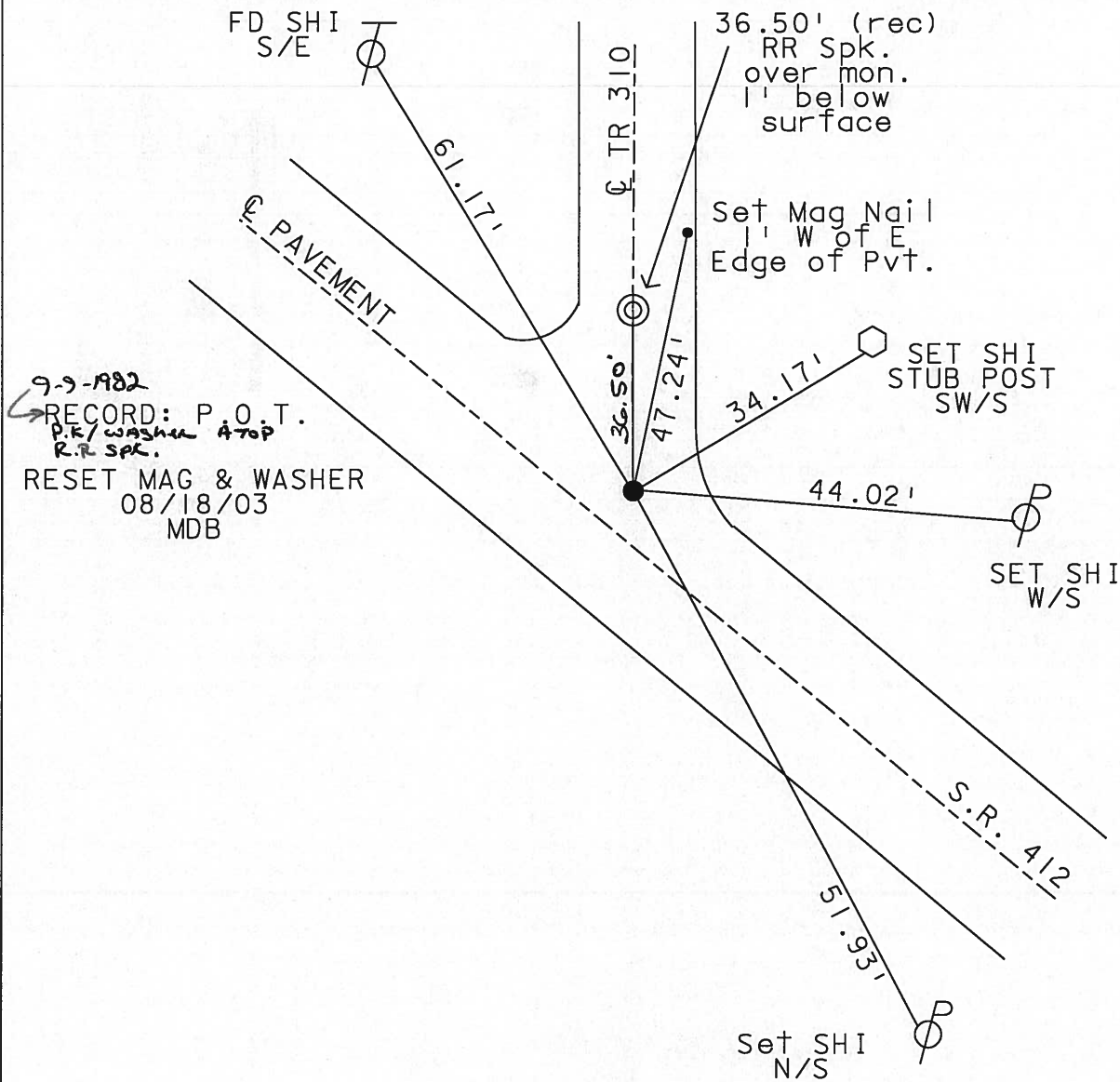
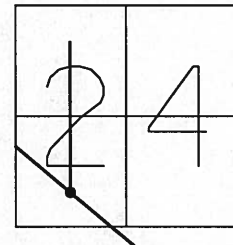
REFERENCE NO. 29

DATE 04-10-03  
 WEATHER Cloudy/Windy  
 TEMP. +40°

SHEET 14 OF 16

ROUTE S.R. 412  
 COUNTY SANDUSKY  
 TOWNSHIP TOWNSEND  
 SECTION 24  
T 5 N R 17 E

TYPE MONUMENT PK NAIL  
 ON SURFACE - ~~BELOW~~ YES  
 LEFT - Q PAV'T - ~~RIGHT~~ 1.3'  
11.6' TO RT EDGE PAVEMENT  
 S.L.M. 639+85



O.D.O.T. DISTRICT 2 SURVEY OFFICE

PERSONNEL

REFERENCE NO. 29

SHEET 14 OF 16

NOTES CHENEY

H.C. RIPPLE

R.C. BARBOUR

GEYMAN

DATE 4-29-1993

WEATHER PARTLY SUNNY

TEMP. 60°

ROUTE #412

COUNTY SANDUSKY

TOWNSHIP TOWNSEND

SECTION 24

T5 N R 17 E

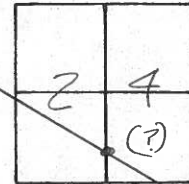
TYPE MONUMENT PK/WASHER

ON SURFACE - ~~BELOW~~ ON

LEFT-CL PAV'T. - ~~RIGHT~~ 2' ±

12' ± TO RT. EDGE PAVEMENT

S.L.M. 639+85

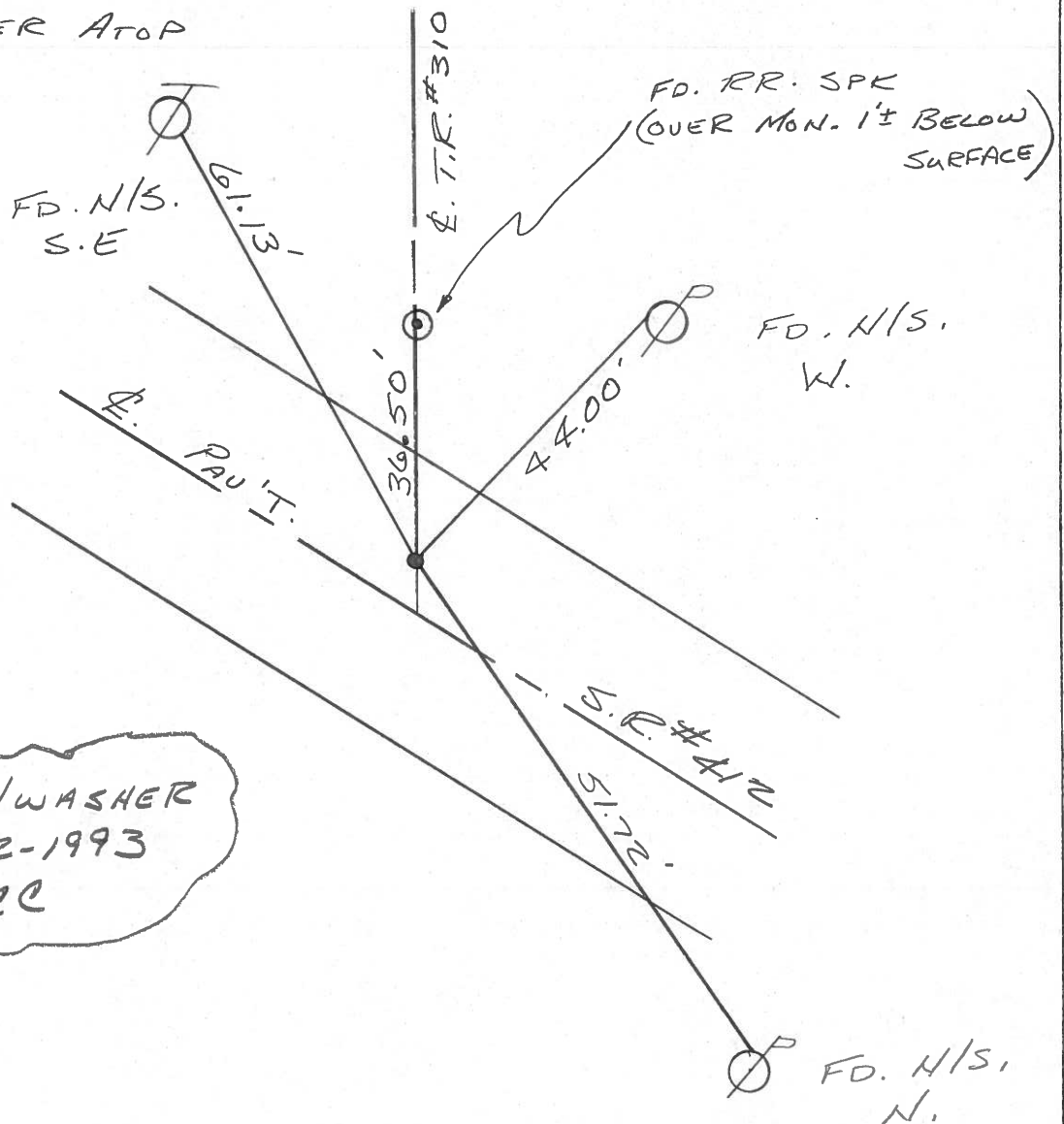


RECORD: 9-9-1982

P.O.T.

SET PK/WASHER ATOP

R.R. SPK.



12

Q.D.O.T. DISTRICT 2 SURVEY OFFICE

Sht. \_\_\_ of \_\_\_

County Sandusky S.R. 412

Date 9/9/82 Drawn 9/16/82

Township Townsend

Weather sunny

Section #

Temp. 68°

T5N, R12E

Personnel Cronin

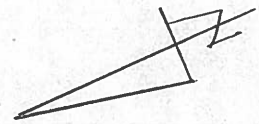
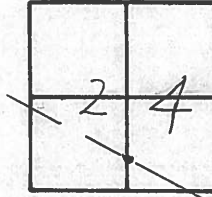
Ripple

Geyman

Mossey

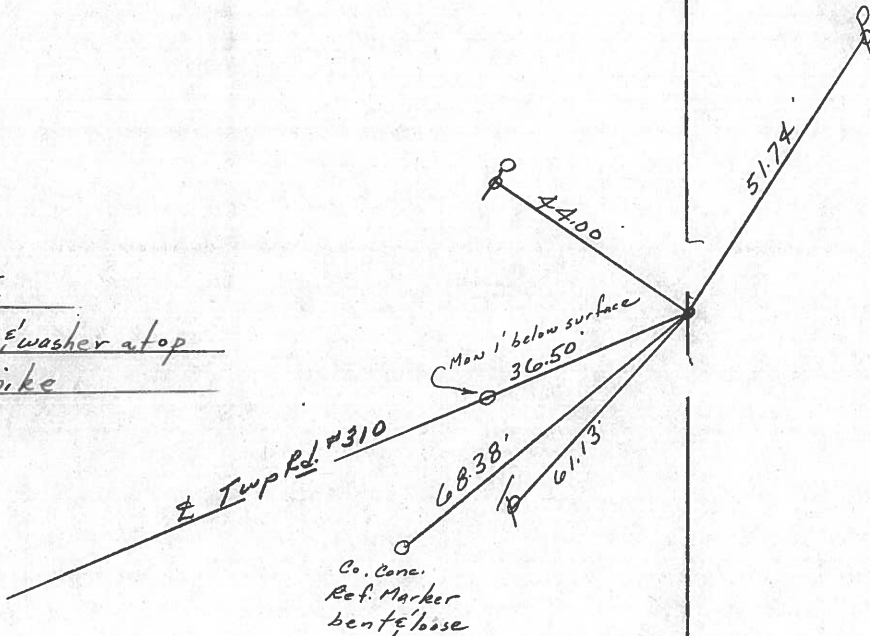
Barbour

#29



P.O.T.

Set P.K. & washer atop  
R.R. spike



R/R/W S.R. # 412

PERSONNEL	TITLE	PERSONNEL	TITLE
Cronin		Schneider	
Ash		Mosser	
Ripple		Barbour	
Geyman			

COUNTY Sandusky

DATE 5/1/75  
4/30/75

S. R. # 412

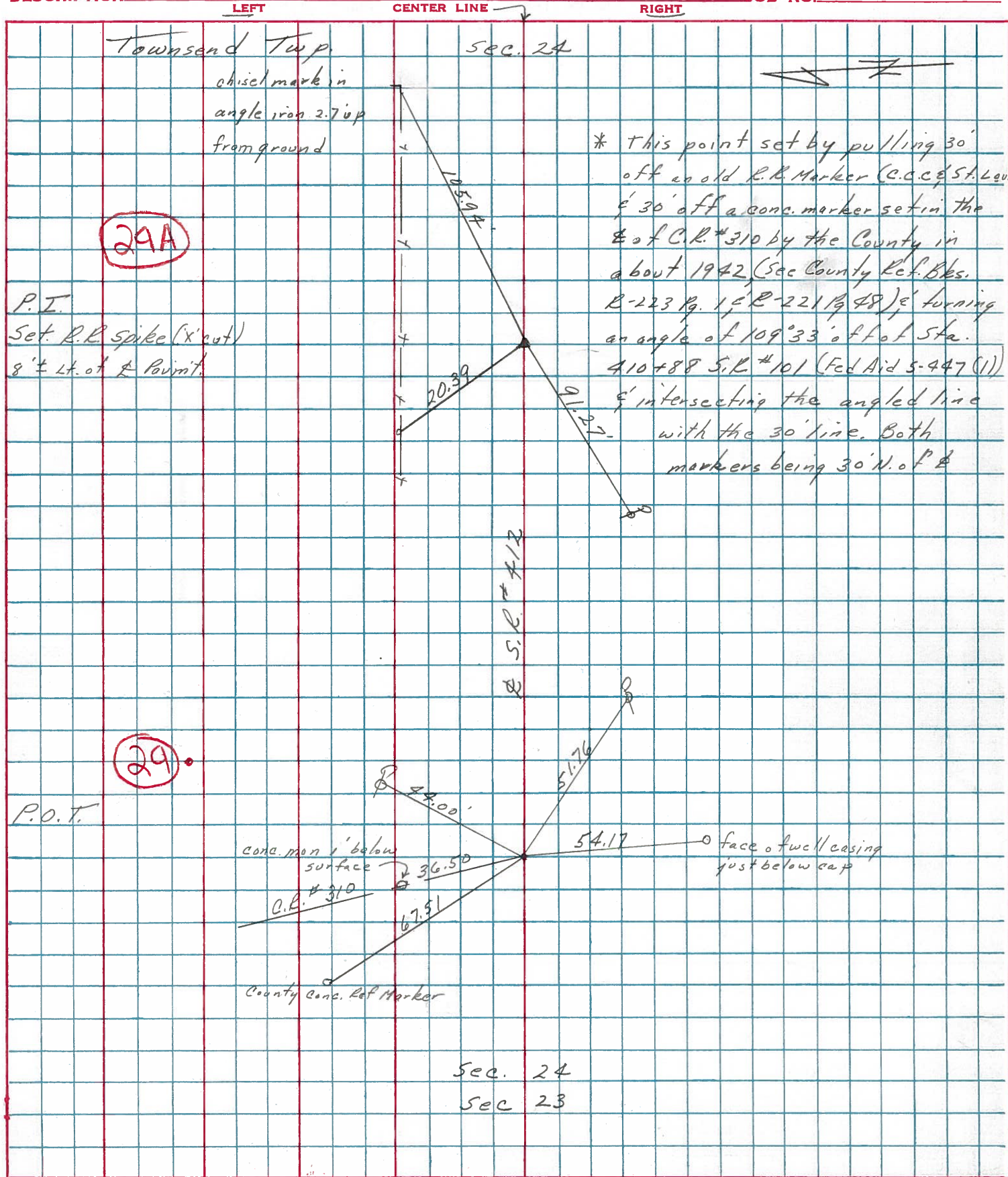
WEATHER sunny

SEC. \_\_\_\_\_

TEMP. 55°

DESCRIPTION Ties for Control Points

JOB NO. \_\_\_\_\_



29A

P.I.  
Set. R.R. spike (x'out)  
8'± Lt. of P. Point.

29

P.O.T.

conc. man 1' below surface

C.C. # 310

County Conc. Ref Marker

\* This point set by pulling 30' off an old R.R. Marker (C.C. # 51. Lev. 30' off a conc. marker set in the E of C.R. # 310 by the County in about 1942, (See County Ref. Bks. R-223 Pg. 1, R-221 Pg. 48), turning an angle of 109°33' off of Sta. 410+88 S.R. # 101 (Fed Aid 5-447 (1)) & intersecting the angled line with the 30' line. Both markers being 30' N. of E

Sec. 24

Sec 23

PERSONNEL TITLE PERSONNEL TITLE

Schneider  
Mosser  
Geyman

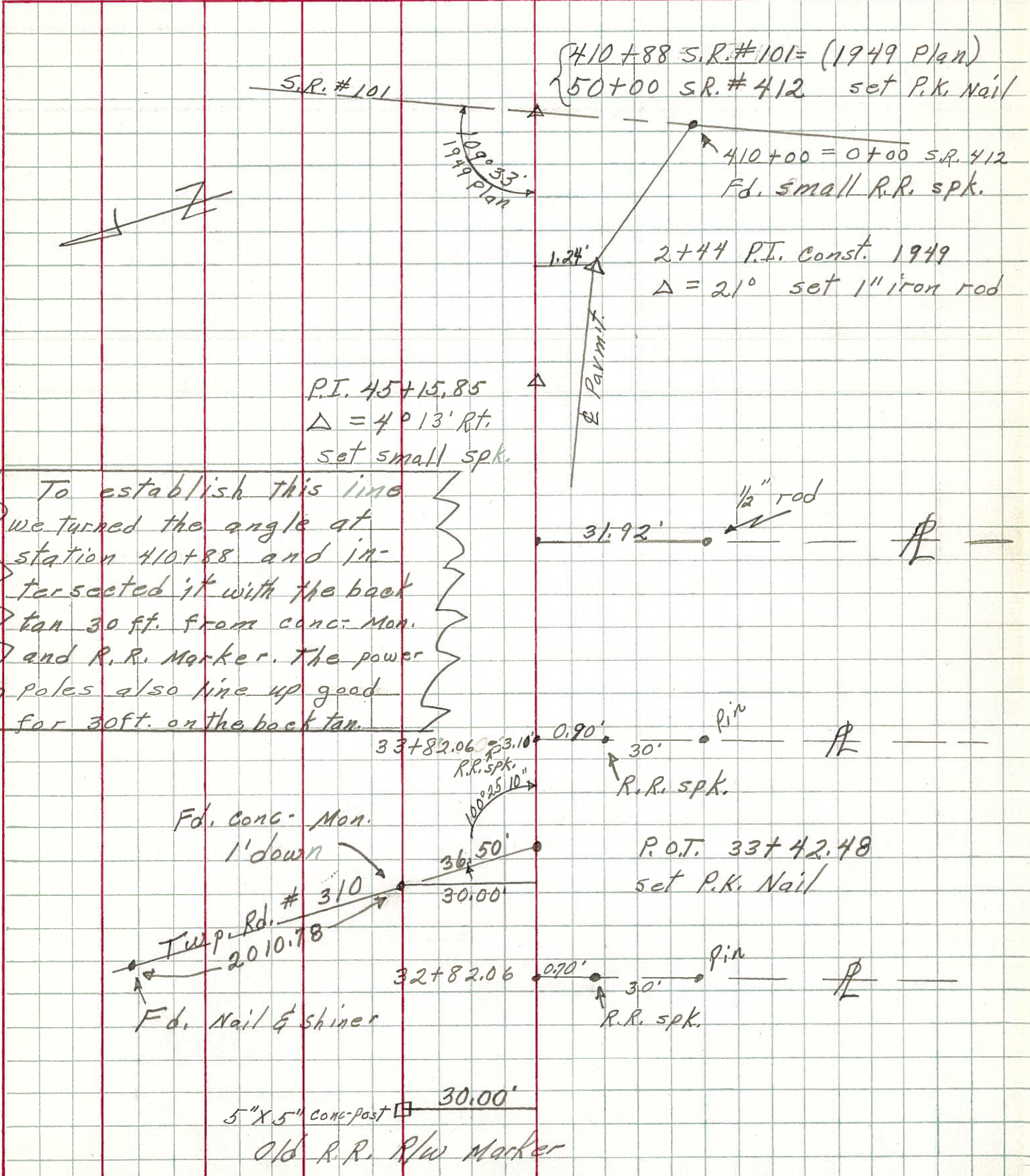
COUNTY Sandusky DATE 7-9-72

S. R. 412 WEATHER Hot

SEC. 24 TEMP. 88°

DESCRIPTION Townsend Twp. JOB NO. \_\_\_\_\_

LEFT CENTER LINE RIGHT

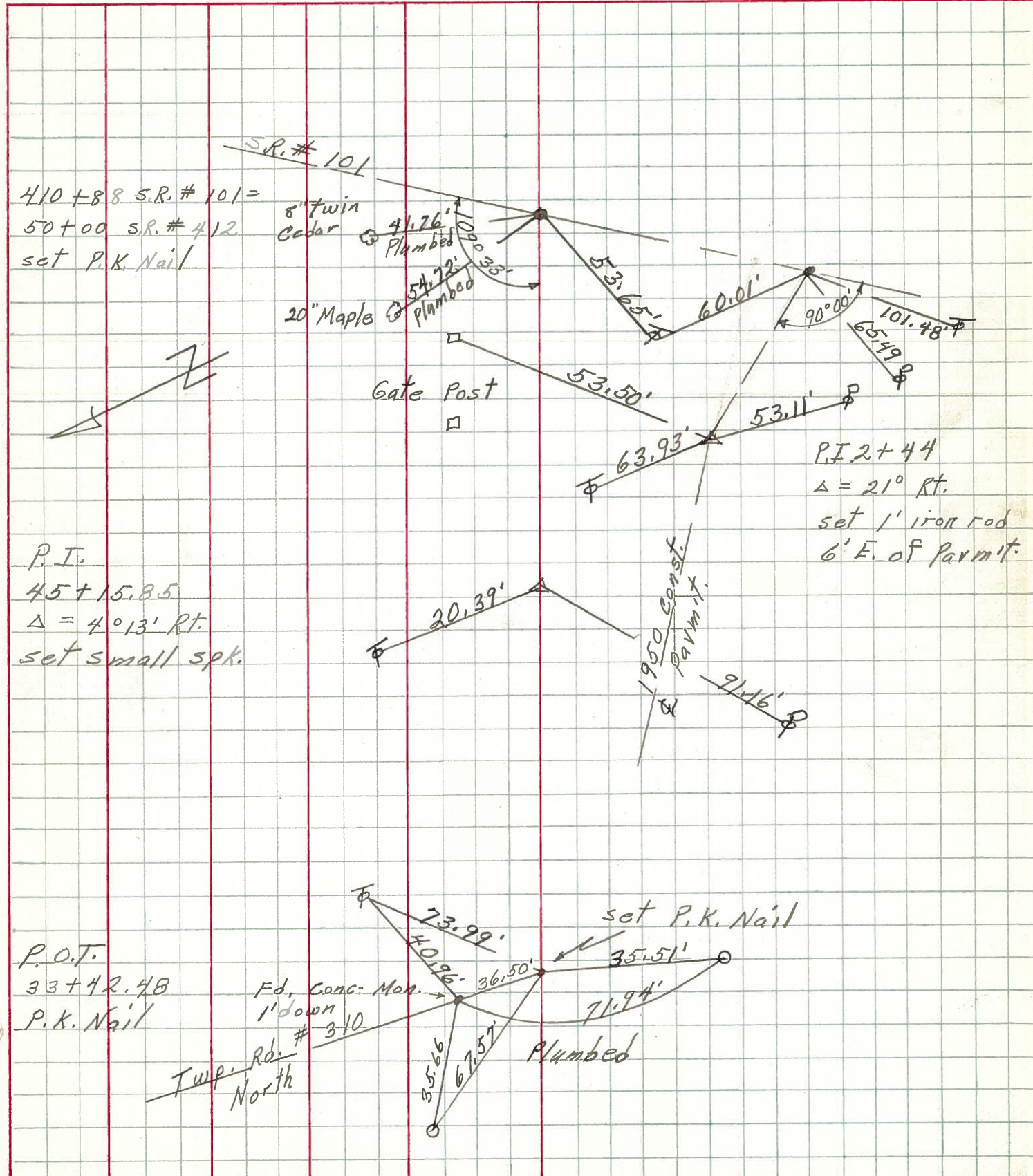


To establish this line we turned the angle at station 410+88 and intersected it with the back tan 30 ft. from conc. Mon. and R.R. Marker. The power poles also line up good for 30ft. on the back tan.

PERSONNEL	TITLE	PERSONNEL	TITLE
<u>Schneider</u>			
<u>Barbour</u>			
<u>Geyman</u>			

COUNTY Sandusky DATE 7-17-72  
 S. R. 412 WEATHER Hot  
 SEC. 24 TEMP. 88°

DESCRIPTION Townsend Twp. JOB NO. \_\_\_\_\_  
 LEFT CENTER LINE RIGHT



410 + 88 S.R. # 101 =  
 50 + 00 S.R. # 412  
 set P.K. Nail

8" twin Cedar @ 41.26' Plumbed  
 20" Maple @ 54.72' Plumbed

Gate Post

P.I. 2 + 44  
 $\Delta = 21^\circ$  Rt.  
 set 1' iron rod  
 6' E. of Parmit.

P.T.  
 45 + 15.85  
 $\Delta = 4^\circ 13'$  Rt.  
 set small spk.

1950 Const. Parmit.  
 91.46'

P.O.T.  
 33 + 42.48  
 P.K. Nail

Fd. Conc. Mon. 1' down  
 # 310

Twp. Rd. North

Plumbed

set P.K. Nail