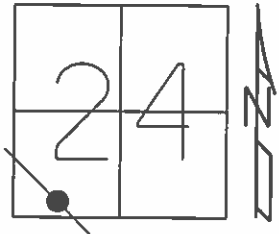


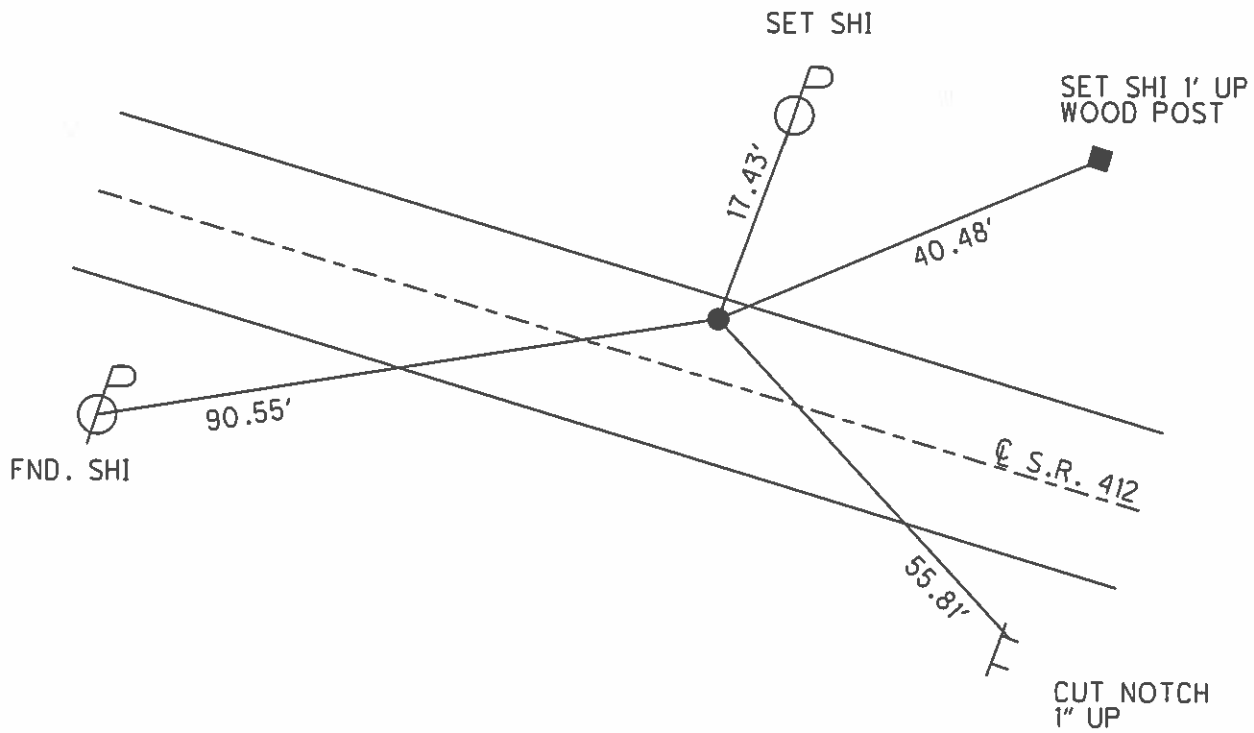
O.D.O.T. DISTRICT 2 SURVEY OFFICE (USE ONLY)

PERSONNEL _____ REFERENCE NO. 29A SHEET 31 OF 34
 NOTES HOMAN DATE 06-26-2015 ROUTE SR 412
 H.C. HOMAN WEATHER CLOUDY COUNTY SANDUSKY
 R.C. LEU TEMP. 70°F TOWNSHIP TOWNSEND
 SECTION 24
 T 5 N R 17 E

TYPE MONUMENT MAG NAIL
 ON SURFACE - ~~BELOW~~ ON _____
 LEFT - ☉ PAV'T - ~~RIGHT~~ 7.3'
3.2' TO LT EDGE PAVEMENT
 S.L.M. 651+60
 Grid: Northing: 621451.984 Easting: 1872538.883



REC: 09-09-1982
 P.I.
 RR SPK 0.1' BELOW SURFACE
 RESET MAG & WASHER
 08-18-2003 M.D.B.
 UNCOVERED MAG NAIL
 09-17-2015 D.C.H.



O.D.O.T. DISTRICT 2 SURVEY OFFICE

PERSONNEL

REFERENCE NO. 29-A

SHEET 15 OF 16

NOTES Barnhisel

DATE 04-10-03

ROUTE S.R. 412

H.C. Canterbury

WEATHER Cloudy/Windy

COUNTY SANDUSKY

R.C. Barnhisel

TEMP. +40°

TOWNSHIP TOWNSEND

Brumbaugh

SECTION 24

T 5 N R 17 E

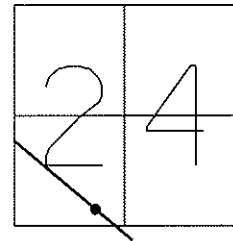
TYPE MONUMENT PK NAIL

ON SURFACE - ~~BELOW~~ YES

LEFT - Q PAV'T - ~~RIGHT~~ 7.3'

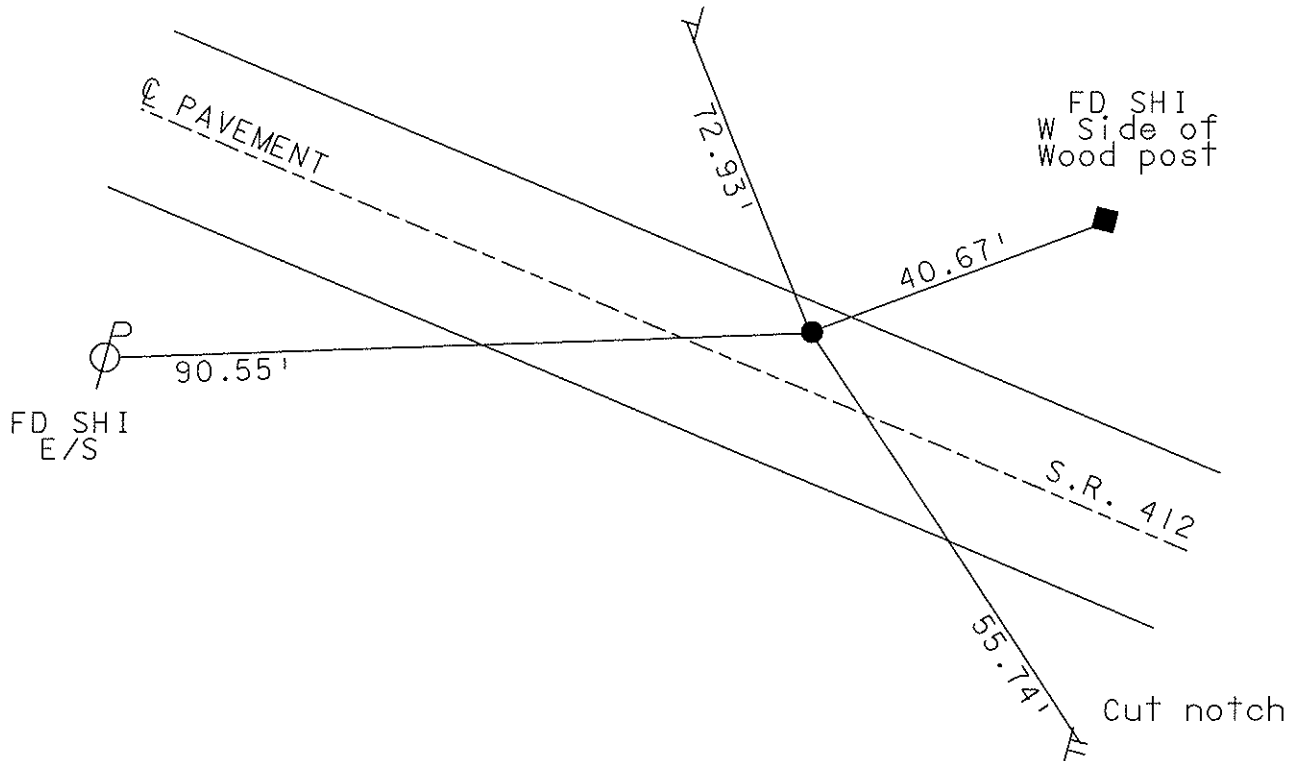
3.2' TO LT EDGE PAVEMENT

S.L.M. 651+60



RESET MAG & WASHER
08/18/03
MDB

Cut notch
Weight Limit



Record: 09-09-1982

PI
RR spk 0.1' below surface, 8' +/- LT of Q Pvt. This point was set by pulling 30' off an old R/W marker in the Q of CR 310 by county (1942 +/-, Ref. Co. Field books; R223 pg 1, R221 pg 48), both markers being N of Q & turning an angle of 109°33' off of sta 410+88 SR 101 (FED. AID5-447(1) Plans Dated: 1949-1950) & Intersecting the angle line with the 30' line.

O.D.O.T. DISTRICT 2 SURVEY OFFICE

PERSONNEL

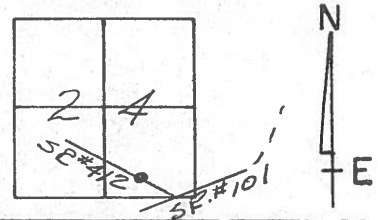
REFERENCE NO. 29-A SHEET 15 OF 16

NOTES CHENEY
 H.C. RIPPLE
 R.C. BARBOUR
GEYMAN

DATE 4-29-1993
 WEATHER PARTLY SUNNY
 TEMP. 60°

ROUTE # 412
 COUNTY SANDUSKY
 TOWNSHIP TOWNSEND
 SECTION 24
T 5 N R 17 E

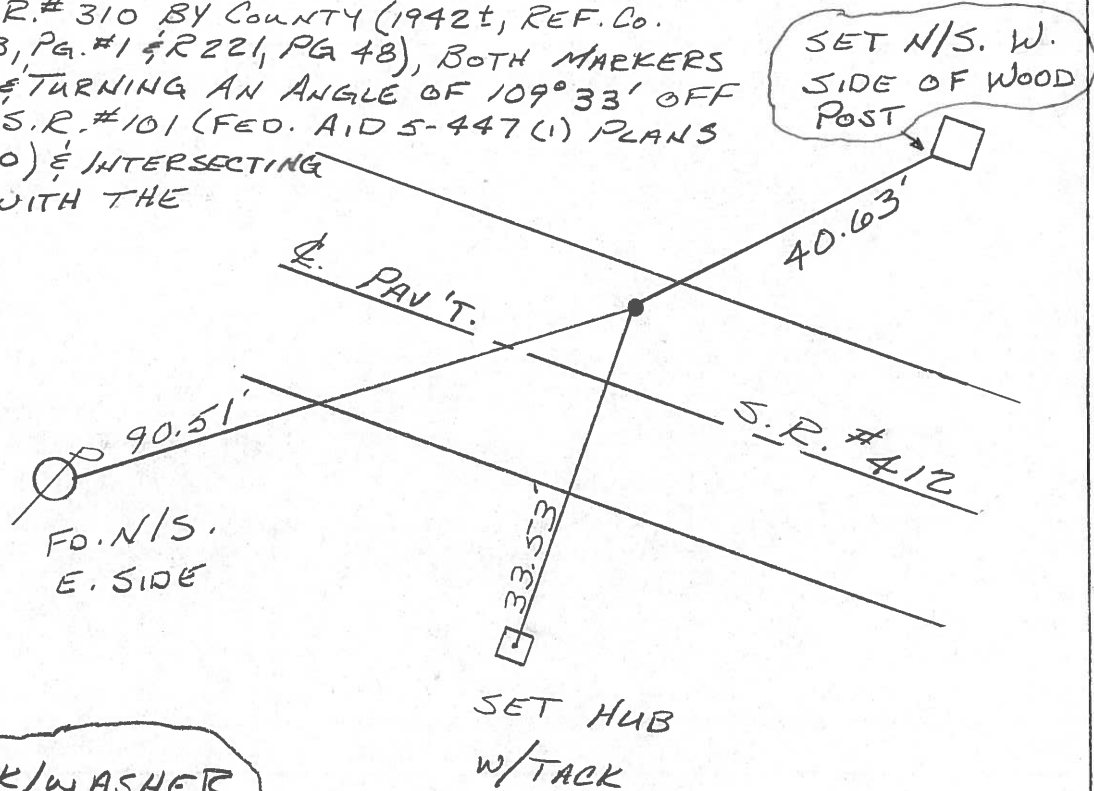
TYPE MONUMENT BROKEN P.K.
 ON SURFACE - BELOW ON
 LEFT-CL PAV'T. - RIGHT 7'
3' TO LT EDGE PAVEMENT
 S.L.M. 651+60



RECORD: 9-9-1982

P.I.

R.R. SPK. 0.1' BELOW SURFACE, 8' LT. OF CL PAV'T.
 *THIS POINT WAS SET BY PULLING 30' OFF AN OLD R/W. MARKER
 (C.C.C. & ST. LOUIS R.R.) & 30' OFF A R/W. MARKER SET
 IN THE CL. OF C.R. # 310 BY COUNTY (1942, REF. CO.
 FIELD BKS. R223, PG. #1 & R221, PG 48), BOTH MARKERS
 BEING N. OF CL. & TURNING AN ANGLE OF 109° 33' OFF
 OF STA. 410+88 S.R. #101 (FED. AID 5-447(1) PLANS
 DATED: 1949-1950) & INTERSECTING
 THE ANGLE LINE WITH THE
 30' LINE.



SET PK/WASHER
 7-22-1993
 RCC

County Sandusky S.R. # 412

Date 9/9/82 Drawn 10/06/82

Township Townsend

Weather sunny

Section 24

Temp. 68°

T5N, R17E

Personnel Cronin

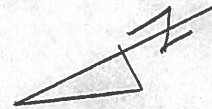
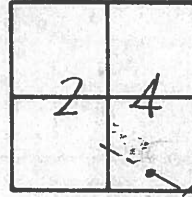
Ripple

Geyman

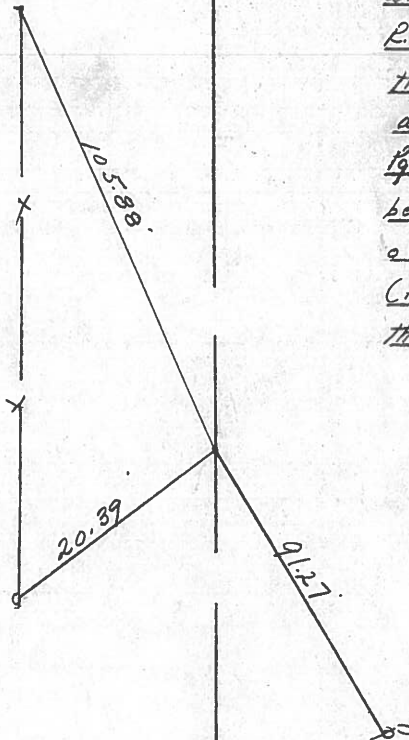
Mosser

Barboor

#29-A



* This point was set by pulling 30' off an old R.R. Marker (C.C.C. & St. Louis R.R.) 30' off a R/W Marker set in the E of C.R. #310 by the County about 1942, (Ref. Co. Field Bks R-223 Pg. 1, R-221, Pg. 48), both markers being north of E, & turning an angle of 109°33' off of Sta. 410+88 S.R. #101 (Fed. Aid 5-447(V) Plans) ¹⁹⁴⁹⁻¹⁹⁵⁰ & intersecting the angled line with the 30' line.



E R/W S.R. # 412

P.I.

R.R. spike 0.1' below surface - 8' ± of E of pavement

PERSONNEL	TITLE	PERSONNEL	TITLE
Cronin		Schneider	
Ash		Masser	
Ripple		Barbour	
Geyman			

COUNTY Sandusky

DATE 5/1/75
4/30/75

S. R. # 412

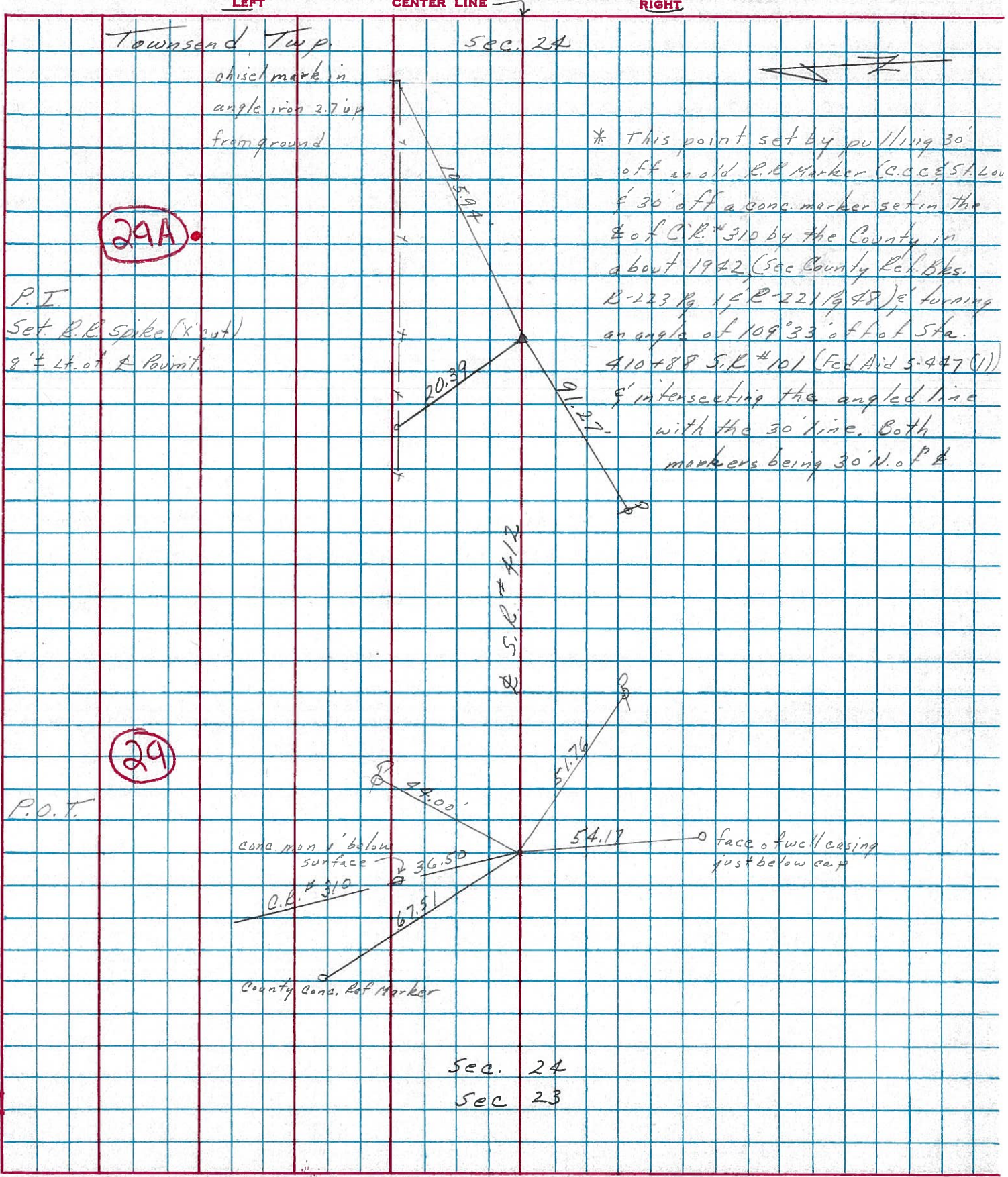
WEATHER sunny

SEC.

TEMP. 55°

DESCRIPTION Ties for Control Points

JOB NO.



PERSONNEL TITLE PERSONNEL TITLE

Schneider
Mosser
Geyman

COUNTY Sandusky DATE 7-9-72

S. R. 412 WEATHER Hot

SEC. 24 TEMP. 88°

DESCRIPTION

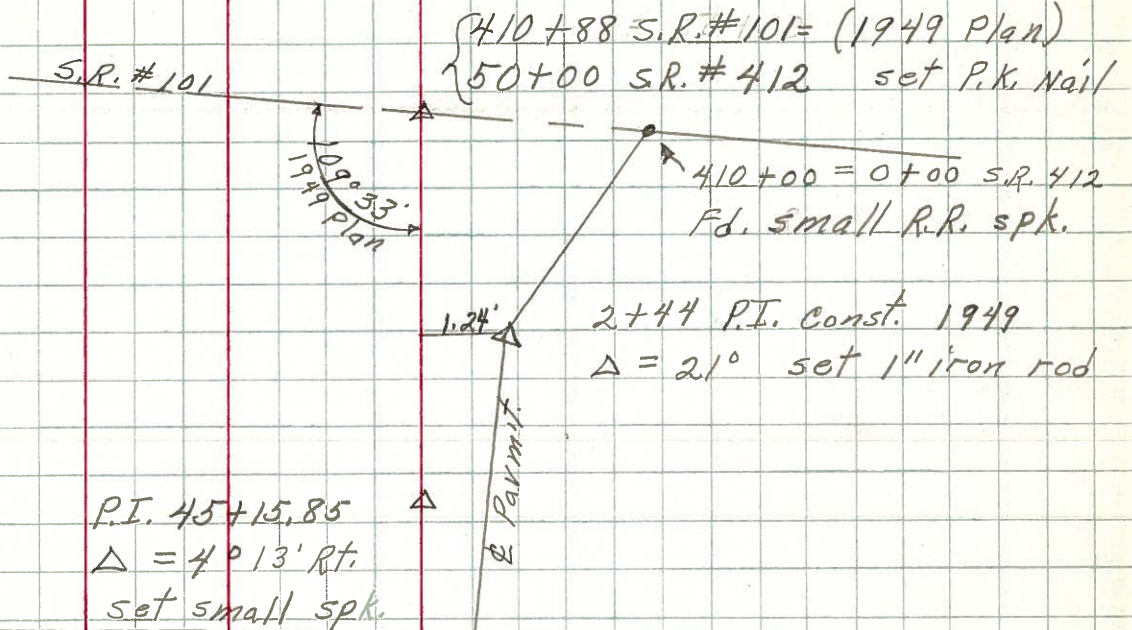
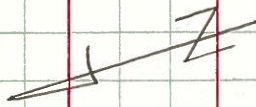
Townsend Twp.

JOB NO.

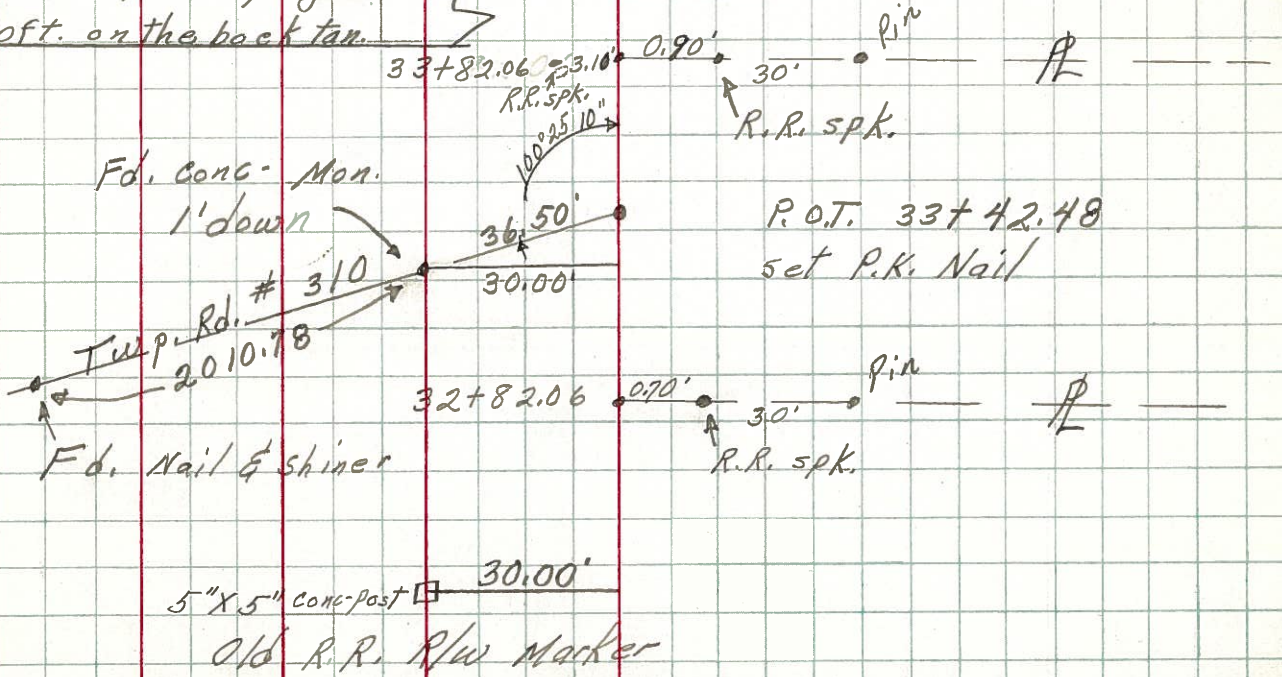
LEFT

CENTER LINE

RIGHT



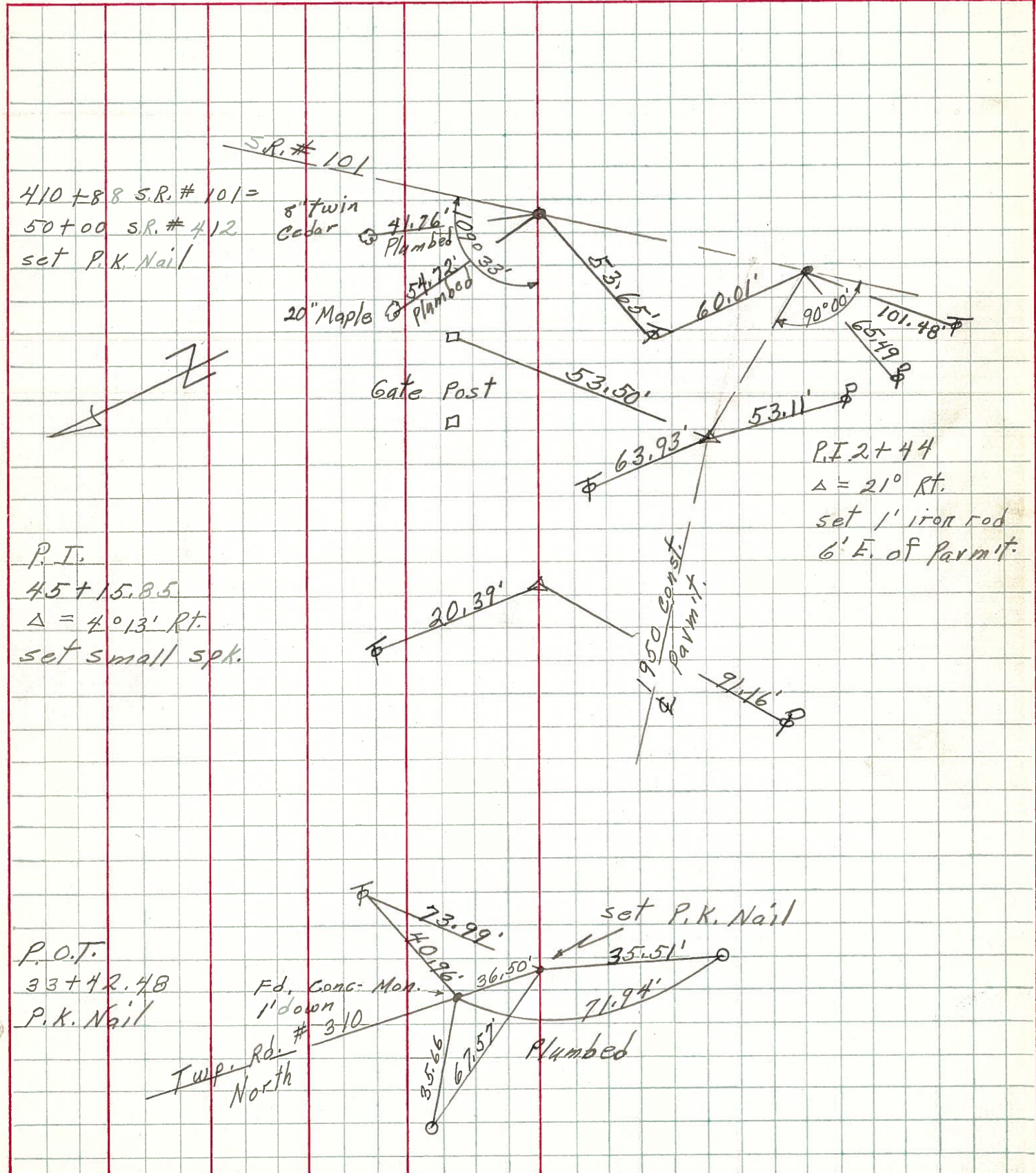
To establish this line we turned the angle at station 410+88 and intersected it with the back tan 30 ft. from conc. Mon. and R.R. Marker. The power poles also line up good for 30ft. on the back tan.



PERSONNEL	TITLE	PERSONNEL	TITLE
<u>Schneider</u>			
<u>Barbour</u>			
<u>Geyman</u>			

COUNTY Sandusky DATE 7-17-72
 S. R. 412 WEATHER Hot
 SEC. 24 TEMP. 88°

DESCRIPTION Townsend Twp. JOB NO. _____
 LEFT CENTER LINE RIGHT



410+88 S.R. # 101 =
 50+00 S.R. # 412
 set P.K. Nail

P.T.
 45+15.85
 $\Delta = 4^\circ 13' \text{ Rt.}$
 set small spk.

P.O.T.
 33+42.48
 P.K. Nail

Twp. Rd.
 North

Fd. Conc. Mon.
 1' down
 # 310

P.I. 2+44
 $\Delta = 21^\circ \text{ Rt.}$
 set 1' iron rod
 6' E. of Parmit.