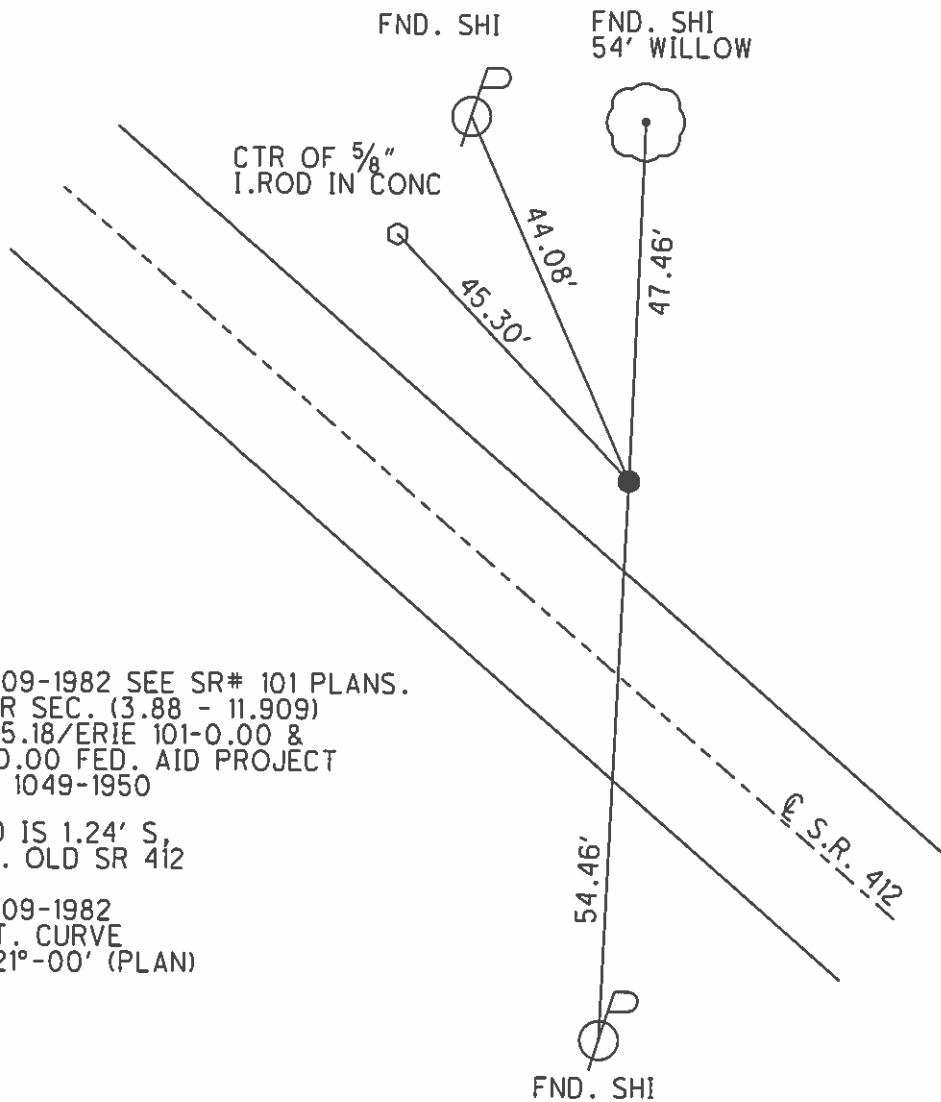
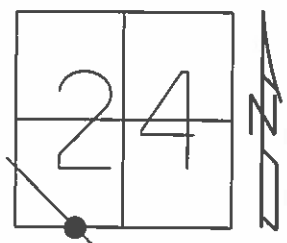


O.D.O.T. DISTRICT 2 SURVEY OFFICE (USE ONLY)

PERSONNEL \_\_\_\_\_ REFERENCE NO. 30 SHEET 32 OF 34  
 NOTES HOMAN DATE 06-26-2015 ROUTE SR 412  
 H.C. HOMAN WEATHER CLOUDY COUNTY SANDUSKY  
 R.C. LEU TEMP. 70°F TOWNSHIP TOWNSEND  
 \_\_\_\_\_ SECTION 24  
 \_\_\_\_\_ T 5 N R 17 E

TYPE MONUMENT 1" IPIN  
~~ON SURFACE~~ - BELOW 0.1'  
 LEFT - CL PAV'T - ~~RIGHT~~ 16.4'  
6.1' TO LT EDGE PAVEMENT  
 S.L.M. 653+84

Grid: Northing: 621305.491 Easting: 1872710.071



REC: 09-09-1982 SEE SR# 101 PLANS.  
 POST WAR SEC. (3.88 - 11.909)  
 SAN-12-25.18/ERIE 101-0.00 &  
 ERIE-12-0.00 FED. AID PROJECT  
 S-447 (1) 1049-1950

REC: ROD IS 1.24' S,  
 FROM CL. OLD SR 412

REC: 09-09-1982  
 PI CONST. CURVE  
 DELTA= 21°-00' (PLAN)  
 (2+44)

O.D.O.T. DISTRICT 2 SURVEY OFFICE

PERSONNEL

REFERENCE NO. 30

SHEET 16 OF 16

NOTES Barnhise

DATE 04-10-03

ROUTE S.R. 412

H.C. Canterbury

WEATHER Cloudy/Windy

COUNTY SANDUSKY

R.C. Barnhise

TEMP. +40°

TOWNSHIP TOWNSEND

Brumbaugh

SECTION 24

T 5 N R 17 E

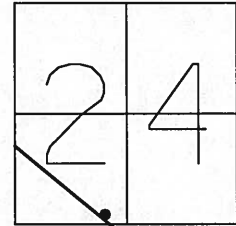
TYPE MONUMENT 1" IRON ROD

~~ON SURFACE~~ - BELOW 0.5'

LEFT - Q PAV'T - ~~RIGHT~~ 16.4'

6.1' LT OF LT EDGE PAVEMENT

S.L.M. 653+84

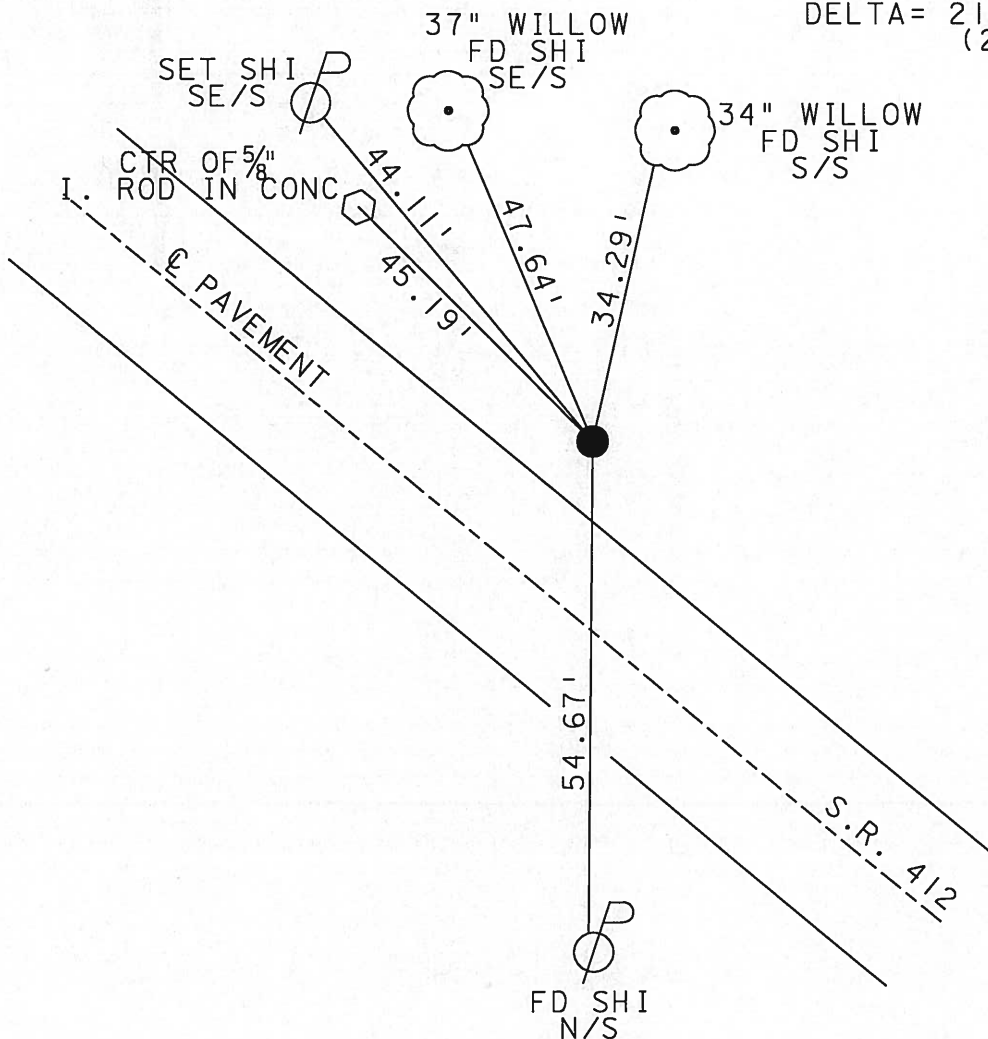


9-9-1982

RECORD: SEE SR #101 PLANS.  
POST WAR SEC. (3.88-11.90)  
SAN-12-25.18/ERIE 101-0.00 &  
ERIE-12-0.00 FED. AID PROJECT  
S-447 (1) 1049-1950

RECORD: ROD IS 1.24' S,  
FROM CL. OLD SR 412

RECORD: 09/09/1982  
PI CONST. CURVE  
DELTA= 21°-00' (PLAN)  
(2+44)



# O.D.O.T. DISTRICT 2 SURVEY OFFICE

PERSONNEL

REFERENCE NO. 30

SHEET 16 OF 16

NOTES CAENEY

H.C. RIPPLE

DATE 4-29-1993

ROUTE # 412

R.C. BARBOUR

WEATHER PARTLY SUNNY

COUNTY SANDUSKY

GEYMAN

TEMP. 60°

TOWNSHIP TOWNSEND

SECTION 24

T5N R 17E

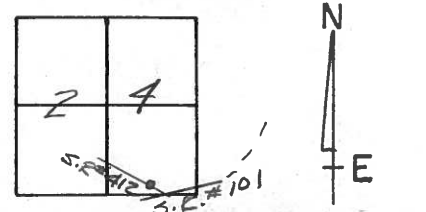
TYPE MONUMENT 1" IRON ROD

ON SURFACE - ~~BENCH~~ ON

LEFT- & PAV'T. - ~~RIGHT~~ 16'

6.5' RT. TO LT. EDGE PAVEMENT

S.L.M. 653+84



RECORD: 9-9-1982

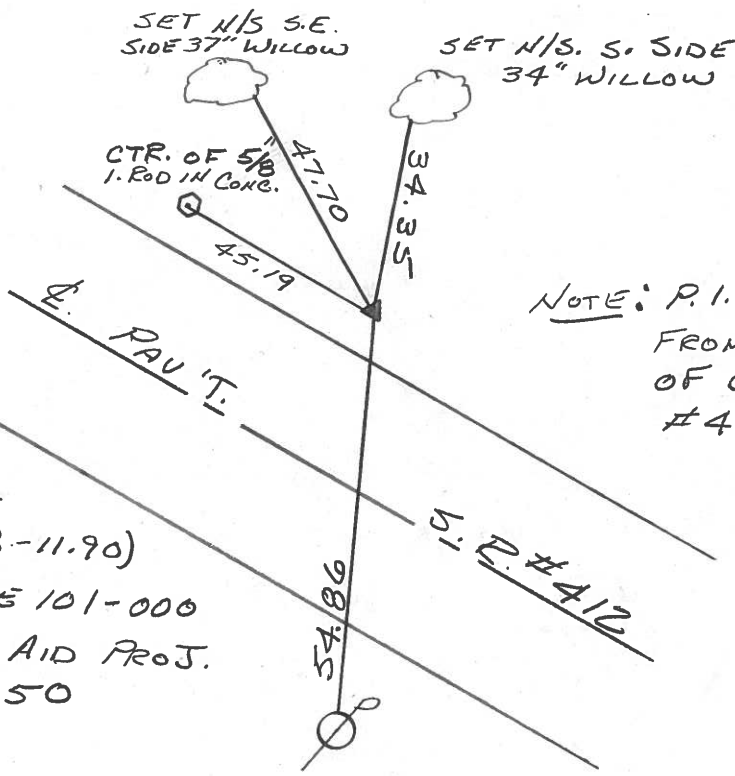
P.I. CONST. CURVE

$A = 21^{\circ}00'$  (PLAN)

FD. IRON ROD

2+44

7' LT. LT. E/P.



NOTE: P.I. IS 1.24' S.  
FROM & R/W.  
OF OLD S.R.  
#412.

\*

SEE S.R.#101 PLANS -  
POST WAR SEC. (3.88-11.90)  
SAN. 12-25.18 - ERIE 101-000  
& ERIE 12-000 FED. AID PROJ.  
S-447(1) 1949-1950

SET N/S.  
N. SIDE

PAINTED ARROW ON PAV'T.  
 7.22-1993  
 REC

County Sandusky S.R. # 412

Date 9/9/82 Drawn 10/06/82

Township Townsend

Weather sunny

Section 24

Temp. 68°

T4N, R12E

Personnel Cronin

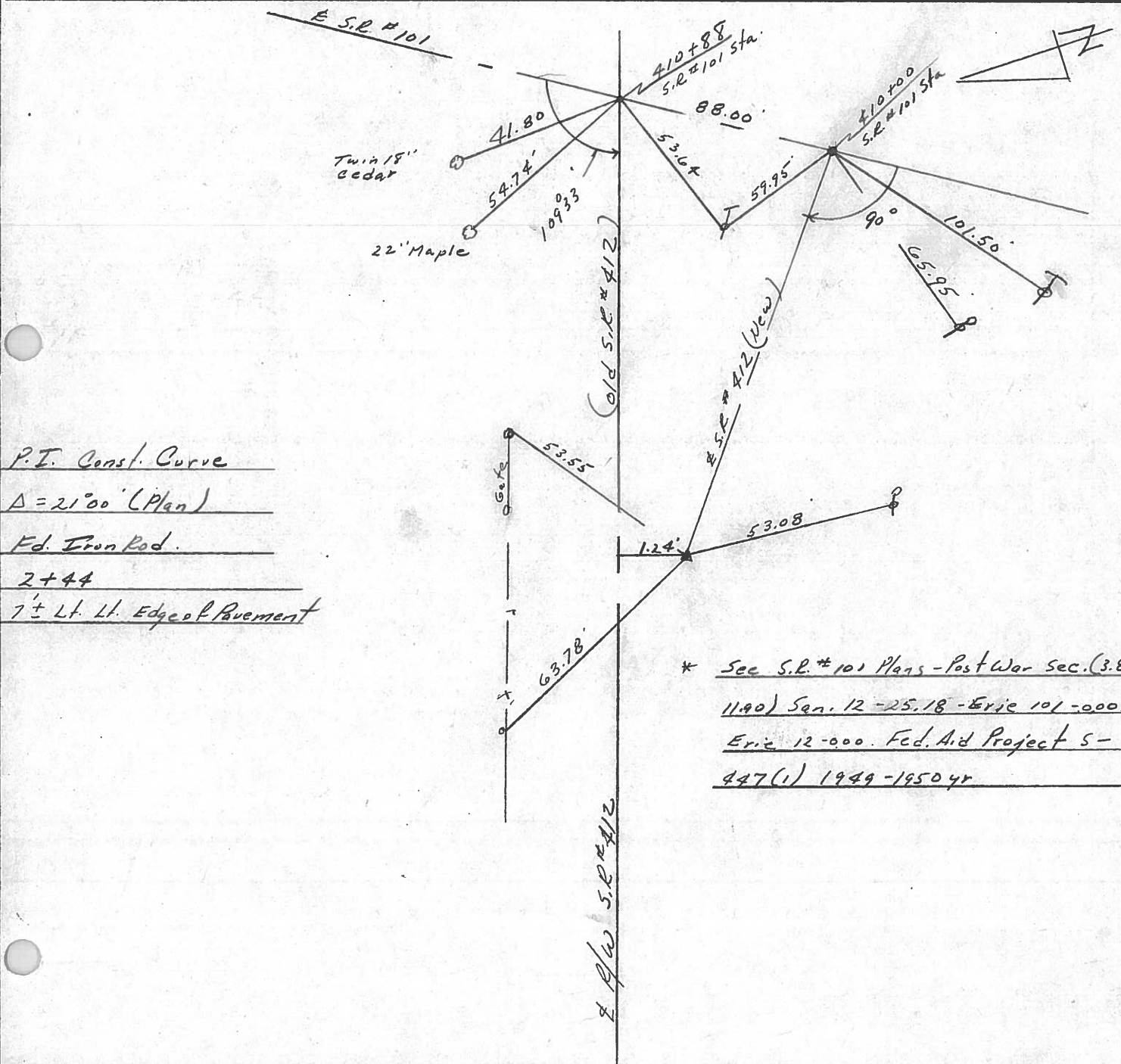
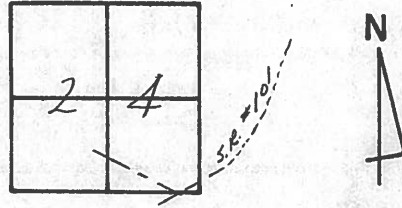
Ripple

Geyman

Mosser

Barbour

#30



P.I. Const. Curve

Δ = 21°00' (Plan)

Fd. Iron Rod.

2+44

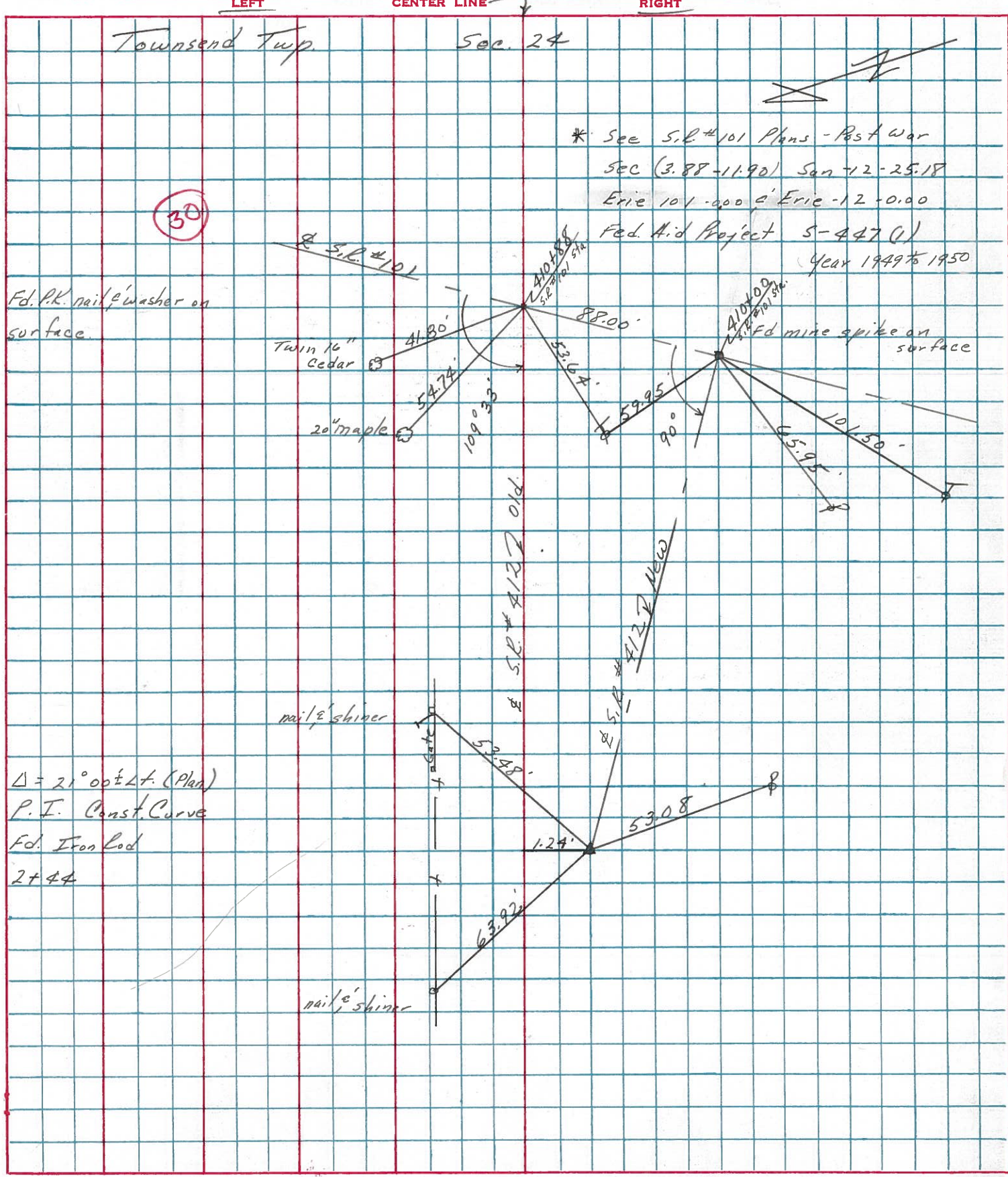
7 1/2 Lt. Lt. Edge of Pavement

\* See S.R. #101 Plans - Post War Sec. (3.88-11.90) Sep. 12-25.18 - Erie 101-000, Erie 12-000. Fed. Aid Project 5-447(1) 1949-1950 yr

S.R. #412

PERSONNEL	TITLE	PERSONNEL	TITLE	COUNTY	DATE
Cronin		Schneider		Sandusky	5/1/75
Ash		Mosser		S. R. #412	WEATHER sunny
Ripple		Barbour		SEC.	TEMP. 60°
Geyman					

DESCRIPTION Ties for Control Points JOB NO. \_\_\_\_\_



PERSONNEL TITLE PERSONNEL TITLE

Schneider  
Mosser  
Geyman

COUNTY Sandusky DATE 7-9-72

S. R. 412 WEATHER Hot

SEC. 24 TEMP. 88°

DESCRIPTION

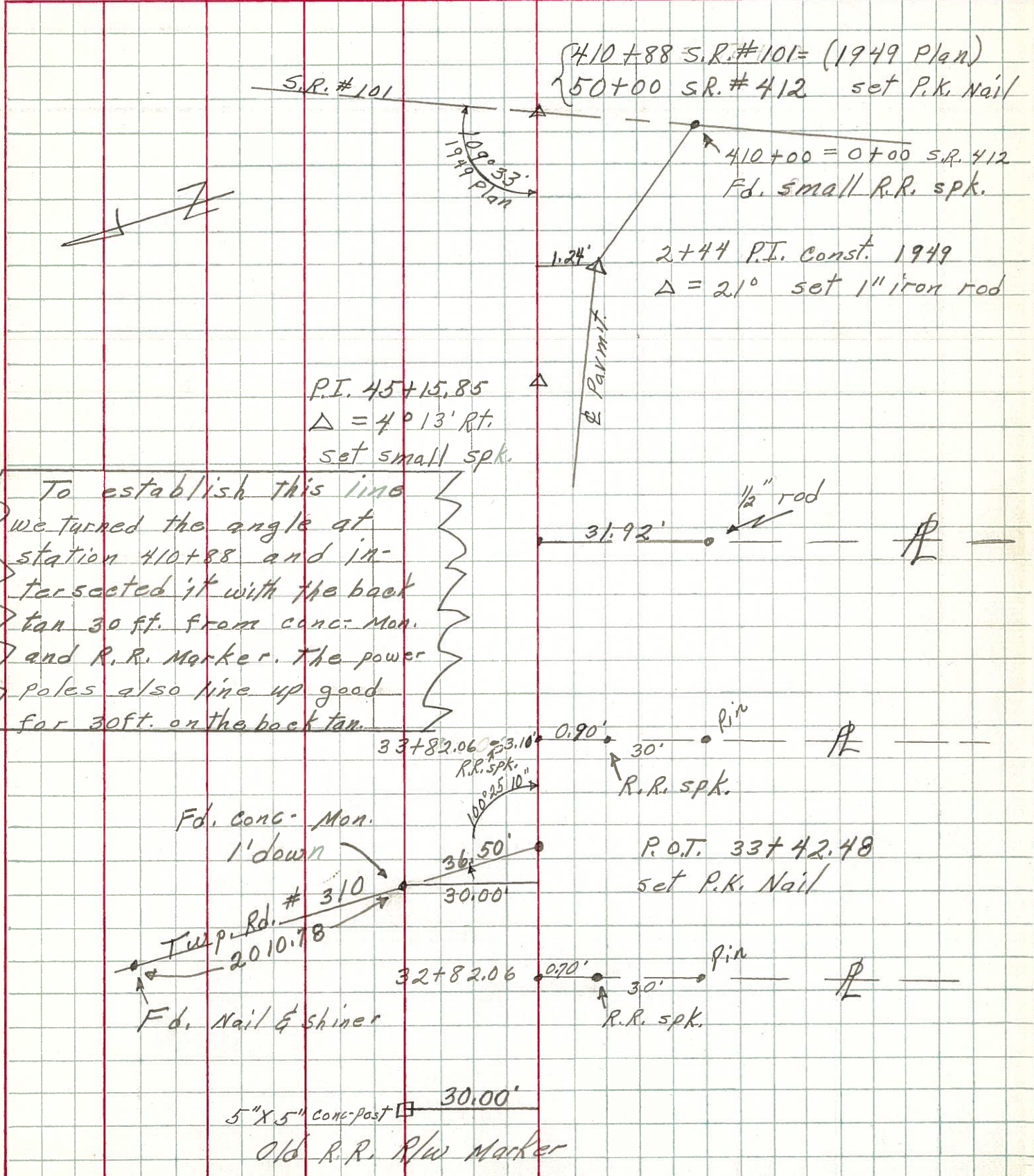
Townsend Twp.

JOB NO.

LEFT

CENTER LINE

RIGHT



PERSONNEL	TITLE	PERSONNEL	TITLE
<u>Schneider</u>			
<u>Barbour</u>			
<u>Geyman</u>			

COUNTY Sandusky DATE 7-17-72  
 S. R. 412 WEATHER Hot  
 SEC. 24 TEMP. 88°

DESCRIPTION Townsend Twp. JOB NO. \_\_\_\_\_

