

O.D.O.T. DISTRICT 2 SURVEY OFFICE (USE ONLY)

PERSONNEL _____

REFERENCE NO. 1

SHEET 1 OF 17

NOTES HOMAN

DATE 6/21/04

ROUTE SR 510

H.C. HOMAN

WEATHER SUNNY

COUNTY SANDUSKY

R.C. ADKINS

TEMP. 65°

TOWNSHIP GREEN CREEK

SECTION 14

DWG BY _____ PID _____

T 4 N R 16 E

TYPE MONUMENT IPIN

ON SURFACE - ~~BELOW~~ ON

OFFSET \varnothing PAVEMENT ON LT : RT

- TO - EDGE PAVEMENT

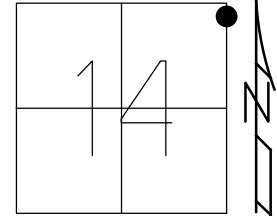
STATION: 26+73

HORZ. DATUM: _____

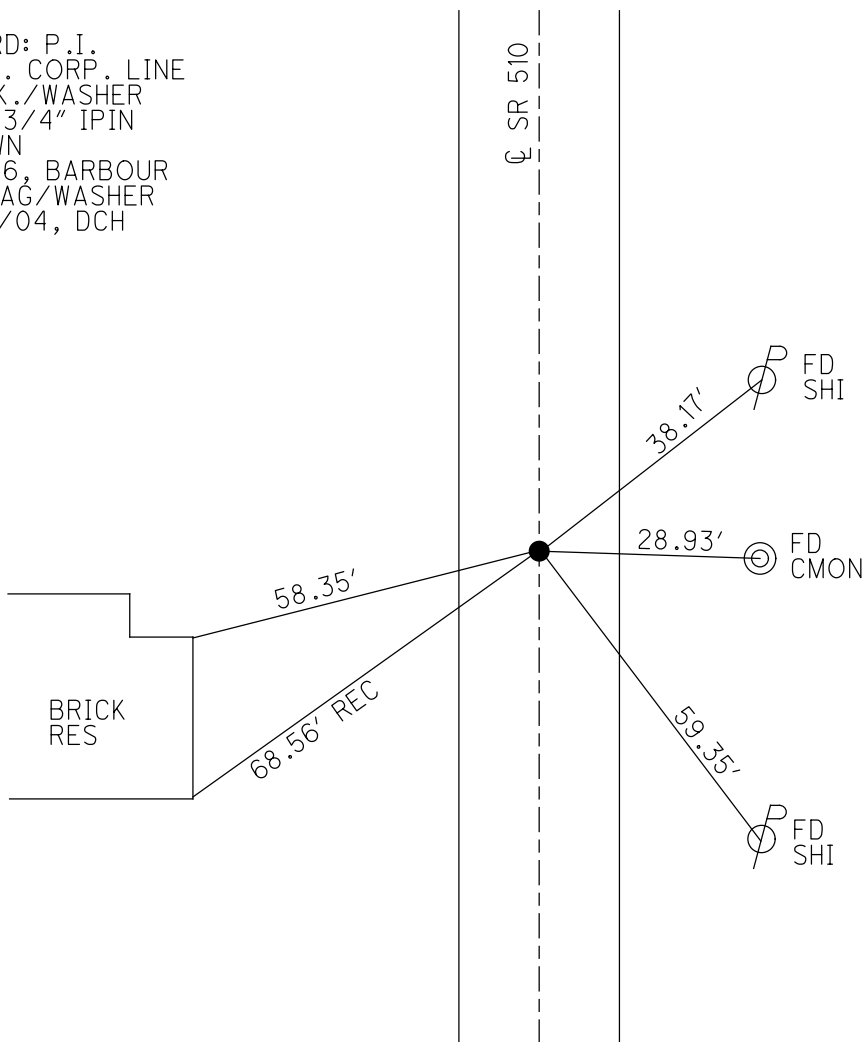
GEOID: _____

GRID: NORTHING: _____

EASTING: _____



RECORD: P.I.
 OLD N. CORP. LINE
 FD P.K./WASHER
 ATOP 3/4" IPIN
 1" DOWN
 6/4/86, BARBOUR
 SET MAG/WASHER
 10/08/04, DCH



O.D.O.T. DISTRICT 2 SURVEY OFFICE (USE ONLY)

PERSONNEL

REFERENCE NO. 2

SHEET 2 OF 18

NOTES RHOADES

DATE 5/25/21

ROUTE SR 510

H.C. NIESH

WEATHER CLOUDY

COUNTY SANDUSKY

R.C. RHOADES

TEMP. 86°

TOWNSHIP GREEN CREEK

DWG BY RHOADES PID PAVTRAIN

SECTION 11

T 4 N R 16 E

TYPE MONUMENT MAG/WASHER

ON SURFACE - ~~BELOW~~ ON

OFFSET \varnothing PAVEMENT 1' ~~LT~~ : RT

- TO - EDGE PAVEMENT

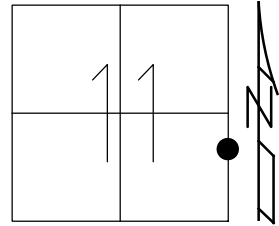
STATION: 40+35

HORIZ.DATUM: NAD83 2011

GEOID: NAVD88 2018

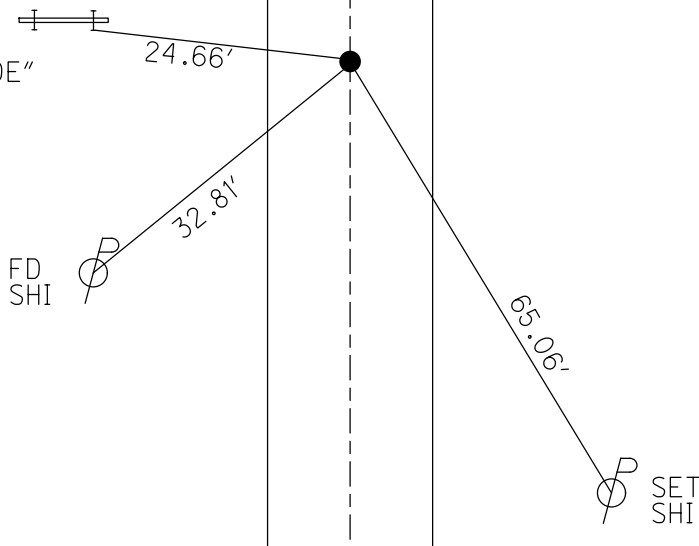
GRID: NORTHING: 601910.197

EASTING: 1838078.568



RECORD:
FD R.R.SPIKE
1971
SET MAG/WASHER
10/08/04, DCH
FD MAG/WASHER
REF2
5/25/21, TDN

FD NOTCH
STEEL BEAM
1.5' UP
"WELCOME TO CLYDE"



O.D.O.T. DISTRICT 2 SURVEY OFFICE (USE ONLY)

PERSONNEL _____ REFERENCE NO. 3 SHEET 3 OF 17

NOTES GARRETT DATE 7/23/20
 H.C. RHOADES WEATHER CLOUDY
 R.C. MAHLER TEMP. 77°

ROUTE SR 510
 COUNTY SANDUSKY
 TOWNSHIP GREEN CREEK
 SECTION 11
 T 4 N R 16 E

DWG BY RHOADES PID PAVE TRAIN

TYPE MONUMENT MAG NAIL

ON SURFACE - ~~BELOW~~ ON

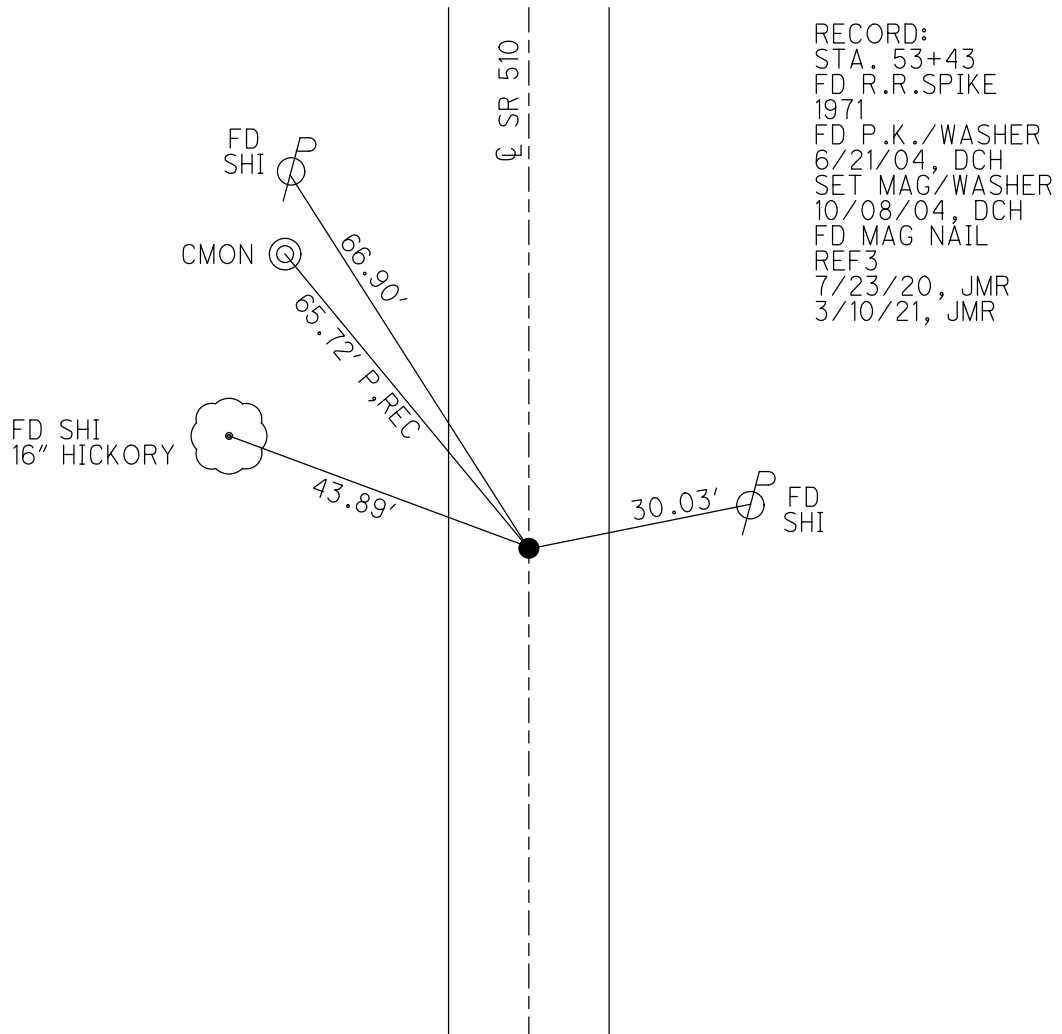
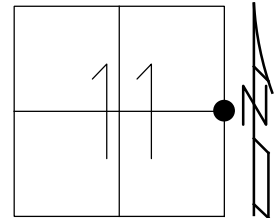
OFFSET CL PAVEMENT 4' ~~RT~~ : RT

5.6' TO RT EDGE PAVEMENT

STATION: 53+48

HORZ.DATUM: NAD83 2011 GEOID: NAVD88 2012A

GRID: NORTHING: 603241.766 EASTING: 1838088.871



RECORD:
 STA. 53+43
 FD R.R.SPIKE
 1971
 FD P.K./WASHER
 6/21/04, DCH
 SET MAG/WASHER
 10/08/04, DCH
 FD MAG NAIL
 REF3
 7/23/20, JMR
 3/10/21, JMR

O.D.O.T. DISTRICT 2 SURVEY OFFICE (USE ONLY)

PERSONNEL

REFERENCE NO. 4

SHEET 4 OF 17

NOTES GARRETT

DATE 7/23/20

ROUTE SR 510

H.C. RHOADES

WEATHER CLOUDY

COUNTY SANDUSKY

R.C. MAHLER

TEMP. 77°

TOWNSHIP GREEN CREEK

SECTION 11

DWG BY RHOADES PID PAVE TRAIN

T 4 N R 16 E

TYPE MONUMENT MAG NAIL

ON SURFACE - ~~BELOW~~ ON

OFFSET \varnothing PAVEMENT 1' LT : ~~RT~~

- TO - EDGE PAVEMENT

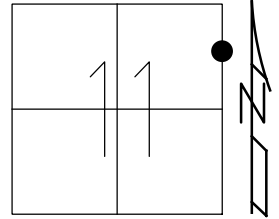
STATION: 71+77

HORZ.DATUM: NAD83 2011

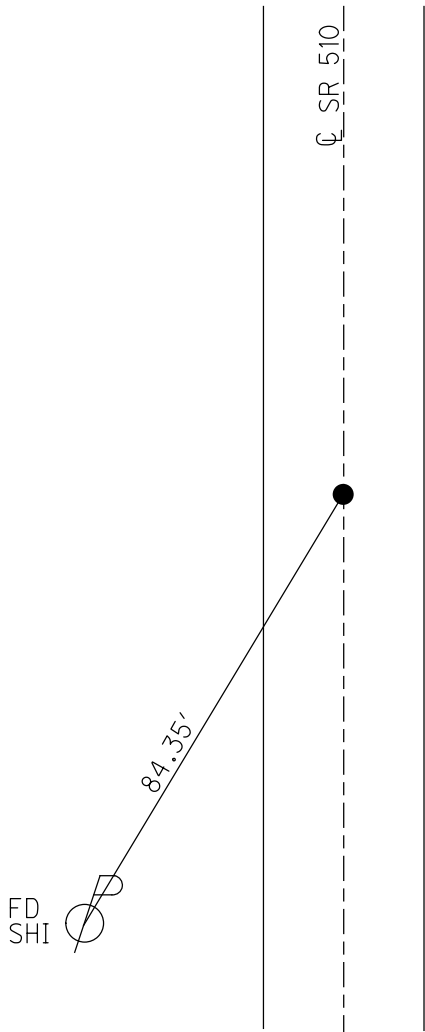
GEOID: NAVD88 2012A

GRID: NORTHING: 605045.955

EASTING: 1838094.646



RECORD:
 STA. 71+42.57
 FD R.R. SPIKE
 2" DOWN
 1971
 FD P.K./WASHER
 6/21/04, DCH
 SET MAG/WASHER
 10/08/04, DCH
 FD MAG NAIL
 REF4
 7/23/20, JMR
 3/10/21, JMR



O.D.O.T. DISTRICT 2 SURVEY OFFICE (USE ONLY)

PERSONNEL

REFERENCE NO. 5

SHEET 5 OF 17

NOTES GARRETT

DATE 7/23/20

ROUTE SR 510

H.C. RHOADES

WEATHER CLOUDY

COUNTY SANDUSKY

R.C. MAHLER

TEMP. 77°

TOWNSHIP GREEN CREEK

SECTION 2

DWG BY RHOADES

PID PAVE TRAIN

T 4 N R 16 E

TYPE MONUMENT MAG NAIL

ON SURFACE - ~~BELOW~~ ON

OFFSET \varnothing PAVEMENT 2.5' ~~LT~~ : RT

- TO - EDGE PAVEMENT

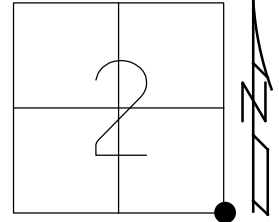
STATION: 80+24

HORIZ.DATUM: NAD83 2011

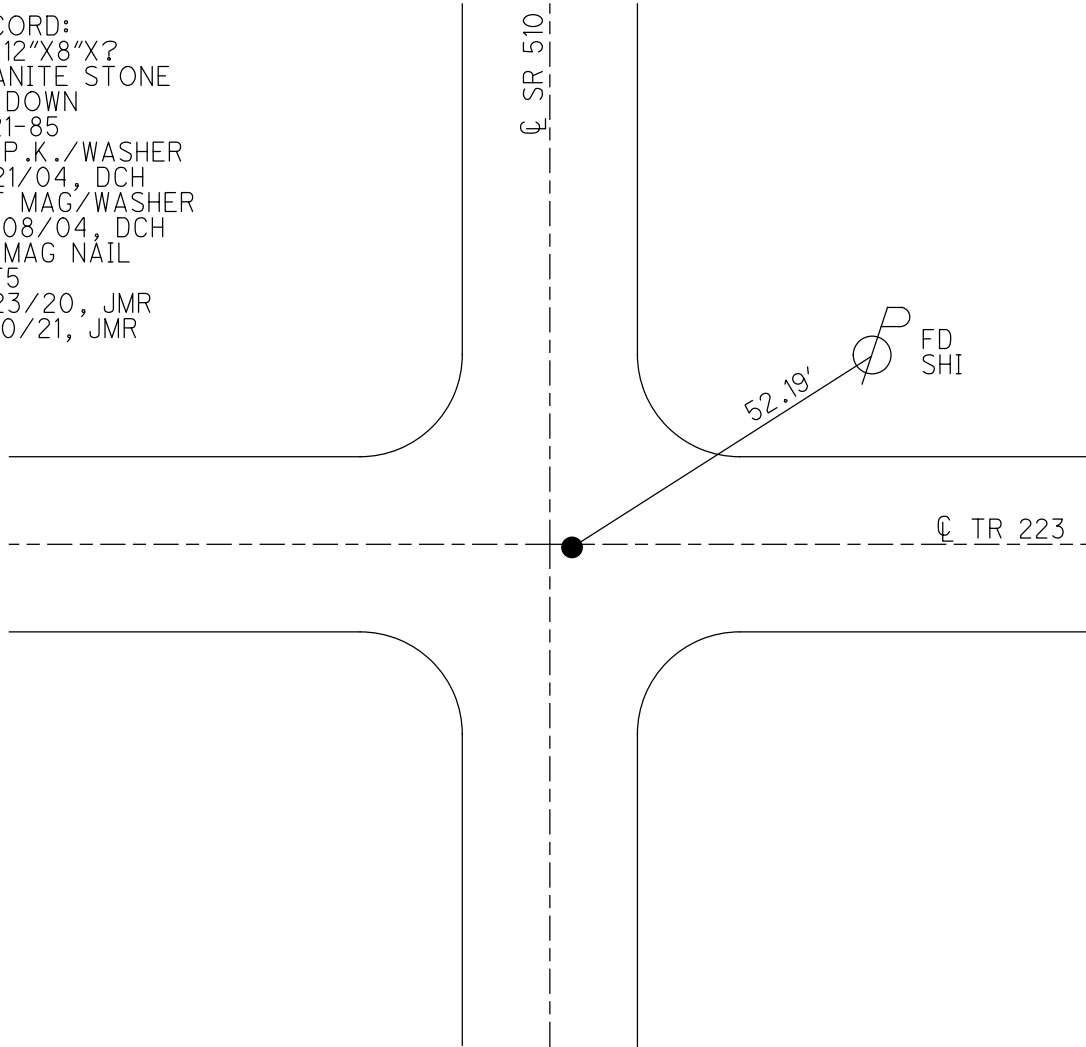
GEOID: NAVD88 2012A

GRID: NORTHING: 605889.595

EASTING: 1838109.472



RECORD:
FD 12"X8"X?
GRANITE STONE
21" DOWN
5-21-85
FD P.K./WASHER
6/21/04, DCH
SET MAG/WASHER
10/08/04, DCH
FD MAG NAIL
REF5
7/23/20, JMR
3/10/21, JMR



O.D.O.T. DISTRICT 2 SURVEY OFFICE (USE ONLY)

PERSONNEL

REFERENCE NO. 6

SHEET 6 OF 17

NOTES GARRETT

DATE 7/23/20

ROUTE SR 510

H.C. RHOADES

WEATHER CLOUDY

COUNTY SANDUSKY

R.C. MAHLER

TEMP. 77°

TOWNSHIP GREEN CREEK

SECTION 2

DWG BY RHOADES

PID PAVE TRAIN

T 4 N R 16 E

TYPE MONUMENT MAG SHANK

ON SURFACE - ~~BELOW~~ ON

OFFSET Q PAVEMENT ON LT : RT

- TO - EDGE PAVEMENT

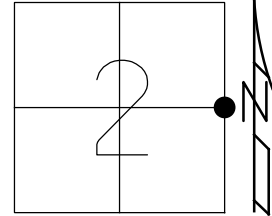
STATION: 106+69

HORIZ.DATUM: NAD83 2011

GEOID: NAVD88 2012A

GRID: NORTHING: 608531.215

EASTING: 1838136.256



RECORD:

STA. 106+34

FD P.K./WASHER

ATOP BOLT SPIKE

ATOP STONE

1971

FD P.K./WASHER

6/21/04, DCH

SET MAG/WASHER

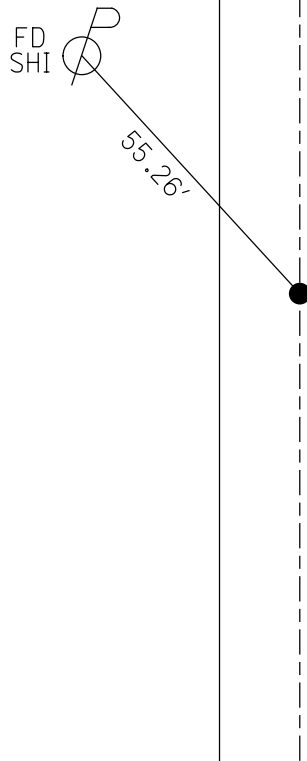
9/03/04, DCH

FD MAG SHANK

REF6

7/23/20, JMR

3/10/21, JMR



O.D.O.T. DISTRICT 2 SURVEY OFFICE (USE ONLY)

PERSONNEL

REFERENCE NO. 7

SHEET 7 OF 17

NOTES GARRETT

DATE 7/23/20

ROUTE SR 510

H.C. RHOADES

WEATHER CLOUDY

COUNTY SANDUSKY

R.C. MAHLER

TEMP. 77°

TOWNSHIP GREEN CREEK

SECTION 2

DWG BY RHOADES

PID PAVE TRAIN

T 4 N R 16 E

TYPE MONUMENT MONBOX

ON SURFACE - ~~BELOW~~ ON

OFFSET CL PAVEMENT 35' LT : ~~RT~~

- TO - EDGE PAVEMENT

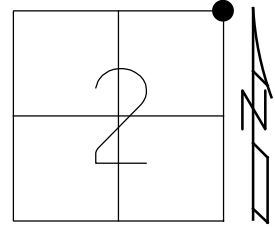
STATION: 132+52

HORZ.DATUM: NAD83 2011

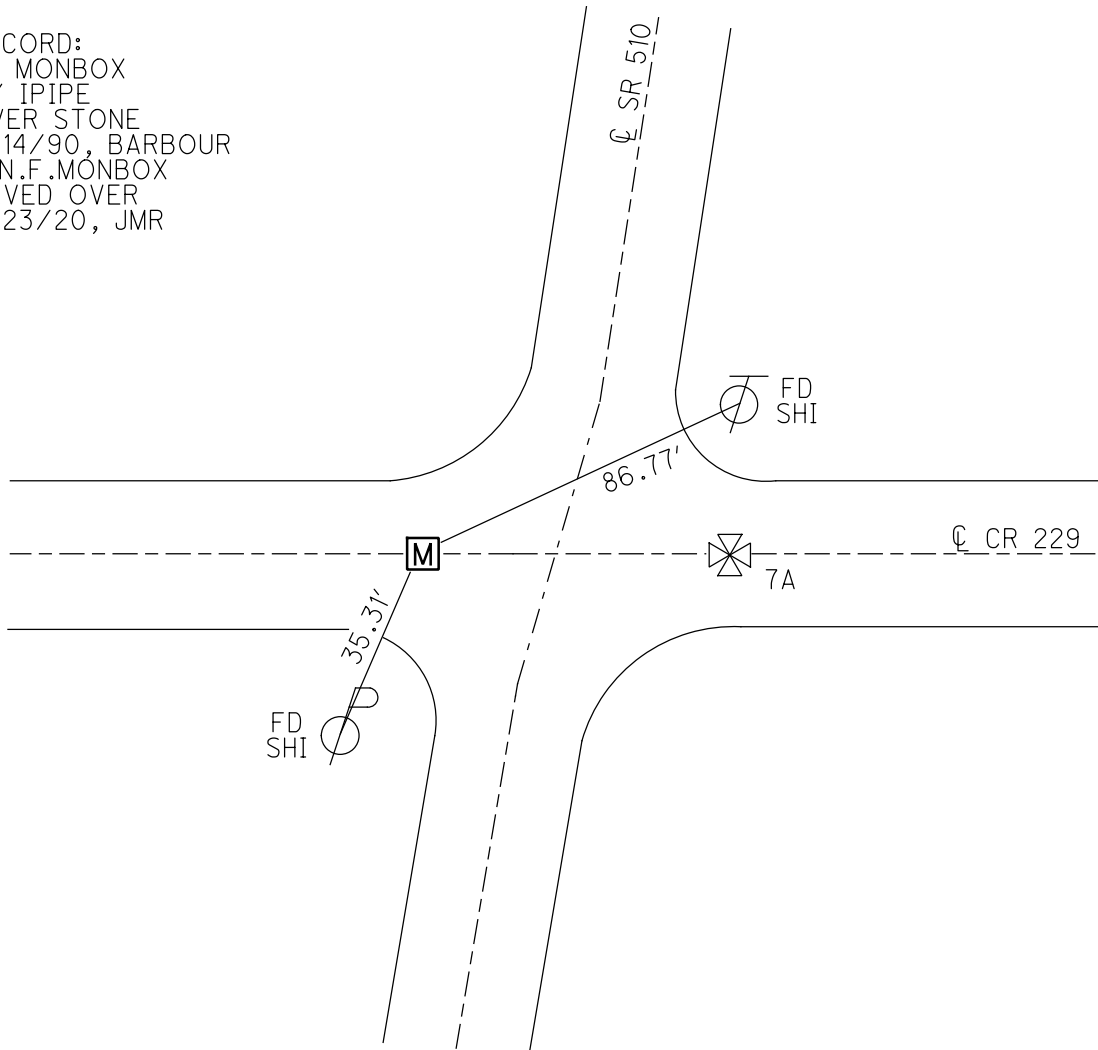
GEOID: NAVD88 2012A

GRID: NORTHING: _____

EASTING: _____



RECORD:
FD MONBOX
W/ IPIPE
OVER STONE
8/14/90, BARBOUR
D.N.F. MONBOX
PAVED OVER
7/23/20, JMR



O.D.O.T. DISTRICT 2 SURVEY OFFICE (USE ONLY)

PERSONNEL

REFERENCE NO. 7 A

SHEET 8 OF 17

NOTES GARRETT

DATE 7/23/20

ROUTE SR 510

H.C. RHOADES

WEATHER CLOUDY

COUNTY SANDUSKY

R.C. MAHLER

TEMP. 77°

TOWNSHIP RILEY

SECTION 35

DWG BY RHOADES

PID PAVE TRAIN

T 5 N R 16 E

TYPE MONUMENT 3/4" IPIN OVER STONE

ON SURFACE - ~~BELOW~~ ON

OFFSET C PAVEMENT 50' ~~ET~~ : RT

- TO - EDGE PAVEMENT

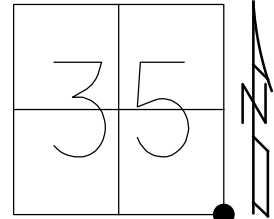
STATION: 132+52

HORZ.DATUM: NAD83 2011

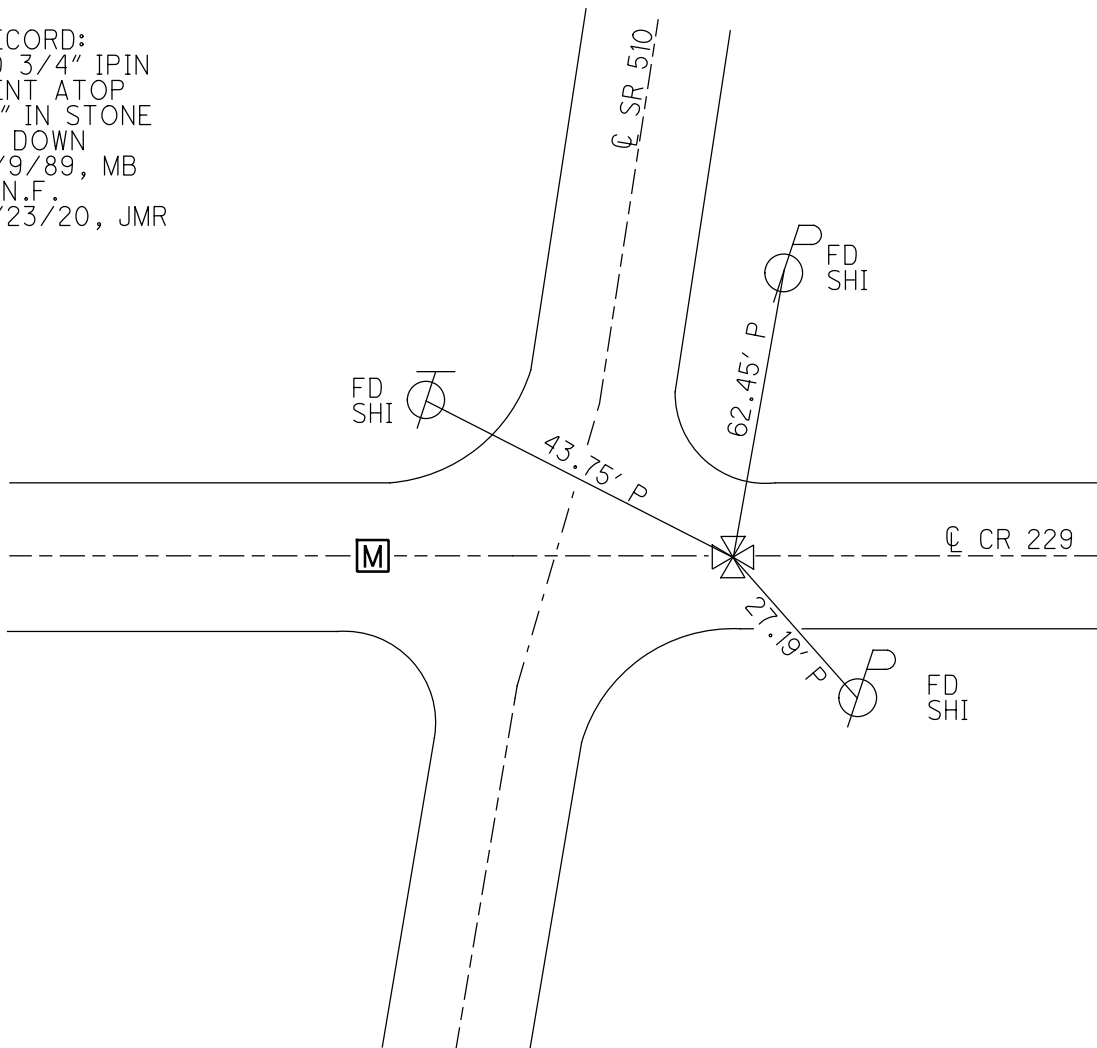
GEOID: NAVD88 2012A

GRID: NORTHING: _____

EASTING: _____



RECORD:
 FD 3/4" IPIN
 BENT ATOP
 "X" IN STONE
 9" DOWN
 11/9/89, MB
 D.N.F.
 7/23/20, JMR



O.D.O.T. DISTRICT 2 SURVEY OFFICE (USE ONLY)

PERSONNEL

REFERENCE NO. 8

SHEET 9 OF 17

NOTES GARRETT

DATE 7/23/20

ROUTE SR 510

H.C. RHOADES

WEATHER CLOUDY

COUNTY SANDUSKY

R.C. MAHLER

TEMP. 77°

TOWNSHIP RILEY

SECTION 35

DWG BY RHOADES

PID PAVE TRAIN

T 5 N R 16 E

TYPE MONUMENT MAG/WASHER

ON SURFACE - ~~BELOW~~ ON

OFFSET \varnothing PAVEMENT 4.3' ~~LT~~ : RT

- TO - EDGE PAVEMENT

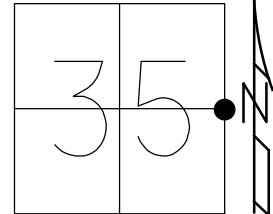
STATION: 159+50

HORIZ.DATUM: NAD83 2011

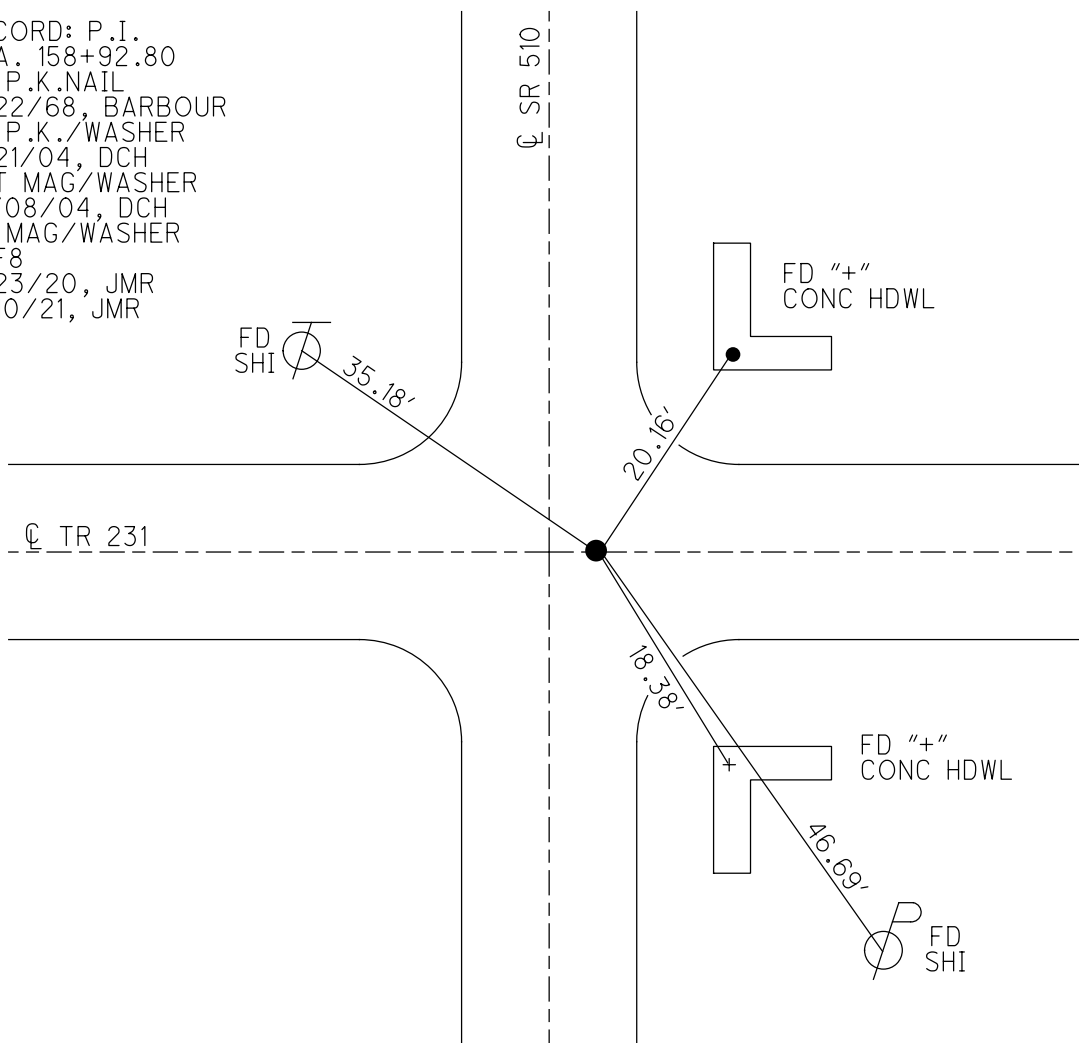
GEOID: NAVD88 2012A

GRID: NORTHING: 613783.993

EASTING: 1838329.599



RECORD: P.I.
 STA. 158+92.80
 FD P.K.NAIL
 4/22/68, BARBOUR
 FD P.K./WASHER
 6/21/04, DCH
 SET MAG/WASHER
 10/08/04, DCH
 FD MAG/WASHER
 REF8
 7/23/20, JMR
 3/10/21, JMR



O.D.O.T. DISTRICT 2 SURVEY OFFICE (USE ONLY)

PERSONNEL

REFERENCE NO. 9

SHEET 10 OF 17

NOTES GARRETT

DATE 7/23/20

ROUTE SR 510

H.C. RHOADES

WEATHER CLOUDY

COUNTY SANDUSKY

R.C. ADKINS

TEMP. 77°

TOWNSHIP RILEY

SECTION 35

DWG BY RHOADES

PID PAVE TRAIN

T 5 N R 16 E

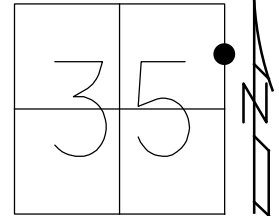
TYPE MONUMENT MAG SHANK

ON SURFACE - ~~BELOW~~ ON

OFFSET \varnothing PAVEMENT ON LT : RT

- TO - EDGE PAVEMENT

STATION: 172+74



HORZ.DATUM: NAD83 2011

GEOID: NAVD88 2012A

GRID: NORTHING: 615102.861

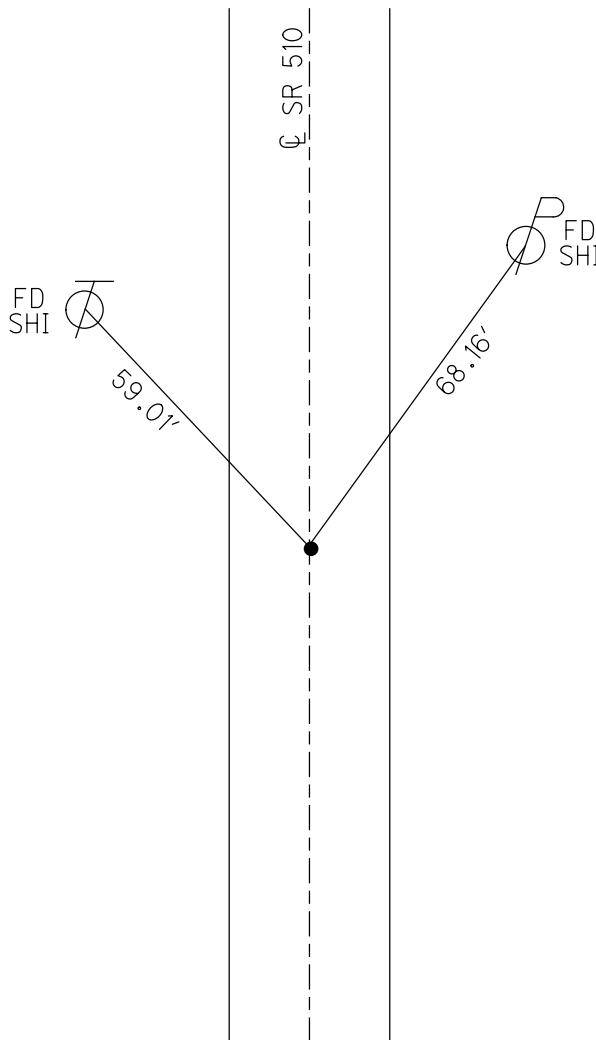
EASTING: 1838359.903

RECORD:

STA 172+12.50
FD P.K./WASHER
1 1/2" DOWN
SET SM.SPIKE
1971

FD P.K./WASHER
6/21/04, DCH
SET MAG/WASHER
10/08/04, DCH
FD MAG SHANK

REF9
7/23/20, JMR
3/10/21, JMR



O.D.O.T. DISTRICT 2 SURVEY OFFICE (USE ONLY)

PERSONNEL _____ REFERENCE NO. 10 SHEET 11 OF 18

NOTES RHOADES DATE 7/20/22 ROUTE SR 510
 H.C. RHOADES WEATHER HUMID COUNTY SANDUSKY
 R.C. WHITAKER TEMP. 84° TOWNSHIP RILEY
 SECTION 26

DWG BY WHITAKER PID PVTRN T 5 N R 16 E

TYPE MONUMENT MAG/WASHER

ON SURFACE - ~~BELOW~~ ON

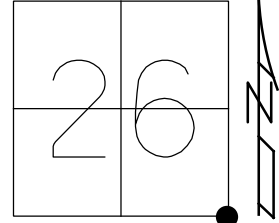
OFFSET C PAVEMENT 0.8' LT : ~~RT~~

- TO - EDGE PAVEMENT

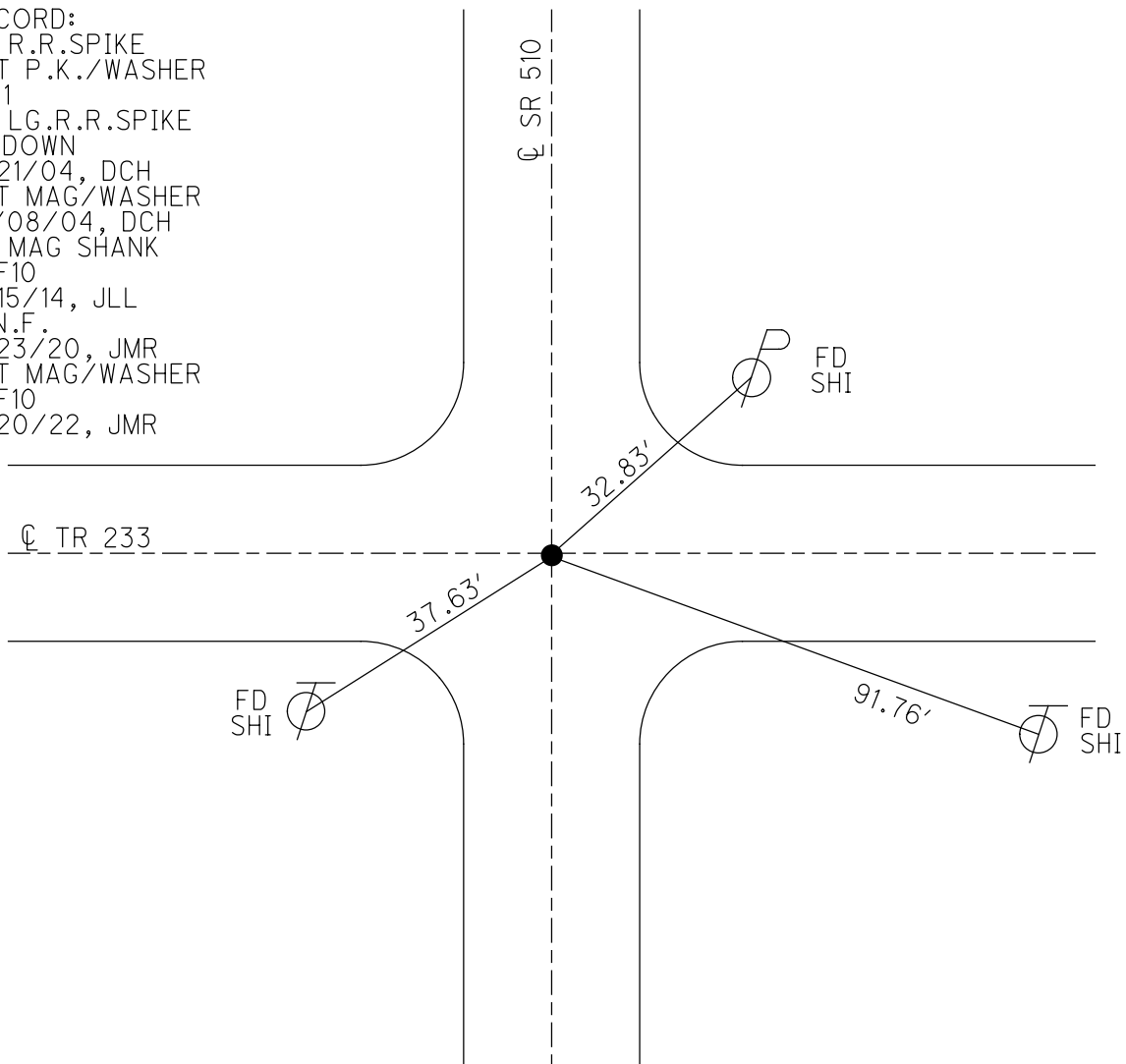
STATION: 185+95

HORZ. DATUM: NAD83 2011 GEOID: NAVD88 2012A

GRID: NORTHING: 616423.172 EASTING: 1838390.514



RECORD:
 FD R.R.SPIKE
 SET P.K./WASHER
 1971
 FD LG.R.R.SPIKE
 3" DOWN
 6/21/04, DCH
 SET MAG/WASHER
 10/08/04, DCH
 FD MAG SHANK
 REF10
 9/15/14, JLL
 D.N.F.
 7/23/20, JMR
 SET MAG/WASHER
 REF10
 7/20/22, JMR



O.D.O.T. DISTRICT 2 SURVEY OFFICE (USE ONLY)

PERSONNEL

REFERENCE NO. 11

SHEET 12 OF 17

NOTES GARRETT

DATE 7/23/20

ROUTE SR 510

H.C. RHOADES

WEATHER CLOUDY

COUNTY SANDUSKY

R.C. MAHLER

TEMP. 77°

TOWNSHIP RILEY

SECTION 26

DWG BY RHOADES PID PAVE TRAIN

T 5 N R 16 E

TYPE MONUMENT MAG SHANK

ON SURFACE - ~~BELOW~~ ON

OFFSET Q PAVEMENT 1.5' ~~±~~ : RT

7.8' TO RT EDGE PAVEMENT

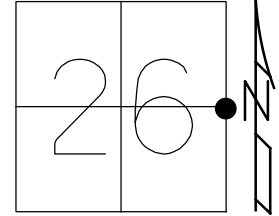
STATION: 212+53

HORZ.DATUM: NAD83 2011

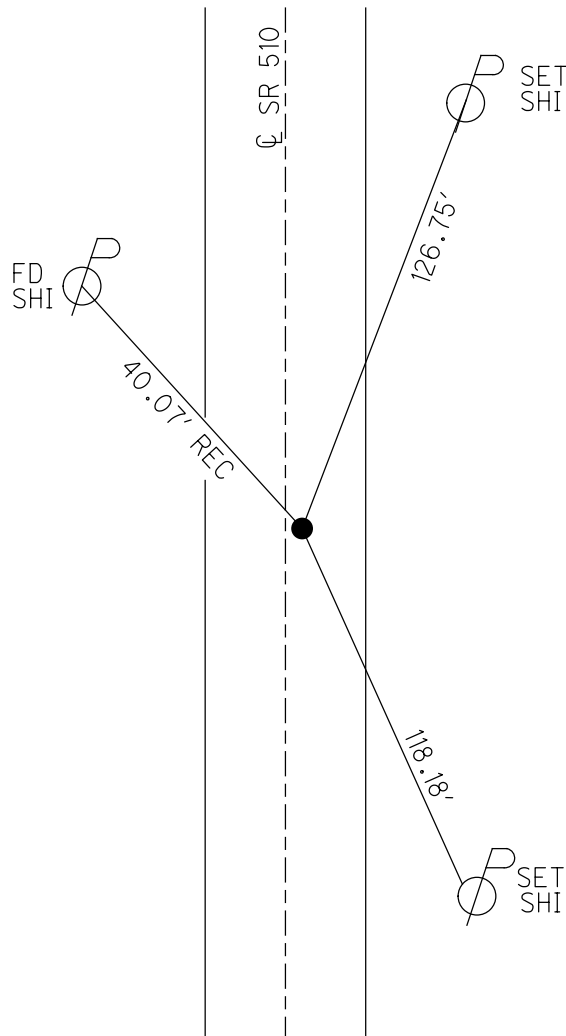
GEOID: NAVD88 2012A

GRID: NORTHING: 619074.015

EASTING: 1838443.626



RECORD:
 STA. 211+98
 FD R.R.SPIKE
 1 1/2" DOWN
 SET SM.SPIKE
 1971
 FD P.K./WASHER
 6/30/04, DCH
 SET MAG/WASHER
 9/03/04, DCH
 FD MAG SHANK
 REF11
 9/15/14, JLL
 D.N.F.
 7/23/20, JMR



O.D.O.T. DISTRICT 2 SURVEY OFFICE (USE ONLY)

PERSONNEL

REFERENCE NO. 12

SHEET 13 OF 17

NOTES GARRETT

DATE 7/23/20

ROUTE SR 510

H.C. RHOADES

WEATHER CLOUDY

COUNTY SANDUSKY

R.C. MAHLER

TEMP. 77°

TOWNSHIP RILEY

SECTION 26

DWG BY RHOADES

PID PAVE TRAIN

T 5 N R 16 E

TYPE MONUMENT MAG/WASHER

ON SURFACE - ~~BELOW~~ ON

OFFSET CL PAVEMENT 2.5' LT : RT

10.0' TO LT EDGE PAVEMENT

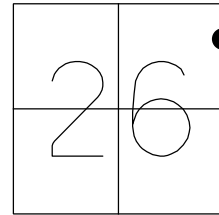
STATION: 227+81

HORZ.DATUM: NAD83 2011

GEOID: NAVD88 2012A

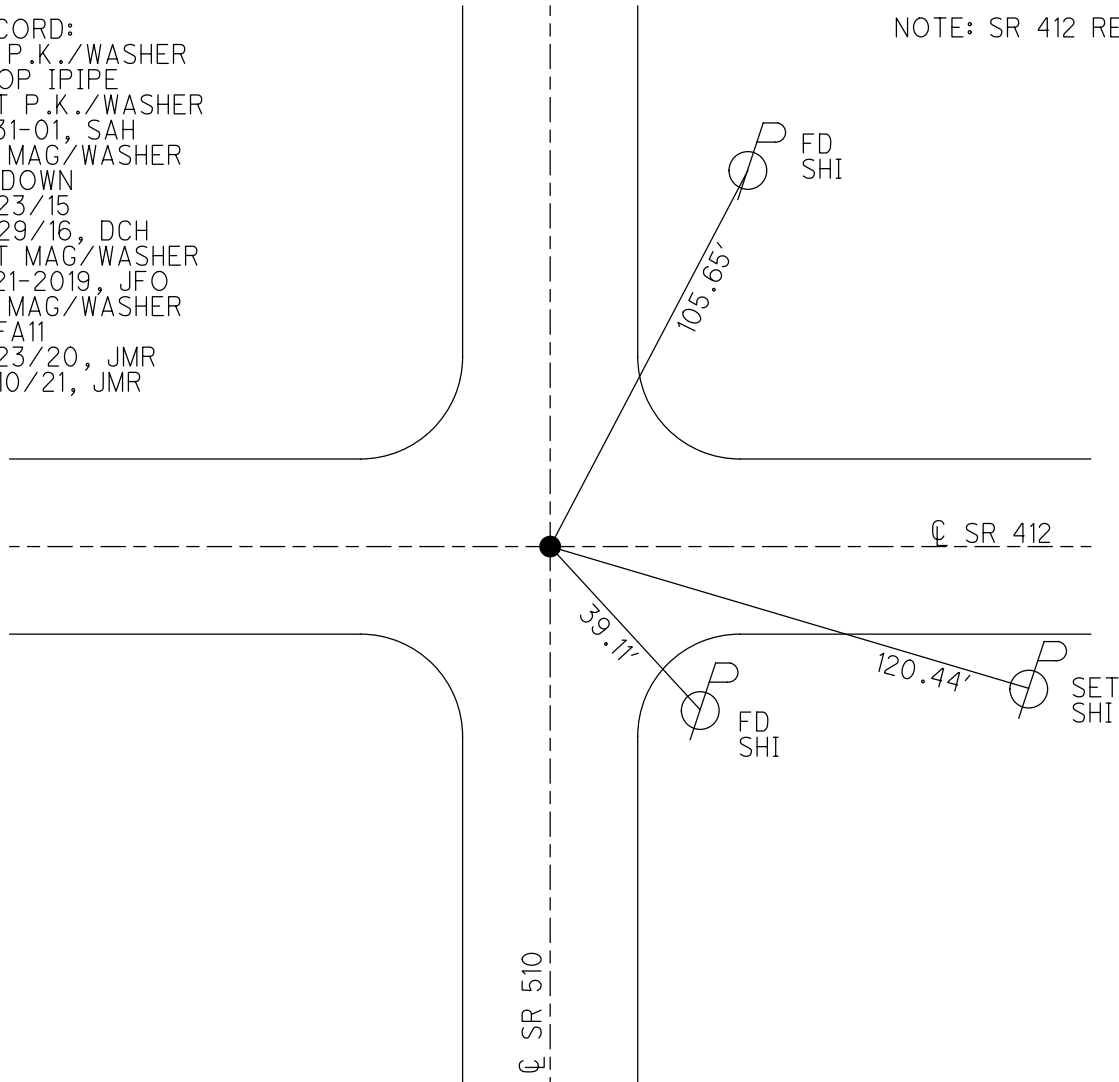
GRID: NORTHING: 620593.287

EASTING: 1838476.137



RECORD:
 FD P.K./WASHER
 ATOP IPIPE
 SET P.K./WASHER
 8-31-01, SAH
 FD MAG/WASHER
 2" DOWN
 6/23/15
 11/29/16, DCH
 SET MAG/WASHER
 8-21-2019, JFO
 FD MAG/WASHER
 REFA11
 7/23/20, JMR
 3/10/21, JMR

NOTE: SR 412 REF 11



O.D.O.T. DISTRICT 2 SURVEY OFFICE (USE ONLY)

PERSONNEL

REFERENCE NO. 13

SHEET 14 OF 18

NOTES RHOADES DATE 7/20/22

ROUTE SR 510

H.C. RHOADES WEATHER HUMID

COUNTY SANDUSKY

R.C. WHITAKER TEMP. 84°

TOWNSHIP RILEY

SECTION 23

DWG BY WHITAKER PID PVTRN

T 5 N R 16 E

TYPE MONUMENT MAG/WASHER

ON SURFACE - ~~BELOW~~ ON

OFFSET Q PAVEMENT 1' ~~±~~ : RT

8.5' TO RT EDGE PAVEMENT

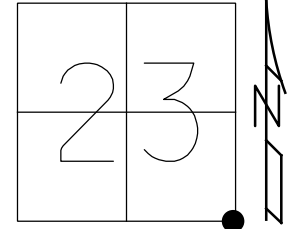
STATION: 240+13

HORZ. DATUM: _____

GEOID: _____

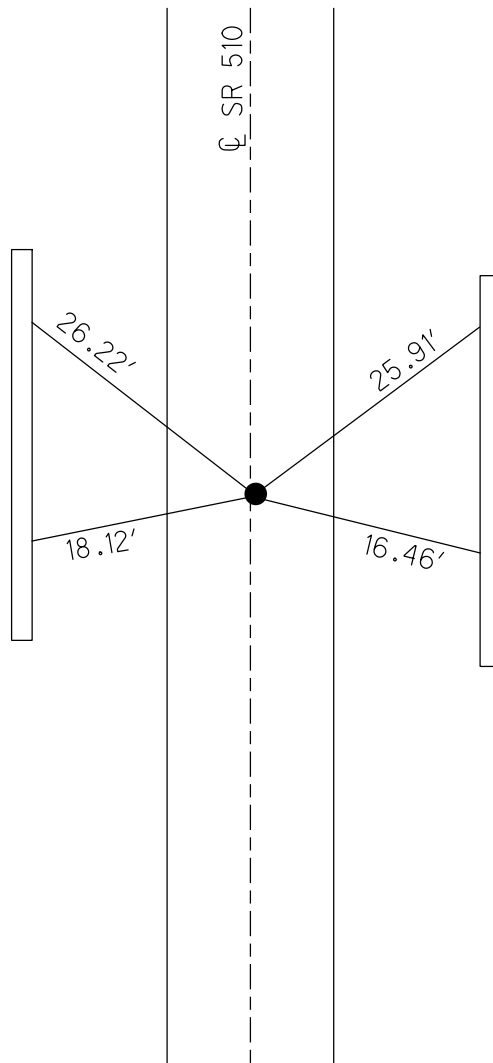
GRID: NORTHING: _____

EASTING: _____



RECORD:
 FD BOLT
 1" DOWN
 SET SM.R.R.SPIKE
 1971
 FD P.K./WASHER
 6/30/04, DCH
 SET MAG NAIL
 10/08/04, DCH
 D.N.F.
 7/23/20
 3/10/21, JMR
 SET MAG/WASHER
 7/20/22, JMR

POINT UNDER BRIDGE
 NO GPS



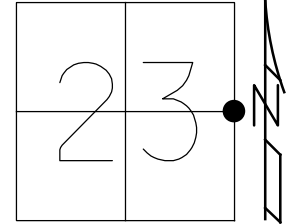
CUT "X"s ON
 BARRIER WALL
 UNDER TURNPIKE
 OPPOSITE PIERS

O.D.O.T. DISTRICT 2 SURVEY OFFICE (USE ONLY)

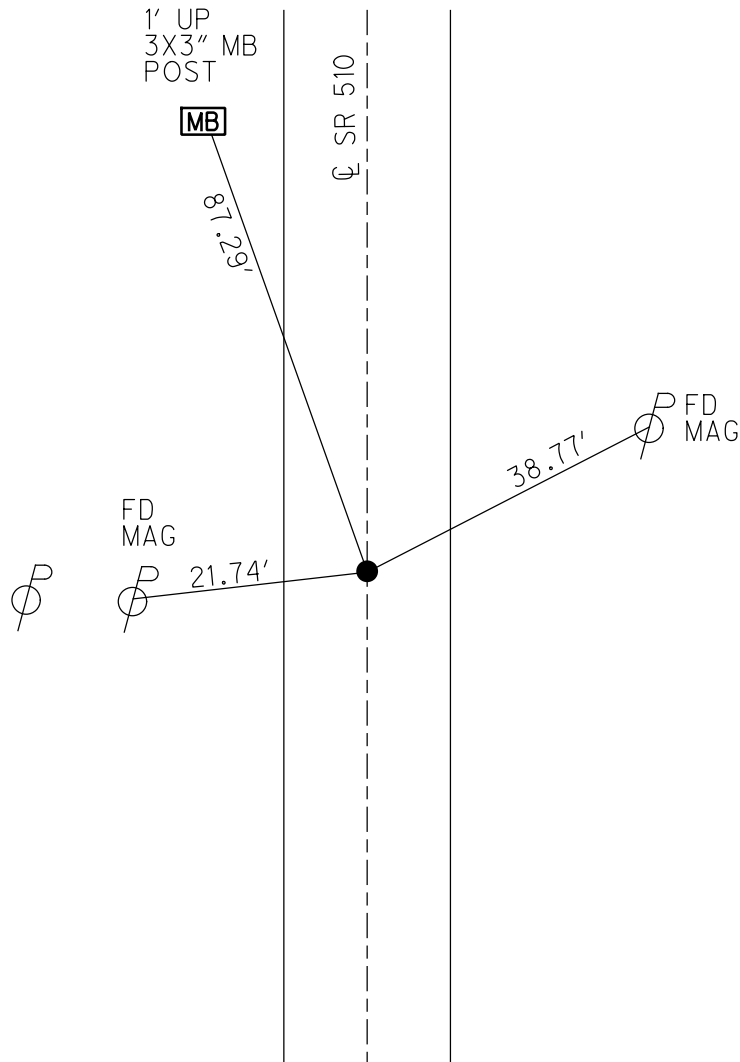
PERSONNEL _____ REFERENCE NO. 14 SHEET 15 OF 18
 NOTES RHOADES DATE 5/25/21 ROUTE SR 510
 H.C. NIESH WEATHER CLOUDY COUNTY SANDUSKY
 R.C. RHOADES TEMP. 86° TOWNSHIP RILEY
 DWG BY RHOADES PID PAVTRAIN SECTION 23
 T 5 N R 16 E

TYPE MONUMENT 1/2" IPIN
~~ON SURFACE~~ - BELOW 3"
 OFFSET ϕ PAVEMENT ON _____ LT : RT
 _____ TO _____ EDGE PAVEMENT
 STATION: 265+10

HORIZ.DATUM: NAD83 2011 GEOID: NAVD88 2018
 GRID: NORTHING: 624367.526 EASTING: 1838551.137



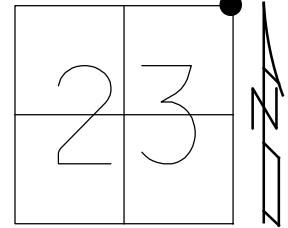
RECORD:
 FD R.R.SPIKE
 1971
 SET MAG/WASHER
 10/08/04, DCH
 FD 1/2" IPIN
 3" DOWN
 REF14
 5/25/21, TDN
 1/20/23, JMR



O.D.O.T. DISTRICT 2 SURVEY OFFICE (USE ONLY)

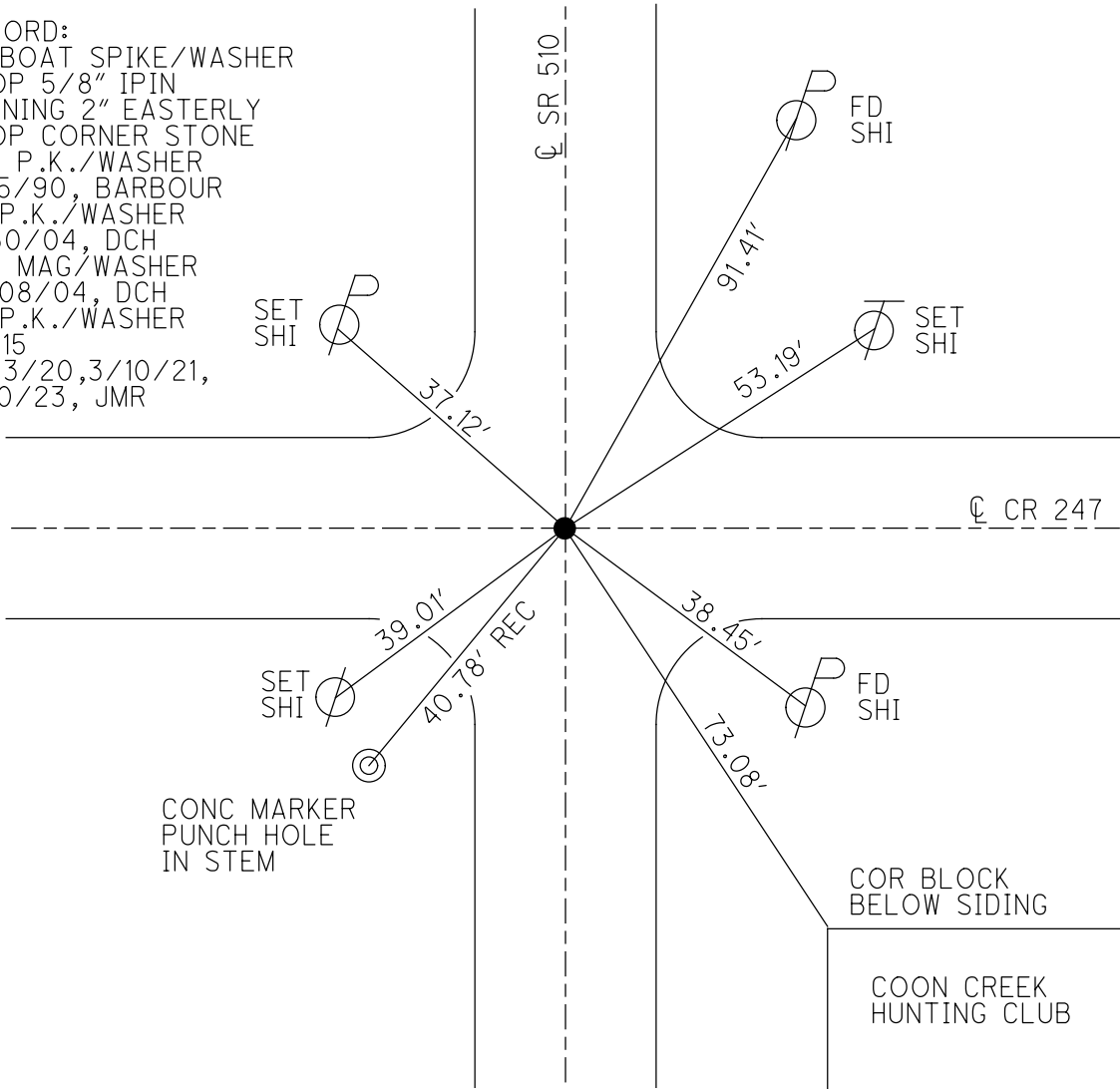
PERSONNEL _____ REFERENCE NO. 15 SHEET 16 OF 18
 NOTES GARRETT DATE 7/23/20 ROUTE SR 510
 H.C. RHOADES WEATHER CLOUDY COUNTY SANDUSKY
 R.C. MAHLER TEMP. 77° TOWNSHIP RILEY
 SECTION 23
 DWG BY RHOADES PID PAVE TRAIN T 5 N R 16 E

TYPE MONUMENT P.K./WASHER
 ON SURFACE - ~~BELOW~~ ON
 OFFSET \bar{C} PAVEMENT 3' LT : ~~RT~~
- TO - EDGE PAVEMENT
 STATION: 292+10



HORZ.DATUM: NAD83 2011 GEOID: NAVD88 2012A
 GRID: NORTHING: 627012.138 EASTING: 1838592.850

RECORD:
 FD BOAT SPIKE/WASHER
 ATOP 5/8" IPIN
 LEANING 2" EASTERLY
 ATOP CORNER STONE
 SET P.K./WASHER
 8/15/90, BARBOUR
 FD P.K./WASHER
 6/30/04, DCH
 SET MAG/WASHER
 10/08/04, DCH
 FD P.K./WASHER
 REF15
 7/23/20, 3/10/21,
 1/20/23, JMR



O.D.O.T. DISTRICT 2 SURVEY OFFICE (USE ONLY)

PERSONNEL

REFERENCE NO. 15 A

SHEET 17 OF 18

NOTES GARRETT

DATE 7/23/20

ROUTE SR 510

H.C. RHOADES

WEATHER CLOUDY

COUNTY SANDUSKY

R.C. MAHLER

TEMP. 77°

TOWNSHIP RILEY

SECTION 14

DWG BY RHOADES

PID PAVE TRAIN

T 5 N R 16 E

TYPE MONUMENT P.K./WASHER

ON SURFACE - ~~BELOW~~ ON

OFFSET Q PAVEMENT 1.7' ~~LT~~ : RT

7' TO RT EDGE PAVEMENT

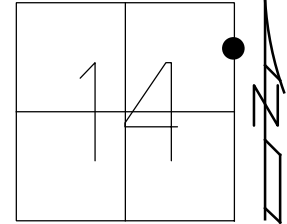
STATION: 331+82

HORIZ.DATUM: _____

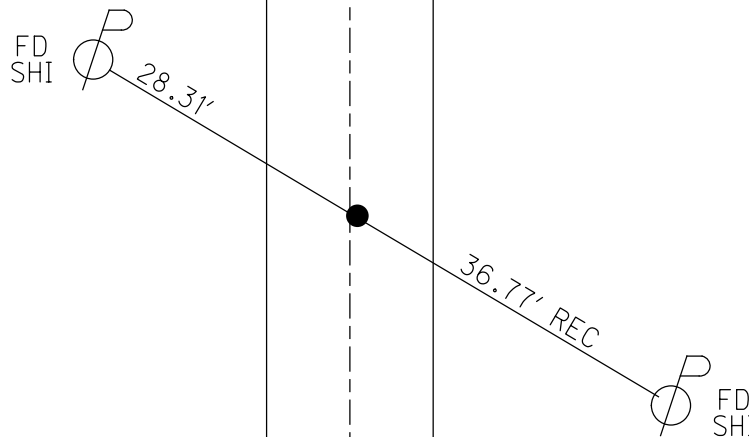
GEOID: _____

GRID: NORTHING: _____

EASTING: _____



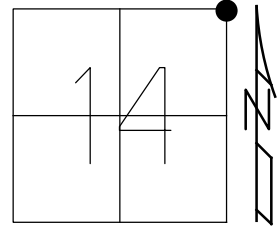
RECORD:
 STA 331+26.26
 FD R.R.SPIKE
 2" DOWN
 SET P.K.NAIL
 1971
 FD P.K./WASHER
 6/30/04, DCH
 SET MAG/WASHER
 9/03/04, DCH
 D.N.F.
 7/23/20, JMR



O.D.O.T. DISTRICT 2 SURVEY OFFICE (USE ONLY)

PERSONNEL _____ REFERENCE NO. 16 SHEET 18 OF 18
 NOTES RHOADES DATE 7/20/22 ROUTE SR 510
 H.C. RHOADES WEATHER CLOUDY COUNTY SANDUSKY
 R.C. WHITAKER TEMP. 77° TOWNSHIP RILEY
 DWG BY WHITAKER PID PVTRN SECTION 14
 T 5 N R 16 E

TYPE MONUMENT SM. R.R.SPIKE
~~ON SURFACE~~ - BELOW ON
 OFFSET \odot PAVEMENT 2' LT : ~~RT~~
- TO - EDGE PAVEMENT
 STATION: 345+20



HORZ.DATUM: NAD83 2011 GEOID: NAVD88 2012A
 GRID: NORTHING: 632318.015 EASTING: 1838696.785

RECORD:
 STA 334+62.63
 FD R.R.SPIKE
 1" DOWN
 SET P.K.NAIL
 1971
 FD P.K./WASHER
 6/30/04, DCH
 SET MAG/WASHER
 9/03/04, DCH
 D.N.F.
 7/23/20
 3/10/21, JMR
 FD SM. R.R. SPIKE
 2.5" DOWN
 REF16
 7/20/22, JMR

