

O.D.O.T. DISTRICT 2 SURVEY OFFICE (USE ONLY)

PERSONNEL \_\_\_\_\_

REFERENCE NO. 1

SHEET 1 OF 17

NOTES HOMAN

DATE 6/21/04

ROUTE SR 510

H.C. HOMAN

WEATHER SUNNY

COUNTY SANDUSKY

R.C. ADKINS

TEMP. 65°

TOWNSHIP GREEN CREEK

SECTION 14

DWG BY \_\_\_\_\_ PID \_\_\_\_\_

T 4 N R 16 E

TYPE MONUMENT IPIN

ON SURFACE - ~~BELOW~~ ON \_\_\_\_\_

OFFSET  $\text{\textcircled{C}}$  PAVEMENT ON \_\_\_\_\_ LT : RT

\_\_\_\_\_ TO \_\_\_\_\_ EDGE PAVEMENT

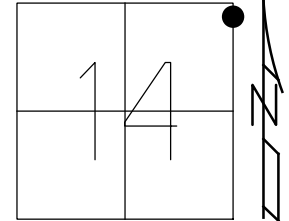
STATION: 26+73

HORIZ.DATUM: \_\_\_\_\_

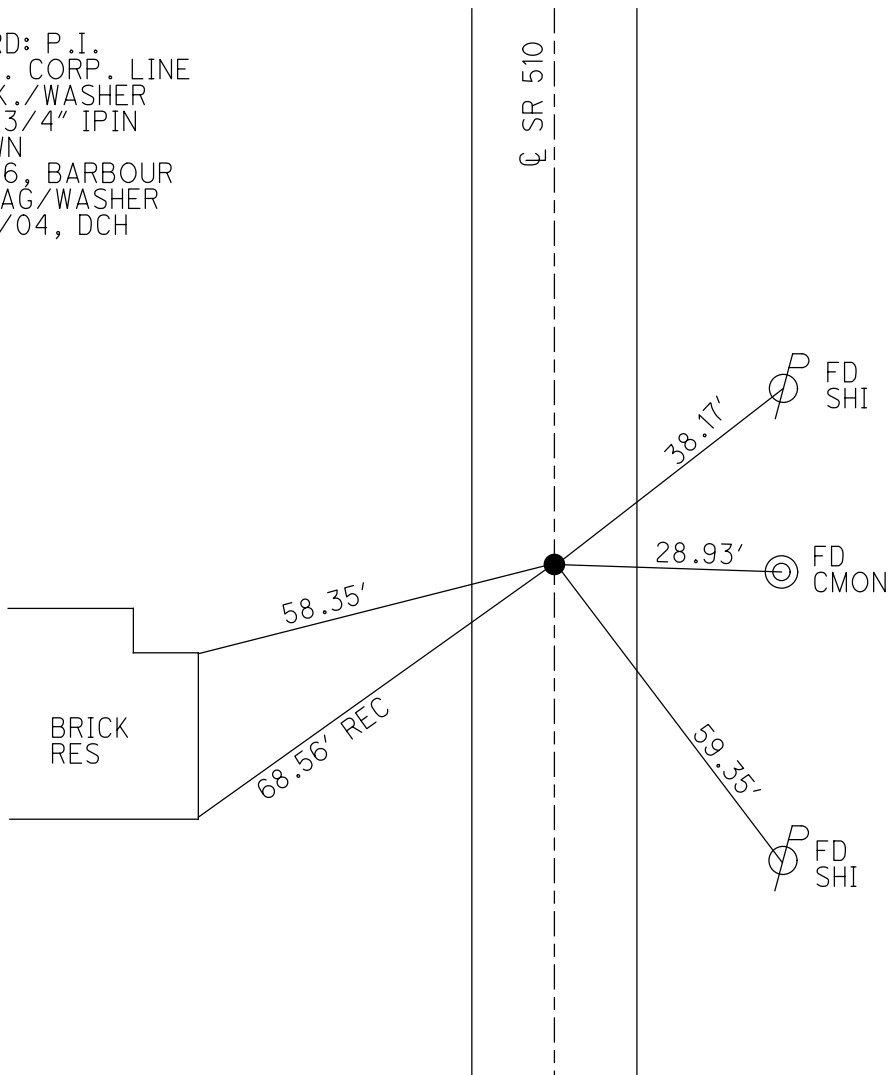
GEOID: \_\_\_\_\_

GRID: NORTHING: \_\_\_\_\_

EASTING: \_\_\_\_\_



RECORD: P.I.  
 OLD N. CORP. LINE  
 FD P.K./WASHER  
 ATOP 3/4" IPIN  
 1" DOWN  
 6/4/86, BARBOUR  
 SET MAG/WASHER  
 10/08/04, DCH



O.D.O.T. DISTRICT 2 SURVEY OFFICE

PERSONNEL

REFERENCE NO. 1

SHEET 1 OF 17

NOTES HOMAN

DATE 6-21-04

ROUTE SR 510

H.C. HOMAN

WEATHER SUNNY

COUNTY SANDUSKY

R.C. ADKINS

TEMP. 65°

TOWNSHIP GREEN CR

SECTION 11-12

T4N R16E

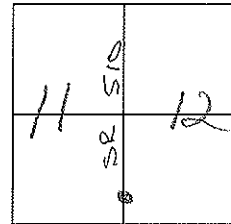
TYPE MONUMENT 3/4" IRON PIN

~~ON SURFACE~~ - BELOW 4"

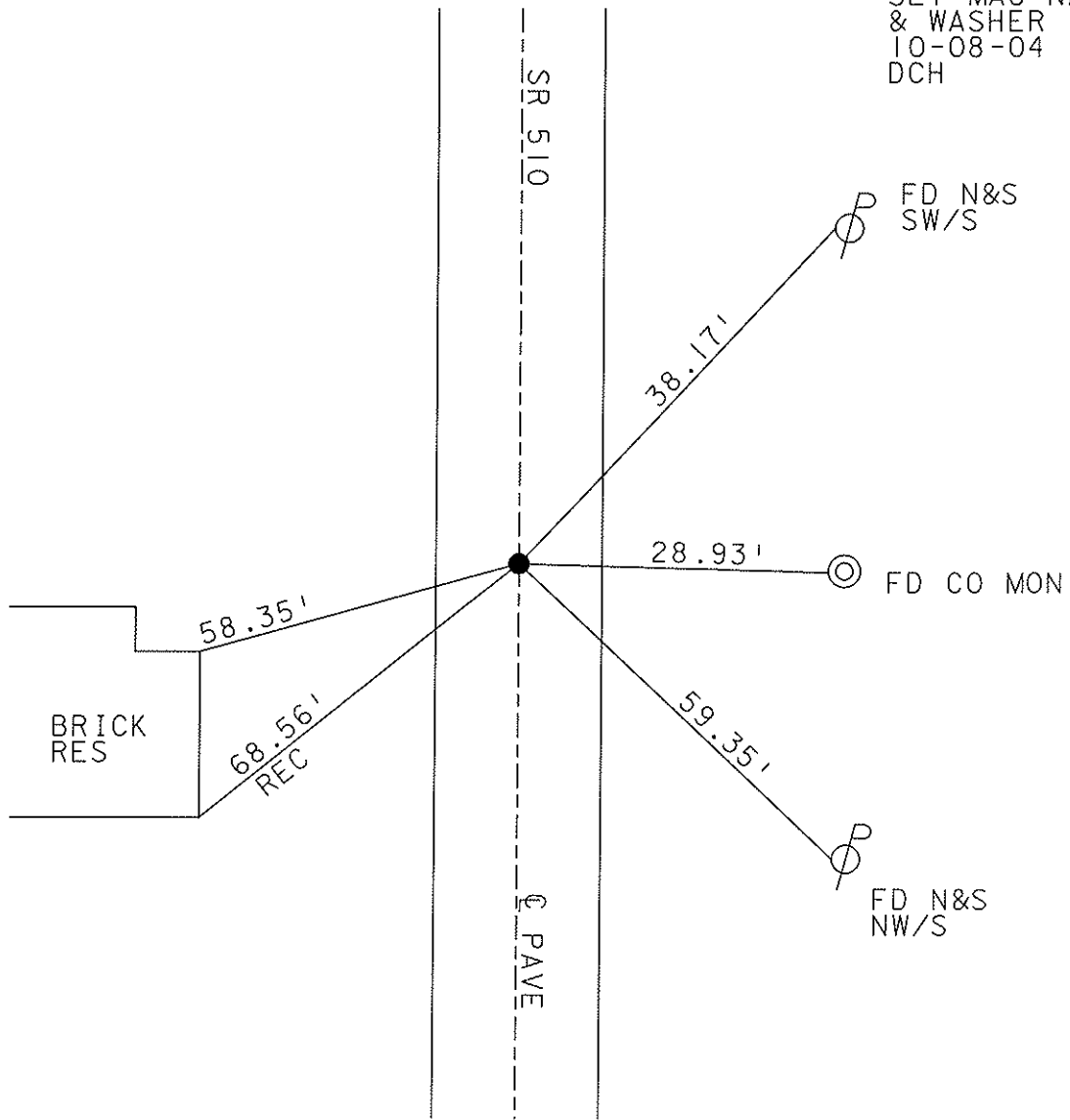
~~LEFT~~ - Q PAV'T - ~~RIGHT~~ ON

TO EDGE PAVEMENT

S.L.M. 26+73



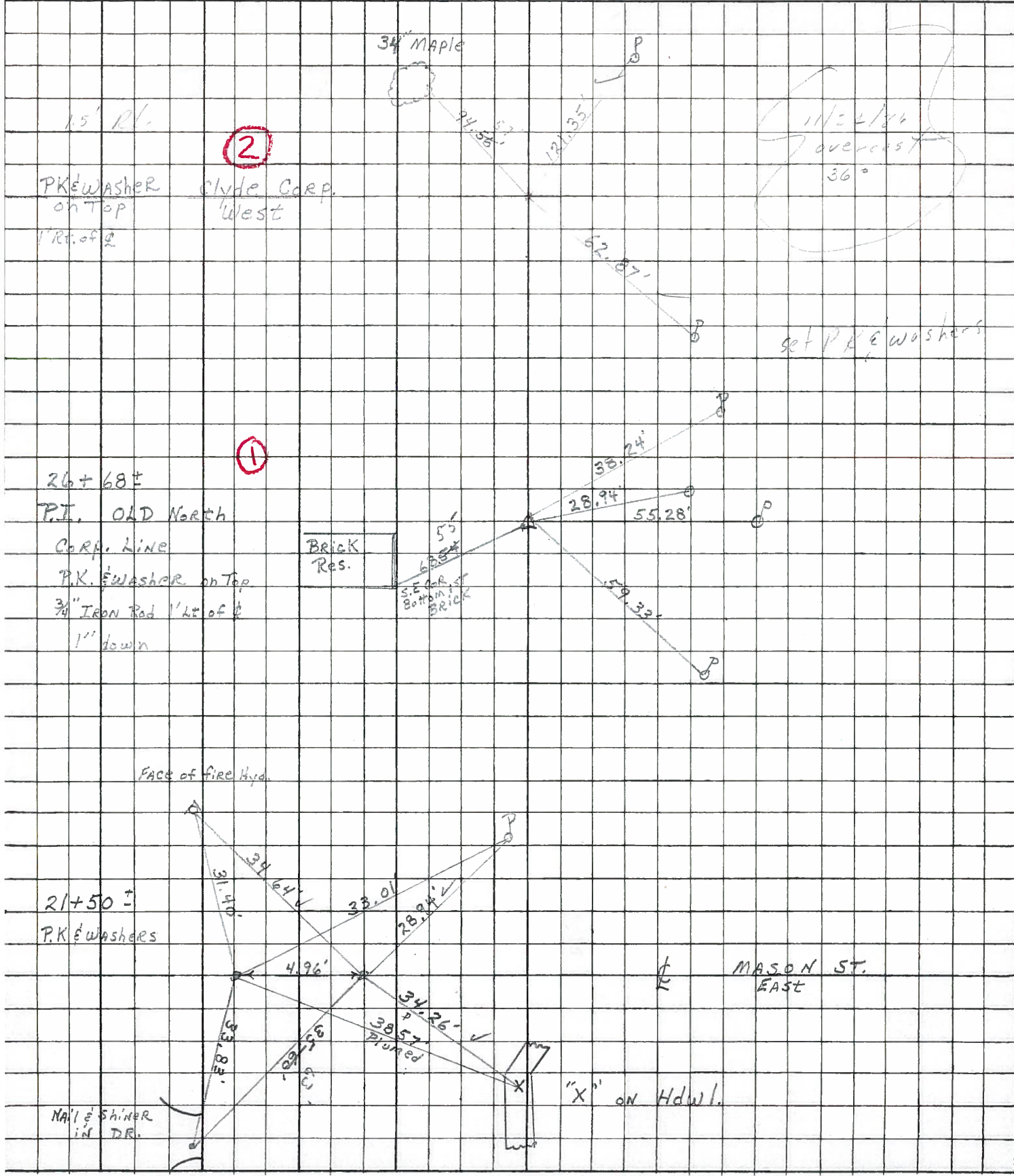
SET MAG NAIL  
& WASHER  
10-08-04  
DCH



PERSONNEL TITLE PERSONNEL TITLE  
 R. P. P. I. e \_\_\_\_\_  
 BARBOUR \_\_\_\_\_  
 GEYMAN \_\_\_\_\_

COUNTY SANDUSKY DATE 6/4/86  
 S. R. 510 WEATHER SPAINY  
 SEC. Clyde 0.21-0.83 TEMP. 65°  
North of US 20

DESCRIPTION Ties for Control Points LEFT CENTER LINE RIGHT JOB NO.



# Resurfaced 2004

LD-5-(25M-2-59)

SHEET NO. 1

8-21-72

DATE 4-13-71

PERSONNEL TITLE PERSONNEL TITLE

Schnaider

COUNTY Sandusky

DATE

Mosser

S. R. 510

WEATHER

Barbour

Geyman

SEC. US. 20 to US. 6

TEMP.

50°

DESCRIPTION

Ties for Control Points

JOB NO.

LEFT

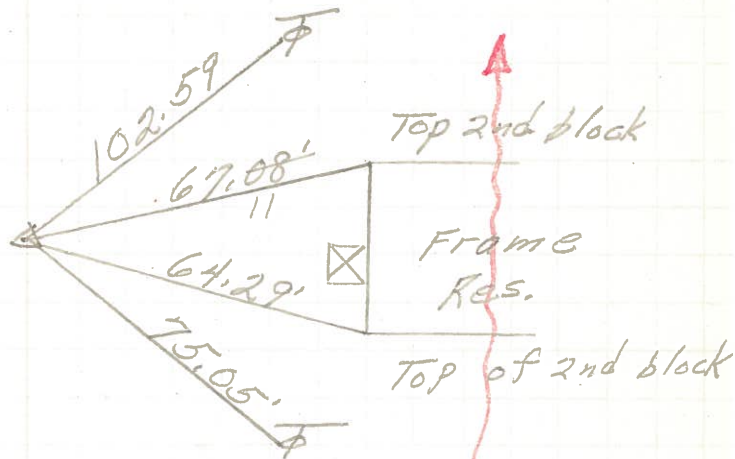
CENTER LINE

RIGHT

Reset P.K. Nails  
8-21-72

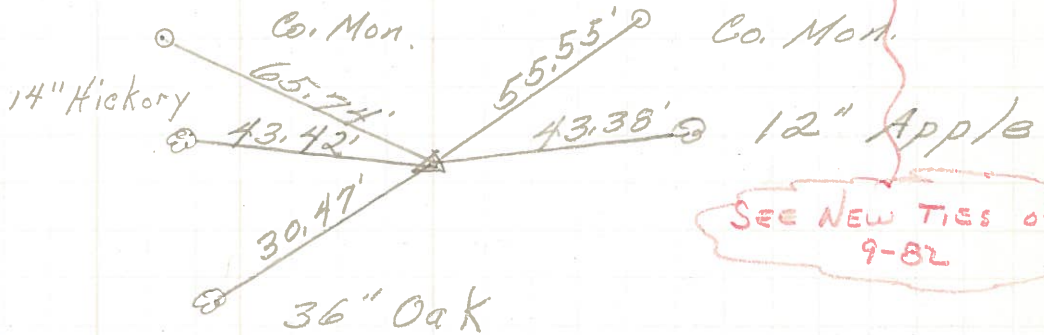
④

71+42.57  
R.R. spk.  
2" down



③

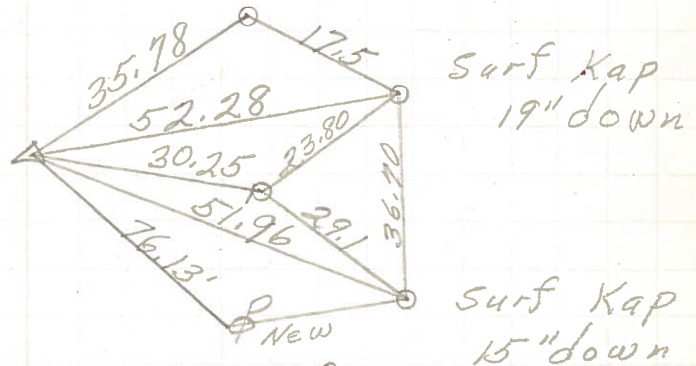
53+43  
Fd. R.R. spk.  
3' Rt. of  $\perp$



SEE NEW TIES OF 9-82

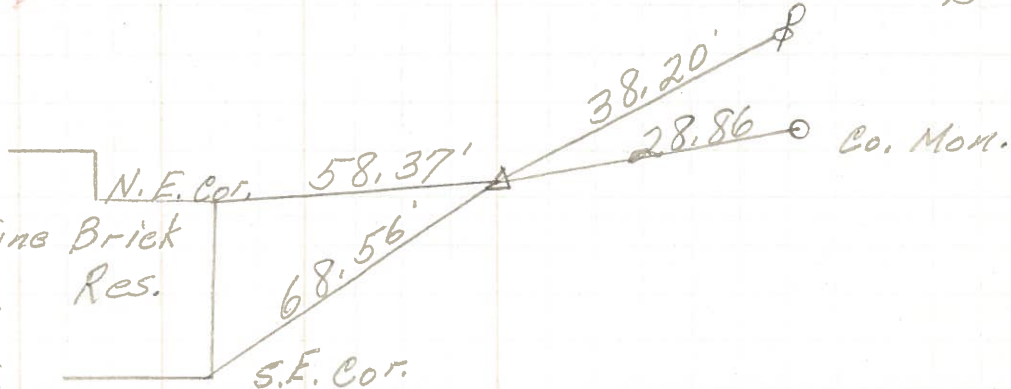
②

R.R. spk.  
center sec 11 & 12  
4" Rt. of  $\perp$



①

P.I.  
26+73  
North Corp. line Brick  
Clyde  
3/4" Iron Rod  
1' Left of  $\perp$   
1" down



PERSONNEL TITLE PERSONNEL TITLE  
Schneider \_\_\_\_\_ Potts \_\_\_\_\_

COUNTY Sandusky DATE 4-22-68

Mosser \_\_\_\_\_

S. R. 510 WEATHER Fair

Barbour \_\_\_\_\_

SEC. N. Corp. Clyde to 45. #6 TEMP. 60°

Redding \_\_\_\_\_

DESCRIPTION Ties for control points JOB NO. \_\_\_\_\_

