

O.D.O.T. DISTRICT 2 SURVEY OFFICE (USE ONLY)

PERSONNEL

REFERENCE NO. 2

SHEET 2 OF 18

NOTES RHOADES

DATE 5/25/21

ROUTE SR 510

H.C. NIESH

WEATHER CLOUDY

COUNTY SANDUSKY

R.C. RHOADES

TEMP. 86°

TOWNSHIP GREEN CREEK

DWG BY RHOADES PID PAVTRAIN

SECTION 11

T 4 N R 16 E

TYPE MONUMENT MAG/WASHER

ON SURFACE - ~~BELOW~~ ON

OFFSET  $\varnothing$  PAVEMENT 1' ~~LT~~ : RT

- TO - EDGE PAVEMENT

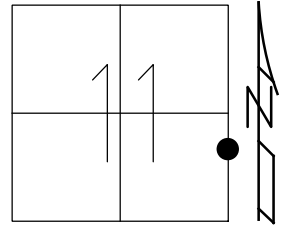
STATION: 40+35

HORIZ.DATUM: NAD83 2011

GEOID: NAVD88 2018

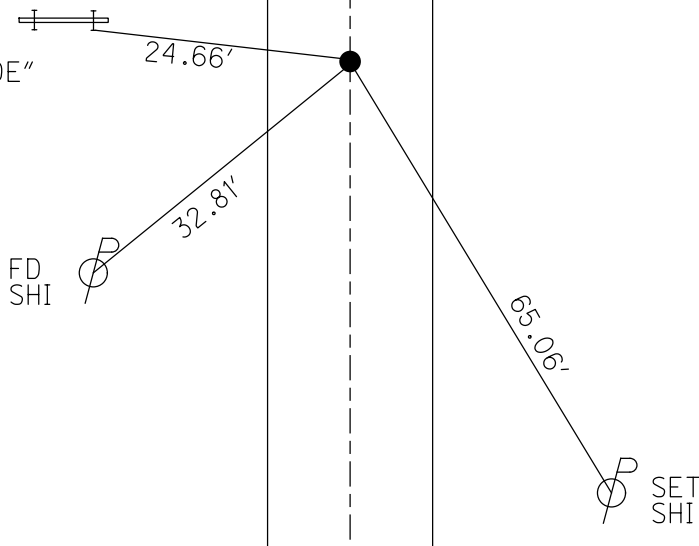
GRID: NORTHING: 601910.197

EASTING: 1838078.568



RECORD:  
 FD R.R.SPIKE  
 1971  
 SET MAG/WASHER  
 10/08/04, DCH  
 FD MAG/WASHER  
 REF2  
 5/25/21, TDN

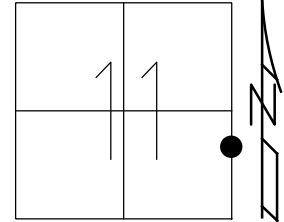
FD NOTCH  
 STEEL BEAM  
 1.5' UP  
 "WELCOME TO CLYDE"



O.D.O.T. DISTRICT 2 SURVEY OFFICE (USE ONLY)

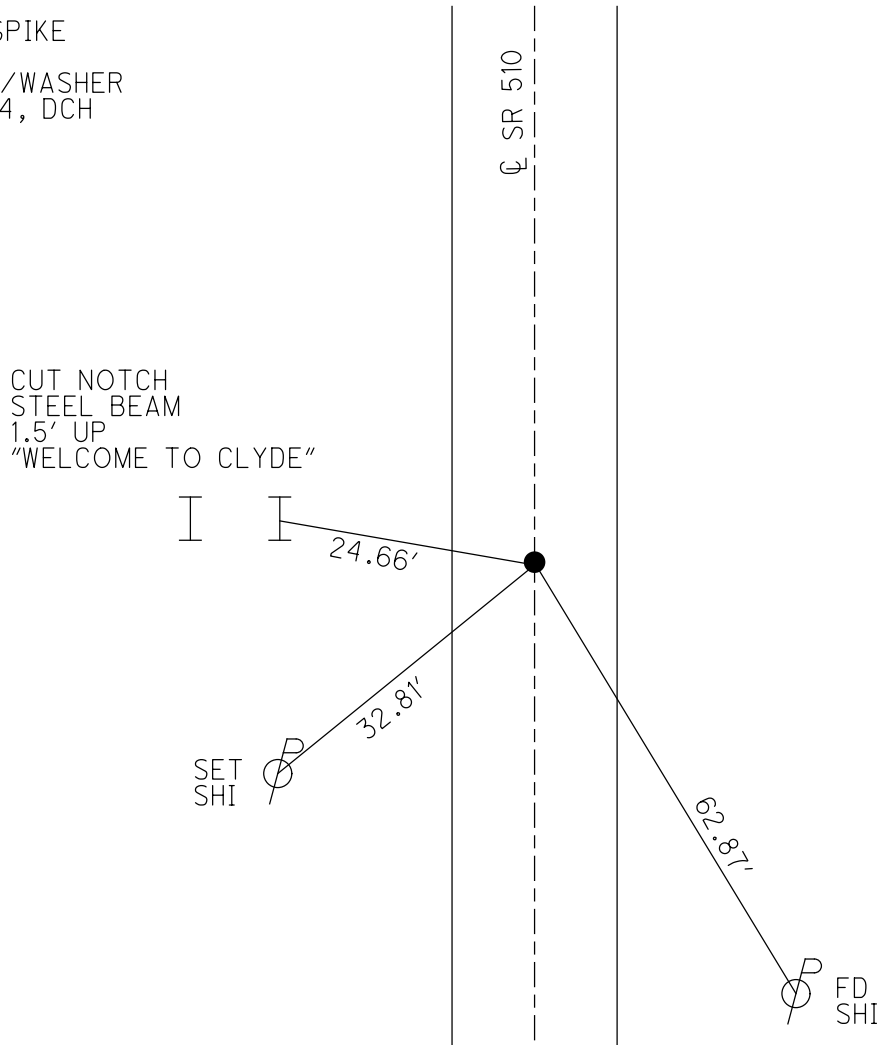
PERSONNEL \_\_\_\_\_ REFERENCE NO. 2 SHEET 2 OF 17  
 NOTES HOMAN DATE 6/21/04 ROUTE SR 510  
 H.C. HOMAN WEATHER SUNNY COUNTY SANDUSKY  
 R.C. ADKINS TEMP. 65° TOWNSHIP GREEN CREEK  
 SECTION 11  
 DWG BY \_\_\_\_\_ PID \_\_\_\_\_ T 4 N R 16 E

TYPE MONUMENT P.K./WASHER  
 ON SURFACE - ~~BELOW~~ ON \_\_\_\_\_  
 OFFSET  $\odot$  PAVEMENT 1' ~~±~~ : RT  
 - TO - EDGE PAVEMENT  
 STATION: 40+35



HORZ. DATUM: \_\_\_\_\_ GEOID: \_\_\_\_\_  
 GRID: NORTHING: \_\_\_\_\_ EASTING: \_\_\_\_\_

RECORD:  
 FD R.R.SPIKE  
 1971  
 SET MAG/WASHER  
 10/08/04, DCH



O.D.O.T. DISTRICT 2 SURVEY OFFICE

PERSONNEL

REFERENCE NO. 2

SHEET 2 OF 17

NOTES HOMAN

DATE 6-21-04

ROUTE SR 510

H.C. HOMAN

WEATHER SUNNY

COUNTY SANDUSKY

R.C. ADKINS

TEMP. 65°

TOWNSHIP GREEN CR

SECTION 11-12

T 4 N R 16 E

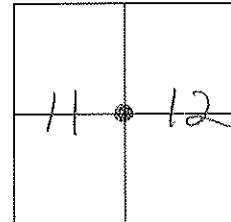
TYPE MONUMENT PK & WASHER

ON SURFACE - ~~BELOW~~ ON

~~LEFT - C PAVT - RIGHT~~ 1' RT

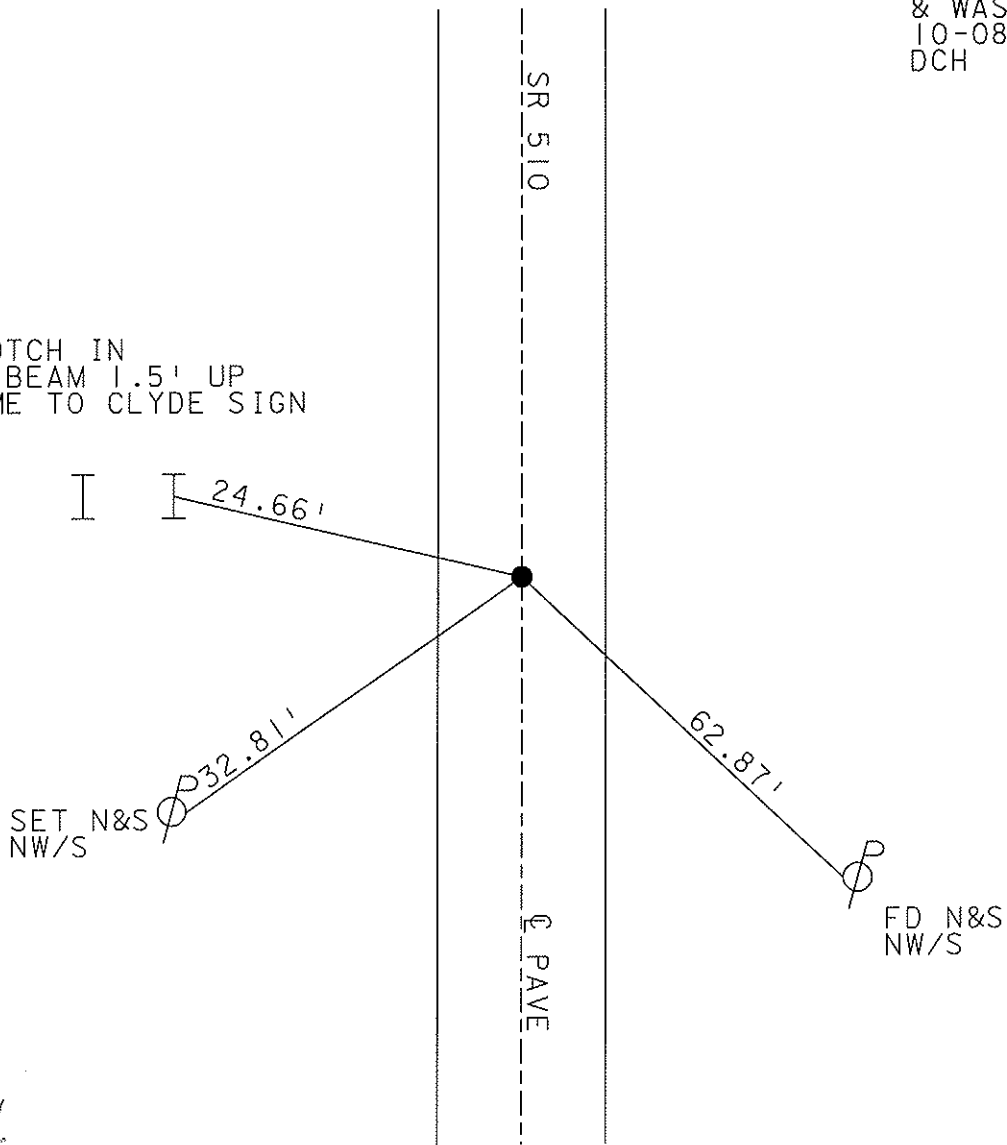
TO EDGE PAVEMENT

S.L.M. 40+35



SET MAG NAIL  
& WASHER  
10-08-04  
DCH

CUT NOTCH IN  
STEEL BEAM 1.5' UP  
WELCOME TO CLYDE SIGN

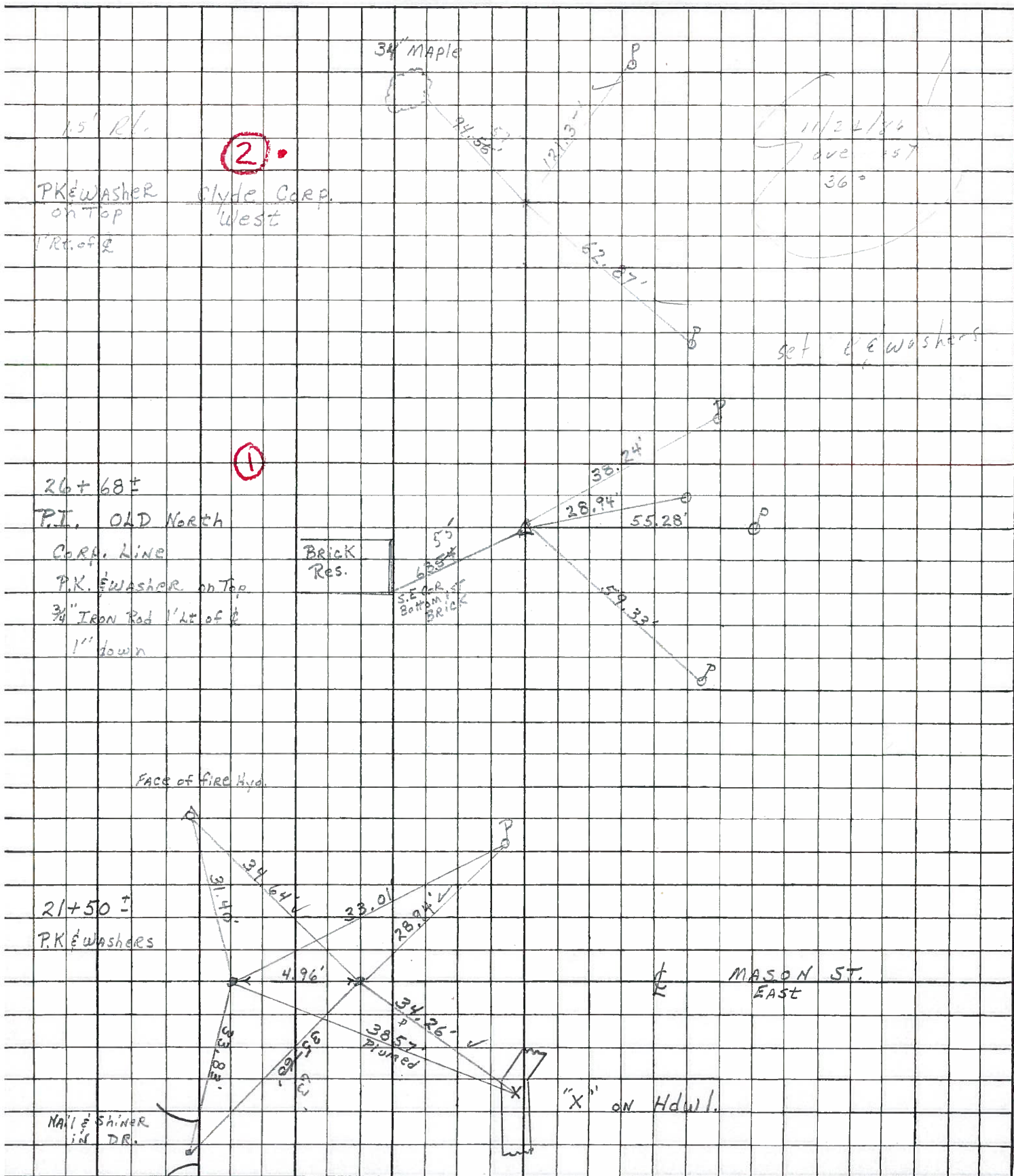


Revised 1971  
R.H. SPICER

PERSONNEL	TITLE	PERSONNEL	TITLE
RIPPLE			
BARBOUR			
COYMAN			

COUNTY SANDUSKY DATE 6/4/86  
 S. R. 510 WEATHER SWAMPY  
 SEC. C/ide 0.21-0.83 TEMP. 65°  
/North of US 20

DESCRIPTION Ties for Control Points JOB NO. \_\_\_\_\_



PERSONNEL TITLE PERSONNEL TITLE

Schneider  
Mosser  
Barbour

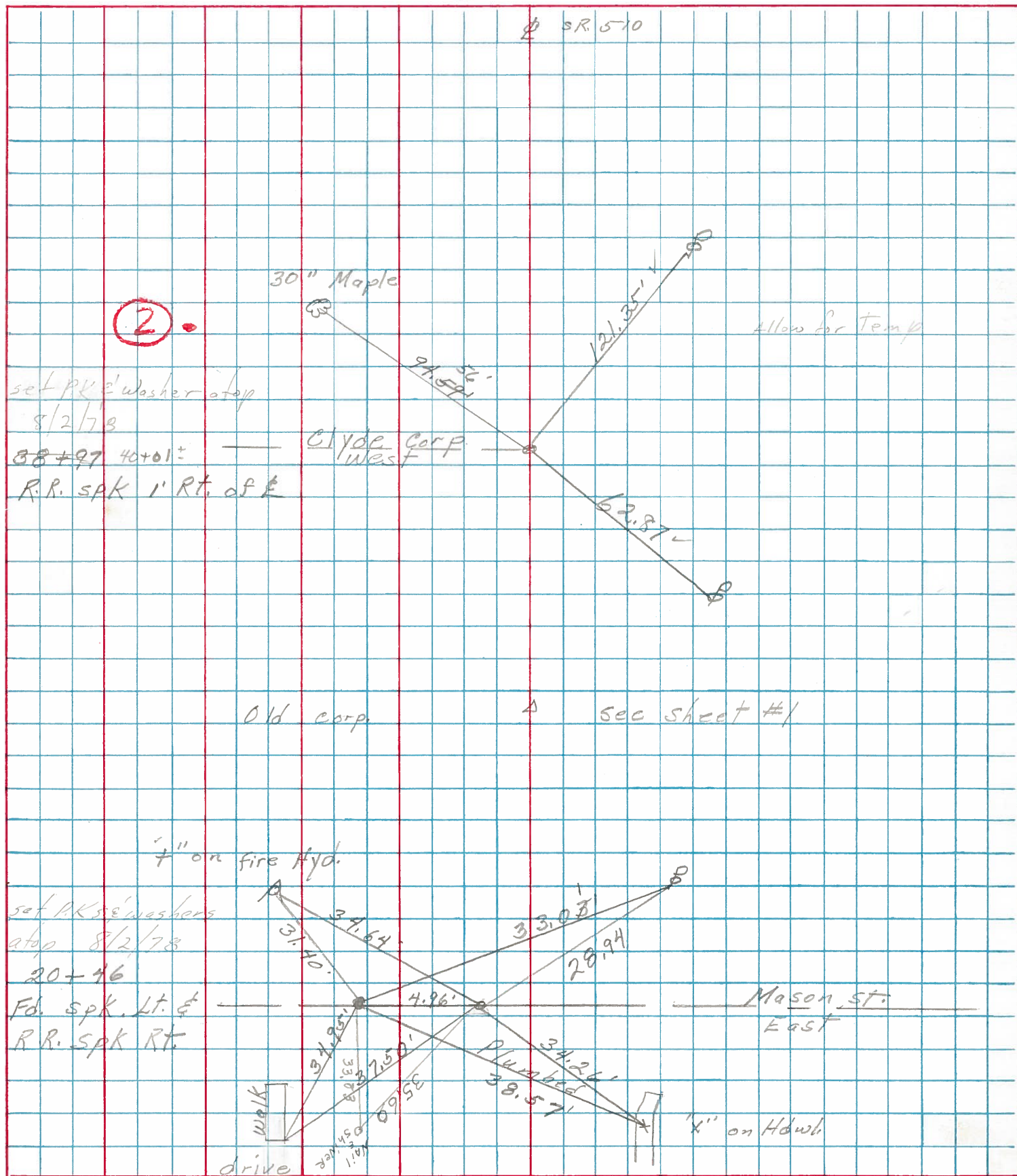
COUNTY Sandusky DATE 3-15-78

S. R. 510 WEATHER Partly cloudy

SEC. Clyde 0.21-0.83 TEMP. 40°

DESCRIPTION Ties for control Points North of 45 20 JOB NO.

LEFT CENTER LINE RIGHT

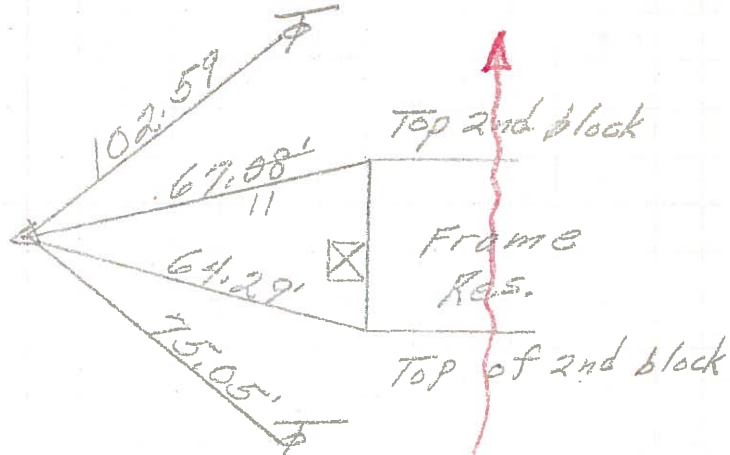


PERSONNEL	TITLE	PERSONNEL	TITLE	COUNTY	DATE	WEATHER	TEMP.
Schneider				Sandusky	8-21-72	Fair	50°
Mosser				S. R.	510		
Barbour				SEC.	U.S. 20 to U.S. 6		
Geyman							
DESCRIPTION				Ties for Control Points		JOB NO.	
LEFT		CENTER LINE		RIGHT			

Reset P.K. Nails  
8-21-72

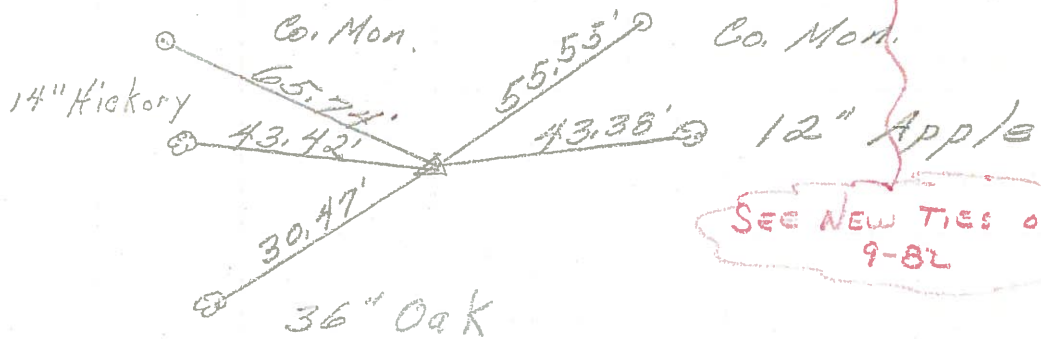
(4)

7/4 42.57  
R.R. spk.  
2" down



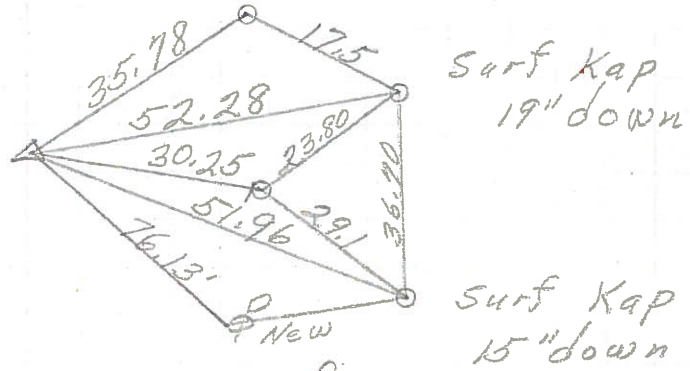
(3)

53 + 43  
Fd. R.R. spk.  
3' Rt. of  $\perp$



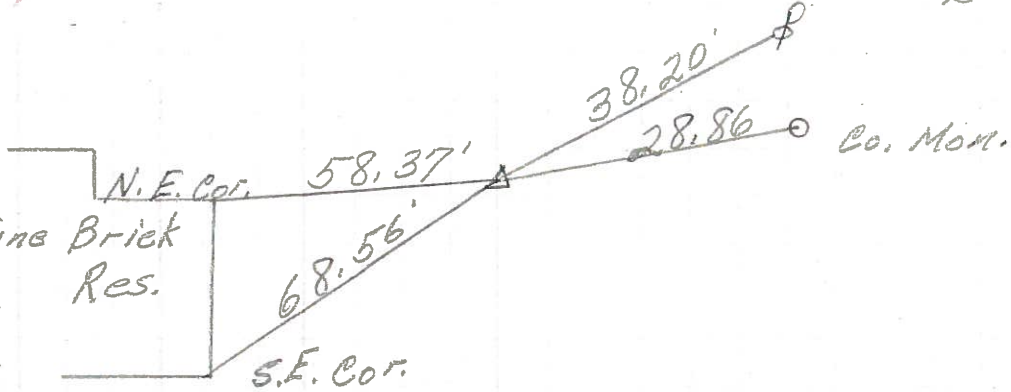
(2)

R.R. spk.  
center sec 11 & 12  
4" Rt. of  $\perp$

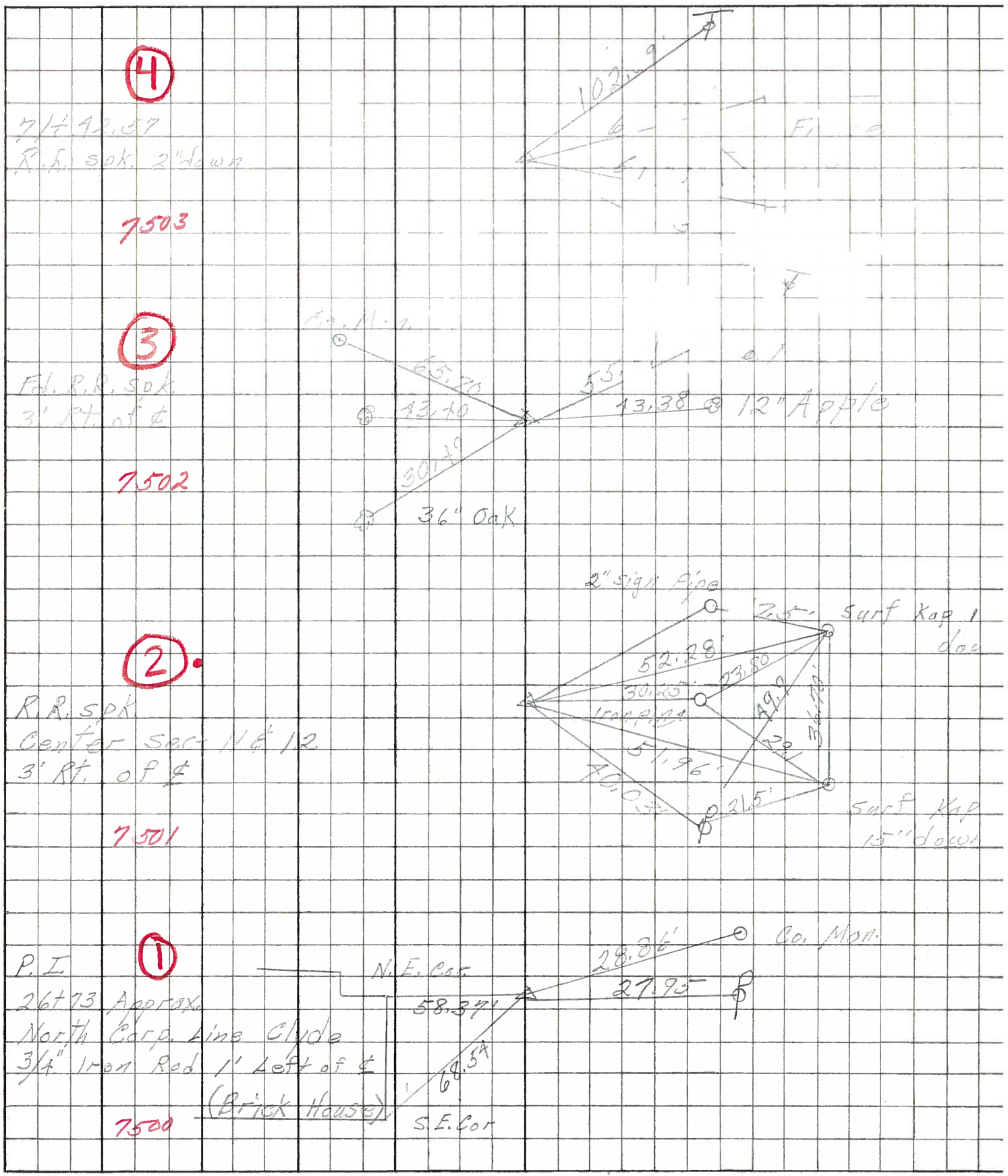


(1)

P.I.  
26 + 73  
North Corp. line Brick  
Clyde Res.  
3/4" Iron Rod  
1' Left of  $\perp$   
1" down



PERSONNEL TITLE PERSONNEL TITLE COUNTY Sandusky DATE 4-22-68  
 Mosser \_\_\_\_\_ S. R. 510 WEATHER Fair  
 Barbour \_\_\_\_\_  
 Redding \_\_\_\_\_ SEC. N. Corp. Clyde to U.S. #6 TEMP. 6  
 DESCRIPTION Ties for control points JOB NO. \_\_\_\_\_



④

7/4 42.57  
R.R. sok. 2" down

7503

③

Fed. R.R. sok  
3' rt. of &

7502

②

R.R. sok  
Center sec- 11 & 12  
3' rt. of &

7501

①

P.I.  
26+73 Approx  
North Corp. Ains Clyde  
3/4" Iron Rod 1' left of &  
(Brick House)  
S.E. Cor

7500