

O.D.O.T. DISTRICT 2 SURVEY OFFICE (USE ONLY)

PERSONNEL _____ REFERENCE NO. 3 SHEET 3 OF 17

NOTES GARRETT DATE 7/23/20 ROUTE SR 510
 H.C. RHOADES WEATHER CLOUDY COUNTY SANDUSKY
 R.C. MAHLER TEMP. 77° TOWNSHIP GREEN CREEK

DWG BY RHOADES PID PAVE TRAIN SECTION 11
 T 4 N R 16 E

TYPE MONUMENT MAG NAIL

ON SURFACE - ~~BELOW~~ ON

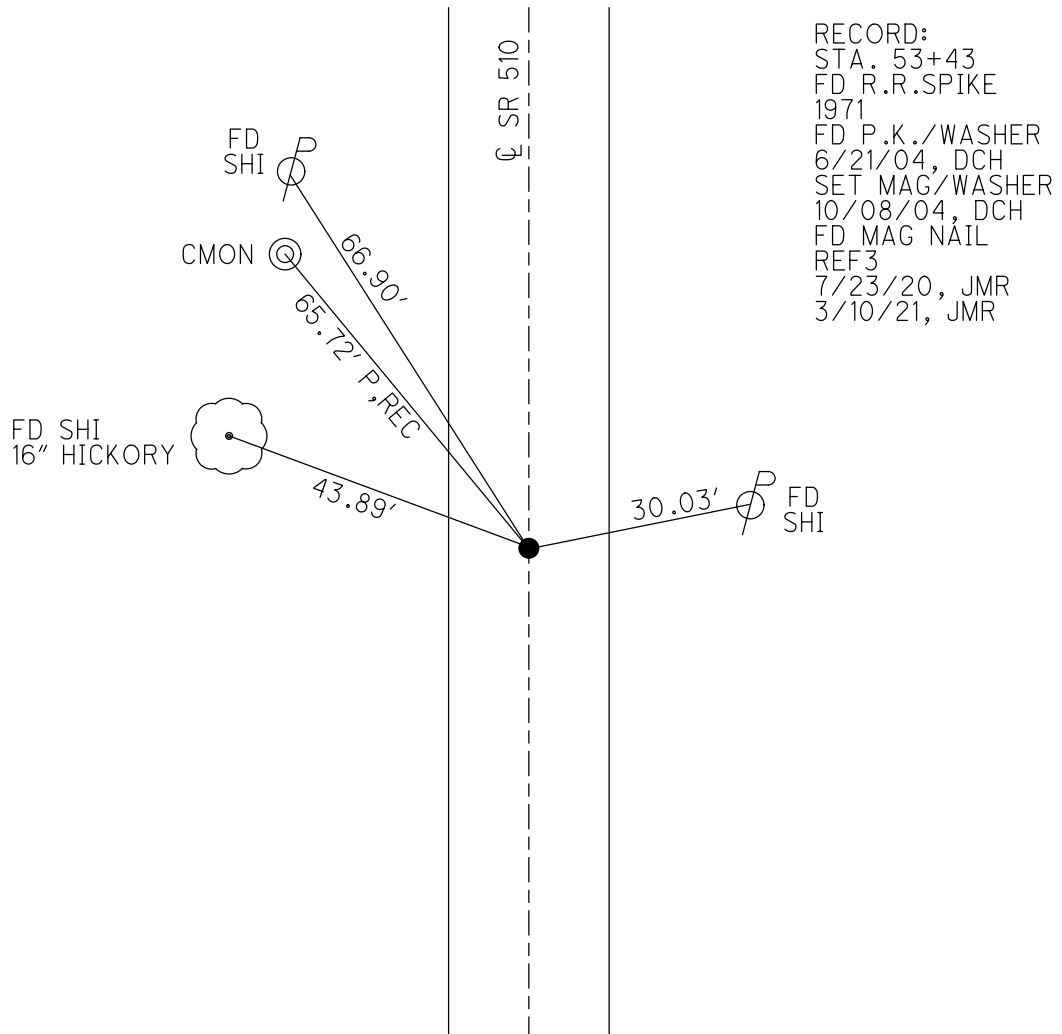
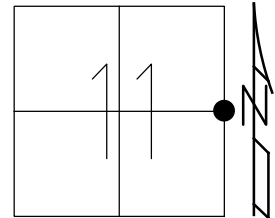
OFFSET CL PAVEMENT 4' ~~RT~~ : RT

5.6' TO RT EDGE PAVEMENT

STATION: 53+48

HORZ.DATUM: NAD83 2011 GEOID: NAVD88 2012A

GRID: NORTHING: 603241.766 EASTING: 1838088.871



RECORD:
 STA. 53+43
 FD R.R.SPIKE
 1971
 FD P.K./WASHER
 6/21/04, DCH
 SET MAG/WASHER
 10/08/04, DCH
 FD MAG NAIL
 REF3
 7/23/20, JMR
 3/10/21, JMR

O.D.O.T. DISTRICT 2 SURVEY OFFICE (USE ONLY)

PERSONNEL _____

REFERENCE NO. 3

SHEET 3 OF 17

NOTES HOMAN

DATE 6/21/04

ROUTE SR 510

H.C. HOMAN

WEATHER SUNNY

COUNTY SANDUSKY

R.C. ADKINS

TEMP. 70°

TOWNSHIP GREEN CREEK

DWG BY _____ PID _____

SECTION 11

T 4 N R 16 E

TYPE MONUMENT P.K./WASHER

ON SURFACE - ~~BELOW~~ ON

OFFSET \varnothing PAVEMENT 4' ~~LT~~ : RT

5.6' TO RT EDGE PAVEMENT

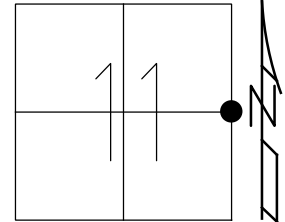
STATION: 53+48

HORZ.DATUM: _____

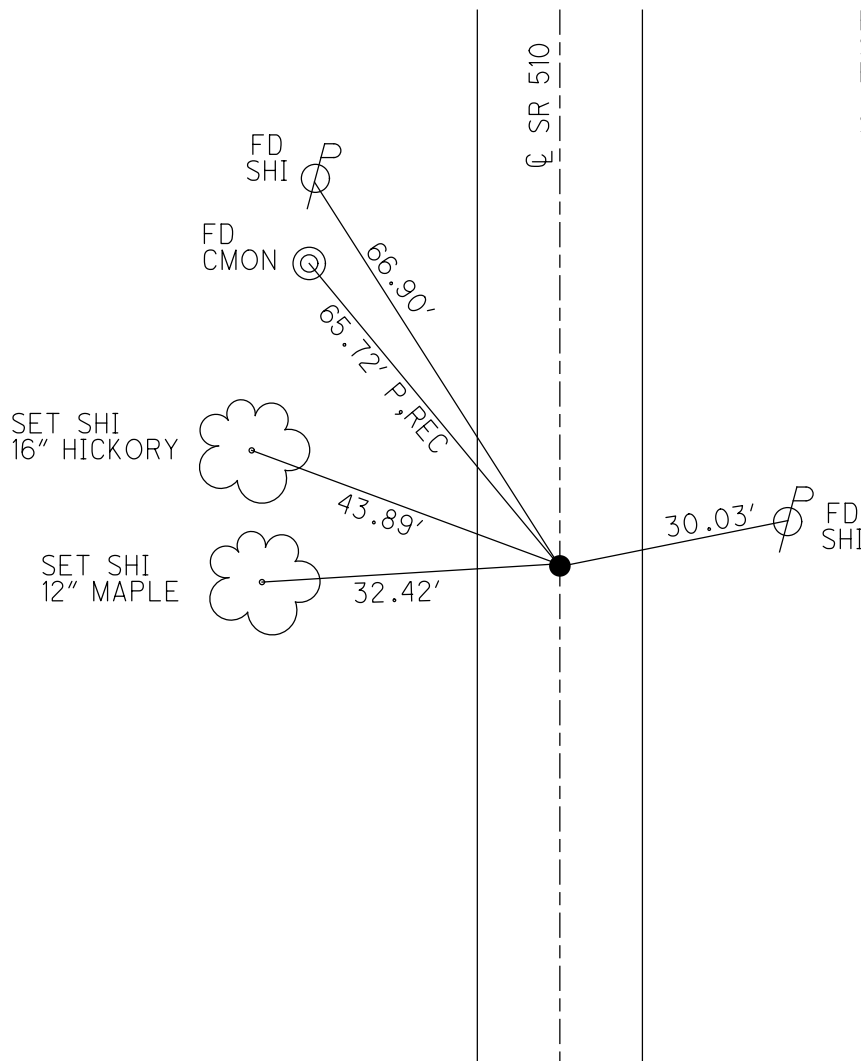
GEOID: _____

GRID: NORTHING: _____

EASTING: _____



RECORD:
 STA. 53+43
 FD R.R.SPIKE
 1971
 SET MAG/WASHER
 10/08/04, DCH



O.D.O.T. DISTRICT 2 SURVEY OFFICE

PERSONNEL

REFERENCE NO. 3

SHEET 3 OF 17

NOTES HOMAN

DATE 6-21-04

ROUTE SR 510

H.C. HOMAN

WEATHER SUNNY

COUNTY SANDUSKY

R.C. ADKINS

TEMP. 70°

TOWNSHIP GREEN CR

SECTION 11-12

T 4 N R 16 E

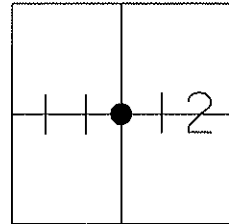
TYPE MONUMENT PK & WASHER

ON SURFACE - ~~BELOW~~ ON

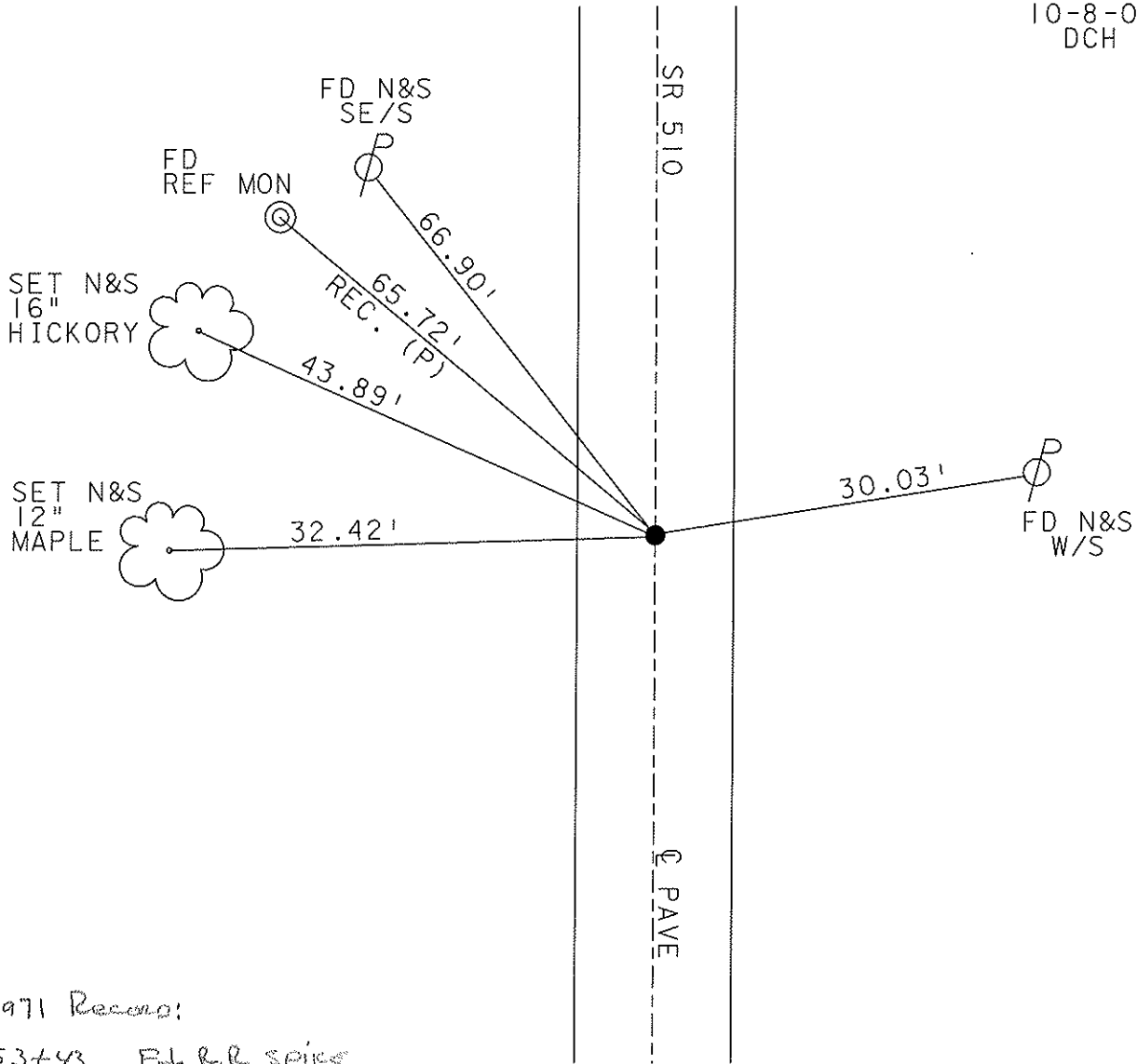
~~LEFT - Q PAVT~~ - RIGHT 4' RT

5.6' TO RT EDGE PAVEMENT

S.L.M. 53+48



RESET MAG NAIL
10-8-04
DCH



O.D.O.T. DISTRICT 2 SURVEY OFFICE

PERSONNEL _____

REFERENCE NO. 3

SHEET 1 OF 15

NOTES Ripple

H.C. BARBOUR

R.C. Geyman

DATE 8/14/90

WEATHER SUNNY

TEMP. 75°

ROUTE SR#510

COUNTY SANDUSKY

TOWNSHIP GREEN CREEK

SECTION _____

T 4 N R 16 E

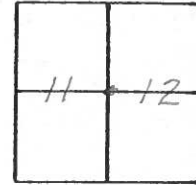
TYPE MONUMENT Set P.K. & Washer

ON SURFACE - BELOW A Top P.K. & Washer A Top R.R. Spike

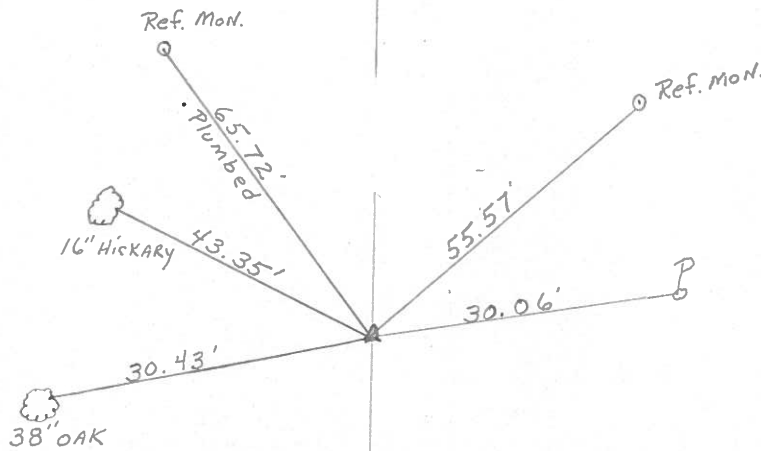
LEFT - CL PAV'T. - RIGHT 3'± RT. & PAVT

_____JO_____EDGE PAVEMENT

S.L.M. _____



53+43



L.R/W SR#510



County Sandusky S.R. #510

Date 9/9/82

Township Green Creek

Weather sunny

Section # 11, 12

Temp. 75°

T4N, R16E

Personnel Cranin

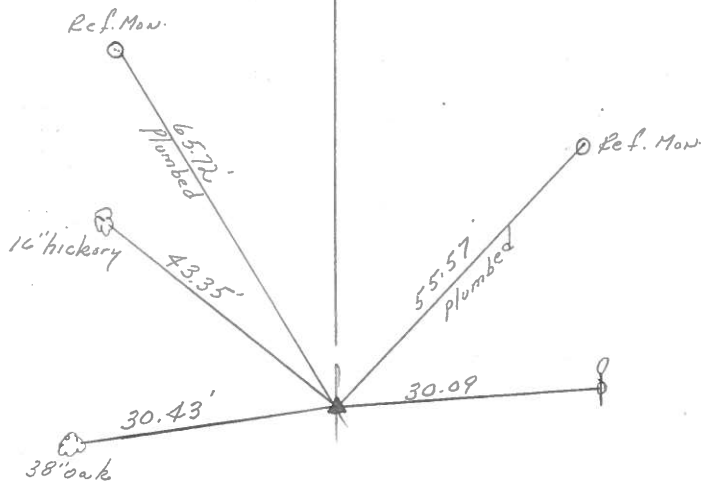
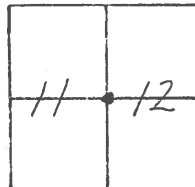
Ripple

Geyman

Mosser

Barbour

#3

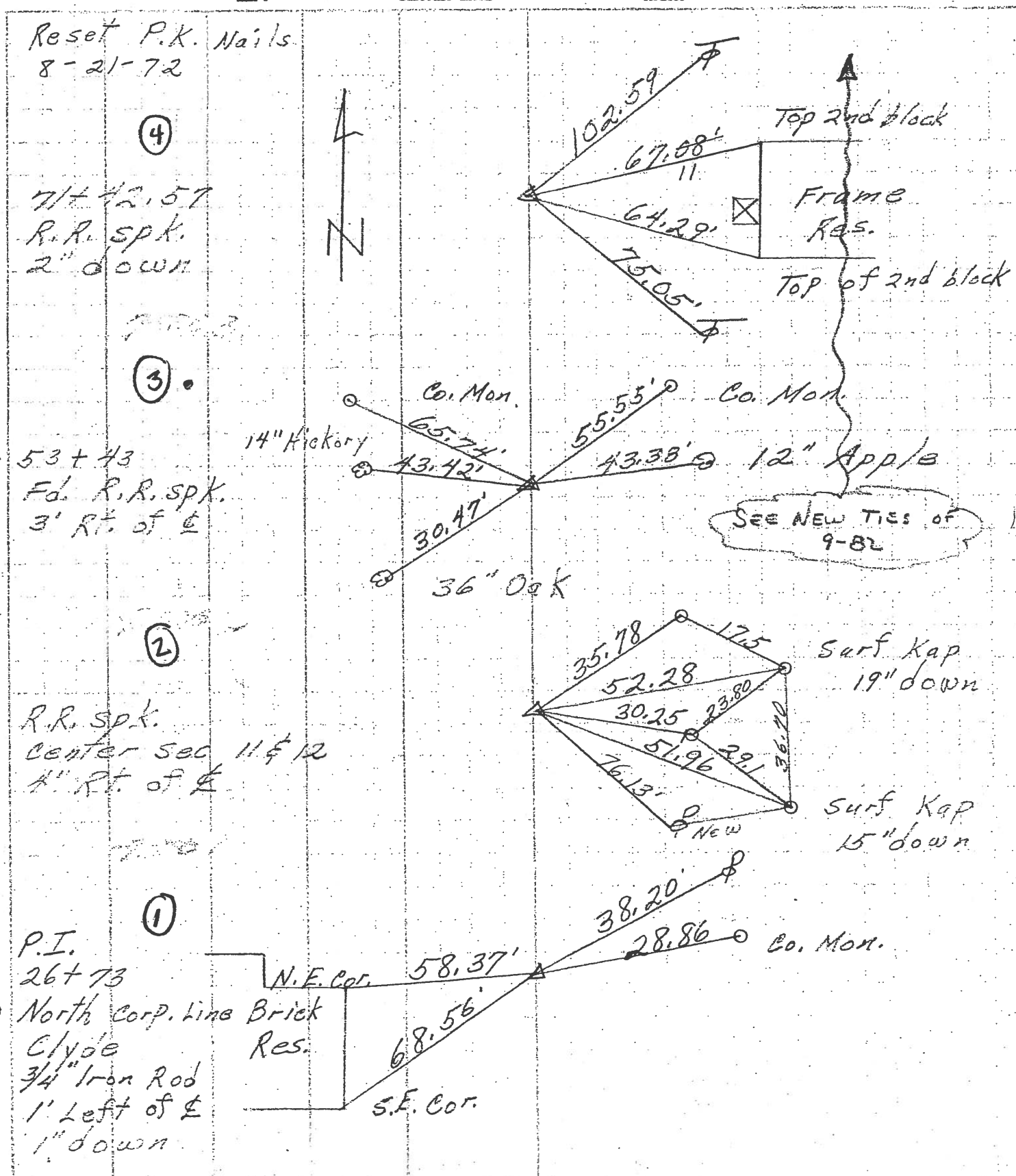


53+43
set P.K. & washer at top P.K.
& washer at top R.R. spike
3 ± R.L. & Pavement

R.R./W S.R. #510

PERSONNEL	TITLE	PERSONNEL	TITLE	COUNTY	DATE	WEATHER	TEMP
<u>Schneider</u>				<u>Sandusky</u>	<u>8-21-72</u>	<u>Fair</u>	<u>50°</u>
<u>Mosser</u>				S. R. <u>510</u>			
<u>Barbour</u>				SEC. <u>U.S. 20 to U.S. 6</u>			
<u>Geyman</u>							

DESCRIPTION Ties for control points JOB NO. _____



Reset P.K. Nails
8-21-72

④

71+42.57
R.R. spk.
2" down

③

53+43
Fd. R.R. spk.
3' Rt. of ϵ

②

R.R. spk.
center sec 11 & 12
4" Rt. of ϵ

①

P.I.
26+73
North Corp. line Brick
Clyde
3/4" Iron Rod
1' Left of ϵ
1" down

SEE NEW TIES OF 9-82

Surf Kap
19" down

Surf Kap
15" down

S.E. Cor.
N.E. Cor.

PERSONNEL TITLE PERSONNEL TITLE

Schneider _____
 Potts _____
 Mosser _____
 Barbour _____
 Redding _____

COUNTY Sandusky DATE 4-22-68

S. R. 510 WEATHER Fair

SEC. N. Corp. Clyde to U.S. #6 TEMP. 6

DESCRIPTION Ties for control points LEFT CENTER LINE RIGHT JOB NO.

