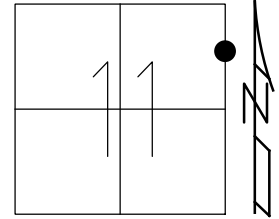


O.D.O.T. DISTRICT 2 SURVEY OFFICE (USE ONLY)

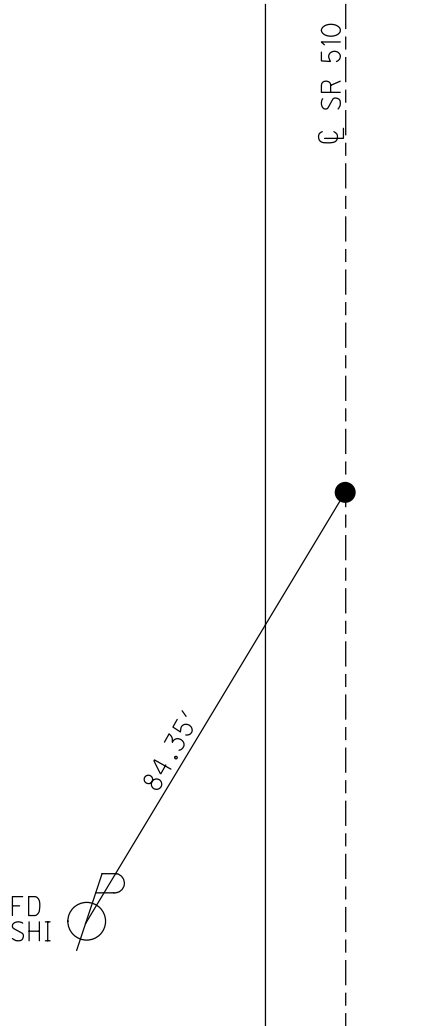
PERSONNEL _____ REFERENCE NO. 4 SHEET 4 OF 17
 NOTES GARRETT DATE 7/23/20 ROUTE SR 510
 H.C. RHOADES WEATHER CLOUDY COUNTY SANDUSKY
 R.C. MAHLER TEMP. 77° TOWNSHIP GREEN CREEK
 SECTION 11
 DWG BY RHOADES PID PAVE TRAIN T 4 N R 16 E

TYPE MONUMENT MAG NAIL
 ON SURFACE - ~~BELOW~~ ON
 OFFSET \varnothing PAVEMENT 1' LT : ~~RT~~
- TO - EDGE PAVEMENT
 STATION: 71+77



HORZ.DATUM: NAD83 2011 GEOID: NAVD88 2012A
 GRID: NORTHING: 605045.955 EASTING: 1838094.646

RECORD:
 STA. 71+42.57
 FD R.R. SPIKE
 2" DOWN
 1971
 FD P.K./WASHER
 6/21/04, DCH
 SET MAG/WASHER
 10/08/04, DCH
 FD MAG NAIL
 REF4
 7/23/20, JMR
 3/10/21, JMR



O.D.O.T. DISTRICT 2 SURVEY OFFICE (USE ONLY)

PERSONNEL _____

REFERENCE NO. 4

SHEET 4 OF 17

NOTES HOMAN

DATE 6/21/04

ROUTE SR 510

H.C. HOMAN

WEATHER SUNNY

COUNTY SANDUSKY

R.C. ADKINS

TEMP. 65°

TOWNSHIP GREEN CREEK

SECTION 11

DWG BY _____ PID _____

T 4 N R 16 E

TYPE MONUMENT P.K./WASHER

ON SURFACE - ~~BELOW~~ ON

OFFSET \odot PAVEMENT 1' LT : ~~RT~~

- TO - EDGE PAVEMENT

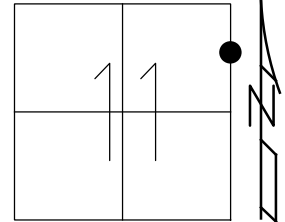
STATION: 71+77

HORZ.DATUM: _____

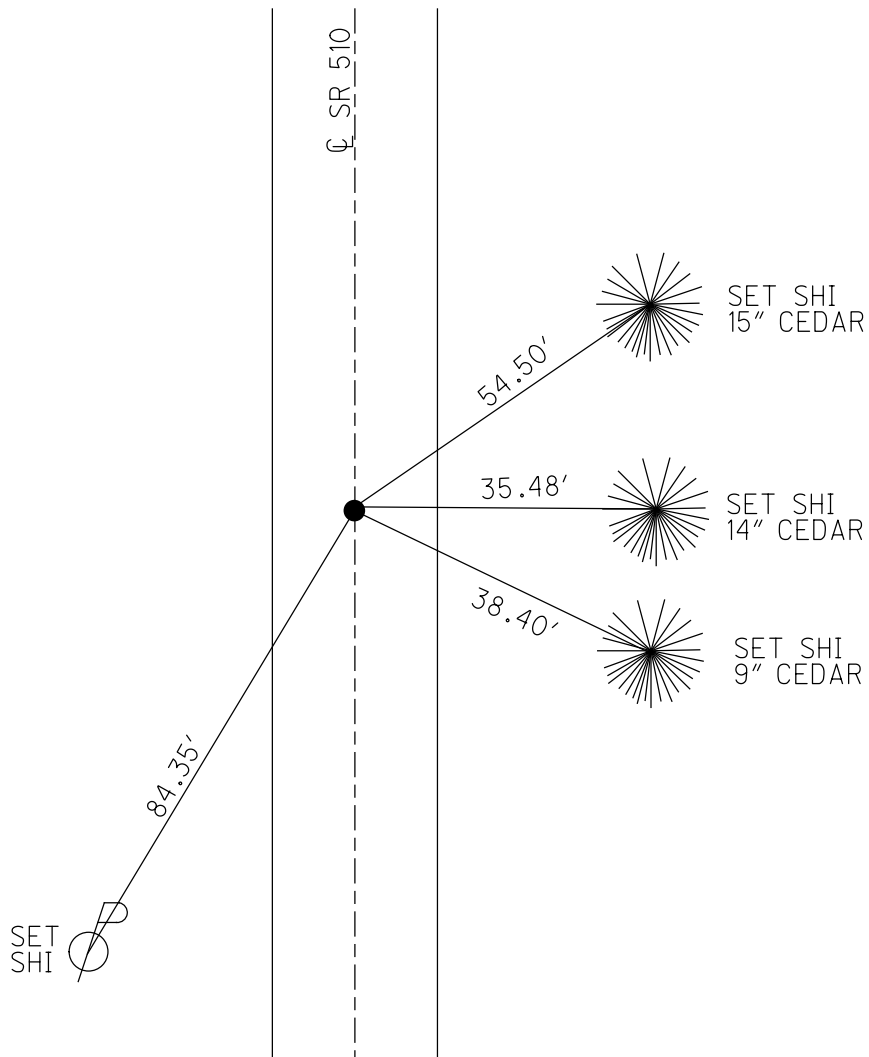
GEOID: _____

GRID: NORTHING: _____

EASTING: _____



RECORD:
 STA. 71+42.57
 FD R.R. SPIKE
 2" DOWN
 1971
 SET MAG/WASHER
 10/08/04, DCH



O.D.O.T. DISTRICT 2 SURVEY OFFICE

PERSONNEL _____

REFERENCE NO. 4

SHEET 4 OF 17

NOTES HOMAN _____

DATE 6-21-04

ROUTE SR 510

H.C. HOMAN _____

WEATHER SUNNY

COUNTY SANDUSKY

R.C. ADKINS _____

TEMP. +65°

TOWNSHIP GREEN CREEK

SECTION 11&12

T 4 N R 16 E

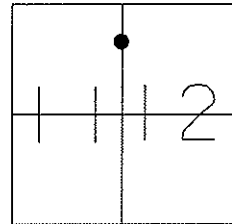
TYPE MONUMENT P.K. & WASHER

ON SURFACE ~~-BELOW-~~ YES

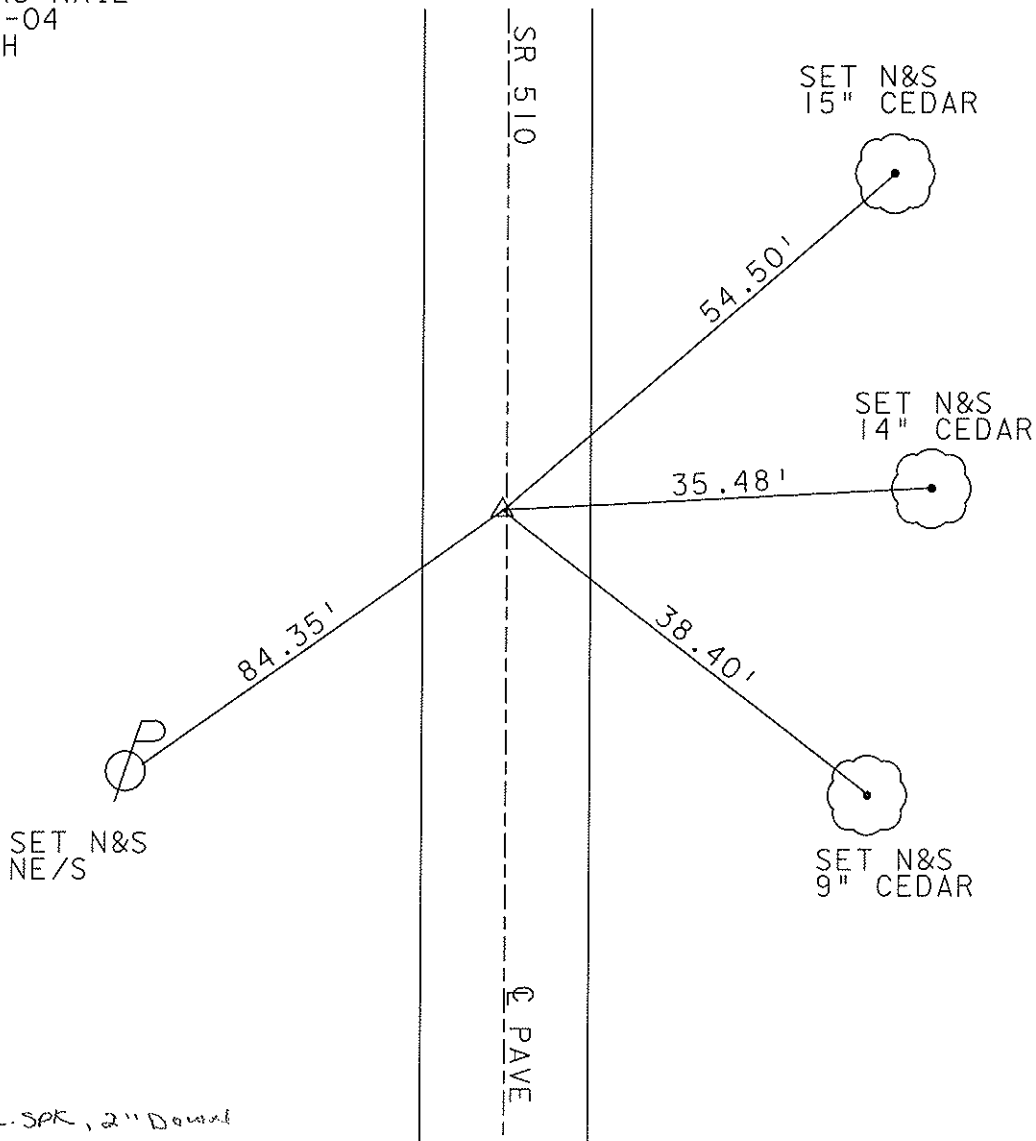
LEFT ~~-C PAVT -RIGHT-~~ 1' LT

TO EDGE PAVEMENT

S.L.M. 71+77



RESET MAG NAIL
10-8-04
DCH



1971 R.R. SPR, 2" DOWEL
Record: 71+42.57

O.D.O.T. DISTRICT 2 SURVEY OFFICE

PERSONNEL _____

REFERENCE NO. 4 SHEET 2 OF 15

NOTES Ripple

H.C. Barbour

R.C. Geyman

DATE 8/14/90

WEATHER SUNNY

TEMP. 75°

ROUTE SR#510

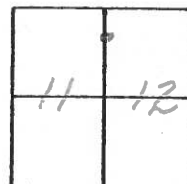
COUNTY SANDUSKY

TOWNSHIP GREEN CREEK

SECTION 11 & 12

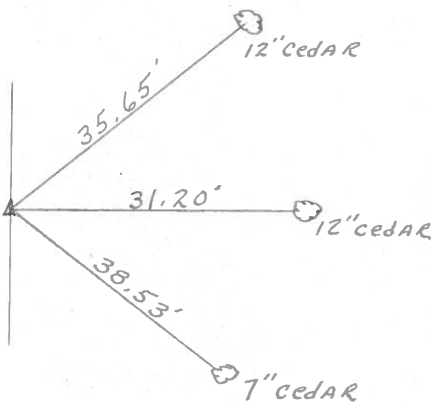
T 4 N R 16 E

TYPE MONUMENT SET P.K. & WASHER
 ON SURFACE - BELOW A Top P.K. & WASHER @ Top R.R. spike
 LEFT - ℄ PAV'T. - RIGHT 1" LT. & PAV'T.
 _____ TO _____ EDGE PAVEMENT
 S.L.M. _____



71+42.57

℄ R/W SR#510



County Sandusky S.R. # 510

Township Green Creek

Section 11, E 12

T 4 N, R 16 E

Personnel Cronin

Ripple

Geyman

Mosser

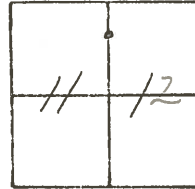
Barbour

#4

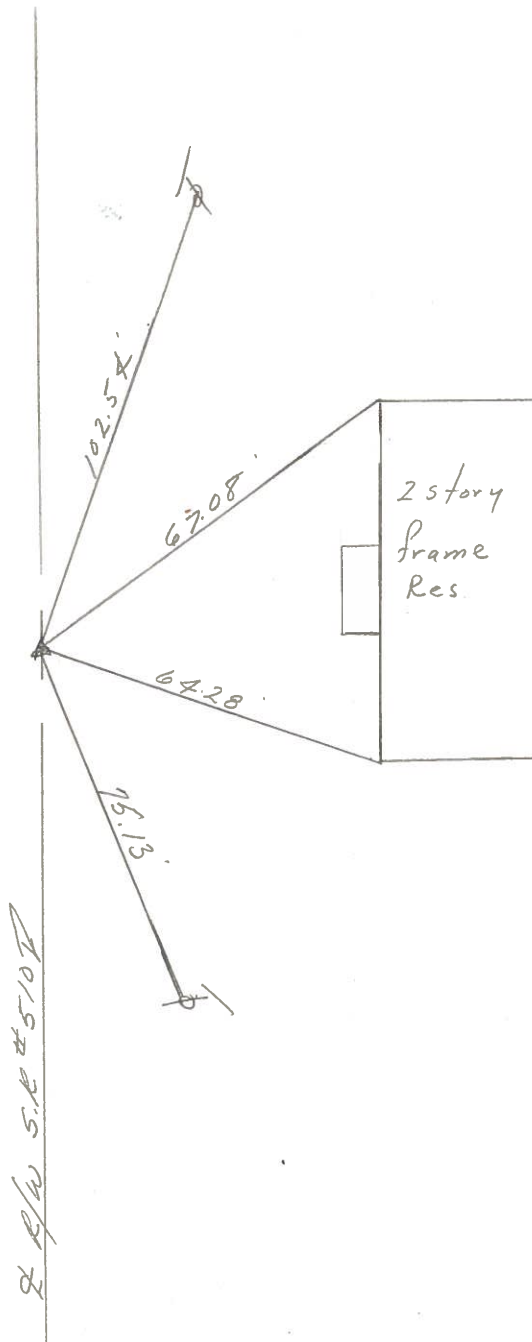
Date 9/9/82

Weather sunny

Temp. 75°



71+42.57
set P.K. & washer at top P.K.
& washer at top R.R. spike
1 ± Lt. & pavement



PERSONNEL TITLE PERSONNEL TITLE

Schneider

Mosser

Barbour

Geyman

COUNTY Sandusky

DATE

S. R. 510

WEATHER

Fair

SEC. US. 20 to US. 6

TEMP.

50°

DESCRIPTION

Ties for control points

JOB NO.

LEFT

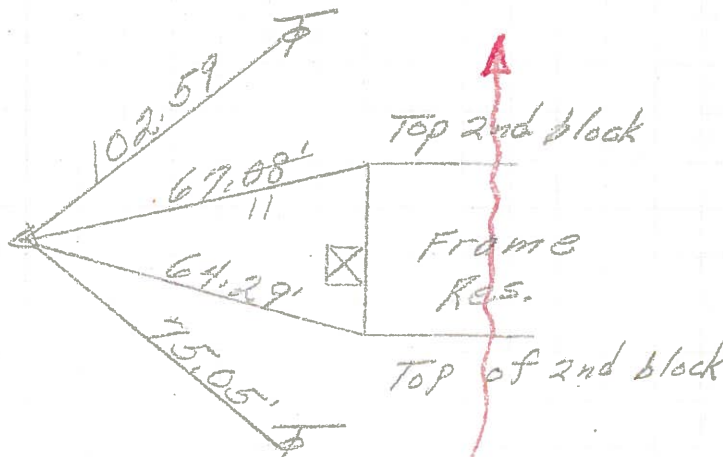
CENTER LINE

RIGHT

Reset P.K. Nails
8-21-72

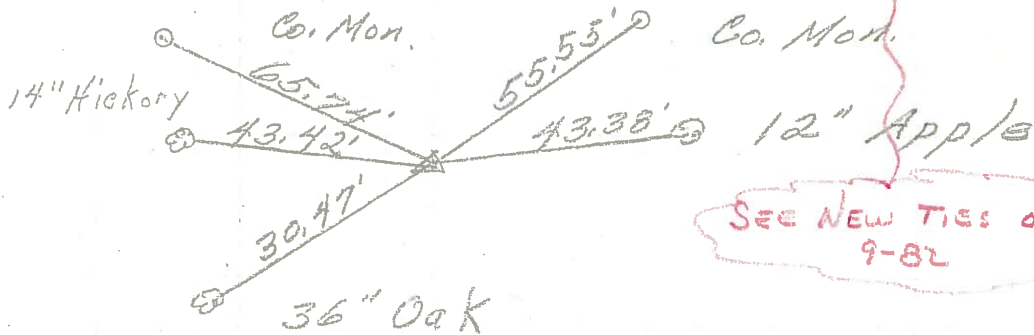
④

71+42.57
R.R. spk.
2" down



③

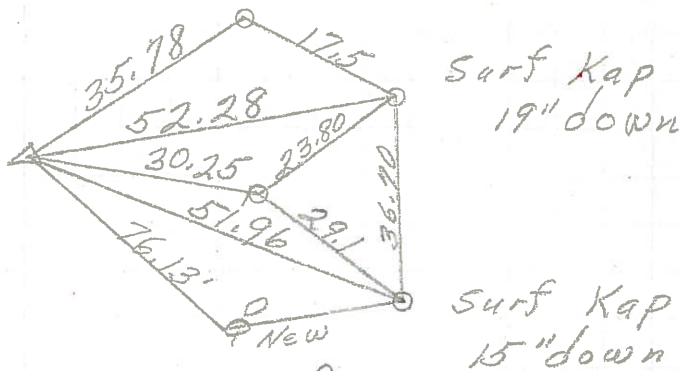
53+43
Fd. R.R. spk.
3' Rt. of \perp



SEE NEW TIES OF 9-82

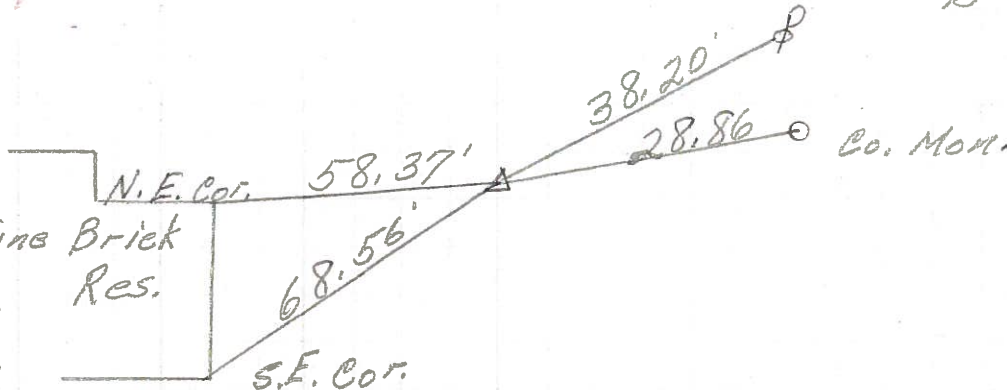
②

R.R. spk.
center sec 11 & 12
4" Rt. of \perp



①

P.I.
26+73
North Corp. Line Brick
Clyde Res.
3/4" Iron Rod
1' Left of \perp
1" down

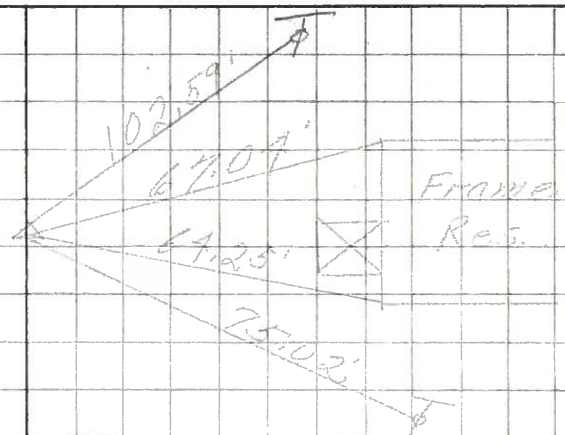


PERSONNEL TITLE PERSONNEL TITLE COUNTY Sandusky DATE 4-22-68
 Mosser _____ S. R. 510 WEATHER Fair
 Barbour _____ SEC. N. Corp. Clyde to US #6 TEMP. 60°
 Redding _____
 DESCRIPTION Ties for control points LEFT CENTER LINE RIGHT JOB NO.

④

7/4 42.57
R.R. sok. 2" down

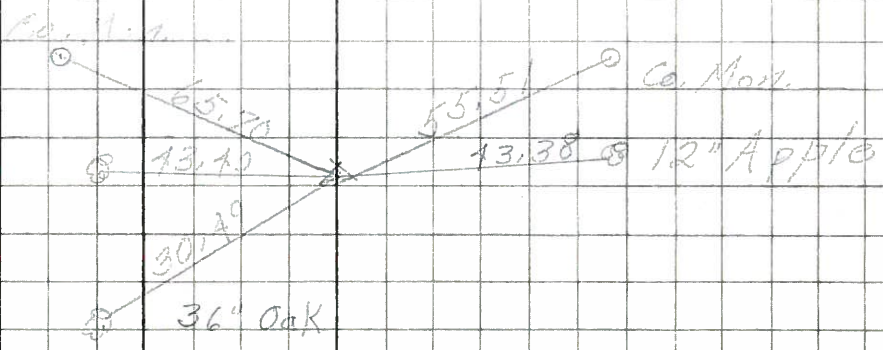
7503



③

Fd. P.R. sok
3' Rt. of &

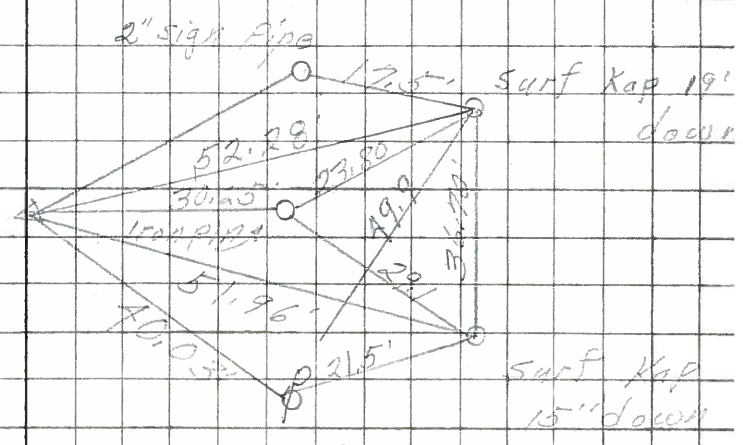
7502



②

R.R. sok
Center sec 11 & 12
3' Rt. of &

7501



①

P.I.
26+73 Approx.
North Corp. line Clyde
3/4" Iron Rod 1' left of &

7500

(Brick House)

