

O.D.O.T. DISTRICT 2 SURVEY OFFICE (USE ONLY)

PERSONNEL

REFERENCE NO. 5

SHEET 5 OF 17

NOTES GARRETT

DATE 7/23/20

ROUTE SR 510

H.C. RHOADES

WEATHER CLOUDY

COUNTY SANDUSKY

R.C. MAHLER

TEMP. 77°

TOWNSHIP GREEN CREEK

SECTION 2

DWG BY RHOADES

PID PAVE TRAIN

T 4 N R 16 E

TYPE MONUMENT MAG NAIL

ON SURFACE - ~~BELOW~~ ON

OFFSET \varnothing PAVEMENT 2.5' ~~LT~~ : RT

- TO - EDGE PAVEMENT

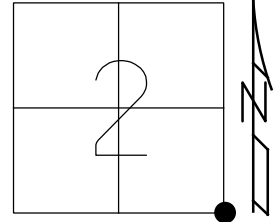
STATION: 80+24

HORIZ.DATUM: NAD83 2011

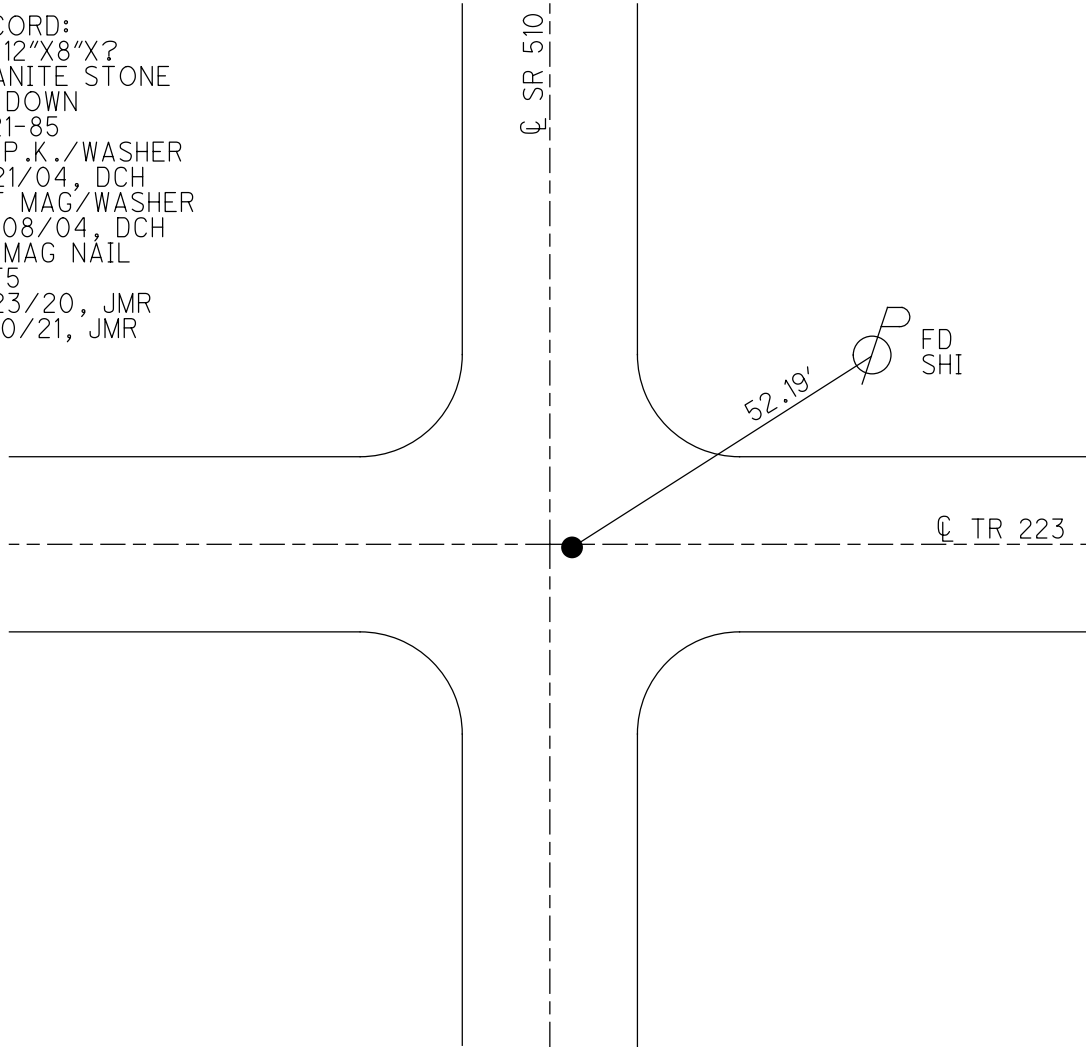
GEOID: NAVD88 2012A

GRID: NORTHING: 605889.595

EASTING: 1838109.472



RECORD:
FD 12"X8"X?
GRANITE STONE
21" DOWN
5-21-85
FD P.K./WASHER
6/21/04, DCH
SET MAG/WASHER
10/08/04, DCH
FD MAG NAIL
REF5
7/23/20, JMR
3/10/21, JMR



O.D.O.T. DISTRICT 2 SURVEY OFFICE (USE ONLY)

PERSONNEL _____

REFERENCE NO. 5

SHEET 5 OF 17

NOTES HOMAN

DATE 6/21/04

ROUTE SR 510

H.C. HOMAN

WEATHER SUNNY

COUNTY SANDUSKY

R.C. ADKINS

TEMP. 65°

TOWNSHIP GREEN CREEK

SECTION 2

DWG BY _____ PID _____

T 4 N R 16 E

TYPE MONUMENT P.K./WASHER

ON SURFACE - ~~BELOW~~ ON _____

OFFSET \odot PAVEMENT 2.5' ~~LT~~ : RT

- TO - EDGE PAVEMENT

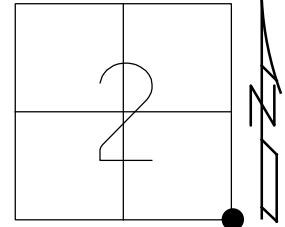
STATION: 80+24

HORZ. DATUM: _____

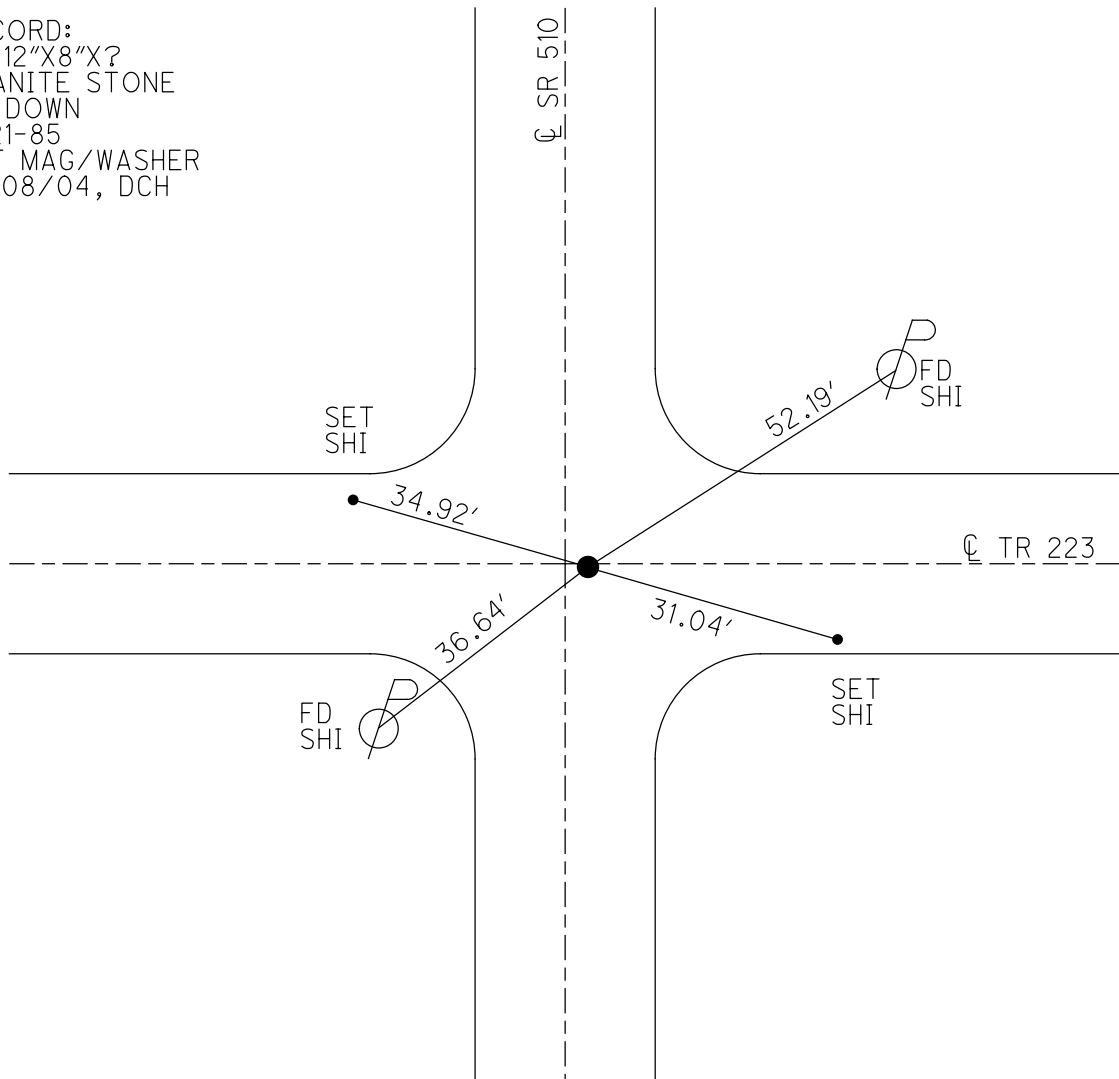
GEOID: _____

GRID: NORTHING: _____

EASTING: _____



RECORD:
FD 12"X8"X?
GRANITE STONE
21" DOWN
5-21-85
SET MAG/WASHER
10/08/04, DCH



O.D.O.T. DISTRICT 2 SURVEY OFFICE

PERSONNEL _____

REFERENCE NO. 5

SHEET 5 OF 17

NOTES HOMAN _____

DATE 6-21-04

ROUTE SR 510

H.C. HOMAN _____

WEATHER SUNNY

COUNTY SANDUSKY

R.C. ADKINS _____

TEMP. +75°

TOWNSHIP GREEN CREEK

SECTION 1-2-11-12

T 4 N R 16 E

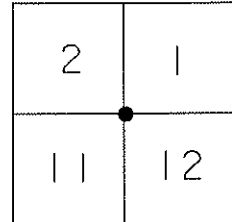
TYPE MONUMENT P.K. & WASHER

ON SURFACE - ~~BELOW~~ _____ YES

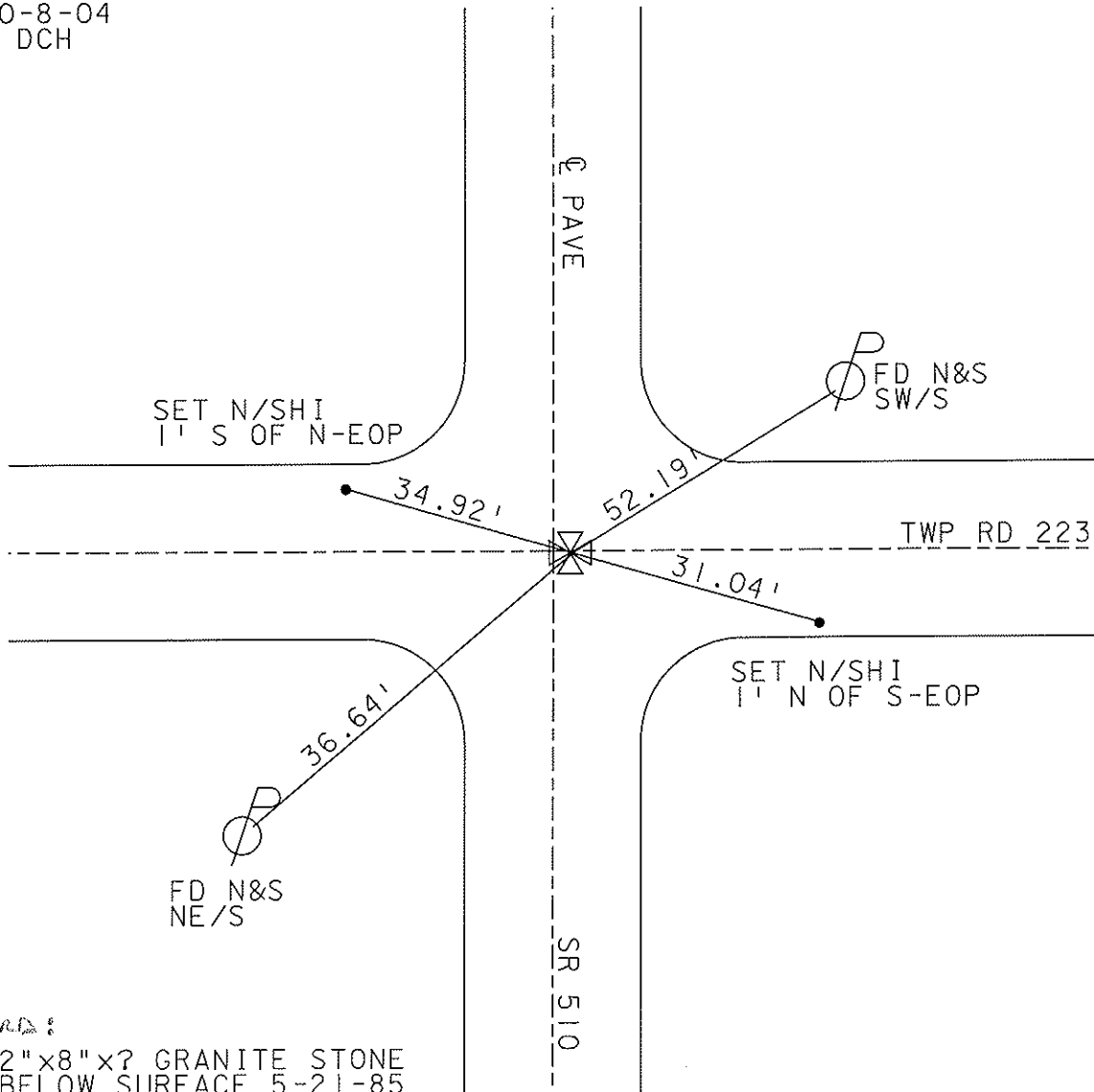
~~LEFT - C PAVE~~ - RIGHT 2.5' RT

_____ TO _____ EDGE PAVEMENT

S.L.M. _____ 80+24



SET MAG NAIL
10-8-04
DCH



Records:

FD 12"x8"x? GRANITE STONE
21" BELOW SURFACE 5-21-85
X TIES IN ROAD

O.D.O.T. DISTRICT 2 SURVEY OFFICE

PERSONNEL

REFERENCE NO. 5

SHEET 3 OF 15

NOTES Ripple

H.C. BARBOUR

DATE 8/14/90

ROUTE SR.# 510

R.C. Geyman

WEATHER SUNNY

COUNTY SANDUSKY

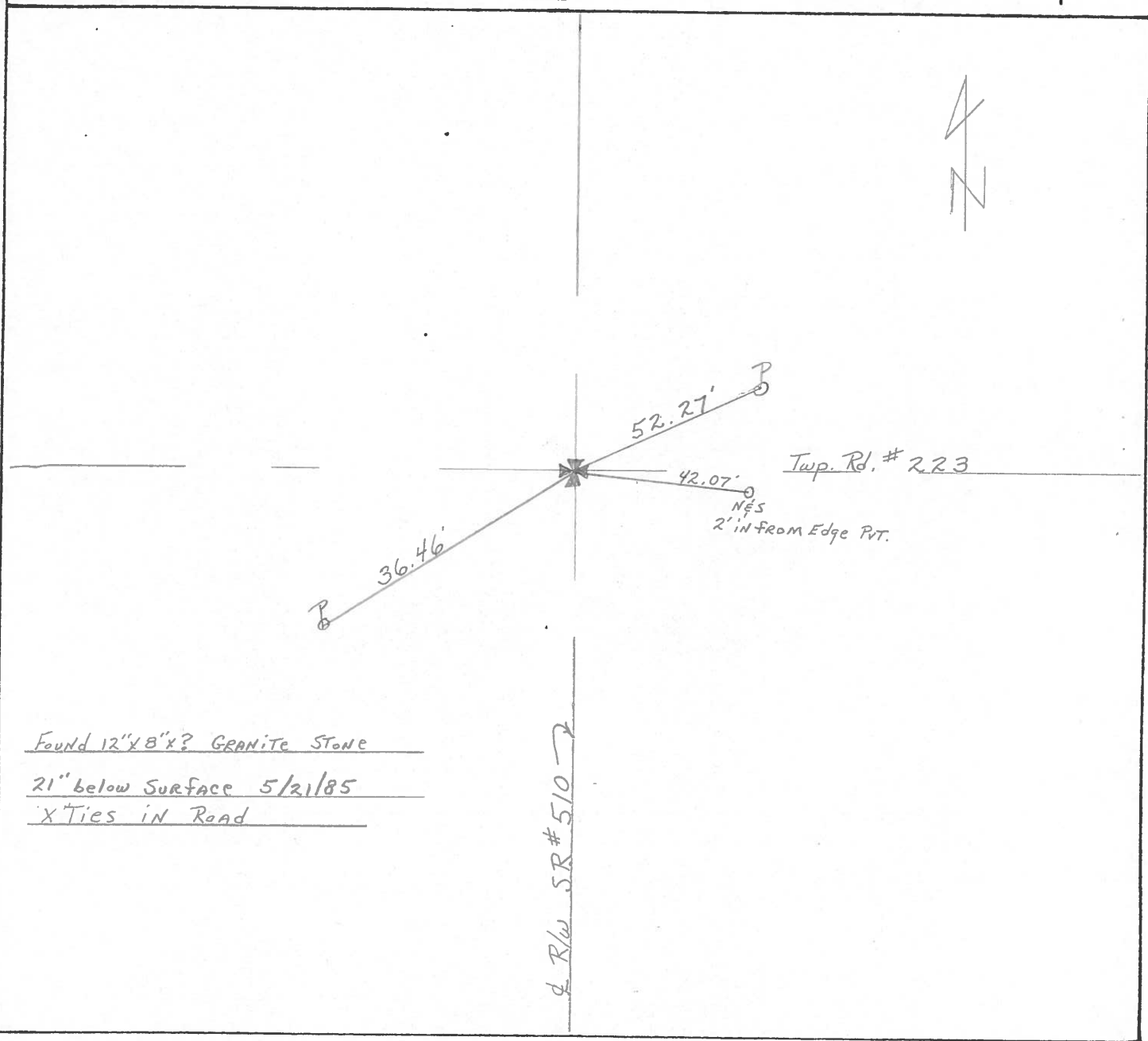
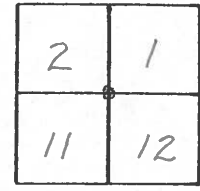
TEMP. 75°

TOWNSHIP Green Creek

SECTION _____

T 4 N R 16 E

TYPE MONUMENT Set PK. & Washer
 ON SURFACE - BELOW 12" x 8" GRANITE Stone
 LEFT- & PAV'T. - RIGHT 2.5' ± RT. & PAV'T.
 _____ TO _____ EDGE PAVEMENT
 S.L.M. _____



Found 12" x 8" x ? GRANITE Stone
21" below Surface 5/21/85
X Ties in Road

R/W SR # 510

O.D.O.T. DISTRICT 2 SURVEY OFFICE

SHEET

OF

5

County Sandusky S.R. #510

Date 9/9/82

Township Green Creek

Weather sunny

Section _____

Temp. 75°

T 4 N, R 16 E

Personnel Cronin

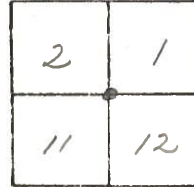
Ripple

Geuman

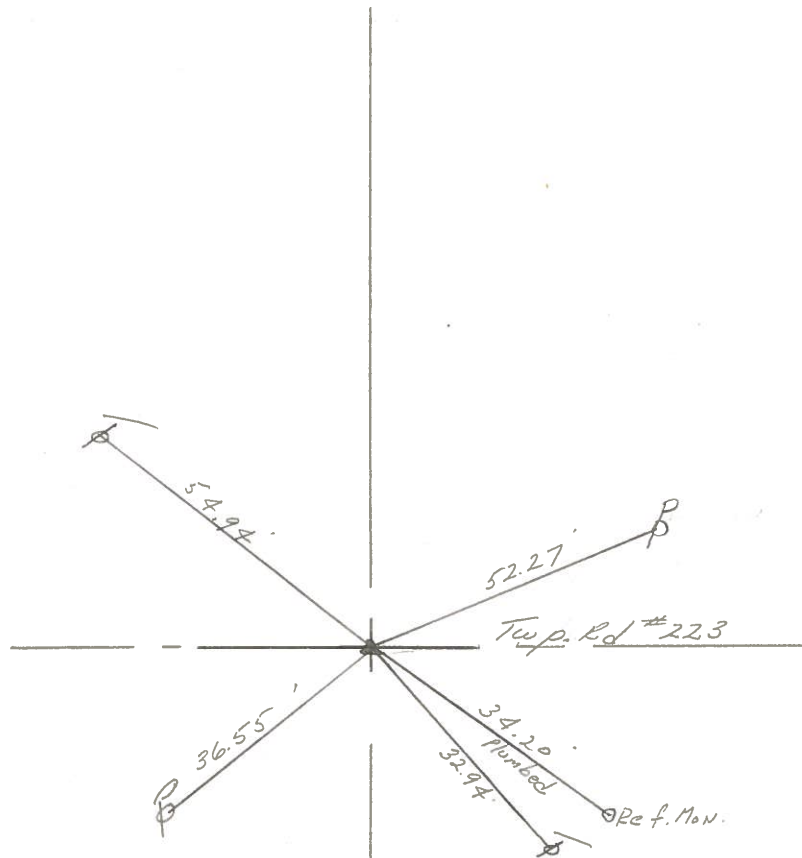
Mosser

Barbour

#5



Fd 1/2" I. rod 7'
below surface. 3" North of
stone - 2.5' Rt. & pavement
should be dug for stone



R/R/W S.R. #5107

PERSONNEL TITLE PERSONNEL TITLE

COUNTY Sandusky DATE 8-21-72
4-14-71

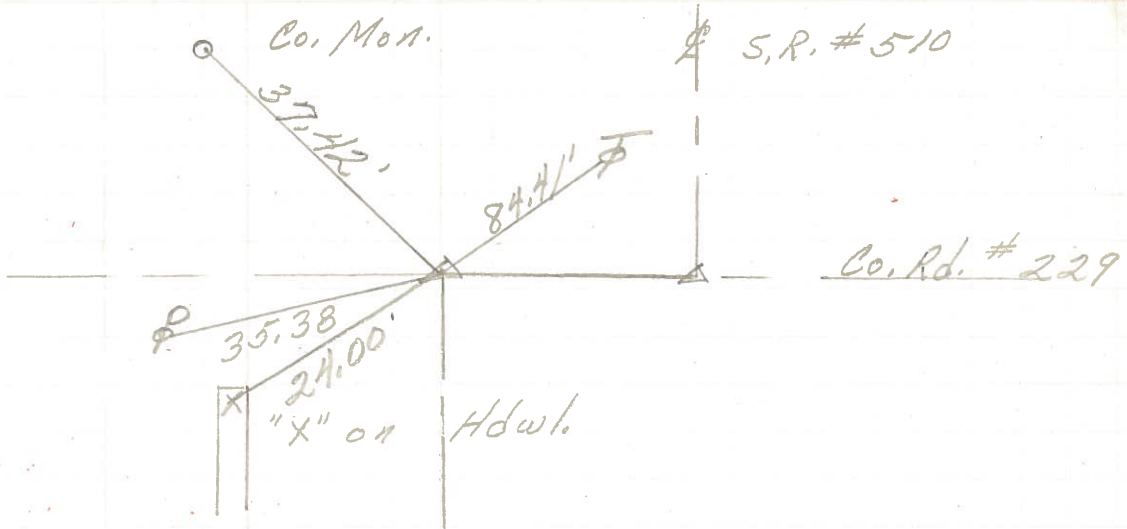
S. R. 510 WEATHER Fair

SEC. US. 20 to US. 6 TEMP. 32°

DESCRIPTION LEFT CENTER LINE RIGHT JOB NO.

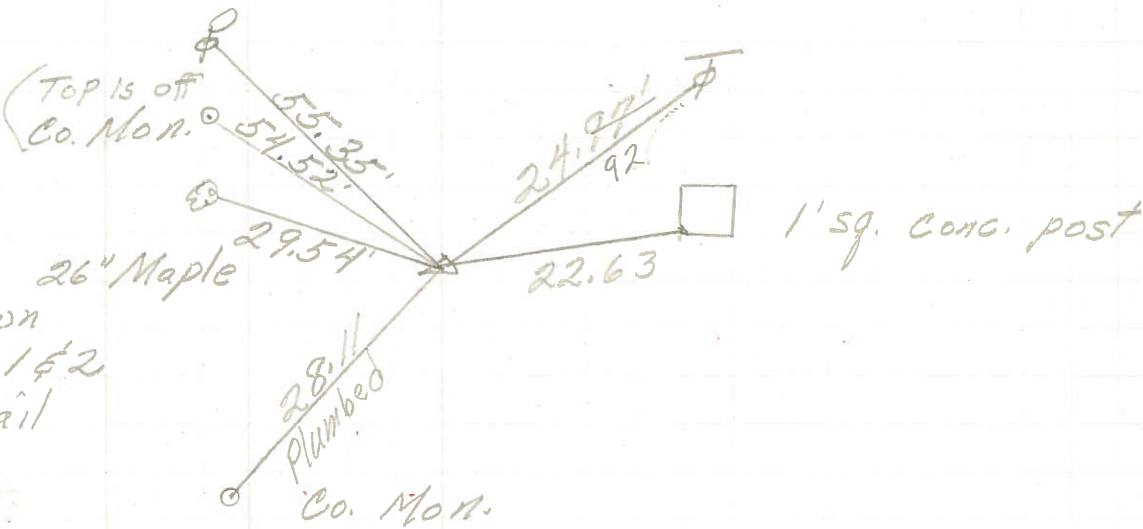
①

Iron pipe
over stone



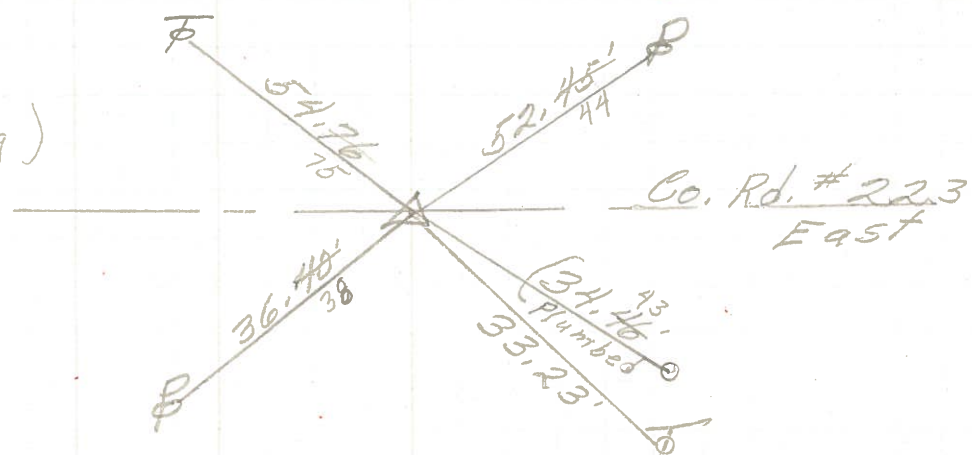
②

106+34
Bolt over
stone 2" down
center sec 1 & 2
Reset P.K. Nail



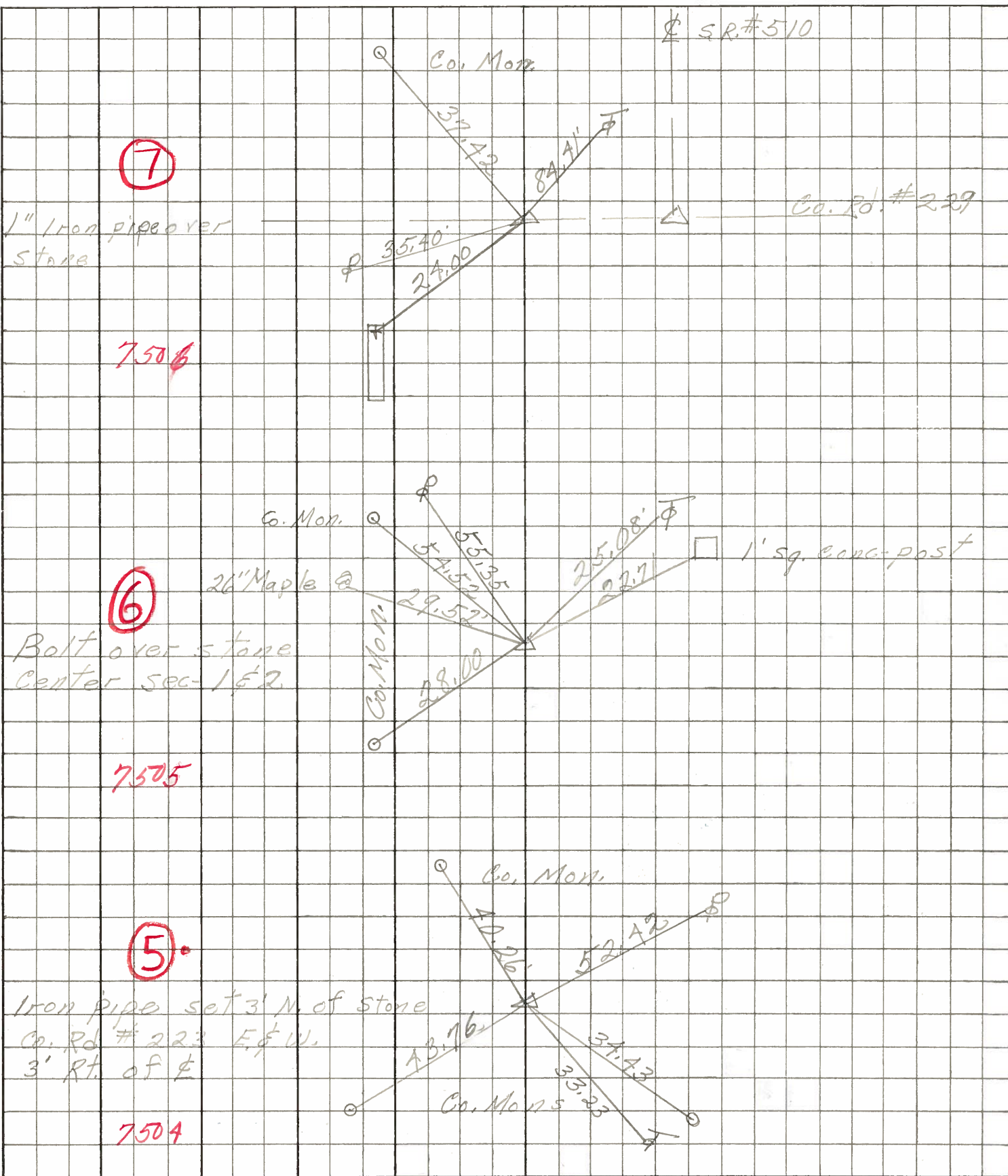
③

79+
sq. Bolt (Reidug)
Iron Pin
3' N. of stone
1" down
2 1/2' Rt. of ϕ



PERSONNEL	TITLE	PERSONNEL	TITLE	COUNTY	DATE	S. R.	WEATHER	SEC. U.S. #	TEMP.
Schneider		Potts		Sandusky	4-22-68	510	Fair	#20 to 6	65°
Mosser									
Barbour									
Redding									

DESCRIPTION Ties for Control Point JOB NO. _____



7

7506

6

7505

5

7504