

O.D.O.T. DISTRICT 2 SURVEY OFFICE (USE ONLY)

PERSONNEL

REFERENCE NO. 6

SHEET 6 OF 17

NOTES GARRETT

DATE 7/23/20

ROUTE SR 510

H.C. RHOADES

WEATHER CLOUDY

COUNTY SANDUSKY

R.C. MAHLER

TEMP. 77°

TOWNSHIP GREEN CREEK

SECTION 2

DWG BY RHOADES

PID PAVE TRAIN

T 4 N R 16 E

TYPE MONUMENT MAG SHANK

ON SURFACE - ~~BELOW~~ ON

OFFSET Q PAVEMENT ON LT : RT

- TO - EDGE PAVEMENT

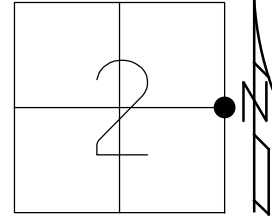
STATION: 106+69

HORIZ.DATUM: NAD83 2011

GEOID: NAVD88 2012A

GRID: NORTHING: 608531.215

EASTING: 1838136.256



RECORD:

STA. 106+34

FD P.K./WASHER

ATOP BOLT SPIKE

ATOP STONE

1971

FD P.K./WASHER

6/21/04, DCH

SET MAG/WASHER

9/03/04, DCH

FD MAG SHANK

REF6

7/23/20, JMR

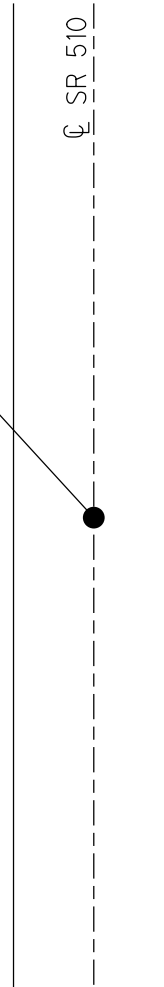
3/10/21, JMR

FD
SHI



55.26'

Q SR 510



O.D.O.T. DISTRICT 2 SURVEY OFFICE (USE ONLY)

PERSONNEL

REFERENCE NO. 6

SHEET 6 OF 17

NOTES HOMAN DATE 6/21/04

H.C. HOMAN WEATHER SUNNY

R.C. ADKINS TEMP. 75°

ROUTE SR 510

COUNTY SANDUSKY

TOWNSHIP GREEN CREEK

SECTION 2

DWG BY _____ PID _____

T 4 N R 16 E

TYPE MONUMENT P.K./WASHER

ON SURFACE - ~~BELOW~~ ON

OFFSET C PAVEMENT ON _____ LT : RT

- TO - EDGE PAVEMENT

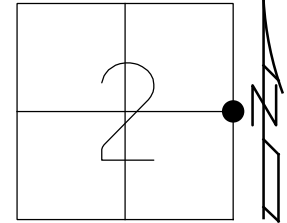
STATION: 106+69

HORZ.DATUM: _____

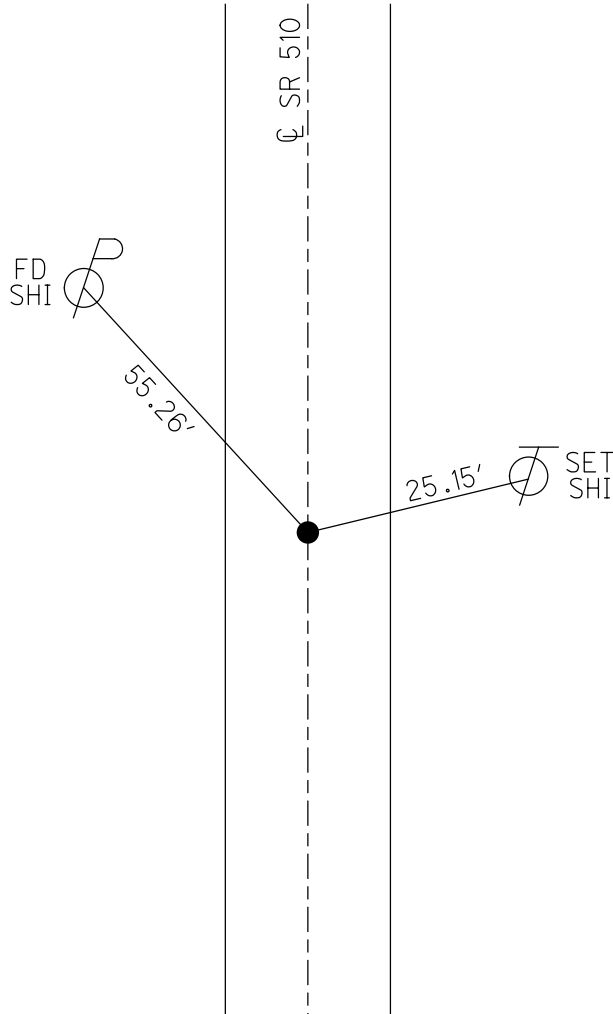
GEOID: _____

GRID: NORTHING: _____

EASTING: _____



RECORD:
STA. 106+34
FD P.K./WASHER
ATOP BOLT SPIKE
ATOP STONE
1971
SET MAG/WASHER
9/03/04, DCH



O.D.O.T. DISTRICT 2 SURVEY OFFICE

PERSONNEL _____

REFERENCE NO. 6

SHEET 6 OF 17

NOTES HOMAN _____

DATE 6-21-04

ROUTE SR 510

H.C. HOMAN _____

WEATHER SUNNY

COUNTY SANDUSKY

R.C. ADKINS _____

TEMP. +75°

TOWNSHIP GREEN CREEK

SECTION 1 & 2

T. 4 N R. 16 E

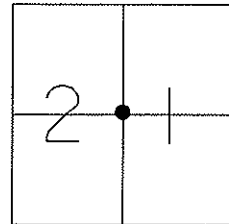
TYPE MONUMENT P.K. & WASHER

ON SURFACE ~~-BELOW~~ _____ YES _____

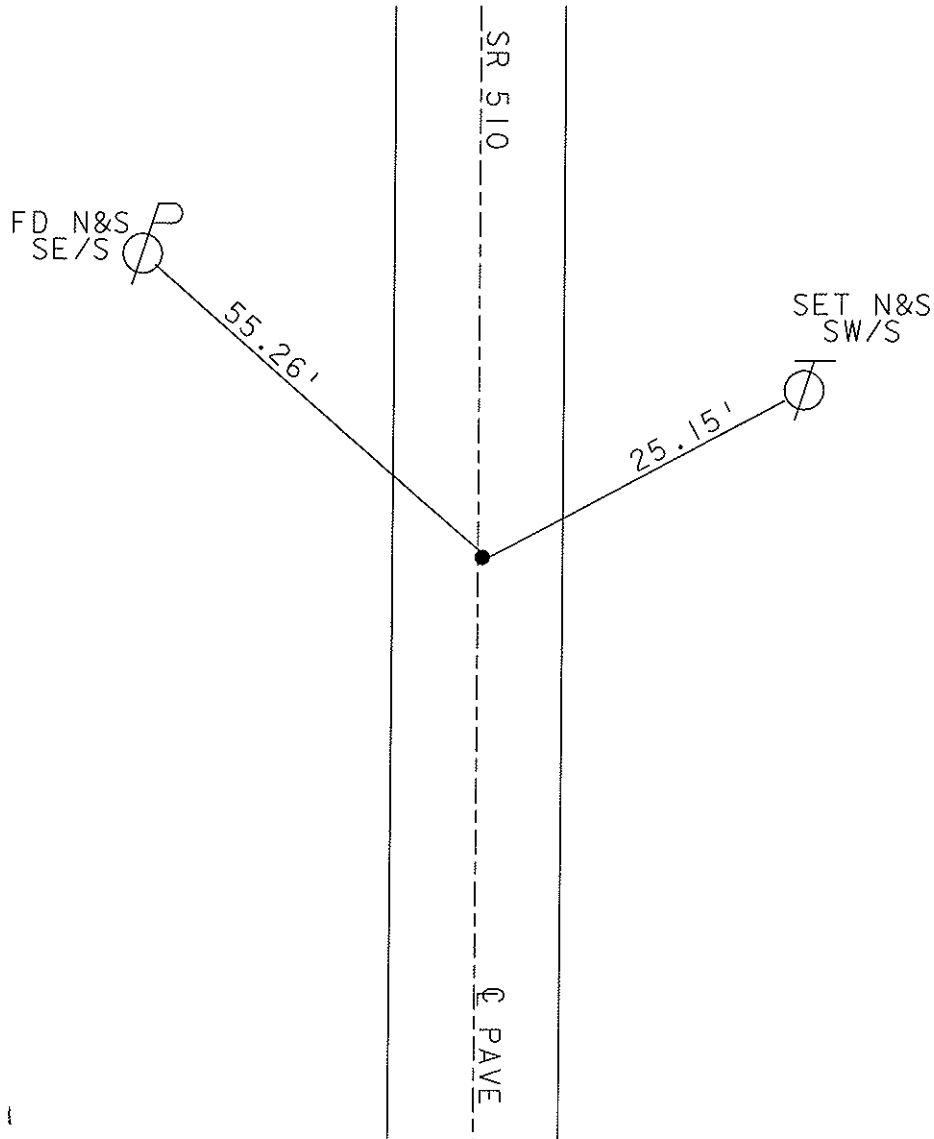
~~LEFT~~ - Q PAV'T - ~~RIGHT~~ _____ YES _____

_____ TO _____ EDGE PAVEMENT

S.L.M. _____ 106+69 _____



SET MAG NAIL
9-3-04
DCH



Recorded - 1971
106+34: P.K./washer, BOLT SET & STAKE

O.D.O.T. DISTRICT 2 SURVEY OFFICE

PERSONNEL

REFERENCE NO. 6

SHEET 4 OF 15

NOTES Ripple

H.C. BARBOUR

R.C. Geyman

DATE 8/14/90

WEATHER SUNNY

TEMP. 75°

ROUTE S.R. #510

COUNTY SANDUSKY

TOWNSHIP Green Creek

SECTION 1 & 2

T 4 N R 16 E

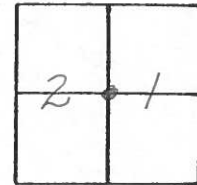
TYPE MONUMENT Set P.K. & Washer

ON SURFACE - BELOW P.K. & Washer ATop Bolt Spike ATop Stone

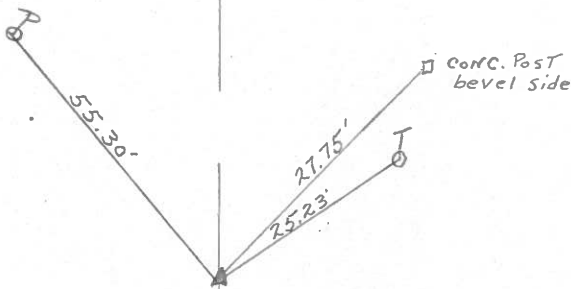
LEFT - ☉ PAV'T. - RIGHT ☉ ±

TO EDGE PAVEMENT

S.L.M.



106+34



☉ R/W SR. #510 ☉

②

County Sandusky S.R. # 510

Date 9/9/82

Township Green Creek

Weather sunny

Section 1 & 2

Temp. 75°

T 4 N, R 16 E

Personnel Cronin

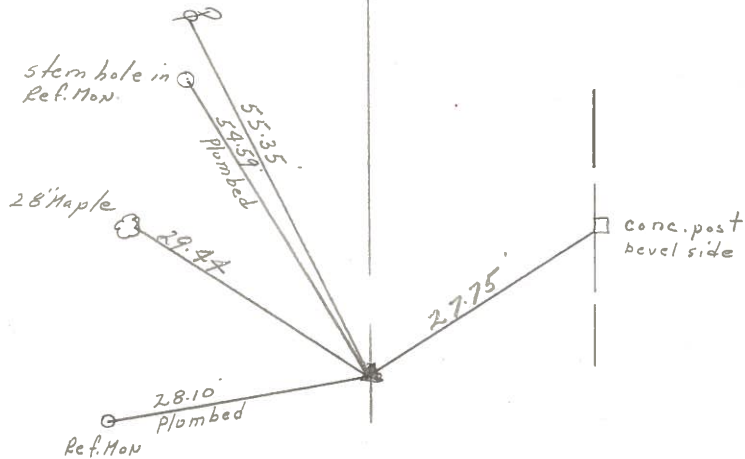
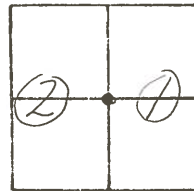
Ripple

Geyman

Mosser

Barbour

#6



106434
Set P.K. & washer at top P.K. &
washer at top bolt at top stone

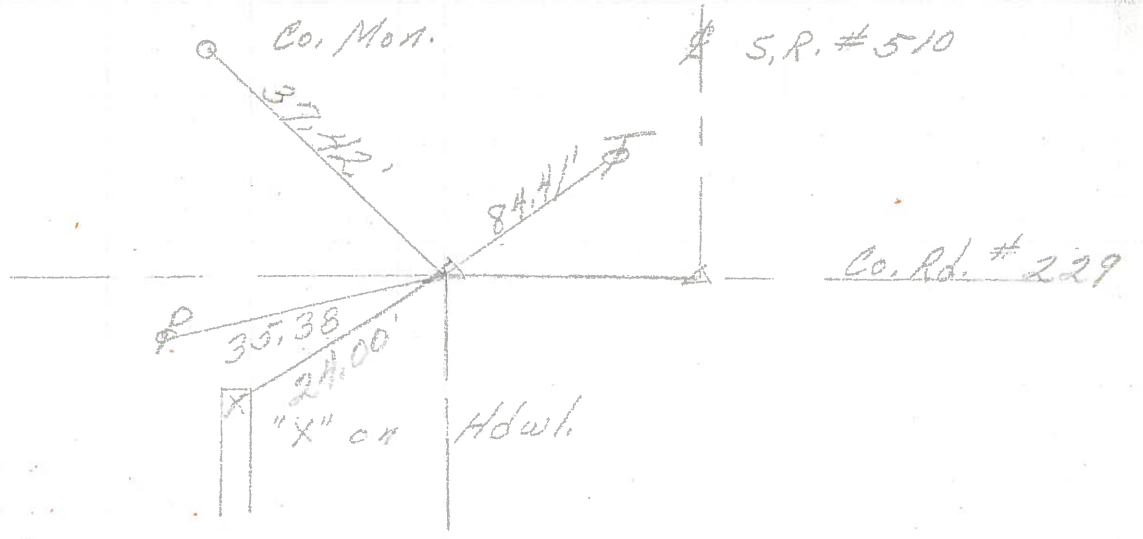
R.R.W. S.R. # 510 E

PERSONNEL	TITLE	PERSONNEL	TITLE
COUNTY <u>Sandusky</u>		DATE <u>8-21-72</u> <u>4-14-71</u>	
S. R. <u>510</u>		WEATHER <u>Fair</u>	
SEC. <u>U.S. 20 to U.S. 6</u>		TEMP. <u>32°</u>	

DESCRIPTION	LEFT	CENTER LINE	RIGHT	JOB NO.
-------------	------	-------------	-------	---------

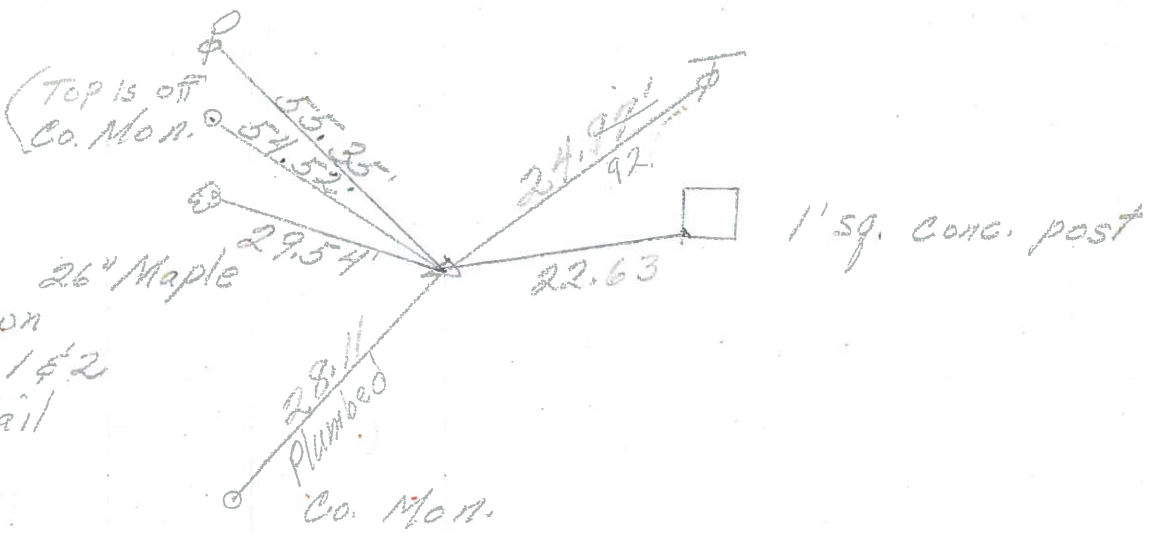
(1)

Iron pipe over stone



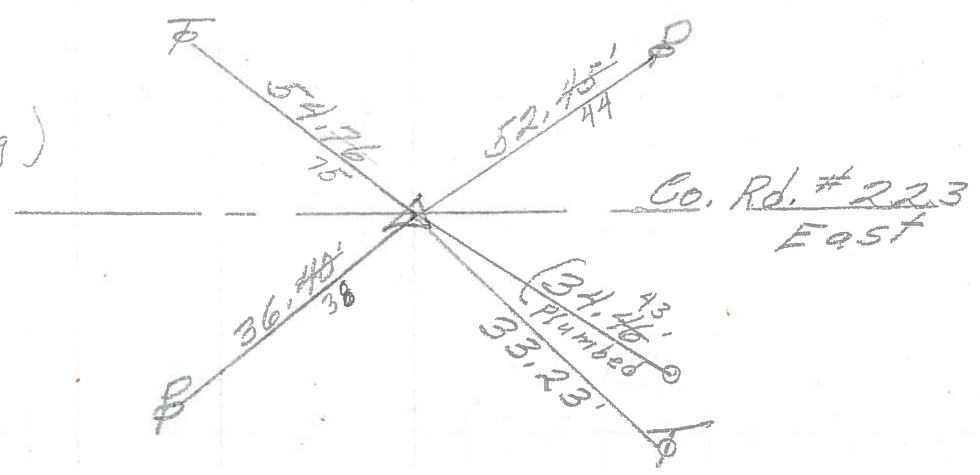
(6)

106+34
Bolt over 26" Maple
Stone 2" down
Center sec 1 & 2
Reset P.K. Nail



(5)

79+
sq. Bolt (Redug)
Iron Pin
3' N. of stone
1" down
2 1/2' Rt. of &



PERSONNEL	TITLE	PERSONNEL	TITLE	COUNTY	DATE
Schneider		Potts		Sandusky	12
Mosser				S. R.	510
Barbour				WEATHER	
Redding				SEC. U.S. #20 to	TEMP.
DESCRIPTION	Ties for Control Points			JOB NO.	

