

O.D.O.T. DISTRICT 2 SURVEY OFFICE (USE ONLY)

PERSONNEL

REFERENCE NO. 7

SHEET 7 OF 17

NOTES GARRETT

DATE 7/23/20

ROUTE SR 510

H.C. RHOADES

WEATHER CLOUDY

COUNTY SANDUSKY

R.C. MAHLER

TEMP. 77°

TOWNSHIP GREEN CREEK

SECTION 2

DWG BY RHOADES

PID PAVE TRAIN

T 4 N R 16 E

TYPE MONUMENT MONBOX

ON SURFACE - ~~BELOW~~ ON

OFFSET CL PAVEMENT 35' LT : ~~RT~~

- TO - EDGE PAVEMENT

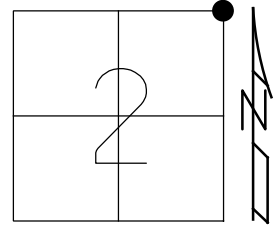
STATION: 132+52

HORZ.DATUM: NAD83 2011

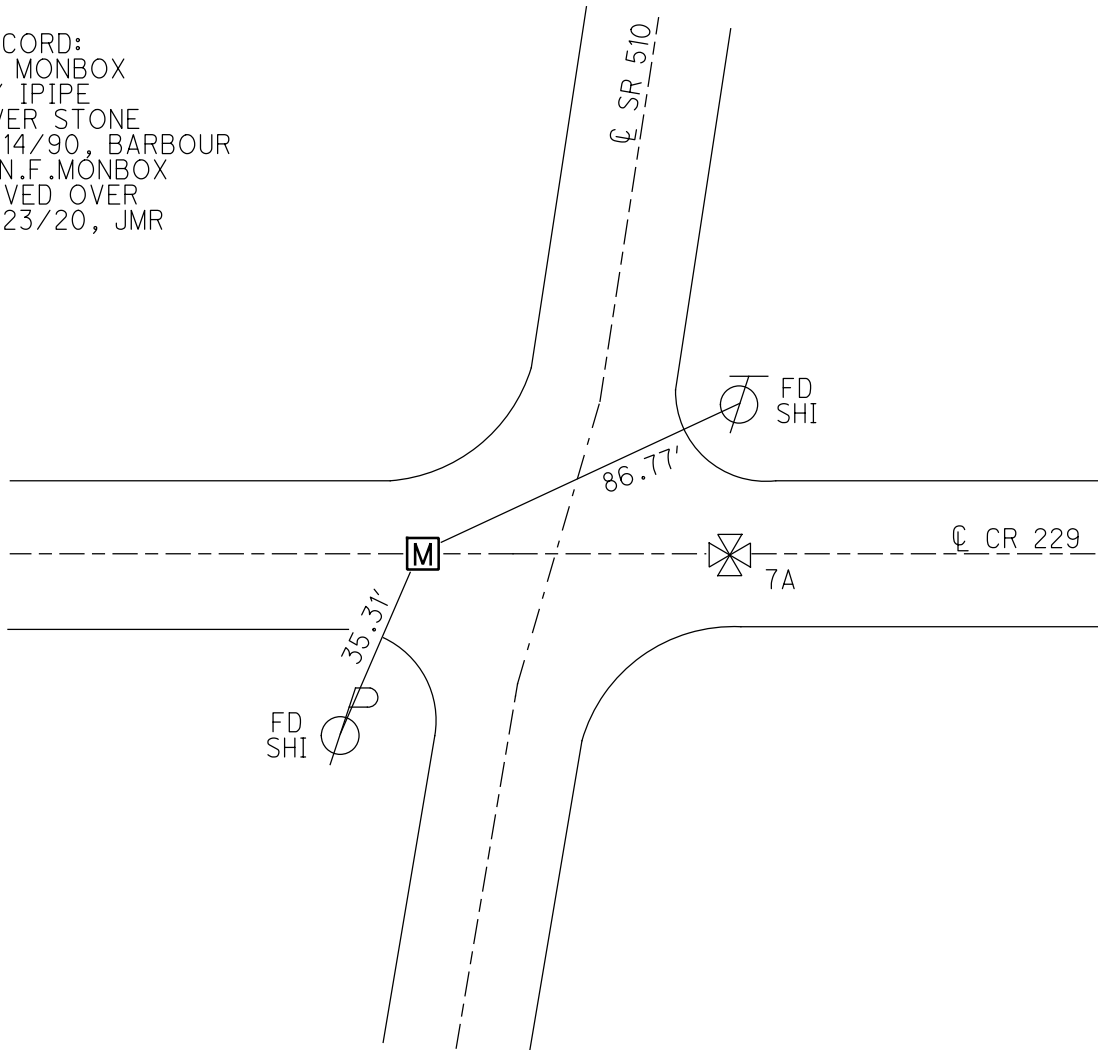
GEOID: NAVD88 2012A

GRID: NORTHING: _____

EASTING: _____



RECORD:
 FD MONBOX
 W/ IPIPE
 OVER STONE
 8/14/90, BARBOUR
 D.N.F. MONBOX
 PAVED OVER
 7/23/20, JMR



O.D.O.T. DISTRICT 2 SURVEY OFFICE (USE ONLY)

PERSONNEL _____

REFERENCE NO. 7

SHEET 7 OF 17

NOTES RIPPLE

DATE 8/14/90

ROUTE SR 510

H.C. BARBOUR

WEATHER SUNNY

COUNTY SANDUSKY

R.C. GEYMAN

TEMP. 75°

TOWNSHIP GREEN CREEK

SECTION 2

DWG BY _____ PID _____

T 4 N R 16 E

TYPE MONUMENT MONBOX

ON SURFACE - ~~BELOW~~ ON

OFFSET Q PAVEMENT 35' LT : ~~RT~~

- TO - EDGE PAVEMENT

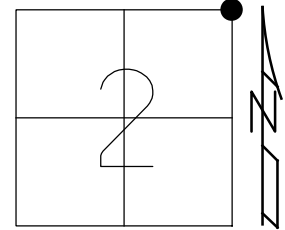
STATION: 132+52±

HORIZ.DATUM: _____

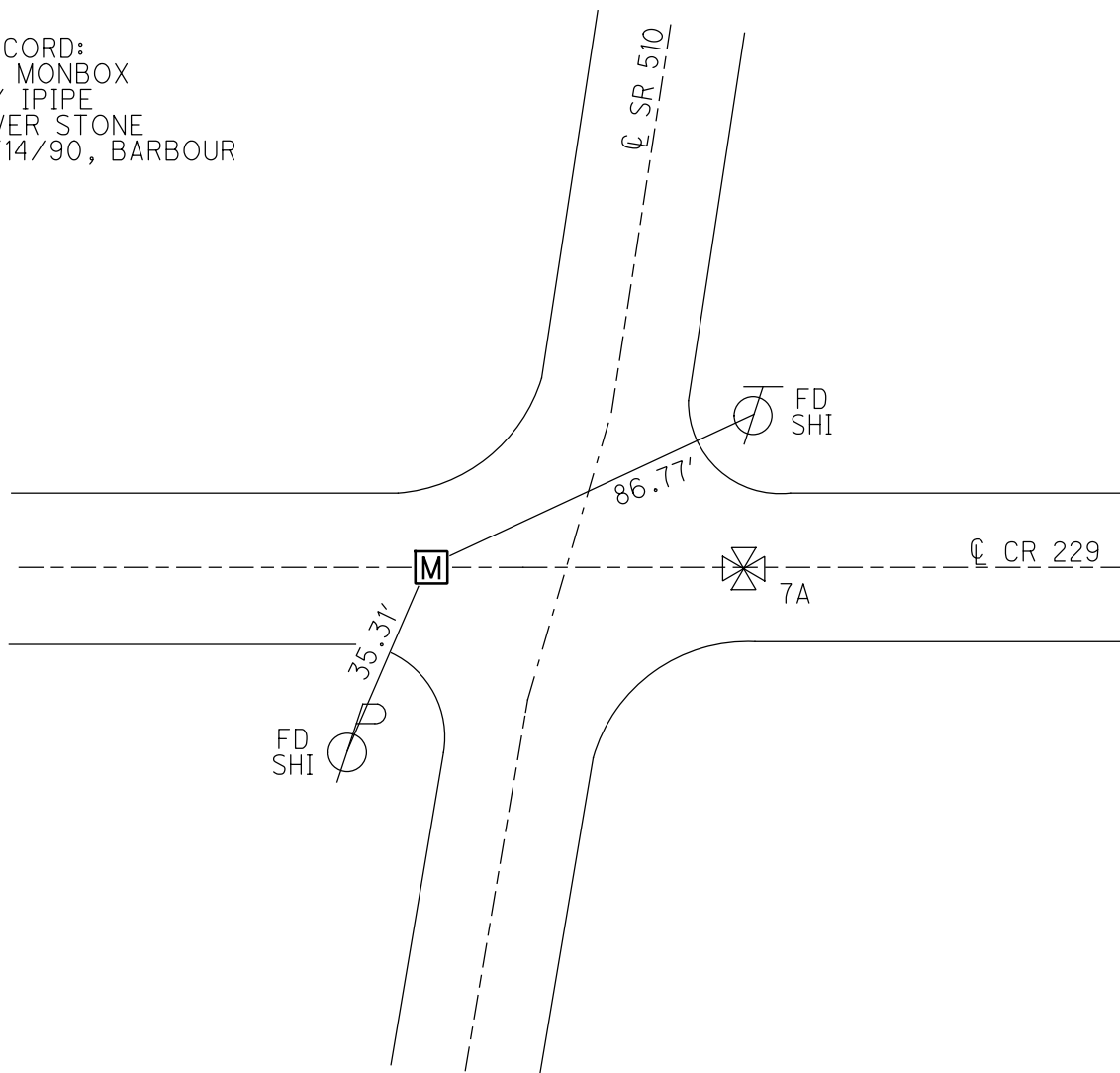
GEOID: _____

GRID: NORTHING: _____

EASTING: _____



RECORD:
FD MONBOX
W/ IPIPE
OVER STONE
8/14/90, BARBOUR



O.D.O.T. DISTRICT 2 SURVEY OFFICE

PERSONNEL

REFERENCE NO. 7

SHEET 7 OF 17

NOTES RIPPLE

DATE 8-14-90

ROUTE SR 510

H.C. BARBOUR

WEATHER SUNNY

COUNTY SANDUSKY

R.C. GEYMAN

TEMP. 75°

TOWNSHIP GREEN CREEK

SECTION 1 & 2

T 1 N R 2 E

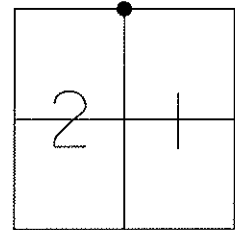
TYPE MONUMENT MON BOX

ON SURFACE - BELOW STONE

LEFT - ~~C PAVT~~ - RIGHT 35' LT

TO EDGE PAVEMENT

S.L.M. _____



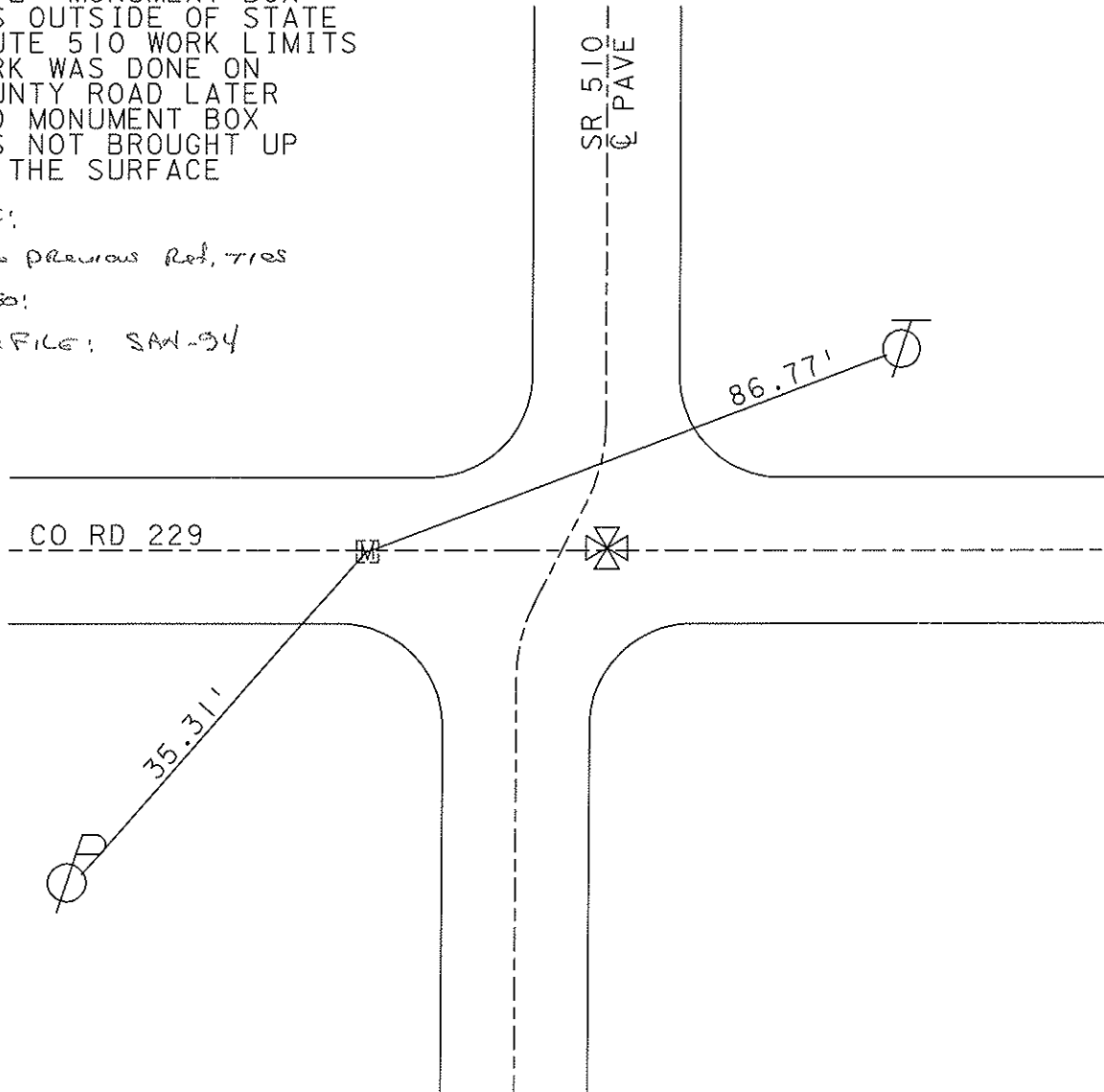
NOTE: MONUMENT BOX
WAS OUTSIDE OF STATE
ROUTE 510 WORK LIMITS
WORK WAS DONE ON
COUNTY ROAD LATER
AND MONUMENT BOX
WAS NOT BROUGHT UP
TO THE SURFACE

Note:

See previous Ref, 7105

Also:

See FILE: SAN-94



O.D.O.T. DISTRICT 2 SURVEY OFFICE

PERSONNEL

REFERENCE NO. 7

SHEET 5 OF 15

NOTES Ripple

H.C. BARBOUR

DATE 8/14/90

ROUTE SR# 510

R.C. GEYMAN

WEATHER SUNNY

COUNTY SANDUSKY

TEMP. 75°

TOWNSHIP GREEN CREEK

SECTION 1 & 2

T. 4 N. R. 16 E

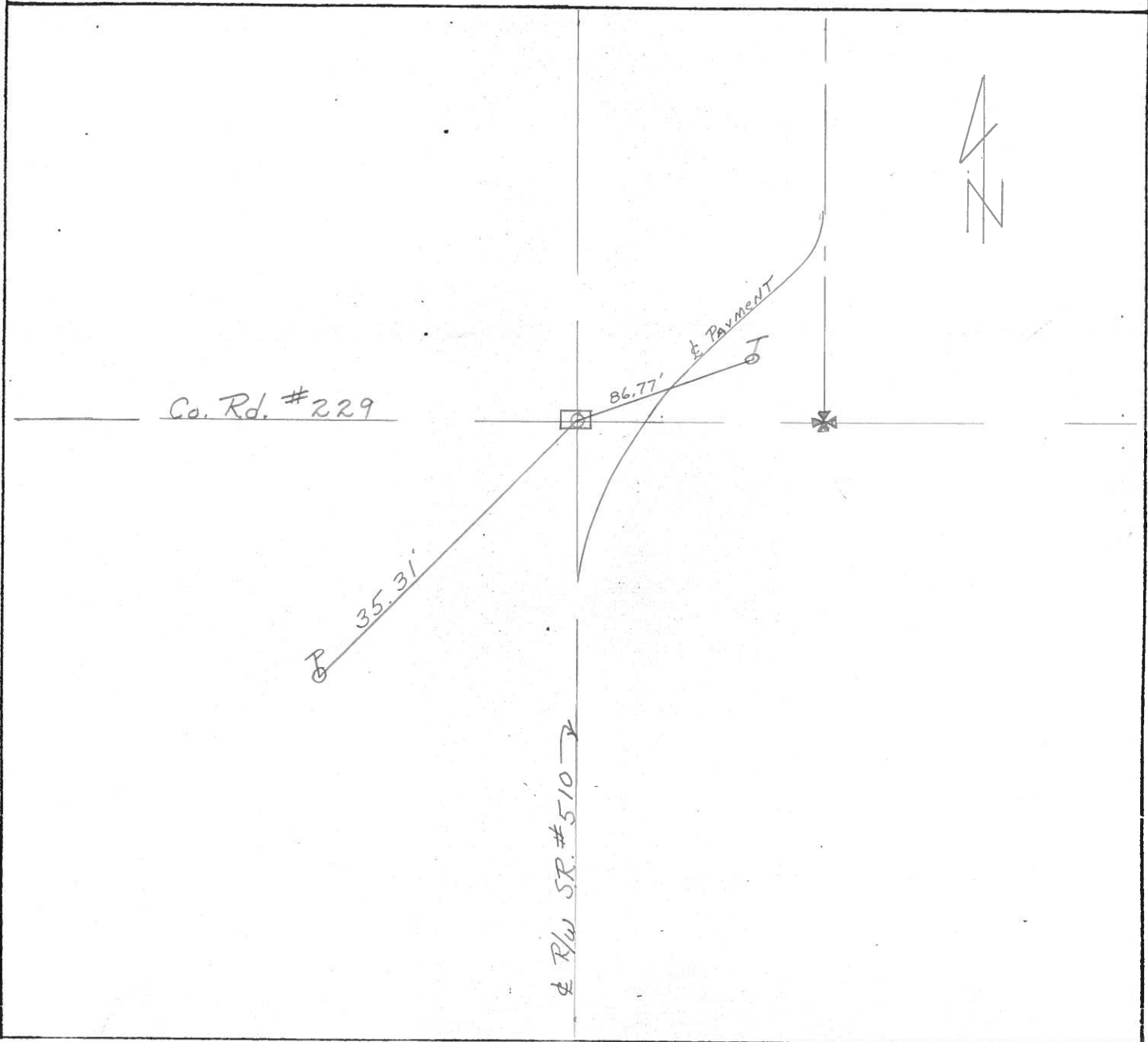
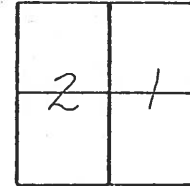
TYPE MONUMENT MONUMENT BOX

ON SURFACE - BELOW STONE

LEFT- & PAV'T. - RIGHT 35' LT. & PAVT.

TO EDGE PAVEMENT

S.L.M. _____



O.D.O.T. DISTRICT 2 SURVEY OFFICE

SHEET

OF

County Sandusky S.R. #510

Township Green Creek

Section 1st 2

T 1 N, R 16 E

Personnel Cronin

Ripple

Geyman

Mosser

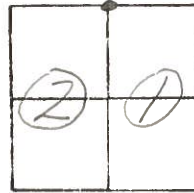
Barbour

#7

Date 7/26/82

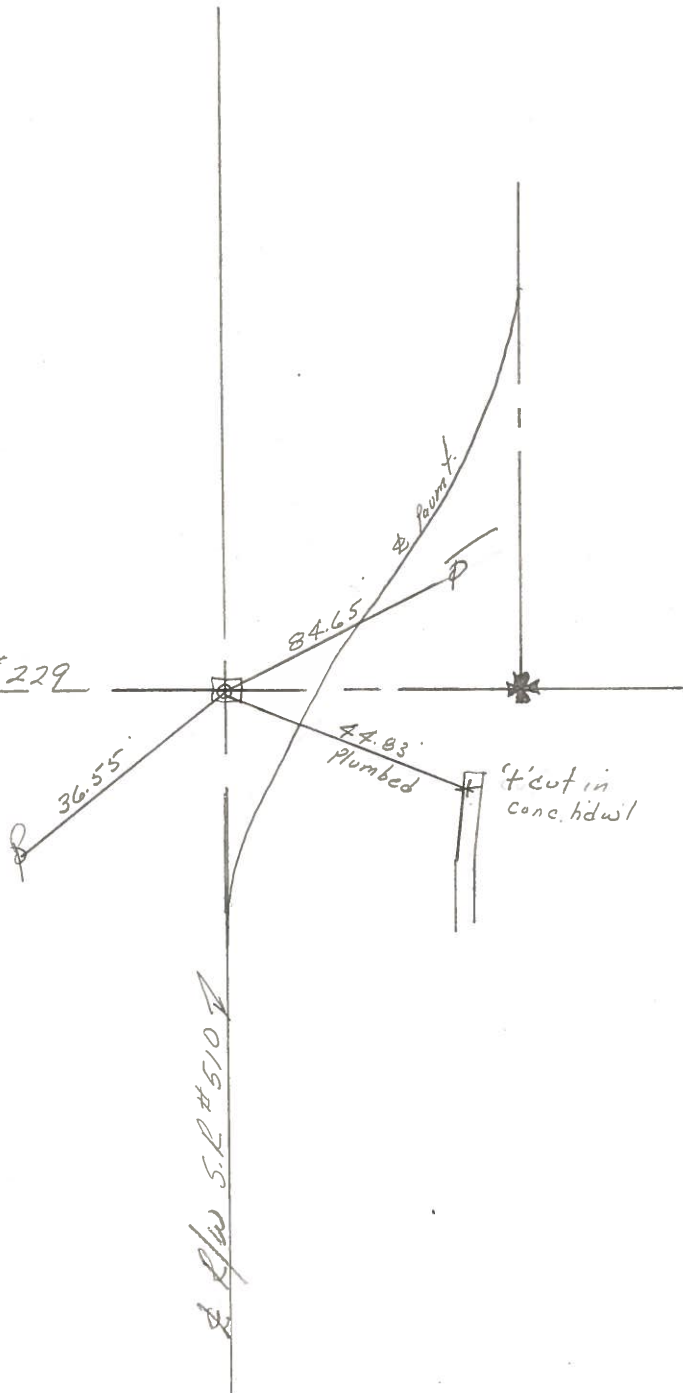
Weather overcast

Temp. 60°



Mon. Bay over stone

Co. Rd. # 229

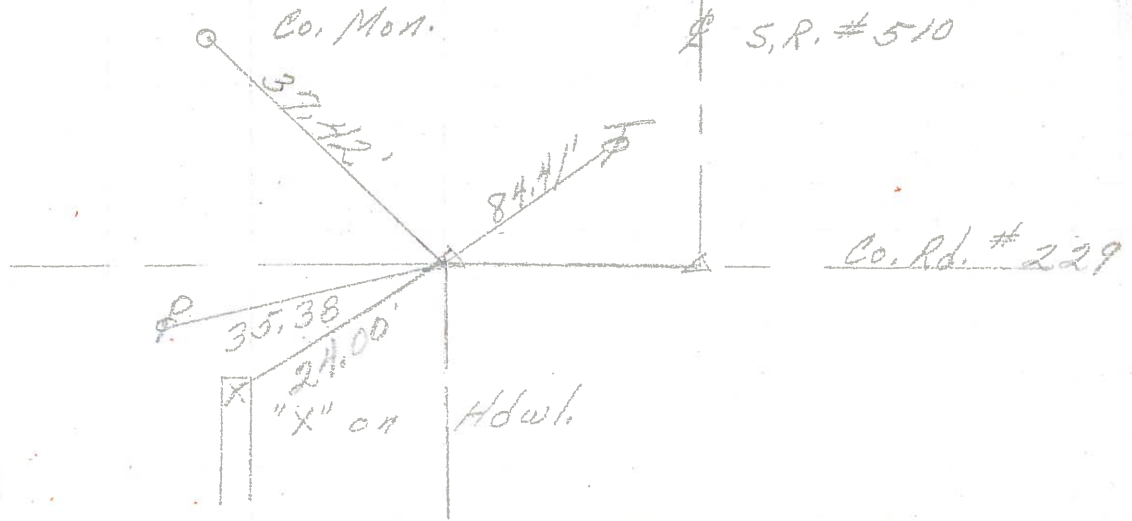


PERSONNEL	TITLE	PERSONNEL	TITLE
COUNTY <u>Sandusky</u>		DATE <u>8-21-72</u> <u>4-14-71</u>	
S. R. <u>510</u>		WEATHER <u>Fair</u>	
SEC. <u>US. 20 to US. 6</u>		TEMP. <u>32°</u>	

DESCRIPTION	LEFT	CENTER LINE	RIGHT	JOB NO.
-------------	------	-------------	-------	---------

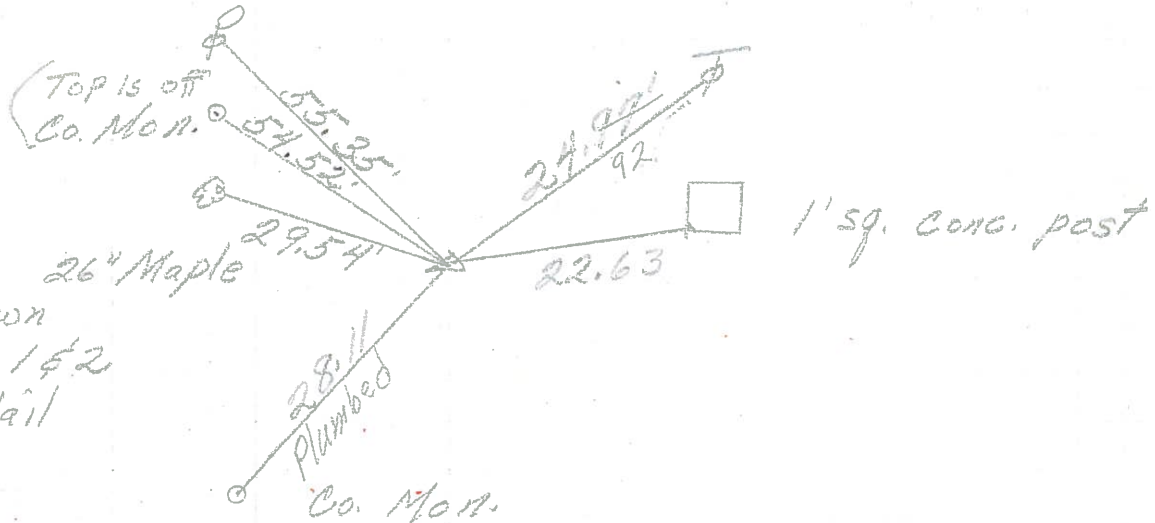
①.

Iron pipe
over stone



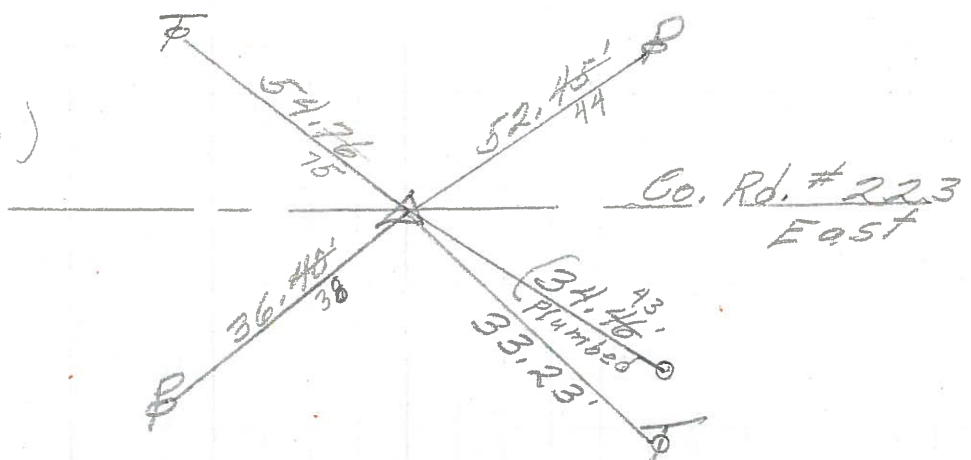
②.

106+34
Bolt over
Stone 2" down
Center sec 1 & 2
Reset P.K. Nail



③.

79+
sq. Bolt (Reidug)
Iron Pin
3' N. of stone
1" down
2 1/2' Rt. of Φ



PERSONNEL	TITLE	PERSONNEL	TITLE	COUNTY	DATE
<u>Schneider</u>		<u>Potts</u>		<u>Sandusky</u>	<u>4-22-68</u>
<u>Mosser</u>				S. R.	WEATHER
<u>Barbour</u>				<u>510</u>	<u>Fair</u>
<u>Redding</u>				SEC. U.S. #20 to U.S. #6	TEMP. <u>65°</u>
DESCRIPTION	<u>Ties for Control Points</u>				JOB NO.

