

O.D.O.T. DISTRICT 2 SURVEY OFFICE (USE ONLY)

PERSONNEL

REFERENCE NO. 7 A

SHEET 8 OF 17

NOTES GARRETT

DATE 7/23/20

ROUTE SR 510

H.C. RHOADES

WEATHER CLOUDY

COUNTY SANDUSKY

R.C. MAHLER

TEMP. 77°

TOWNSHIP RILEY

SECTION 35

DWG BY RHOADES

PID PAVE TRAIN

T 5 N R 16 E

TYPE MONUMENT 3/4" IPIN OVER STONE

ON SURFACE - ~~BELOW~~ ON

OFFSET C PAVEMENT 50' ~~ET~~ : RT

- TO - EDGE PAVEMENT

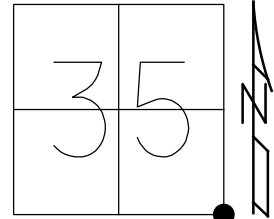
STATION: 132+52

HORZ.DATUM: NAD83 2011

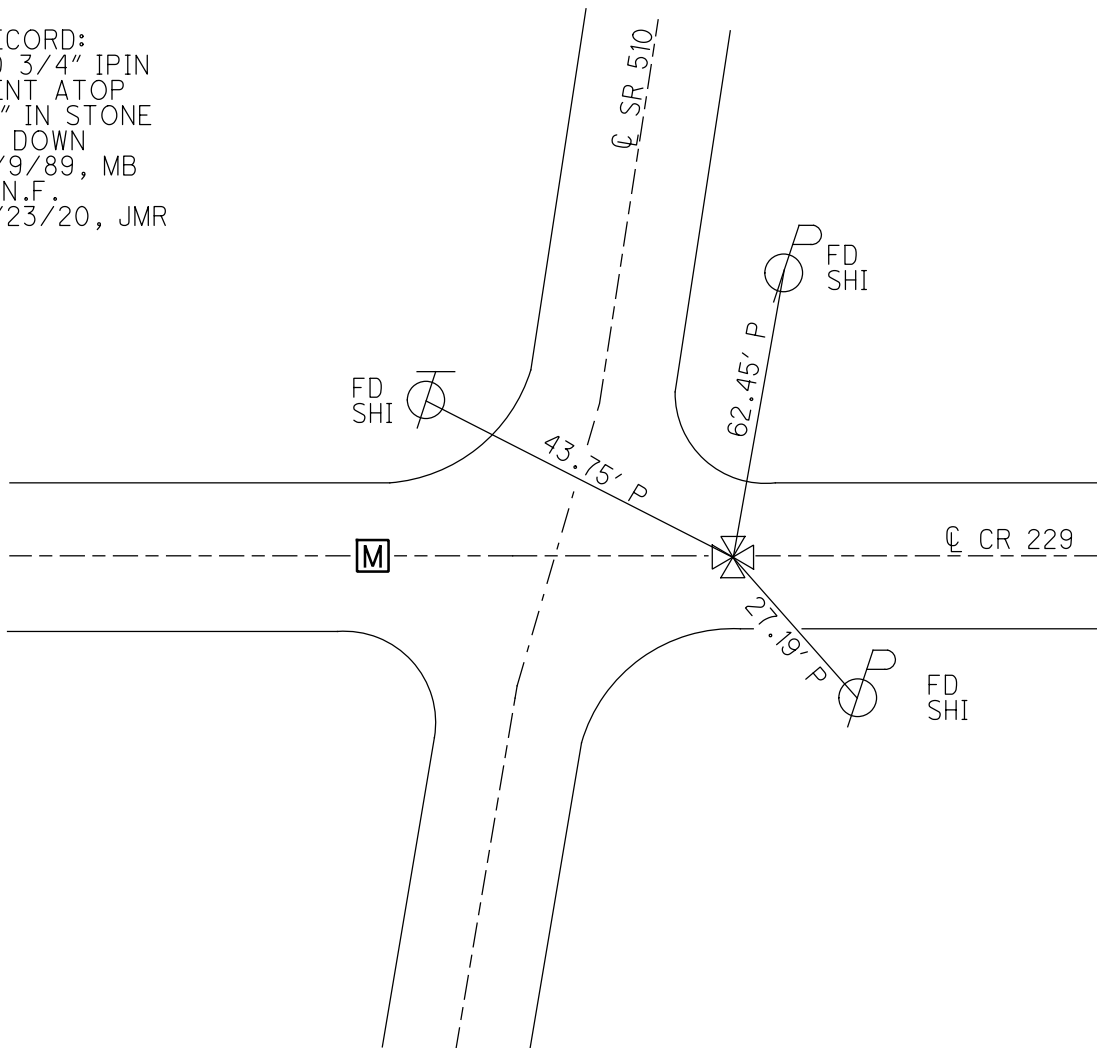
GEOID: NAVD88 2012A

GRID: NORTHING: _____

EASTING: _____



RECORD:
 FD 3/4" IPIN
 BENT ATOP
 "X" IN STONE
 9" DOWN
 11/9/89, MB
 D.N.F.
 7/23/20, JMR



O.D.O.T. DISTRICT 2 SURVEY OFFICE (USE ONLY)

PERSONNEL

REFERENCE NO. 7 A

SHEET 8 OF 17

NOTES HOFFMAN

DATE 11/9/89

ROUTE SR 510

H.C. BARNHISEL

WEATHER CLOUDY

COUNTY SANDUSKY

R.C. _____

TEMP. 42°

TOWNSHIP RILEY

DWG BY _____ PID _____

SECTION 35

T 5 N R 16 E

TYPE MONUMENT 3/4" IPIN OVER STONE

ON SURFACE - ~~BELOW~~ ON

OFFSET C PAVEMENT 50'± RT : RT

- TO - EDGE PAVEMENT

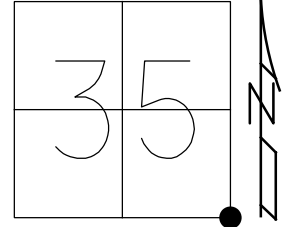
STATION: 132+52±

HORZ.DATUM: _____

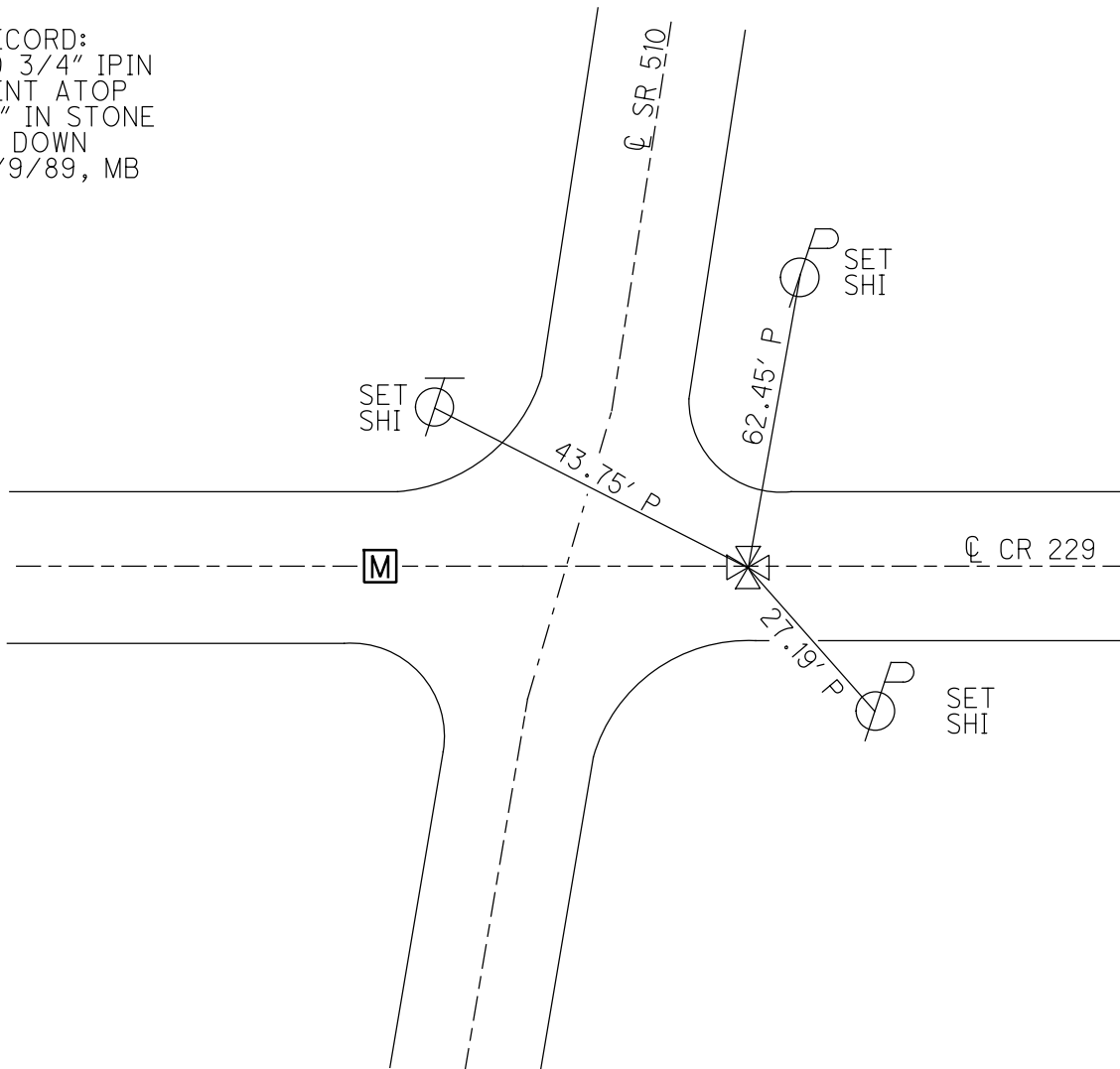
GEOID: _____

GRID: NORTHING: _____

EASTING: _____



RECORD:
FD 3/4" IPIN
BENT ATOP
"X" IN STONE
9" DOWN
11/9/89, MB



O.D.O.T. DISTRICT 2 SURVEY OFFICE

PERSONNEL _____

REFERENCE NO. 7A

SHEET 8 OF 17

NOTES HOFFMAN

DATE 11-9-89

ROUTE SR 510

H.C. BARNHISEL

WEATHER CLOUDY

COUNTY SANDUSKY

R.C. _____

TEMP. 42°

TOWNSHIP RILEY/GREEN

SECTION 35-36/1-2

T 4 N R 16 E

TYPE MONUMENT STONE w/ "x"

ALSO A
3/4" I. ROD
BENT OVER
ATOP "x"

35	36
2	1



~~ON SURFACE~~ - BELOW 9"

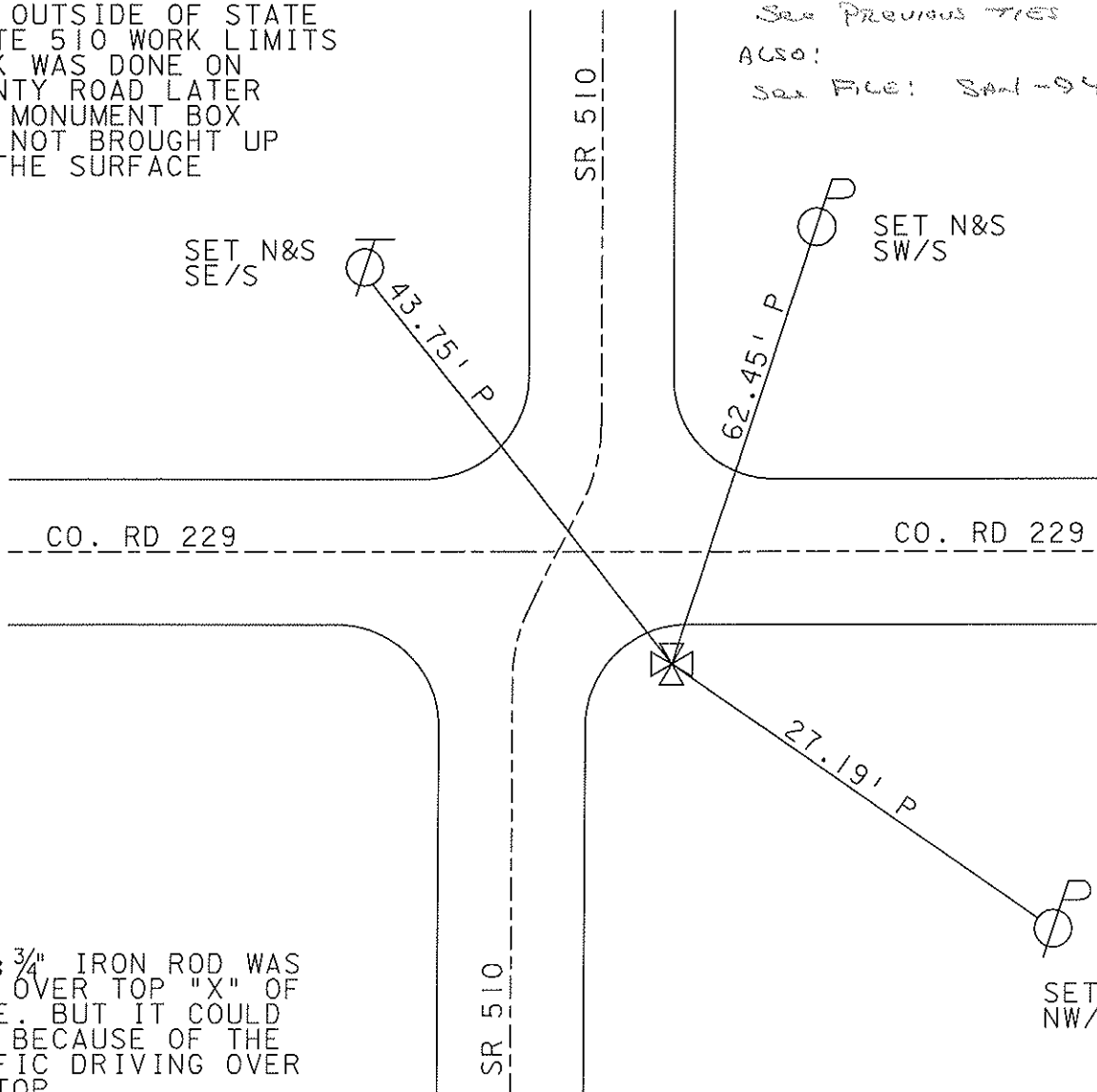
~~LEFT - Q PAVE~~ - RIGHT 1'

1' TO SOUTH EDGE PAVEMENT

S.L.M. _____

NOTE: MONUMENT BOX
WAS OUTSIDE OF STATE
ROUTE 510 WORK LIMITS
WORK WAS DONE ON
COUNTY ROAD LATER
AND MONUMENT BOX
WAS NOT BROUGHT UP
TO THE SURFACE

Note:
See Previous TIES
Also:
see file: 8-1-94



NOTE: 3/4" IRON ROD WAS
BENT OVER TOP "X" OF
STONE. BUT IT COULD
MOVE BECAUSE OF THE
TRAFFIC DRIVING OVER
THE TOP.

O.D.O.T. DISTRICT 2 SURVEY OFFICE

PERSONNEL

REFERENCE NO. 7-A

SHEET 6 OF 15

NOTES Ripple

H.C. Barbour

DATE 8/14/90

ROUTE SR. #510

R.C. Geyman

WEATHER SUNNY

COUNTY SANDUSKY

TEMP. 79°

TOWNSHIP Riley

SECTION 35 & 36

T 5 N R 16 E

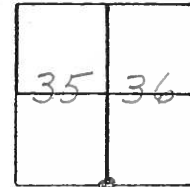
TYPE MONUMENT STONE

ON SURFACE - BELOW 9" X 1' Limestone

LEFT - & PAV'T. - RIGHT TO RT. & PAV'T.

TO EDGE PAVEMENT

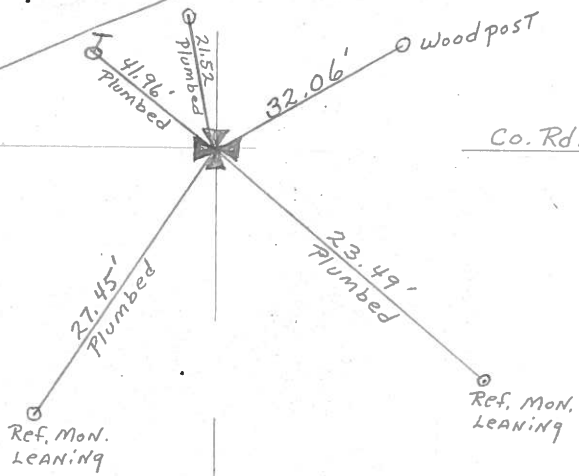
S.L.M. _____



9" X 1' Limestone "t" ON Top
9" below surface 3/4" I. Rod
.43 S. of "t" ON Stone
1' South - South edge of point



R/W SR. #510



O.D.O.T. DISTRICT 2 SURVEY OFFICE

PERSONNEL

REFERENCE NO. 7-A

SHEET 6 OF 15

NOTES Hoffman

H.C. BARNHISEL

DATE 11-9-89

ROUTE SR 510

R.C. _____

WEATHER P. CLEAR

COUNTY SANDUSKY

TEMP. 42° - WINDY

TOWNSHIP Riley & Green Creek

SECTION 1-2/35-36

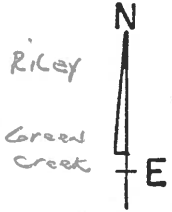
T^{4E} N R 16 E

TYPE MONUMENT STONE w/ "t"

ALSO A
3/4" I. ROD
BENT OVER
TOP "t" of
STONE

ON SURFACE - BELOW 9'

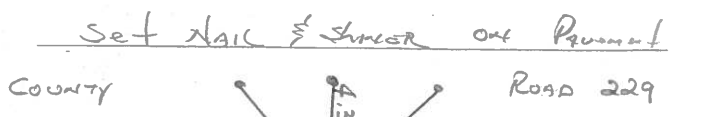
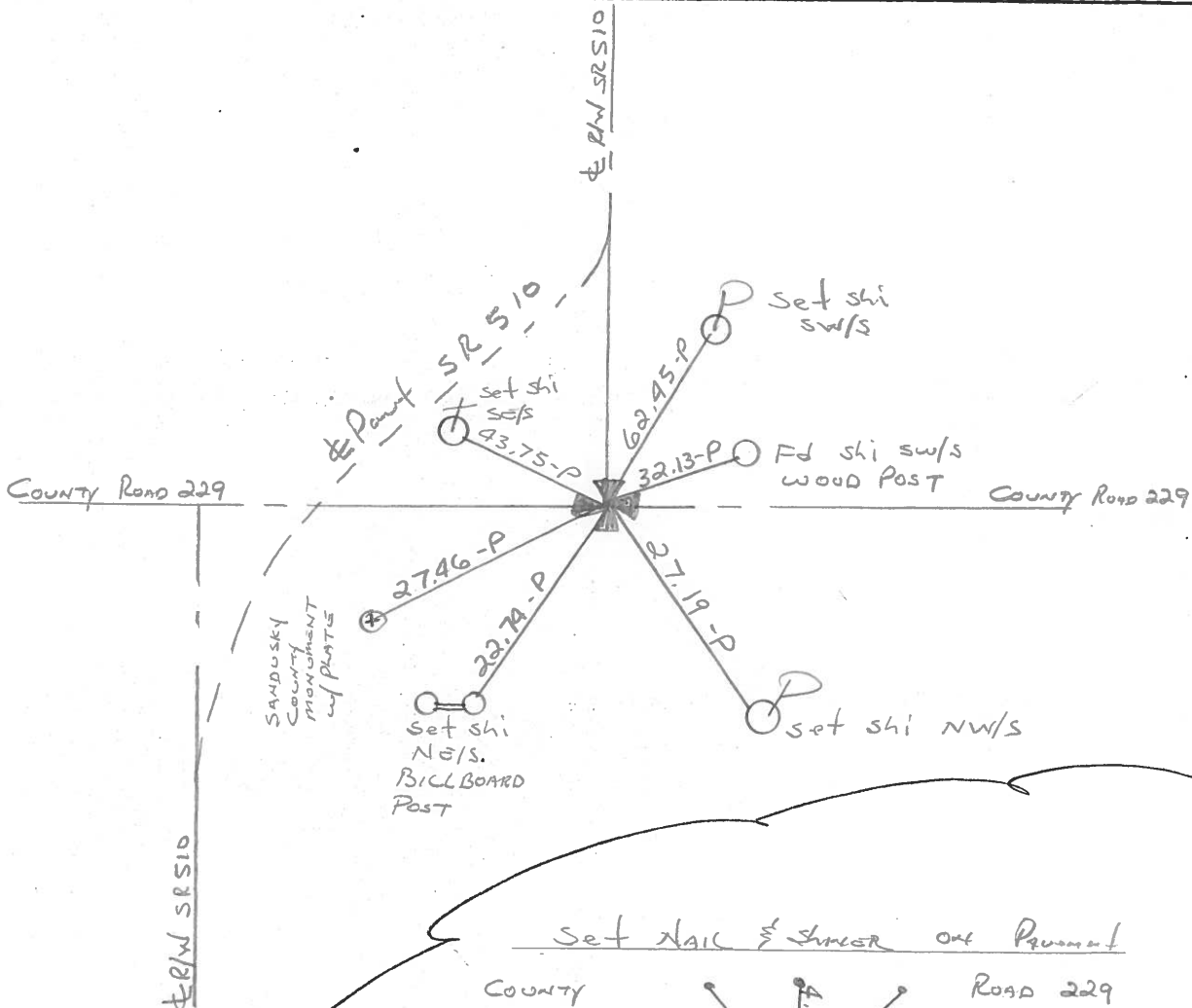
35	36	Riley
2	1	Green Creek



~~LEFT - C PAV'T - RIGHT~~ 1'

1' TO SOUTH EDGE PAVEMENT

S.L.M. _____



Notes: 3/4" I. ROD
WAS BENT OVER
TOP "t" of STONE.
BUT IT COULD MOVE
BECAUSE OF THE TRAFFIC
DRIVING OVER THE TOP.

CROSS FOUND ON
TOP OF 9" X 11"
LIME STONE; 9"
BELOW SURFACE

O.D.O.T. DISTRICT 2 SURVEY OFFICE

SHEET

OF

6

County Sandusky S.R. # 510

Township Riley

Section 35 E 36

T 5 N, R 16 E

Personnel Cronin

Ripple

Geyman

Mosser

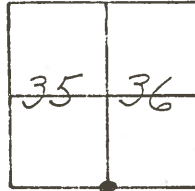
Barbour

#7-A

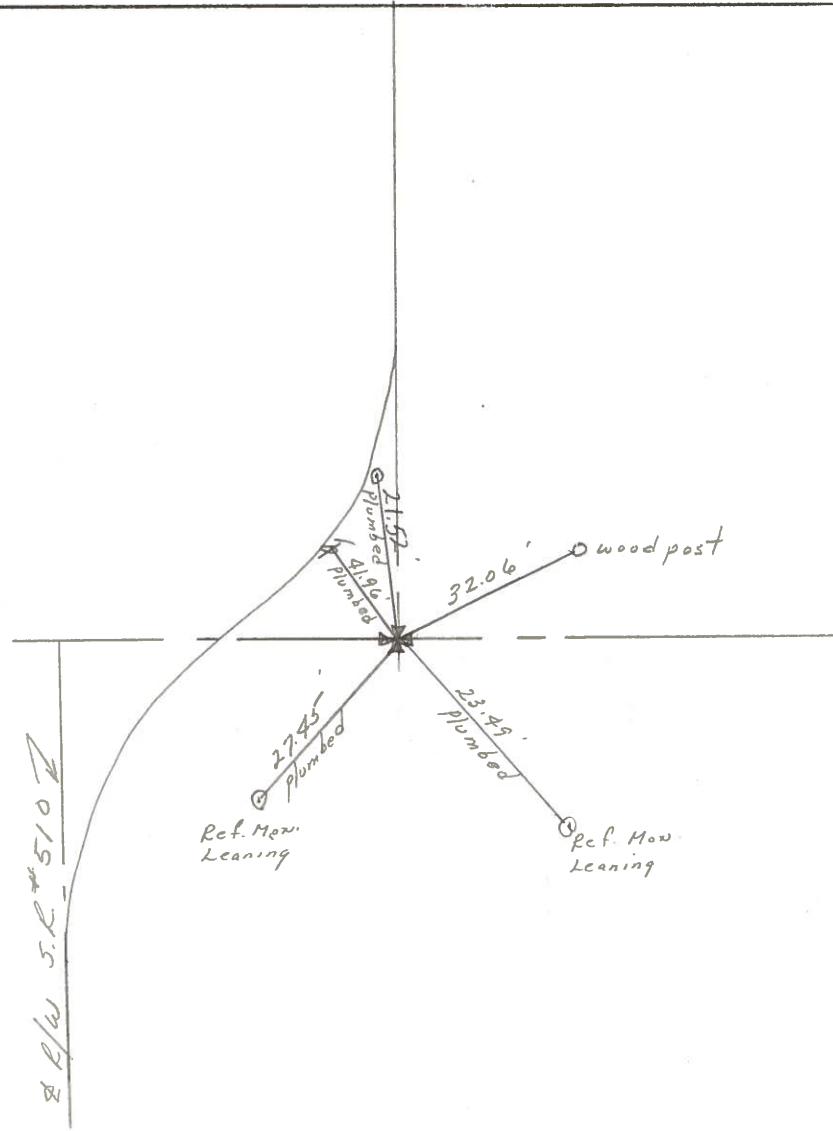
Date 4/26/82

Weather overcast

Temp. 75°



9x11' limestone 't' on
 top - 9" below surface 3/4"
 T. Rod .43 S. of 't' on stone
 1' south-south edge of permit



PERSONNEL TITLE PERSONNEL TITLE

COUNTY Sandusky DATE 8-21-72
4-15-71

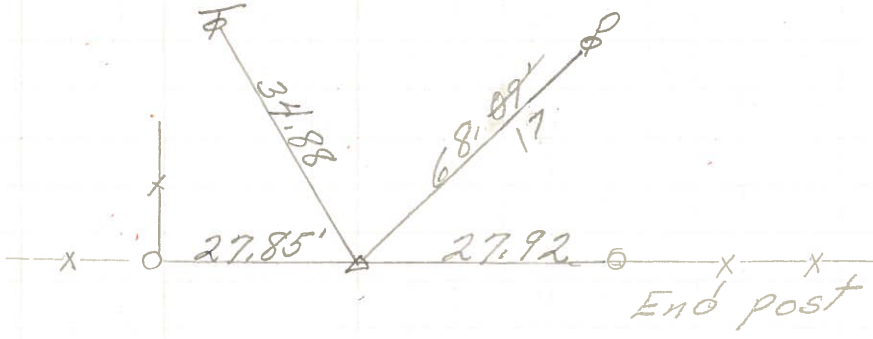
S. R. 510 WEATHER Fair

SEC. U.S. 20 to U.S. 6 TEMP. 50°

DESCRIPTION LEFT CENTER LINE RIGHT JOB NO.

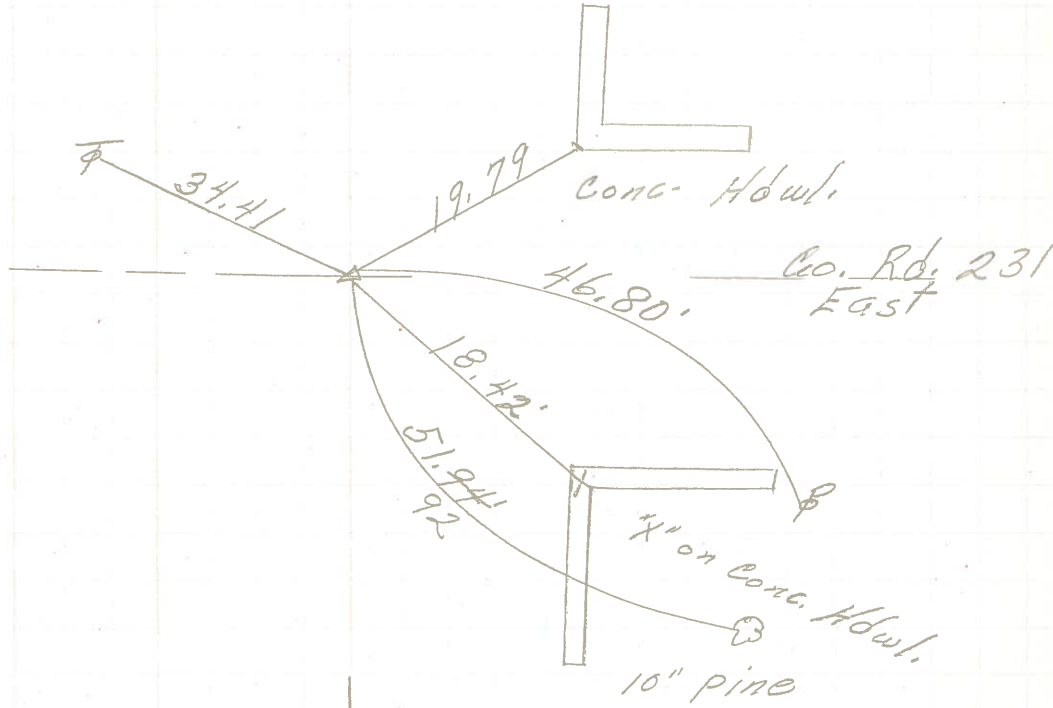
9

172 + 12.50
P.K. Nail
1 1/2" down
Reset small spk



8

158 + 92.80
Fd. P.K. Nail
4.3' Rt. of E



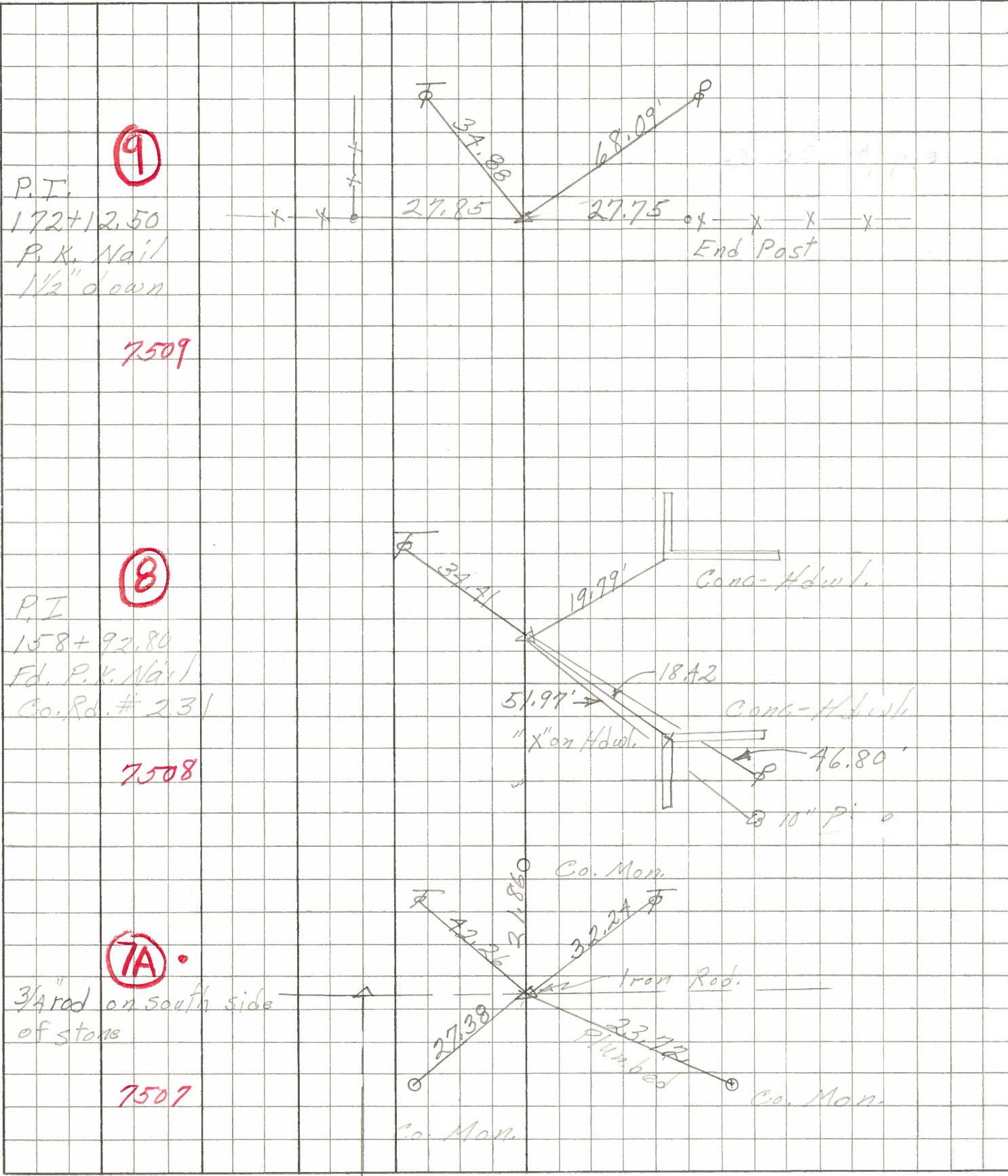
~~7A~~ 7A

3/4" rod on south
side of stone
1' S. of edge Parmit.



PERSONNEL	TITLE	PERSONNEL	TITLE	COUNTY	DATE
Schneider		Potts		Sandusky	2
Mosser				S. R. # 510	WEATHER
Barbour				SEC. U.S. # 206	TEMP. 6
Redding					

DESCRIPTION Ties for control Points JOB NO. _____



9
 P.T.
 172+12.50
 P.K. Nail
 1/2" down
 7509

8
 P.I.
 158+92.80
 Fd. P.K. Nail
 Co. Rd. # 231
 7508

7A
 3/4" rod on south side
 of stone
 7507

