

O.D.O.T. DISTRICT 2 SURVEY OFFICE (USE ONLY)

PERSONNEL

REFERENCE NO. 8

SHEET 9 OF 17

NOTES GARRETT

DATE 7/23/20

ROUTE SR 510

H.C. RHOADES

WEATHER CLOUDY

COUNTY SANDUSKY

R.C. MAHLER

TEMP. 77°

TOWNSHIP RILEY

SECTION 35

DWG BY RHOADES

PID PAVE TRAIN

T 5 N R 16 E

TYPE MONUMENT MAG/WASHER

ON SURFACE - ~~BELOW~~ ON

OFFSET  $\varnothing$  PAVEMENT 4.3' ~~LT~~ : RT

- TO - EDGE PAVEMENT

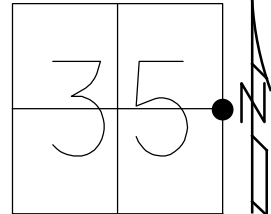
STATION: 159+50

HORIZ.DATUM: NAD83 2011

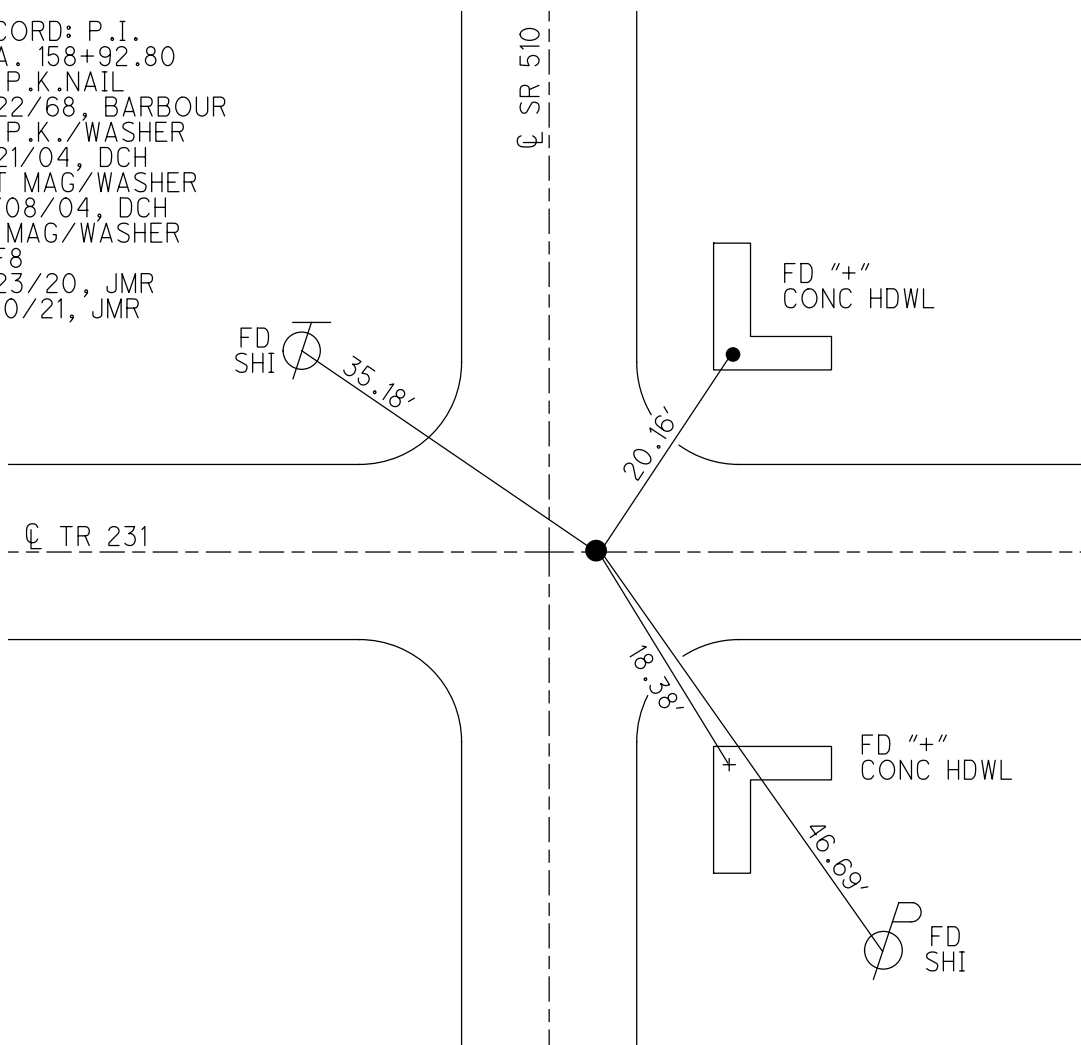
GEOID: NAVD88 2012A

GRID: NORTHING: 613783.993

EASTING: 1838329.599



RECORD: P.I.  
 STA. 158+92.80  
 FD P.K.NAIL  
 4/22/68, BARBOUR  
 FD P.K./WASHER  
 6/21/04, DCH  
 SET MAG/WASHER  
 10/08/04, DCH  
 FD MAG/WASHER  
 REF8  
 7/23/20, JMR  
 3/10/21, JMR



O.D.O.T. DISTRICT 2 SURVEY OFFICE (USE ONLY)

PERSONNEL \_\_\_\_\_

REFERENCE NO. 8

SHEET 9 OF 17

NOTES HOMAN

DATE 6/21/04

ROUTE SR 510

H.C. HOMAN

WEATHER SUNNY

COUNTY SANDUSKY

R.C. ADKINS

TEMP. 80°

TOWNSHIP RILEY

SECTION 35

DWG BY \_\_\_\_\_ PID \_\_\_\_\_

T 5 N R 16 E

TYPE MONUMENT P.K./WASHER

ON SURFACE - ~~BELOW~~ ON

OFFSET Q PAVEMENT 4.3' ~~±~~ : RT

- TO - EDGE PAVEMENT

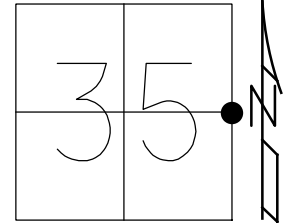
STATION: 159+50

HORIZ.DATUM: \_\_\_\_\_

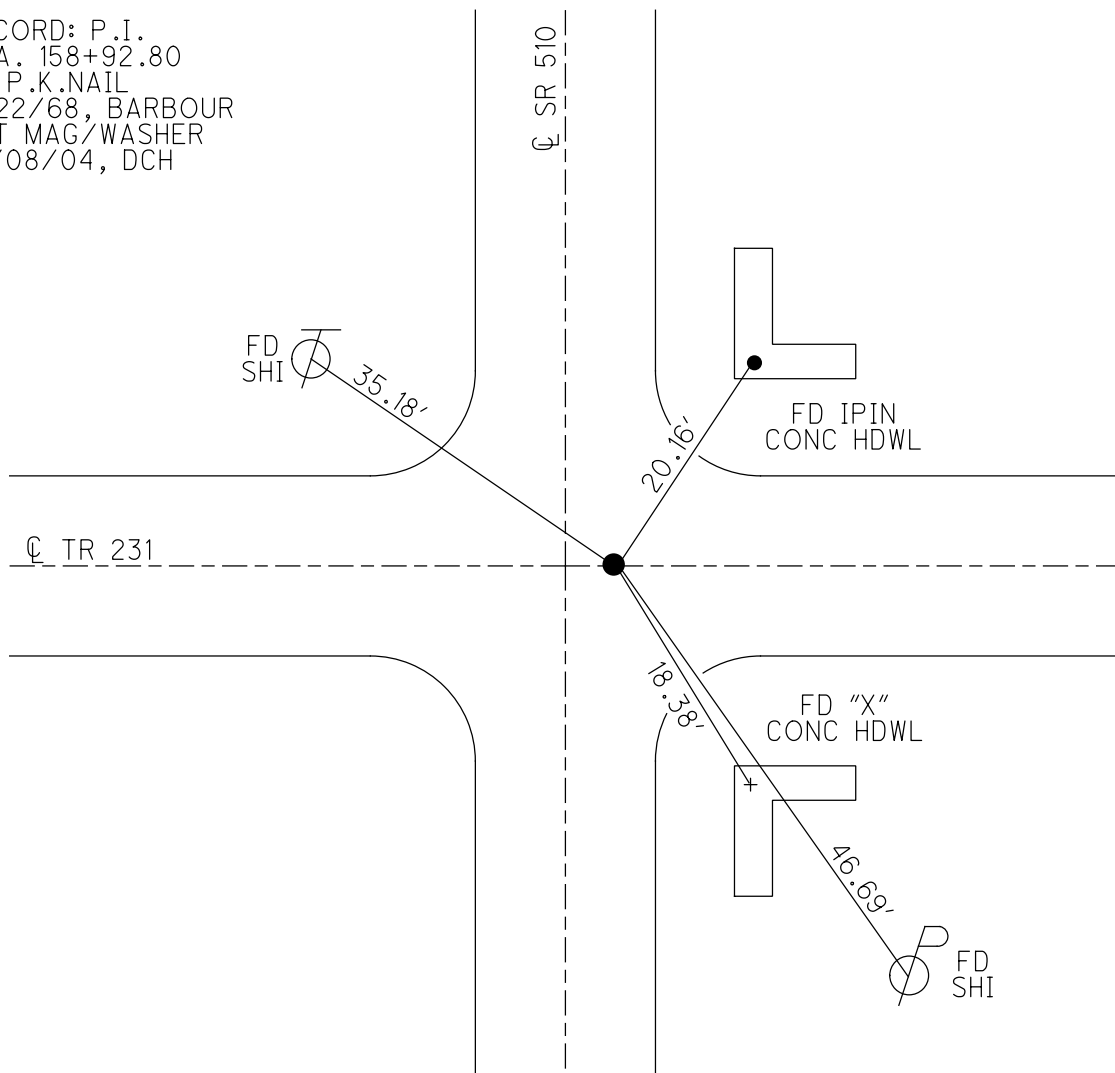
GEOID: \_\_\_\_\_

GRID: NORTHING: \_\_\_\_\_

EASTING: \_\_\_\_\_



RECORD: P.I.  
STA. 158+92.80  
FD P.K.NAIL  
4/22/68, BARBOUR  
SET MAG/WASHER  
10/08/04, DCH



O.D.O.T. DISTRICT 2 SURVEY OFFICE

PERSONNEL

REFERENCE NO. 8

SHEET 9 OF 17

NOTES HOMAN \_\_\_\_\_

DATE 6-21-04

ROUTE SR 510

H.C. HOMAN \_\_\_\_\_

WEATHER SUNNY

COUNTY SANDUSKY

R.C. ADKINS \_\_\_\_\_

TEMP. +80°

TOWNSHIP RILEY

SECTION 35&36

T 5 N R 16 E

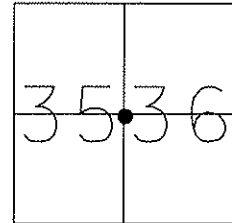
TYPE MONUMENT P.K & WASHER

~~ON SURFACE~~ - BELOW YES

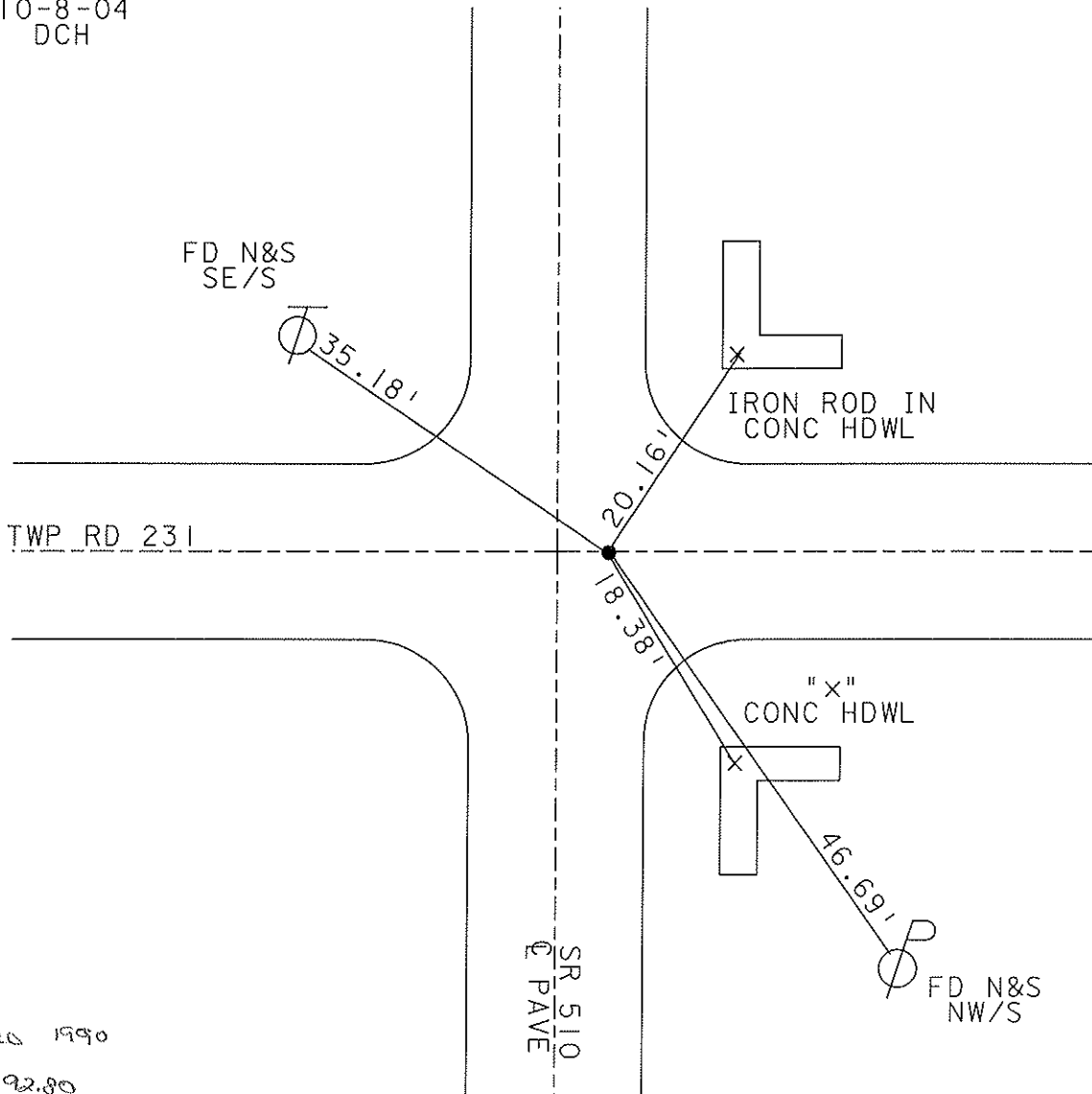
~~LEFT - Q PAVE~~ - RIGHT 4.3' RT

TO EDGE PAVEMENT

S.L.M. 159+50



RESET MAG NAIL  
10-8-04  
DCH



Records 1990

158+92.80

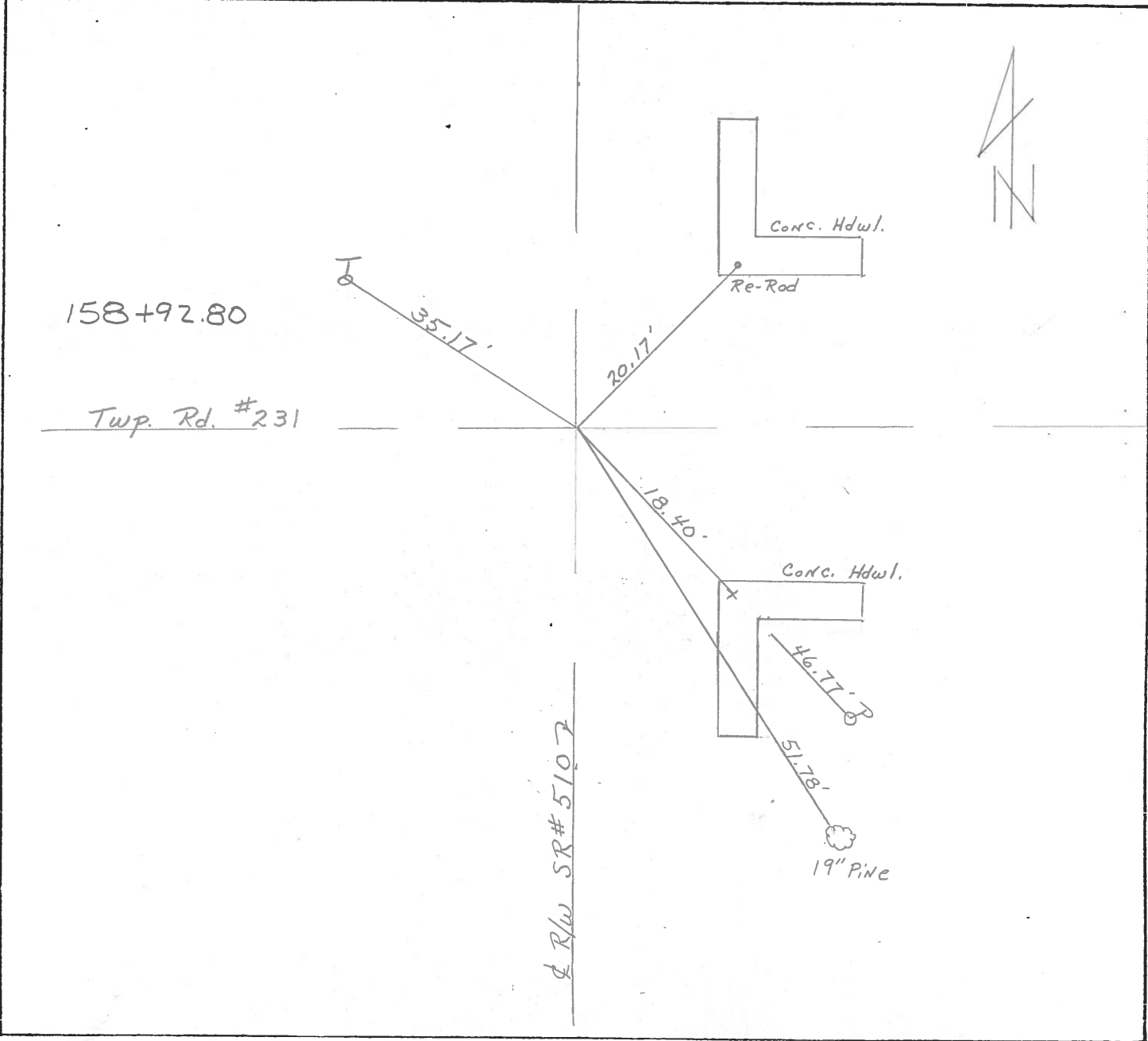
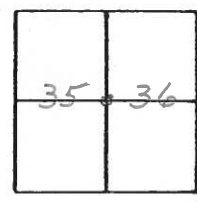
P.K. Washer

O.D.O.T. DISTRICT 2 SURVEY OFFICE

PERSONNEL \_\_\_\_\_ REFERENCE NO. 8 SHEET 7 OF 15

NOTES RIPPLE  
 H.C. BARBOUR DATE 8/14/90 ROUTE SR#590  
 R.C. GEYMAN WEATHER SUNNY COUNTY SANDUSKY  
 \_\_\_\_\_ TEMP. 79° TOWNSHIP Riley  
 \_\_\_\_\_ SECTION 35 & 36  
 \_\_\_\_\_ T 5 N R 16 E

TYPE MONUMENT P.K. & WASHER  
 ON SURFACE - BELOW A Top P.K. & WASHER  
 LEFT - ☉ PAV'T. - RIGHT 4.3' ± RT. & PAV'T.  
 \_\_\_\_\_ TO \_\_\_\_\_ EDGE PAVEMENT  
 S.L.M. \_\_\_\_\_



O.D.O.T. DISTRICT 2 SURVEY OFFICE

SHEET

OF

County Sandusky S.R. # 510

Date 9/10/82

Township Riley

Weather sunny

Section 35 & 36

Temp. 72°

T 5 N, R 16 E

Personnel Cronin

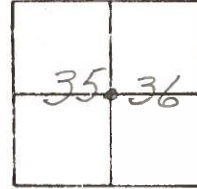
Lipple

Geyman

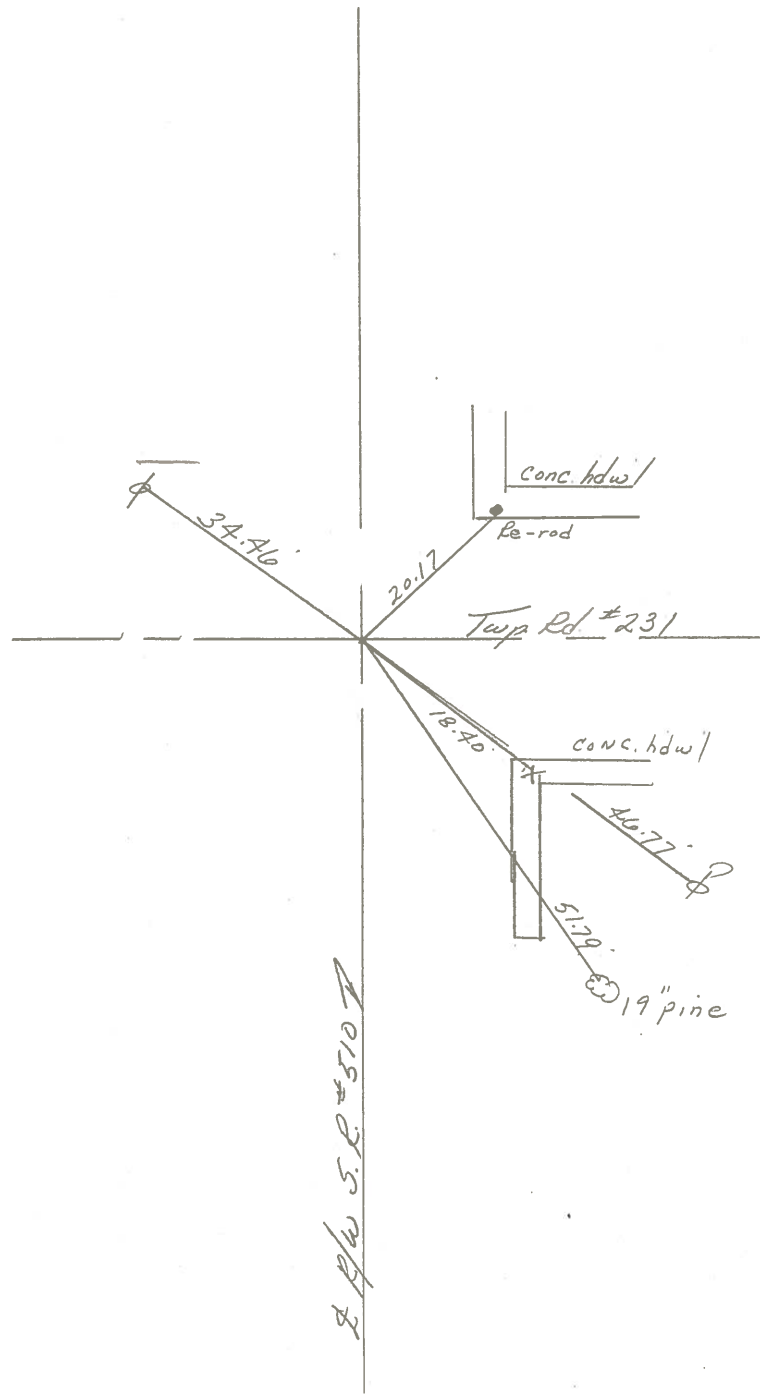
Mosser

Barbour

# 8



158+92.80  
set P.K. & washer at top P.K. &  
washer 4.3 ± ft. & pavement



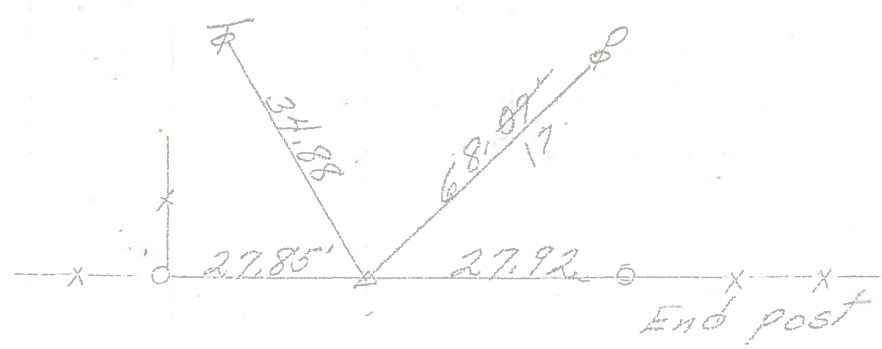
PERSONNEL	TITLE	PERSONNEL	TITLE

COUNTY Sandusky DATE 4-15-71  
 S. R. 510 WEATHER Fair  
 SEC. U.S. 20 to U.S. 6 TEMP. 50°

DESCRIPTION \_\_\_\_\_ LEFT \_\_\_\_\_ CENTER LINE \_\_\_\_\_ RIGHT \_\_\_\_\_ JOB NO. \_\_\_\_\_

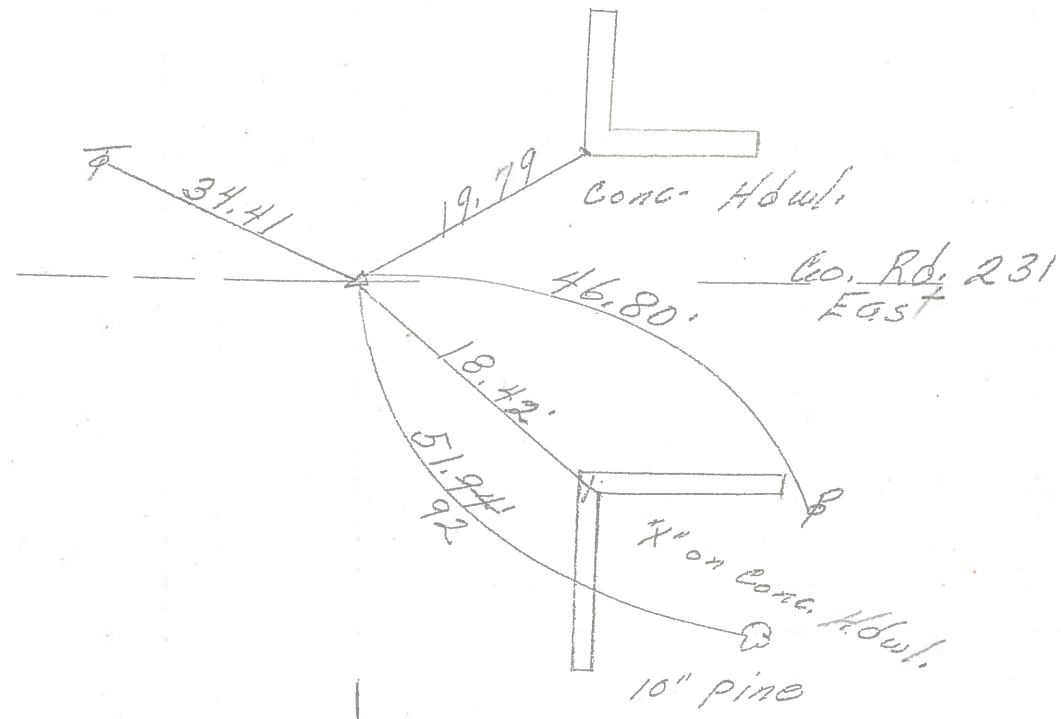
9

172+12.50  
 P. K. Nail  
 1/2" down  
 Reset small spk



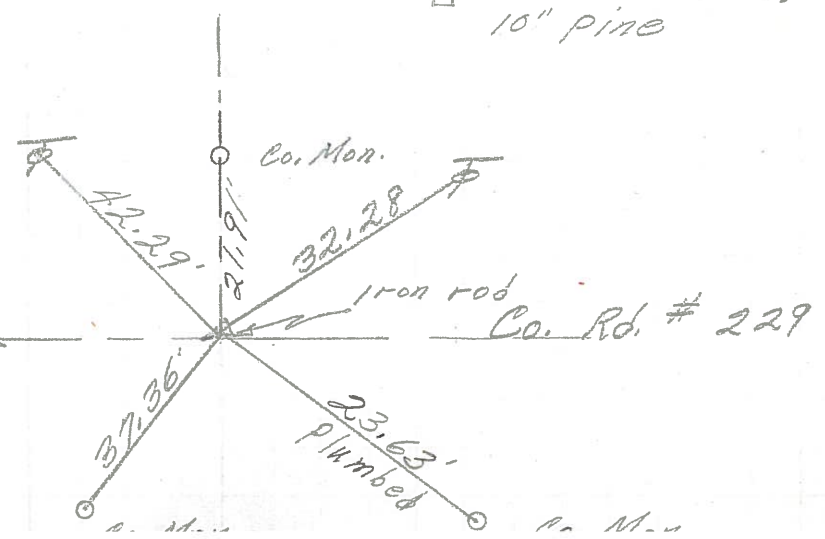
8

158+92.80  
 Fd. P.K. Nail  
 4.3' Rt. of E.



~~7A~~

3/4" rod on south  
 side of stone  
 1' s. of edge Parmit.



PERSONNEL	TITLE	PERSONNEL	TITLE	COUNTY	DATE
Schneider		Potts		Sandusky	9-22-68
Mosser				S. R. # 510	WEATHER Fair
Barbour				SEC. U.S. #20 to U.S. #6	TEMP. 65°
Redding					

DESCRIPTION Ties for control Points JOB NO. \_\_\_\_\_

