

O.D.O.T. DISTRICT 2 SURVEY OFFICE (USE ONLY)

PERSONNEL _____ REFERENCE NO. 10 SHEET 11 OF 18

NOTES RHOADES DATE 7/20/22 ROUTE SR 510
 H.C. RHOADES WEATHER HUMID COUNTY SANDUSKY
 R.C. WHITAKER TEMP. 84° TOWNSHIP RILEY
 SECTION 26

DWG BY WHITAKER PID PVTRN T 5 N R 16 E

TYPE MONUMENT MAG/WASHER

ON SURFACE - ~~BELOW~~ ON

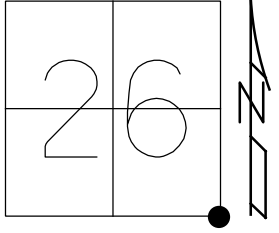
OFFSET C PAVEMENT 0.8' LT : ~~RT~~

- TO - EDGE PAVEMENT

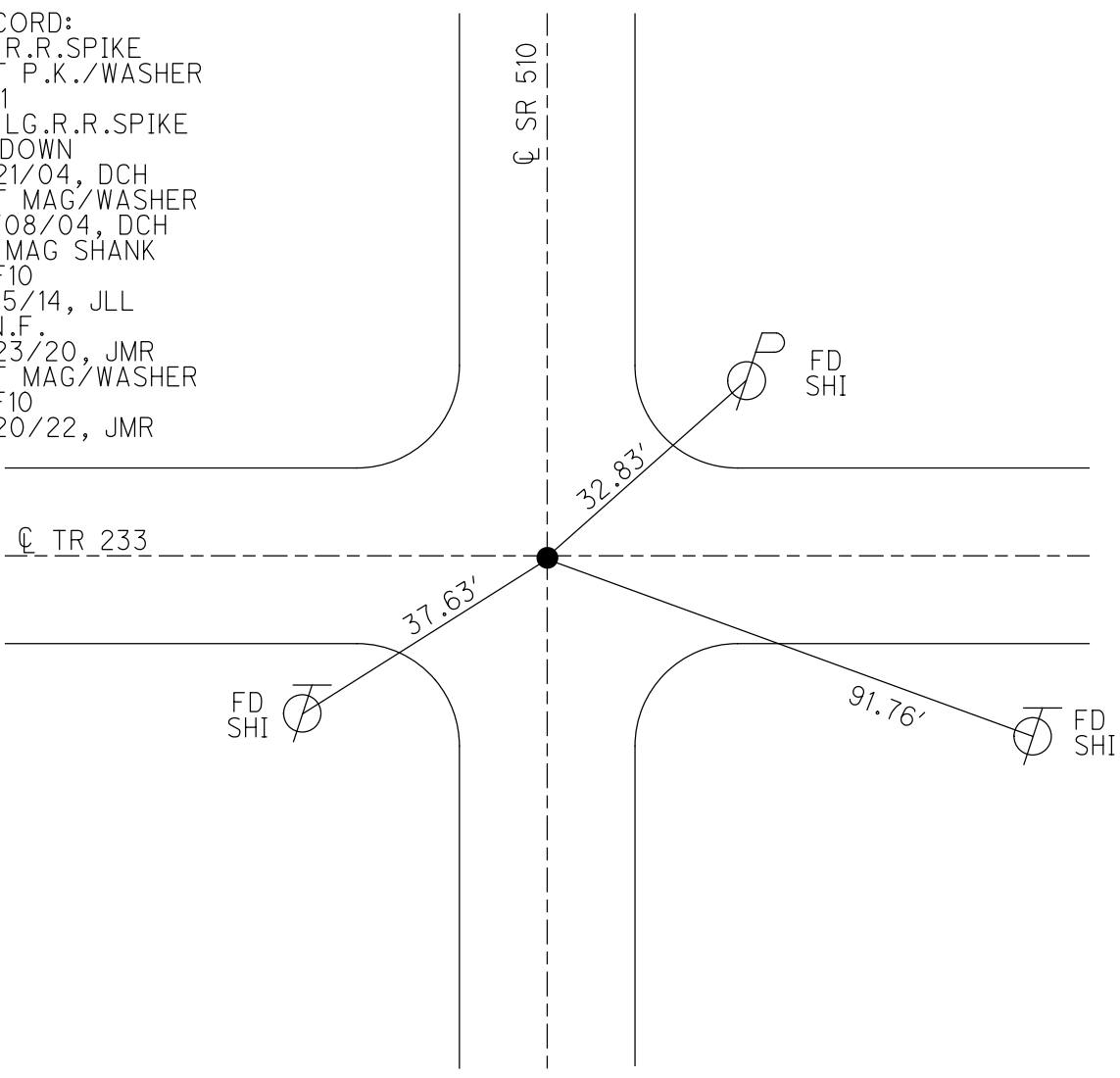
STATION: 185+95

HORZ. DATUM: NAD83 2011 GEOID: NAVD88 2012A

GRID: NORTHING: 616423.172 EASTING: 1838390.514



RECORD:
 FD R.R.SPIKE
 SET P.K./WASHER
 1971
 FD LG.R.R.SPIKE
 3" DOWN
 6/21/04, DCH
 SET MAG/WASHER
 10/08/04, DCH
 FD MAG SHANK
 REF10
 9/15/14, JLL
 D.N.F.
 7/23/20, JMR
 SET MAG/WASHER
 REF10
 7/20/22, JMR



O.D.O.T. DISTRICT 2 SURVEY OFFICE (USE ONLY)

PERSONNEL

REFERENCE NO. 10

SHEET 11 OF 17

NOTES GARRETT
H.C. RHOADES
R.C. MAHLER

DATE 7/23/20
WEATHER CLOUDY
TEMP. 77°

ROUTE SR 510
COUNTY SANDUSKY
TOWNSHIP RILEY
SECTION 26

DWG BY RHOADES PID PAVE TRAIN

T 5 N R 16 E

TYPE MONUMENT MAG SHANK

ON SURFACE - ~~BELOW~~ ON

OFFSET Q PAVEMENT ON LT : RT

- TO - EDGE PAVEMENT

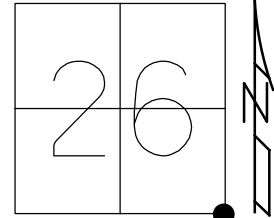
STATION: 185+95

HORZ.DATUM: NAD83 2011

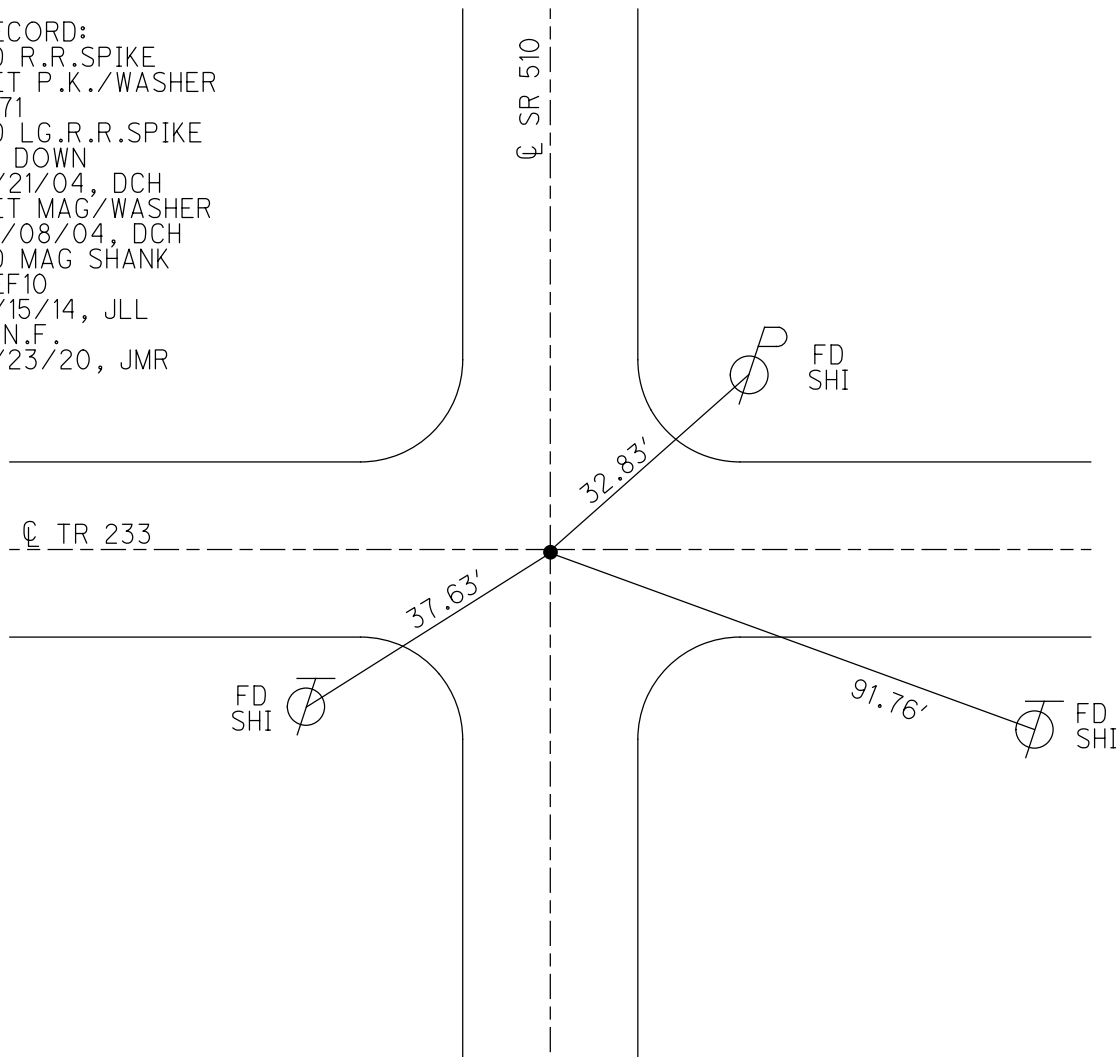
GEOID: NAVD88 2012A

GRID: NORTHING: 616423.180

EASTING: 1838390.574



RECORD:
FD R.R.SPIKE
SET P.K./WASHER
1971
FD LG.R.R.SPIKE
3" DOWN
6/21/04, DCH
SET MAG/WASHER
10/08/04, DCH
FD MAG SHANK
REF10
9/15/14, JLL
D.N.F.
7/23/20, JMR



O.D.O.T. DISTRICT 2 SURVEY OFFICE (USE ONLY)

PERSONNEL _____

REFERENCE NO. 10

SHEET 11 OF 17

NOTES HOMAN

DATE 6/21/04

ROUTE SR 510

H.C. HOMAN

WEATHER SUNNY

COUNTY SANDUSKY

R.C. ADKINS

TEMP. 80°

TOWNSHIP RILEY

SECTION 26

DWG BY _____ PID _____

T 5 N R 16 E

TYPE MONUMENT LG.R.R.SPIKE

~~ON SURFACE~~ - BELOW 3"

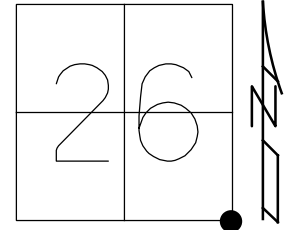
OFFSET \odot PAVEMENT ON _____ LT : RT

- TO - EDGE PAVEMENT

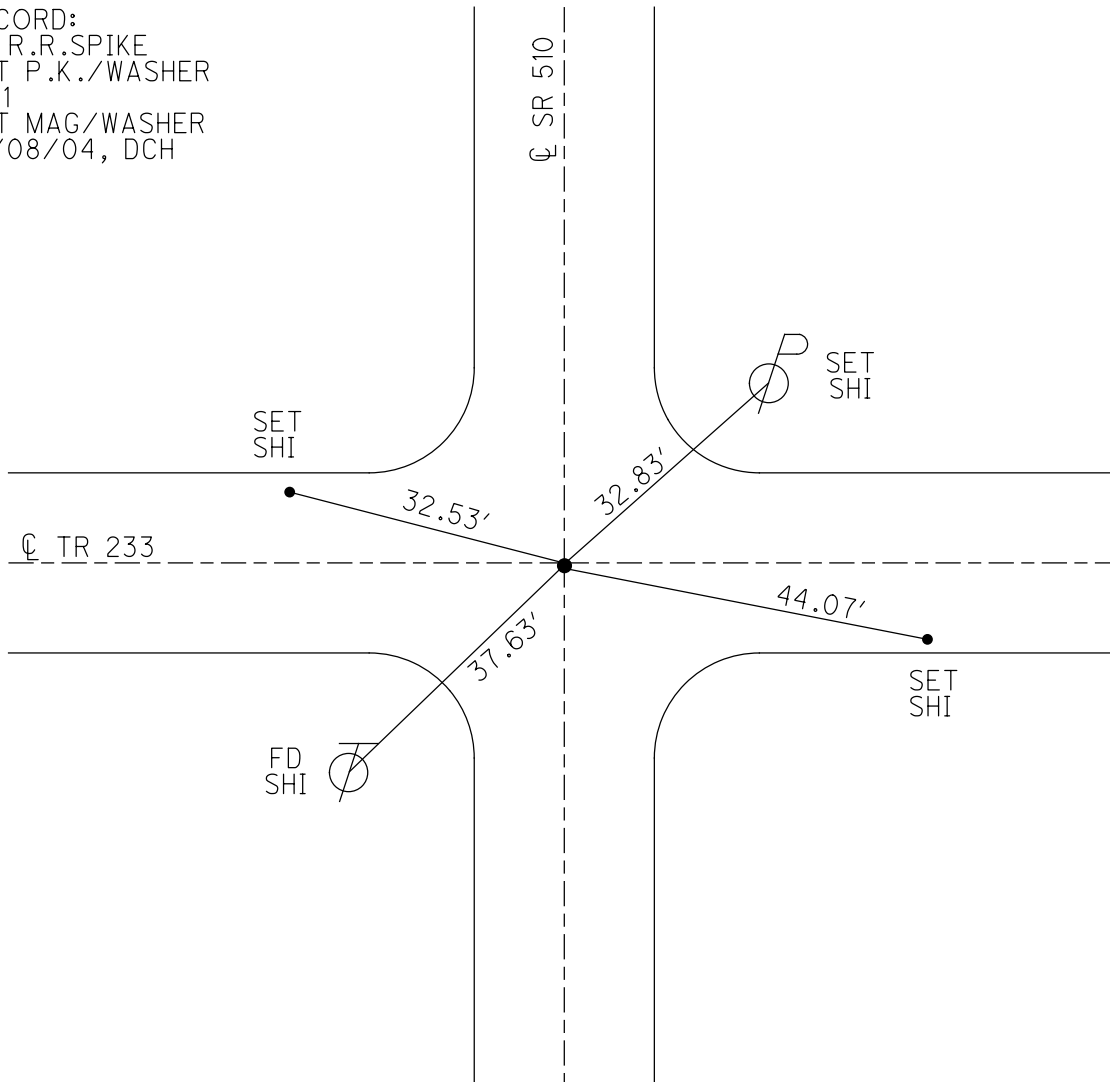
STATION: 185+95

HORIZ.DATUM: _____ GEOID: _____

GRID: NORTHING: _____ EASTING: _____



RECORD:
FD R.R.SPIKE
SET P.K./WASHER
1971
SET MAG/WASHER
10/08/04, DCH



O.D.O.T. DISTRICT 2 SURVEY OFFICE

PERSONNEL _____

REFERENCE NO. 10

SHEET 11 OF 17

NOTES HOMAN _____

DATE 6-21-04

ROUTE SR 510

H.C. HOMAN _____

WEATHER SUNNY

COUNTY SANDUSKY

R.C. ADKINS _____

TEMP. +80°

TOWNSHIP RILEY

SECTION 25-26-35-36

T 5 N R 16 E

TYPE MONUMENT LG RR SPK

~~ON~~ SURFACE - BELOW 3"

~~LEFT~~ - Q PAV'T - ~~RIGHT~~

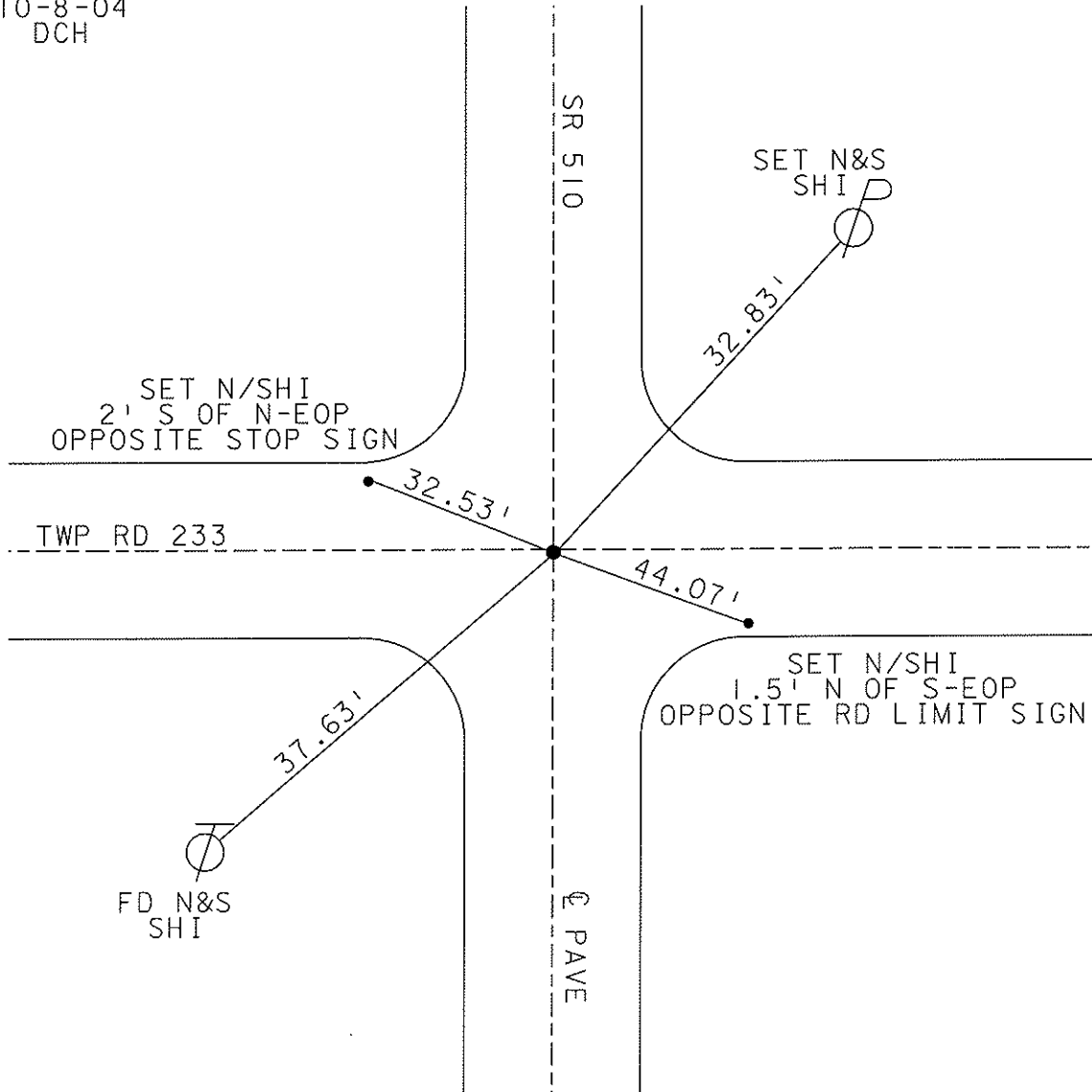
TO EDGE PAVEMENT

S.L.M. 185+95

26	25
35	36



RESET MAG NAIL
10-8-04
DCH



O.D.O.T. DISTRICT 2 SURVEY OFFICE

PERSONNEL

REFERENCE NO. 10

SHEET 9 OF 15

NOTES Ripple

H.C. BARBOUR

DATE 8/15/90

ROUTE SR # 510

R.C. Geyman

WEATHER SUNNY

COUNTY SANDUSKY

TEMP. 65°

TOWNSHIP Riley

SECTION 25, 26, 35, & 36

T 5 N R 16 E

TYPE MONUMENT Set PK. & Washer.

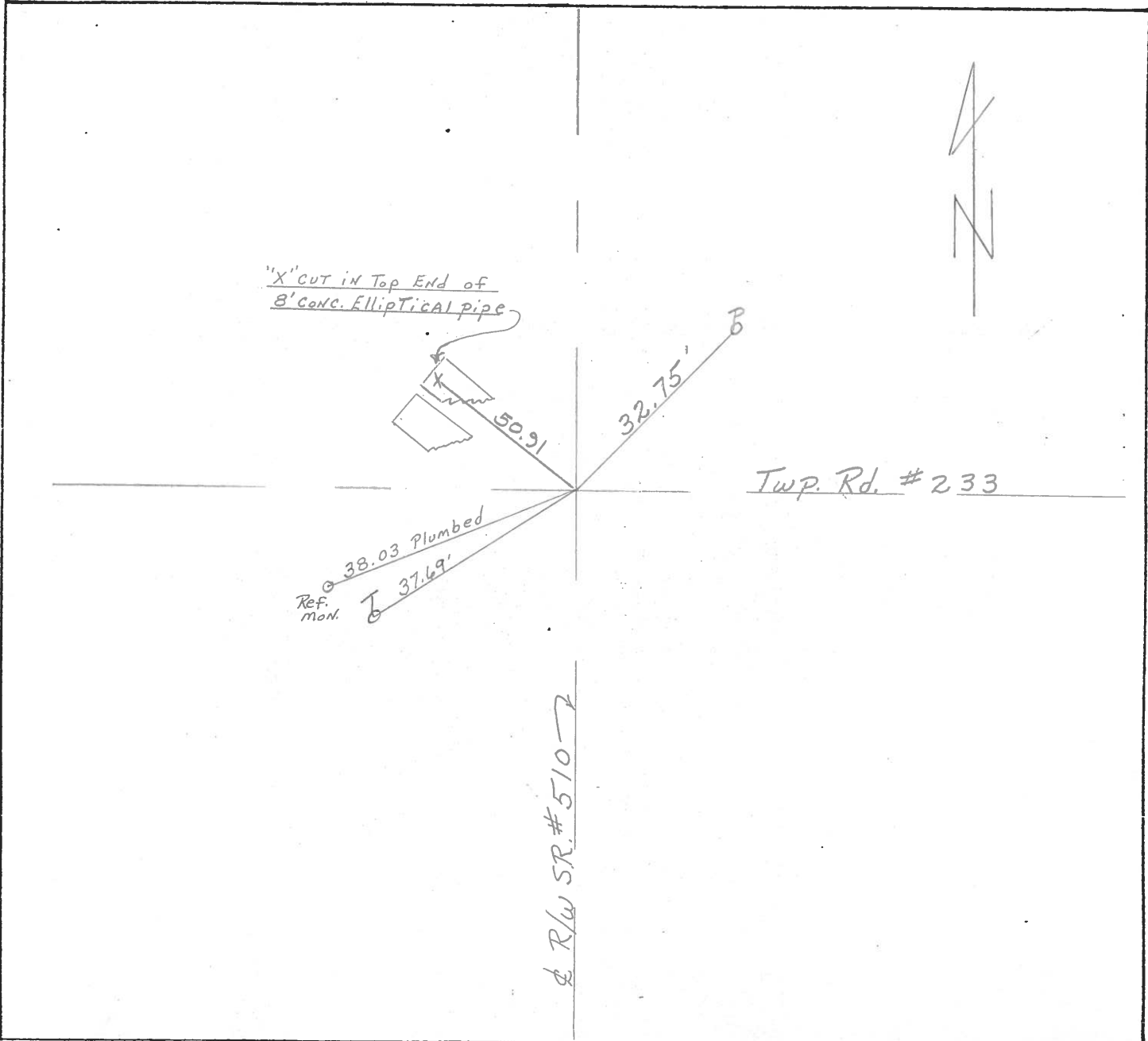
ON SURFACE - BELOW A Top PK. & Washer A Top RR. Spike

LEFT - ☉ PAV'T. - RIGHT ☉

TO EDGE PAVEMENT

S.L.M. _____

26	25
35	36



O.D.O.T. DISTRICT 2 SURVEY OFFICE

SHEET

OF

County Sandusky S.R. # 510

Date 9/10/82

Township Riley

Weather sunny

Section 25, 26, 35, & 36

Temp. 75°

T5N, R16E

Personnel Cronin

Ripple

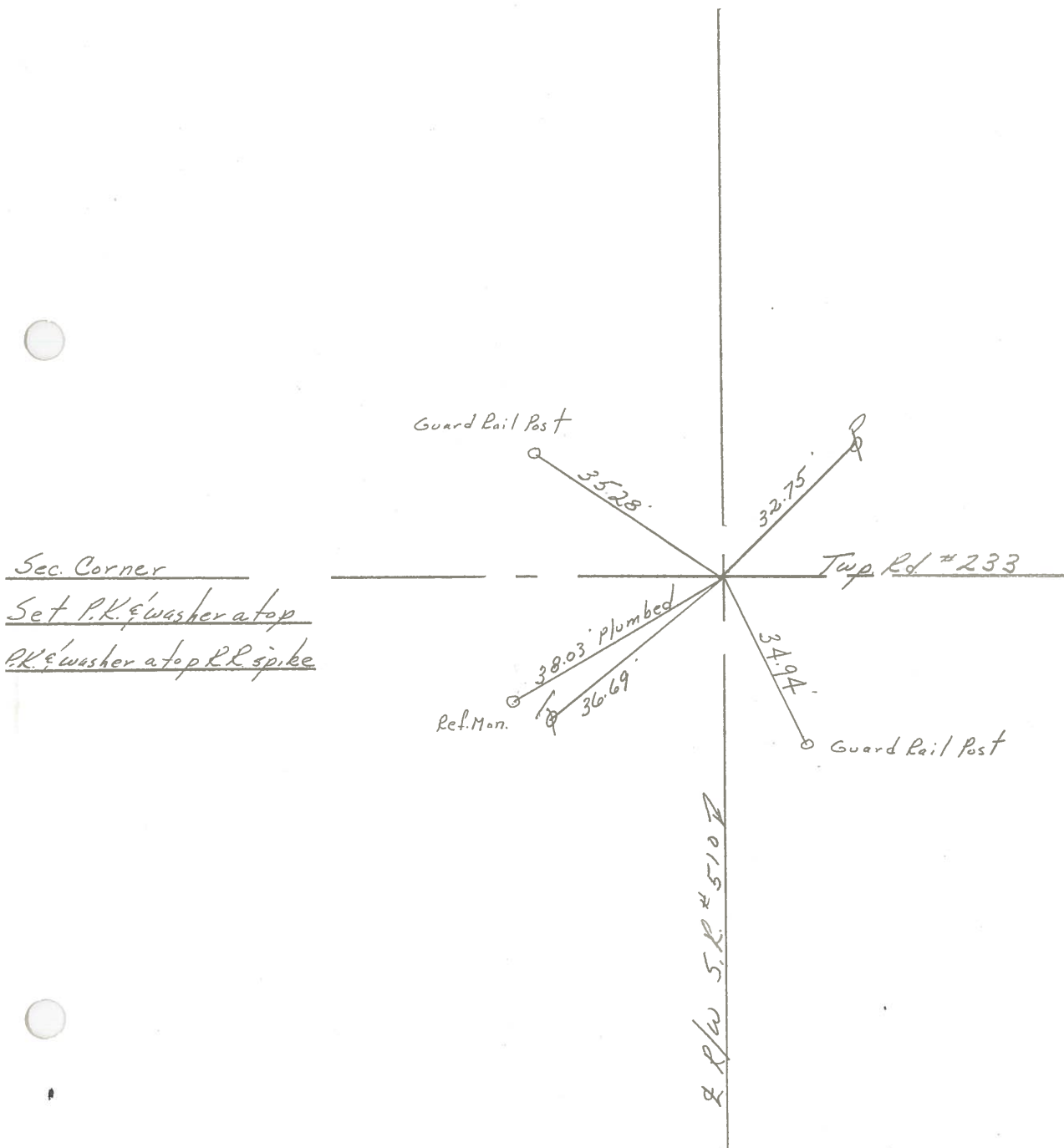
Geyman

Mosser

Barbour

#10

26	25
35	36



PERSONNEL TITLE PERSONNEL TITLE

COUNTY Sandusky DATE Aug. 1972 4-15-71

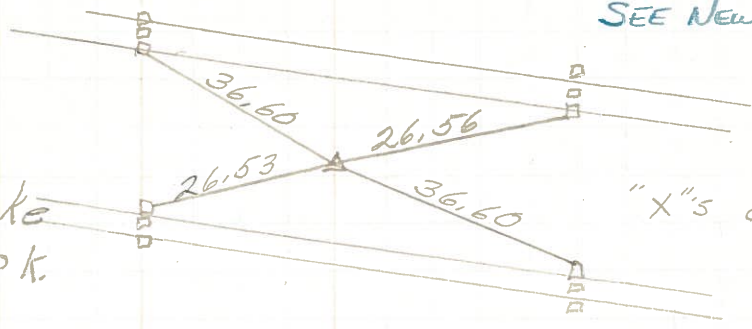
S. R. 510 WEATHER Fair

SEC. U.S. 20 to US 6 TEMP. 50°

DESCRIPTION LEFT CENTER LINE RIGHT JOB NO.

13

Bolt 1" down
E of Ohio Turnpike
Reset small R.R. spk.

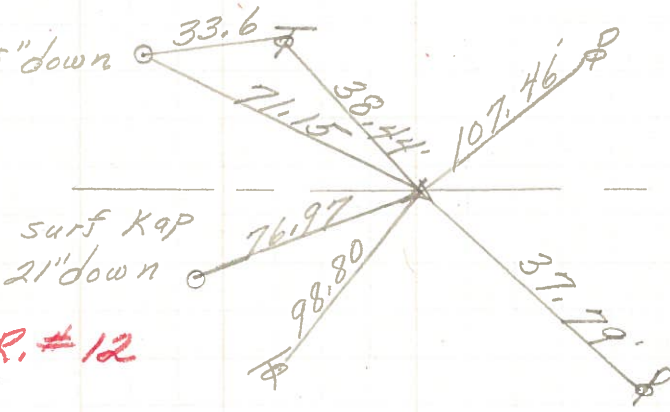


SEE NEW TIES OF 6/10/82

"X"s on Piers

12

surf Kap 25" down
3/4" pipe
2" down

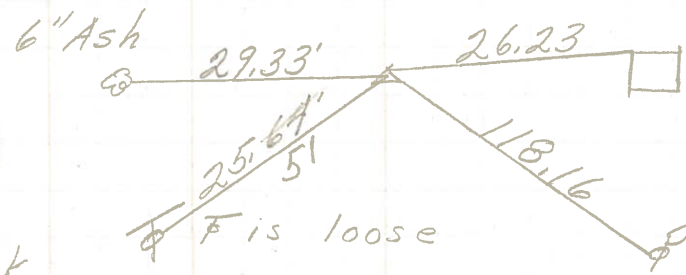


S.R. #12

No 7215 S.R. #12

211+98
212+33.87
R.R. spk.
1/2" down
1' Rt. of E
Reset small spk.

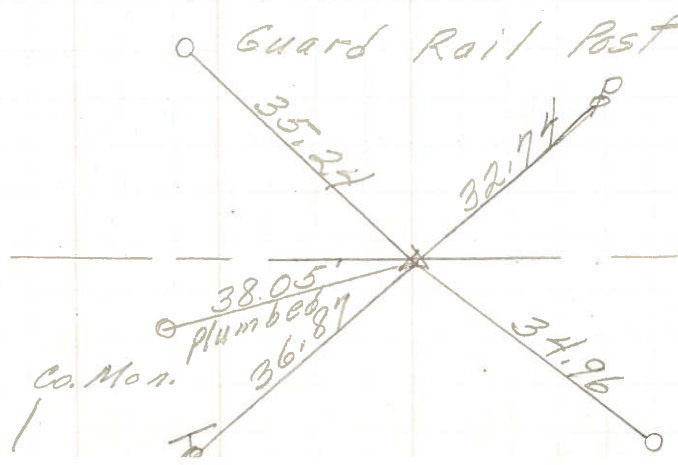
11



SEE NEW TIES OF 9-10-82
conc. post

10

Fd. R.R. spk.
on top
sq. shiner on
the points
Reset PK. Nail



Co. Rd. #233

Conc. rail post

PERSONNEL	TITLE	PERSONNEL	TITLE	COUNTY	DATE
Schneider		Potts		Sandusky	4 2 68
Mosser				S. R.	510
Barbour				WEATHER	F
Redding				SEC. U.S. #206	TEMP. 5
DESCRIPTION	Ties for Control Point				JOB NO.

