

O.D.O.T. DISTRICT 2 SURVEY OFFICE (USE ONLY)

PERSONNEL

REFERENCE NO. 11

SHEET 12 OF 17

NOTES GARRETT

DATE 7/23/20

ROUTE SR 510

H.C. RHOADES

WEATHER CLOUDY

COUNTY SANDUSKY

R.C. MAHLER

TEMP. 77°

TOWNSHIP RILEY

SECTION 26

DWG BY RHOADES PID PAVE TRAIN

T 5 N R 16 E

TYPE MONUMENT MAG SHANK

ON SURFACE - ~~BELOW~~ ON

OFFSET Q PAVEMENT 1.5' ~~±~~ : RT

7.8' TO RT EDGE PAVEMENT

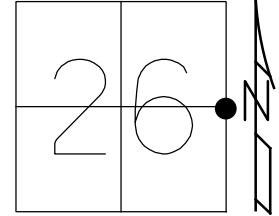
STATION: 212+53

HORZ.DATUM: NAD83 2011

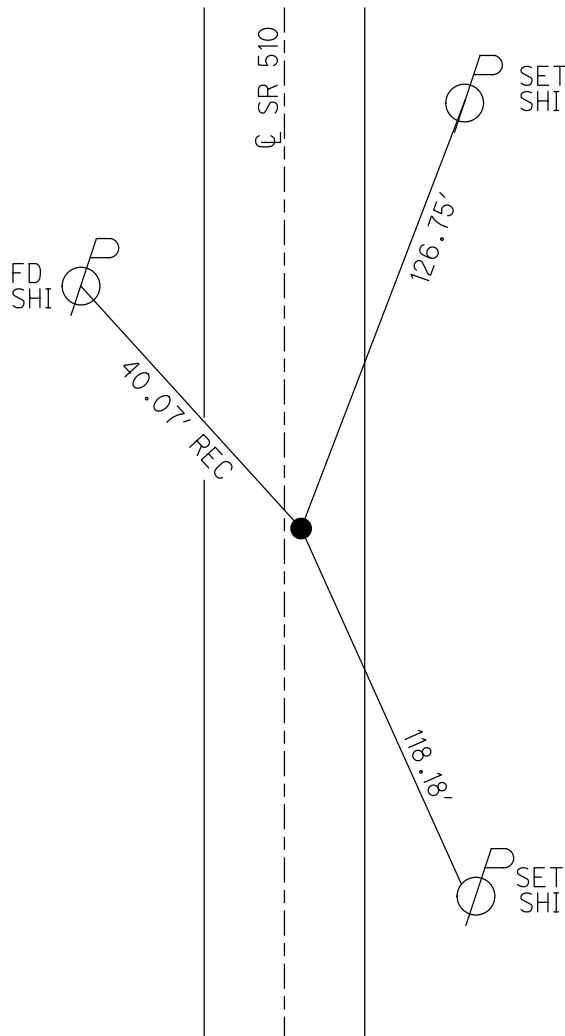
GEOID: NAVD88 2012A

GRID: NORTHING: 619074.015

EASTING: 1838443.626



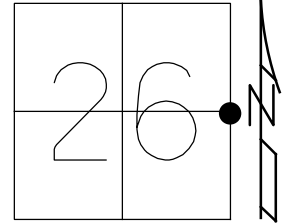
RECORD:  
 STA. 211+98  
 FD R.R.SPIKE  
 1 1/2" DOWN  
 SET SM.SPIKE  
 1971  
 FD P.K./WASHER  
 6/30/04, DCH  
 SET MAG/WASHER  
 9/03/04, DCH  
 FD MAG SHANK  
 REF11  
 9/15/14, JLL  
 D.N.F.  
 7/23/20, JMR



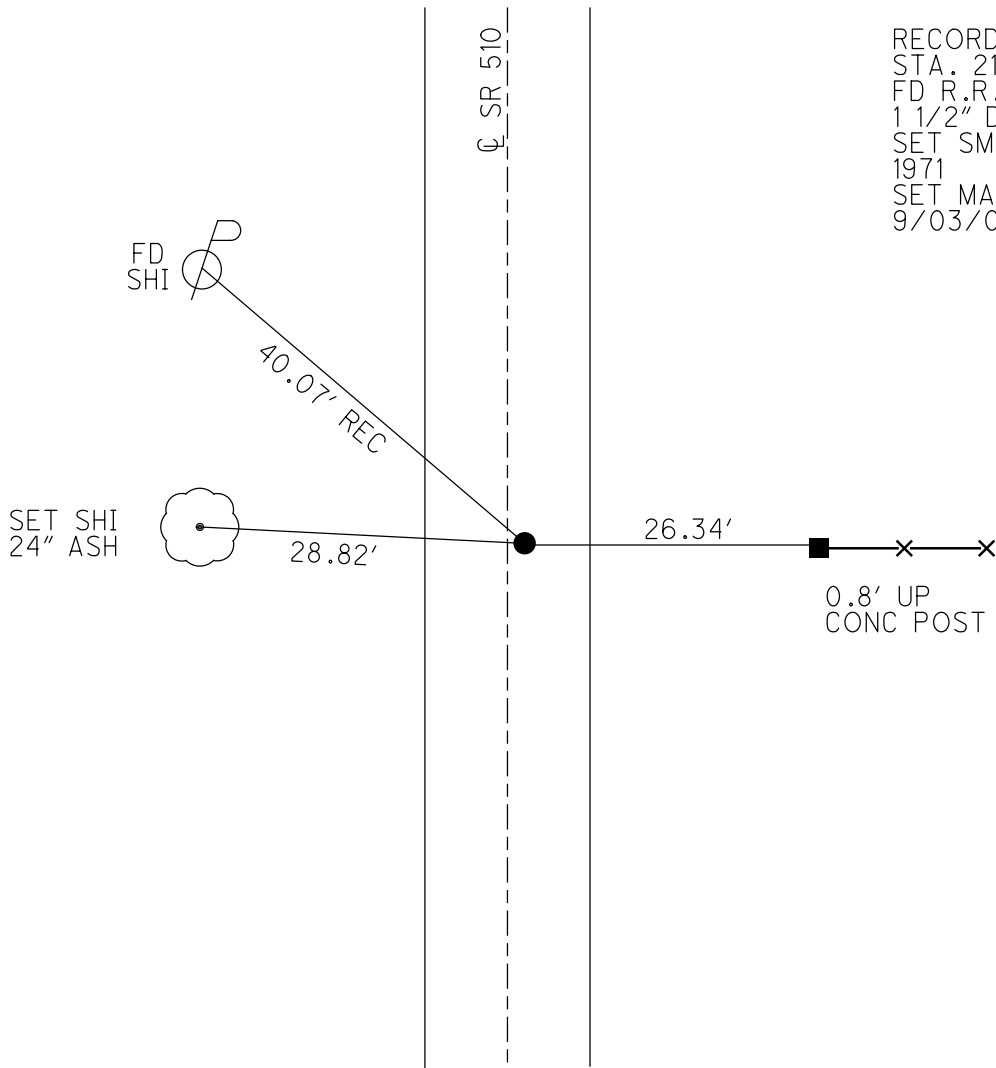
O.D.O.T. DISTRICT 2 SURVEY OFFICE (USE ONLY)

PERSONNEL \_\_\_\_\_ REFERENCE NO. 11 SHEET 12 OF 17  
 NOTES HOMAN DATE 6/30/04 ROUTE SR 510  
 H.C. HUSS WEATHER SUNNY COUNTY SANDUSKY  
 R.C. NUHFER TEMP. 75° TOWNSHIP RILEY  
 \_\_\_\_\_ SECTION 26  
 DWG BY \_\_\_\_\_ PID \_\_\_\_\_ T 5 N R 16 E

TYPE MONUMENT P.K./WASHER  
 ON SURFACE - ~~BELOW~~ ON  
 OFFSET  $\odot$  PAVEMENT 1.5' ~~LT~~ : RT  
7.8' TO RT EDGE PAVEMENT  
 STATION: 212+53  
 HORZ.DATUM: \_\_\_\_\_ GEOID: \_\_\_\_\_  
 GRID: NORTHING: \_\_\_\_\_ EASTING: \_\_\_\_\_



RECORD:  
 STA. 211+98  
 FD R.R.SPIKE  
 1 1/2" DOWN  
 SET SM.SPIKE  
 1971  
 SET MAG/WASHER  
 9/03/04, DCH



O.D.O.T. DISTRICT 2 SURVEY OFFICE

PERSONNEL \_\_\_\_\_

REFERENCE NO. 11

SHEET 12 OF 17

NOTES HOMAN \_\_\_\_\_

DATE 6-30-04

ROUTE SR 510

H.C. HUSS \_\_\_\_\_

WEATHER SUNNY

COUNTY SANDUSKY

R.C. NUHFER \_\_\_\_\_

TEMP. +75°

TOWNSHIP RILEY

SECTION 25 & 26

T 5 N R 16 E

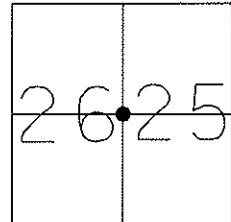
TYPE MONUMENT P.K. & WASHER

ON SURFACE - ~~BELOW~~ \_\_\_\_\_ ON \_\_\_\_\_

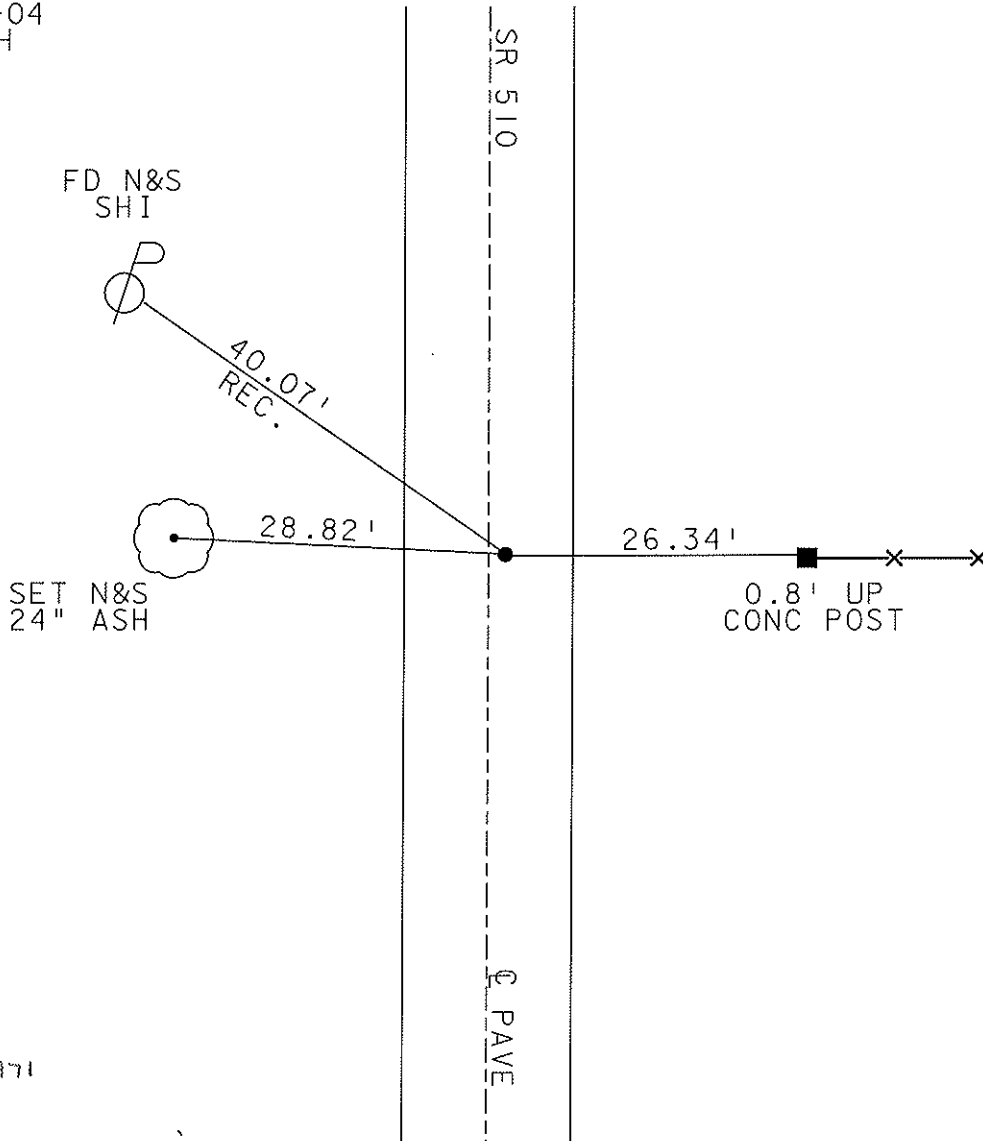
~~1.5'~~ - Q PAV'T - RIGHT 1.5'

7.8' TO RT EDGE PAVEMENT

S.L.M. \_\_\_\_\_ 212+53 \_\_\_\_\_



SET MAG NAIL  
9-3-04  
DCH



RECORD 1971  
211+98

MWE SPIKE - R.A. SPIKE

# O.D.O.T. DISTRICT 2 SURVEY OFFICE

PERSONNEL \_\_\_\_\_

REFERENCE NO. 11

SHEET 10 OF 15

NOTES RIPPLE

H.C. BARBOUR

DATE 8/15/90

ROUTE SR. # 510

R.C. GEYMAN

WEATHER SUNNY

COUNTY SANDUSKY

\_\_\_\_\_

TEMP. 65°

TOWNSHIP Riley

\_\_\_\_\_

SECTION 25 & 26

T5 N R 16 E

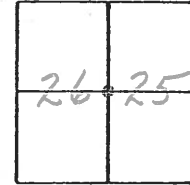
TYPE MONUMENT SET P.K. & WASHER

ON SURFACE - BELOW 4 Top mine spike & Top RR. Spike

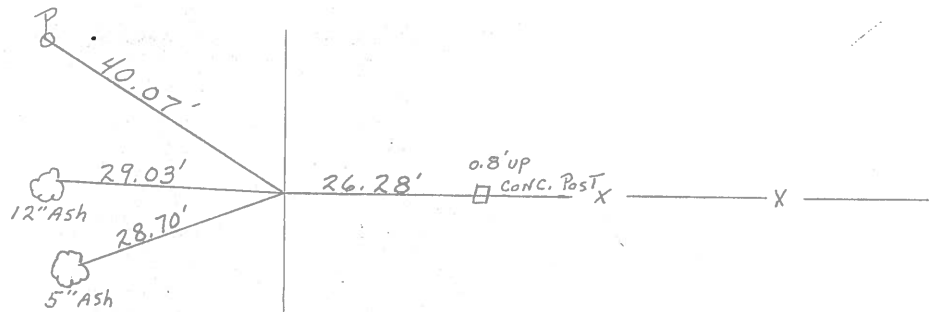
LEFT - CL PAV'T. - RIGHT 1.5' ± RT. CL PAVMT.

\_\_\_\_\_ TO \_\_\_\_\_ EDGE PAVEMENT

S.L.M. \_\_\_\_\_



211+98



CL RW SR # 510

Q.D.O.T. DISTRICT 2 SURVEY OFFICE

Sht. 10 of     

County Sandusky S.R. # 510

Date 9/10/82

Township Riley

Weather sunny

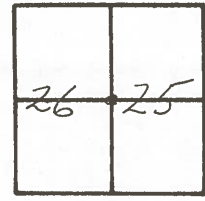
Section 25, E 26

Temp. 75°

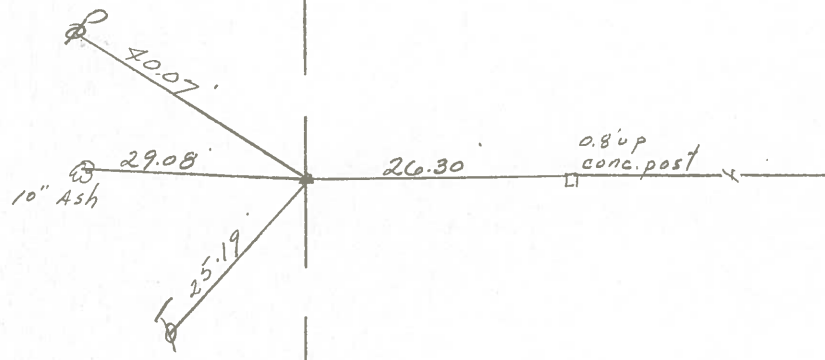
T 5 N, R 16 E

Personnel Croan  
Ripple  
Geyman  
Mosser  
Barbour

#11



211+98  
set P.K. & washer atop mine  
spike atop R.R. spike  
1.5 ± R.R. & Paumit.



E R/W S.R. #510

PERSONNEL TITLE PERSONNEL TITLE

COUNTY Sandusky DATE Aug. 1972  
4-15-71

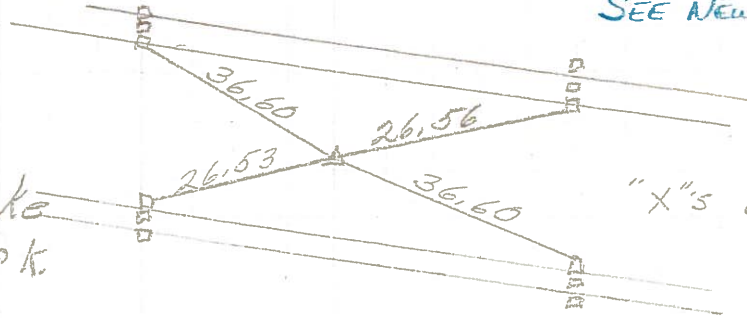
S. R. 510 WEATHER Fair

SEC. U.S. 20 to U.S. 6 TEMP. 50°

DESCRIPTION LEFT CENTER LINE RIGHT JOB NO.

(13)

Bolt 1" down  
E of Ohio Turnpike  
Reset small R.R. spk.

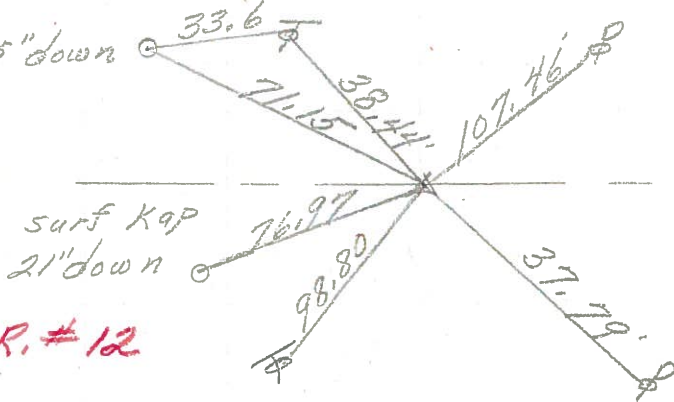


SEE NEW TIES of 6/10/82

"X"s on Piers

(12)

surf Kap 25" down  
3/4" pipe  
2" down

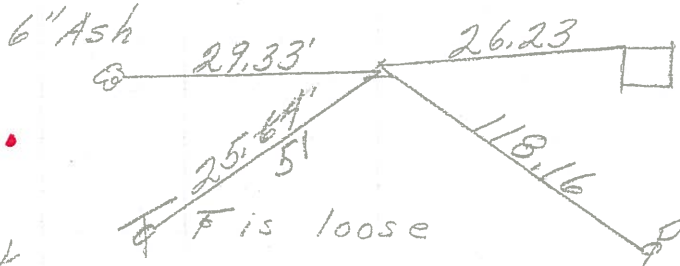


S.R. #12

S.R. #12

~~211+98~~  
~~212+33.87~~  
R.R. spk.  
1 1/2" down  
1' Rt. of E  
Reset small spk.

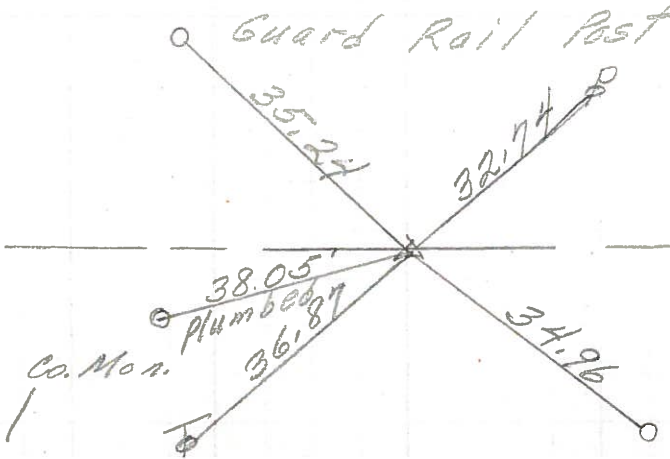
(11)



SEE NEW TIES OF  
9-10-87  
conc. post

(10)

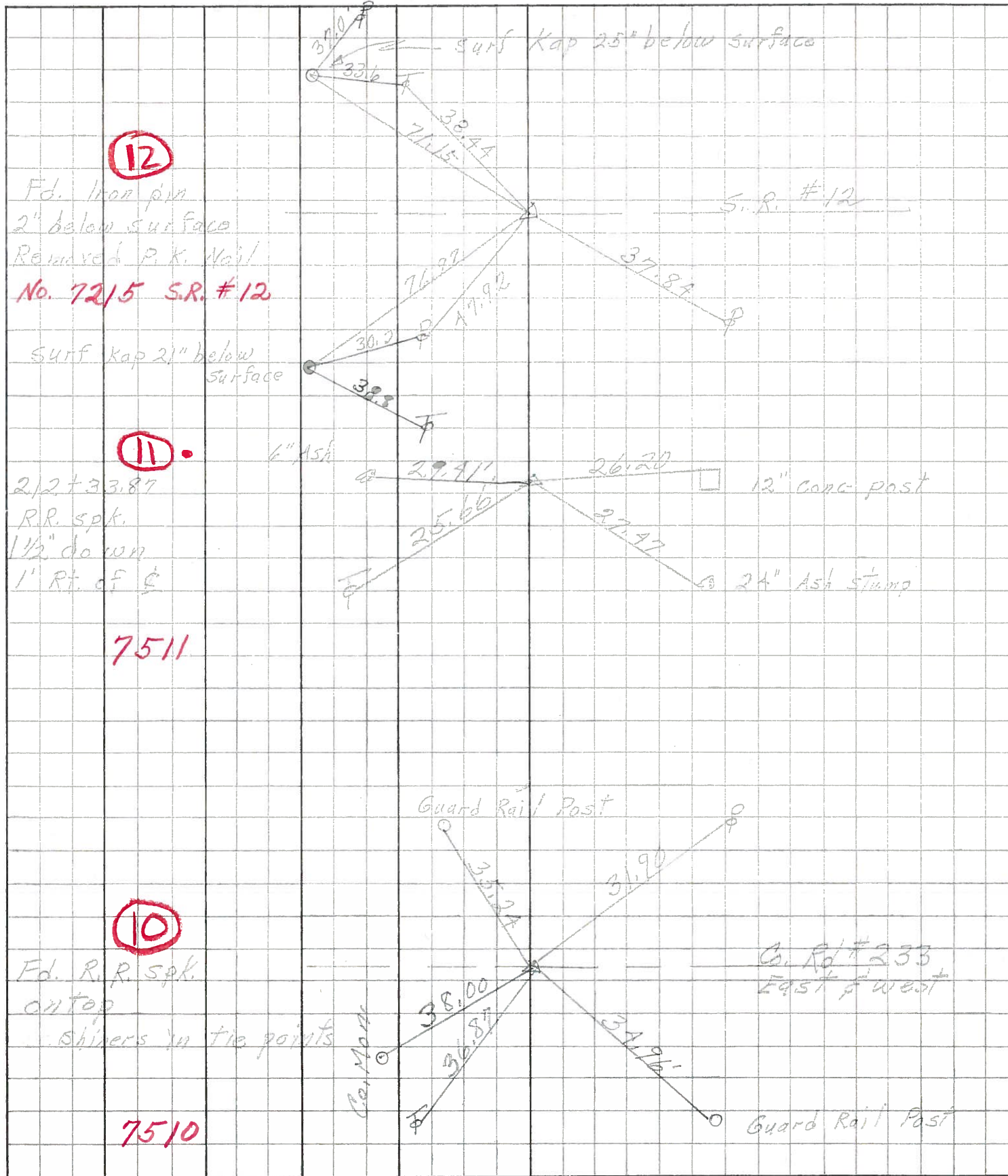
Fd. R.R. spk.  
on top  
sq. shiner on  
tie points  
Reset pk. Nail



Co. Rd. #233

Guard Rail Post

PERSONNEL	TITLE	PERSONNEL	TITLE	COUNTY	DATE	
Schneider		Potts		Sandusky	4-22-68	
Mosser				S. R.	510	
Barbour				WEATHER	Fair	
Redding				SEC.	U.S.#20 to U.S.#6	
DESCRIPTION	Ties for Control Points				TEMP.	65°
	LEFT	CENTER LINE	RIGHT	JOB NO.		



**12**

Fd. Iron pin  
2" below surface  
Removed P.K. Nail  
No. 7215 S.R. #12

**11**

2 1/2 + 33.87  
R.R. spk.  
1 1/2" down  
1' Rt. of S

**7511**

**10**

Fd. R.R. spk.  
on top  
Shiners in tie points

**7510**