

O.D.O.T. DISTRICT 2 SURVEY OFFICE (USE ONLY)

PERSONNEL

REFERENCE NO. 12

SHEET 13 OF 17

NOTES GARRETT

DATE 7/23/20

ROUTE SR 510

H.C. RHOADES

WEATHER CLOUDY

COUNTY SANDUSKY

R.C. MAHLER

TEMP. 77°

TOWNSHIP RILEY

SECTION 26

DWG BY RHOADES

PID PAVE TRAIN

T 5 N R 16 E

TYPE MONUMENT MAG/WASHER

ON SURFACE - ~~BELOW~~ ON

OFFSET CL PAVEMENT 2.5' LT : RT

10.0' TO LT EDGE PAVEMENT

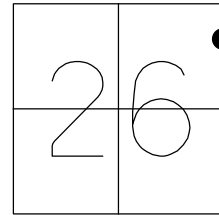
STATION: 227+81

HORZ.DATUM: NAD83 2011

GEOID: NAVD88 2012A

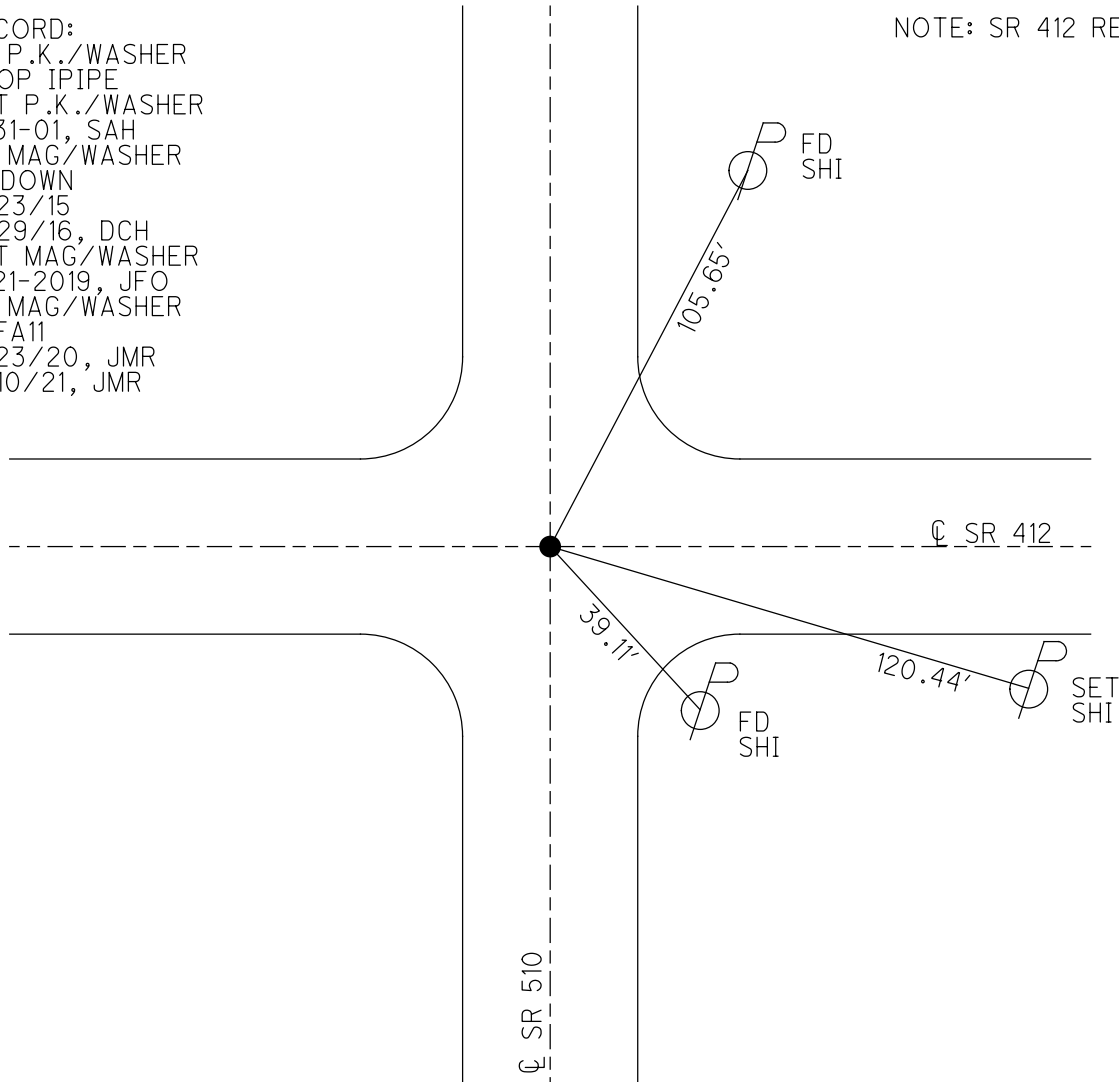
GRID: NORTHING: 620593.287

EASTING: 1838476.137



RECORD:
 FD P.K./WASHER
 ATOP IPIPE
 SET P.K./WASHER
 8-31-01, SAH
 FD MAG/WASHER
 2" DOWN
 6/23/15
 11/29/16, DCH
 SET MAG/WASHER
 8-21-2019, JFO
 FD MAG/WASHER
 REFA11
 7/23/20, JMR
 3/10/21, JMR

NOTE: SR 412 REF 11



O.D.O.T. DISTRICT 2 SURVEY OFFICE (USE ONLY)

PERSONNEL _____ REFERENCE NO. 11 SHEET 13 OF 17

NOTES AUBLE DATE 5/1/18 ROUTE SR 510
 H.C. LEU WEATHER SUNNY, BREEZY COUNTY SANDUSKY
 R.C. AUBLE TEMP. 67° TOWNSHIP RILEY
 SECTION 26

DWG BY NIESE PID 95765 T 5 N R 16 E

TYPE MONUMENT MAG/WASHER

ON SURFACE - ~~BELOW~~ ON

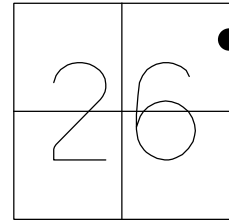
OFFSET \varnothing PAVEMENT 2.5' ~~LT~~ : RT

10.0' TO LT EDGE PAVEMENT

STATION: 227+81

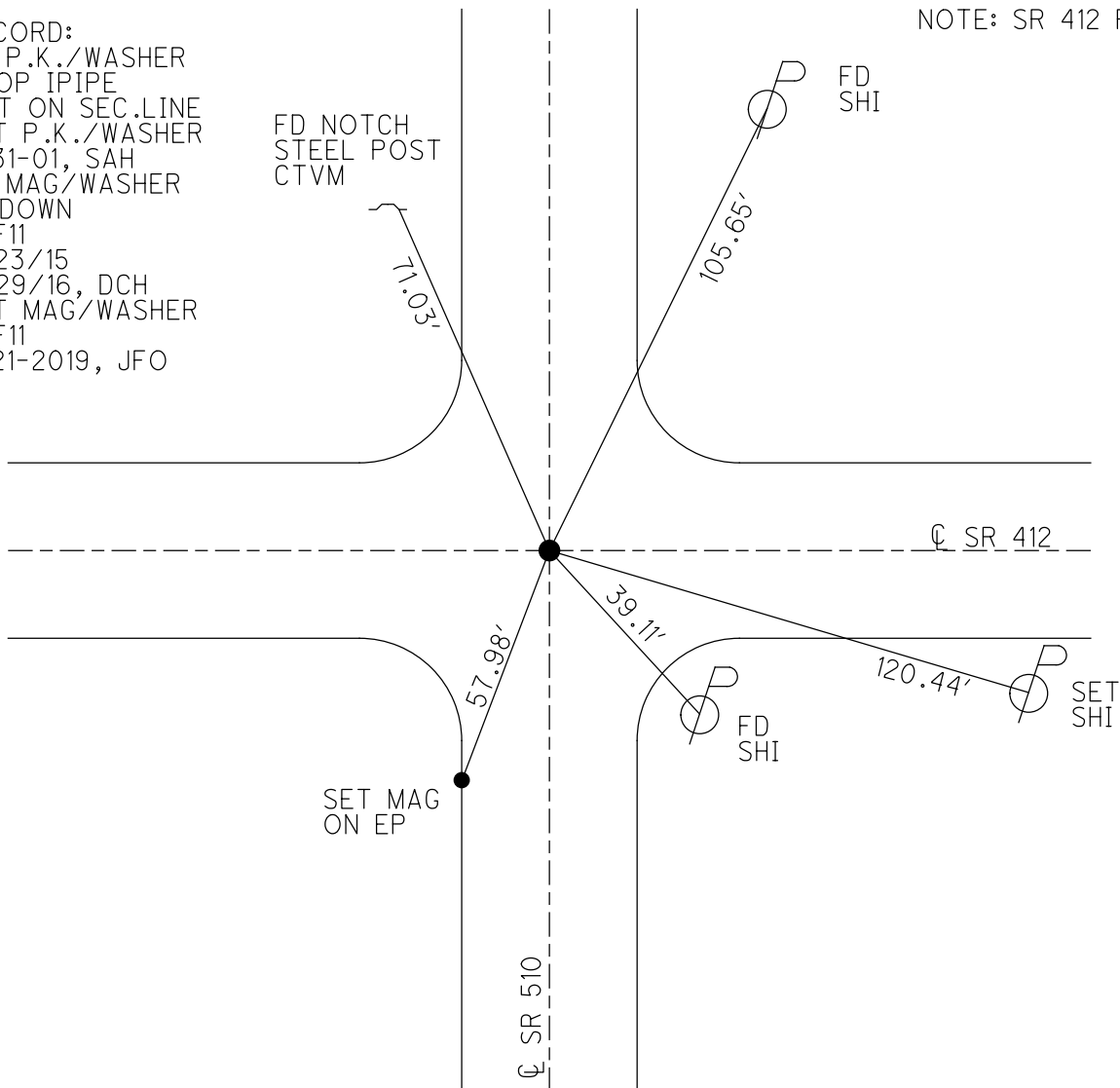
HORZ. DATUM: NAD83(2011) GEOID: 2012A

GRID: NORTHING: 620593.326 EASTING: 1838476.101



RECORD:
 FD P.K./WASHER
 ATOP IPIPE
 NOT ON SEC.LINE
 SET P.K./WASHER
 8-31-01, SAH
 FD MAG/WASHER
 2" DOWN
 REF11
 6/23/15
 11/29/16, DCH
 SET MAG/WASHER
 REF11
 8-21-2019, JFO

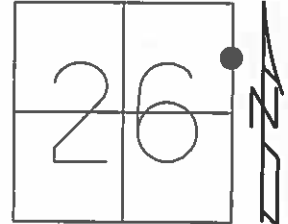
NOTE: SR 412 REF 11



O.D.O.T. DISTRICT 2 SURVEY OFFICE (USE ONLY)

PERSONNEL _____ REFERENCE NO. 12 SHEET 13 OF 17
 NOTES HOMAN DATE 6/30/04 ROUTE SR 510
 H.C. HUSS WEATHER SUNNY COUNTY SANDUSKY
 R.C. NUHFER TEMP. 80° TOWNSHIP RILEY
 _____ SECTION 26
 _____ T 5 N R 16 E

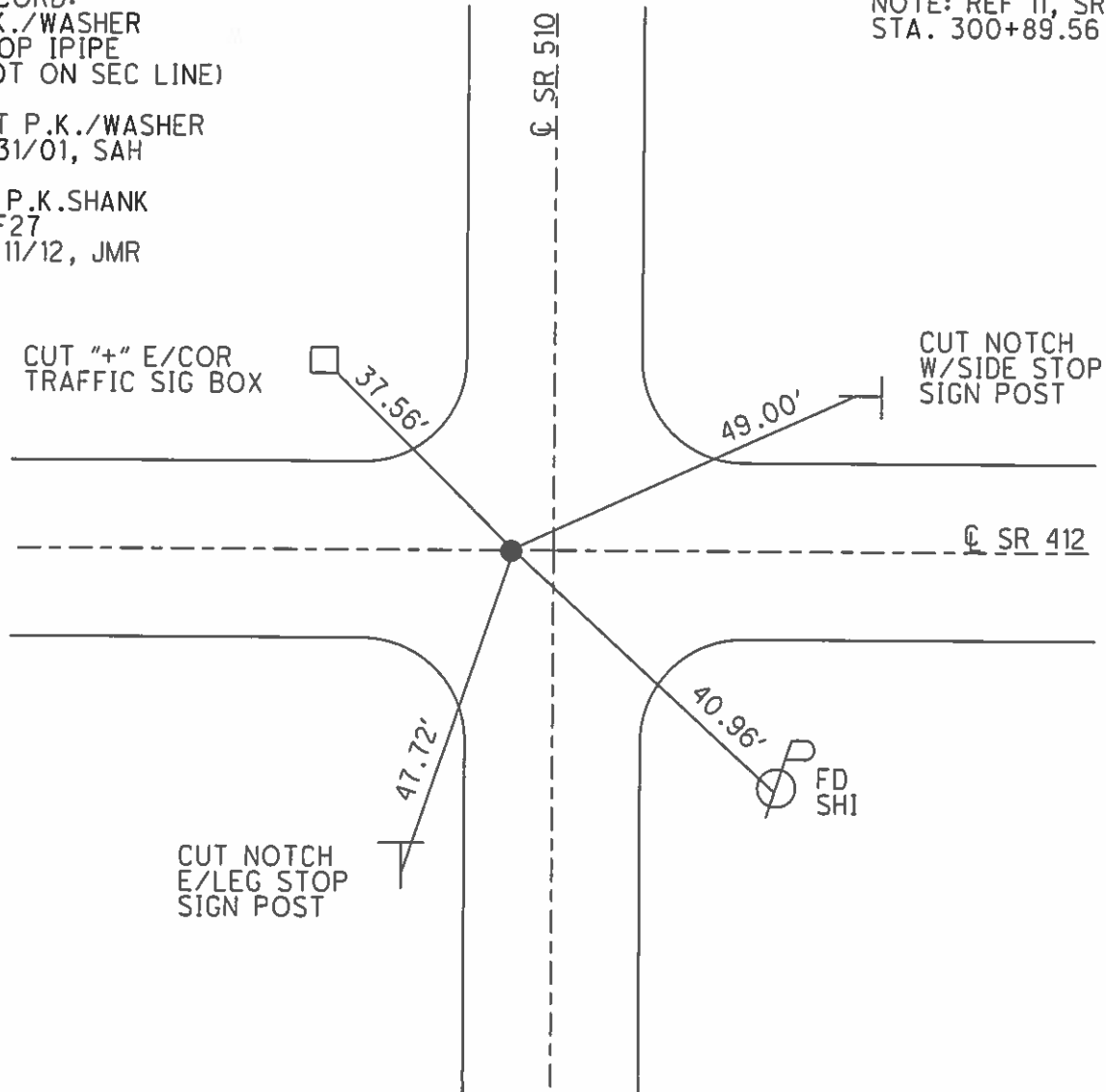
TYPE MONUMENT P.K./WASHER
 ON SURFACE - ~~BELOW~~ ON _____
 LEFT - ☉ PAV'T - ~~RIGHT~~ 4', ON ☉ SR 412
10.0' TO LT EDGE PAVEMENT
 S.L.M. 227+81



Grid: Northing: 620596.154 Easting: 1838476.089

RECORD:
 P.K./WASHER
 ATOP IPIPE
 (NOT ON SEC LINE)
 SET P.K./WASHER
 8/31/01, SAH
 FD P.K.SHANK
 REF27
 12/11/12, JMR

NOTE: REF 11, SR 412
 STA. 300+89.56



O.D.O.T. DISTRICT 2 SURVEY OFFICE

PERSONNEL _____

REFERENCE NO. 12

SHEET 13 OF 17

NOTES HOMAN _____

DATE 6-30-04

ROUTE SR 510

H.C. HUSS

WEATHER SUNNY

COUNTY SANDUSKY

R.C. NUHFER

TEMP. +80°

TOWNSHIP RILEY

SECTION 25 & 26

T 5 N R 16 E

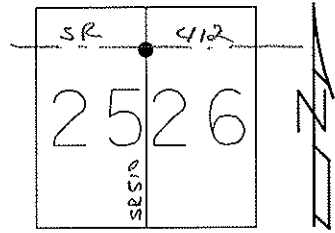
TYPE MONUMENT P.K. & WASHER

ON SURFACE ~~BELOW~~ ON

LEFT - Q PAV'T - ~~RIGHT~~ 4'

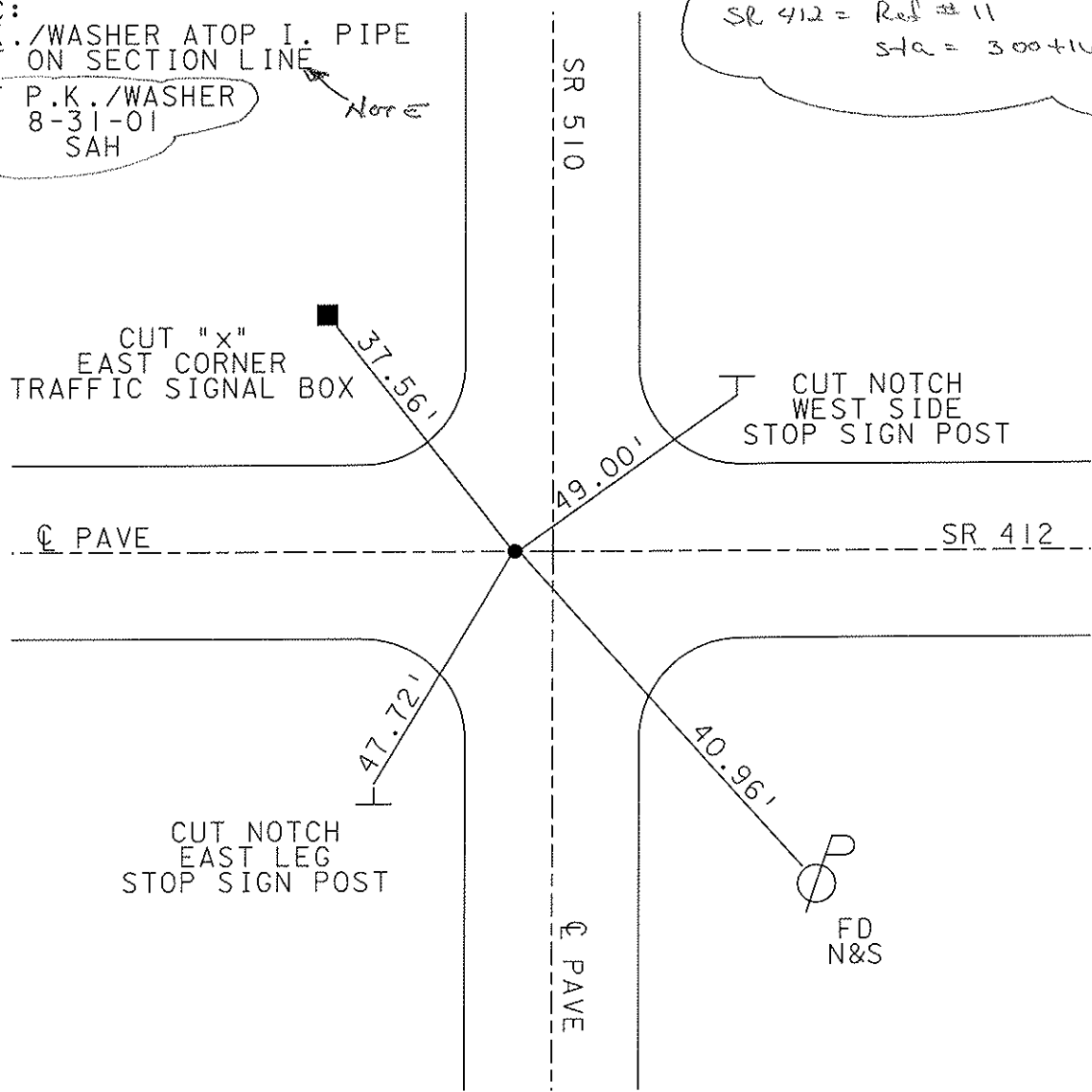
TO EDGE PAVEMENT

S.L.M. 227+81



REC:
P.K./WASHER ATOP I. PIPE
NOT ON SECTION LINE
SET P.K./WASHER
8-31-01
SAH

SR 412 = Ref # 11
Sta = 300+16



O.D.O.T. DISTRICT 2 SURVEY OFFICE

PERSONNEL

REFERENCE NO. ~~XI~~

SHEET _____ OF _____

1205SR530

NOTESTED Rousos

H.C. VAN DUSEN

DATE 7-5-01

ROUTE 412

R.C. ADAM B.

WEATHER SUNNY

COUNTY SANDUSKY

TEMP. +75°F

TOWNSHIP RILEY

SECTION 25 OR 26?

T5 N R 16 E

TYPE MONUMENT PK & WASHER

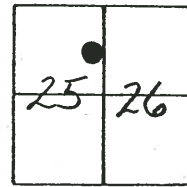
~~ON SURFACE~~ - BELOW 2"

~~EEPT~~ - & PAV'T. - ~~EEPT~~ YES

10.0' TO LT. EDGE PAVEMENT

S.L.M. 300+16

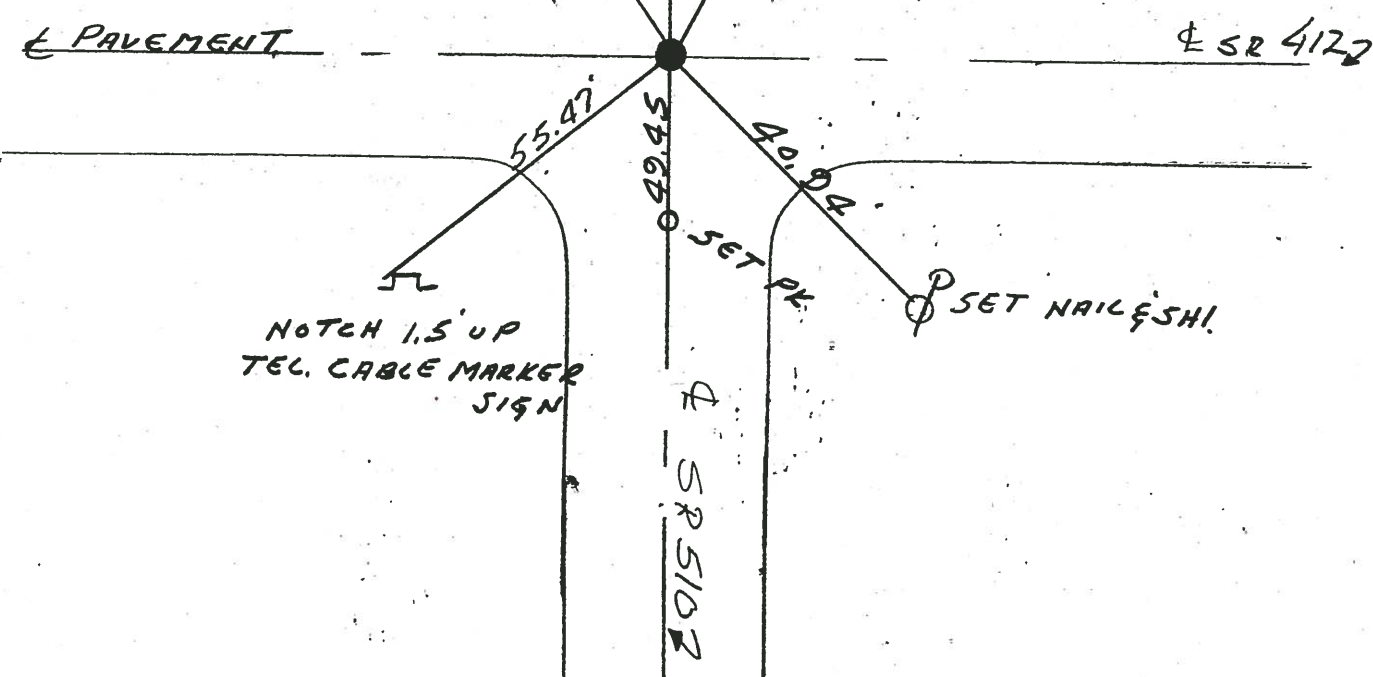
12



REC!
 PK & WASHER
 ATOP I. PIPES -
 NOT ON SECTION LINE

STEEL POST FOR
 UNDERGROUND
 CABLE MARKER
 NOTCH 1.0' UP
 OUTSIDE E. LEG
 OF 2 POST STOP SIGN

SET PK/WASHER
 8-31-01
 J.A.H.



PERSONNEL TITLE PERSONNEL TITLE

COUNTY Sandusky DATE Aug. 1972 4-15-71

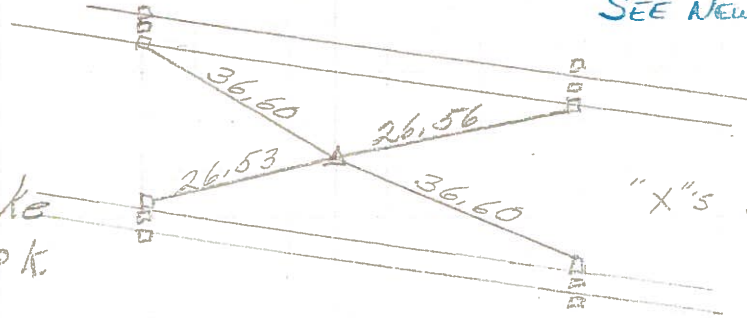
S. R. 510 WEATHER Fair

SEC. U.S. 20 to U.S. 6 TEMP. 50°

DESCRIPTION LEFT CENTER LINE RIGHT JOB NO.

13

Bolt 1" down
E of Ohio Turnpike
Reset small R.R. spk

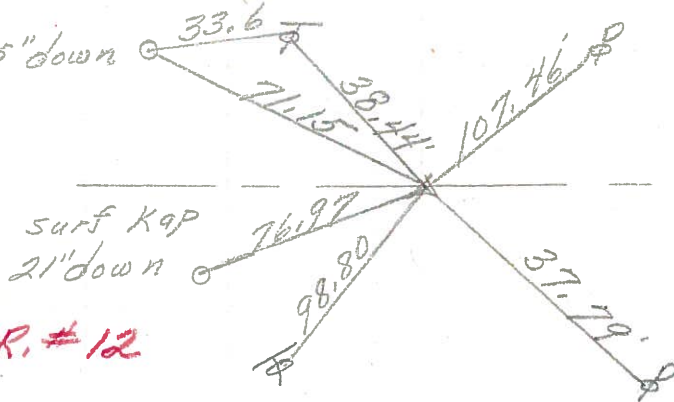


SEE NEW TIES of 6/10/82

"X"s on Piers

12

surf Kap 25" down
3/4" pipe
2" down

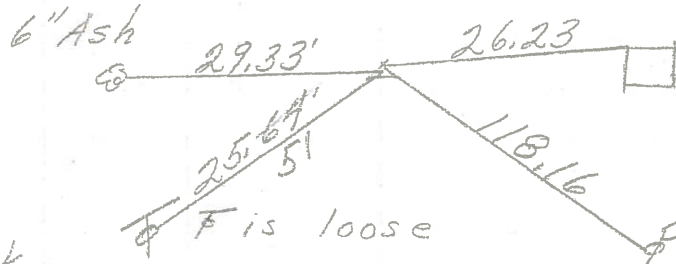


S.R. #12

S.R. #12

211+98
~~212+33.87~~
R.R. spk.
1 1/2" down
1' Rt. of E
Reset small spk.

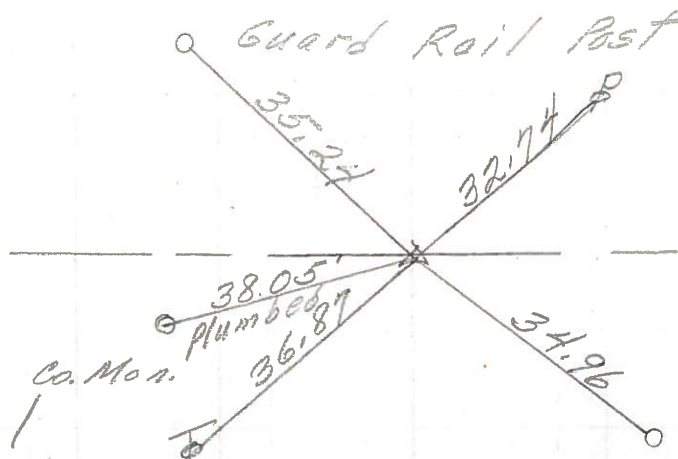
11



SEE NEW TIES OF 9-10-87
CONC. POST

10

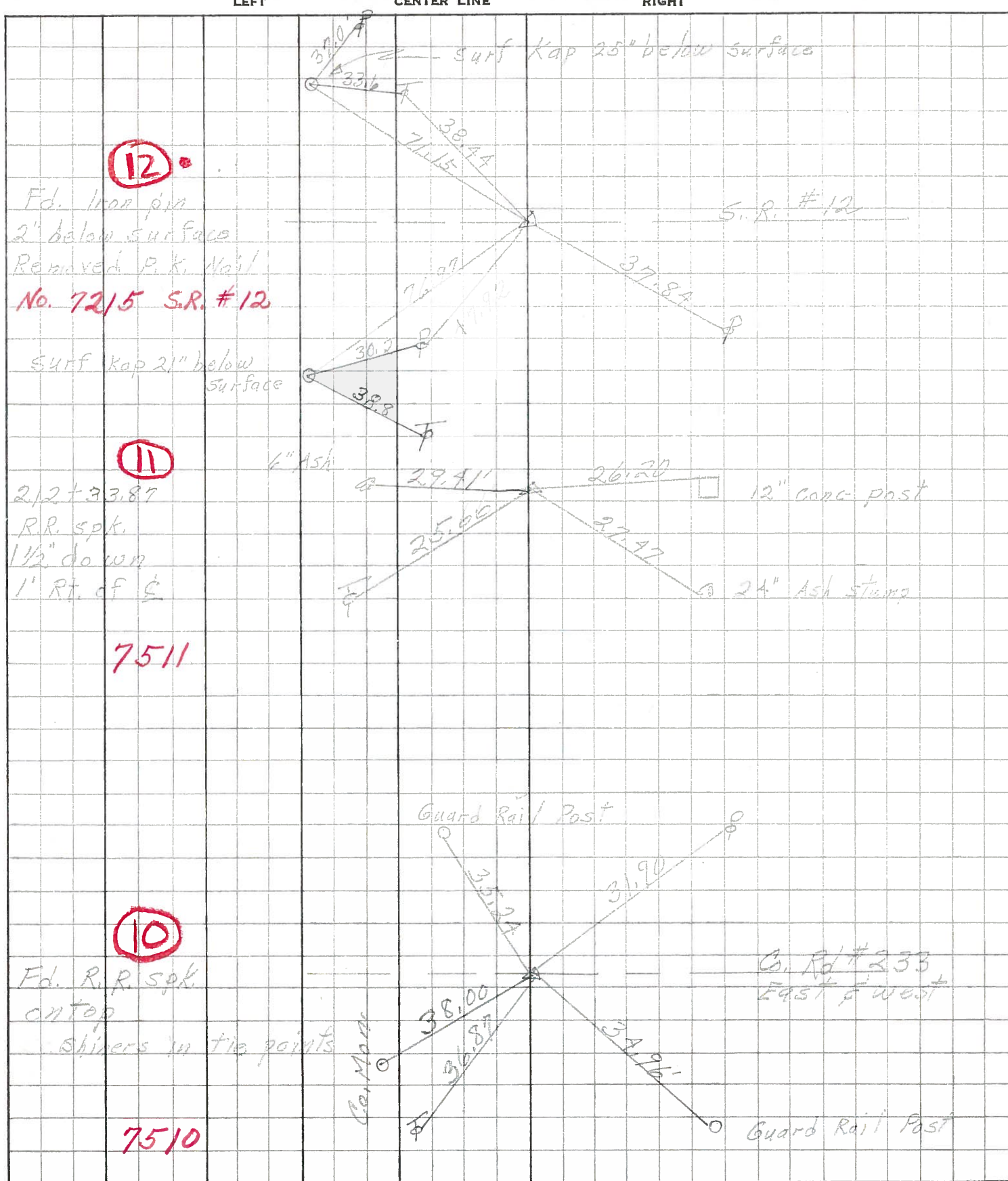
Fd. R.R. spk.
on top
sq. shiner on
tie points
Reset PK Nail



Co. Rd. #233

Guard Rail Post

PERSONNEL	TITLE	PERSONNEL	TITLE	COUNTY	DATE
<u>Schneider</u>		<u>Potts</u>		<u>Sandusky</u>	<u>4-22-68</u>
<u>Mosser</u>				S. R.	WEATHER
<u>Barbour</u>				<u>510</u>	<u>Fair</u>
<u>Redding</u>				SEC. U.S. #20 to U.S. #6	TEMP.
					<u>65°</u>
DESCRIPTION	<u>Ties for Control Points</u>			JOB NO.	



12

11

10

No. 7215 S.R. #12

2 1/2 + 33.87
R.R. spk.
1 1/2" down
1' Rt. of S

7511

Fd. R.R. spk.
on top
Shivers in tie points

7510