

O.D.O.T. DISTRICT 2 SURVEY OFFICE (USE ONLY)

PERSONNEL

REFERENCE NO. 13

SHEET 14 OF 18

NOTES RHOADES DATE 7/20/22

H.C. RHOADES WEATHER HUMID

R.C. WHITAKER TEMP. 84°

ROUTE SR 510

COUNTY SANDUSKY

TOWNSHIP RILEY

SECTION 23

DWG BY WHITAKER PID PVTRN

T 5 N R 16 E

TYPE MONUMENT MAG/WASHER

ON SURFACE - ~~BELOW~~ ON

OFFSET Q PAVEMENT 1' ~~±~~ : RT

8.5' TO RT EDGE PAVEMENT

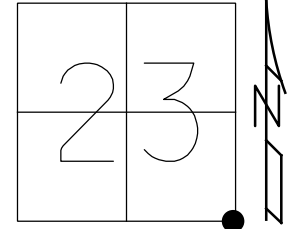
STATION: 240+13

HORZ.DATUM: \_\_\_\_\_

GEOID: \_\_\_\_\_

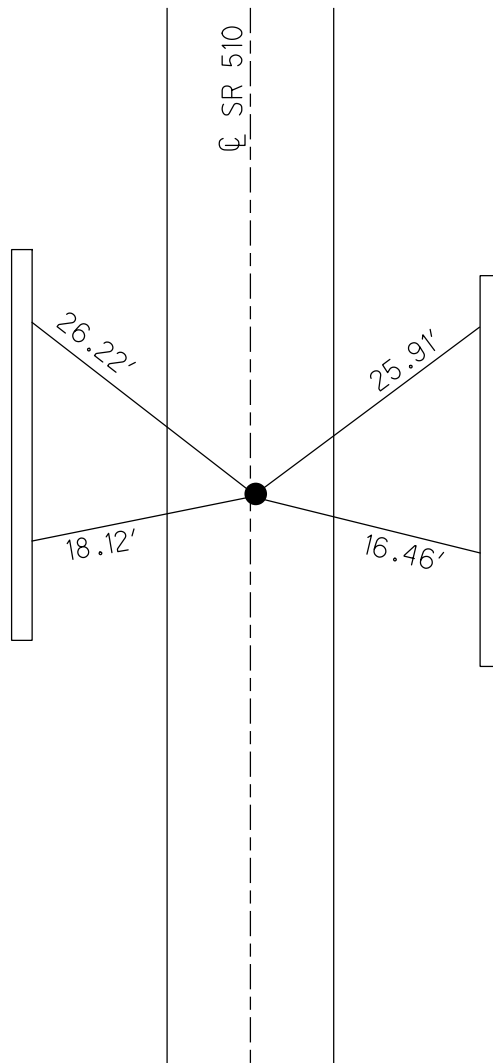
GRID: NORTHING: \_\_\_\_\_

EASTING: \_\_\_\_\_



RECORD:  
 FD BOLT  
 1" DOWN  
 SET SM.R.R.SPIKE  
 1971  
 FD P.K./WASHER  
 6/30/04, DCH  
 SET MAG NAIL  
 10/08/04, DCH  
 D.N.F.  
 7/23/20  
 3/10/21, JMR  
 SET MAG/WASHER  
 7/20/22, JMR

POINT UNDER BRIDGE  
 NO GPS

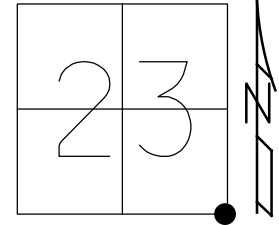


CUT "X"s ON  
 BARRIER WALL  
 UNDER TURNPIKE  
 OPPOSITE PIERS

O.D.O.T. DISTRICT 2 SURVEY OFFICE (USE ONLY)

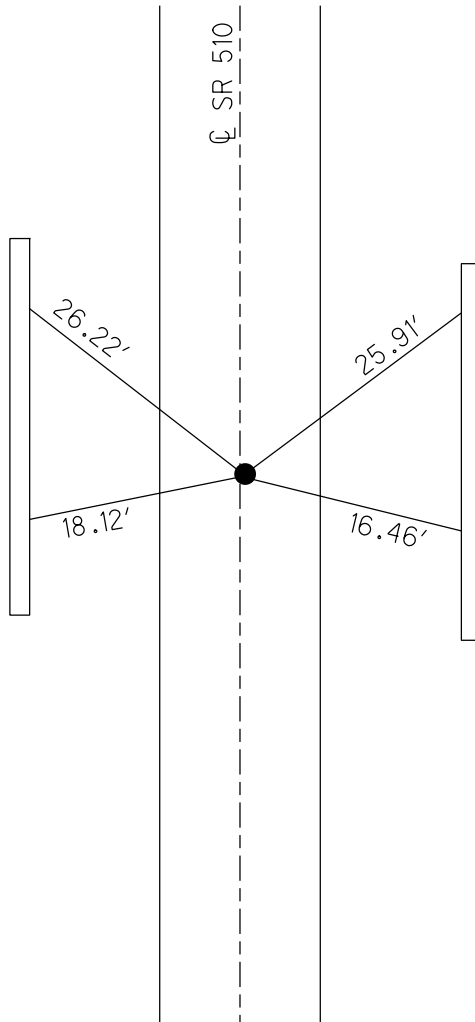
PERSONNEL \_\_\_\_\_ REFERENCE NO. 13 SHEET 14 OF 17  
 NOTES GARRETT DATE 7/23/20 ROUTE SR 510  
 H.C. RHOADES WEATHER CLOUDY COUNTY SANDUSKY  
 R.C. MAHLER TEMP. 77° TOWNSHIP RILEY  
 DWG BY RHOADES PID PAVE TRAIN SECTION 23  
 T 5 N R 16 E

TYPE MONUMENT P.K./WASHER  
 ON SURFACE - ~~BELOW~~ ON  
 OFFSET  $\text{C}$  PAVEMENT 1' ~~RT~~ : RT  
8.5' TO RT EDGE PAVEMENT  
 STATION: 240+13



HORIZ.DATUM: NAD83 2011 GEOID: NAVD88 2012A  
 GRID: NORTHING: \_\_\_\_\_ EASTING: \_\_\_\_\_

RECORD:  
 FD BOLT  
 1" DOWN  
 SET SM.R.R.SPIKE  
 1971  
 FD P.K./WASHER  
 6/30/04, DCH  
 SET MAG NAIL  
 10/08/04, DCH  
 D.N.F.  
 7/23/20, JMR



CUT "X"s ON  
 BARRIER WALL  
 UNDER TURNPIKE  
 OPPOSITE PIERS

O.D.O.T. DISTRICT 2 SURVEY OFFICE (USE ONLY)

PERSONNEL \_\_\_\_\_

REFERENCE NO. 13

SHEET 14 OF 17

NOTES HOMAN

DATE 6/30/04

ROUTE SR 510

H.C. HUSS

WEATHER SUNNY

COUNTY SANDUSKY

R.C. NUHFER

TEMP. 80°

TOWNSHIP RILEY

DWG BY \_\_\_\_\_ PID \_\_\_\_\_

SECTION 23

T 5 N R 16 E

TYPE MONUMENT P.K./WASHER

ON SURFACE - ~~BELOW~~ ON

OFFSET Q PAVEMENT 1' ~~±~~ : RT

8.5' TO RT EDGE PAVEMENT

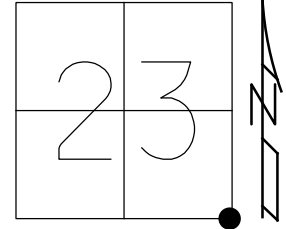
STATION: 240+13

HORIZ.DATUM: \_\_\_\_\_

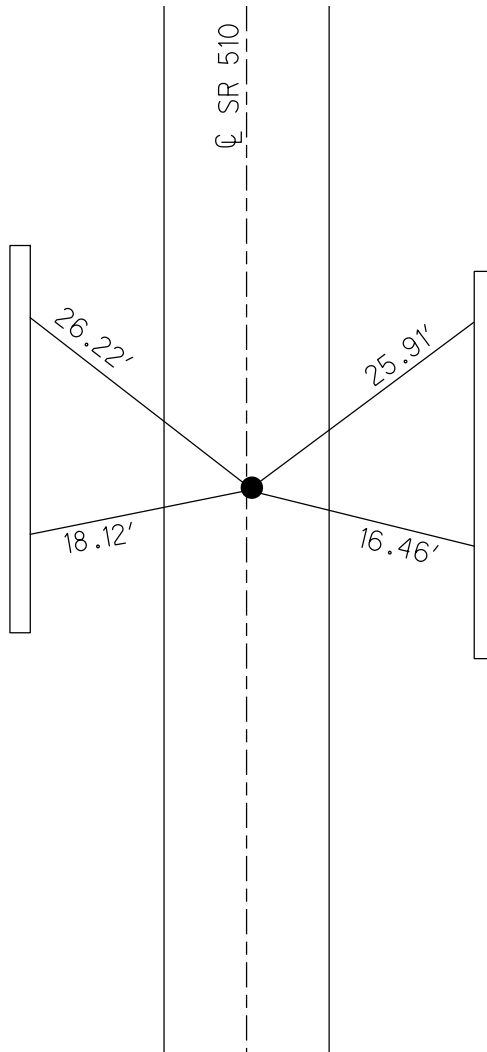
GEOID: \_\_\_\_\_

GRID: NORTHING: \_\_\_\_\_

EASTING: \_\_\_\_\_



RECORD:  
FD BOLT  
1" DOWN  
SET SM.R.R.SPIKE  
1971  
SET MAG NAIL  
10/08/04, DCH



CUT "X"s ON  
BARRIER WALL  
UNDER TURNPIKE  
OPPOSITE PIERS

O.D.O.T. DISTRICT 2 SURVEY OFFICE

PERSONNEL \_\_\_\_\_

REFERENCE NO. 13

SHEET 14 OF 17

NOTES HOMAN \_\_\_\_\_

DATE 6-30-04

ROUTE SR 510

H.C. HUSS

WEATHER SUNNY

COUNTY SANDUSKY

R.C. NUHFER

TEMP. +80°

TOWNSHIP RILEY

SECTION 26

T 5 N R 16 E

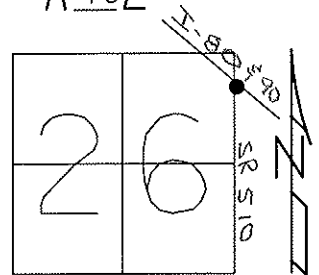
TYPE MONUMENT P.K & WASHER

ON SURFACE ~~-BELOW~~ ON

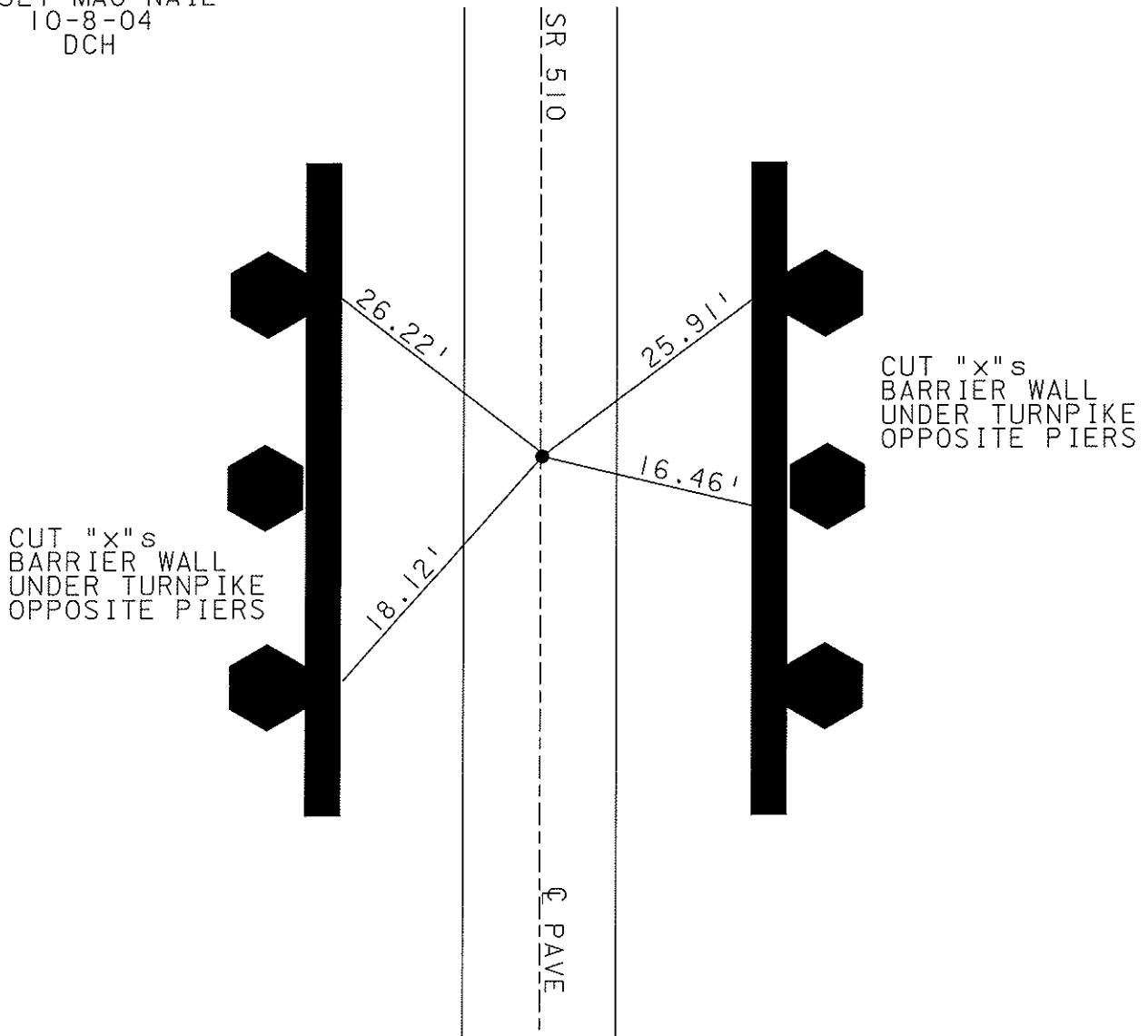
~~LEFT - Q PAVT - RIGHT~~ 1'

8.5' TO RT EDGE PAVEMENT

S.L.M. 240+13



RESET MAG NAIL  
10-8-04  
DCH



O.D.O.T. DISTRICT 2 SURVEY OFFICE

PERSONNEL

REFERENCE NO. 13

SHEET 12 OF 15

NOTES Ripple

H.C. BARBOUR

DATE 8/15/90

ROUTE SR#510

R.C. Geyman

WEATHER SUNNY

COUNTY SANDUSKY

\_\_\_\_\_

TEMP. 70°

TOWNSHIP Riley

\_\_\_\_\_

SECTION #26

T.5 N R.16 E

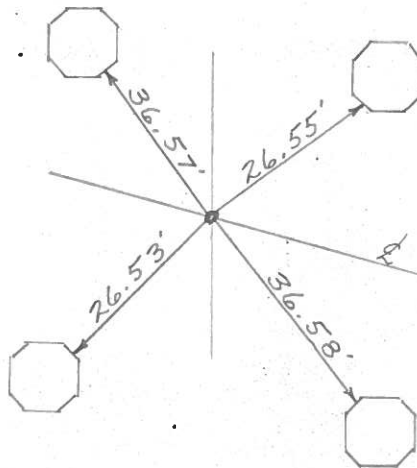
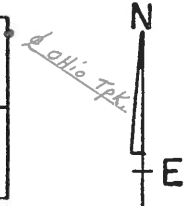
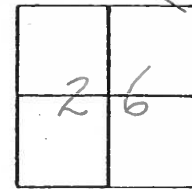
TYPE MONUMENT Set PK & Washer

ON SURFACE - BELOW mine Spike A Top Iron Bolt

LEFT - ☉ PAV'T. - RIGHT ☉

\_\_\_\_\_ TO \_\_\_\_\_ EDGE PAVEMENT

S.L.M. \_\_\_\_\_



'cut on pier columns

& R/W S.R. #510

County Sandusky S.R. #510

Date 6/10/82

Township Riley

Weather sunny

Section #26

Temp. 75°

T5N, R16E

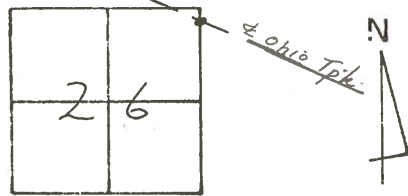
Personnel Cronin

Ripple

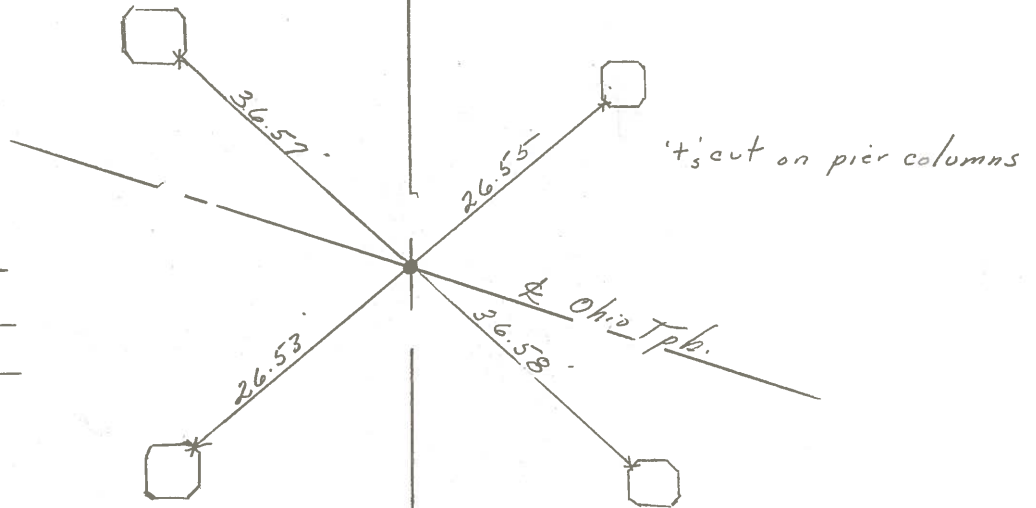
Mosser

Barbour

#13



①



Mine spike was set a top I.  
bolt in 1971 - Reset P.K. 6'  
Washer 6/28/79

S.R. # 510

Aug. 1972

PERSONNEL TITLE PERSONNEL TITLE

COUNTY Sandusky DATE 4-15-71

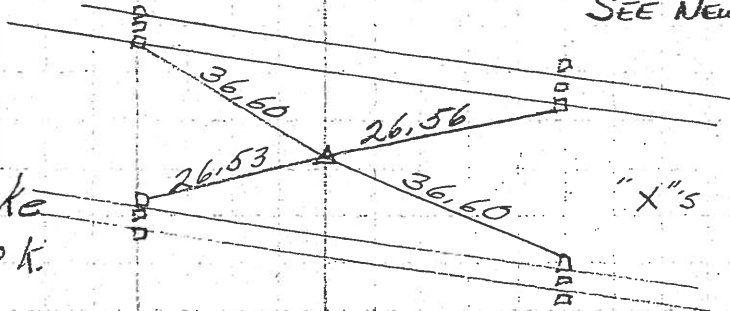
S. R. 510 WEATHER Fair

SEC. U.S. 20 to U.S. 6 TEMP 50°

DESCRIPTION LEFT CENTER LINE RIGHT JOB NO.

13

Bolt 1" down  
of Ohio Turnpike  
Reset small R.R. spk.

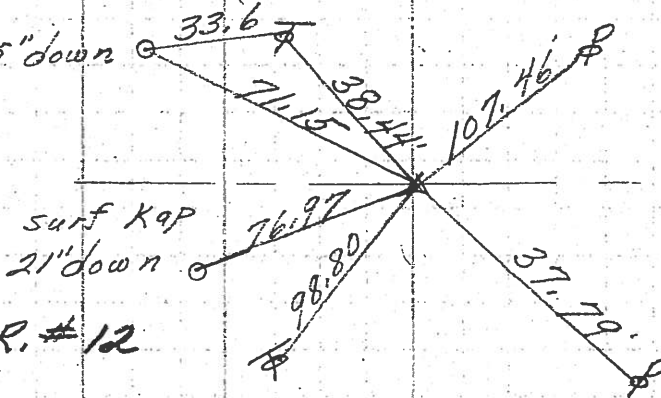


SEE NEW TIES of 6/10/32

"X"s on Piers

12

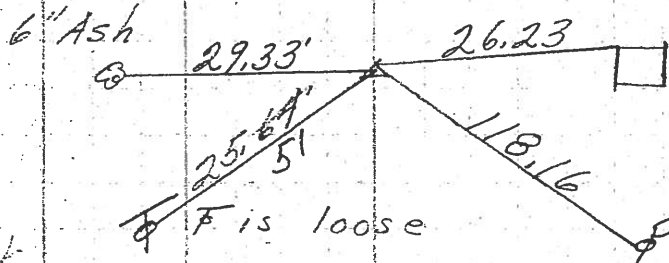
surf Kap 25" down  
3/4" pipe  
2" down



S.R. #12

S.R. #12

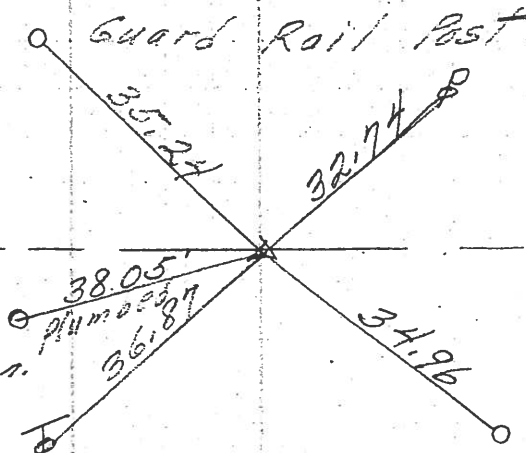
211+98  
212+33.87  
R.R. spk.  
1 1/2" down  
1' Rt. of  $\pm$   
Reset small spk.



SEE NEW TIES of  
9-10-87  
CONC. POST

10

Fd. R.R. spk.  
on top  
sq. shiner on  
tie points  
Reset PV Nail



Co. Rd. # 233

Guard rail post