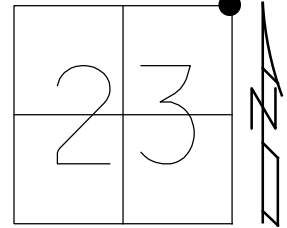


O.D.O.T. DISTRICT 2 SURVEY OFFICE (USE ONLY)

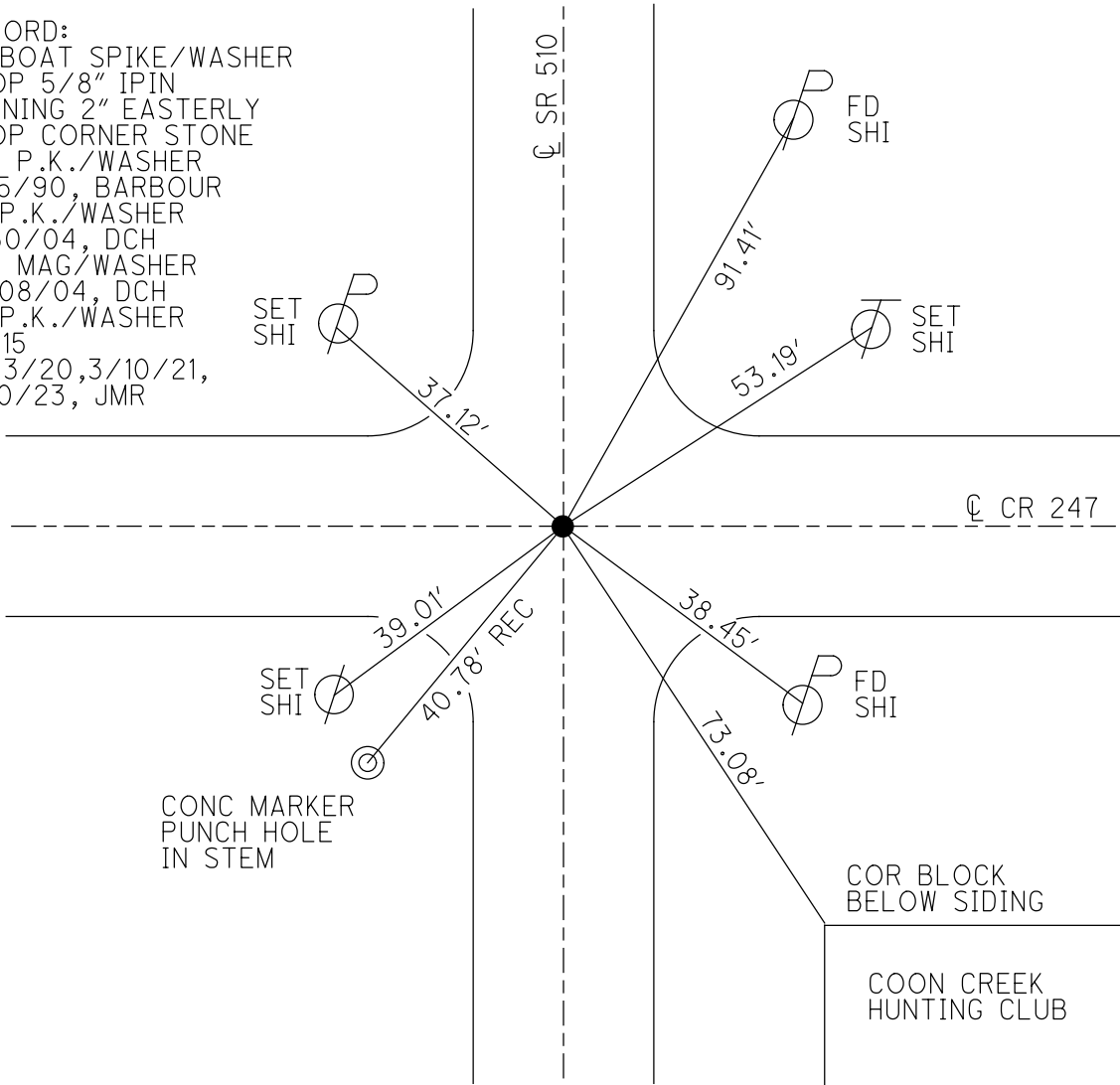
PERSONNEL _____ REFERENCE NO. 15 SHEET 16 OF 18
 NOTES GARRETT DATE 7/23/20 ROUTE SR 510
 H.C. RHOADES WEATHER CLOUDY COUNTY SANDUSKY
 R.C. MAHLER TEMP. 77° TOWNSHIP RILEY
 SECTION 23
 DWG BY RHOADES PID PAVE TRAIN T 5 N R 16 E

TYPE MONUMENT P.K./WASHER
 ON SURFACE - ~~BELOW~~ ON
 OFFSET \bar{C} PAVEMENT 3' LT : ~~RT~~
- TO - EDGE PAVEMENT
 STATION: 292+10



HORZ.DATUM: NAD83 2011 GEOID: NAVD88 2012A
 GRID: NORTHING: 627012.138 EASTING: 1838592.850

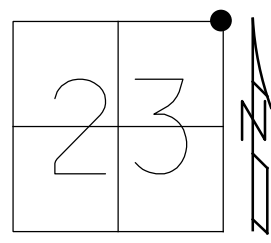
RECORD:
 FD BOAT SPIKE/WASHER
 ATOP 5/8" IPIN
 LEANING 2" EASTERLY
 ATOP CORNER STONE
 SET P.K./WASHER
 8/15/90, BARBOUR
 FD P.K./WASHER
 6/30/04, DCH
 SET MAG/WASHER
 10/08/04, DCH
 FD P.K./WASHER
 REF15
 7/23/20, 3/10/21,
 1/20/23, JMR



O.D.O.T. DISTRICT 2 SURVEY OFFICE (USE ONLY)

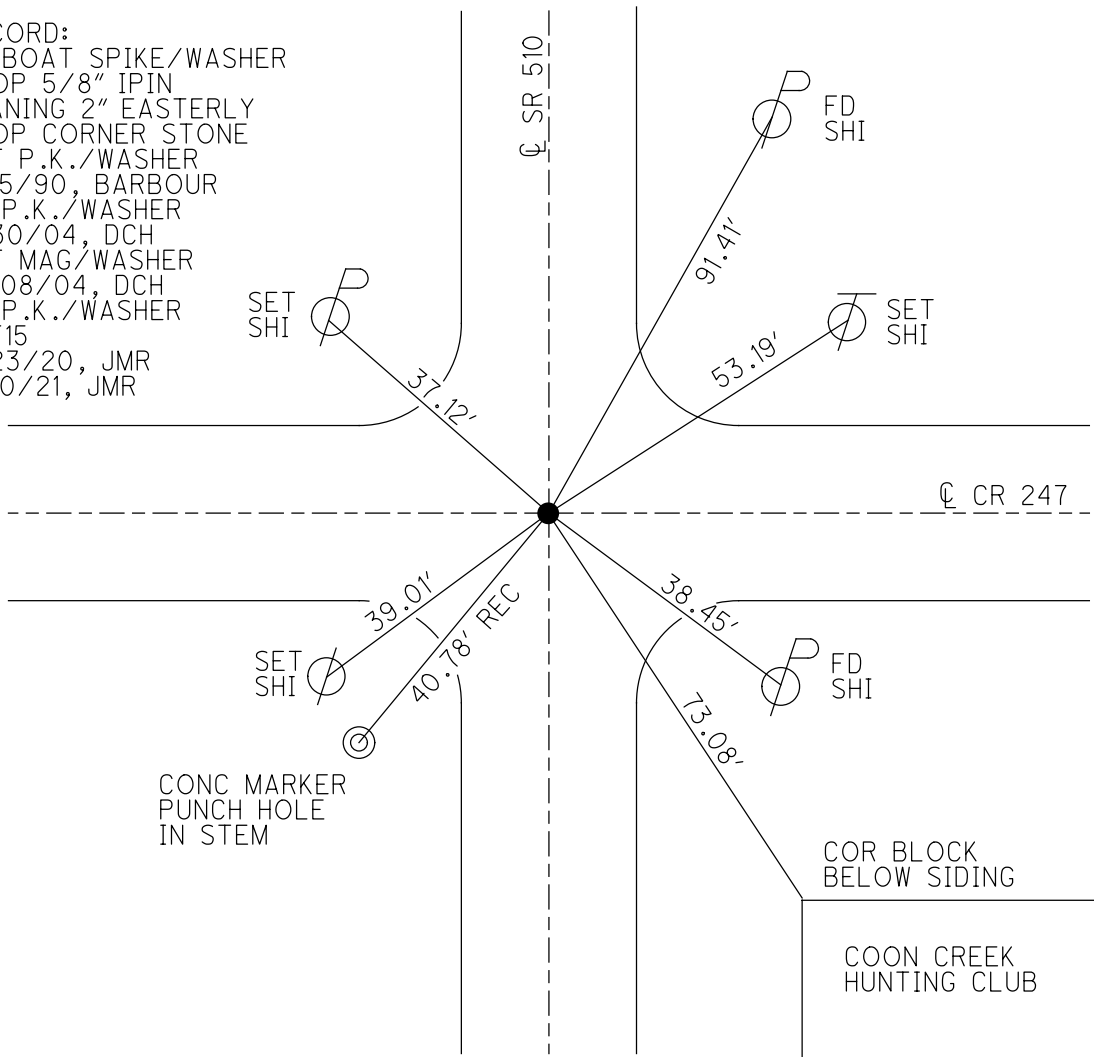
PERSONNEL _____ REFERENCE NO. 15 SHEET 15 OF 17
 NOTES GARRETT DATE 7/23/20 ROUTE SR 510
 H.C. RHOADES WEATHER CLOUDY COUNTY SANDUSKY
 R.C. MAHLER TEMP. 77° TOWNSHIP RILEY
 DWG BY RHOADES PID PAVE TRAIN SECTION 23
 T 5 N R 16 E

TYPE MONUMENT P.K./WASHER
 ON SURFACE - ~~BELOW~~ ON
 OFFSET ϕ PAVEMENT ON LT : RT
- TO - EDGE PAVEMENT
 STATION: 292+10



HORZ.DATUM: NAD83 2011 GEOID: NAVD88 2012A
 GRID: NORTHING: 627012.138 EASTING: 1838592.850

RECORD:
 FD BOAT SPIKE/WASHER
 ATOP 5/8" IPIN
 LEANING 2" EASTERLY
 ATOP CORNER STONE
 SET P.K./WASHER
 8/15/90, BARBOUR
 FD P.K./WASHER
 6/30/04, DCH
 SET MAG/WASHER
 10/08/04, DCH
 FD P.K./WASHER
 REF15
 7/23/20, JMR
 3/10/21, JMR



O.D.O.T. DISTRICT 2 SURVEY OFFICE (USE ONLY)

PERSONNEL _____

REFERENCE NO. 15

SHEET 15 OF 17

NOTES HOMAN

DATE 6/30/04

ROUTE SR 510

H.C. HUSS

WEATHER SUNNY

COUNTY SANDUSKY

R.C. NUHFER

TEMP. 75°

TOWNSHIP RILEY

SECTION 23

DWG BY _____ PID _____

T 5 N R 16 E

TYPE MONUMENT P.K./WASHER

ON SURFACE - ~~BELOW~~ ON

OFFSET C PAVEMENT ON _____ LT : RT
 - _____ TO - _____ EDGE PAVEMENT

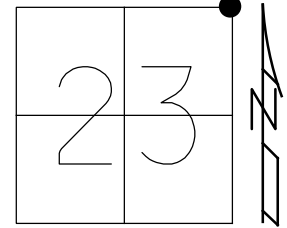
STATION: 292+10

HORZ. DATUM: _____

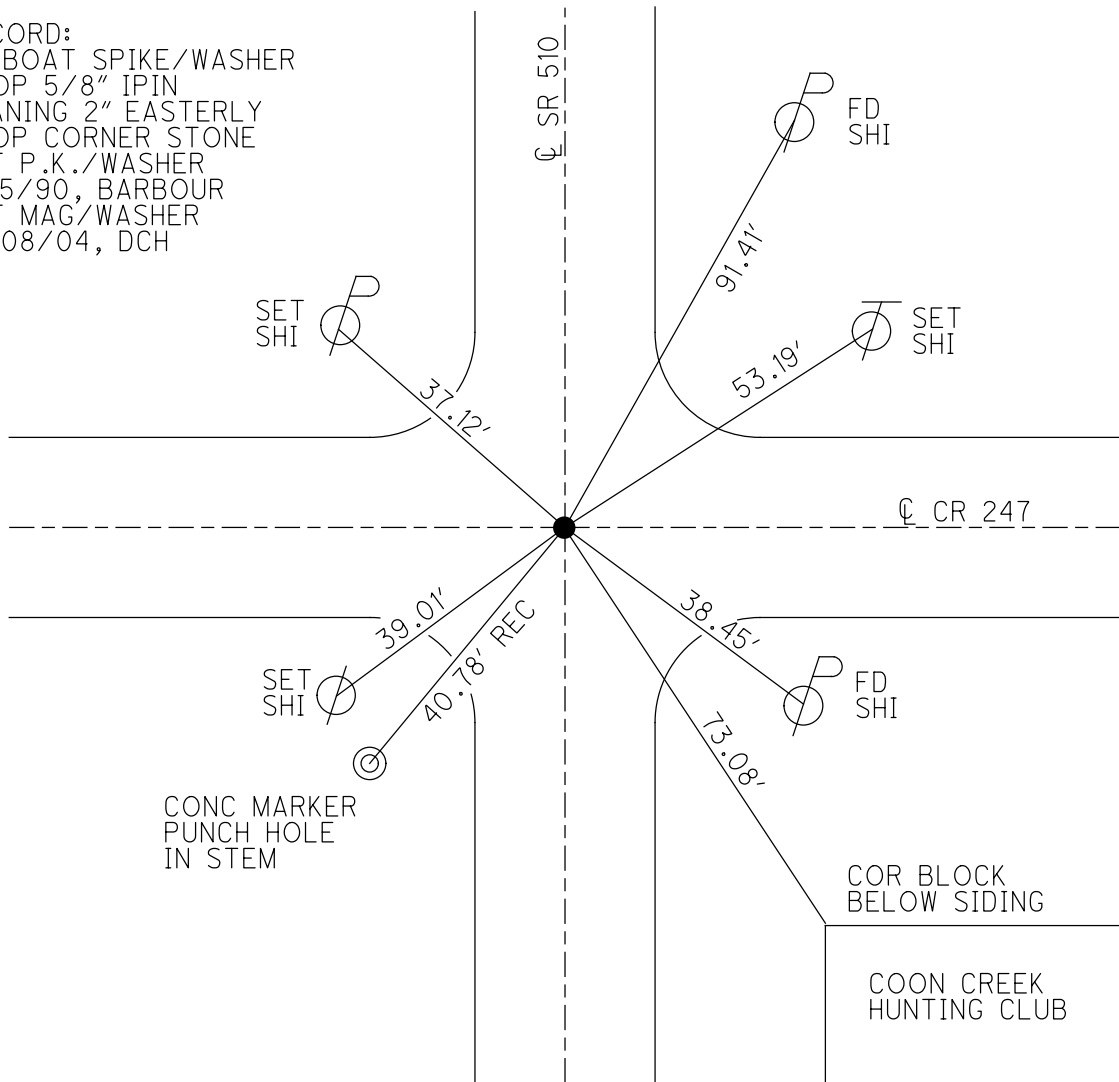
GEOID: _____

GRID: NORTHING: _____

EASTING: _____



RECORD:
 FD BOAT SPIKE/WASHER
 ATOP 5/8" IPIN
 LEANING 2" EASTERLY
 ATOP CORNER STONE
 SET P.K./WASHER
 8/15/90, BARBOUR
 SET MAG/WASHER
 10/08/04, DCH



O.D.O.T. DISTRICT 2 SURVEY OFFICE

PERSONNEL _____

REFERENCE NO. 15

SHEET 15 OF 17

NOTES HOMAN _____

DATE 6-30-04

ROUTE SR 510

H.C. HUSS

WEATHER SUNNY

COUNTY SANDUSKY

R.C. NUHFER

TEMP. +80°

TOWNSHIP RILEY

SECTION 23

T 5 N R 16 E

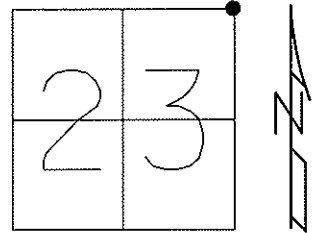
TYPE MONUMENT P.K. & WASHER

ON SURFACE ~~-BELOW-~~ ON _____

~~LEFT~~ - Q PAV'T - ~~RIGHT~~ ON _____

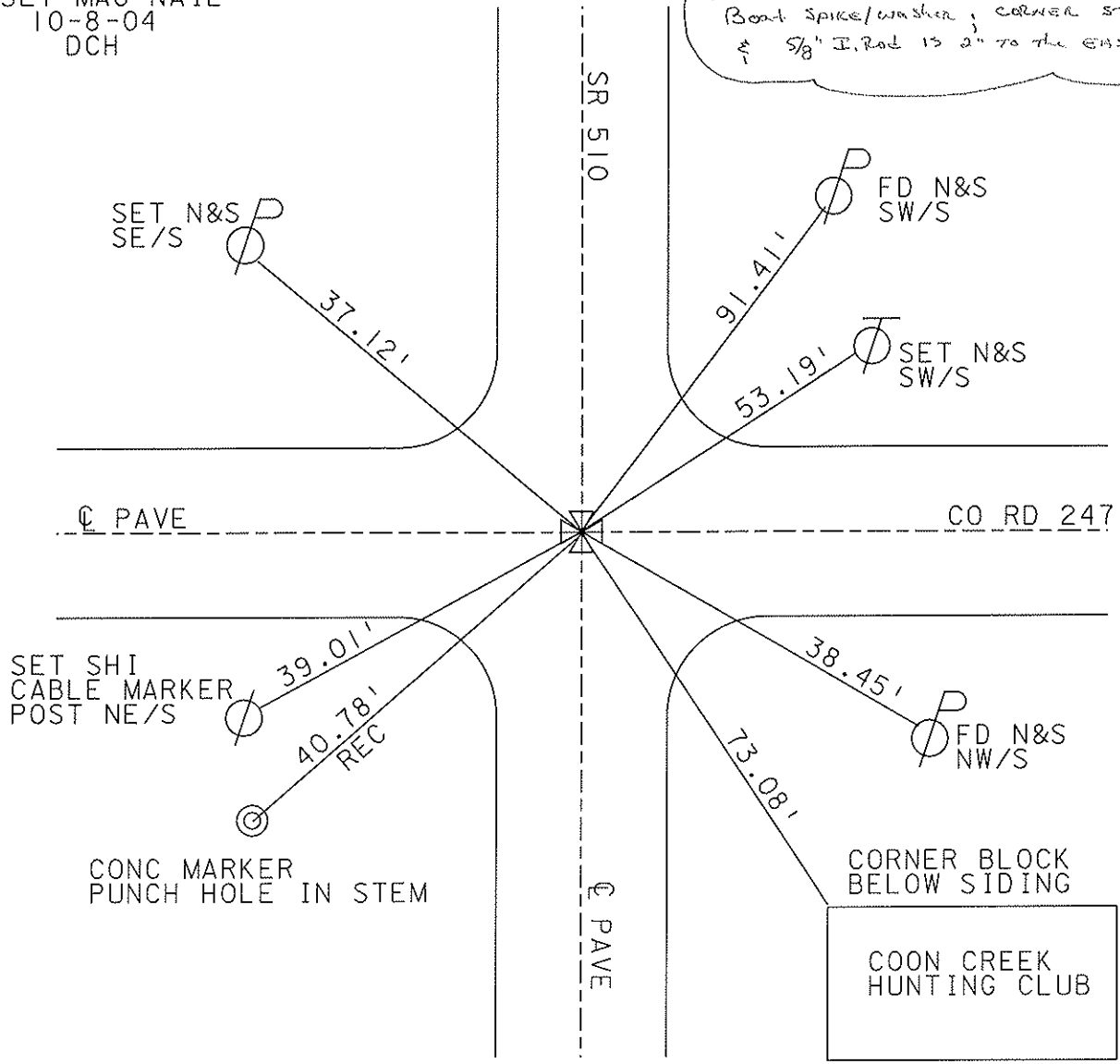
TO _____ EDGE PAVEMENT

S.L.M. _____ 292+10



RESET MAG NAIL
10-8-04
DCH

RECORD 1990
Boat spike/washer, corner stone
& 5/8" I. Rod 15" to the east



O.D.O.T. DISTRICT 2 SURVEY OFFICE

PERSONNEL

REFERENCE NO. 15

SHEET 13 OF 15

NOTES Ripple

H.C. Barbour

DATE 8/15/90

ROUTE SR# 510

R.C. Geyman

WEATHER SUNNY

COUNTY SANDUSKY

TEMP. 83°

TOWNSHIP Riley

SECTION 23

T. 5 N R. 16 E

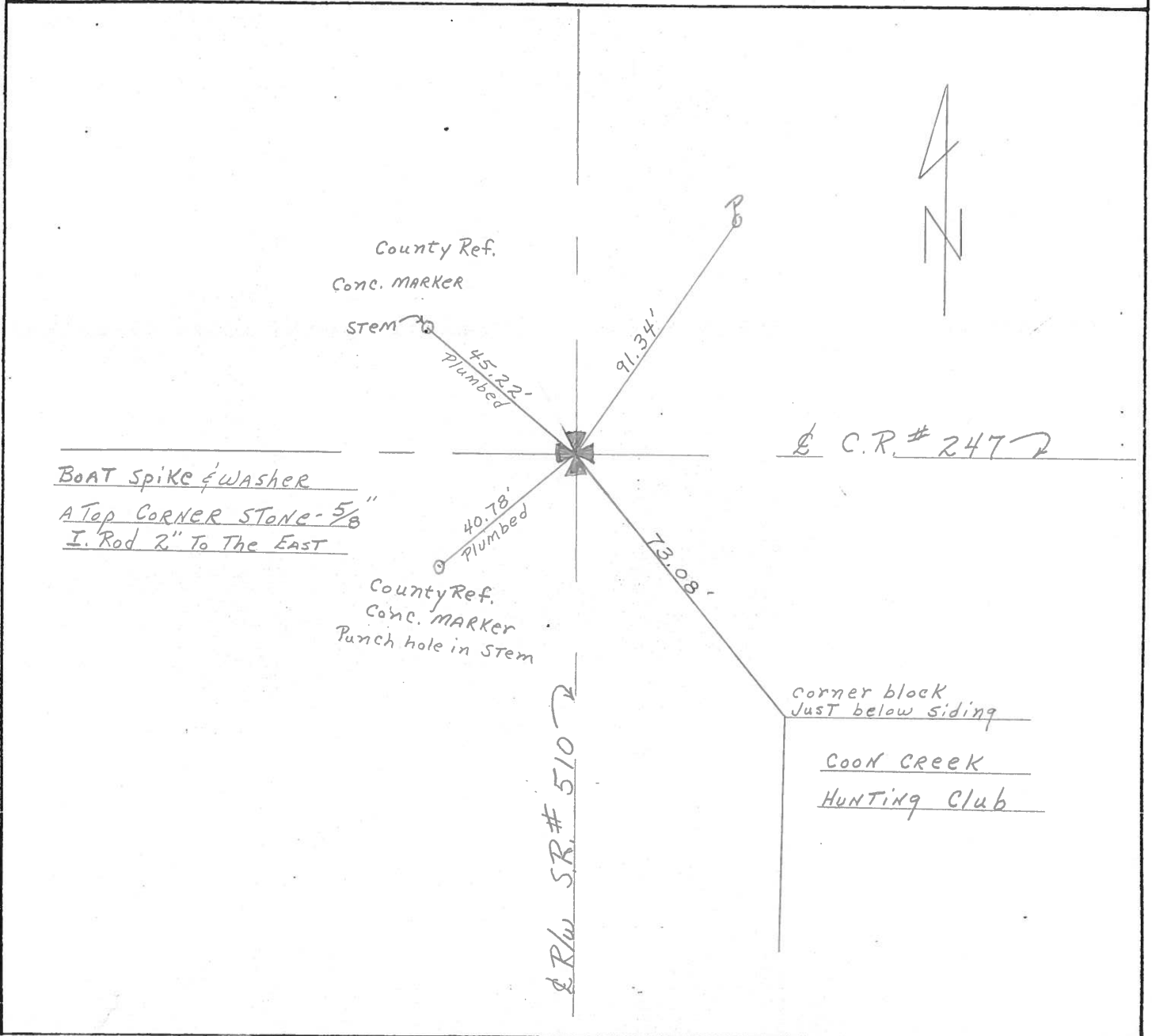
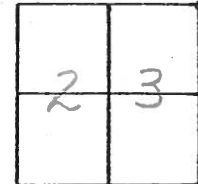
TYPE MONUMENT Set PK. & Washer

ON SURFACE - BELOW A Top Boat Spike & Washer A Top Stone

LEFT - & Pav't. - RIGHT 1.5' Lt. & Pavmt.

TO EDGE PAVEMENT

S.L.M. _____



O.D.O.T. DISTRICT 2 SURVEY OFFICE

SHEET

OF

County Sandusky S.R. # 510

Date 6/10/82

Township Riley

Weather sunny

Section 23

Temp. 75°

T5N, R16E

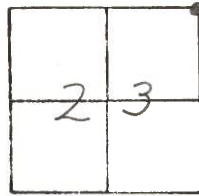
Personnel Cronin

Ripple

#15

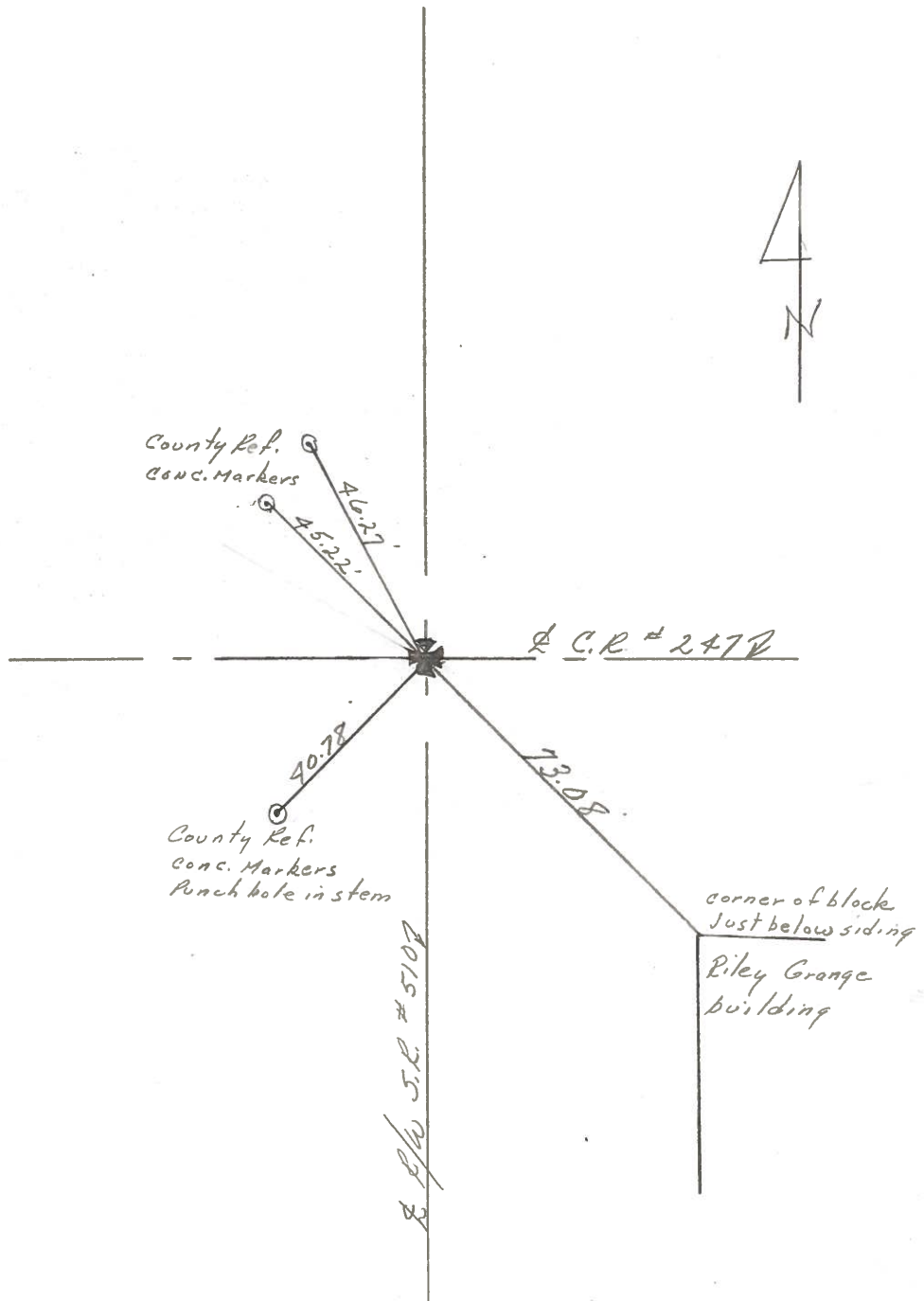
Mosser

Barbour



(2)

Corner stone - 5/8"
I Rod 2" to the east



PERSONNEL TITLE PERSONNEL TITLE

COUNTY Sandusky DATE 8-14-72
5-15-71

S. R. 510 WEATHER Fair

SEC. U.S. 20 to U.S. 6 TEMP. 50°

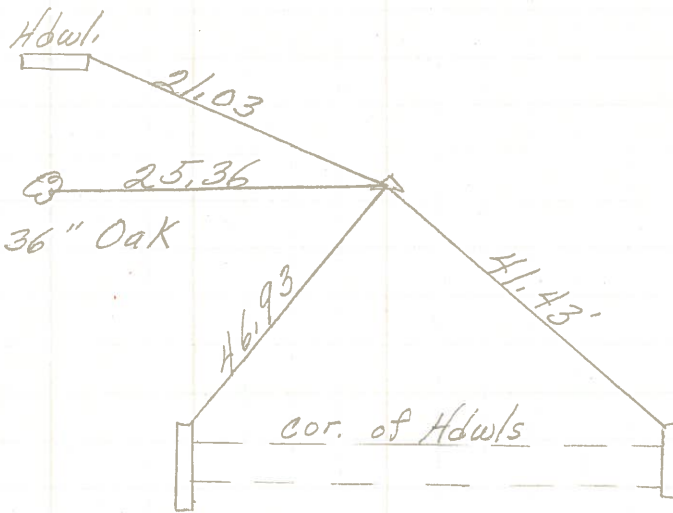
DESCRIPTION LEFT CENTER LINE RIGHT JOB NO.

AS 7065 U.S. #6

U.S. #6

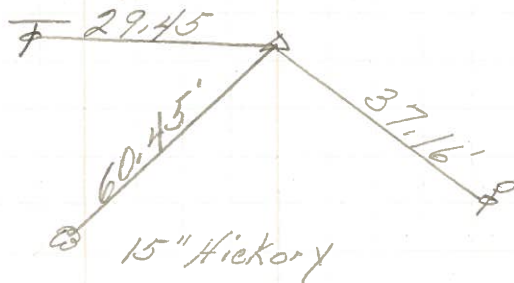
16

334+ 62.63
R. R. Spk.
1" down
Reset P.K. Nail



15A

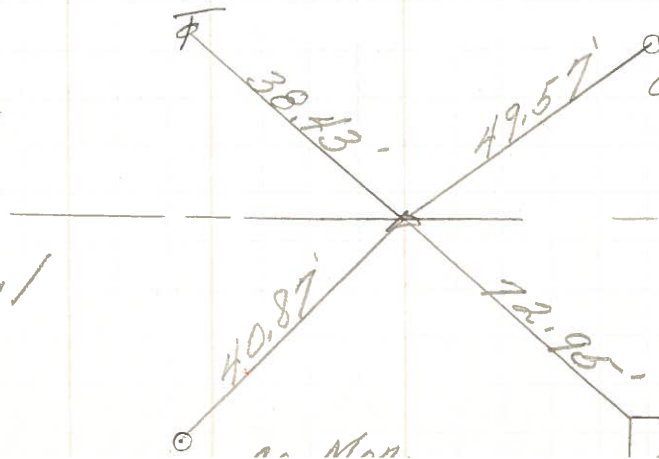
331+ 26.26
R. R. Spk.
1/2" down
Reset P.K. Nail



SEE NEW TIES OF 6/10/82

15

5/8" iron pin
Reset P.K. Nail



SEE NEW TIES OF 6/10/82

Co. Rd. # 247

Riley Grange
N.W. Cor. Building