

O.D.O.T. DISTRICT 2 SURVEY OFFICE (USE ONLY)

PERSONNEL

REFERENCE NO. 15 A

SHEET 17 OF 18

NOTES GARRETT

DATE 7/23/20

ROUTE SR 510

H.C. RHOADES

WEATHER CLOUDY

COUNTY SANDUSKY

R.C. MAHLER

TEMP. 77°

TOWNSHIP RILEY

SECTION 14

DWG BY RHOADES

PID PAVE TRAIN

T 5 N R 16 E

TYPE MONUMENT P.K./WASHER

ON SURFACE - ~~BELOW~~ ON

OFFSET Q PAVEMENT 1.7' ~~LT~~ : RT

7' TO RT EDGE PAVEMENT

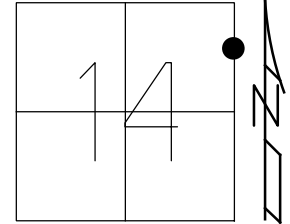
STATION: 331+82

HORIZ.DATUM: _____

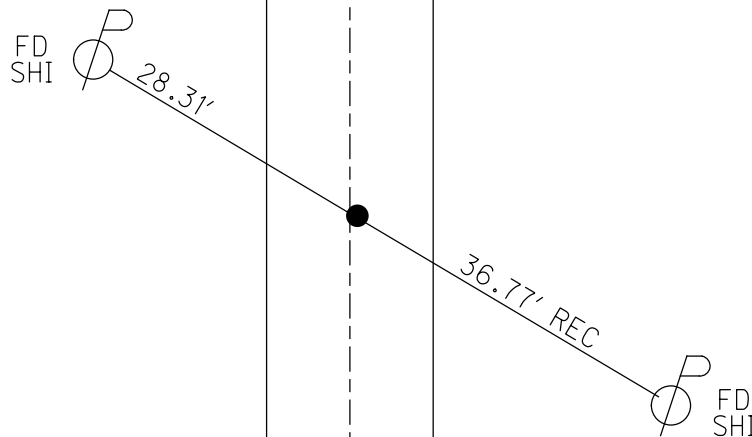
GEOID: _____

GRID: NORTHING: _____

EASTING: _____



RECORD:
 STA 331+26.26
 FD R.R.SPIKE
 2" DOWN
 SET P.K.NAIL
 1971
 FD P.K./WASHER
 6/30/04, DCH
 SET MAG/WASHER
 9/03/04, DCH
 D.N.F.
 7/23/20, JMR



O.D.O.T. DISTRICT 2 SURVEY OFFICE (USE ONLY)

PERSONNEL _____

REFERENCE NO. 15 A

SHEET 16 OF 17

NOTES HOMAN DATE 6/30/04

ROUTE SR 510

H.C. HUSS WEATHER SUNNY

COUNTY SANDUSKY

R.C. NUHFER TEMP. 80°

TOWNSHIP RILEY

SECTION 14

DWG BY _____ PID _____

T 5 N R 16 E

TYPE MONUMENT P.K./WASHER

ON SURFACE - ~~BELOW~~ ON _____

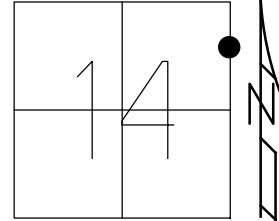
OFFSET \odot PAVEMENT 1.7' ~~LT~~ : RT

7' TO RT EDGE PAVEMENT

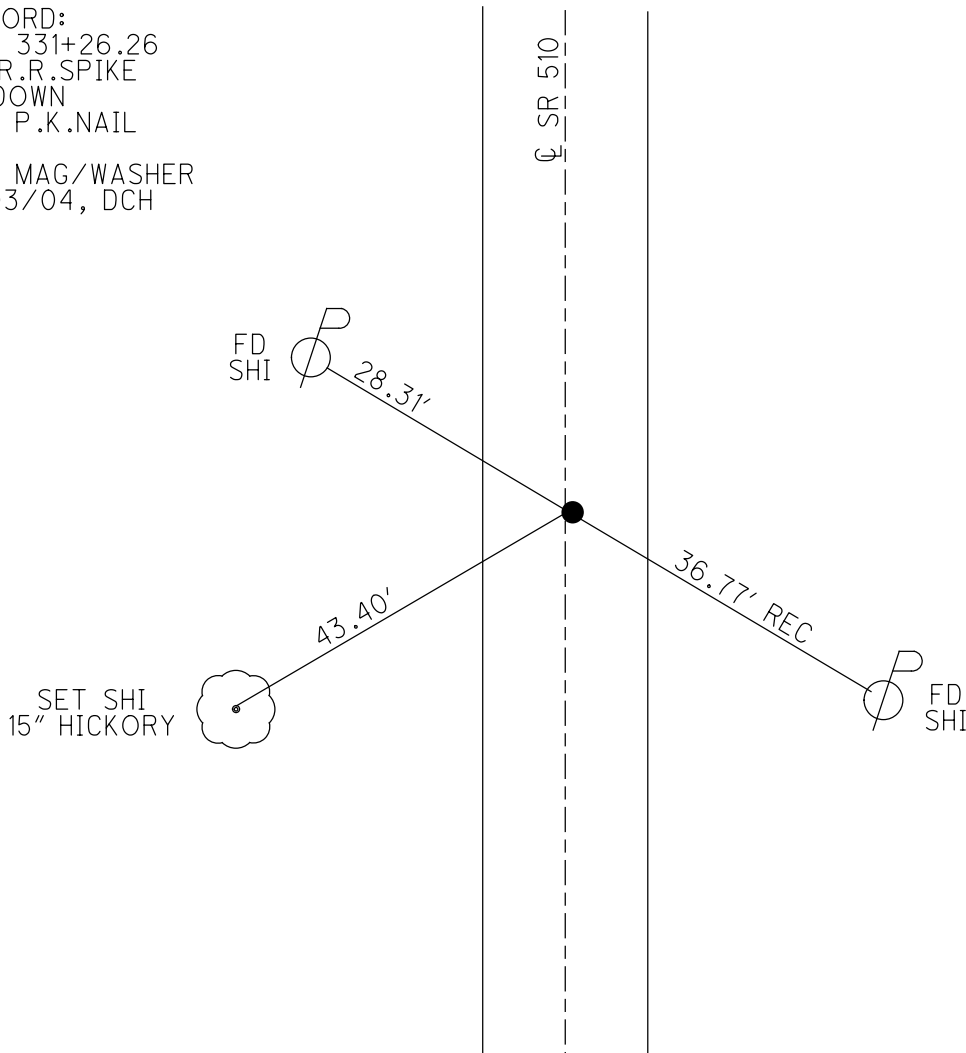
STATION: 331+82

HORZ. DATUM: _____ GEOID: _____

GRID: NORTHING: _____ EASTING: _____



RECORD:
 STA 331+26.26
 FD R.R.SPIKE
 2" DOWN
 SET P.K.NAIL
 1971
 SET MAG/WASHER
 9/03/04, DCH



O.D.O.T. DISTRICT 2 SURVEY OFFICE

PERSONNEL _____

REFERENCE NO. 15A

SHEET 16 OF 17

NOTES HOMAN _____

DATE 6-30-04

ROUTE SR 510

H.C. HUSS

WEATHER SUNNY

COUNTY SANDUSKY

R.C. NUHFER

TEMP. +80°

TOWNSHIP RILEY

SECTION 14

T 5 N R 16 E

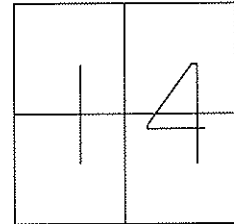
TYPE MONUMENT P.K. & WASHER

ON SURFACE - ~~BELOW~~ ON

~~LEFT~~ Q PAVE - RIGHT 1.7'

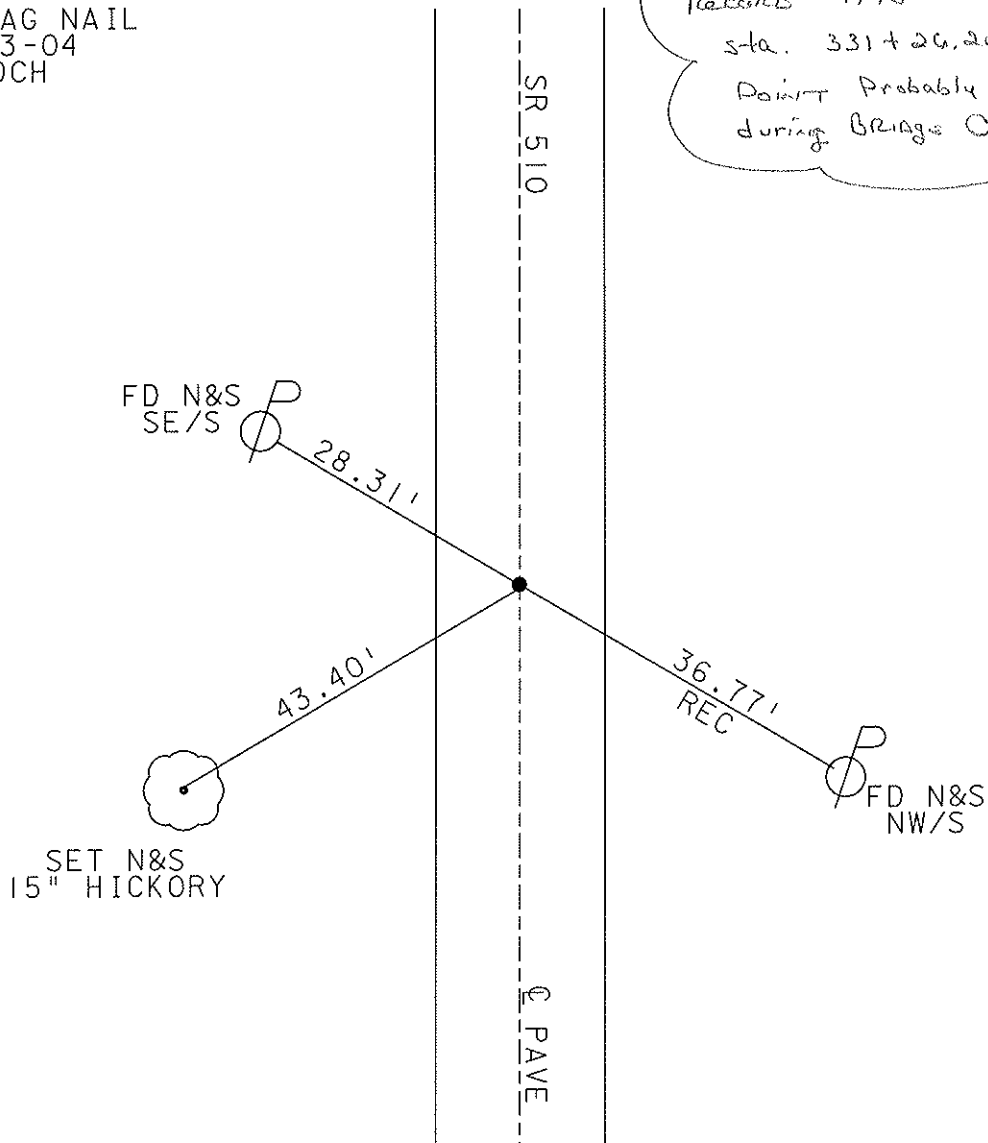
7.0' TO RT EDGE PAVEMENT

S.L.M. 331+82



SET MAG NAIL
9-3-04
DCH

*Revised 1990
Sta. 331+26.26
Point probably established
during BRAGG Construction*



O.D.O.T. DISTRICT 2 SURVEY OFFICE

PERSONNEL

REFERENCE NO. 15-A

SHEET 14 OF 15

NOTES Ripple

H.C. BARBOUR

DATE 8/15/90

ROUTE SR#510

R.C. GeyMAN

WEATHER SUNNY

COUNTY SANDUSKY

TEMP. 83°

TOWNSHIP Riley

SECTION 14

T 5 N R 16 E

TYPE MONUMENT Set P.K. & Washer

ON SURFACE - BELOW P.K. & Washer ATop RR. spike

LEFT- & PAV'T. - RIGHT 2' RT. & PAVMT.

TO EDGE PAVEMENT

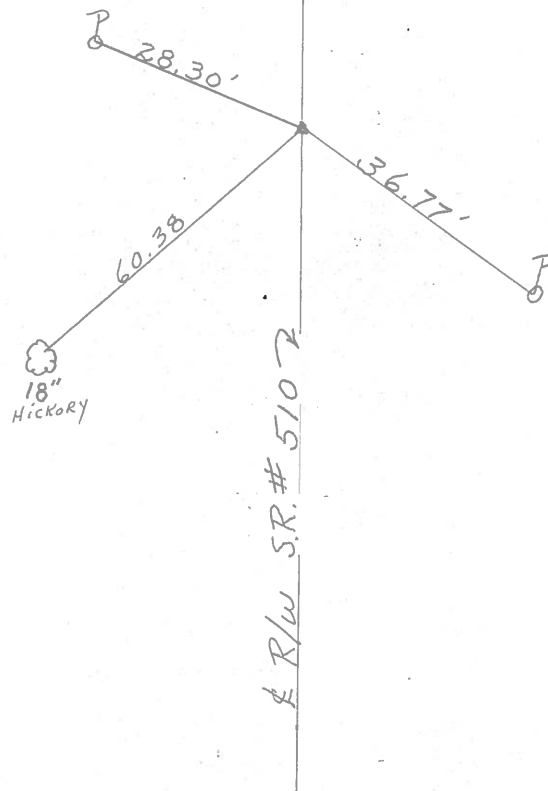
S.L.M. _____

| | |
|---|---|
| | |
| 1 | 4 |
| | |



Point Probably Established during bridge construction

331+26.26



County Sandusky S.R. #510

Township Riley

Section 14

T5N, R16E

Personnel Cronin

Rippie

Mosser

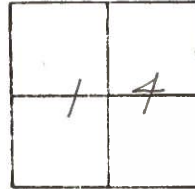
Barbour

#15-A

Date 6/10/82

Weather sunny

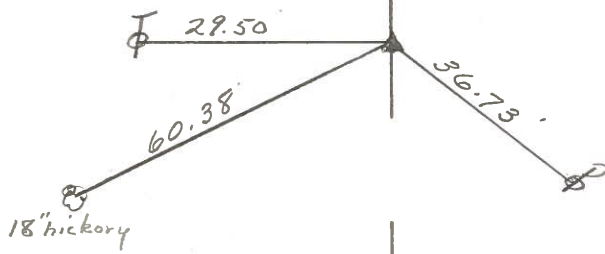
Temp. 75°



3



331+26.26
 P.K. Φ washer set
 atop R.R. spike
 Point probably established
 during bridge construction



R/W S.R. #510

PERSONNEL TITLE PERSONNEL TITLE

COUNTY Sandusky DATE 5-15-71

S. R. 510 WEATHER Fair

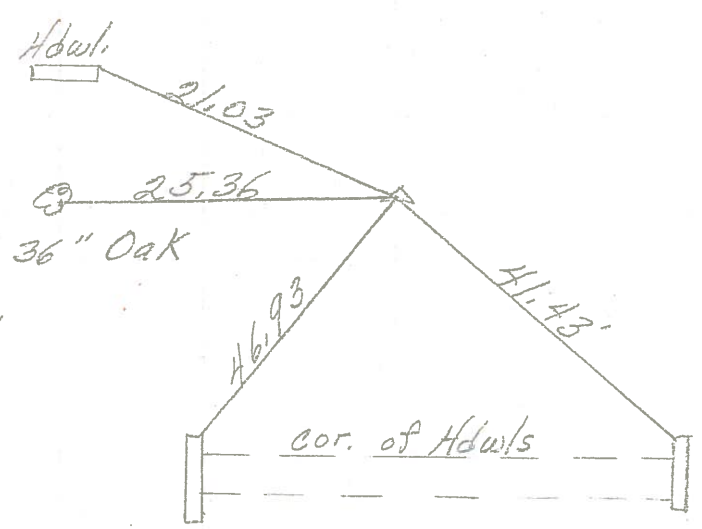
SEC. U.S. 20 to US 6 TEMP. 50°

DESCRIPTION LEFT CENTER LINE RIGHT JOB NO.



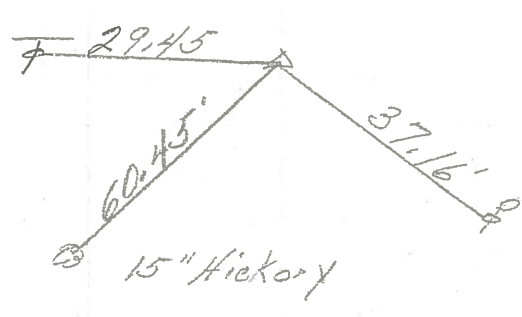
16

334+62.63
 R. R. Spk.
 1" down
 Reset P.K. Nail



15A

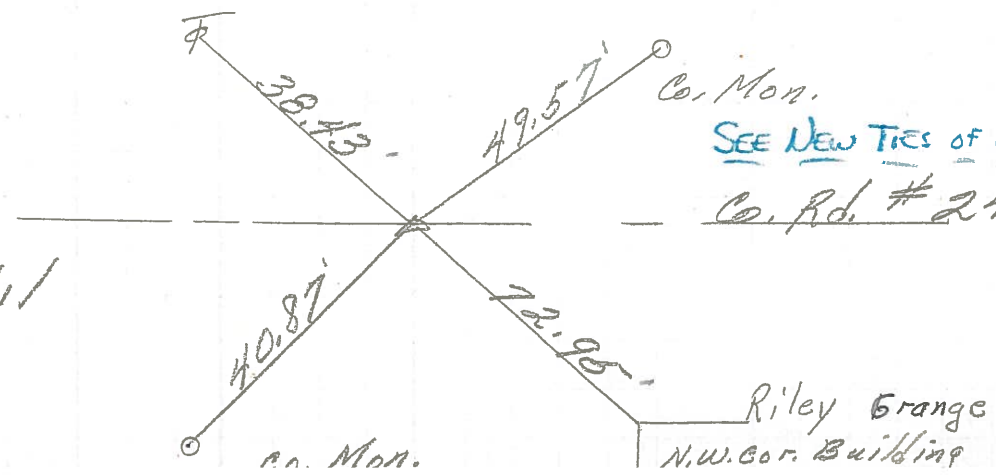
331+26.26
 R. R. Spk.
 1/2" down
 Reset P.K. Nail



SEE NEW TIES OF 6/10/82

15

5/8" Iron pin
 Reset P.K. Nail



SEE NEW TIES OF 6/10/82

Co. Rd. # 247

| PERSONNEL | TITLE | PERSONNEL | TITLE |
|-----------|-------|-----------|-------|
| Schneider | | Potts | |
| Mosser | | | |
| Barbour | | | |
| Redding | | | |

COUNTY Sandusky DATE 4-23-68
 S. R. 510 WEATHER Windy-Rain
 SEC. U.S.#20 to U.S.#6 TEMP. 70°

DESCRIPTION Ties for Co. Points JOB NO. _____

LEFT CENTER LINE RIGHT

