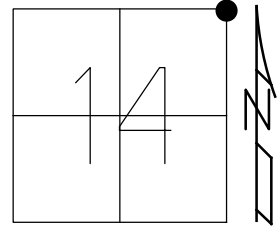


O.D.O.T. DISTRICT 2 SURVEY OFFICE (USE ONLY)

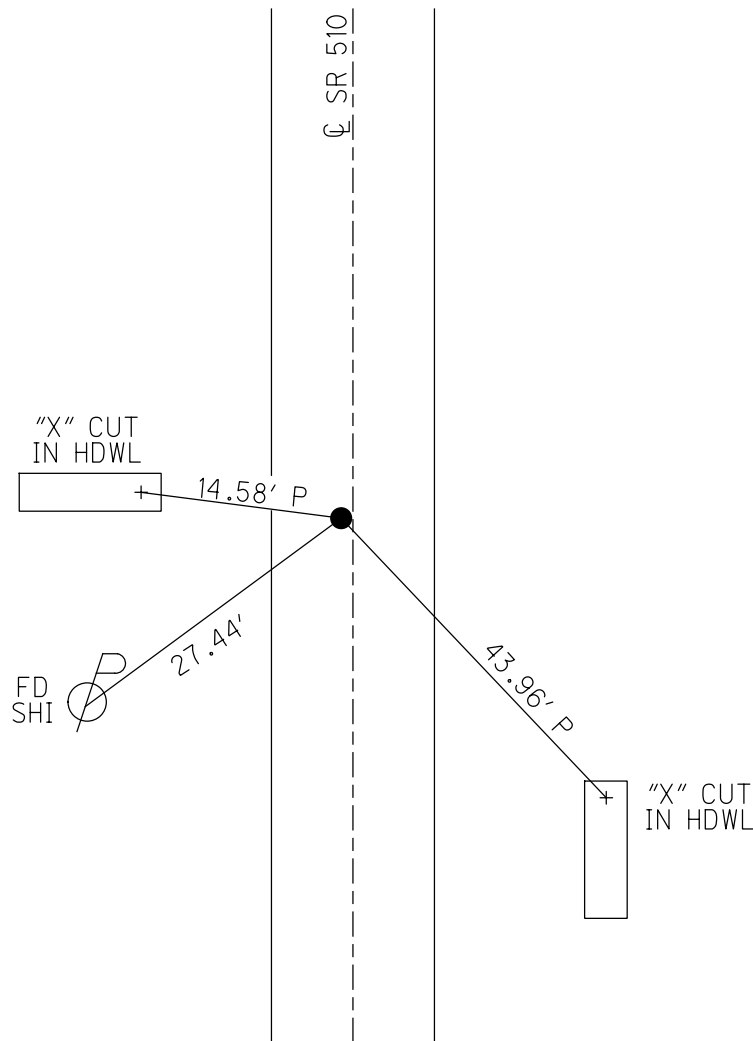
PERSONNEL _____ REFERENCE NO. 16 SHEET 18 OF 18
 NOTES RHOADES DATE 7/20/22 ROUTE SR 510
 H.C. RHOADES WEATHER CLOUDY COUNTY SANDUSKY
 R.C. WHITAKER TEMP. 77° TOWNSHIP RILEY
 DWG BY WHITAKER PID PVTRN SECTION 14
 T 5 N R 16 E

TYPE MONUMENT SM. R.R.SPIKE
~~ON SURFACE~~ - BELOW ON
 OFFSET \odot PAVEMENT 2' LT : ~~RT~~
- TO - EDGE PAVEMENT
 STATION: 345+20



HORZ.DATUM: NAD83 2011 GEOID: NAVD88 2012A
 GRID: NORTHING: 632318.015 EASTING: 1838696.785

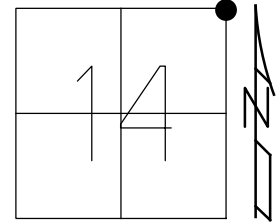
RECORD:
 STA 334+62.63
 FD R.R.SPIKE
 1" DOWN
 SET P.K.NAIL
 1971
 FD P.K./WASHER
 6/30/04, DCH
 SET MAG/WASHER
 9/03/04, DCH
 D.N.F.
 7/23/20
 3/10/21, JMR
 FD SM. R.R. SPIKE
 2.5" DOWN
 REF16
 7/20/22, JMR



O.D.O.T. DISTRICT 2 SURVEY OFFICE (USE ONLY)

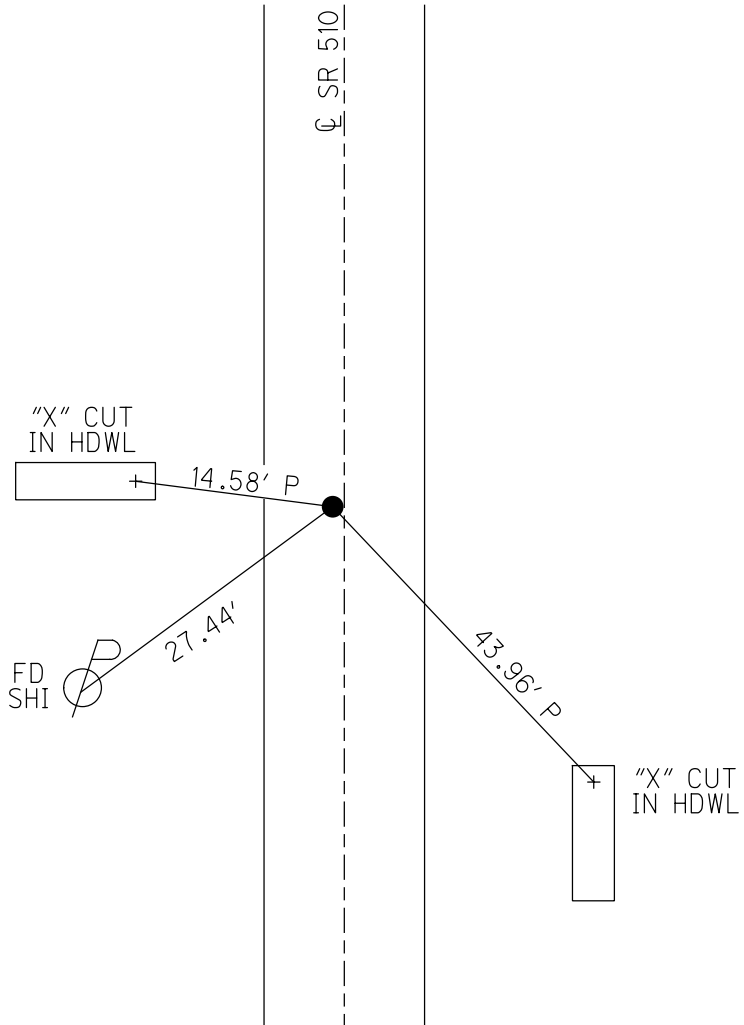
PERSONNEL _____ REFERENCE NO. 16 SHEET 17 OF 17
 NOTES GARRETT DATE 7/23/20 ROUTE SR 510
 H.C. RHOADES WEATHER CLOUDY COUNTY SANDUSKY
 R.C. MAHLER TEMP. 77° TOWNSHIP RILEY
 DWG BY RHOADES PID PAVE TRAIN SECTION 14
 T 5 N R 16 E

TYPE MONUMENT P.K./WASHER
 ON SURFACE - ~~BELOW~~ ON _____
 OFFSET \odot PAVEMENT 2' LT : ~~RT~~
 _____ TO _____ EDGE PAVEMENT
 STATION: 345+20



HORZ.DATUM: NAD83 2011 GEOID: NAVD88 2012A
 GRID: NORTHING: _____ EASTING: _____

RECORD:
 STA 334+62.63
 FD R.R.SPIKE
 1" DOWN
 SET P.K.NAIL
 1971
 FD P.K./WASHER
 6/30/04, DCH
 SET MAG/WASHER
 9/03/04, DCH
 D.N.F.
 7/23/20, JMR



O.D.O.T. DISTRICT 2 SURVEY OFFICE (USE ONLY)

PERSONNEL _____

REFERENCE NO. 16

SHEET 17 OF 17

NOTES HOMAN

DATE 6/30/04

ROUTE SR 510

H.C. HUSS

WEATHER SUNNY

COUNTY SANDUSKY

R.C. NUHFER

TEMP. 75°

TOWNSHIP RILEY

SECTION 14

DWG BY _____ PID _____

T 5 N R 16 E

TYPE MONUMENT P.K./WASHER

ON SURFACE - ~~BELOW~~ ON _____

OFFSET \odot PAVEMENT 2' LT : ~~RT~~

- TO - EDGE PAVEMENT

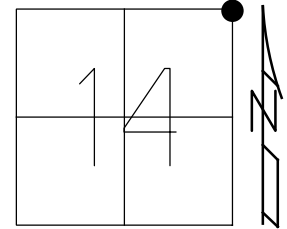
STATION: 345+20

HORZ.DATUM: _____

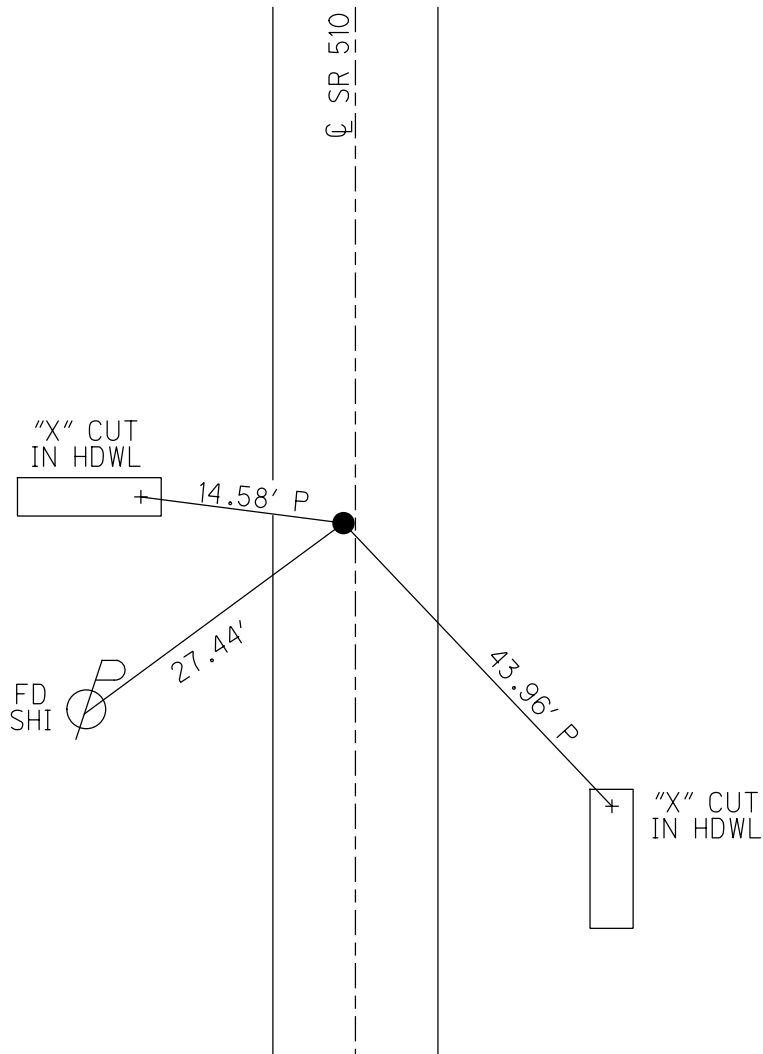
GEOID: _____

GRID: NORTHING: _____

EASTING: _____



RECORD:
 STA 334+62.63
 FD R.R.SPIKE
 1" DOWN
 SET P.K.NAIL
 1971
 SET MAG/WASHER
 9/03/04, DCH



O.D.O.T. DISTRICT 2 SURVEY OFFICE

PERSONNEL _____

REFERENCE NO. 16

SHEET 17 OF 17

NOTES HOMAN _____

DATE 6-30-04

ROUTE SR 510

H.C. HUSS

WEATHER SUNNY

COUNTY SANDUSKY

R.C. NUHFER

TEMP. +80°

TOWNSHIP RILEY

SECTION RILEY

T 5 N R 16 E

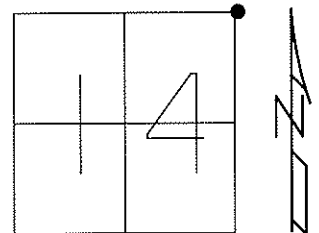
TYPE MONUMENT P.K. & WASHER

ON SURFACE - ~~BELOW~~ _____ ON _____

LEFT - ~~Q PAVT - RIGHT~~ 2'

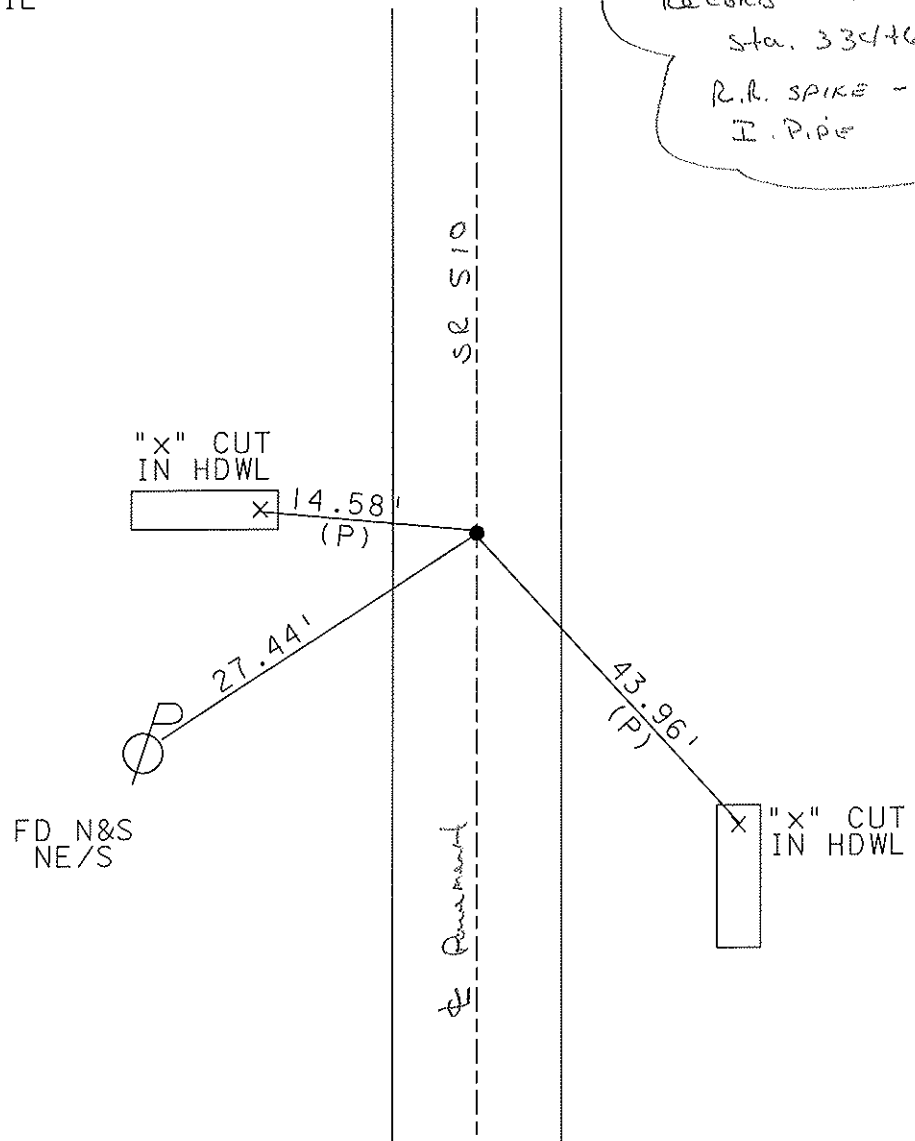
_____ TO _____ EDGE PAVEMENT

S.L.M. _____ 345+20



SET MAG NAIL
9-3-04
DCH

Records 1990
Sta. 334+62.63
R.R. SPIKE - I.P.PE -
I.P.PE



O.D.O.T. DISTRICT 2 SURVEY OFFICE

PERSONNEL

REFERENCE NO. 16

SHEET 15 OF 15

NOTES RIPPLE

H.C. BARBOUR

DATE 8/15/90

ROUTE SR#510

R.C. GEYMAN

WEATHER SUNNY

COUNTY SANDUSKY

TEMP. 83°

TOWNSHIP RILEY

SECTION 14

T. 5 N R. 16 E

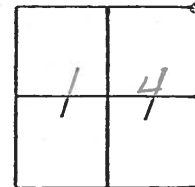
TYPE MONUMENT Dig when Needed

ON SURFACE - BELOW I. PIPE A Top I. PIPE

LEFT - ¢ PAV'T. - RIGHT 2' ± LT. ¢, PAVMT.

TO EDGE PAVEMENT

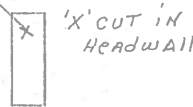
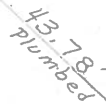
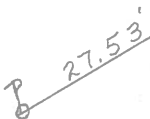
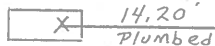
S.L.M. _____



R.R. Spike A Top I. Pipe
A Top I. Pipe

334+62.63

'X' CUT IN CONC.
ENDWALL



RR/W SR #510

O.D.O.T. DISTRICT 2 SURVEY OFFICE

SHEET

OF

County Sandusky S.R. # 510

Date 6/10/82

Township Riley

Weather Sunny

Section 14

Temp. 75°

T 5 N, R 16 E

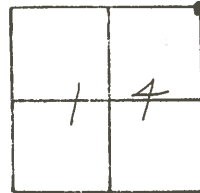
Personnel Cronin

Ripple

Mosser

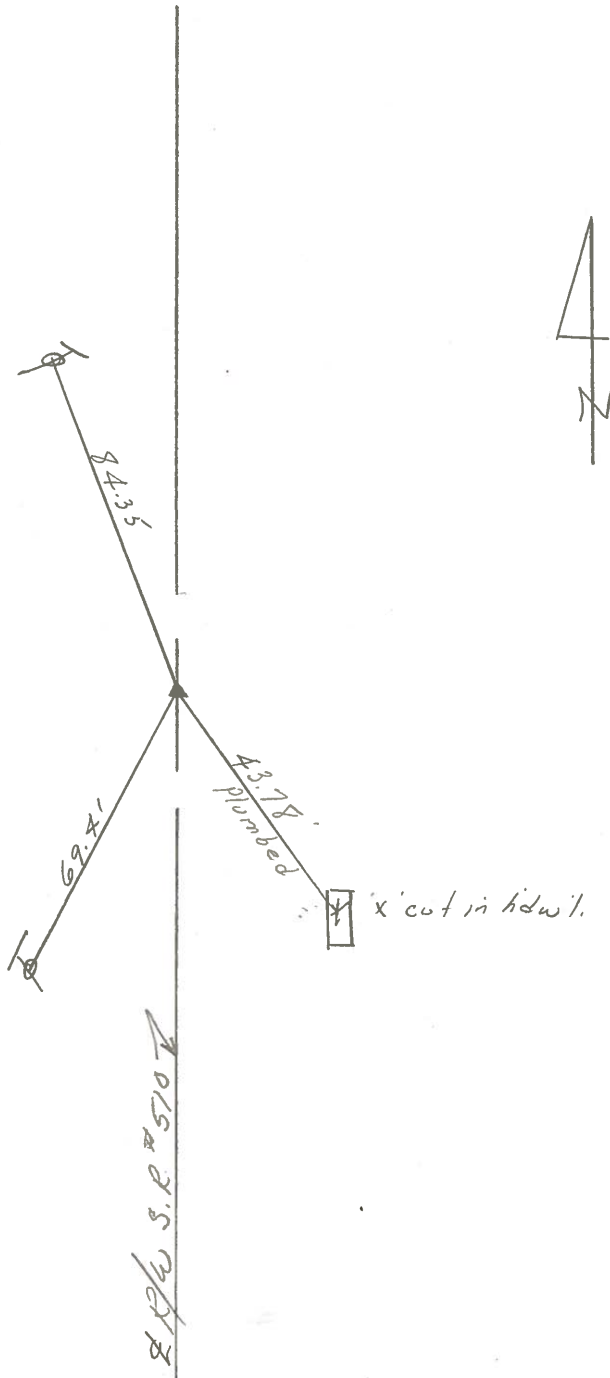
Barbour

#16



(7)

334+62.63
R.R. spike atop I. Pipe & top
I. pipe - 2' Lt. &
Pavement



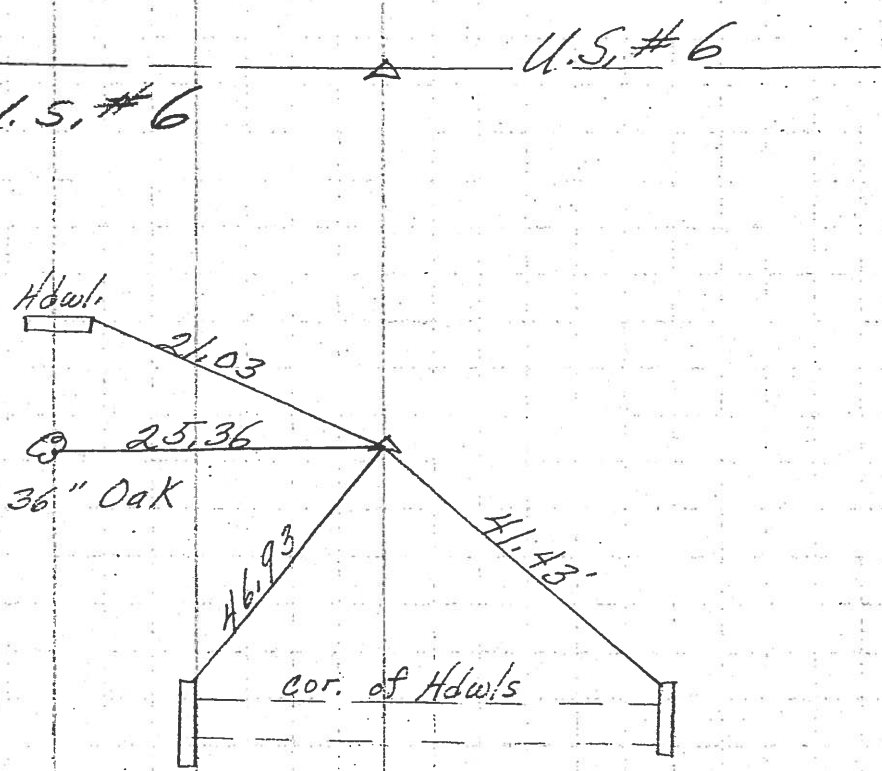
PERSONNEL	TITLE	PERSONNEL	TITLE

COUNTY Sandusky WEATHER Fair
 S. R. 510 TEMP 50°
 SEC. U.S. 20 to 45.6

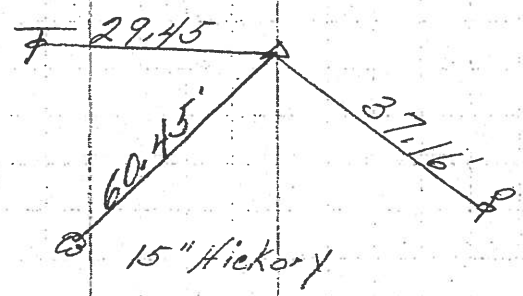
DESCRIPTION _____ LEFT _____ CENTER LINE _____ RIGHT _____ JOB NO. _____

(16)

334+62.63
 R.R. Spk.
 1" down
 Reset P.K. Nail



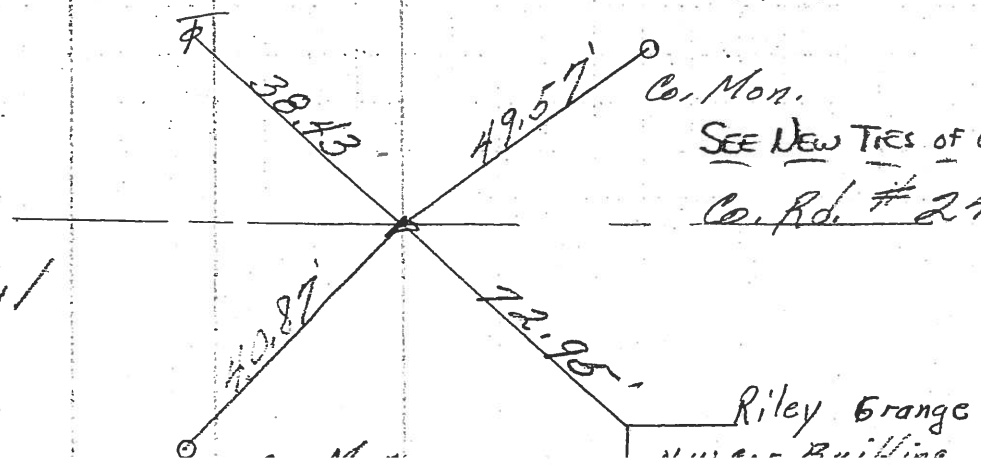
331+26.26
 R.R. Spk.
 1/2" down
 Reset P.K. Nail



SEE NEW TIES OF 6/10/82

(15)

5/8" iron pin
 Reset P.K. Nail



SEE NEW TIES OF 6/10/82

Co. Rd. # 247

Riley Grange
 Building

PERSONNEL	TITLE	PERSONNEL	TITLE	COUNTY	DATE	S. R.	WEATHER	TEMP.	JOB NO.
Schneider		Potts		Sandusky	4-23-68	510	Windy-Rain	70°	
Mosser									
Barbour									
Redding									

DESCRIPTION: Ties for Control Point

