

O.D.O.T. DISTRICT 2 SURVEY OFFICE (USE ONLY)

PERSONNEL

REFERENCE NO. 1

SHEET 1 OF 10

NOTES MILLER
 H.C. LEU
 R.C. MILLER

DATE 12/13/18
 WEATHER SUNNY
 TEMP. 43°

ROUTE SR 523
 COUNTY SANDUSKY
 TOWNSHIP RICE
 SECTION 28
 T 6 N R 15 E

DWG BY AUBLE PID 84079

TYPE MONUMENT MONBOX W/IPIN W/DIMPLE

~~ON SURFACE~~ - BELOW ON

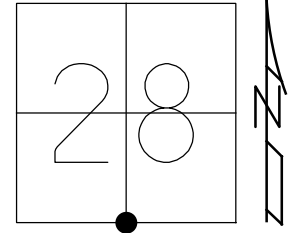
OFFSET ☉ PAVEMENT ON LT : RT

- TO - EDGE PAVEMENT 2.3' E. OF ☉ SR 19

STATION: 0+00

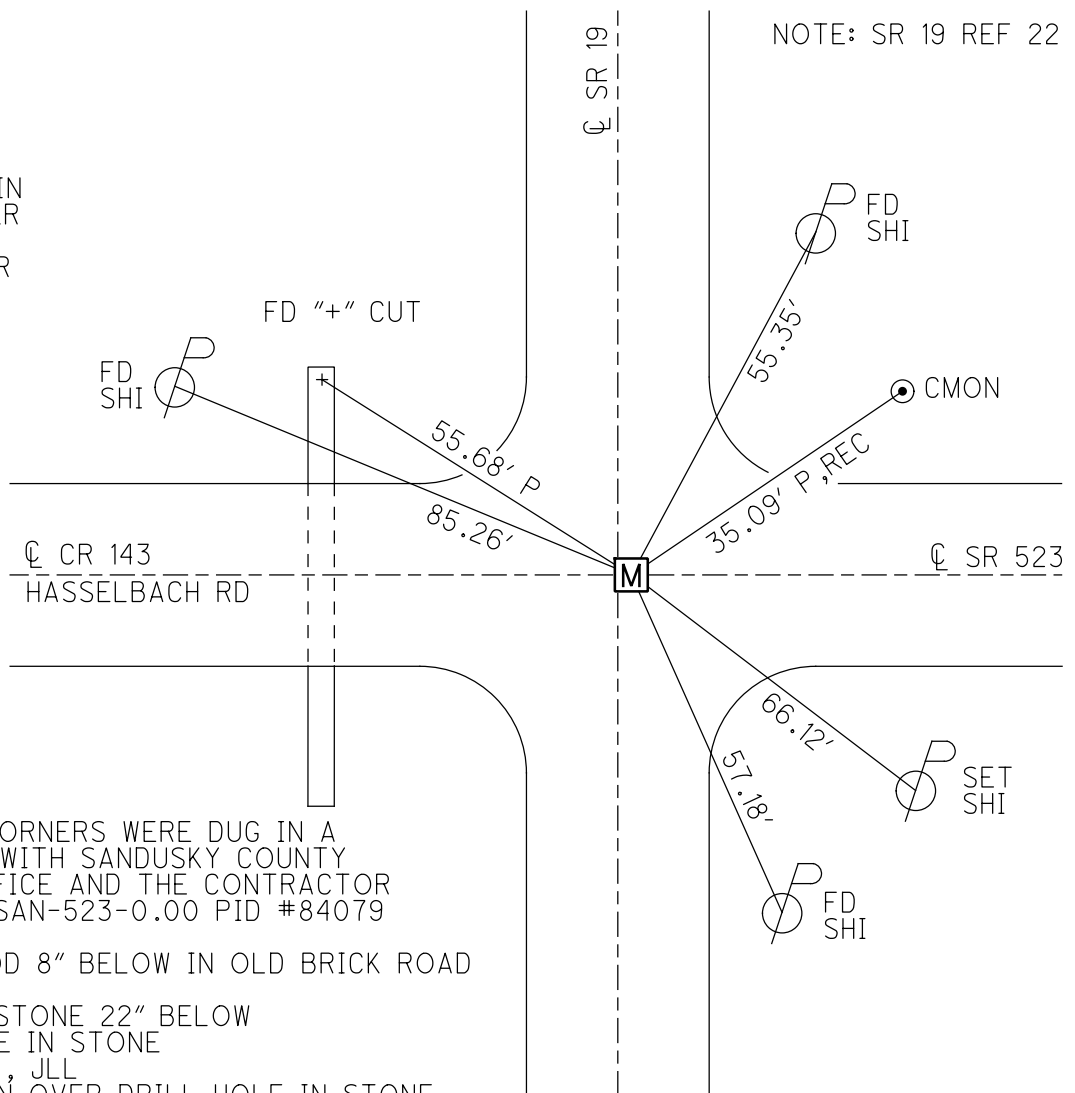
HORZ. DATUM: NAD83 (2011) GEOID: 2012A

GRID: NORTHING: 647870.460 EASTING: 1794319.400



RECORD:
 FD IPIN
 15" DOWN
 ATOP STONE
 6-10-80
 7/9/90, CRONIN
 FD P.K./WASHER
 7-15-93, RCC
 SET PK/WASHER
 8-3-93, RCC
 FD 1/2" IPIN
 8" DOWN
 REF01
 7-18-17, DCH
 FD MONBOX
 W/ 1" IPIN
 W/ DIMPLE
 NEWREF01
 12-13-18, JLL
 FD MONBOX
 NO LID
 3/19/19, JFO
 8/22/19, JMR

NOTE: SR 19 REF 22



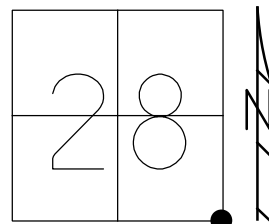
NOTE:
 ALL SECTION CORNERS WERE DUG IN A
 JOINT EFFORT WITH SANDUSKY COUNTY
 ENGINEER'S OFFICE AND THE CONTRACTOR
 IN JULY 2018. SAN-523-0.00 PID #84079

FD 1/2"x12" IROD 8" BELOW IN OLD BRICK ROAD
 CKREF01
 FD 10"x10"x15" STONE 22" BELOW
 SET DRILL HOLE IN STONE
 OREF01 7-25-18, JLL
 SET OFFSET PIN OVER DRILL HOLE IN STONE

O.D.O.T. DISTRICT 2 SURVEY OFFICE (USE ONLY)

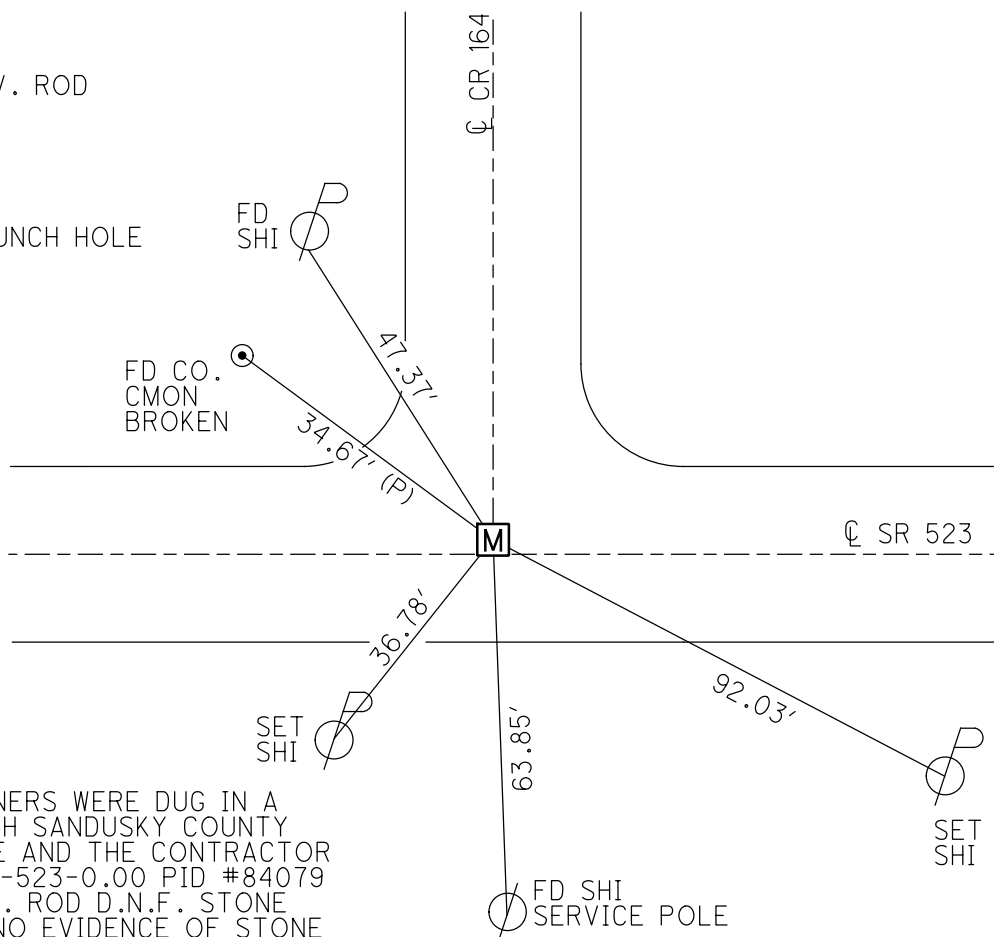
PERSONNEL _____ REFERENCE NO. 2 SHEET 2 OF 10
 NOTES MILLER DATE 12/13/18 ROUTE SR 523
 H.C. LEU WEATHER SUNNY COUNTY SANDUSKY
 R.C. MILLER TEMP. 38° TOWNSHIP RICE
 DWG BY MILLER PID 84079 SECTION 28
 T 6 N R 15 E

TYPE MONUMENT MON BOX W/ 1" IRON PIN W/ DIMPLE
 ON SURFACE - ~~BELOW~~ ON
 OFFSET 6.7' TO LT EDGE PAVEMENT
 STATION: 26+24



HORZ. DATUM: NAD83 (2011) GEOID: 2012A
 GRID: NORTHING: 647805.288 EASTING: 1796942.554

RECORD: P.I.
 FD PK/WASHER
 ATOP 1"x13" GALV. ROD
 ATOP STONE
 ±20" BELOW
 STA 26+24.43
 Δ=00°35'RT.
 10-17-86
 FD RR SPK W/ PUNCH HOLE
 7-15-1993
 SET PK/WASHER
 8-3-93, RCC
 FD MAG NAIL
 REF02
 7-18-17, DCH
 FD MON BOX
 W/ 1" IPIN
 W/ DIMPLE
 NEWREF02
 12-13-18, JLL
 FD MONBOX
 W/1" IPIN
 REF2
 10/1/20, JFO



NOTE:
 ALL SECTION CORNERS WERE DUG IN A
 JOINT EFFORT WITH SANDUSKY COUNTY
 ENGINEER'S OFFICE AND THE CONTRACTOR
 IN JULY 2018. SAN-523-0.00 PID #84079
 D.N.F. 1"x13" GALV. ROD D.N.F. STONE
 DUG 32"x2' HOLE NO EVIDENCE OF STONE
 OR HUB. SEEMS TO BE DESTROYED FROM
 PREVIOUS CULVERT CONSTRUCTION.
 POINT RE-ESTABLISHED BY
 SANDUSKY COUNTY ENGINEER'S OFFICE.
 7-25-18, JLL

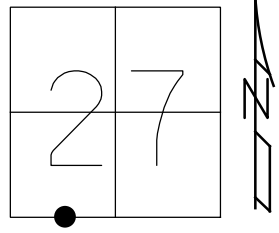
O.D.O.T. DISTRICT 2 SURVEY OFFICE (USE ONLY)

PERSONNEL _____ REFERENCE NO. 3 SHEET 3 OF 10
 NOTES MILLER DATE 12/13/18 ROUTE SR 523
 H.C. LEU WEATHER SUNNY COUNTY SANDUSKY
 R.C. MILLER TEMP. 75° TOWNSHIP RICE
 SECTION 27
 DWG BY MILLER PID 84079 T 6 N R 15 E

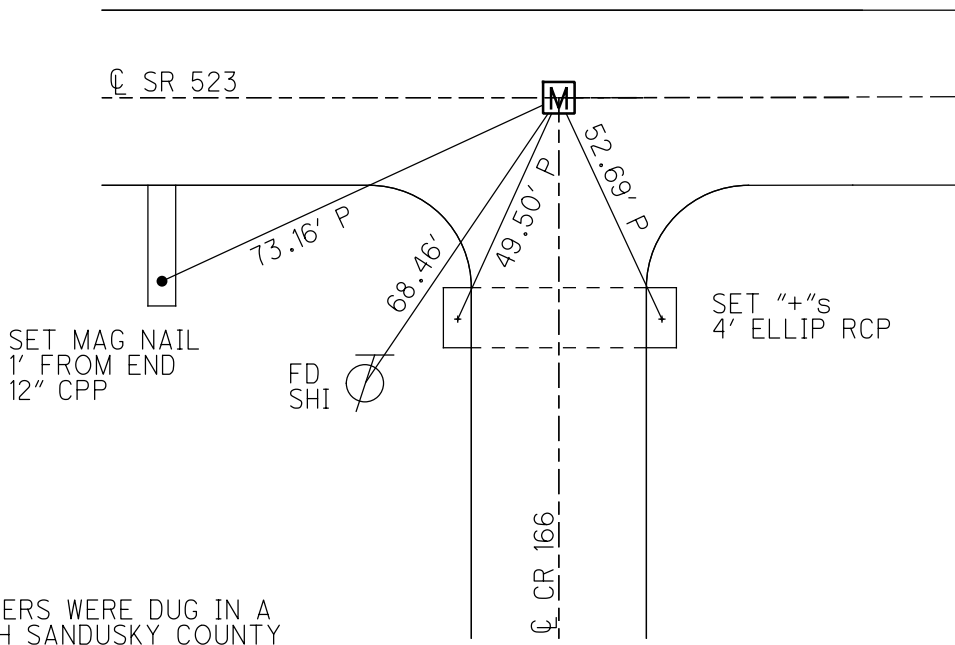
TYPE MONUMENT MON BOX W/ 1/2" I. ROD W/ DIMPLE

~~ON SURFACE~~ - BELOW 0.9'
 OFFSET 0.4' LT : ~~RT~~
9.5' TO LT EDGE PAVEMENT
 STATION: 39+43.8

HORZ. DATUM: NAD83 (2011) GEOID: 2012A
 GRID: NORTHING: 647759.596 EASTING: 1798261.480



RECORD:
 FD PK/WASHER
 ±3" DOWN
 ATOP 1/2" RE-ROD
 ±3" DOWN
 PER CO. REC.
 10-17-86
 FD PK/WASHER
 7-15-93, RCC
 SET PK/WASHER
 8-3-1993, RCC
 FD MAG NAIL
 1.5" DOWN
 7-18-17, DCH
 FD MON BOX
 W/ 1/2" IPIN
 W/ DIMPLE
 NEWREF03
 12-13-18, JLL
 FD MONBOX
 W/3/4" IPIN
 REF3
 10/1/20, JFO



NOTE:
 ALL SECTION CORNERS WERE DUG IN A
 JOINT EFFORT WITH SANDUSKY COUNTY
 ENGINEER'S OFFICE AND THE CONTRACTOR
 IN JULY 2018. SAN-523-0.00 PID #84079

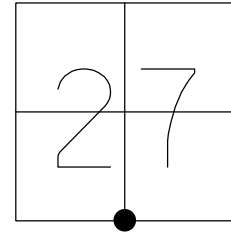
FD 1/2" SMOOTH IROD 10.5" BELOW
 OREF03 7-24-18, JLL
 USED

O.D.O.T. DISTRICT 2 SURVEY OFFICE (USE ONLY)

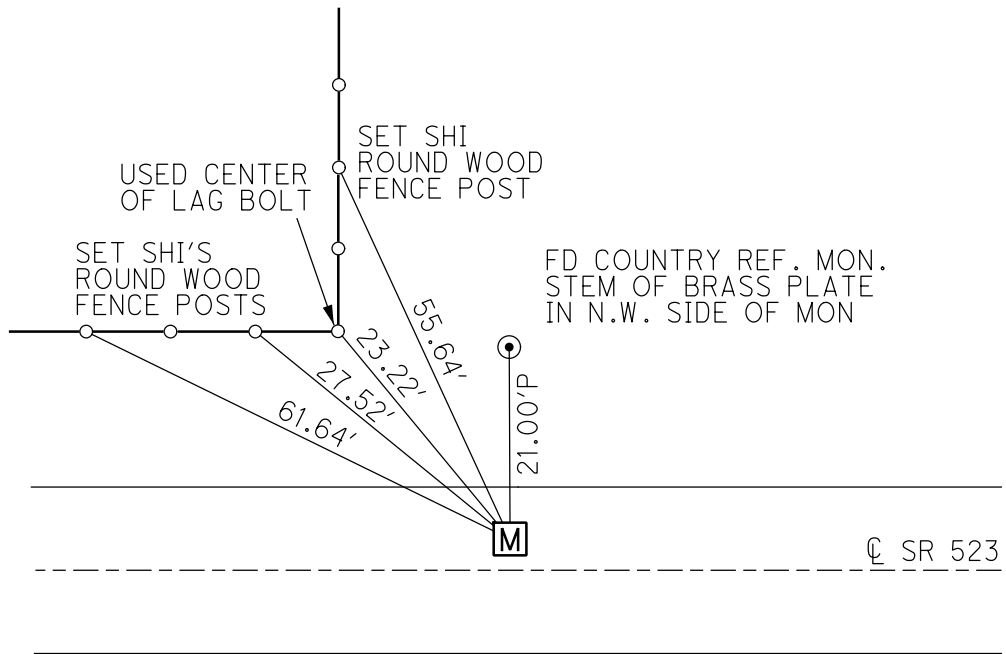
PERSONNEL _____ REFERENCE NO. 4 SHEET 4 OF 11
 NOTES MILLER DATE 12/13/18 ROUTE SR 523
 H.C. LEU WEATHER SUNNY COUNTY SANDUSKY
 R.C. MILLER TEMP. 35° TOWNSHIP RICE
 DWG BY MILLER PID 84079 SECTION 27
 T 6 N R 15 E

TYPE MONUMENT MONBOX W/ 1" IPIN W/ DIMPLE
 ON SURFACE - ~~BELOW~~ ON
 OFFSET ☐ PAVEMENT 4.5' LT : ~~RT~~
6' TO LT EDGE PAVEMENT
 STATION: 52+70.2

HORZ. DATUM: NAD83 (2011) GEOID: 2012A
 GRID: NORTHING: 647712.943 EASTING: 1799586.980



RECORD: P.I.
 STA 52+70.58
 $\Delta=00^{\circ}03'$ LT
 FD PK/WASHER
 ATOP PK/WASHER
 ATOP 1"x15"
 GALV. ROD
 ATOP IROD
 $\pm 18"$ DOWN
 10-17-86
 FD PK/WASHER
 7-15-93, RCC
 SET PK/WASHER
 8-3-93, RCC
 FD MAG NAIL
 7-18-17, DCH
 FD MON BOX
 W/ 1" IPIN
 W/ DIMPLE
 NEWREF04
 12-13-18, JLL



NOTE:
 ALL SECTION CORNERS WERE DUG IN A
 JOINT EFFORT WITH SANDUSKY COUNTY
 ENGINEER'S OFFICE AND THE CONTRACTOR
 IN JULY 2018. SAN-523-0.00 PID #84079

FD 1"x15" GALV. ROD 7.5" BELOW
 CKREF04
 FD 3/4"x4' SQUARE IROD 20" BELOW
 OREF04 7-24-18, JLL

O.D.O.T. DISTRICT 2 SURVEY OFFICE (USE ONLY)

PERSONNEL _____ REFERENCE NO. 5 SHEET 5 OF 11
 NOTES MILLER DATE 12/13/18 ROUTE SR 523
 H.C. LEU WEATHER SUNNY COUNTY SANDUSKY
 R.C. MILLER TEMP. 39° TOWNSHIP RICE
 DWG BY MILLER PID 84079 SECTION 27
 T 6 N R 15 E

TYPE MONUMENT MONBOX W/ 1" IPIN W/ DIMPLE

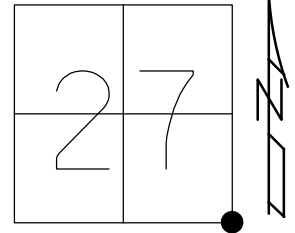
~~ON SURFACE~~ - BELOW 6"

OFFSET Q PAVEMENT 3.2' ~~±~~ : RT
7.3' TO RT EDGE PAVEMENT

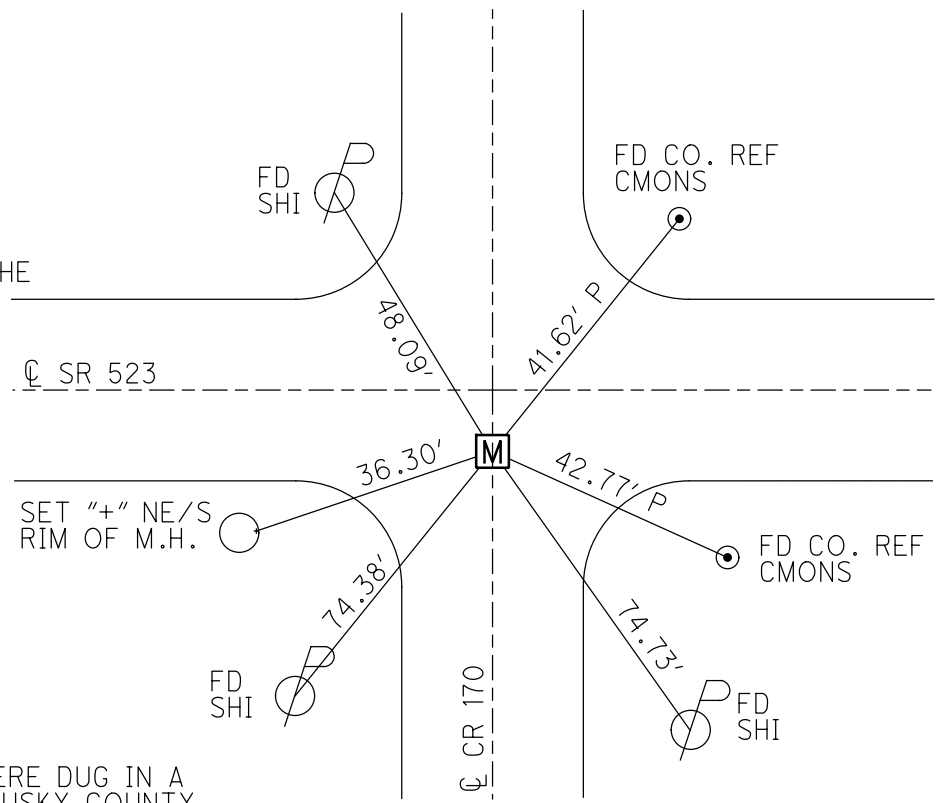
STATION: 79+31.3

HORZ. DATUM: NAD83 (2011) GEOID: 2012A

GRID: NORTHING: 647621.793 EASTING: 1802246.336



RECORD: P.I.
 STA 79+30.52
 Δ=01°40' LT
 FD PK/WASHER
 ATOP PK/WASHER
 ATOP 1"x10" GALV. ROD
 ATOP STONE
 ±18" DOWN
 10-17-86
 SET 3/4"x 3' IROD
 SET BY COUNTY 3" TO THE
 S.E. SIDE OF STONE
 NO RECORDED DATE
 FD PK/WASHER
 7-15-93
 SET PK/WASHER
 8-3-93, RCC
 FD 1" IPIN
 6" DOWN
 7-18-17, DCH
 FD MON BOX
 W/ 1" IPIN
 W/ DIMPLE
 NEWREF05
 12-13-18, JLL



NOTE:
 ALL SECTION CORNERS WERE DUG IN A
 JOINT EFFORT WITH SANDUSKY COUNTY
 ENGINEER'S OFFICE AND THE CONTRACTOR
 IN JULY 2018. SAN-523-0.00 PID #84079

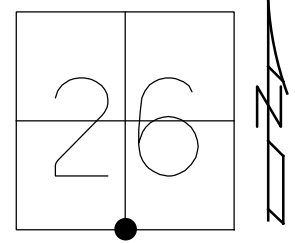
FD 1" GALV. ROD 7" BELOW
 CKREF05
 FD 3/4"x3' IPIN 13" BELOW 3" SE OF HIGH POINT OF STONE
 FD 6"x8" STONE 18" BELOW
 USED HIGHPOINT
 OREF05 7-24-18, JLL
 SET OFFSET PIN OVER HIGH POINT OF STONE

O.D.O.T. DISTRICT 2 SURVEY OFFICE (USE ONLY)

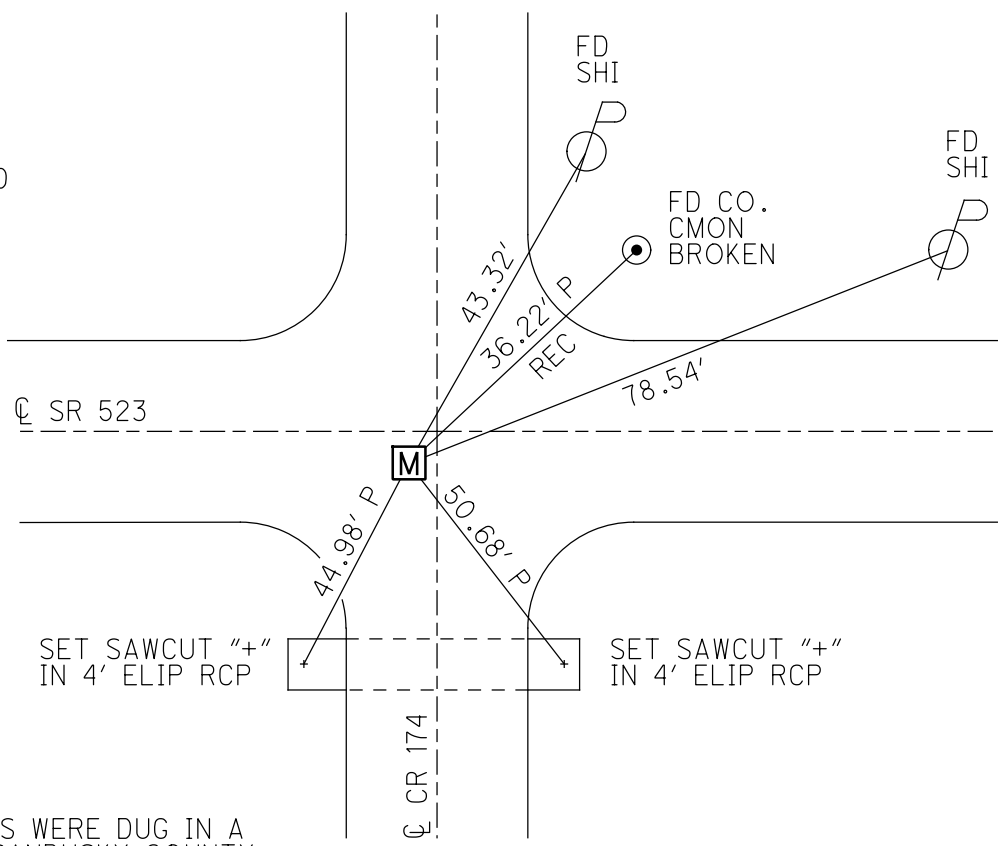
PERSONNEL _____ REFERENCE NO. 6 SHEET 6 OF 11
 NOTES MILLER DATE 12/13/18 ROUTE SR 523
 H.C. LEU WEATHER SUNNY COUNTY SANDUSKY
 R.C. MILLER TEMP. 32° TOWNSHIP RICE
 DWG BY MILLER PID 84079 SECTION 26
 T 6 N R 15 E

TYPE MONUMENT MONBOX W/ 1" IPIN W/ DIMPLE
 ON SURFACE - ~~BELOW~~ ON
 OFFSET Q PAVEMENT 1.3' ~~±~~ : RT
9.4' TO RT EDGE PAVEMENT
 STATION: 105+88.5

HORIZ.DATUM: NAD83 (2011) GEOID: 2012A
 GRID: NORTHING: 647607.838 EASTING: 1804903.371



RECORD: P.I.
 STA 105+88.75
 $\Delta=00^{\circ}01'$ RT
 FD PK/WASHER
 ATOP PK/WASHER
 ATOP 1"x17"GALV.ROD
 ATOP STONE
 ±22" DOWN
 10-17-86
 FD PK/WASHER
 7-15-93, RCC
 SET PK/WASHER
 8-3-93, RCC
 FD MAG/WASHER
 REF6
 7-18-17, DCH
 MON BOX
 W/ 1" IPIN
 W/ DIMPLE
 NEWREF06
 12-13-18, JLL



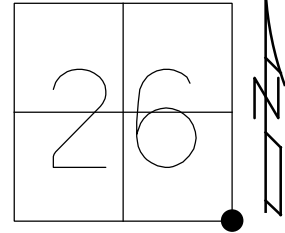
NOTE:
 ALL SECTION CORNERS WERE DUG IN A
 JOINT EFFORT WITH SANDUSKY COUNTY
 ENGINEER'S OFFICE AND THE CONTRACTOR
 IN JULY 2018. SAN-523-0.00 PID #84079

FD 1"x17" GALV. ROD 7" BELOW
 CKREF06
 FD 3/4" IROD 10" BELOW 0.15' NE
 FD 9"x10"x14" SANDSTONE 24" BELOW
 SET DRILL HOLE
 OREF06 7-24-18, JLL
 SET OFFSET PIN OVER DRILL HOLE IN STONE

O.D.O.T. DISTRICT 2 SURVEY OFFICE (USE ONLY)

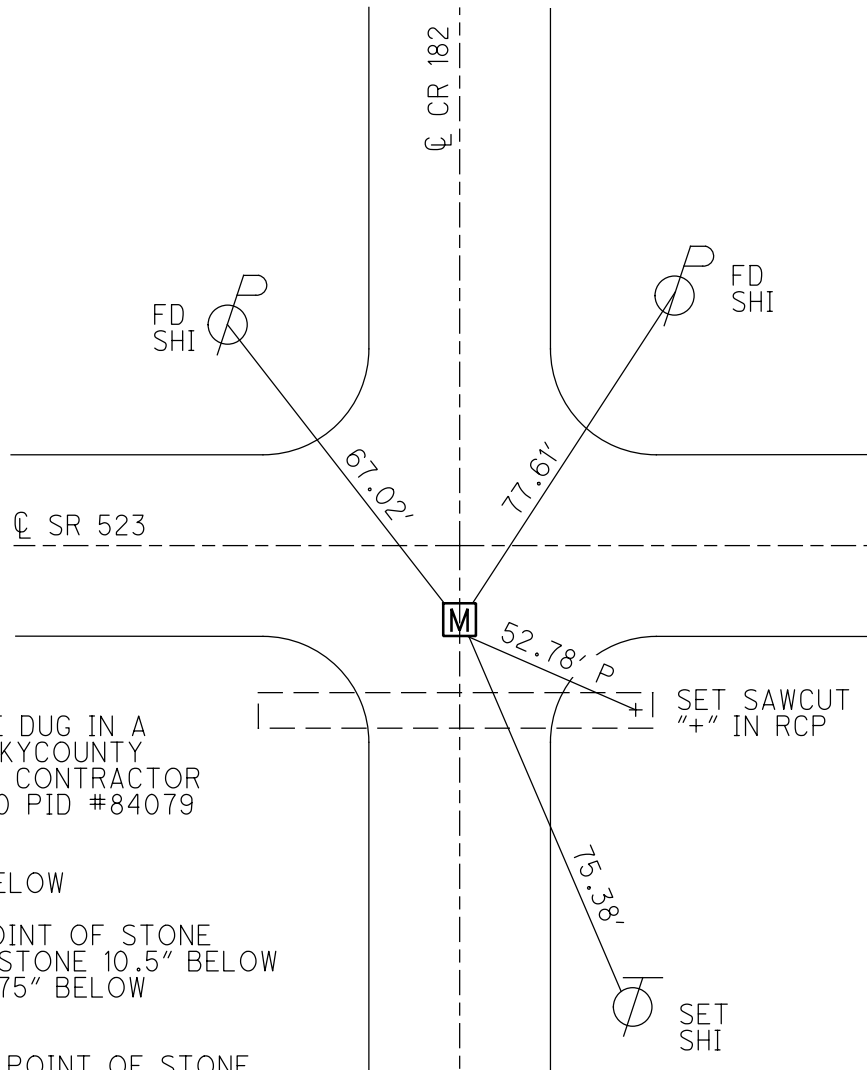
PERSONNEL _____ REFERENCE NO. 7 SHEET 7 OF 11
 NOTES MILLER DATE 12/10/18 ROUTE SR 523
 H.C. LEU WEATHER OVERCAST COUNTY SANDUSKY
 R.C. MILLER TEMP. 27° TOWNSHIP RICE
 SECTION 26
 DWG BY MILLER PID _____ T 6 N R 15 E

TYPE MONUMENT MONBOX W/ 1" IPIN W/ DIMPLE
 ON SURFACE - ~~BELOW~~ ON _____
 OFFSET \odot PAVEMENT 4.5' \pm : RT
5' TO RT EDGE PAVEMENT
 STATION: 132+43.4



HORZ.DATUM: NAD83 (2011) GEOID: 2012A
 GRID: NORTHING: 647594.096 EASTING: 1807558.066

RECORD:
 FD PK/WASHER
 ATOP 1"x14" GALV. ROD
 ATOP STONE
 ±22" DOWN
 FD R.R.SPIKE
 0.76' E. OF STONE &
 WAS SUPPOSED TO BE
 ATOP
 11-17-86
 FD PK/WASHER
 7-15-93, RCC
 FD MAG
 7-18-17, DCH
 FD MON BOX
 W/ 1" IPIN
 W/ DIMPLE
 NEWREF07
 12-10-18, JLL



NOTE:
 ALL SECTION CORNERS WERE DUG IN A
 JOINT EFFORT WITH SANDUSKY COUNTY
 ENGINEER'S OFFICE AND THE CONTRACTOR
 IN JULY 2018. SAN-523-0.00 PID #84079

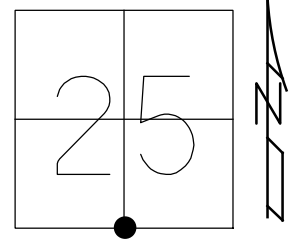
FD PK/WASHER 4.5" BELOW
 FD 1"x14" GALV. ROD 7.5" BELOW
 CKREF07
 FD WOOD HUB OVER HIGH POINT OF STONE
 NEXT TO AN IROD MARKING STONE 10.5" BELOW
 FD 4"x7"x10" LIMESTONE 21.75" BELOW
 USED HIGH POINT
 OREF07 7-24-18, JLL
 SET OFFSET PIN OVER HIGH POINT OF STONE

O.D.O.T. DISTRICT 2 SURVEY OFFICE (USE ONLY)

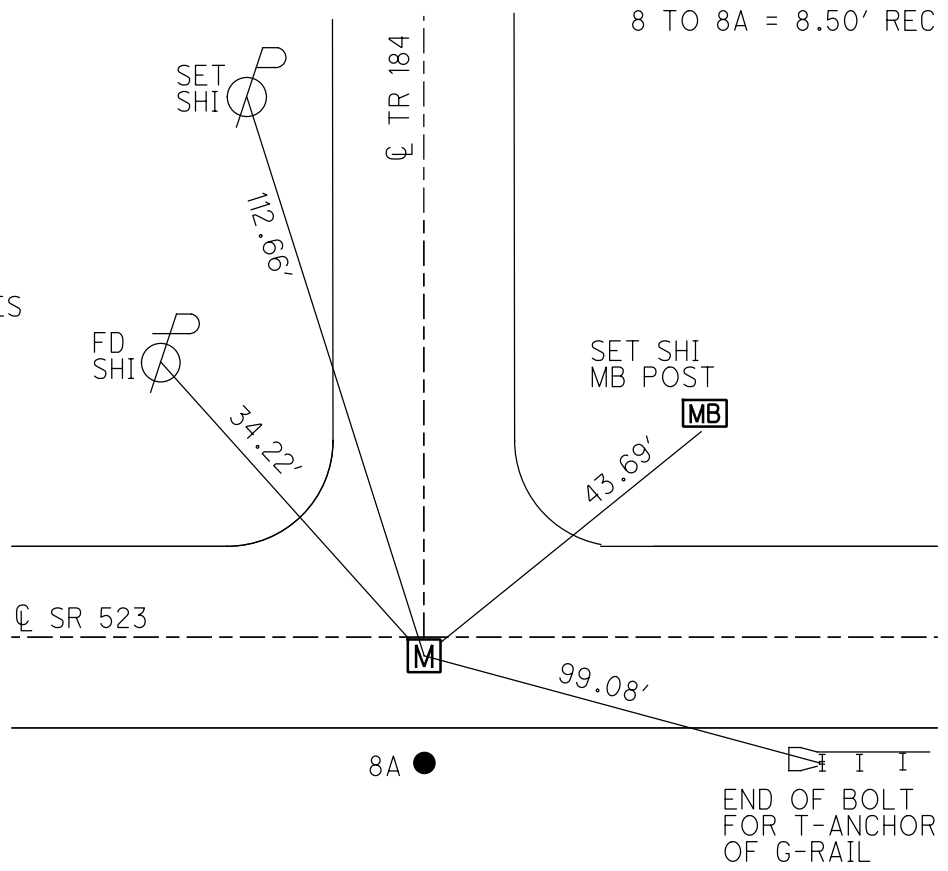
PERSONNEL _____ REFERENCE NO. 8 SHEET 8 OF 11
 NOTES MILLER DATE 12/10/18 ROUTE SR 523
 H.C. LEU WEATHER OVERCAST COUNTY SANDUSKY
 R.C. MILLER TEMP. 27° TOWNSHIP RICE
 DWG BY MILLER PID 84079 SECTION 25
 T 6 N R 15 E

TYPE MONUMENT MONBOX W/ 1" IPIPE
 ON SURFACE - ~~BELOW~~ ON
 OFFSET ☉ PAVEMENT 4' ~~±~~ : RT
5' TO RT EDGE PAVEMENT
 STATION: 159+00.9

HORIZ.DATUM: NAD83 (2011) GEOID: 2012A
 GRID: NORTHING: 647557.148 EASTING: 1810215.157



RECORD: P.I.
 STA 160+26.83
 $\Delta=00^{\circ}25'$ LT
 FD PK/WASHER
 ATOP SQ. HEAD SPIKE
 ATOP 1"x26.5" IPIPE
 DUG 6'X4' HOLE
 FD STAKE & TILE
 PIECES ONLY.
 REF BRIDGE PLANS
 ON FILE @ SAN CO ENG -
 FILE #64 ITEM 23, 2 PAGES
 10-20-86
 FD PK/WASHER
 7-15-93, RCC
 FD PK/WASHER
 REF08
 7-19-17, DCH
 FD MON BOX
 W/ 1" IPIPE
 NEWREF08
 12-10-18, JLL



NOTE:
 ALL SECTION CORNERS WERE DUG IN A
 JOINT EFFORT WITH SANDUSKYCOUNTY
 ENGINEER'S OFFICE AND THE CONTRACTOR
 IN JULY 2018. SAN-523-0.00 PID #84079
 FD 1" IPIPE 6.5" BELOW
 CKREF08 7-24-18, JLL

O.D.O.T. DISTRICT 2 SURVEY OFFICE (USE ONLY)

PERSONNEL

REFERENCE NO. 8 A

SHEET 9 OF 11

NOTES HOMAN DATE 08-26-2009
 H.C. HOMAN WEATHER CLOUDY
 R.C. ROUSOS TEMP. 80°

ROUTE SR 523
 COUNTY SANDUSKY
 TOWNSHIP RICE
 SECTION 25
 T 6 N R 15 E

DWG BY LEU PID 84079

TYPE MONUMENT D.N.F.- 3/4" IPIN

ON SURFACE - BELOW --

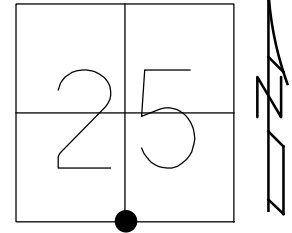
OFFSET ϕ PAVEMENT 12' \pm : RT

3' TO RT EDGE PAVEMENT

STATION: 159+00

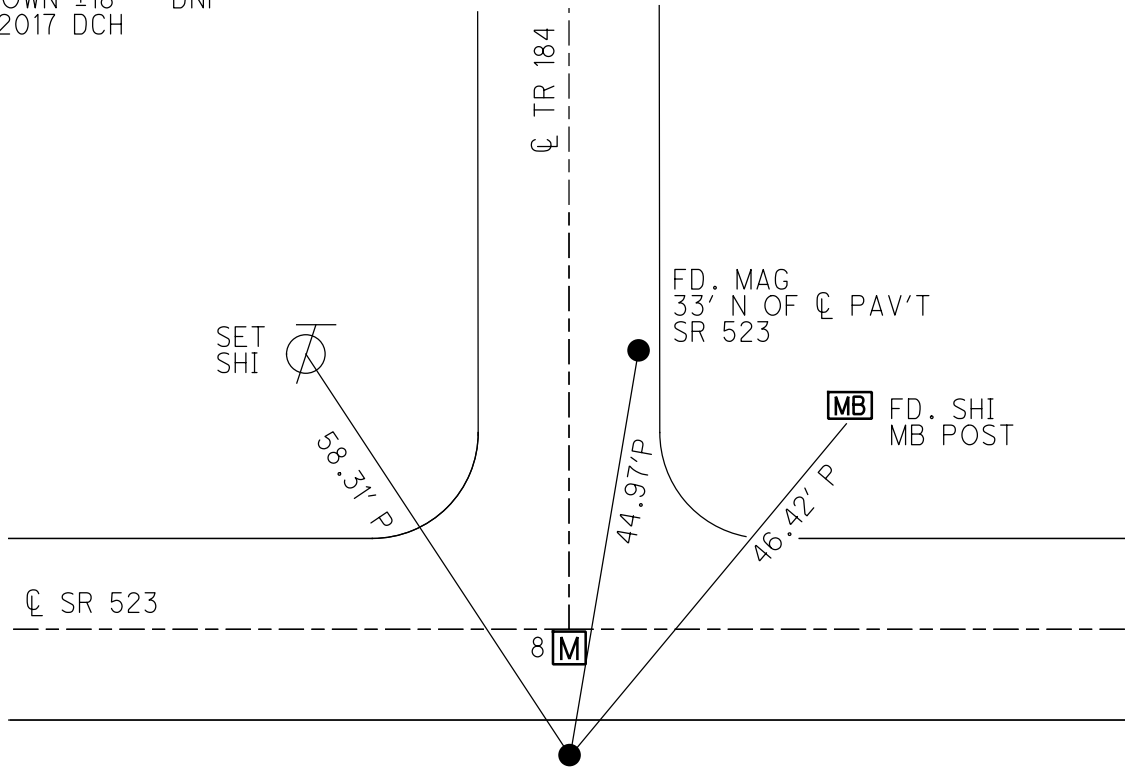
HORZ.DATUM: NAD83 (96) GEOID: 2003

GRID: NORTHING: 647548.726 EASTING: 1810214.392



8 TO 8A = 8.50'

RECORD:
 FD 3/4"x4' IPIN
 SET BY CO.
 USED AS 1/4 POST
 POINT FOUND IN ERROR
 USED BY PRIVATE SURVEYORS
 10-20-86
 DUG DOWN $\pm 18"$ - DNF
 JULY 2017 DCH



O.D.O.T. DISTRICT 2 SURVEY OFFICE (USE ONLY)

PERSONNEL

REFERENCE NO. 8 B

SHEET 10 OF 11

NOTES CRONIN DATE 4/14/82
 H.C. RIPPLE WEATHER SUNNY
 R.C. GEYMAN TEMP. 42°
MOSSER/BARBOUR

ROUTE SR 523
 COUNTY SANDUSKY
 TOWNSHIP RICE
 SECTION 25

DWG BY NIESE PID _____

T 6 N R 15 E

TYPE MONUMENT IPIN

~~ON SURFACE~~ - BELOW 6"

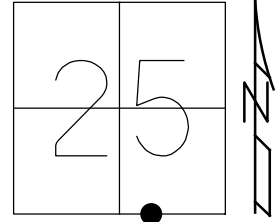
OFFSET \odot PAVEMENT _____ LT : RT

_____ TO _____ EDGE PAVEMENT

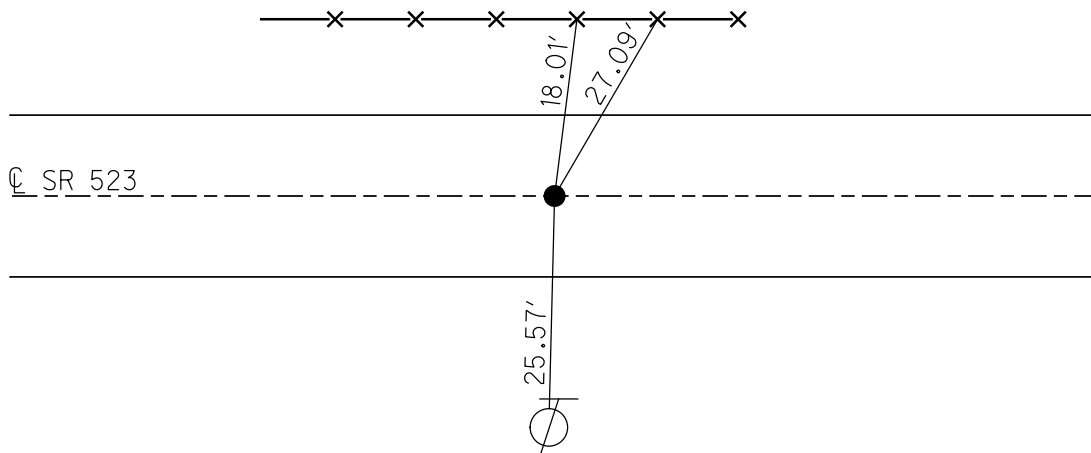
STATION: 168+26.83

HORZ. DATUM: _____ GEOID: _____

GRID: NORTHING: _____ EASTING: _____



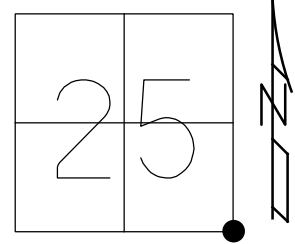
RECORD: P.O.T.
 STA 168+26.83
 FD IPIN
 6" BELOW
 SAME REF AS FOR
 STA 160+26.83
 4/14/82, CRONIN
 D.N.F.
 POINT IS 800'
 EAST OF REF8
 1993



O.D.O.T. DISTRICT 2 SURVEY OFFICE (USE ONLY)

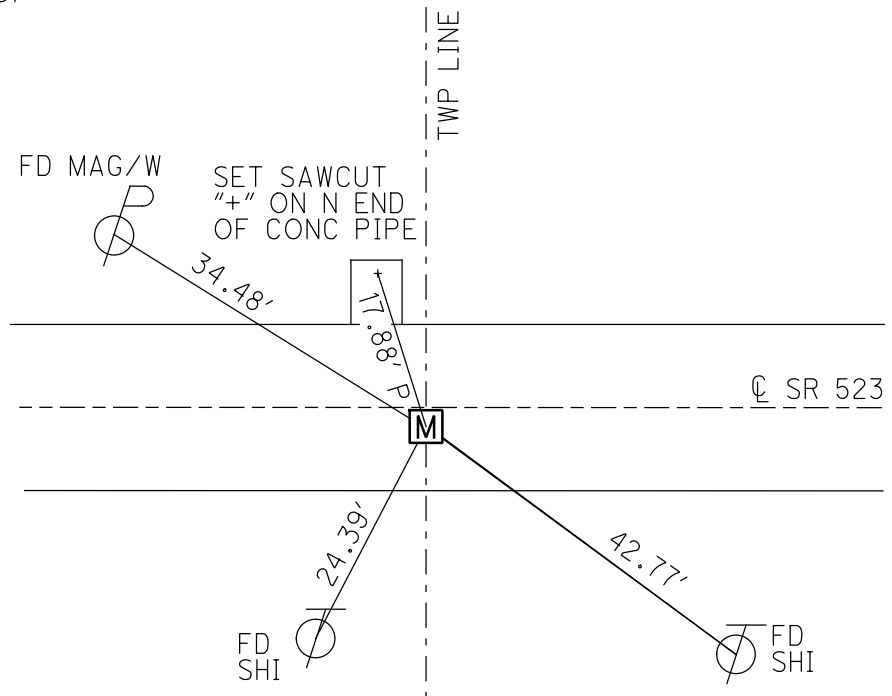
PERSONNEL _____ REFERENCE NO. 9 SHEET 11 OF 11
 NOTES MILLER DATE 12/10/18 ROUTE SR 523
 H.C. LEU WEATHER OVERCAST COUNTY SANDUSKY
 R.C. MILLER TEMP. 27° TOWNSHIP RICE
 DWG BY MILLER PID 84079 SECTION 25
 T 6 N R 15 E

TYPE MONUMENT MONBOX W/ 1" IPIN W/ DIMPLE
 ON SURFACE - ~~BELOW~~ ON
 OFFSET ☐ PAVEMENT 2.2' ~~±~~ : RT
8' TO RT. EDGE PAVEMENT
 STATION: 185+55.4



HORZ. DATUM: NAD83 (2011) GEOID: 2012A
 GRID: NORTHING: 647539.534 EASTING: 1812869.409

RECORD:
 FD PK/WASHER
 ATOP 1"x16" GALVANIZED ROD
 ATOP CMON WITH BRASS TOP
 ±24" DOWN
 SET BY L.C. ROUSH
 SAN.CO.ENGINEER 1941
 11-17-86
 FD PK NAIL
 3.5" BELOW
 7-15-93, RCC
 SET PK/WASHER
 8-3-93, RCC
 FD PK/WASHER
 REF09
 7-19-17, DCH
 FD MON BOX
 W/ 1" IPIN
 W/ DIMPLE
 NEWREF09
 12-10-18, JLL



NOTE:
 ALL SECTION CORNERS WERE DUG IN A
 JOINT EFFORT WITH SANDUSKY COUNTY
 ENGINEER'S OFFICE AND THE CONTRACTOR
 IN JULY 2018. SAN-523-0.00 PID #84079

FD PK 3.5" BELOW
 FD 1"x16" GALV. ROD 7.5" BELOW
 CKREF09
 FD HUB LAYING HORIZONTAL OVER TOP OF CMON
 FD CMON W/BRASS DISK W/DIMPLE 25.25" BELOW
 OREF09 7-24-18, JLL
 SET OFFSET PIN OVER CMON