

O.D.O.T. DISTRICT 2 SURVEY OFFICE (USE ONLY)

PERSONNEL

REFERENCE NO. 1

SHEET 1 OF 10

NOTES MILLER
 H.C. LEU
 R.C. MILLER

DATE 12/13/18
 WEATHER SUNNY
 TEMP. 43°

ROUTE SR 523
 COUNTY SANDUSKY
 TOWNSHIP RICE
 SECTION 28
 T 6 N R 15 E

DWG BY AUBLE PID 84079

TYPE MONUMENT MONBOX W/IPIN W/DIMPLE

~~ON SURFACE~~ - BELOW ON

OFFSET C PAVEMENT ON LT : RT

- TO - EDGE PAVEMENT 2.3' E. OF C SR 19

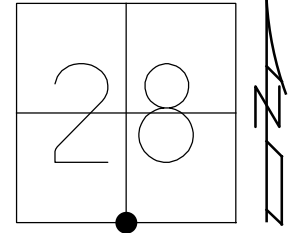
STATION: 0+00

HORZ. DATUM: NAD83 (2011)

GEOID: 2012A

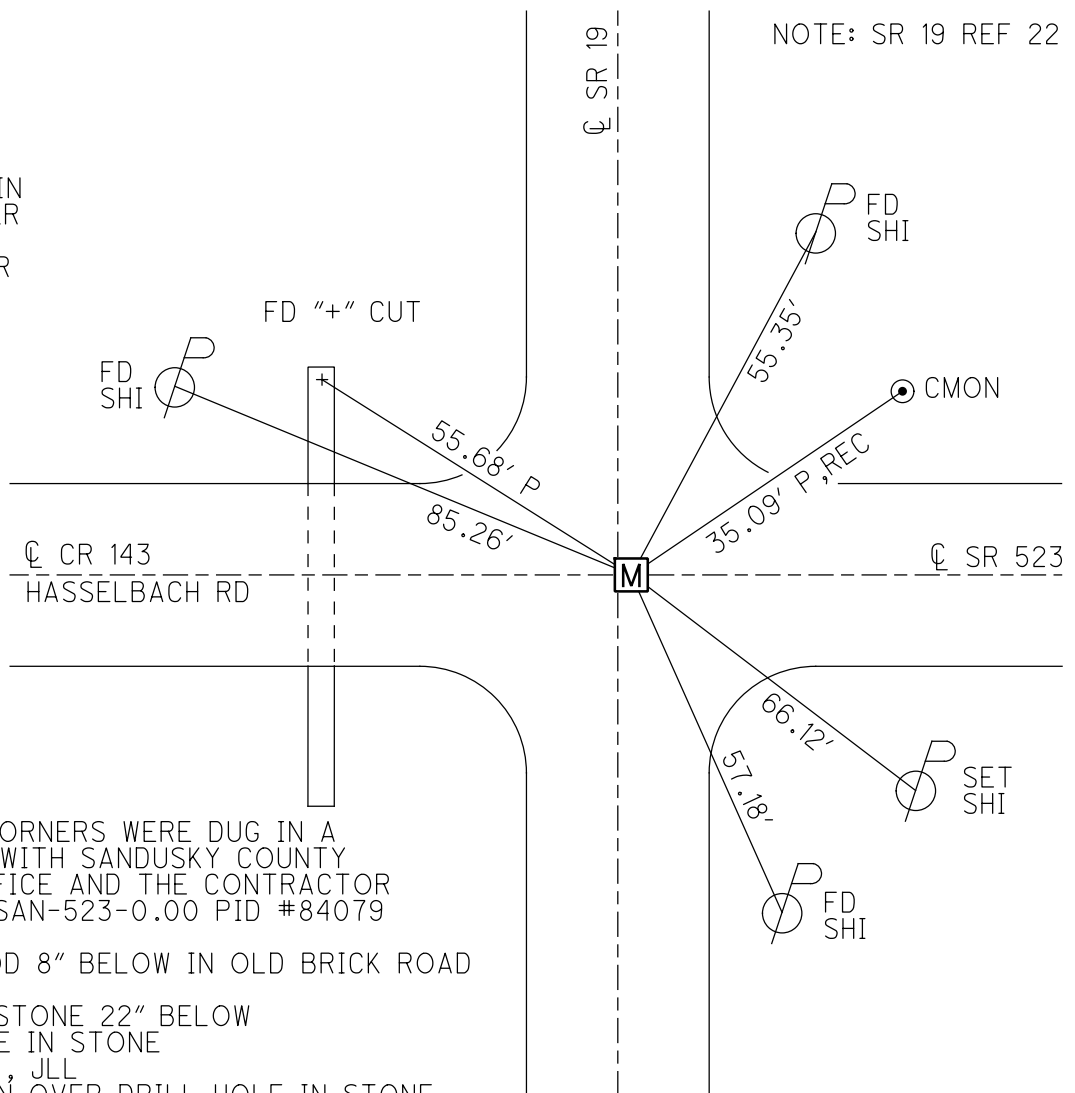
GRID: NORTHING: 647870.460

EASTING: 1794319.400



RECORD:
 FD IPIN
 15" DOWN
 ATOP STONE
 6-10-80
 7/9/90, CRONIN
 FD P.K./WASHER
 7-15-93, RCC
 SET PK/WASHER
 8-3-93, RCC
 FD 1/2" IPIN
 8" DOWN
 REF01
 7-18-17, DCH
 FD MONBOX
 W/ 1" IPIN
 W/ DIMPLE
 NEWREF01
 12-13-18, JLL
 FD MONBOX
 NO LID
 3/19/19, JFO
 8/22/19, JMR

NOTE: SR 19 REF 22



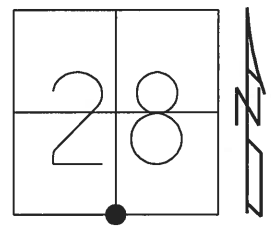
NOTE:
 ALL SECTION CORNERS WERE DUG IN A
 JOINT EFFORT WITH SANDUSKY COUNTY
 ENGINEER'S OFFICE AND THE CONTRACTOR
 IN JULY 2018. SAN-523-0.00 PID #84079

FD 1/2"x12" IROD 8" BELOW IN OLD BRICK ROAD
 CKREF01
 FD 10"x10"x15" STONE 22" BELOW
 SET DRILL HOLE IN STONE
 OREF01 7-25-18, JLL
 SET OFFSET PIN OVER DRILL HOLE IN STONE

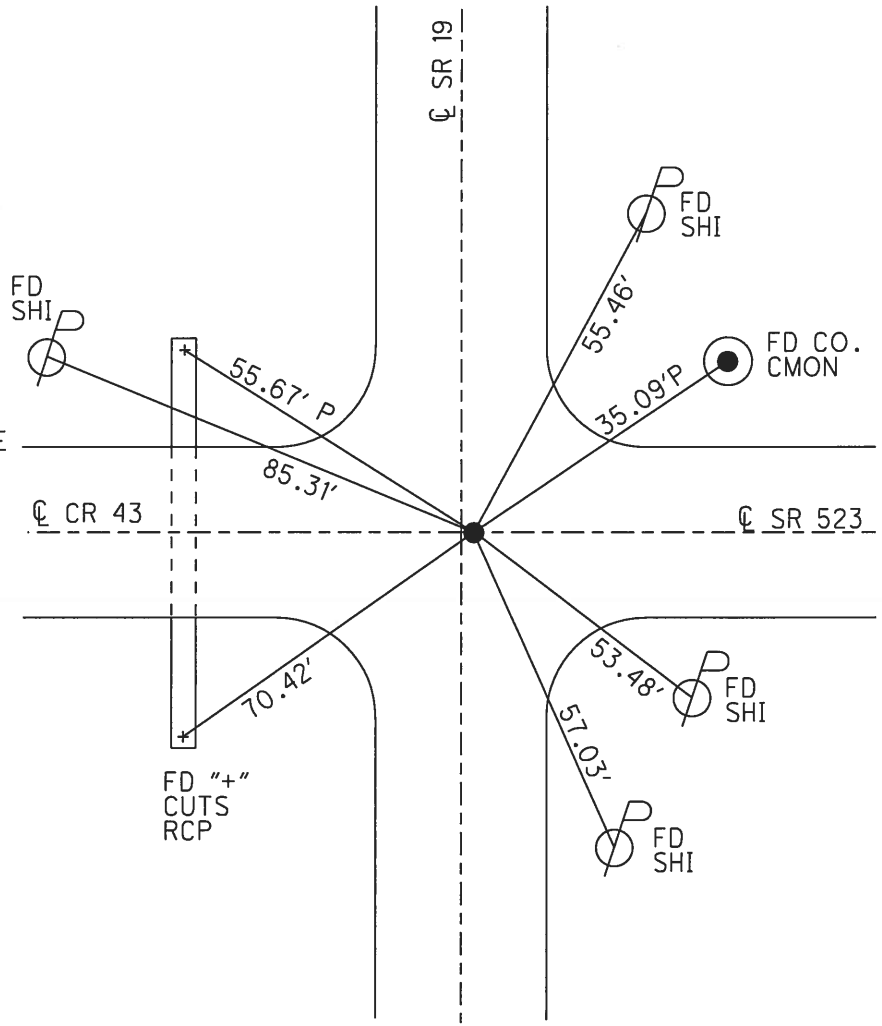
O.D.O.T. DISTRICT 2 SURVEY OFFICE (USE ONLY)

PERSONNEL _____ REFERENCE NO. 1 SHEET 1 OF 10
 NOTES HOMAN DATE 7-18-17 ROUTE SR 523
 H.C. HOMAN WEATHER SUNNY COUNTY SANDUSKY
 R.C. CARSON TEMP. 75° TOWNSHIP RICE
 DWG BY HAGEMEYER PID 84079 SECTION 28
 T 6 N R 15 E

TYPE MONUMENT 1/2" IPIN
~~ON SURFACE~~ - BELOW 8"
 OFFSET Q PAVEMENT ON, 2.5 E Q SR 19 LT : RT
- TO - EDGE PAVEMENT
 STATION: 0+00
 HORZ. DATUM: - GEOID: -
 GRID: NORTHING: 647870.324 EASTING: 1794319.308



RECORD:
 FD IPIN
 8"± BELOW
 ATOP STONE
 6-10-80
 FD P.K./WASHER
 7/15/93, RCC
 SET P.K./WASHER
 8-3-93, RCC
 FD 1/2" IPIN
 8" DOWN
 REF01
 7/18/17, DCH
 FD 1/2"x12" IPIN
 8" BELOW IN
 OLD BRICK ROAD
 CKREF01
 FD 10"x10"x15" STONE
 22" BELOW
 SET DRILL HOLE
 IN STONE
 REF01
 7-25-18, JLL



O.D.O.T. DISTRICT 2 SURVEY OFFICE

PERSONNEL

REFERENCE NO. 1

SHEET 1 OF 9

NOTES CHENEY

H.C. RIPPLE

R.C. GEYMAN

DATE 7-15-1993

WEATHER FAIR

TEMP. 75°

ROUTE #523

COUNTY SANDUSKY

TOWNSHIP RICE

SECTION 28 & 33

T. & N. R. 15 E

TYPE MONUMENT PK/WASHER

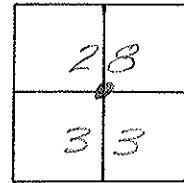
ON SURFACE - ~~BELOW~~ ON

LEFT - ℄ PAV'T. - RIGHT

— TO — EDGE PAVEMENT

S.L.M. 0+00

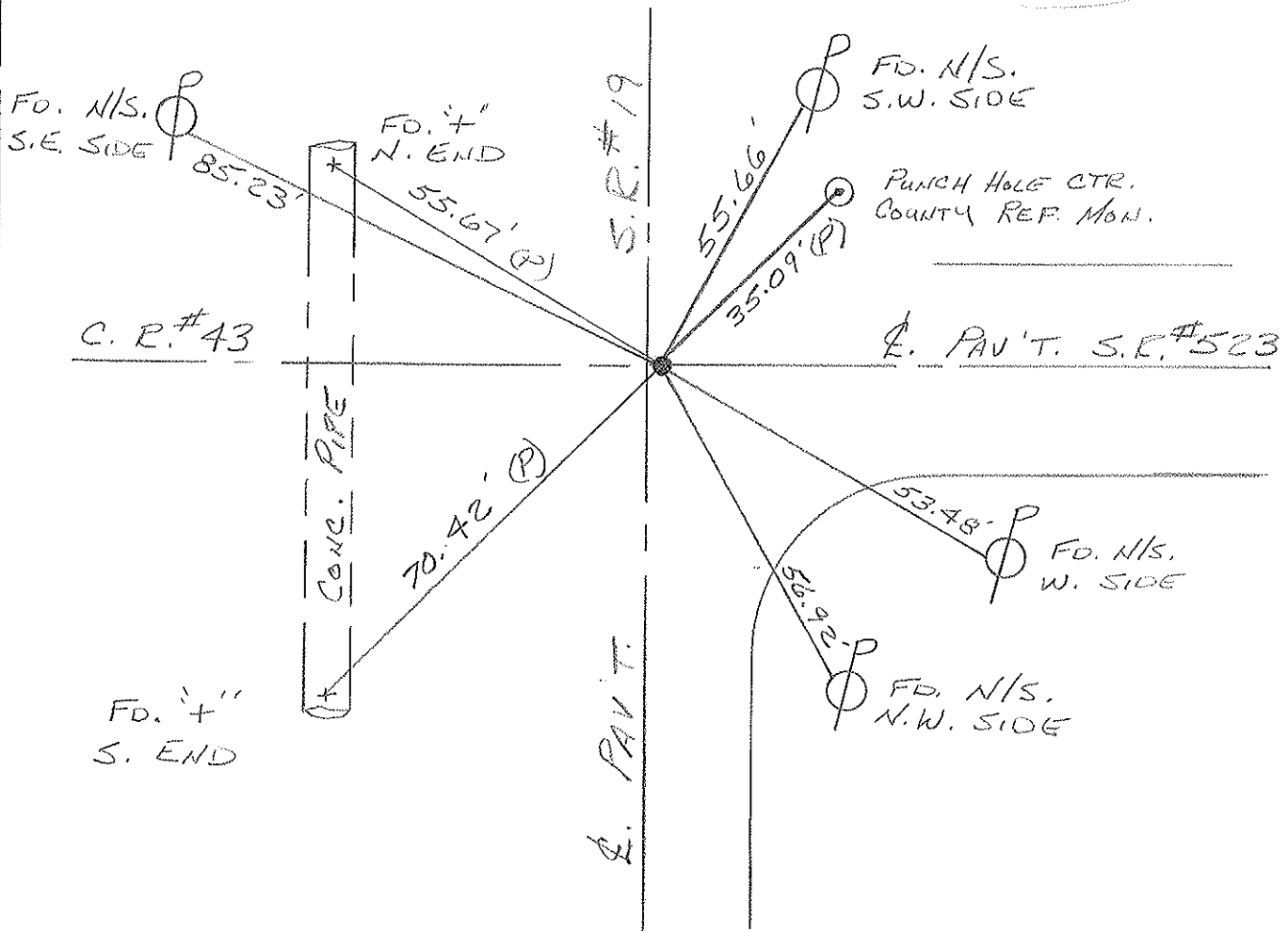
ON E. SR 523
2.5' E. E. SR 19



RECORD: 6-10-1980

IRON ROD 8" BELOW
SURFACE ATOP STONE

SET PK/WASHER
8-3-1993
RCC



Resurfaced 1993

O.D.O.T. DISTRICT 2 SURVEY OFFICE

PERSONNEL

REFERENCE NO. 1

SHEET 1 OF 9

NOTES Cronin

DRAWN 11/17/86

H.C. _____

DATE 6/10/80

R.C. _____

WEATHER _____

TEMP. _____

ROUTE #523

COUNTY Sandusky

TOWNSHIP Rice

SECTION 28 & 33

T. 6 N. R. 15 E

TYPE MONUMENT T. Rod

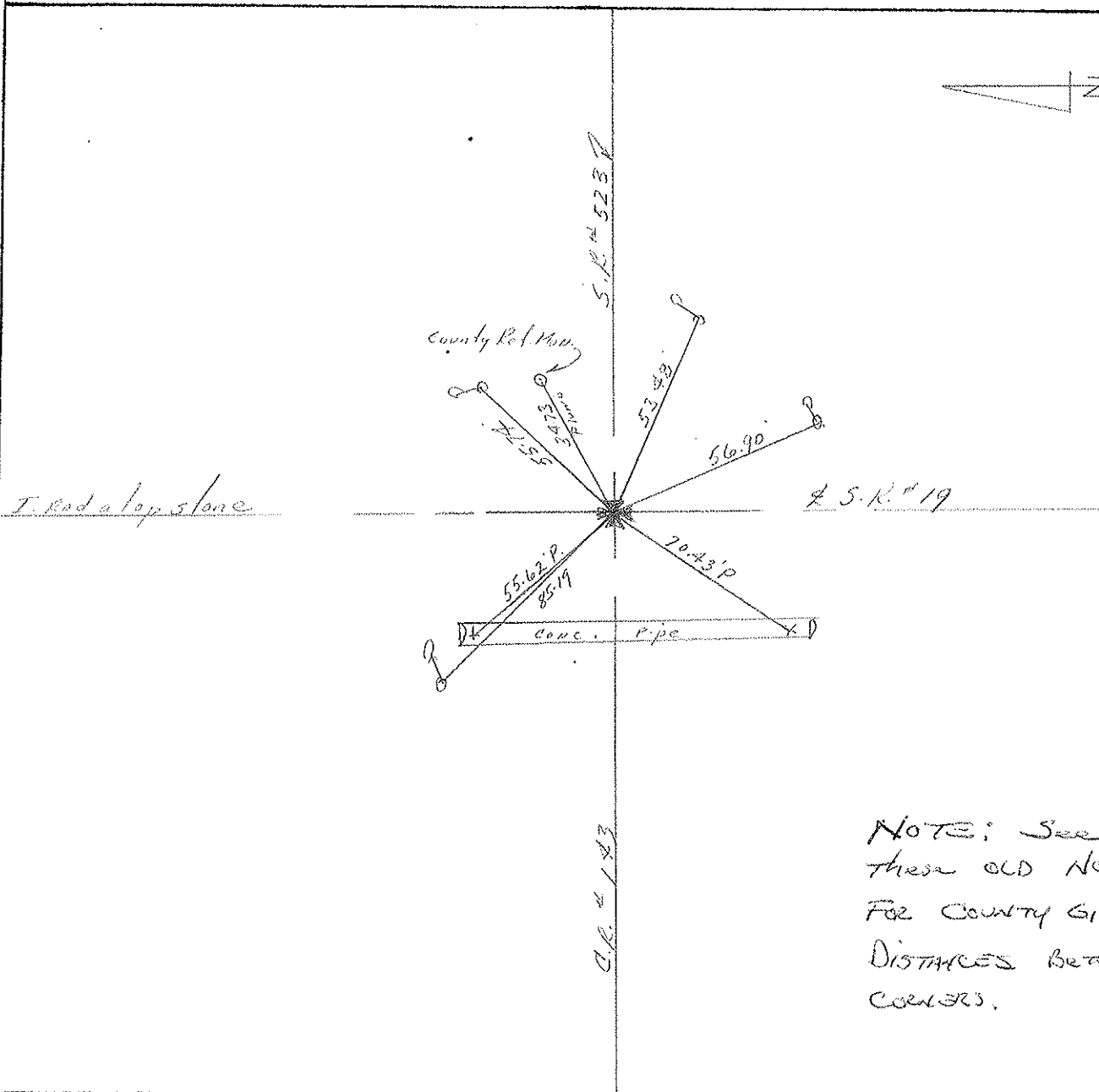
ON SURFACE - BELOW 8" below surface

LEFT - € PAV'T. - RIGHT q Pav't.

TO _____ EDGE PAVEMENT

S.L.M. _____

2	8
3	3

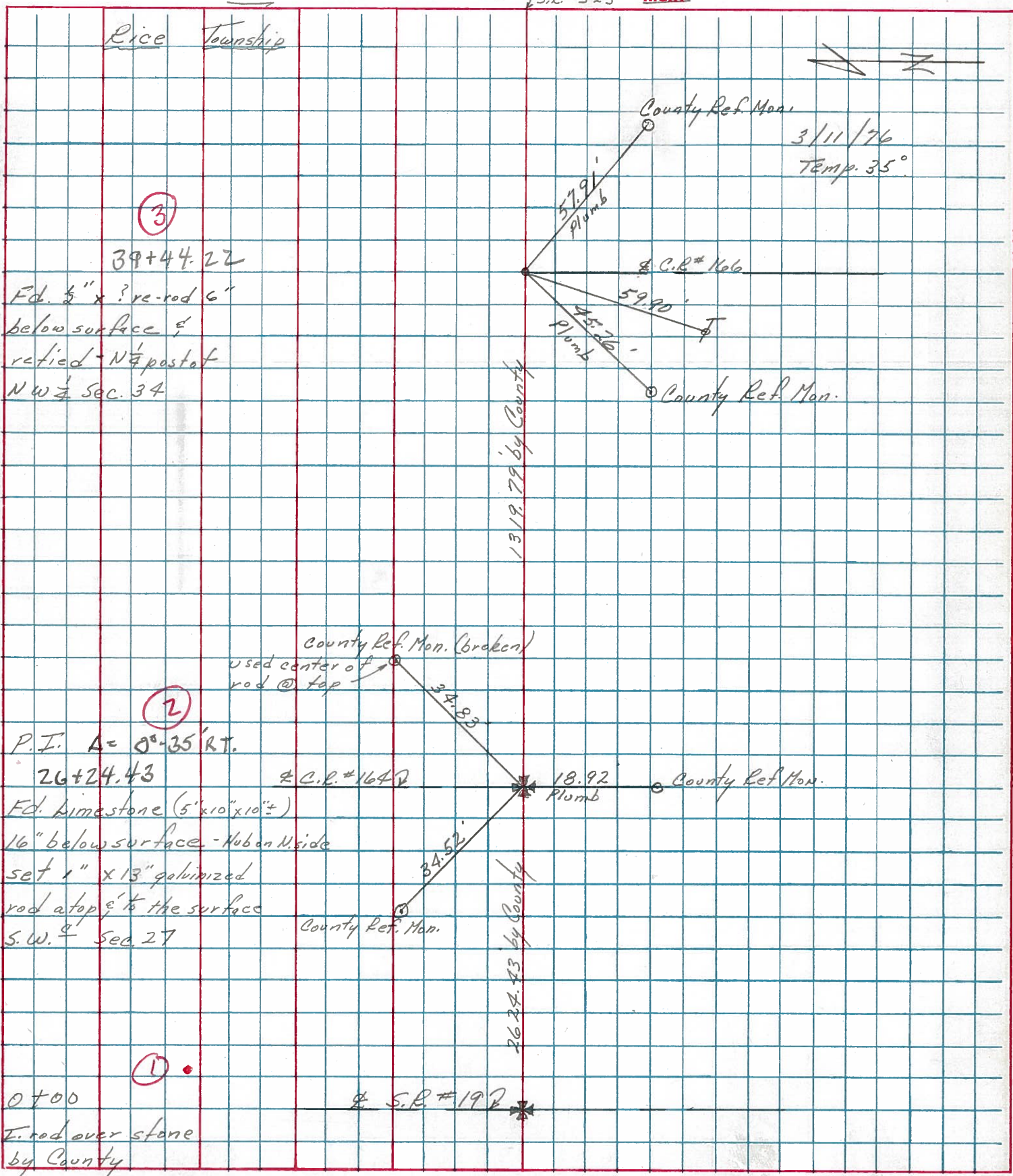


NOTE: See these OLD NOTES FOR COUNTY GIVEN DISTANCES BETWEEN CORNERS.

PERSONNEL	TITLE	PERSONNEL	TITLE
Cronin		Schneider	
Ripple		Mosser	
Geyman		Barbour	

COUNTY Sandusky
 S. R. # 523
 SEC. S.R. #19 to S.R. #53
 WEATHER cloudy
 TEMP. 47°

DESCRIPTION Ties for Control Points JOB NO. _____



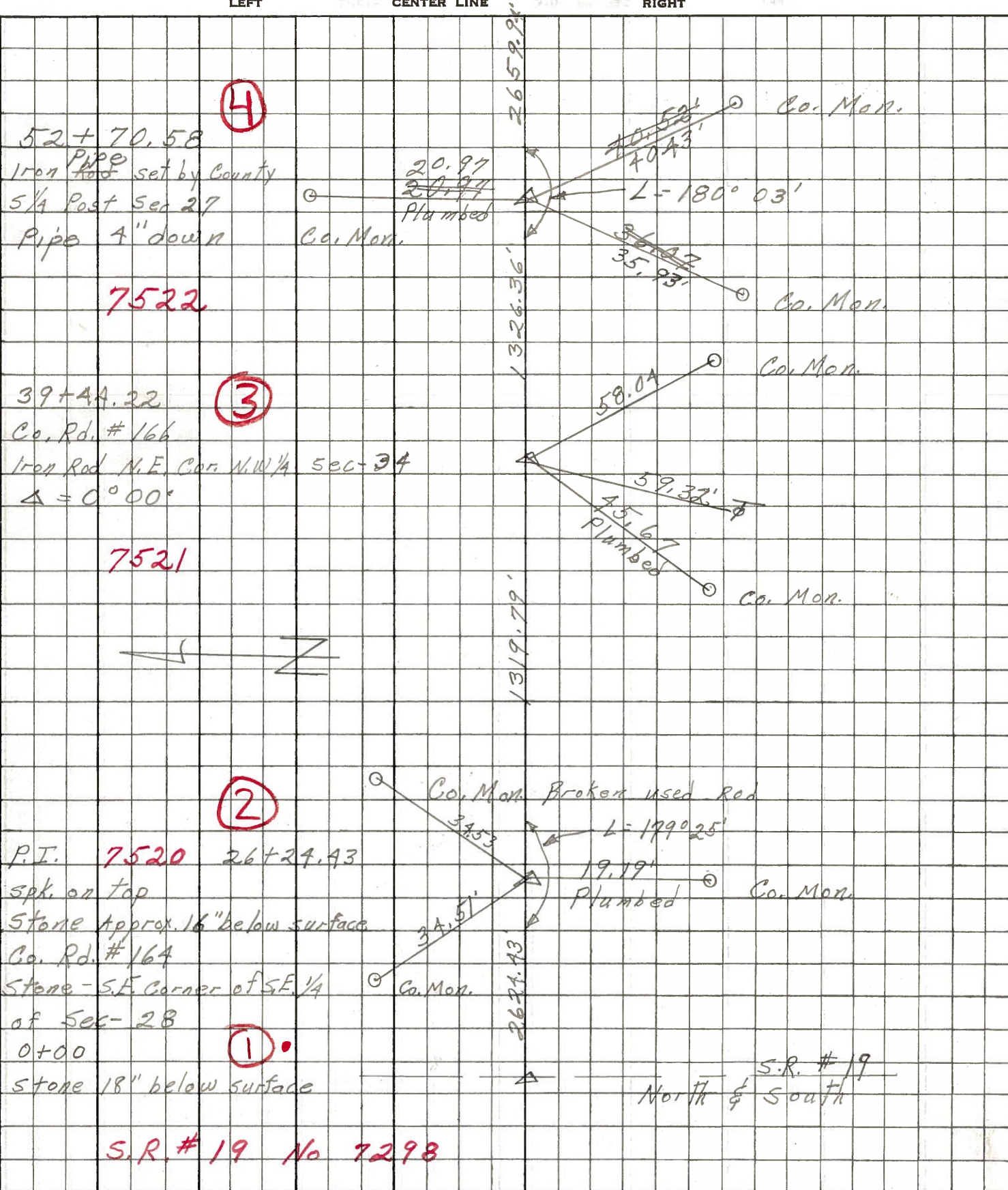
PERSONNEL TITLE PERSONNEL TITLE

Schneider Potts COUNTY Sandusky DATE 4-25-68

Barbour WEATHER Cloudy

REDDING SEC. S.R.# 19 to S.R.# 53 TEMP. 30°

DESCRIPTION Ties for Control Points JOB NO.



S.R. # 19 No 7298

North & South S.R. # 19

PERSONNEL TITLE PERSONNEL TITLE COUNTY SANDUSKY DATE Nov. 19, 1963
Swordan _____
Bowers _____ S. R. #523 WEATHER Clear
Jamison _____ SEC. _____ TEMP. +50°

DESCRIPTION Control Points JOB NO. _____

