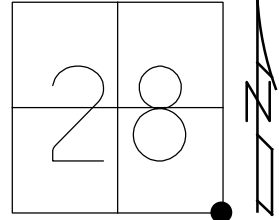


O.D.O.T. DISTRICT 2 SURVEY OFFICE (USE ONLY)

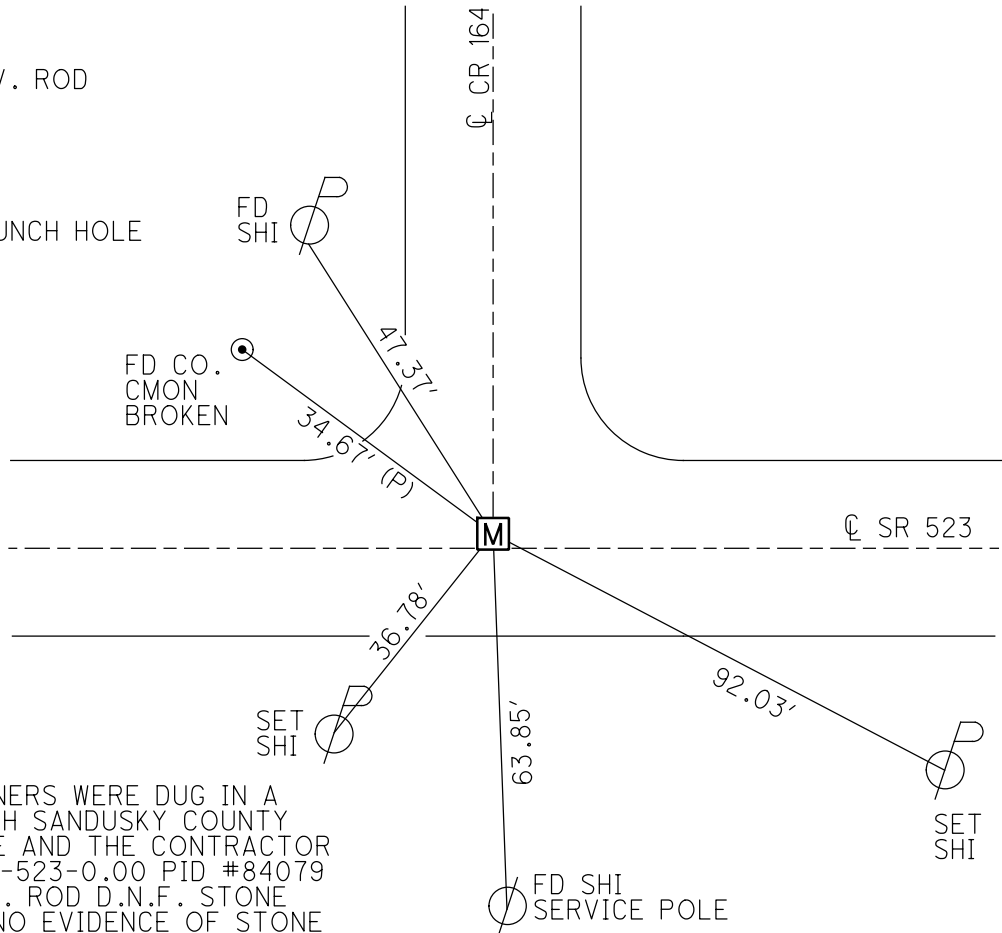
PERSONNEL \_\_\_\_\_ REFERENCE NO. 2 SHEET 2 OF 10  
 NOTES MILLER DATE 12/13/18 ROUTE SR 523  
 H.C. LEU WEATHER SUNNY COUNTY SANDUSKY  
 R.C. MILLER TEMP. 38° TOWNSHIP RICE  
 DWG BY MILLER PID 84079 SECTION 28  
 T 6 N R 15 E

TYPE MONUMENT MON BOX W/ 1" IRON PIN W/ DIMPLE  
 ON SURFACE - ~~BELOW~~ ON  
 OFFSET 6.7' TO LT EDGE PAVEMENT  
 STATION: 26+24



HORZ. DATUM: NAD83 (2011) GEOID: 2012A  
 GRID: NORTHING: 647805.288 EASTING: 1796942.554

RECORD: P.I.  
 FD PK/WASHER  
 ATOP 1"x13" GALV. ROD  
 ATOP STONE  
 ±20" BELOW  
 STA 26+24.43  
 Δ=00°35'RT.  
 10-17-86  
 FD RR SPK W/ PUNCH HOLE  
 7-15-1993  
 SET PK/WASHER  
 8-3-93, RCC  
 FD MAG NAIL  
 REF02  
 7-18-17, DCH  
 FD MON BOX  
 W/ 1" IPIN  
 W/ DIMPLE  
 NEWREF02  
 12-13-18, JLL  
 FD MONBOX  
 W/1" IPIN  
 REF2  
 10/1/20, JFO

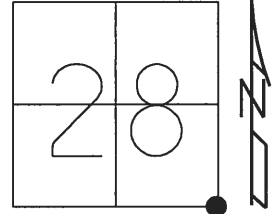


NOTE:  
 ALL SECTION CORNERS WERE DUG IN A  
 JOINT EFFORT WITH SANDUSKY COUNTY  
 ENGINEER'S OFFICE AND THE CONTRACTOR  
 IN JULY 2018. SAN-523-0.00 PID #84079  
 D.N.F. 1"x13" GALV. ROD D.N.F. STONE  
 DUG 32"x2' HOLE NO EVIDENCE OF STONE  
 OR HUB. SEEMS TO BE DESTROYED FROM  
 PREVIOUS CULVERT CONSTRUCTION.  
 POINT RE-ESTABLISHED BY  
 SANDUSKY COUNTY ENGINEER'S OFFICE.  
 7-25-18, JLL

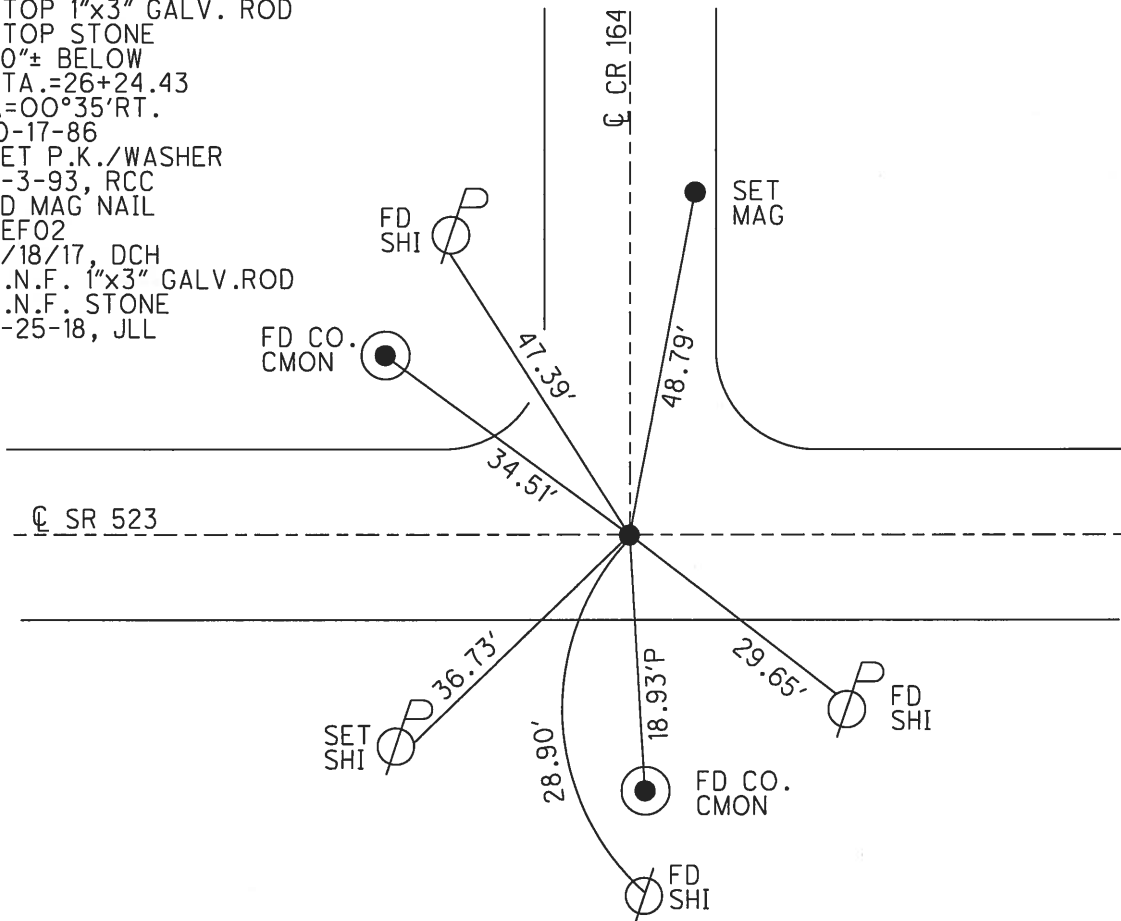
O.D.O.T. DISTRICT 2 SURVEY OFFICE (USE ONLY)

PERSONNEL \_\_\_\_\_ REFERENCE NO. 2 SHEET 2 OF 10  
 NOTES HOMAN DATE 7-18-17 ROUTE SR 523  
 H.C. HOMAN WEATHER SUNNY COUNTY SANDUSKY  
 R.C. CARSON TEMP. 75° TOWNSHIP RICE  
 DWG BY HAGEMEYER PID 84079 SECTION 28  
 T 6 N R 15 E

TYPE MONUMENT MAG NAIL  
 ON SURFACE - ~~BELOW~~ ON \_\_\_\_\_  
 OFFSET  $\bar{C}$  PAVEMENT 1' LT : ~~RT~~  
10' TO RT EDGE PAVEMENT  
 STATION: 26+31  
 HORZ.DATUM: - GEOID: -  
 GRID: NORTHING: 647805.219 EASTING: 1796942.304



RECORD: P.I.  
 FD P.K./WASHER  
 ATOP 1"x3" GALV. ROD  
 ATOP STONE  
 20"± BELOW  
 STA.=26+24.43  
 $\Delta=00^{\circ}35'RT.$   
 10-17-86  
 SET P.K./WASHER  
 8-3-93, RCC  
 FD MAG NAIL  
 REF02  
 7/18/17, DCH  
 D.N.F. 1"x3" GALV. ROD  
 D.N.F. STONE  
 7-25-18, JLL



# O.D.O.T. DISTRICT 2 SURVEY OFFICE

PERSONNEL \_\_\_\_\_

REFERENCE NO. 2

SHEET 2 OF 9

NOTES CHENEY

H.C. RIPPLE

R.C. GEYMAN

DATE 7-15-1993

WEATHER FAIR

TEMP. 75°

ROUTE #523

COUNTY SANDUSKY

TOWNSHIP RICE

SECTION 27, 28, 33 & 34

T 6 N R 15 E

TYPE MONUMENT RR. SPK. (PUNCH HOLE)

ON SURFACE - ~~BELOW~~ ON

LEFT - CL PAV'T. - ~~RIGHT~~ 1'

10' TO RT. EDGE PAVEMENT

S.L.M. 26+31

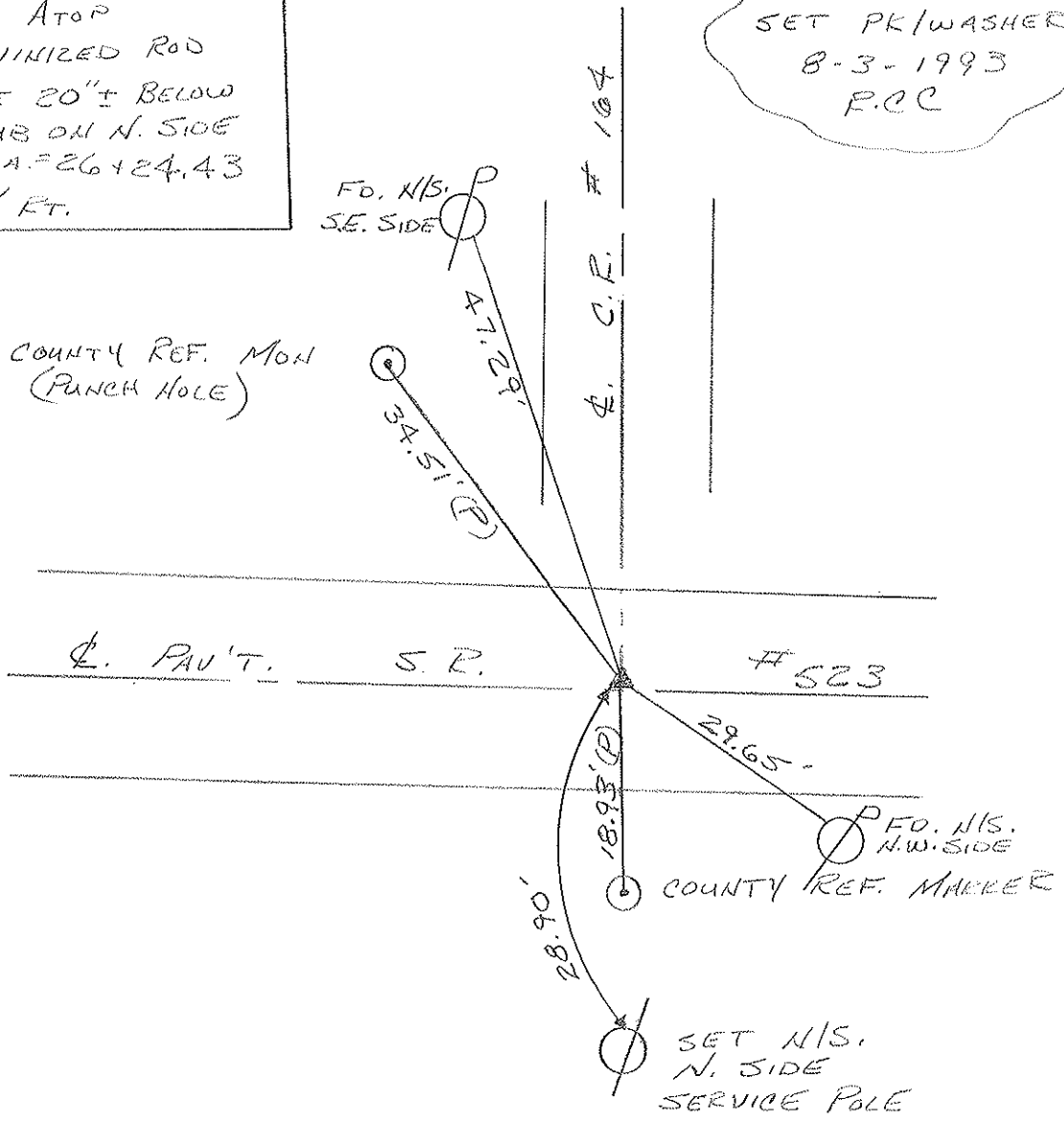
|    |    |
|----|----|
| 28 | 27 |
| 33 | 34 |



RECORD: 10-17-1986

PK/WASHER ATOP  
 PK/WASHER ATOP  
 1" x 3" GALVANIZED ROD  
 ATOP STONE 20" ± BELOW  
 SURFACE - HUB ON N. SIDE  
 SLM. P.I. STA. = 26+24.43  
 $\Delta = 00^\circ 35' \text{ RT.}$

SET PK/WASHER  
 8-3-1993  
 P.C.C.



# O.D.O.T. DISTRICT 2 SURVEY OFFICE

PERSONNEL

REFERENCE NO. 2

SHEET 2 OF 9

NOTES Crowin

DRAWN 11/17/86

ROUTE # 523

H.C. Ripple

DATE 10/17/86

COUNTY Sandusky

R.C. Geyman

WEATHER sunny-windy

TOWNSHIP Rice

Barbour

TEMP. 50°

SECTION 27, 28, 33 & 34

T N R 15 E

TYPE MONUMENT P.K. Washer

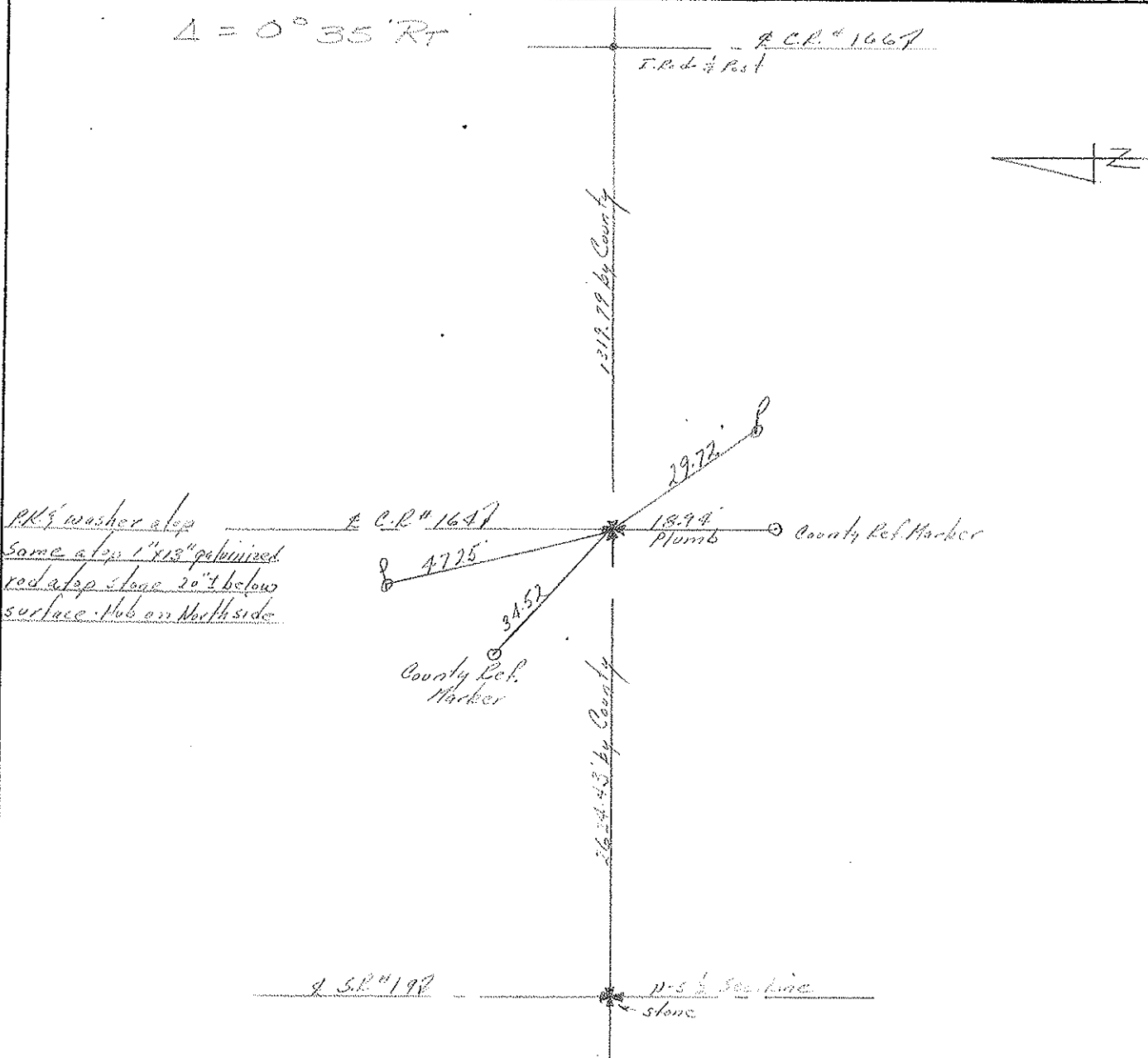
ON SURFACE - BELOW on surface

LEFT - to PAV'T. - RIGHT 1' W. of Pav't.

TO to EDGE PAVEMENT

S.L.M. 26 + 2.443

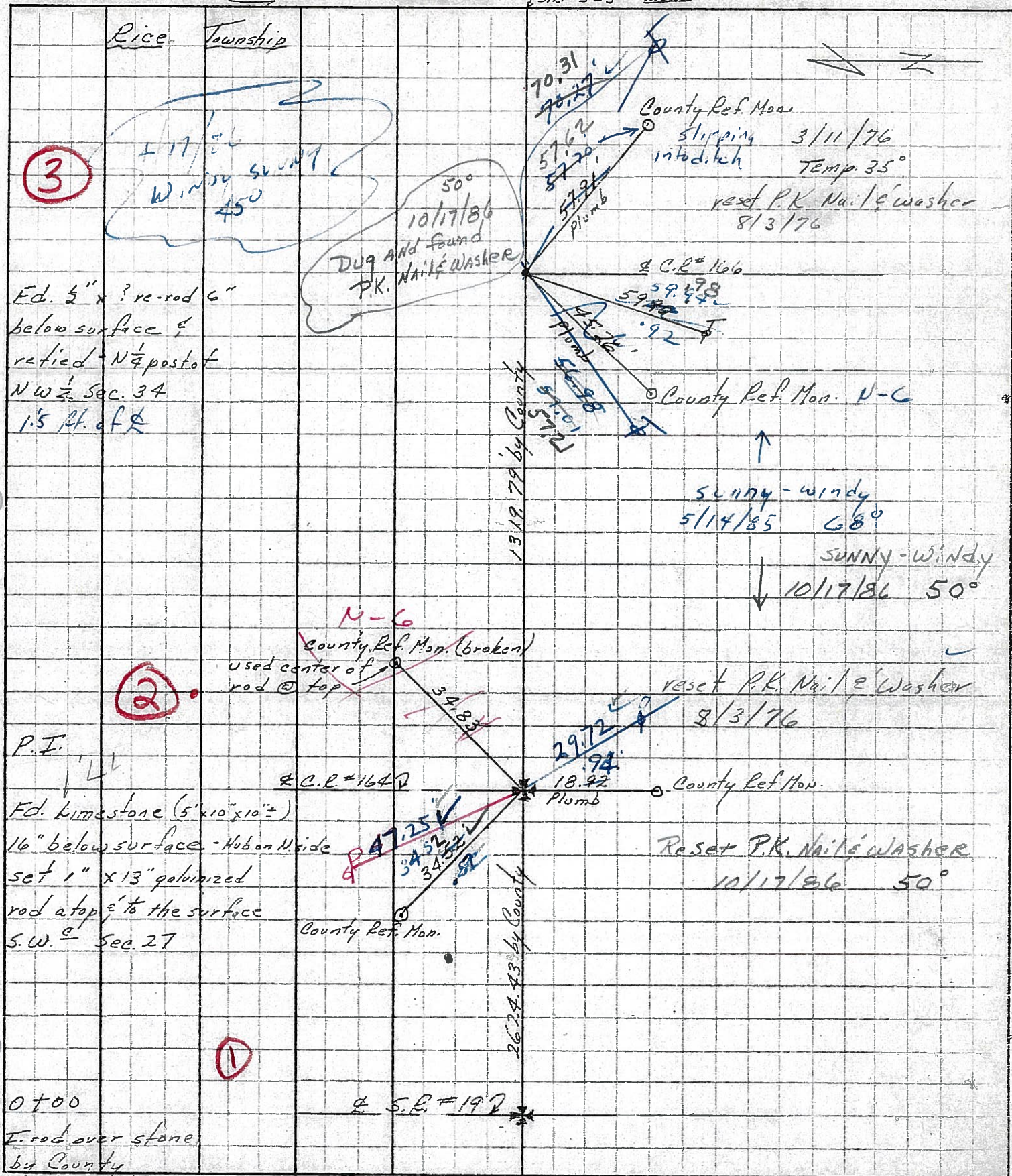
|    |    |
|----|----|
| 28 | 27 |
| 33 | 34 |



| PERSONNEL | TITLE | PERSONNEL | TITLE |
|-----------|-------|-----------|-------|
| Cronin    |       | Schneider |       |
| Eipke     |       | Masser    |       |
| Grayman   |       | Bortour   |       |

COUNTY Sandusky  
 DATE 2/24/76  
 S. R. # 523 WEATHER cloudy  
 SEC. S.R. #19 to S.R. #53 TEMP. 47°

DESCRIPTION Ties for Control Points LEFT CENTER LINE RIGHT JOB NO.



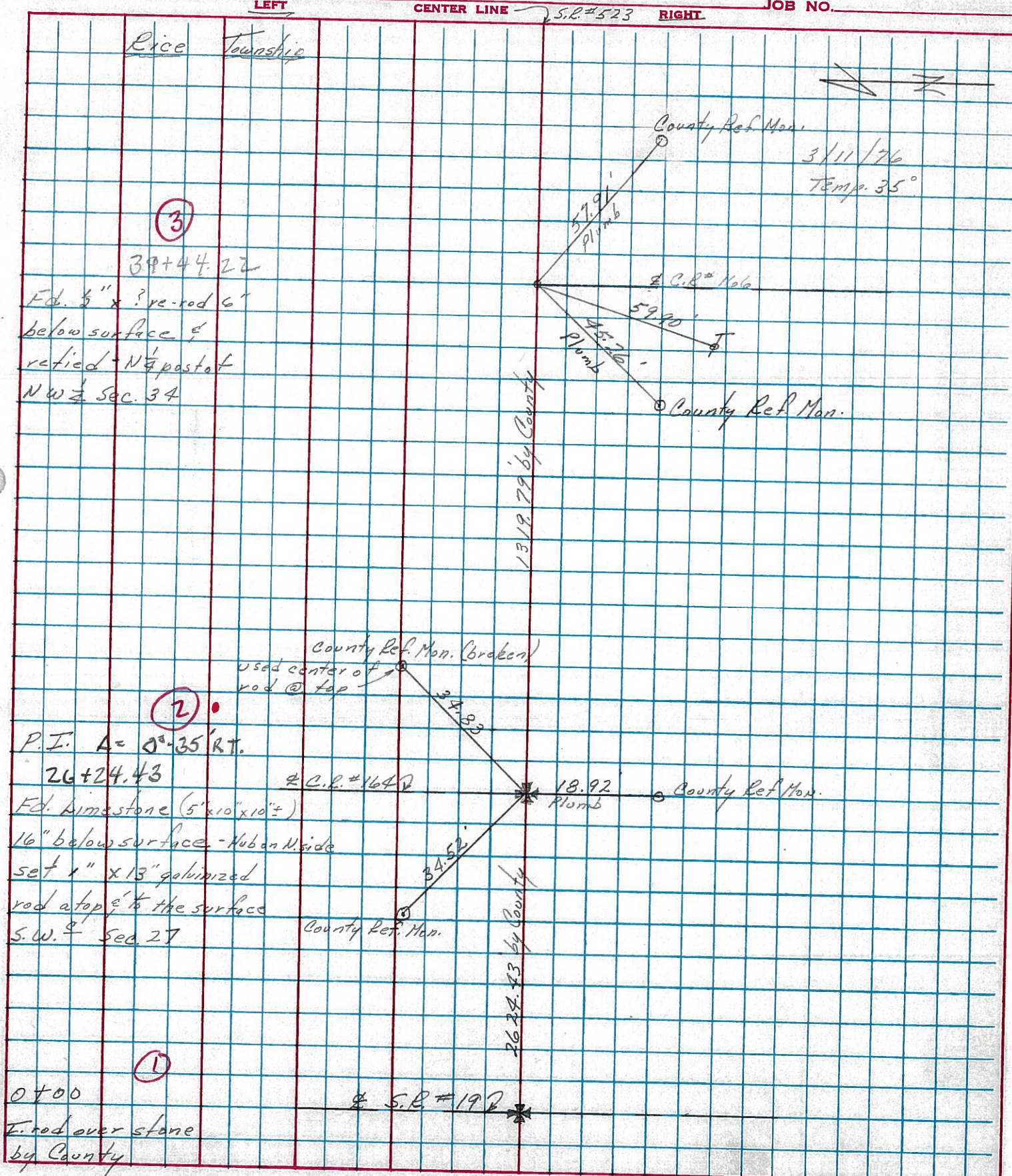
SHEET NO. 1  
 Drawn 3/3/76  
 DATE 2/24/76

| PERSONNEL | TITLE | PERSONNEL | TITLE |
|-----------|-------|-----------|-------|
| Cronin    |       | Schneider |       |
| Lippie    |       | Mosser    |       |
| Geyman    |       | Barbour   |       |

COUNTY Sandusky  
 S. R. # 523  
 WEATHER cloudy  
 SEC. S.R. # 19 to S.R. # 53  
 TEMP. 47°

DESCRIPTION Ties for Control Points

JOB NO.



PERSONNEL TITLE PERSONNEL TITLE

Schneider

Potts

COUNTY Sandusky

DATE

4-25-68

~~Barbour~~

S. R.

523

WEATHER

Cloudy

Barbour

SEC.

S.R.#19 to S.R.#53

TEMP.

30°

DESCRIPTION

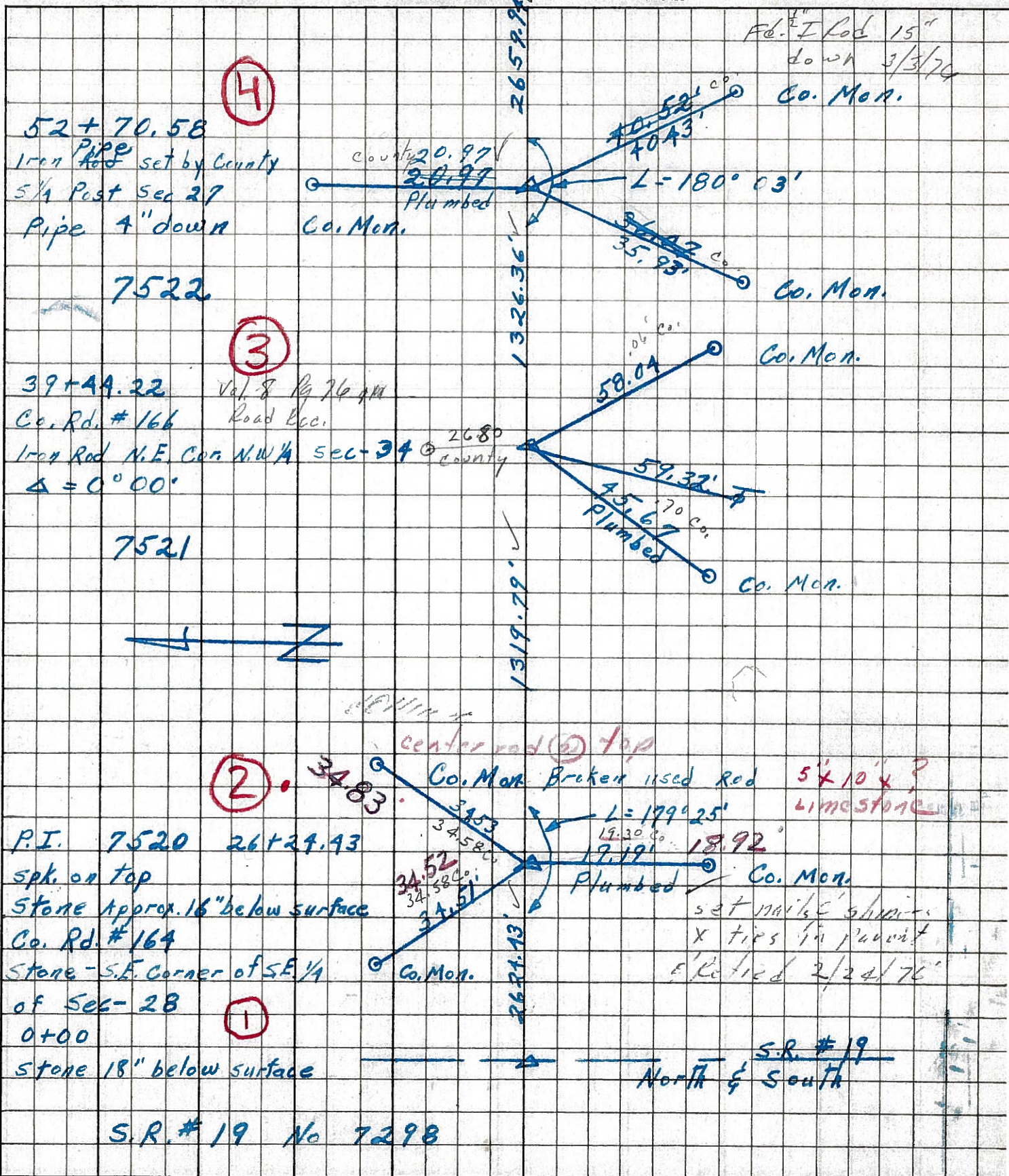
Ties for Control Points

JOB NO.

LEFT

CENTER LINE

RIGHT



Fe. I Rod 15" down 3/3/74 Co. Mon.

52+70.58  
Iron Pipe set by County  
5/4 Post Sec 27  
Pipe 4" down

7522

39+44.22 Vol. 8 Pg 76  
Co. Rd. #166 Road Rec.  
Iron Rod N.E. Cor. N.W. 1/4 Sec-34  
 $\Delta = 0^\circ 00'$

7521

P.I. 7520 26+24.93  
sph. on top  
Stone approx. 16" below surface  
Co. Rd. #164

Stone - S.E. Corner of S.E. 1/4 of Sec-28  
0+00  
Stone 18" below surface

set nails & shims x ties in point & Retied 2/24/76

S.R.#19 No 7298

PERSONNEL TITLE PERSONNEL TITLE

Schneider

Potts

COUNTY

Sandusky

DATE

4-24-68

~~Hesser~~

S. R.

523

WEATHER

Cloudy

Barbour

SEC.

S.R.#19 to S.R.#53

TEMP.

30°

~~Reading~~

DESCRIPTION

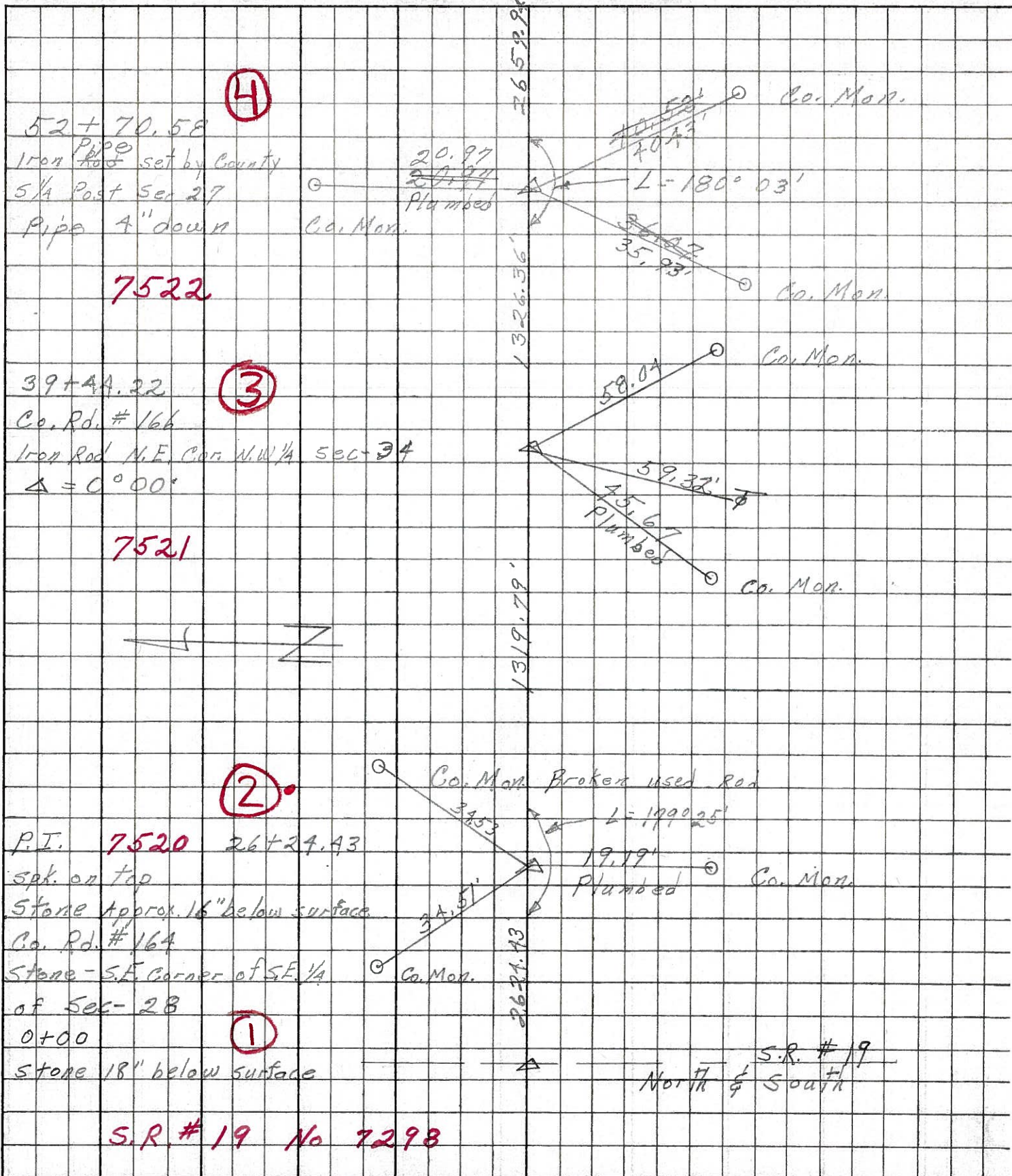
Ties for Control Points

JOB NO.

LEFT

CENTER LINE

RIGHT



S.R. #19 No 7298



PERSONNEL TITLE PERSONNEL TITLE

Sworden

COUNTY SANDUSKY

DATE Nov. 19, 1963

Bowers

S. R. #523

WEATHER Clear

Jamison

SEC. \_\_\_\_\_

TEMP +50°

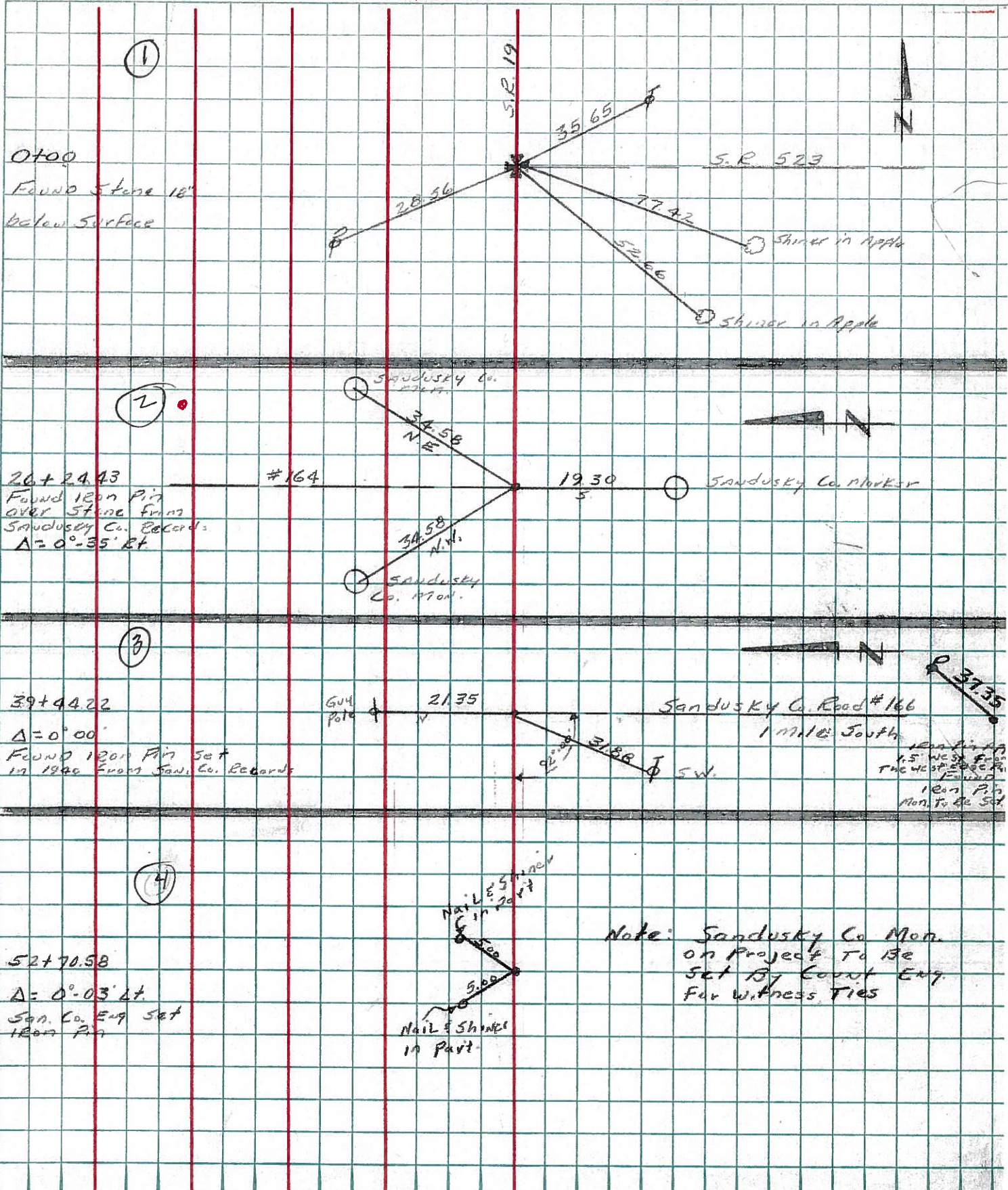
DESCRIPTION Control Points

JOB NO. \_\_\_\_\_

LEFT

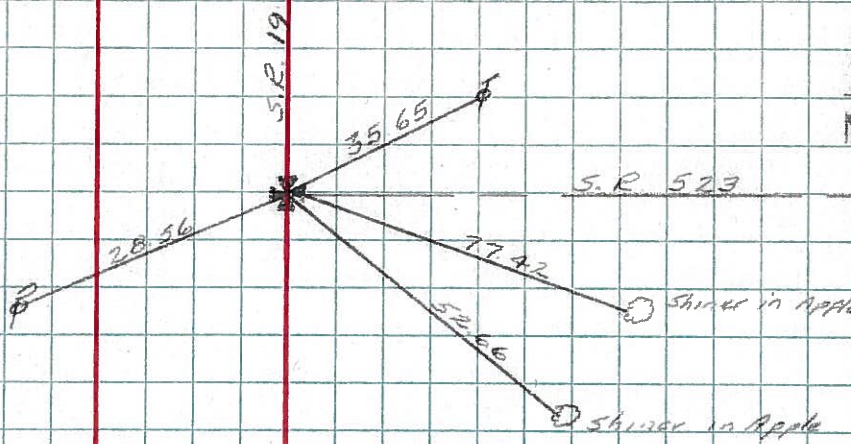
CENTER LINE

RIGHT



①

0+00  
Found Stone 18"  
below surface



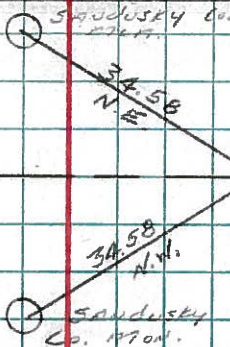
②

20+24.43  
Found 120" Pin  
OVER Stone from  
Sandusky Co. Records  
A=0°-35' R.T.

#164

19.30

Sandusky Co. Marker



③

39+44.22  
A=0°00'  
FOUND 120" Pin set  
in 1946 from Sand. Co. Records

Guy  
pole

21.35

Sandusky Co. Road #166  
1 mile South

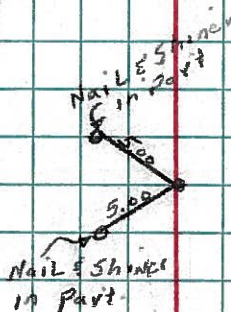
37.35

FOUND 120" Pin  
Mon. to be set



④

52+70.58  
A=0°-03' L.T.  
Sand. Co. Eng set  
120" Pin



Note: Sandusky Co. Mon.  
on Project to be  
set by County Eng.  
for witness ties