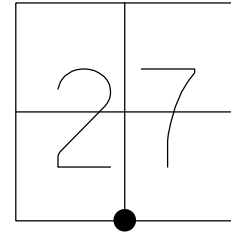


O.D.O.T. DISTRICT 2 SURVEY OFFICE (USE ONLY)

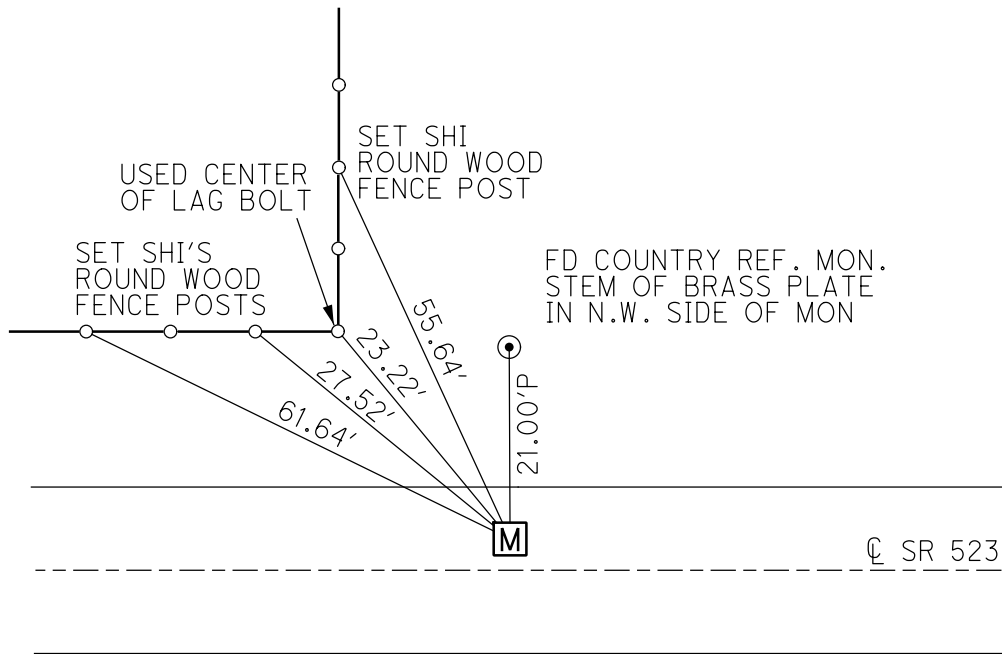
PERSONNEL \_\_\_\_\_ REFERENCE NO. 4 SHEET 4 OF 11  
 NOTES MILLER DATE 12/13/18 ROUTE SR 523  
 H.C. LEU WEATHER SUNNY COUNTY SANDUSKY  
 R.C. MILLER TEMP. 35° TOWNSHIP RICE  
 DWG BY MILLER PID 84079 SECTION 27  
 T 6 N R 15 E

TYPE MONUMENT MONBOX W/ 1" IPIN W/ DIMPLE  
 ON SURFACE - ~~BELOW~~ ON  
 OFFSET ☐ PAVEMENT 4.5' LT : ~~RT~~  
6' TO LT EDGE PAVEMENT  
 STATION: 52+70.2

HORZ. DATUM: NAD83 (2011) GEOID: 2012A  
 GRID: NORTHING: 647712.943 EASTING: 1799586.980



RECORD: P.I.  
 STA 52+70.58  
 $\Delta=00^{\circ}03'$  LT  
 FD PK/WASHER  
 ATOP PK/WASHER  
 ATOP 1"x15"  
 GALV. ROD  
 ATOP IROD  
 $\pm 18"$  DOWN  
 10-17-86  
 FD PK/WASHER  
 7-15-93, RCC  
 SET PK/WASHER  
 8-3-93, RCC  
 FD MAG NAIL  
 7-18-17, DCH  
 FD MON BOX  
 W/ 1" IPIN  
 W/ DIMPLE  
 NEWREF04  
 12-13-18, JLL



NOTE:  
 ALL SECTION CORNERS WERE DUG IN A  
 JOINT EFFORT WITH SANDUSKY COUNTY  
 ENGINEER'S OFFICE AND THE CONTRACTOR  
 IN JULY 2018. SAN-523-0.00 PID #84079

FD 1"x15" GALV. ROD 7.5" BELOW  
 CKREF04  
 FD 3/4"x4' SQUARE IROD 20" BELOW  
 OREF04 7-24-18, JLL

O.D.O.T. DISTRICT 2 SURVEY OFFICE (USE ONLY)

PERSONNEL

REFERENCE NO. 4

SHEET 4 OF 10

NOTES HOMAN

DATE 7-18-17

ROUTE SR 523

H.C. HOMAN

WEATHER SUNNY

COUNTY SANDUSKY

R.C. CARSON

TEMP. 75°

TOWNSHIP RICE

SECTION 27

DWG BY HAGEMEYER

PID 84079

T 6 N R 15 E

TYPE MONUMENT MAG NAIL

ON SURFACE - ~~BELOW~~ ON

OFFSET CL PAVEMENT 2.5' LT : ~~RT~~

7' TO LT EDGE PAVEMENT

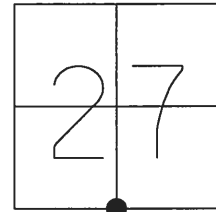
STATION: 52+84

HORZ. DATUM: -

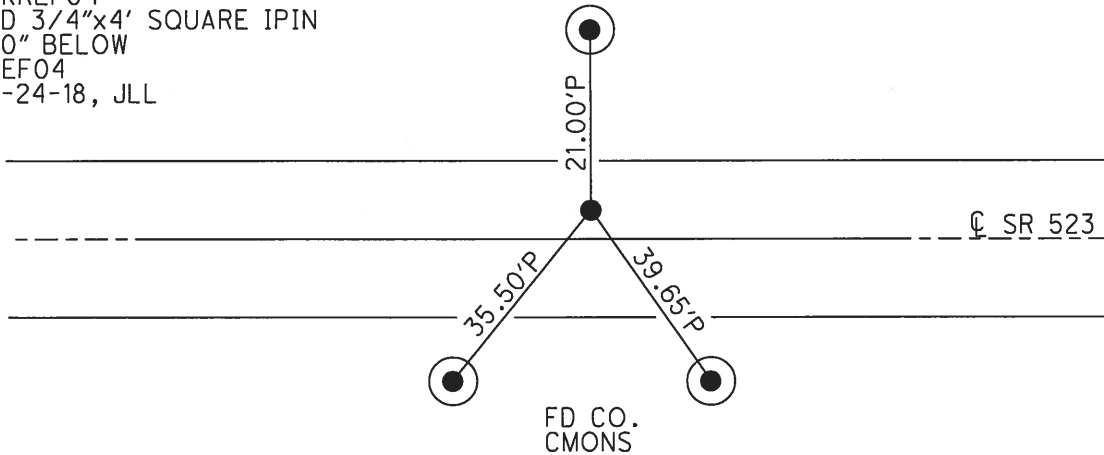
GEOID: -

GRID: NORTHING: 647712.979

EASTING: 1799586.872



RECORD: P.I.  
 STA 52+70.58  
 $\Delta = 00^{\circ}03' \text{ LT}$   
 FD P.K./WASHER  
 ATOP 1"x15"  
 GALV. ROD  
 ATOP IPIN  
 18"± DOWN  
 10-17-86  
 SET P.K./WASHER  
 8-3-93, RCC  
 FD MAG NAIL  
 7/18/17, DCH  
 FD 1"x15" GALV. ROD  
 7 1/2" BELOW  
 CKREF04  
 FD 3/4"x4' SQUARE IPIN  
 20" BELOW  
 REF04  
 7-24-18, JLL



O.D.O.T. DISTRICT 2 SURVEY OFFICE

PERSONNEL \_\_\_\_\_

REFERENCE NO. 4

SHEET 4 OF 9

NOTES CHENEY

H.C. RIPPLE

R.C. GEYMAN

DATE 7-15-1993

WEATHER FAIR

TEMP. 75°

ROUTE #523

COUNTY SANDUSKY

TOWNSHIP RICE

SECTION 27 & 34

T. 6 N R. 15 E

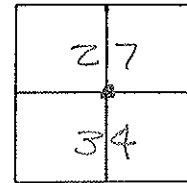
TYPE MONUMENT PK/WASHER

ON SURFACE - ~~BELOW~~ ON

LEFT - C. PAV'T. - RIGHT 2.5'

7' TO LT. EDGE PAVEMENT

S.L.M. 52+84



RECORD: 10-17-1986

SLM. P.I. STA. 52+70.58

Δ = 00° 03' LT.

PK/WASHER ATOP

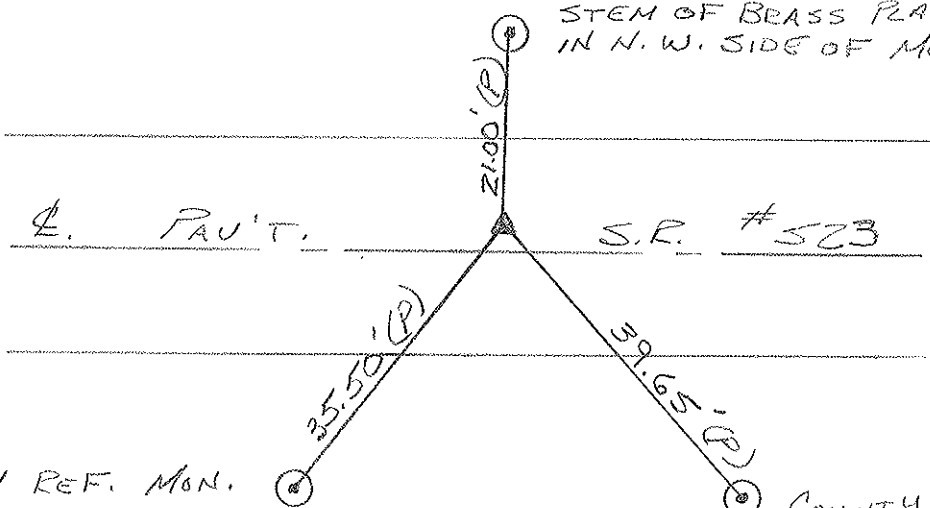
PK/WASHER ATOP

1" x 15" GALV. ROD ATOP

I. ROD 18" ± DOWN

SET PK/WASHER  
8-3-1993  
RER

COUNTY REF. MON.  
STEM OF BRASS PLATE  
IN N.W. SIDE OF MON.



COUNTY REF. MON.  
USED CTR. OF ROD.

COUNTY REF. MON.  
(PUNCH HOLE)

# O.D.O.T. DISTRICT 2 SURVEY OFFICE

PERSONNEL

REFERENCE NO. 4

SHEET 4 OF 9

NOTES Cremm

DRAWN 11/17/86

ROUTE #523

H.C. Ripple

DATE 10/17/86

COUNTY Sandusky

R.C. Ceyman

WEATHER sunny-windy

TOWNSHIP Rice

Barbour

TEMP. 50

SECTION 27 E 34

T. 6 N. R. 15 E

TYPE MONUMENT P.K. & washer

ON SURFACE - BELOW on surface

LEFT - € PAV'T. - RIGHT 2' Lt. & Pav't.

\_\_\_ TO \_\_\_ EDGE PAVEMENT

S.L.M. 52+70.58

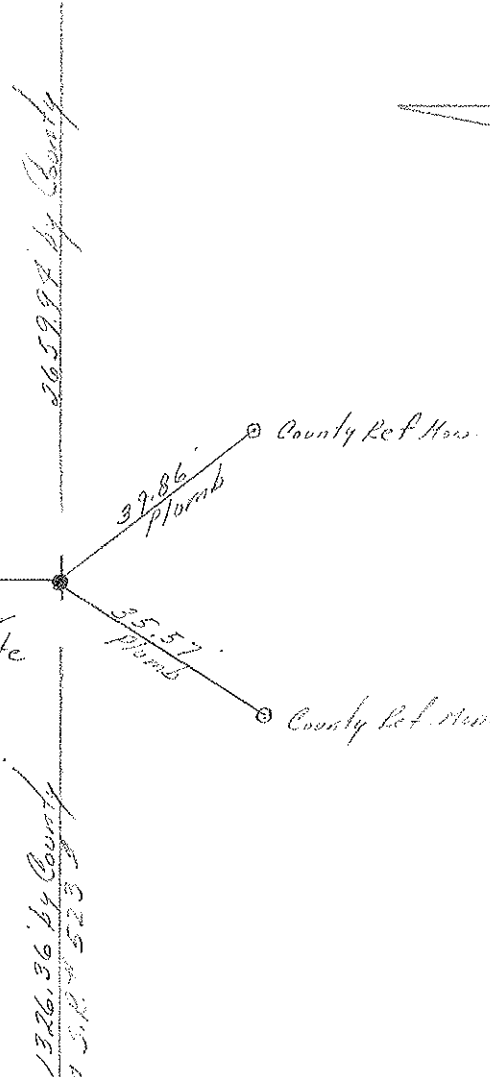
2	7
3	4



$\Delta = 0^{\circ} 03' LT$

P.K. & washer atop same  
atop 1" x 15' galv. rod  
atop 1500' rod 18" below  
surface. County Rec.

20.95"  
Plumb  
County Ref. Marker  
stem of brass plate



PERSONNEL	TITLE	PERSONNEL	TITLE
Cronin		Schneider	
Ripple		Mosser	
Geyman		Barbour	

COUNTY Sandusky

S. R. # 523

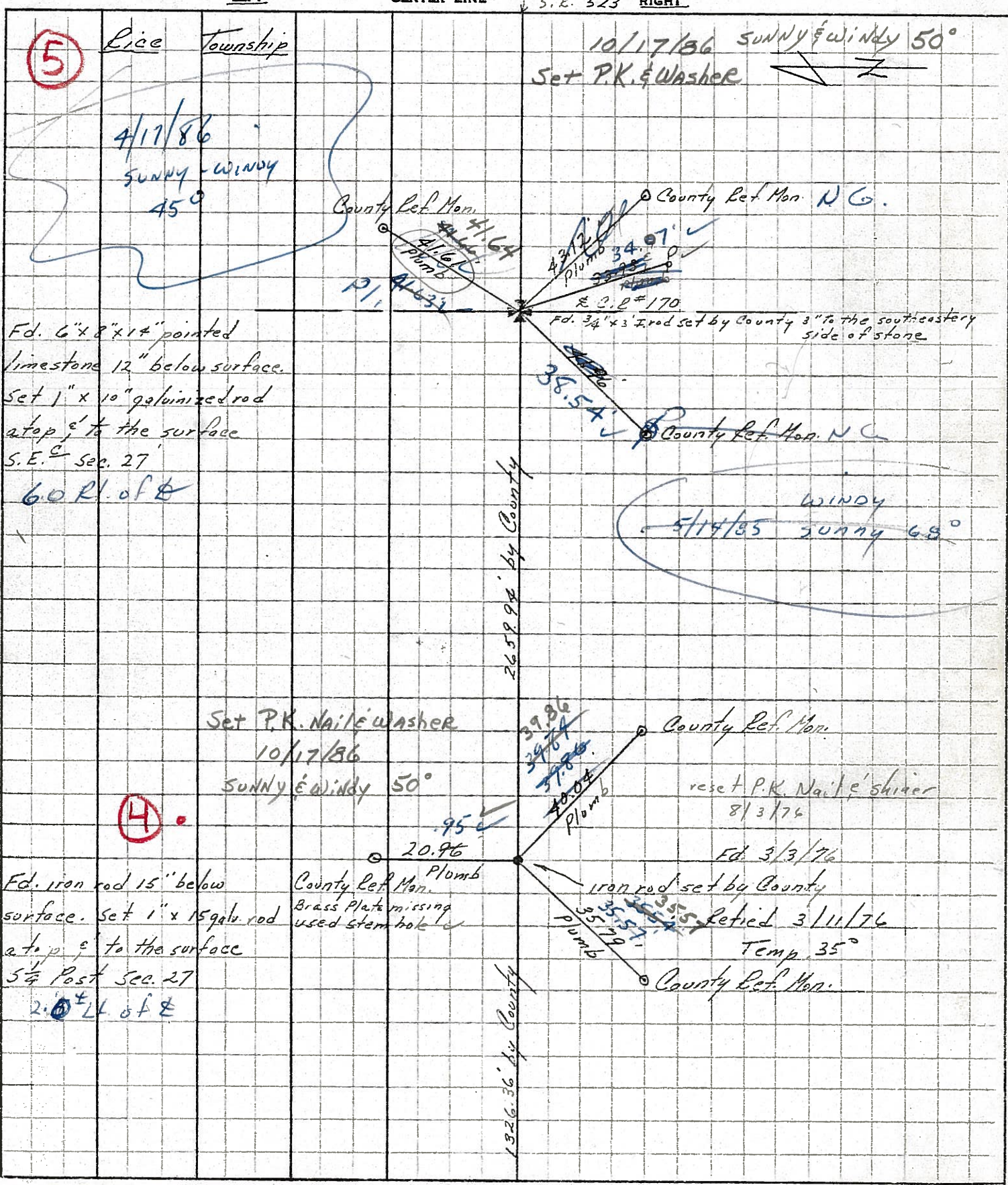
WEATHER cloudy

SEC. S.E. #19 to S.E. #53

TEMP. 47°

DESCRIPTION Ties for Control Points

JOB NO.



5

Rice Township

10/17/86 sunny & windy 50°  
Set P.K. & Washer

4/17/86  
sunny - windy  
45°

County Ref. Mon. 41.64'  
Plumb  
P11

County Ref. Mon. N.C.  
43.12'  
Plumb 34.97'  
S.E. #170  
Fd. 3/4" x 3" rod set by County 3" to the southeastern side of stone

Fd. 6" x 8" x 14" pointed limestone 12" below surface.  
Set 1" x 10" galvanized rod at top of the surface  
S.E. Sec. 27  
60 Rl. of E

38.54'

County Ref. Mon. N.C.

5/14/85 windy sunny 68°

2659.94' by County

Set P.K. Nail & Washer  
10/17/86  
sunny & windy 50°

4

39.86'  
39.74'  
37.86'  
40.04'  
Plumb

County Ref. Mon.

reset P.K. Nail & shiner  
8/3/76

Fd. iron rod 15" below surface. Set 1" x 15 galv. rod at top of the surface  
5 1/2 Post Sec. 27  
2.0 L of E

County Ref. Mon. Plumb  
20.96'  
Brass Plate missing used stem hole

1326.36' by County

iron rod set by County  
35.19'  
35.57'  
35.57'  
35.57'  
Set 3/11/76  
Temp 35°  
County Ref. Mon.

PERSONNEL	TITLE	PERSONNEL	TITLE
Cronin		Schneider	
Ripple		Mosser	
Geyman		Barbour	

COUNTY Sandusky

S. R. # 523

WEATHER cloudy

SEC. S.R. #19 to S.R. #53

TEMP. 47°

DESCRIPTION Ties for Control Points

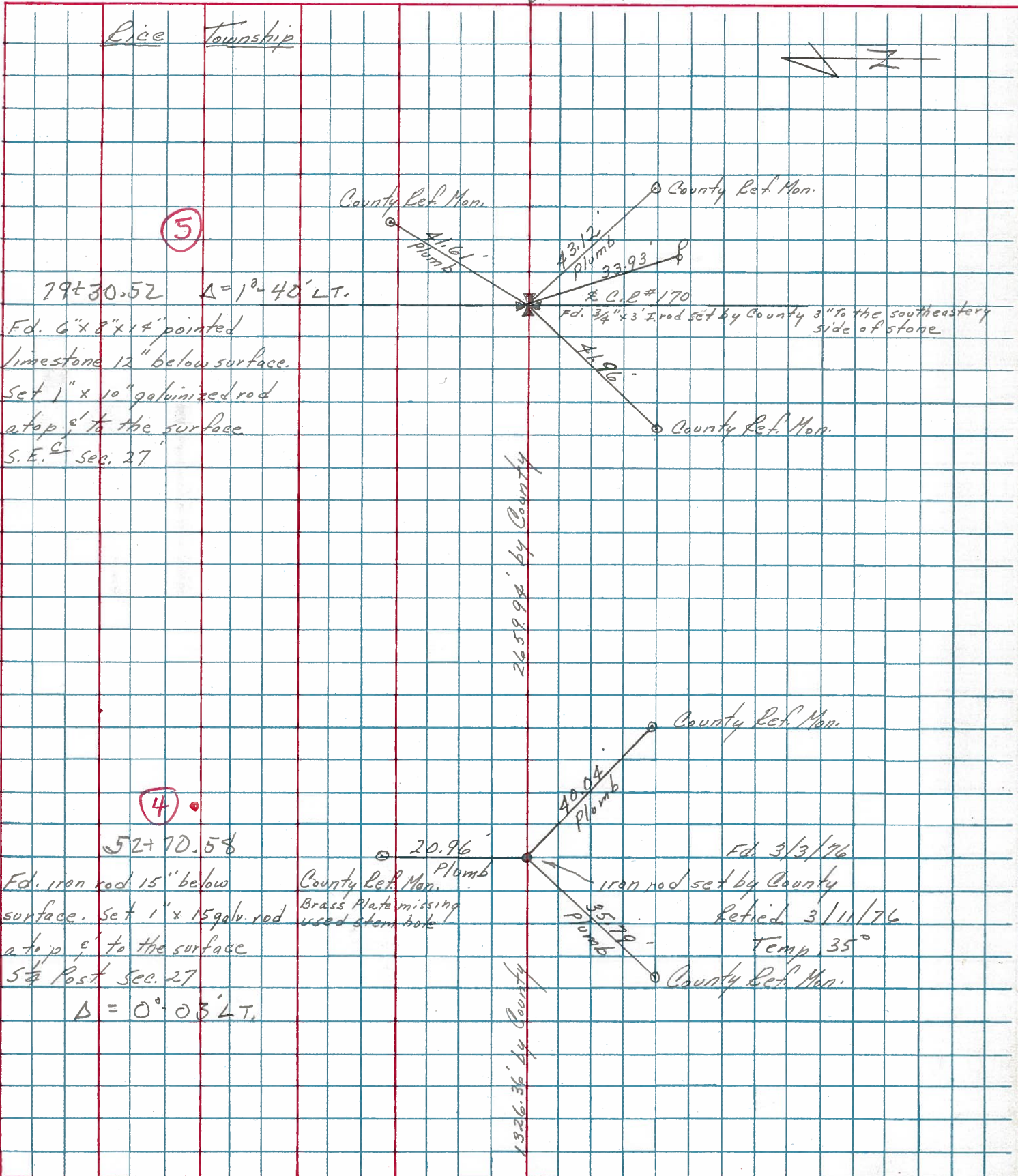
JOB NO.

LEFT

CENTER LINE

S.R. #523

RIGHT



PERSONNEL TITLE PERSONNEL TITLE

Schneider

Potts

COUNTY Sandusky

DATE 4-25-68

Barbour

S. R. 523

WEATHER Cloudy

Redding

SEC. S.R.#19 to S.R.#53

TEMP. 30°

DESCRIPTION

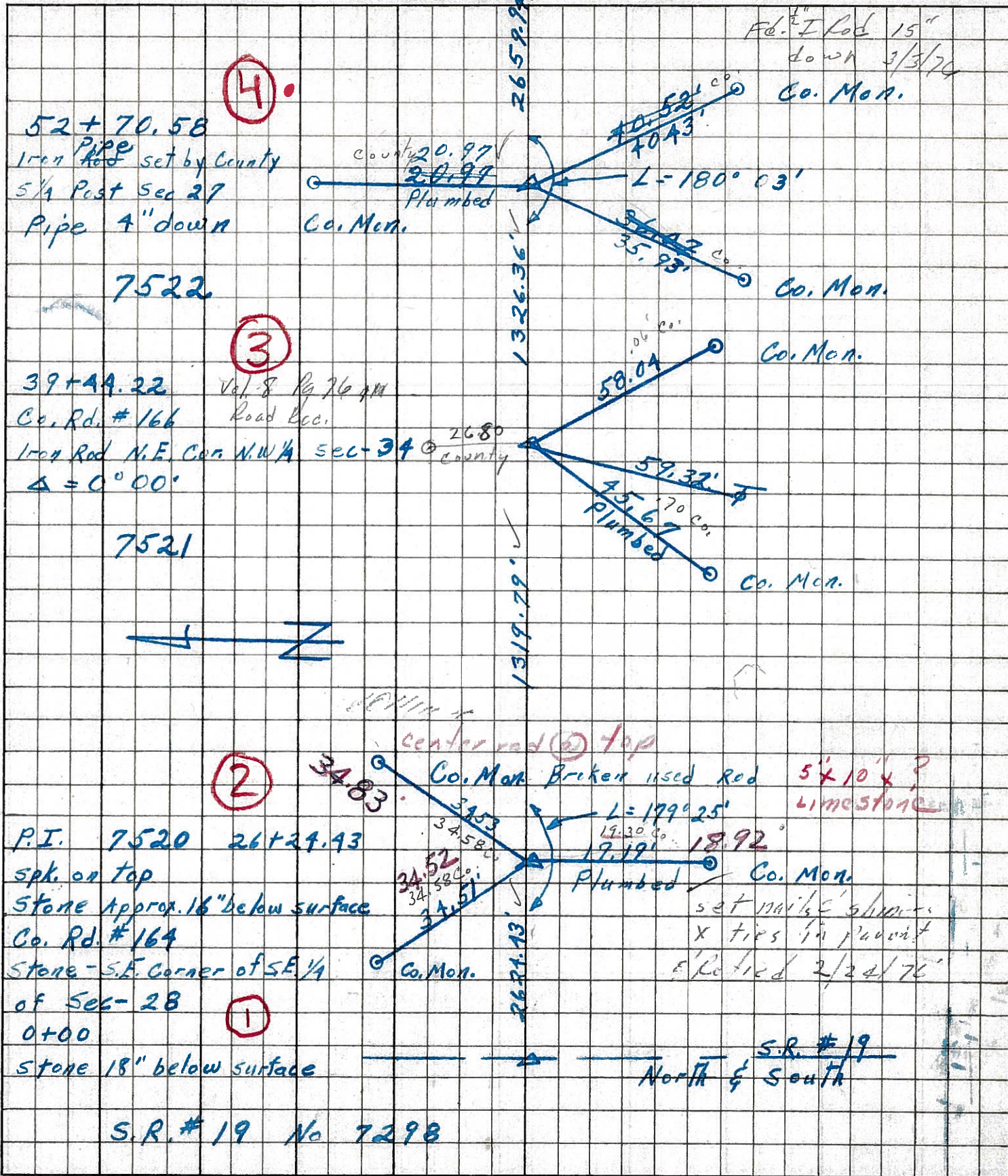
Ties for Control Points

JOB NO.

LEFT

CENTER LINE

RIGHT



Fd. 1/2" I Rod 15" down 3/3/70 Co. Mon.

4

52+70.58  
Iron Pipe set by County  
5/4 Post Sec 27  
Pipe 4" down  
Co. Mon.

Co. Mon. 20.97  
20.97  
Plumbed

40.52'  
40.43'  
L-180° 03'  
35.93'  
35.93'

Co. Mon.

3

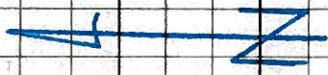
39+44.22 Vol. 8 Pg 76 pm  
Co. Rd. #166 Road Ecc.  
Iron Rod N.E. Cor. N.W. 1/4 Sec-34  
 $\Delta = 0^\circ 00'$

26.80  
Co. Mon.

58.04  
59.32'  
45.67'  
Plumbed

Co. Mon.

Co. Mon.



2

P.I. 7520 26+29.93  
spk. on top  
Stone approx. 16" below surface  
Co. Rd. #164  
Stone - S.E. Corner of S.E. 1/4  
of Sec-28  
Co. Mon.

center road @ top  
Co. Mon. Broken used Rod 5'x10' x ? Limestone  
L=199° 25'  
19.30'  
18.92'  
19.19'

34.83  
34.53  
34.58'  
34.58'  
34.51'

Plumbed  
Co. Mon.

set nails & slits x ties in pavement & tied 2/24/76

1

0+00  
stone 18" below surface

S.R. #19  
North & South

S.R. #19 No 7298

PERSONNEL TITLE PERSONNEL TITLE

Schneider

Potts

COUNTY Sandusky

DATE 4-24-68

~~Hesser~~

S. R. 523

WEATHER Cloudy

Barbour

SEC. S.R.# 19 to S.R.# 53

TEMP. 30°

~~Redding~~

DESCRIPTION

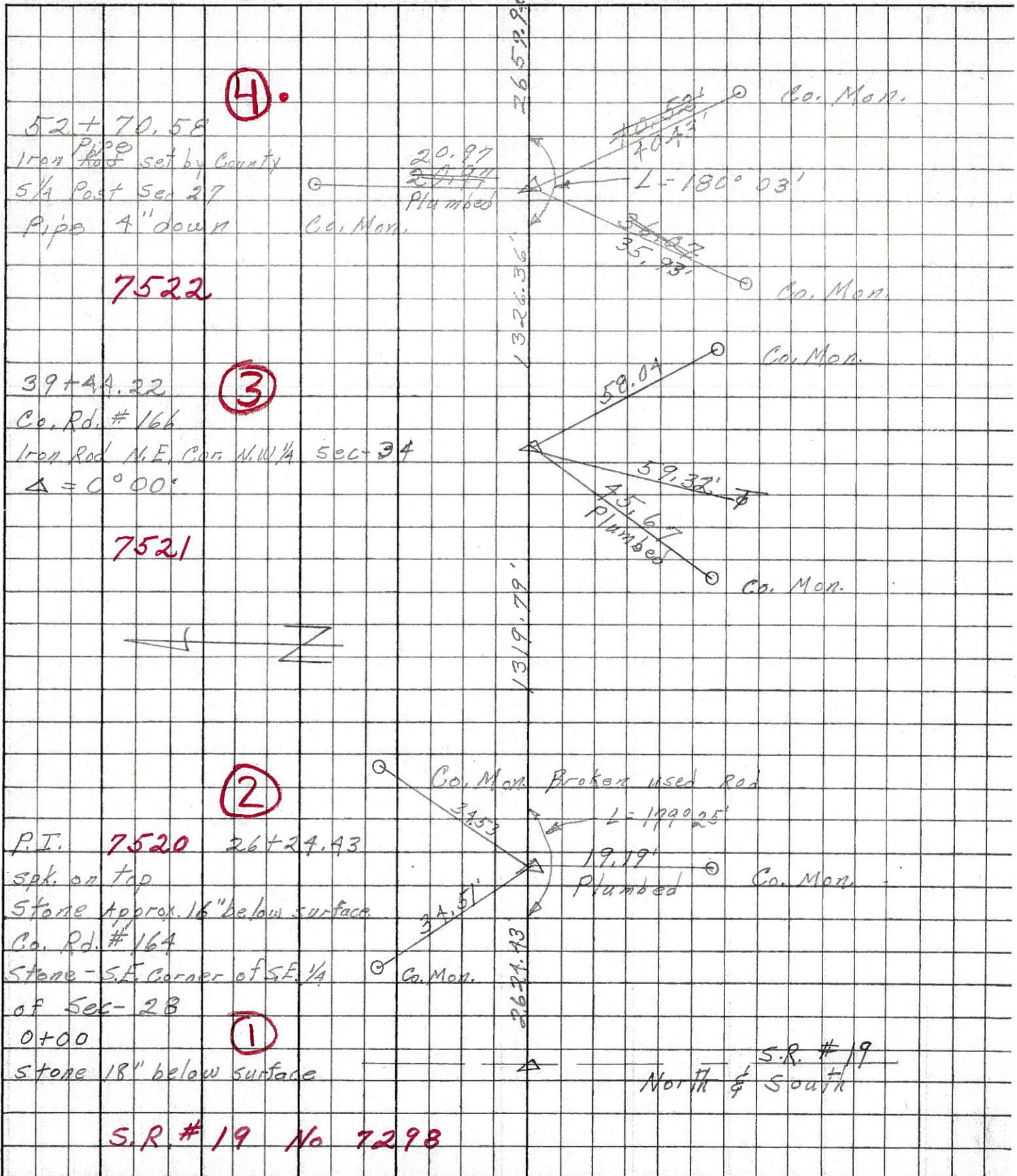
Ties for Control Points

JOB NO.

LEFT

CENTER LINE

RIGHT





PERSONNEL TITLE PERSONNEL TITLE  
Sworden \_\_\_\_\_  
Bowers \_\_\_\_\_  
Jamison \_\_\_\_\_

COUNTY SANDUSKY DATE Nov. 19, 1963  
 S. R. # 523 WEATHER Clear  
 SEC. \_\_\_\_\_ TEMP + 50°

DESCRIPTION Control Points JOB NO. \_\_\_\_\_

