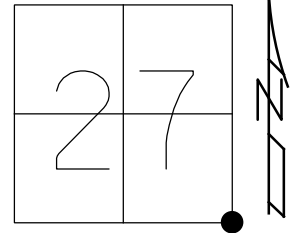


O.D.O.T. DISTRICT 2 SURVEY OFFICE (USE ONLY)

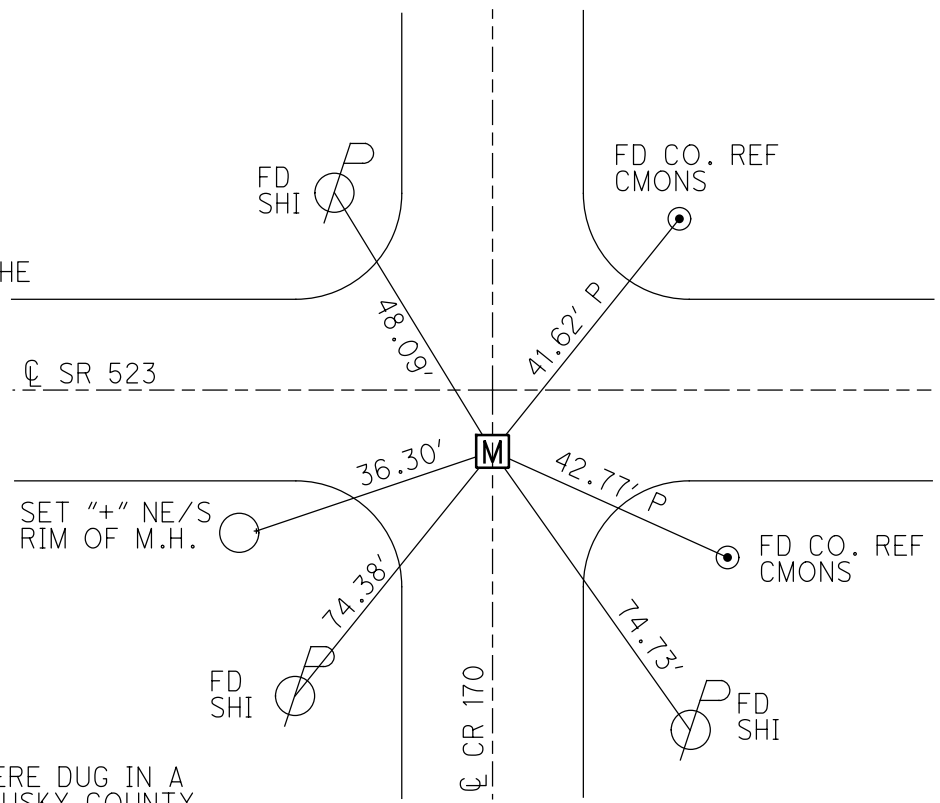
PERSONNEL _____ REFERENCE NO. 5 SHEET 5 OF 11
 NOTES MILLER DATE 12/13/18 ROUTE SR 523
 H.C. LEU WEATHER SUNNY COUNTY SANDUSKY
 R.C. MILLER TEMP. 39° TOWNSHIP RICE
 SECTION 27
 DWG BY MILLER PID 84079 T 6 N R 15 E

TYPE MONUMENT MONBOX W/ 1" IPIN W/ DIMPLE
~~ON SURFACE~~ - BELOW 6"
 OFFSET Q PAVEMENT 3.2' ~~±~~ : RT
7.3' TO RT EDGE PAVEMENT
 STATION: 79+31.3



HORZ. DATUM: NAD83 (2011) GEOID: 2012A
 GRID: NORTHING: 647621.793 EASTING: 1802246.336

RECORD: P.I.
 STA 79+30.52
 Δ=01°40' LT
 FD PK/WASHER
 ATOP PK/WASHER
 ATOP 1"x10" GALV. ROD
 ATOP STONE
 ±18" DOWN
 10-17-86
 SET 3/4"x 3' IROD
 SET BY COUNTY 3" TO THE
 S.E. SIDE OF STONE
 NO RECORDED DATE
 FD PK/WASHER
 7-15-93
 SET PK/WASHER
 8-3-93, RCC
 FD 1" IPIN
 6" DOWN
 7-18-17, DCH
 FD MON BOX
 W/ 1" IPIN
 W/ DIMPLE
 NEWREF05
 12-13-18, JLL



NOTE:
 ALL SECTION CORNERS WERE DUG IN A
 JOINT EFFORT WITH SANDUSKY COUNTY
 ENGINEER'S OFFICE AND THE CONTRACTOR
 IN JULY 2018. SAN-523-0.00 PID #84079

FD 1" GALV. ROD 7" BELOW
 CKREF05
 FD 3/4"x3' IPIN 13" BELOW 3" SE OF HIGH POINT OF STONE
 FD 6"x8" STONE 18" BELOW
 USED HIGHPOINT
 OREF05 7-24-18, JLL
 SET OFFSET PIN OVER HIGH POINT OF STONE

O.D.O.T. DISTRICT 2 SURVEY OFFICE (USE ONLY)

PERSONNEL _____ REFERENCE NO. 5 SHEET 5 OF 10
 NOTES HOMAN DATE 7-18-17 ROUTE SR 523
 H.C. HOMAN WEATHER SUNNY COUNTY SANDUSKY
 R.C. CARSON TEMP. 75° TOWNSHIP RICE
 SECTION 27
 DWG BY HAGEMEYER PID 84079 T 6 N R 15 E

TYPE MONUMENT 3/4" IPIN

~~ON SURFACE~~ - BELOW 6"

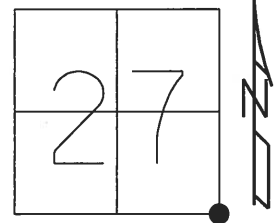
OFFSET ϕ PAVEMENT 5' ~~LT~~ : RT

3' TO RT EDGE PAVEMENT

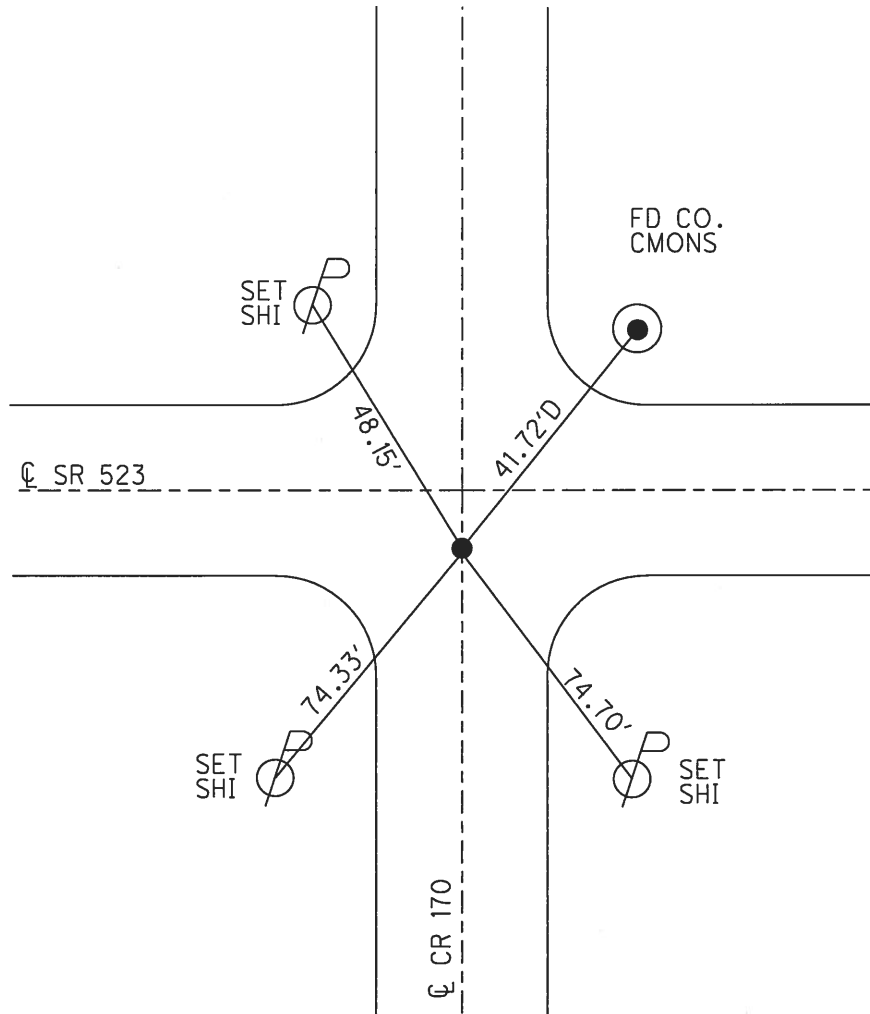
STATION: 79+53

HORZ. DATUM: - GEOID: -

GRID: NORTHING: 647621.7335 EASTING: 1802246.2065



RECORD: P.I.
 STA. 79+30.52
 $\Delta = 01^\circ 40'$ LT
 FD P.K./WASHER
 ATOP 1"x10" GALV. ROD
 ATOP STONE
 18"± DOWN
 10-17-86
 SET 3/4" IPIN
 BY COUNTY 3" TO THE
 S.E. SIDE OF STONE
 SET P.K./WASHER
 8-3-93, RCC
 FD 3/4" IPIN
 6" DOWN
 7/18/17, DCH
 FD 1" GALV. ROD
 7" BELOW
 CKREF05
 FD 6"x8" STONE
 18" BELOW
 REF05
 FD 3/4"x3' IPIN
 3" SE OF HIGH POINT
 OF STONE
 USED HIGHPOINT
 7-24-18, JLL



O.D.O.T. DISTRICT 2 SURVEY OFFICE

PERSONNEL

REFERENCE NO. 5

SHEET 5 OF 9

NOTES CHENEY

H.C. RIPPLE

R.C. GEYMAN

DATE 7-15-1993

WEATHER FAIR

TEMP. 75°

ROUTE #523

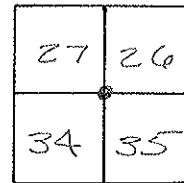
COUNTY SANDUSKY

TOWNSHIP PINE

SECTION 26, 27, 34 & 35

T. 6N R. 15E

TYPE MONUMENT PK/WASHER
 ON SURFACE - ~~BELOW~~ ON
~~LEFT~~ - LEFT PAV'T. - RIGHT 5'
3' TO RT. EDGE PAVEMENT
 S.L.M. 79+53



RECORD: 10-17-1986

S.L.M. P.I. STA. 79+30.52

$\Delta = 01^{\circ} 40' 00''$ LT.

PK/WASHER ATOP

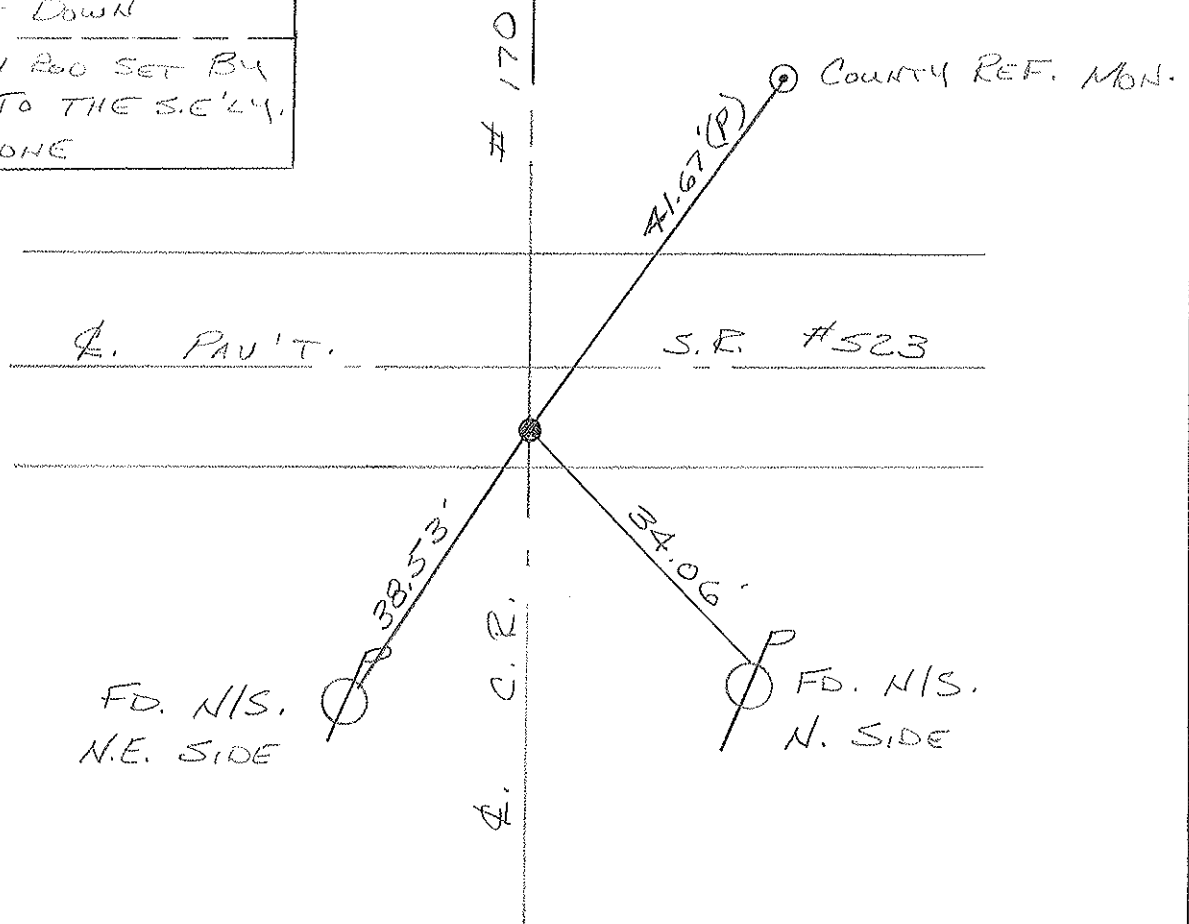
PK/WASHER ATOP

1" x 10" GALV. ROD ATOP

STONE 18" x DOWN

3/4" x 3" IRON ROD SET BY
 COUNTY 3" TO THE S.E'LY,
 SIDE OF STONE

SET PK/WASHER
 8-3-1993
 REC



O.D.O.T. DISTRICT 2 SURVEY OFFICE

PERSONNEL

NOTES Cranin
 H.C. Ripple
 R.C. Geyman
Barbour

REFERENCE NO. 5

Drawn 11/17/86
 DATE 10/17/86
 WEATHER sunny-windy
 TEMP. 50°

SHEET 5 OF 9

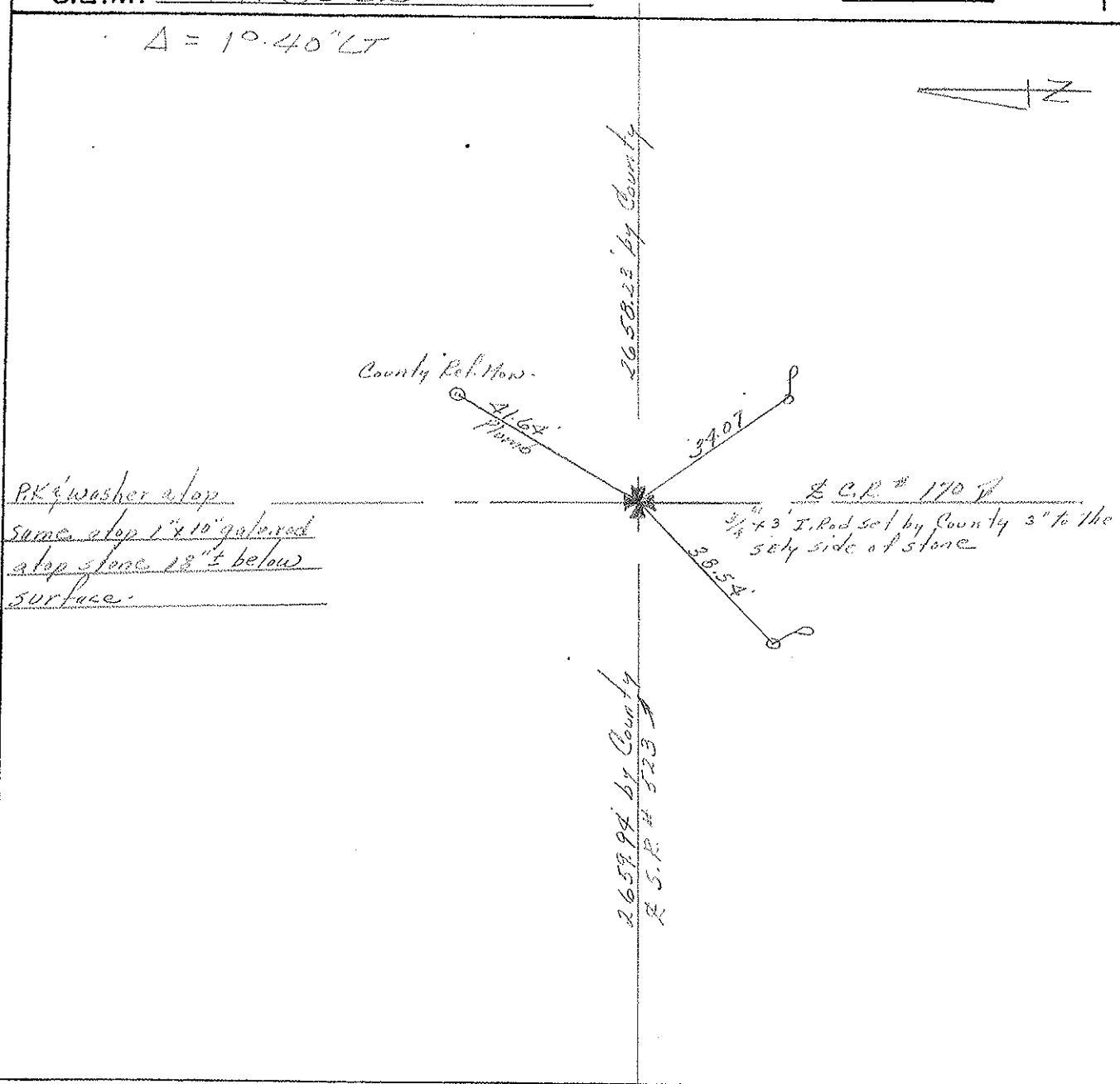
ROUTE # 523
 COUNTY Sandusky
 TOWNSHIP Rice
 SECTION 26, 27, 34 & 35
 T 6 N R 15 E

TYPE MONUMENT P.K. & washer
 ON SURFACE - BELOW on surface
 LEFT - & PAV'T. - RIGHT 6" R.L. & Pav't.
 TO EDGE PAVEMENT
 S.L.M. 79+30.52

27	26
34	35



$\Delta = 10.40" LT$



PERSONNEL

TITLE

PERSONNEL

TITLE

Cronin

Schneider

COUNTY Sandusky

Ripple

Mosser

S. R. # 523

WEATHER cloudy

Geyman

Barbour

SEC. S.R. #19 to S.R. #53

TEMP. 47°

DESCRIPTION Ties for Control Points

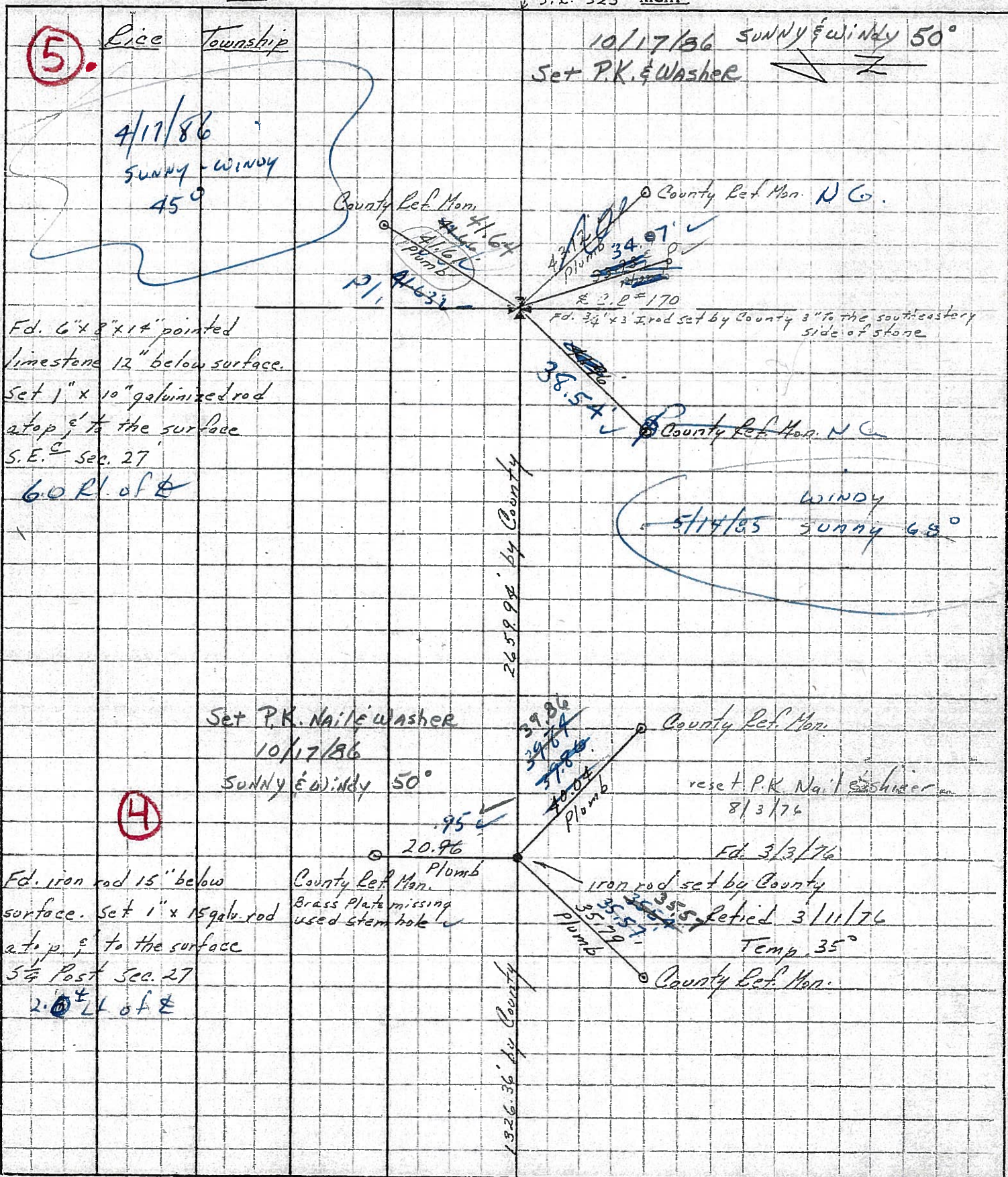
LEFT

CENTER LINE

S. E. # 523

RIGHT

JOB NO.



PERSONNEL TITLE PERSONNEL TITLE

Cronin Schneider
 Ripple Mosser
 Geyman Barbour

COUNTY Sandusky

S. R. # 523

WEATHER cloudy

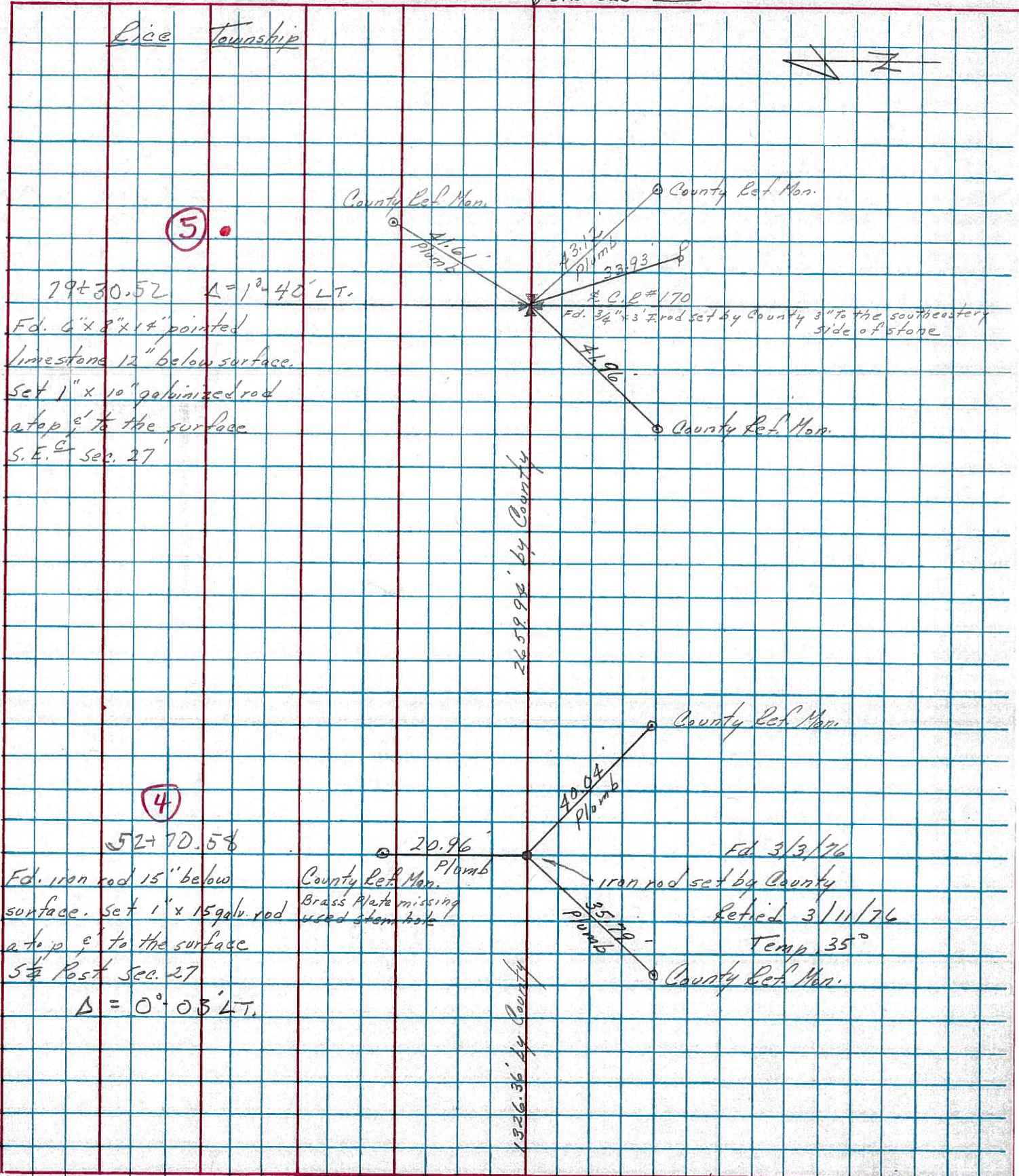
SEC. S.R. #19 to S.R. #53

TEMP. 47°

DESCRIPTION Ties for Control Points

JOB NO.

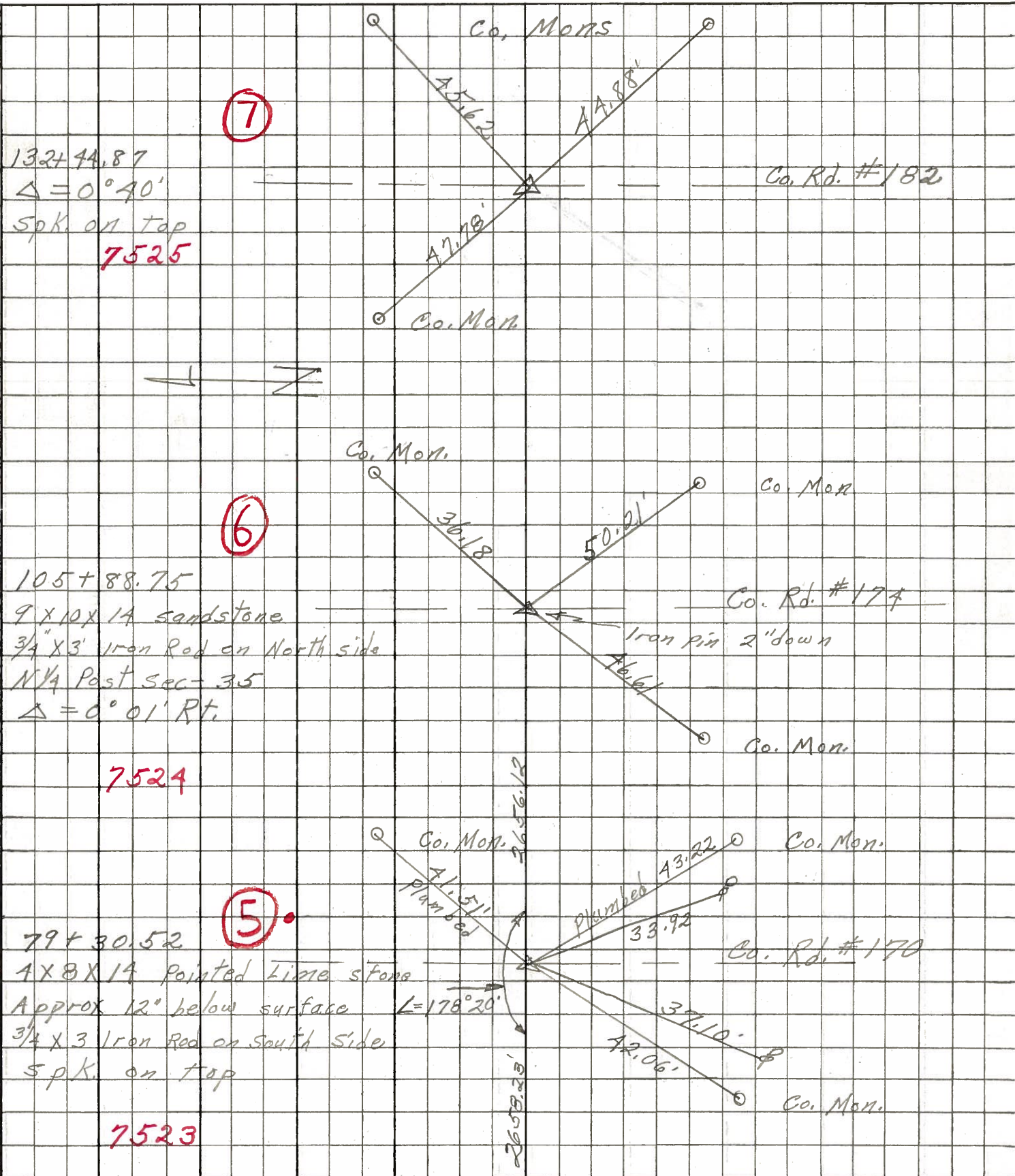
LEFT CENTER LINE S.R. #523 RIGHT



PERSONNEL TITLE PERSONNEL TITLE
 Schneider _____
 Barbour _____
 Potts _____

COUNTY Sandusky DATE 4-25-68
 S. R. 523 WEATHER Windy-Cloudy
 SEC. S.R.#19 to S.R.#53 TEMP. 30°

DESCRIPTION Ties for Control Points LEFT CENTER LINE RIGHT JOB NO.



PERSONNEL TITLE PERSONNEL TITLE

COUNTY Sandusky DATE Nov. 19, 1963

Sworden

Bowers

Jamison

S. R. # 523

WEATHER Clear

SEC. _____ TEMP. + 50°

DESCRIPTION Control Points

JOB NO. _____

