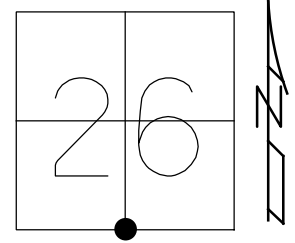


O.D.O.T. DISTRICT 2 SURVEY OFFICE (USE ONLY)

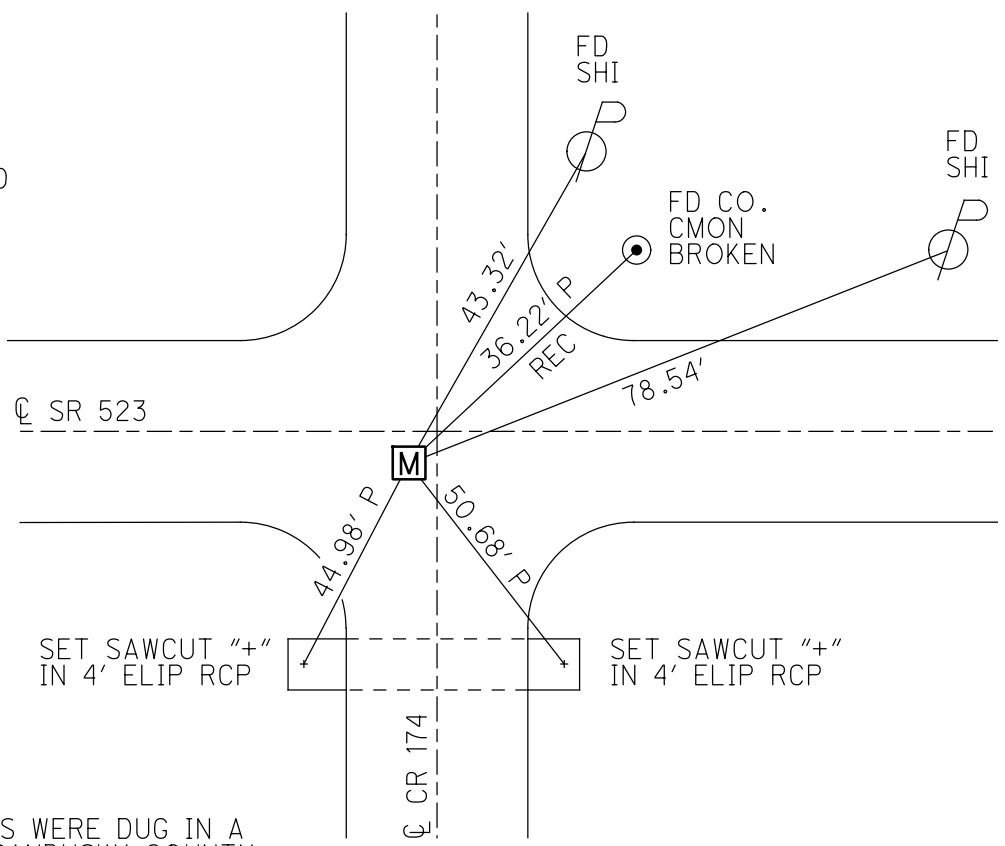
PERSONNEL _____ REFERENCE NO. 6 SHEET 6 OF 11
 NOTES MILLER DATE 12/13/18 ROUTE SR 523
 H.C. LEU WEATHER SUNNY COUNTY SANDUSKY
 R.C. MILLER TEMP. 32° TOWNSHIP RICE
 DWG BY MILLER PID 84079 SECTION 26
 T 6 N R 15 E

TYPE MONUMENT MONBOX W/ 1" IPIN W/ DIMPLE
 ON SURFACE - ~~BELOW~~ ON
 OFFSET Q PAVEMENT 1.3' ~~±~~ : RT
9.4' TO RT EDGE PAVEMENT
 STATION: 105+88.5



HORIZ.DATUM: NAD83 (2011) GEOID: 2012A
 GRID: NORTHING: 647607.838 EASTING: 1804903.371

RECORD: P.I.
 STA 105+88.75
 $\Delta=00^{\circ}01'$ RT
 FD PK/WASHER
 ATOP PK/WASHER
 ATOP 1"x17"GALV.ROD
 ATOP STONE
 $\pm 22''$ DOWN
 10-17-86
 FD PK/WASHER
 7-15-93, RCC
 SET PK/WASHER
 8-3-93, RCC
 FD MAG/WASHER
 REF6
 7-18-17, DCH
 MON BOX
 W/ 1" IPIN
 W/ DIMPLE
 NEWREF06
 12-13-18, JLL



NOTE:
 ALL SECTION CORNERS WERE DUG IN A
 JOINT EFFORT WITH SANDUSKY COUNTY
 ENGINEER'S OFFICE AND THE CONTRACTOR
 IN JULY 2018. SAN-523-0.00 PID #84079

FD 1"x17" GALV. ROD 7" BELOW
 CKREF06
 FD 3/4" IROD 10" BELOW 0.15' NE
 FD 9"x10"x14" SANDSTONE 24" BELOW
 SET DRILL HOLE
 OREF06 7-24-18, JLL
 SET OFFSET PIN OVER DRILL HOLE IN STONE

O.D.O.T. DISTRICT 2 SURVEY OFFICE (USE ONLY)

PERSONNEL	REFERENCE NO. <u>6</u>	SHEET <u>6</u> OF <u>10</u>
NOTES <u>HOMAN</u>	DATE <u>7-18-17</u>	ROUTE <u>SR 523</u>
H.C. <u>HOMAN</u>	WEATHER <u>SUNNY</u>	COUNTY <u>SANDUSKY</u>
R.C. <u>CARSON</u>	TEMP. <u>80°</u>	TOWNSHIP <u>RICE</u>
		SECTION <u>26</u>
DWG BY <u>HAGEMEYER</u>	PID <u>84079</u>	T <u>6</u> N R <u>15</u> E

TYPE MONUMENT MAG/WASHER

~~ON SURFACE~~ - BELOW 0.1'

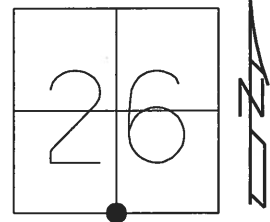
OFFSET \odot PAVEMENT 3' ~~LT~~ : RT

5.5' TO RT EDGE PAVEMENT

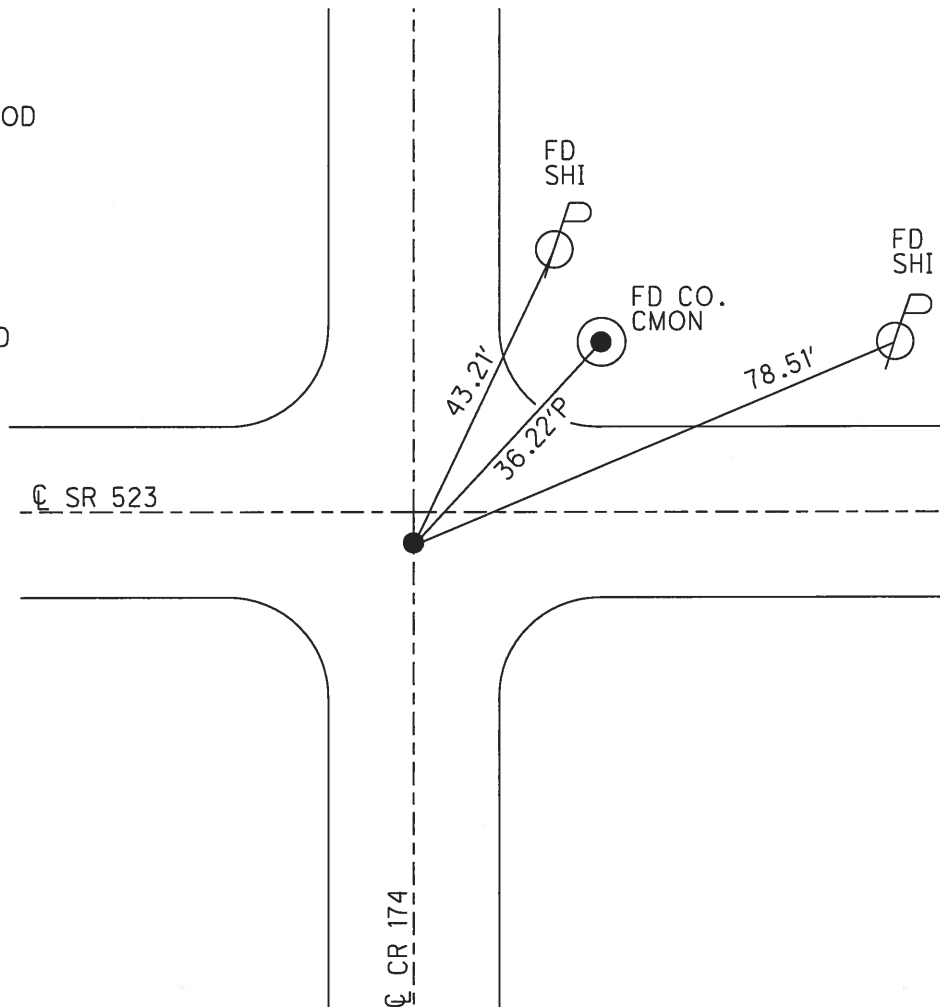
STATION: 106+17

HORZ. DATUM: - GEOID: -

GRID: NORTHING: 647607.975 EASTING: 1804903.305



RECORD: P.I.
 STA. 105+88.75
 $\Delta = 00^{\circ}01' RT$
 FD P.K./WASHER
 ATOP 1"x17"GALV.ROD
 ATOP STONE
 22"± DOWN
 10-17-86
 SET P.K./WASHER
 8-3-93, RCC
 FD MAG/WASHER
 REF6
 7/18/17, DCH
 FD 1"x17" GALV.ROD
 7" BELOW
 CKREF06
 FD 3/4" IPIN
 10" BELOW
 FD 9"x10"x14"
 SANDSTONE
 24" BELOW
 SET DRILLHOLE
 REF06
 7-24-18, JLL



O.D.O.T. DISTRICT 2 SURVEY OFFICE

PERSONNEL _____ REFERENCE NO. 6 SHEET 6 OF 9
 NOTES CHENEY
 H.C. RIPPLE DATE 7-15-1993 ROUTE #523
 R.C. SEYMAN WEATHER FAIR COUNTY SAHDUSKY
 _____ TEMP. 75° TOWNSHIP RICE
 _____ SECTION 26 & 35
 T. 6 N R. 15 E

TYPE MONUMENT PK/WASHER
 ON SURFACE - ~~BELOW~~ ON
~~1" x 17" GALV. ROD~~ - PAV'T. - RIGHT 3'
5.5' TO RT. EDGE PAVEMENT
 S.L.M. 106+17

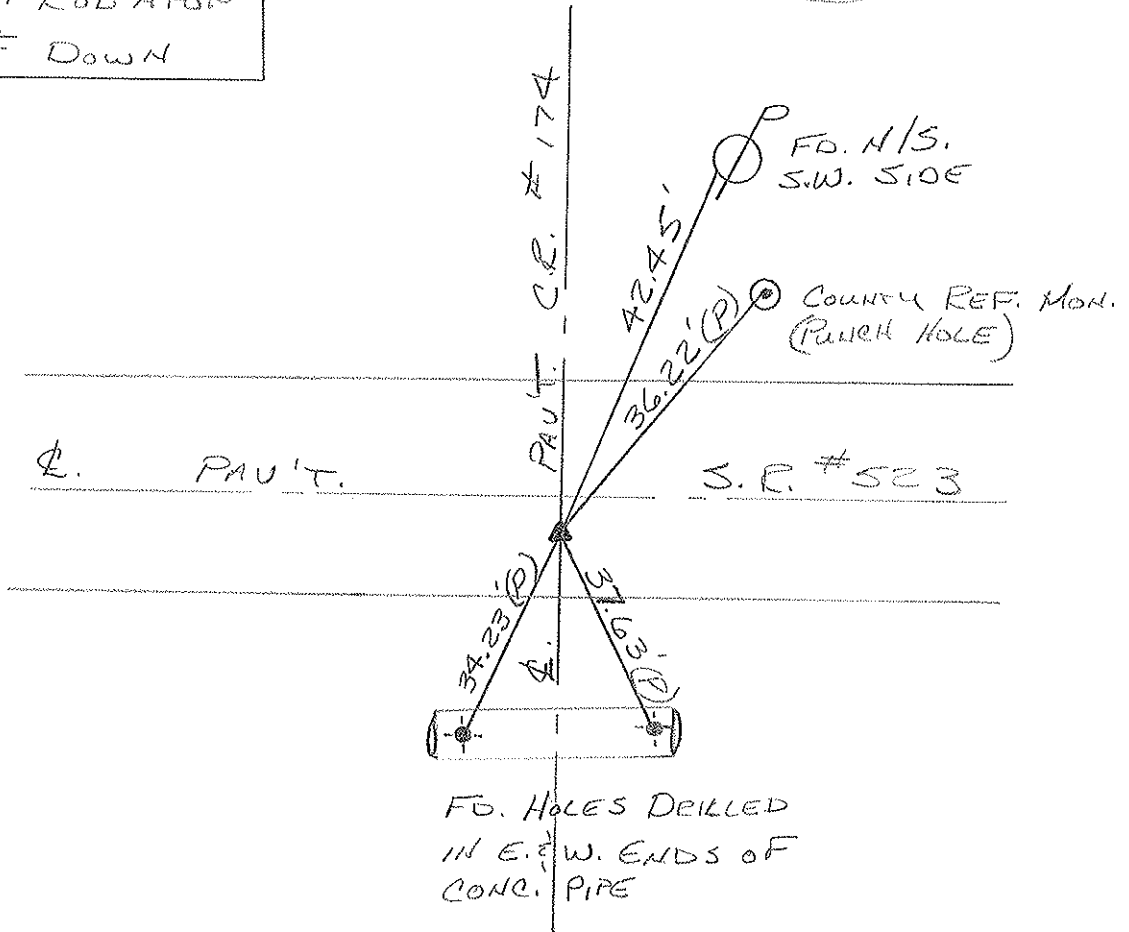
26	35
----	----



RECORD: 10-17-1986

S.L.M. P.I. STA. = 105+88.75
 $\Delta = 30^{\circ} 01' RT$
 PK/WASHER ATOP
 PK/WASHER ATOP
 1" x 17" GALV. ROD ATOP
 STONE 22" ± DOWN

SET PK/WASHER
 8-3-1993
 FCC



O.D.O.T. DISTRICT 2 SURVEY OFFICE

PERSONNEL

NOTES Cronin
 H.C. Ripple
 R.C. Geyman
Barbour

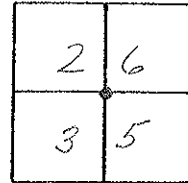
REFERENCE NO. 6

Drawn 11/17/86
 DATE 10/17/86
 WEATHER swamy-windy
 TEMP. 50°

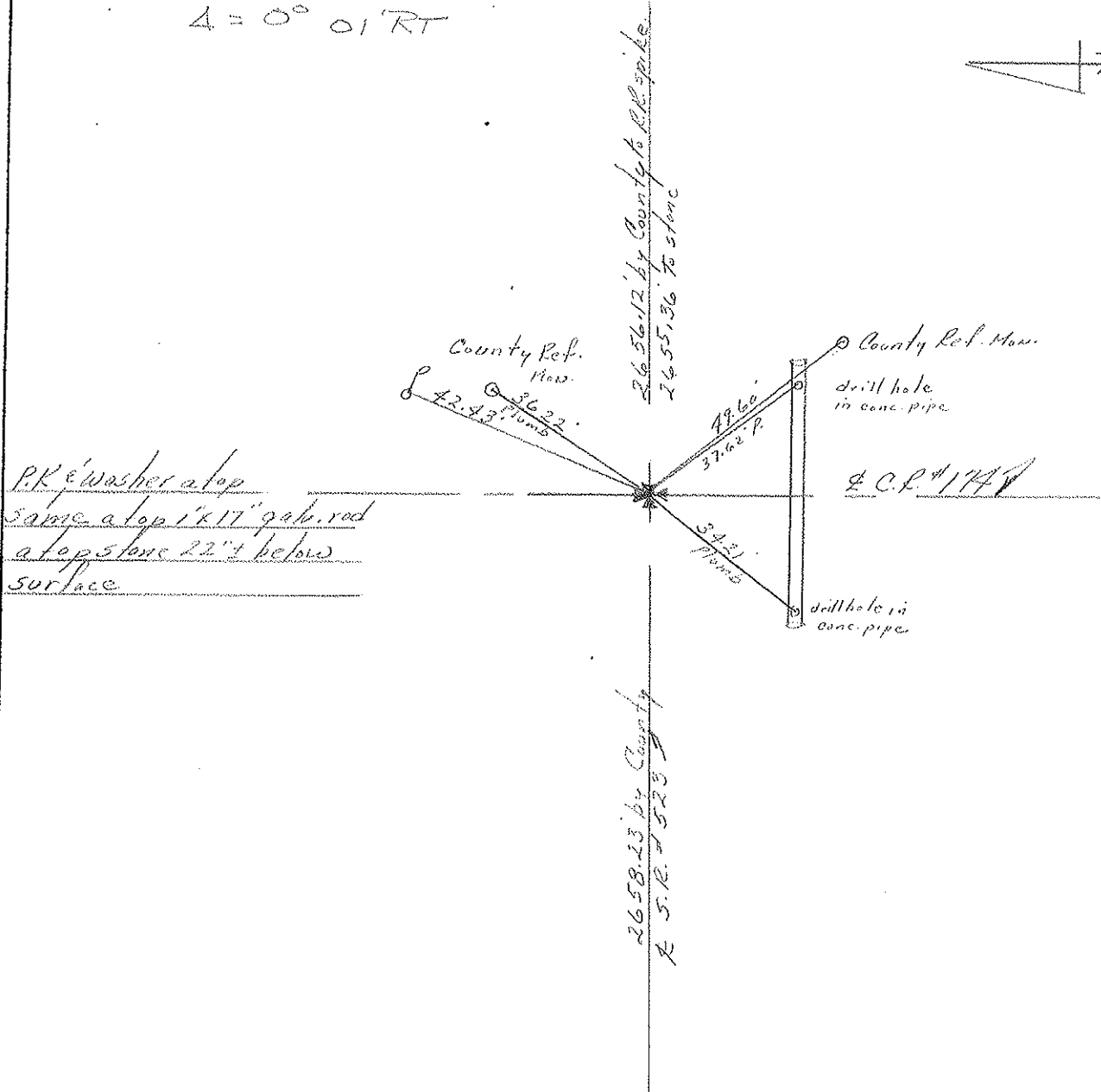
SHEET 6 OF 9

ROUTE #523
 COUNTY Sandusky
 TOWNSHIP Rice
 SECTION 26 & 35
T 6 N R 15 E

TYPE MONUMENT P.K. & washer
 ON SURFACE - BELOW on surface
 LEFT - CL PAV'T. - RIGHT 4" CL & Pav't
JO EDGE PAVEMENT
 S.L.M. 105+88.75



$\Delta = 0^{\circ} 01' RT$



Drawn 3/4/76

DATE 2/25/76

PERSONNEL	TITLE	PERSONNEL	TITLE
Cronin		Schneider	
Pipple		Mosser	
Geyman		Barbour	

COUNTY Sandusky

S. R. # 523

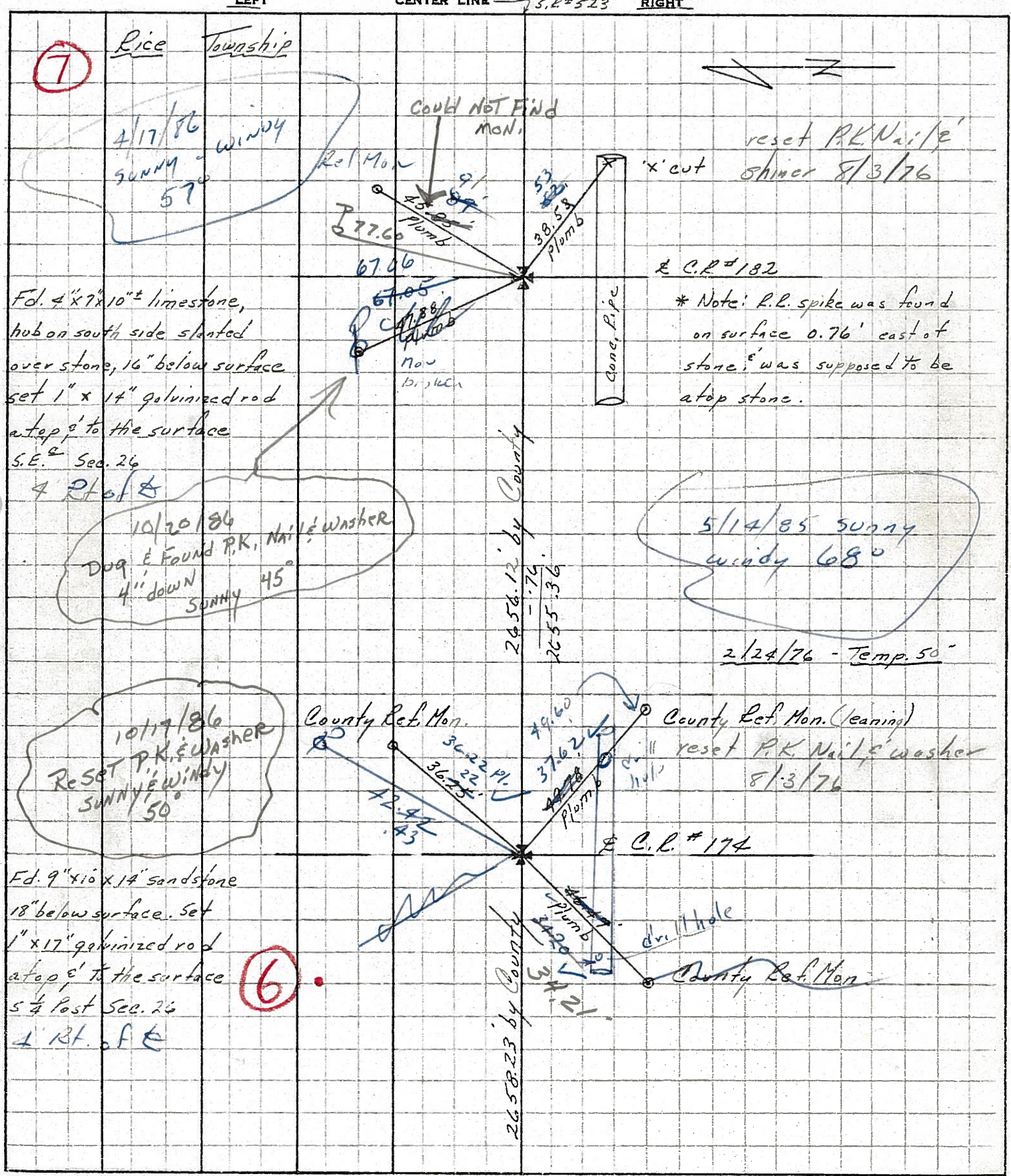
WEATHER sunny

SEC. S.R. #19 to S.R. #53

TEMP 62°

DESCRIPTION Ties for Control Points

JOB NO.



PERSONNEL TITLE PERSONNEL TITLE
 Cronin Schneider
 Ripple Mosser
 Geyman Barbour

COUNTY Sandusky

Drawn 3/4/76

DATE 2/25/76

S. R. # 523

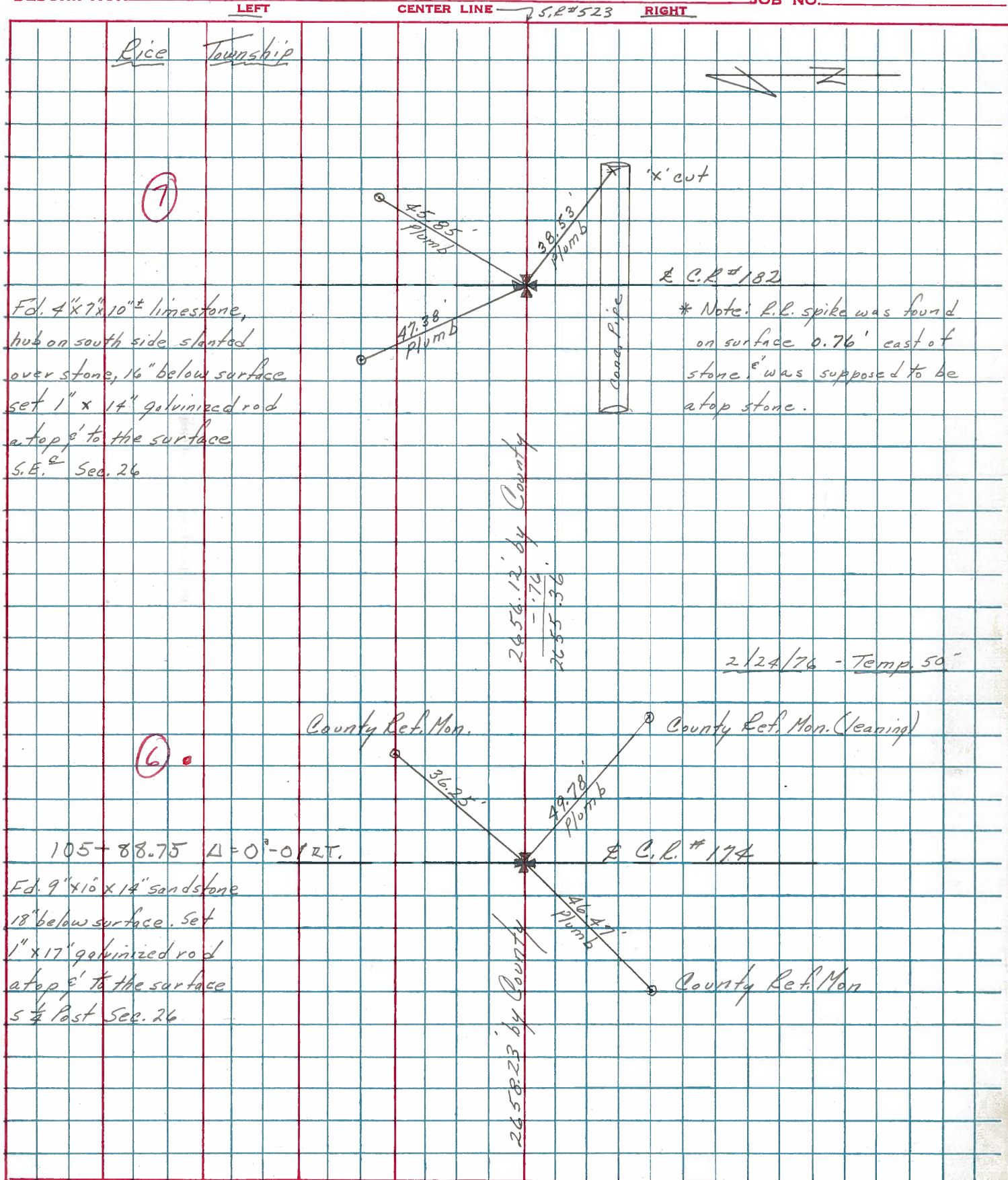
WEATHER sunny

SEC. S.R. #19 to S.R. #53

TEMP. 62°

DESCRIPTION Ties for Control Points

JOB NO.



(7)

(6)

Fd. 4"x7"x10"± limestone,
 hub on south side slanted
 over stone, 16" below surface
 set 1" x 14" galvanized rod
 atop 9" to the surface
 S.E. Sec. 26

105-88.75 Δ=0°-01 RT.
 Fd. 9"x10"x14" sandstone
 18" below surface. Set
 1" x 17" galvanized rod
 atop 9" to the surface
 S.E. Past Sec. 26

± C.R. #182

* Note: R.L. spike was found
 on surface 0.76' east of
 stone, it was supposed to be
 atop stone.

2/24/76 - Temp. 50°

County Ref. Mon.

County Ref. Mon. (leaning)

± C.R. #174

County Ref. Mon

2656.12' by County
 - .76'
 2655.36'

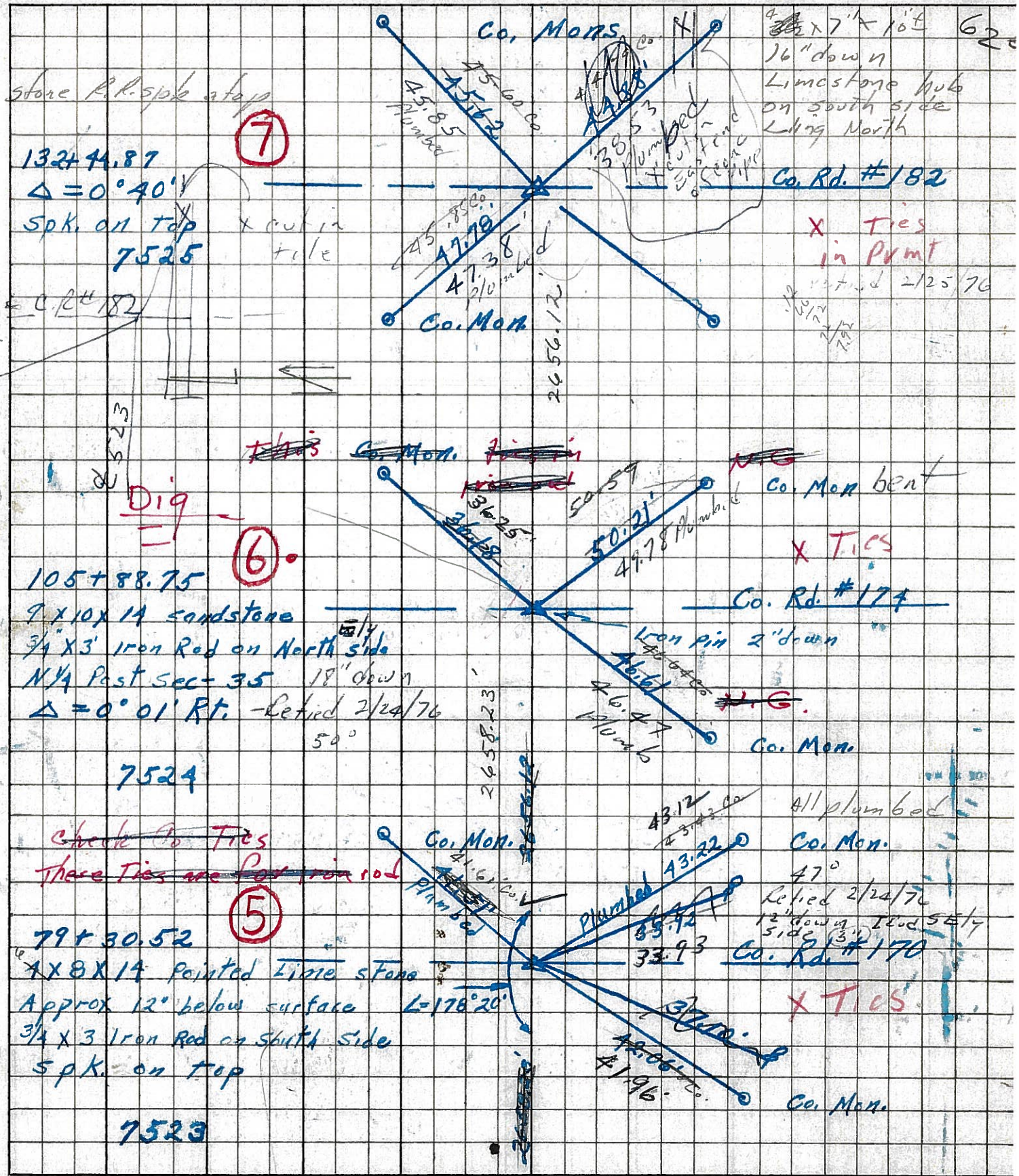
2658.23 by County

Rice Township

LEFT CENTER LINE S.R.#523 RIGHT

PERSONNEL TITLE PERSONNEL TITLE COUNTY Sandusky DATE 4-25-68
 Schneider
 Barbour
 Potts
 S. R. 523 WEATHER windy - cloudy
 SEC. S.R.#19 to SR.#53 TEMP. 30°

DESCRIPTION Ties for Control Points LEFT CENTER LINE RIGHT JOB NO.



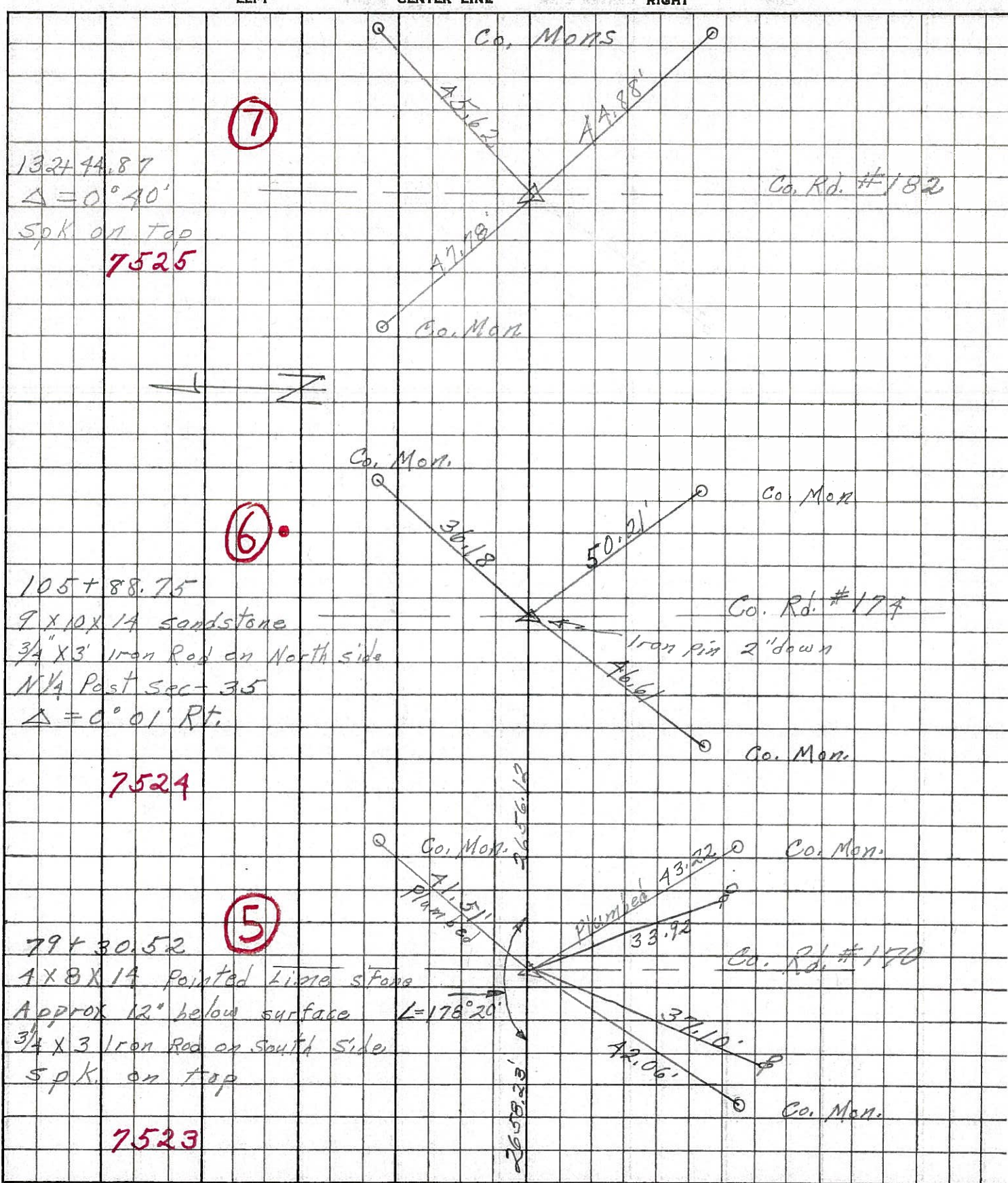
PERSONNEL TITLE PERSONNEL TITLE
 Schneider _____
 Barbour _____
 Potts _____

COUNTY Sandusky DATE 4-25-68

S. R. 523 WEATHER Windy-Cloudy

SEC. S.R. #19 to S.R. #53 TEMP. 30°

DESCRIPTION Ties for Control Points JOB NO. _____



PERSONNEL TITLE PERSONNEL TITLE

COUNTY Sandusky DATE Nov. 19, 1963

Sworden _____

S. R. #523 WEATHER Clear

Bowers _____

SEC. _____ TEMP. +50°

Jamison _____

DESCRIPTION Control Points JOB NO. _____

