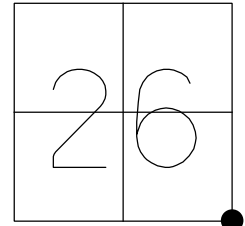


O.D.O.T. DISTRICT 2 SURVEY OFFICE (USE ONLY)

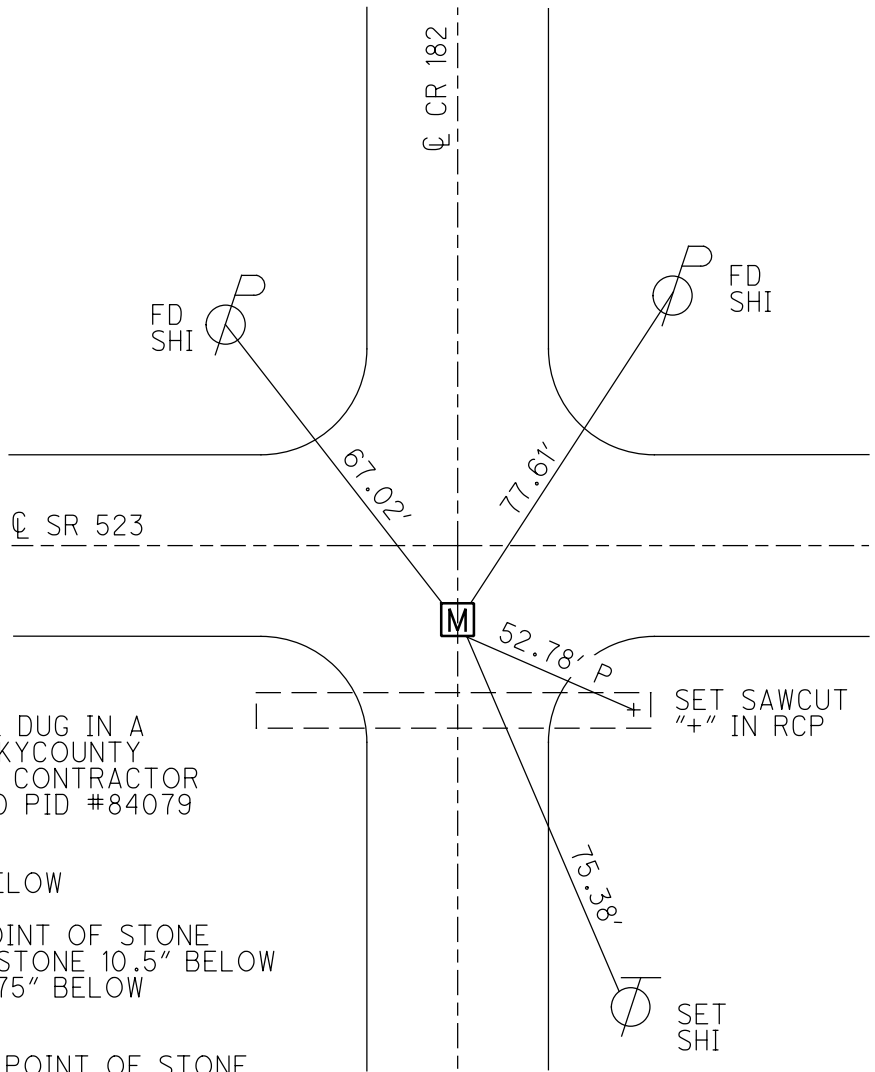
PERSONNEL _____ REFERENCE NO. 7 SHEET 7 OF 11
 NOTES MILLER DATE 12/10/18 ROUTE SR 523
 H.C. LEU WEATHER OVERCAST COUNTY SANDUSKY
 R.C. MILLER TEMP. 27° TOWNSHIP RICE
 SECTION 26
 DWG BY MILLER PID _____ T 6 N R 15 E

TYPE MONUMENT MONBOX W/ 1" IPIN W/ DIMPLE
 ON SURFACE - ~~BELOW~~ ON _____
 OFFSET \odot PAVEMENT 4.5' \pm : RT
5' TO RT EDGE PAVEMENT
 STATION: 132+43.4



HORZ.DATUM: NAD83 (2011) GEOID: 2012A
 GRID: NORTHING: 647594.096 EASTING: 1807558.066

RECORD:
 FD PK/WASHER
 ATOP 1"x14" GALV. ROD
 ATOP STONE
 ±22" DOWN
 FD R.R.SPIKE
 0.76' E. OF STONE &
 WAS SUPPOSED TO BE
 ATOP
 11-17-86
 FD PK/WASHER
 7-15-93, RCC
 FD MAG
 7-18-17, DCH
 FD MON BOX
 W/ 1" IPIN
 W/ DIMPLE
 NEWREF07
 12-10-18, JLL



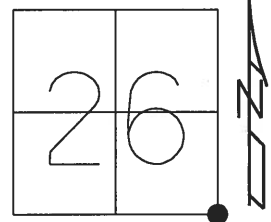
NOTE:
 ALL SECTION CORNERS WERE DUG IN A
 JOINT EFFORT WITH SANDUSKY COUNTY
 ENGINEER'S OFFICE AND THE CONTRACTOR
 IN JULY 2018. SAN-523-0.00 PID #84079

FD PK/WASHER 4.5" BELOW
 FD 1"x14" GALV. ROD 7.5" BELOW
 CKREF07
 FD WOOD HUB OVER HIGH POINT OF STONE
 NEXT TO AN IROD MARKING STONE 10.5" BELOW
 FD 4"x7"x10" LIMESTONE 21.75" BELOW
 USED HIGH POINT
 OREF07 7-24-18, JLL
 SET OFFSET PIN OVER HIGH POINT OF STONE

O.D.O.T. DISTRICT 2 SURVEY OFFICE (USE ONLY)

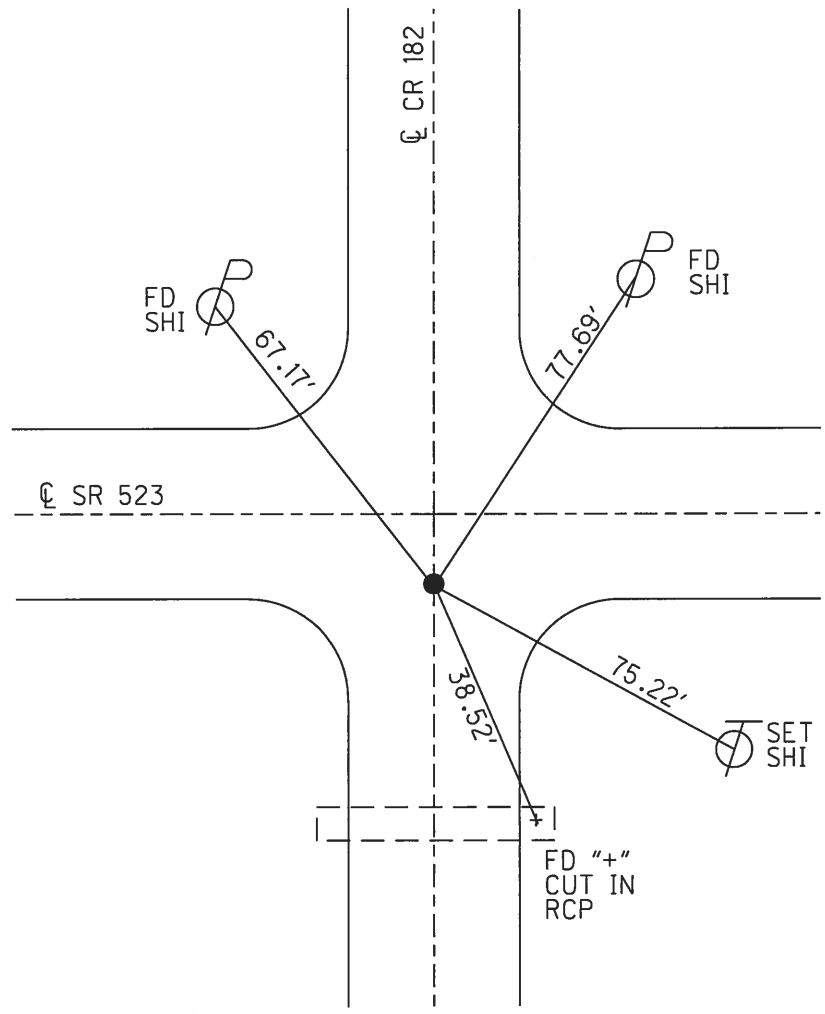
PERSONNEL _____ REFERENCE NO. 7 SHEET 7 OF 10
 NOTES HOMAN DATE 7-18-17 ROUTE SR 523
 H.C. HOMAN WEATHER SUNNY COUNTY SANDUSKY
 R.C. CARSON TEMP. 85° TOWNSHIP RICE
 DWG BY HAGEMEYER PID 84079 SECTION 26
 T 6 N R 15 E

TYPE MONUMENT P.K.NAIL
 ON SURFACE - ~~BELOW~~ ON _____
 OFFSET \bar{C} PAVEMENT 4.5' ~~±~~ : RT
5' TO RT EDGE PAVEMENT
 STATION: 132+81



HORZ.DATUM: - GEOID: -
 GRID: NORTHING: 647594.025 EASTING: 1807558.182

RECORD:
 FD P.K./WASHER
 ATOP 1"x14" GALV. ROD
 ATOP STONE
 22"± DOWN
 FD R.R.SPIKE
 0.76' E. OF STONE &
 WAS SUPPOSED TO BE
 ATOP
 11-17-86
 FD P.K./WASHER
 4.5" BELOW
 7/18/17, DCH
 FD 1"x14" GALV. ROD
 7.5" BELOW
 CKREF07
 FD WOOD HUB
 NEXT TO IPIN
 10.5" BELOW
 FD 4"x7"x10"
 LIMESTONE
 21.75" BELOW
 REF07
 FD HUB OVER
 HIGH POINT
 OF STONE
 7-24-18, JLL



O.D.O.T. DISTRICT 2 SURVEY OFFICE

PERSONNEL

REFERENCE NO. 7

SHEET 7 OF 9

NOTES CAGNEY

H.C. PURPLE

R.C. GERMAN

DATE 7-15-1993

WEATHER FAIR

TEMP. 75°

ROUTE # 523

COUNTY SANDUSKY

TOWNSHIP RICE

SECTION 25, 26, 35 & 36

T 6 N R 15 E

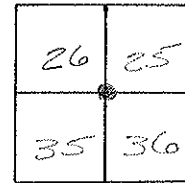
TYPE MONUMENT PK/WASHER

~~ON~~ SURFACE - BELOW 4"

~~LEFT~~ - ℄ PAV'T. - RIGHT 4.5'

5' TO RT. EDGE PAVEMENT

S.L.M. 132+81



RECORD: 10-20-1986

PK/WASHER ATOP

1" x 14" GALV. ROD ATOP

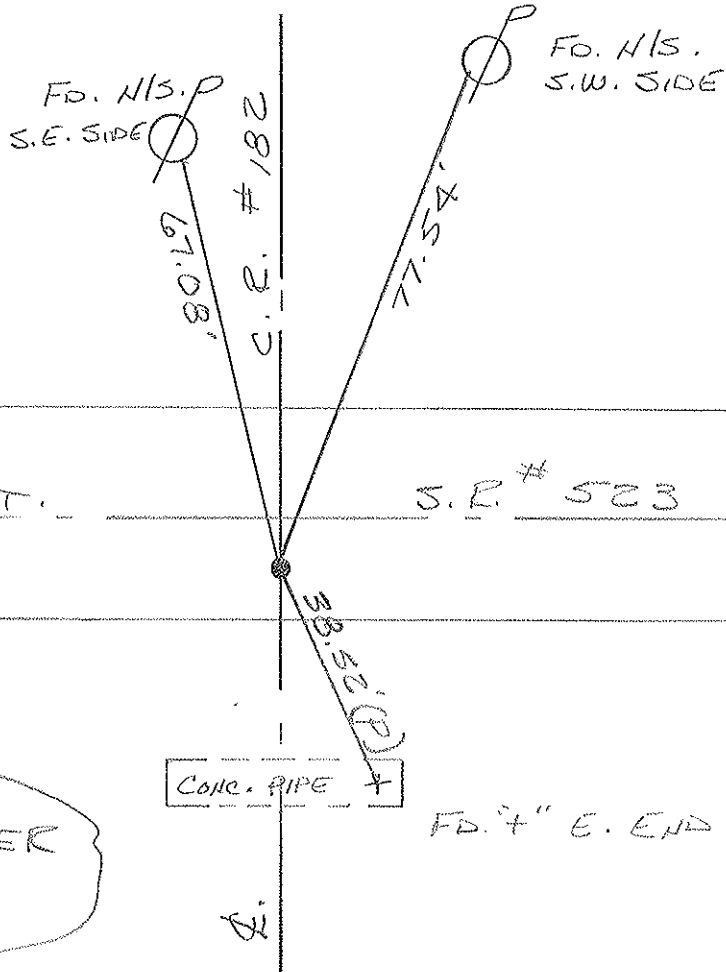
STONE 22" ± DOWN

*NOTE: P.R. SPK. WAS FD.

0.76' E. OF STONE

WAS SUPPOSED TO BE

ATOP.



SET PK/WASHER
 8-3-1993
 REC

O.D.O.T. DISTRICT 2 SURVEY OFFICE

PERSONNEL

NOTES Cromin
 H.C. Ripple
 R.C. Geyman
Barbour

REFERENCE NO. 7

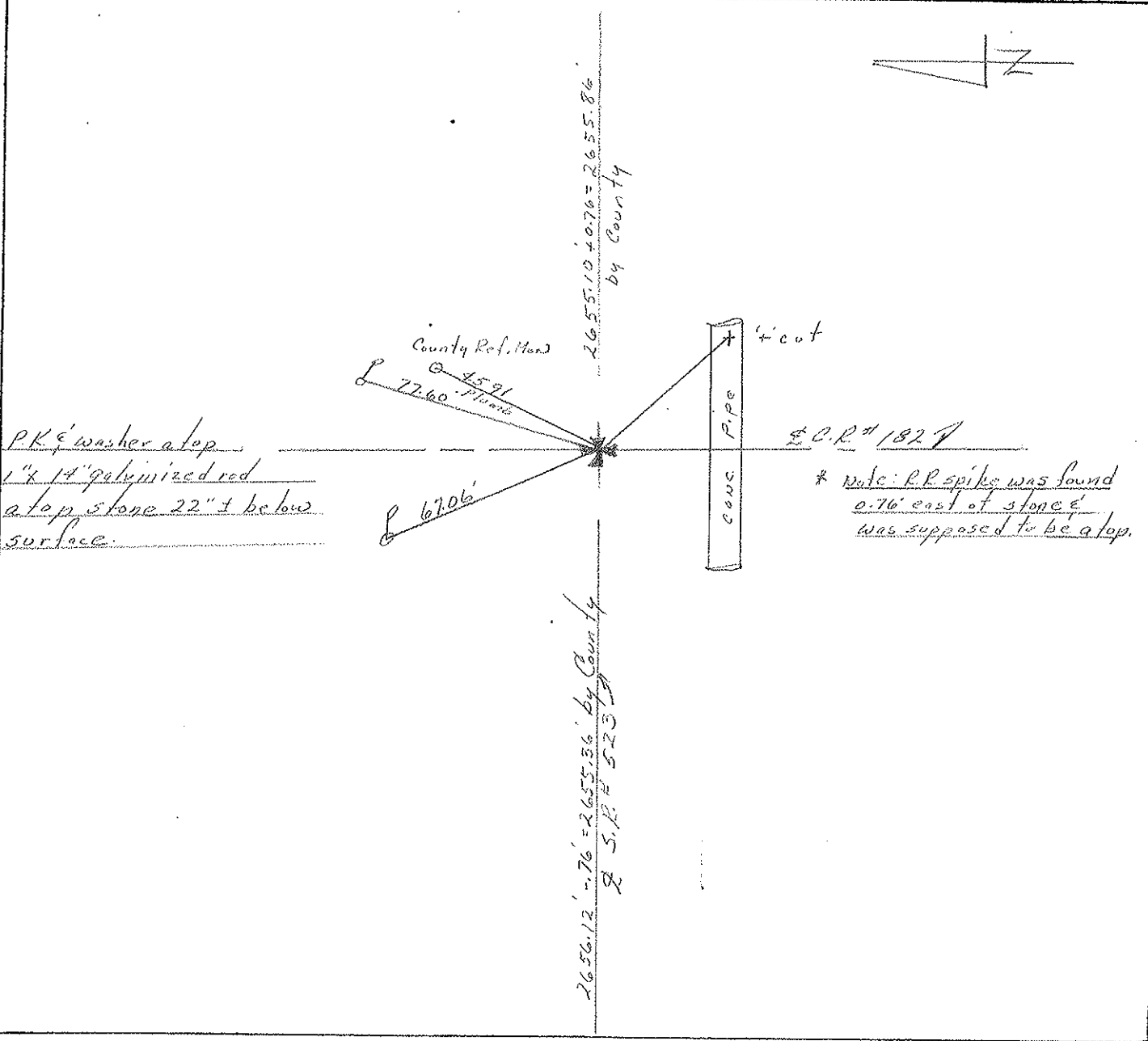
DRAWN 11/17/86
 DATE 10/20/86
 WEATHER sunny-windy
 TEMP. 45°

SHEET 7 OF 9

ROUTE #523
 COUNTY Sandusky
 TOWNSHIP Rice
 SECTION 25, 26, 35, & 36
T 6 N R 15 E

TYPE MONUMENT P.K. & washer
 ON SURFACE - BELOW 4" below surface
 LEFT - € PAV'T. - RIGHT 4' ± R.L. & Pav't.
TO EDGE PAVEMENT
 S.L.M. _____

26	25
35	36



Drawn 3/4 1976
DATE 2/25/76

PERSONNEL	TITLE	PERSONNEL	TITLE
Cranin		Schneider	
Pipple		Mosser	
Geyman		Barbour	

COUNTY Sandusky

S. R. # 523

WEATHER sunny

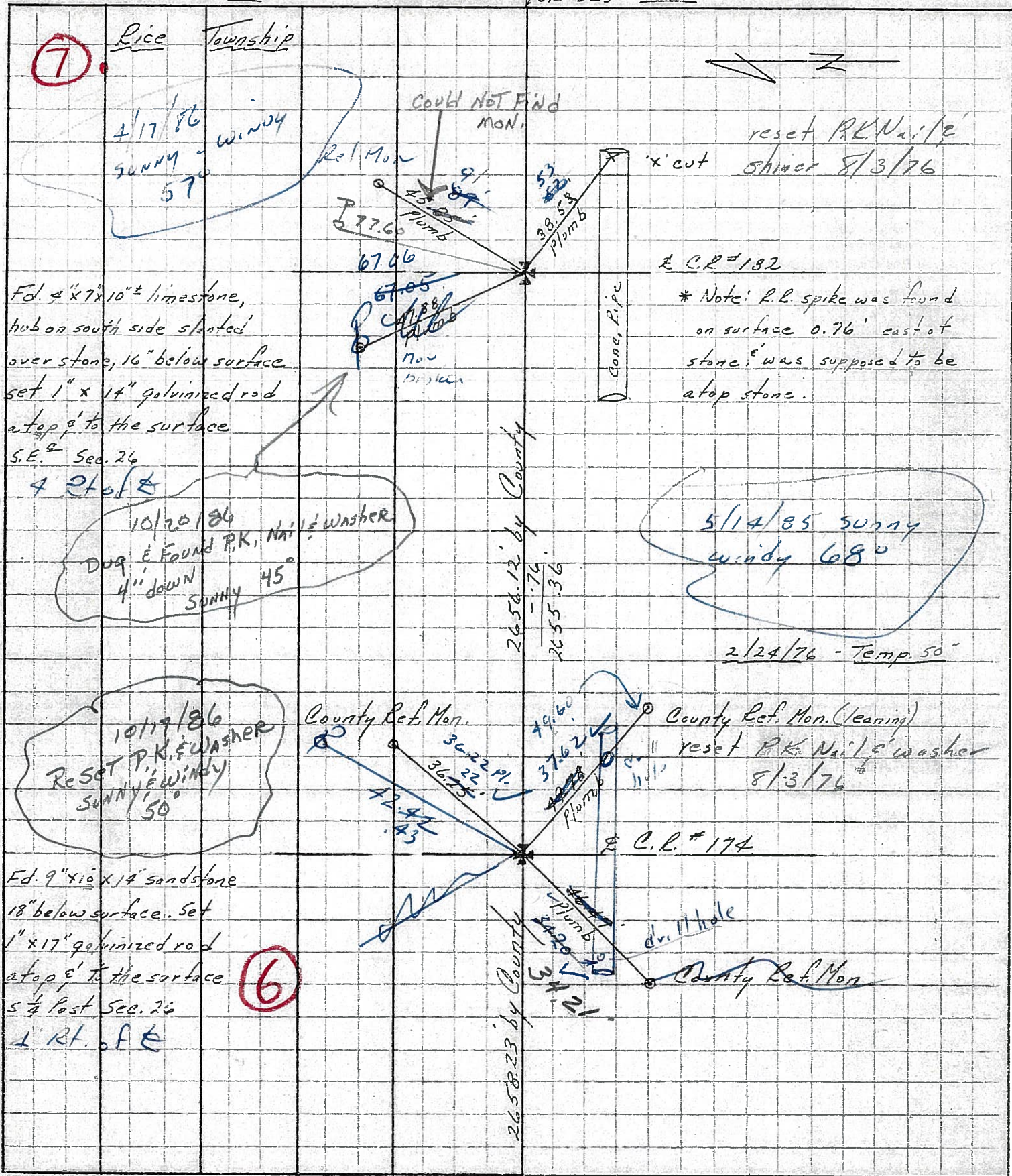
SEC. S.R. #19 to S.R. #53

TEMP 62°

DESCRIPTION Ties for Control Points

JOB NO.

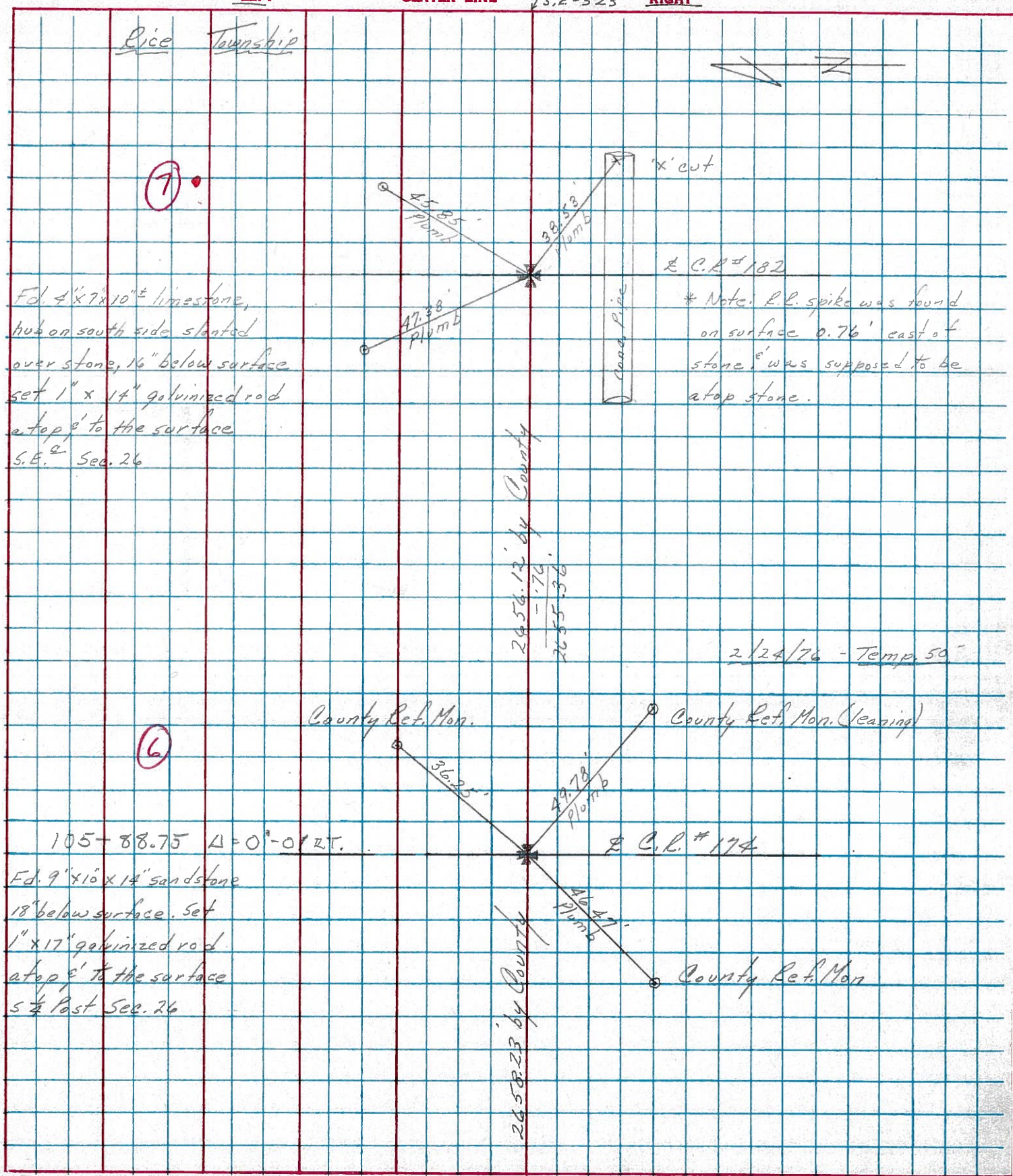
LEFT CENTER LINE RIGHT



PERSONNEL TITLE PERSONNEL TITLE
Cramin _____ Schneider _____
Pipple _____ Mosser _____
Geyman _____ Barbour _____

COUNTY Sandusky
 S. R. # 523
 SEC. S.R.#19 to S.R.#53
 WEATHER sunny
 TEMP. 62°

DESCRIPTION Ties for Control Points LEFT CENTER LINE S.R.#523 RIGHT JOB NO. _____



(7)
 Fd. 4'x7x10" limestone,
 hub on south side slanted
 over stone, 16" below surface
 set 1" x 14" galvanized rod
 atop 3' to the surface
 S.E. 1/4 Sec. 26

(6)
 105-88.75 Δ = 0°-0' RT.
 Fd. 9'x10x14" sandstone
 18" below surface. Set
 1" x 17" galvanized rod
 atop 3' to the surface
 S 1/2 Past Sec. 26

2656.12' by County
 - .76'
 = 2655.36'
 2658.23' by County

± C.R.#182

± C.R.#174

PERSONNEL TITLE PERSONNEL TITLE

Schneider
Barbour
Potts

COUNTY Sandusky

DATE 1-25-68

S. R. 523

WEATHER windy - cloudy

SEC. S.R.#19 to SR.#53

TEMP. 30°

DESCRIPTION

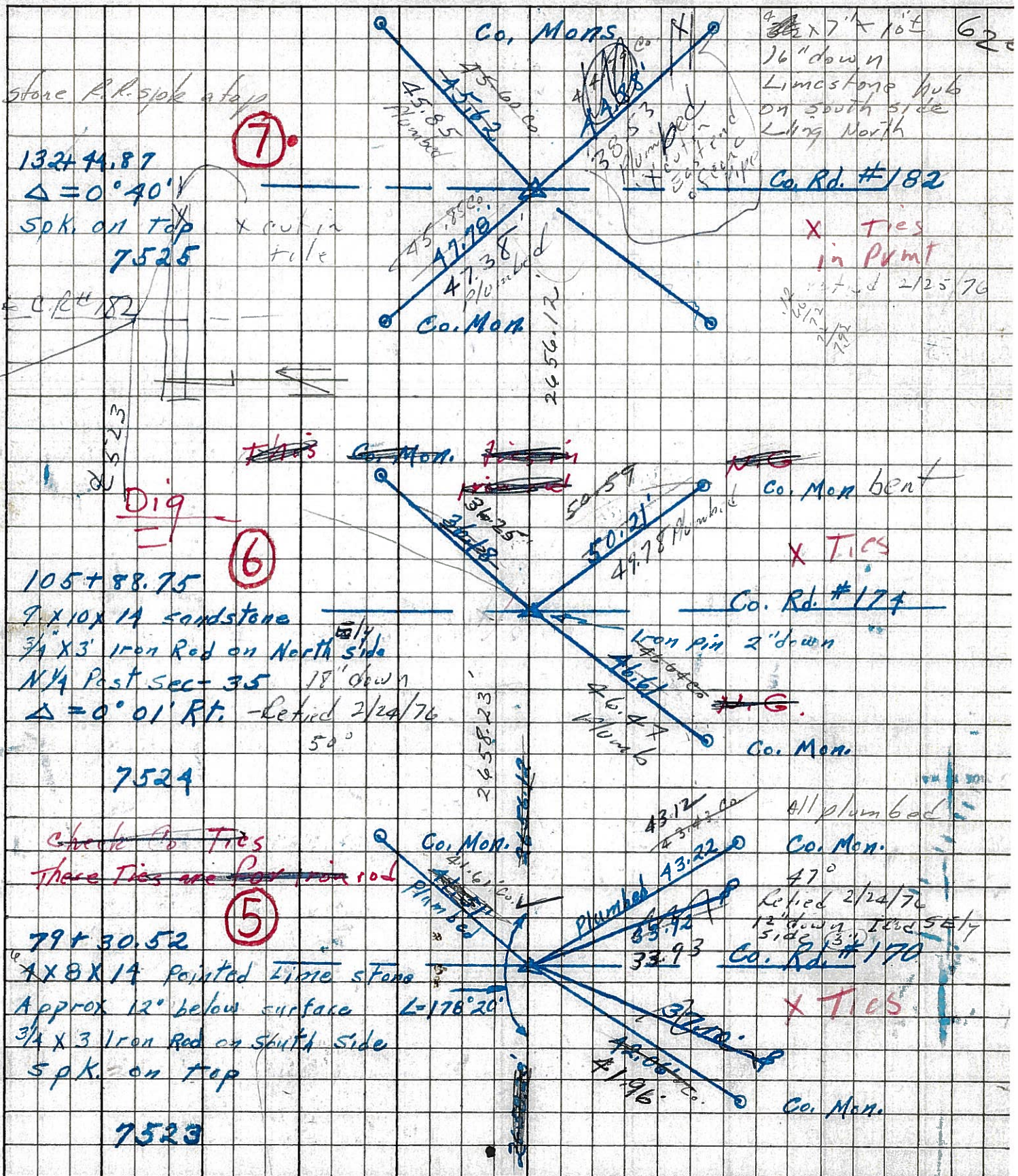
Ties for Control Points

JOB NO.

LEFT

CENTER LINE

RIGHT



132+44.87
 $\Delta = 0^\circ 40'$
Spk. on top
7525

7

105+88.75
9x10x14 sandstone
3/4x3 Iron Rod on North side
N 1/4 Past Sec-35
 $\Delta = 0^\circ 01' \text{ Rt.}$
7524

6

79+30.52
1x8x14 pointed lime stone
Approx 12" below surface
3/4x3 Iron Rod on South side
Spk. on top
7523

5

3/8x7" 10' 62'
16" down
Limestone hub
on south side
Lying North

Co. Rd. #182
X Ties
in Pkmt
Retired 2/25/76

Co. Mon bent
X TIES

Co. Rd. #174
Iron pin 2" down
Co. Mon.

all plumbed
Co. Mon.
47°
Retired 2/24/76
12" down Iron SE 1/4
side
Co. Rd. #170

X TIES
Co. Mon.

PERSONNEL TITLE PERSONNEL TITLE

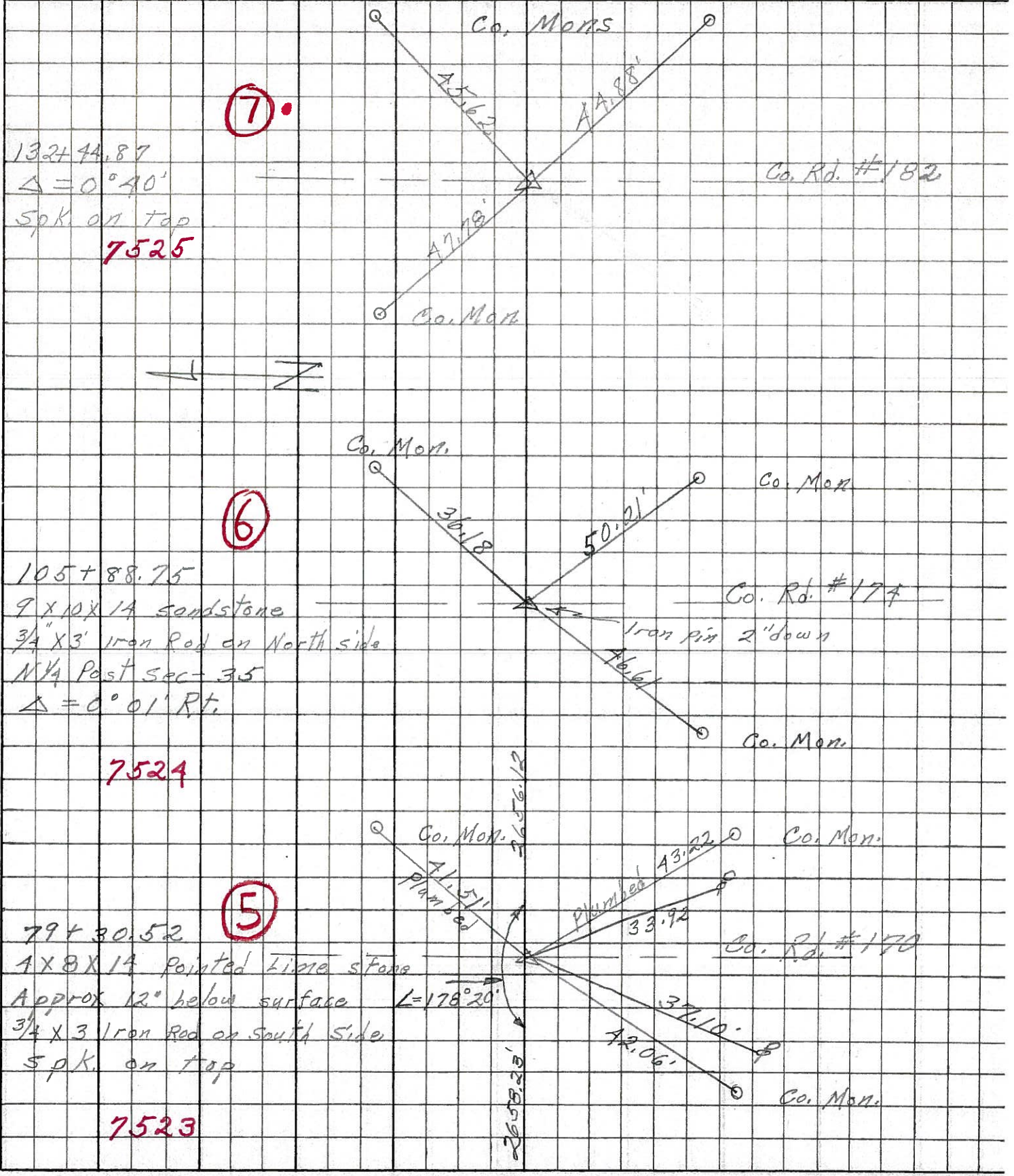
Schneider
Barbour
Potts

COUNTY Sandusky DATE 4-25-68

S. R. 523 WEATHER Windy - Cloudy

SEC. S.R.#19 to SR#53 TEMP. 30°

DESCRIPTION Ties for Control Points LEFT CENTER LINE RIGHT JOB NO.



PERSONNEL TITLE PERSONNEL TITLE

Sworden

COUNTY Sandusky

DATE Nov. 19, 1963

Bowers

S. R. #523

WEATHER Clear

Jamison

SEC. _____

TEMP +50°

DESCRIPTION Control Points

JOB NO. _____

