

O.D.O.T. DISTRICT 2 SURVEY OFFICE (USE ONLY)

PERSONNEL

REFERENCE NO. 8 A

SHEET 9 OF 11

NOTES HOMAN DATE 08-26-2009
 H.C. HOMAN WEATHER CLOUDY
 R.C. ROUSOS TEMP. 80°

ROUTE SR 523
 COUNTY SANDUSKY
 TOWNSHIP RICE
 SECTION 25
 T 6 N R 15 E

DWG BY LEU PID 84079

TYPE MONUMENT D.N.F.- 3/4" IPIN

ON SURFACE - BELOW --

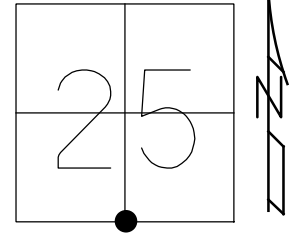
OFFSET \varnothing PAVEMENT 12' ± : RT

3' TO RT EDGE PAVEMENT

STATION: 159+00

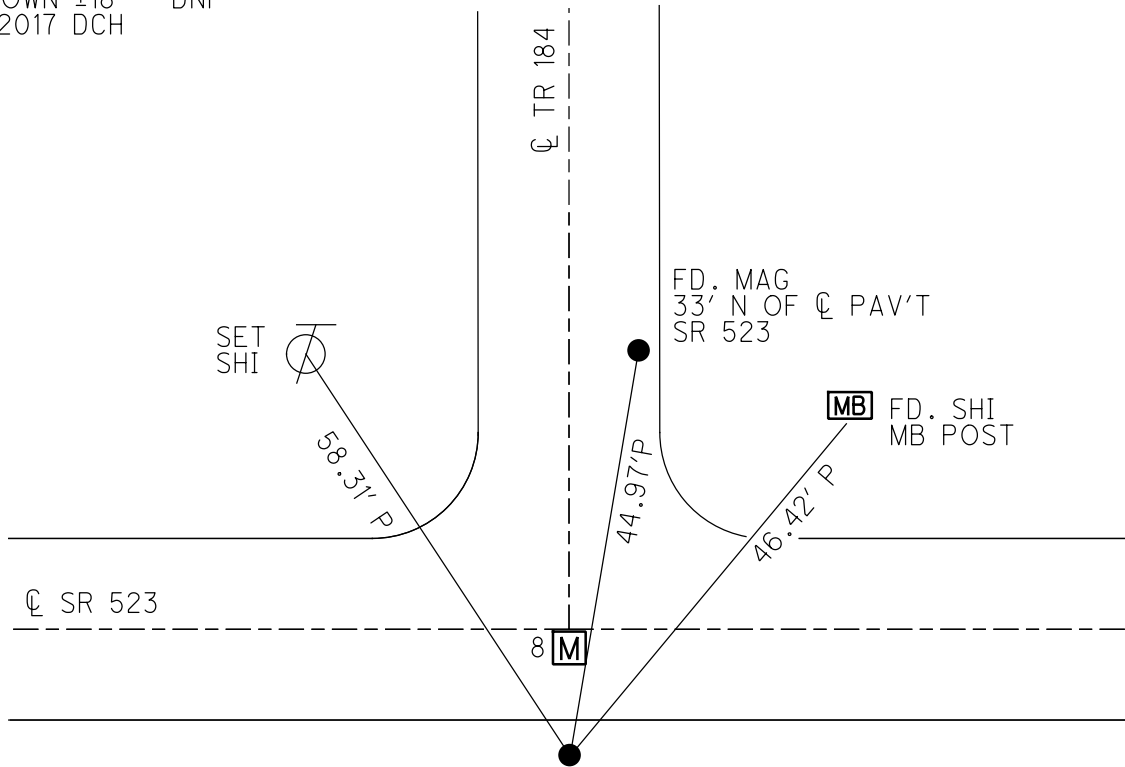
HORZ.DATUM: NAD83 (96) GEOID: 2003

GRID: NORTHING: 647548.726 EASTING: 1810214.392



8 TO 8A = 8.50'

RECORD:
 FD 3/4"x4' IPIN
 SET BY CO.
 USED AS 1/4 POST
 POINT FOUND IN ERROR
 USED BY PRIVATE SURVEYORS
 10-20-86
 DUG DOWN ±18" - DNF
 JULY 2017 DCH



O.D.O.T. DISTRICT 2 SURVEY OFFICE (USE ONLY)

PERSONNEL

REFERENCE NO. 8 A

SHEET 9 OF 10

NOTES HOMAN

DATE 7-19-17

ROUTE SR 523

H.C. HOMAN

WEATHER SUNNY

COUNTY SANDUSKY

R.C. CARSON

TEMP. 75°

TOWNSHIP RICE

SECTION 25

DWG BY HAGEMEYER

PID 84079

T 6 N R 15 E

TYPE MONUMENT 3/4" IPIPE

~~ON SURFACE~~ - BELOW 20"

OFFSET Q PAVEMENT 12' ~~RT~~ : RT

3' TO RT EDGE PAVEMENT

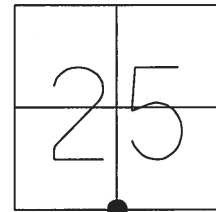
STATION: 159+47

HORZ. DATUM: -

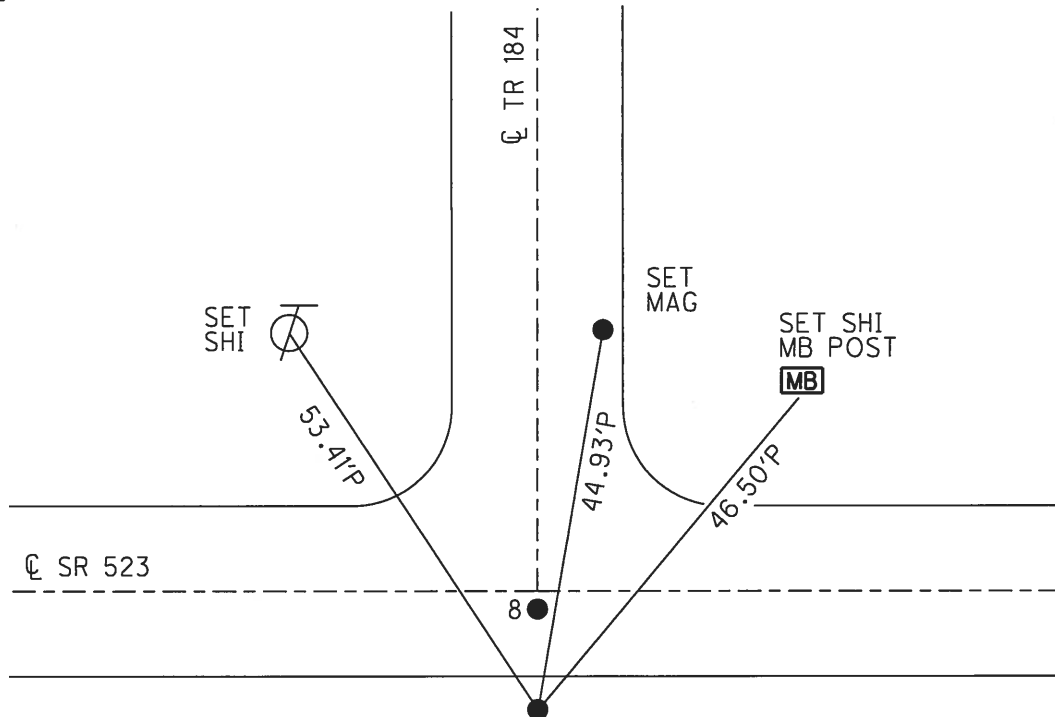
GEOID: -

GRID: NORTHING: 647548.726

EASTING: 1810214.393



RECORD:
FD 3/4"x4' IPIN
SET BY CO.
USED AS 1/4 POST
POINT FOUND IN ERROR
10/20/86
8/3/93



O.D.O.T. DISTRICT 2 SURVEY OFFICE

PERSONNEL

REFERENCE NO. 8

SHEET 8 OF 9

NOTES CHENEY

H.C. RIPPLE

R.C. GEYMAN

DATE 7-15-1993

WEATHER FAIR

TEMP. 75°

ROUTE #523

COUNTY SANDUSKY

TOWNSHIP RICE

SECTION 25 & 36

T. 6 N R. 15 E

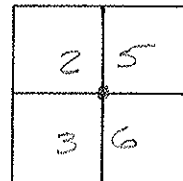
TYPE MONUMENT PK/WASHER

ON SURFACE - ~~BELOW~~ ON

~~1/4~~ - CL PAV'T. - RIGHT 4'

5' TO R EDGE PAVEMENT

S.L.M. 159+47



RECORD: 10-20-1986

S.L.M. P.I. STA. 160+26.83

$\Delta = 00^{\circ}25'$ Lt.

PK/WASHER ATOP SQ. HEAD.

SPK. ATOP 1" x 26.5" I.

PIPE, DUG 6' x 4' HOLE. FD.

STAKE & TILE PIECES ONLY.

REF. BRIDGE PLANS ON FILE @

SAN. Co. ENGR. - FILE # 64-ITEM 23,

2 PAGES

SET PK/WASHER
8-3-1993
FCC

SET N/S. ON RAD.
33' ± N. CL. PAV'T.
S.R. #523

FD. N/S.
S.E. SIDE

MAIL BOX

FD. N/S.
S.W. SIDE

CL. PAV'T.

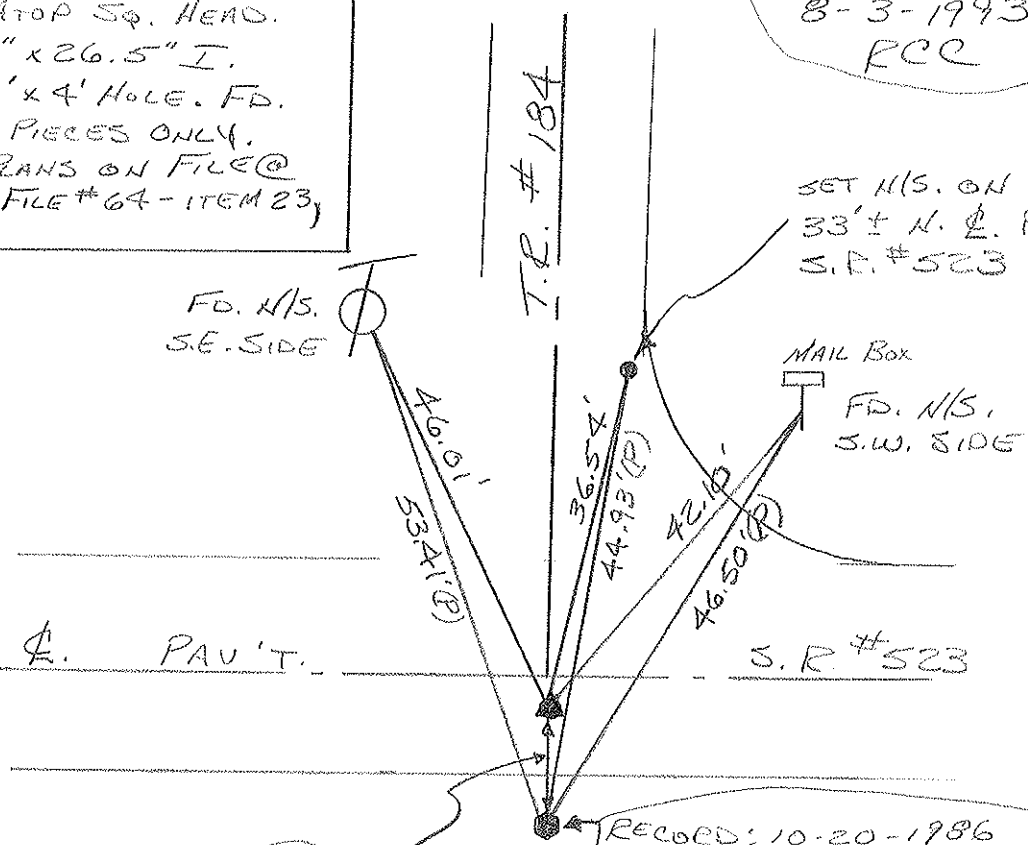
S.R. #523

8.46'

RECORD: 10-20-1986

3/4" x 4' I. ROD WAS SET BY
Co. & USED AS 1/4 POST. THIS PT.
IS IN ERROR - HAS BEEN
USED BY SURVEYORS.

*FD. 8-3-1993: 3' FT. OFF E.P.
12' FT. OFF CL. PAV'T.
20" BELOW SURFACE
PRIVATE
FCC



O.D.O.T. DISTRICT 2 SURVEY OFFICE

PERSONNEL _____

REFERENCE NO. 8

SHEET 8 OF 9

NOTES Cronin

H.C. Ripple

DATE 10/20/86

ROUTE # 523

R.C. Geyman

WEATHER sunny

COUNTY Sandusky

Barbour

TEMP. 45°

TOWNSHIP Rice

SECTION 25 & 36

T 6 N R 15 E

TYPE MONUMENT R.K. washer

ON SURFACE - BELOW on surface

LEFT - € PAW'T. - RIGHT 4" x 4" I. Rod

TO EDGE PAVEMENT

S.L.M. 160+26.83

2	5
3	6



$\Delta = 0^{\circ} 25' LT$

160+26.83 ± S.L.M.

R.K. washer atop

square banded spike atop

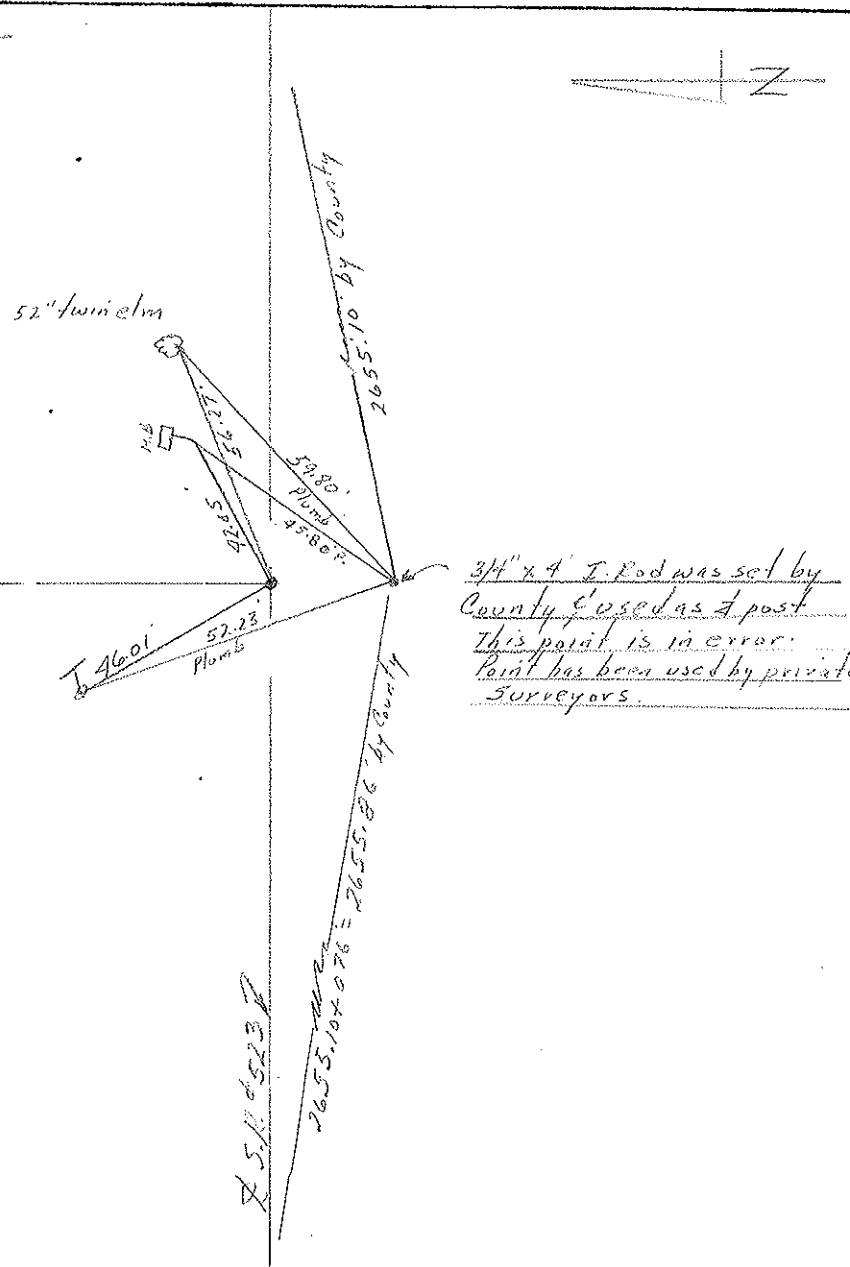
1" x 26 3/4" I. pipe. Dug 6' x 4'

hole. Ed. stake & file pieces

only. Ref: Bridge Plans on

file @ San. Co. Eng. Office. -

File # 64-Item 23-2 pages

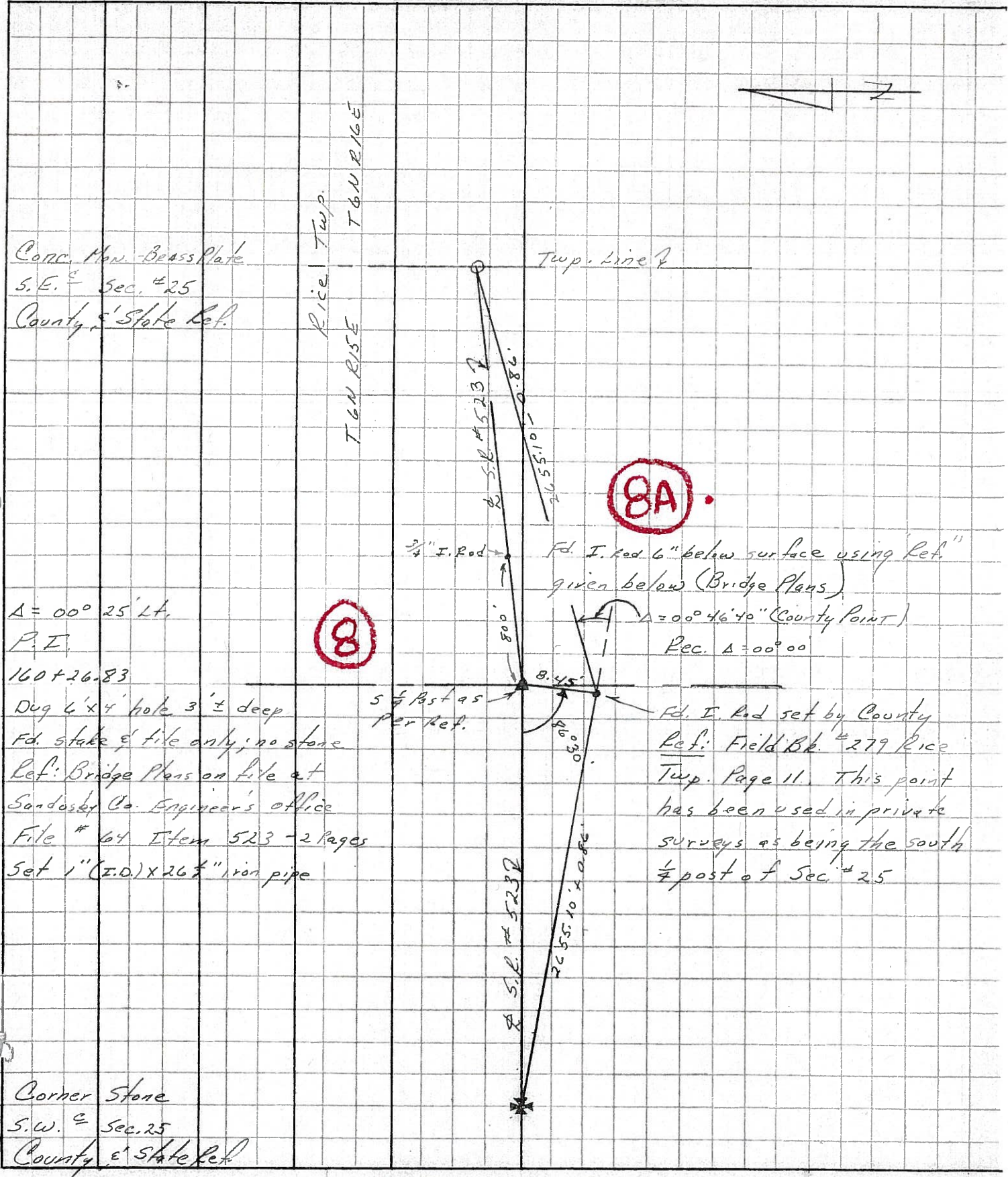


3/4" x 4" I. Rod was set by
County & used as a post
This point is in error.
Point has been used by private
surveyors.

X 5.11 0513

PERSONNEL	TITLE	PERSONNEL	TITLE	COUNTY	DATE
CROONIN		BARBOUR		SANDUSKY	4/14/82
RIPPLE				S. R. # 523	WEATHER SUNNY
GEYMAN				SEC BRIDGE-SAN. 523-03.07	TEMP. 42°
MOSSER					

DESCRIPTION *to R/W Alignment* LEFT CENTER LINE RIGHT JOB NO.



PERSONNEL TITLE PERSONNEL TITLE

Cronin

Ripple

Geyman

COUNTY Sandusky

S. R. # 523

SEC. S.R. #19 to S.R. #53

WEATHER sunny

TEMP. 60°

DESCRIPTION Ties for Control Points

LEFT

CENTER LINE

S.R. #523

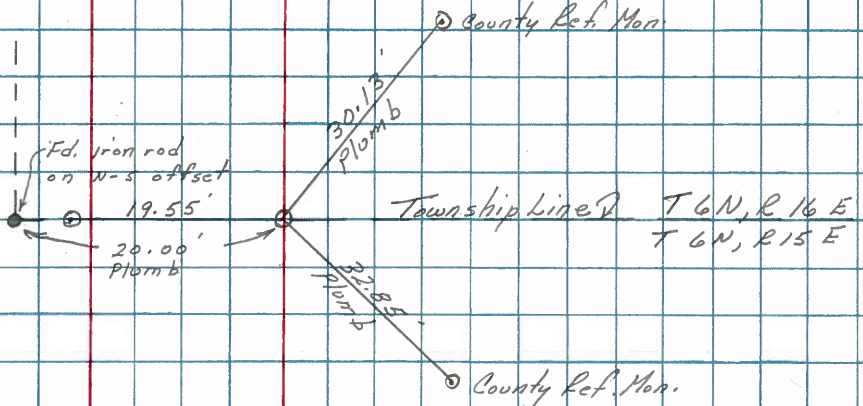
RIGHT

JOB NO.

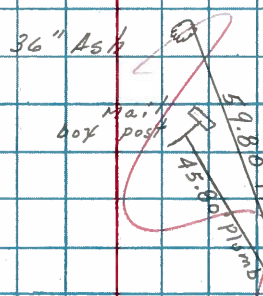
Rice Township

9

Fd. conc. mon. with brass plate 20 1/2" below surface. Set by L. P. Roush Co. Engr. in 1941. Set 16" galvanized rod at top of to the surface S.E. 1/4 Sec. 25



2655.10' by County

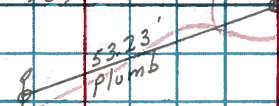


X

8A

Fd. 3/4" x 4' iron rod 3' south of south edge of pavement. Set by County 5 1/4 Past Sec. 25

E.C.R. #184



2655.10' by County +.76' 2655.86'

Retied 2/19/76 Temp 50°

SEE NEW TIES OF 4-14-82

VOID

PERSONNEL TITLE PERSONNEL TITLE

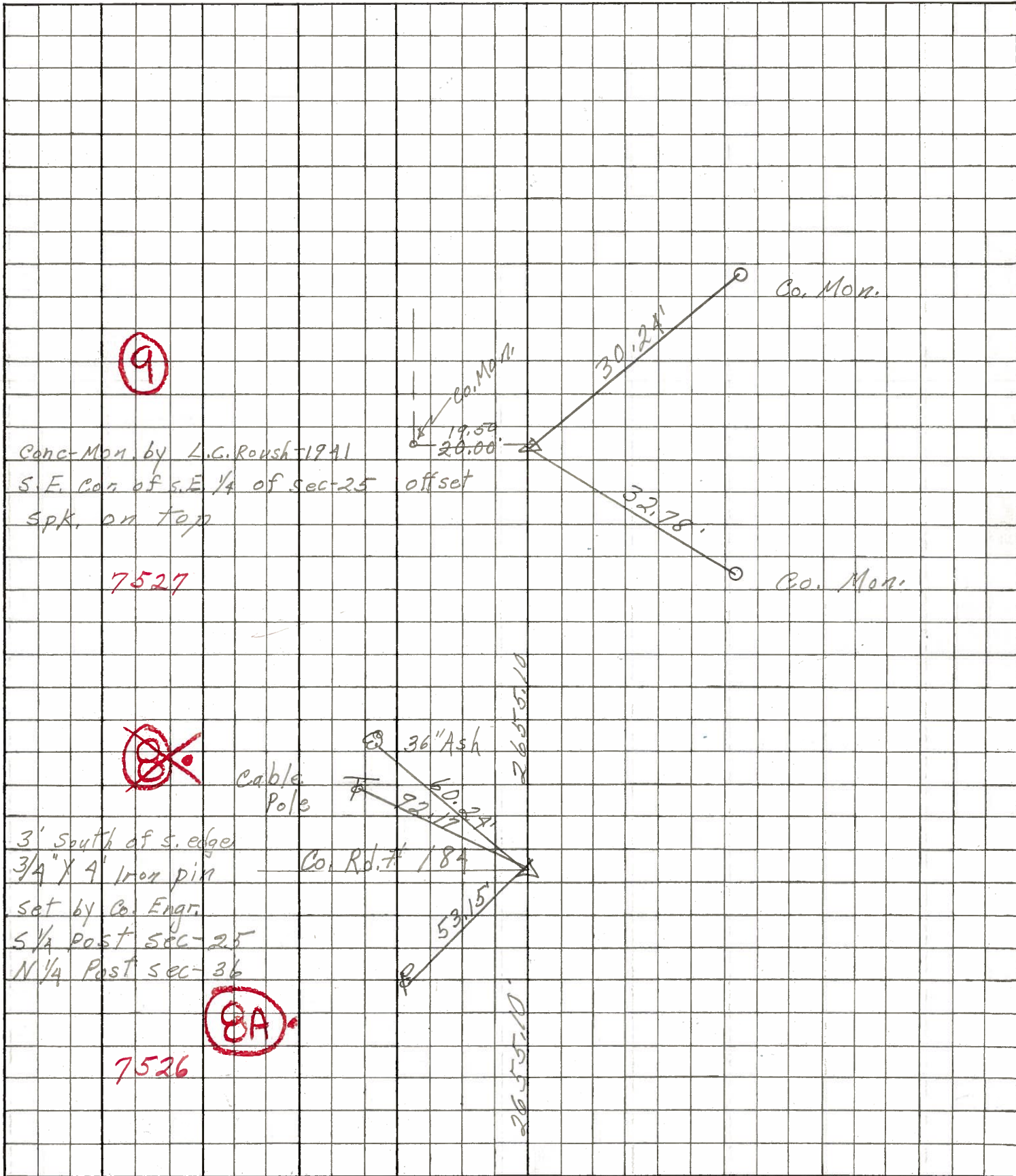
Schneider
Barbour
Potts

COUNTY Sandusky DATE 4-25-68

S. R. 523 WEATHER Windy - Cold

SEC. S.R. #19 to S.R. #53 TEMP. 30°

DESCRIPTION Ties for Control Points LEFT CENTER LINE RIGHT JOB NO.



PERSONNEL TITLE PERSONNEL TITLE

COUNTY Sandusky DATE Nov. 19, 1963

Sworden _____

Bowers _____

Jamison _____

S. R. #523

WEATHER Clear

SEC. _____

TEMP. + 50°

DESCRIPTION Control Points

LEFT

CENTER LINE

RIGHT

JOB NO. _____

