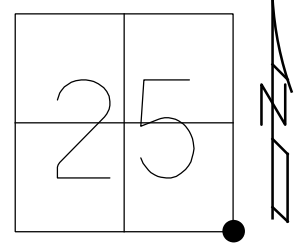


O.D.O.T. DISTRICT 2 SURVEY OFFICE (USE ONLY)

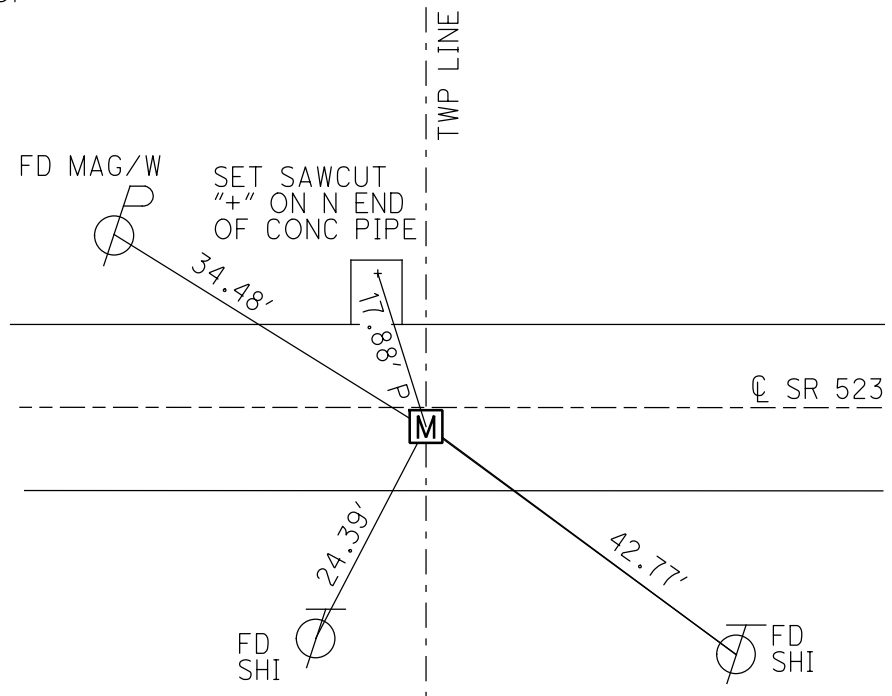
PERSONNEL _____ REFERENCE NO. 9 SHEET 11 OF 11
 NOTES MILLER DATE 12/10/18 ROUTE SR 523
 H.C. LEU WEATHER OVERCAST COUNTY SANDUSKY
 R.C. MILLER TEMP. 27° TOWNSHIP RICE
 DWG BY MILLER PID 84079 SECTION 25
 T 6 N R 15 E

TYPE MONUMENT MONBOX W/ 1" IPIN W/ DIMPLE
 ON SURFACE - ~~BELOW~~ ON
 OFFSET ☐ PAVEMENT 2.2' ~~±~~ : RT
8' TO RT. EDGE PAVEMENT
 STATION: 185+55.4



HORZ. DATUM: NAD83 (2011) GEOID: 2012A
 GRID: NORTHING: 647539.534 EASTING: 1812869.409

RECORD:
 FD PK/WASHER
 ATOP 1"x16" GALVANIZED ROD
 ATOP CMON WITH BRASS TOP
 ±24" DOWN
 SET BY L.C. ROUSH
 SAN.CO.ENGINEER 1941
 11-17-86
 FD PK NAIL
 3.5" BELOW
 7-15-93, RCC
 SET PK/WASHER
 8-3-93, RCC
 FD PK/WASHER
 REF09
 7-19-17, DCH
 FD MON BOX
 W/ 1" IPIN
 W/ DIMPLE
 NEWREF09
 12-10-18, JLL

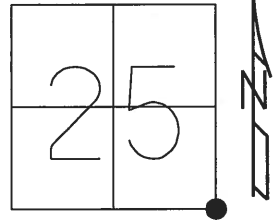


NOTE:
 ALL SECTION CORNERS WERE DUG IN A
 JOINT EFFORT WITH SANDUSKYCOUNTY
 ENGINEER'S OFFICE AND THE CONTRACTOR
 IN JULY 2018. SAN-523-0.00 PID #84079

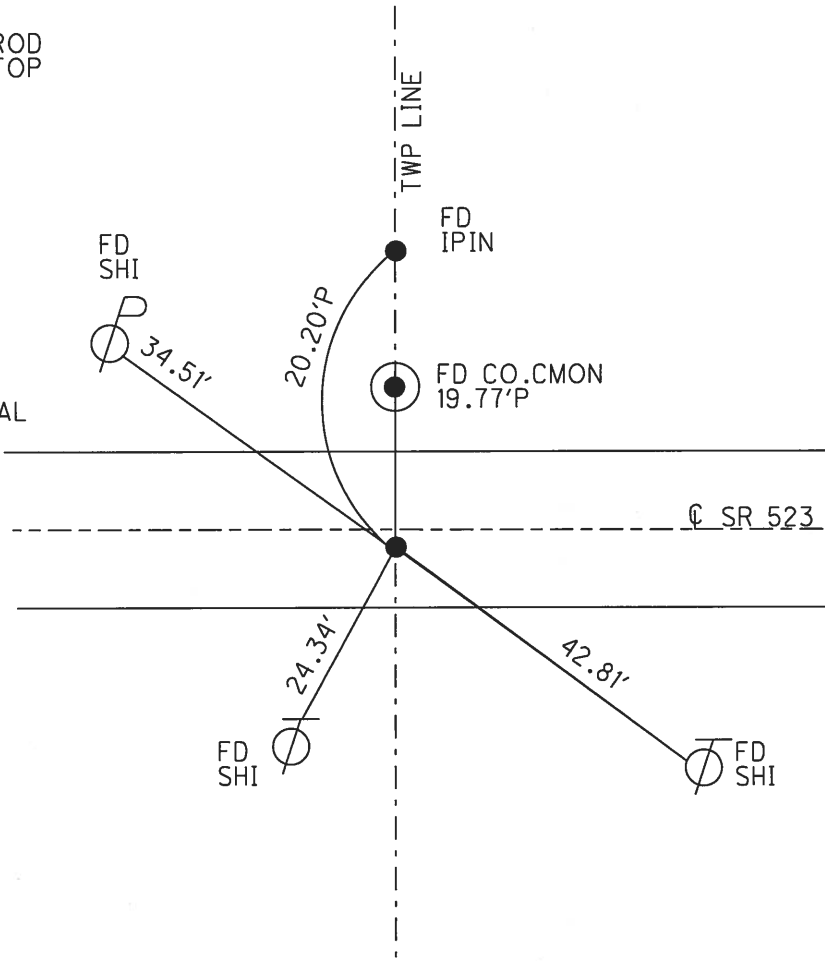
FD PK 3.5" BELOW
 FD 1"x16" GALV. ROD 7.5" BELOW
 CKREF09
 FD HUB LAYING HORIZONTAL OVER TOP OF CMON
 FD CMON W/BRASS DISK W/DIMPLE 25.25" BELOW
 OREF09 7-24-18, JLL
 SET OFFSET PIN OVER CMON

O.D.O.T. DISTRICT 2 SURVEY OFFICE (USE ONLY)

PERSONNEL _____ REFERENCE NO. 9 SHEET 10 OF 10
 NOTES HOMAN DATE 7-19-17 ROUTE SR 523
 H.C. HOMAN WEATHER SUNNY COUNTY SANDUSKY
 R.C. CARSON TEMP. 75° TOWNSHIP RICE
 SECTION 25
 DWG BY HAGEMEYER PID 84079 T 6 N R 15 E
 TYPE MONUMENT P.K./WASHER
 ON SURFACE - ~~BELOW~~ ON
 OFFSET Q PAVEMENT 1' ~~±~~ : RT
8' TO RT. EDGE PAVEMENT
 STATION: 186+08
 HORZ.DATUM: - GEOID: -
 GRID: NORTHING: 647539.457 EASTING: 1812869.241



RECORD:
 FD P.K./WASHER
 ATOP 1"x16" GALVANIZED ROD
 ATOP CMON WITH BRASS TOP
 24"± DOWN
 SET BY L.C. ROUSH
 SAN.CO.ENGINEER 1941
 11-17-86
 FD P.K.NAIL
 3.5" BELOW
 7/15/93, RCC
 FD P.K./WASHER
 REF09
 7/19/17, DCH
 FD 1"x16" GALV. ROD
 7.5" BELOW
 CKREF09
 FD HUB LAYING HORIZONTAL
 OVER TOP OF CMON
 FD CMON W/BRASS MON
 W/DIMPLE
 25.25" BELOW
 REF09
 7-24-18, JLL



O.D.O.T. DISTRICT 2 SURVEY OFFICE

PERSONNEL

REFERENCE NO. 9

SHEET 9 OF 9

NOTES CHENEY

H.C. RIPPLE

R.C. GEYMAN

DATE 7-15-1993

WEATHER FAIR

TEMP. 75°

ROUTE # 523

COUNTY SANDUSKY

TOWNSHIP RICE

SECTION 25 & 36

T. 6 N R. 15 E

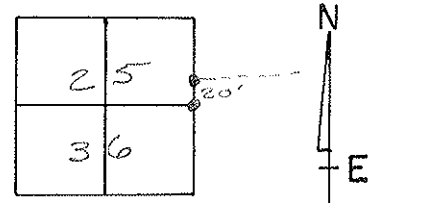
TYPE MONUMENT PK/WASHER

~~ON~~ SURFACE - BELOW 3.5"

~~LEFT~~ - CL PAV'T. - RIGHT 1'

8' TO RT EDGE PAVEMENT

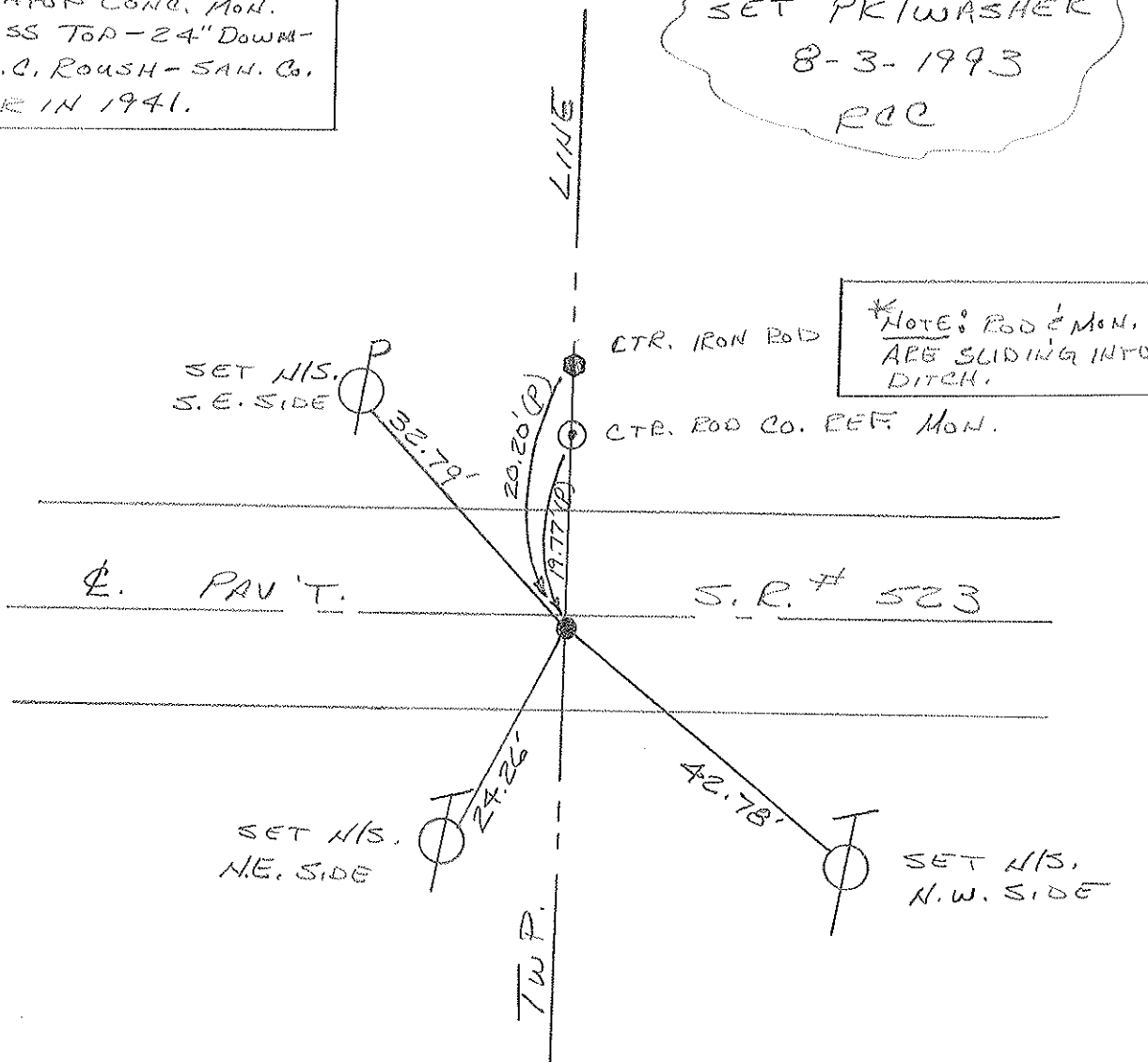
S.L.M. 186+08



RECORD: 11-17-1986

PK/WASHER ATOP 1" x 16"
GALV. ROD ATOP CONC. MON.
WITH BRASS TOP - 24" DOWN -
SET BY L.C. ROUSH - SAN. CO.
ENGINEER IN 1941.

SET PK/WASHER
8-3-1993
RCC



O.D.O.T. DISTRICT 2 SURVEY OFFICE

PERSONNEL

REFERENCE NO. 9

SHEET 9 OF 9

NOTES Cronin

H.C. Ripple

R.C. Coyman

Barbour

DATE 11/17/36

WEATHER sunny-windy

TEMP. 45°

ROUTE # 523

COUNTY Sandusky

TOWNSHIP Rice

SECTION 25 36

T. 6 N R. 15 E

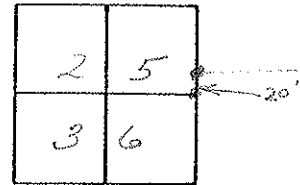
TYPE MONUMENT P.K. & washer

ON SURFACE - BELOW 3 1/2" below surface

LEFT - ☉ PAV'T. - RIGHT 1/2" & Pav't.

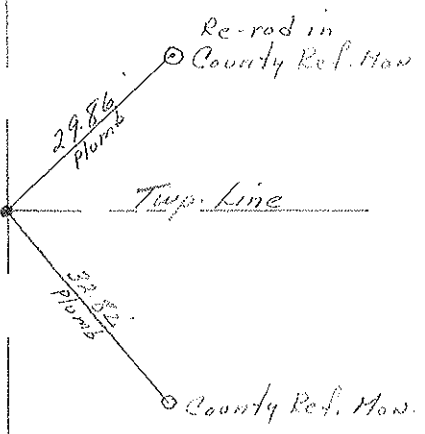
TO _____ EDGE PAVEMENT

S.L.M. _____



P.K. & washer at top 1"
x 1/2" galvanized rod at top
cons. Mon with brass top
24" below surface set by
L.C. Roush Co. Eng. in 1941

These points are slipping
into ditch
I Pod (County Ref. Mon)
1969 P.
20.12 P



25 36
Rice
Sandusky

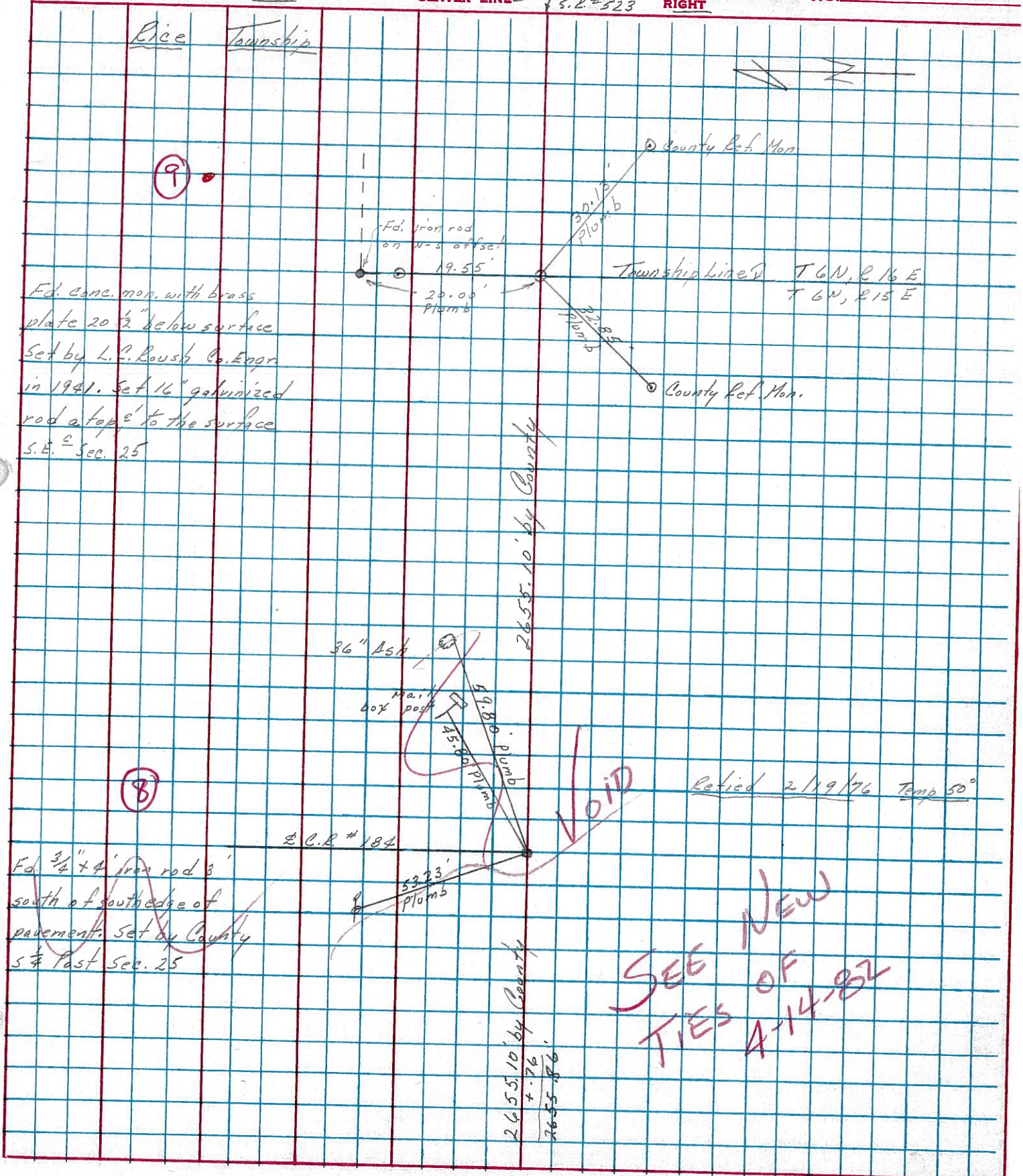
PERSONNEL	TITLE	PERSONNEL	TITLE
Cronin			
Ripple			
Geyman			

SHEET NO. 4
 Drawn 3/4/76
 DATE 2/20/76

COUNTY Sandusky
 S. R. # 523
 SEC. S.R. #19 to S.R. #53
 WEATHER sunny
 TEMP. 60°

DESCRIPTION Ties for Control Points

LEFT CENTER LINE RIGHT JOB NO.



PERSONNEL TITLE PERSONNEL TITLE

SHEET NO. 4
 Drawn 3/4/76
 DATE 2/20/76

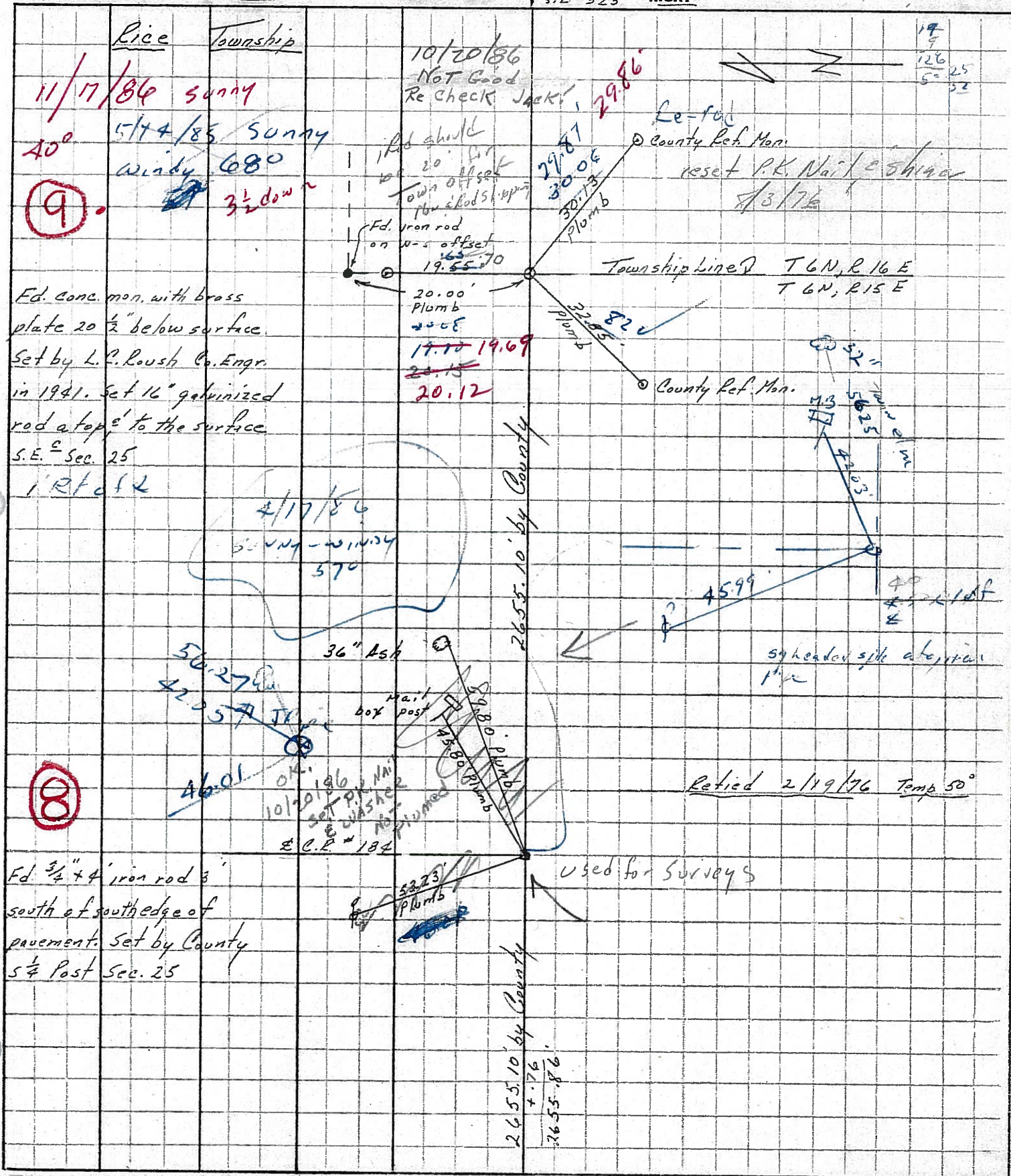
Cronin
Ripple
Geyman

COUNTY Sandusky
 S. R. = 523 WEATHER sunny
 SEC. S.E. #19 to S.E. #53 TEMP. 60°

DESCRIPTION Ties for Control Points

JOB NO.

LEFT CENTER LINE RIGHT



PERSONNEL TITLE PERSONNEL TITLE

Schneider

Barbour

Potts

COUNTY Sandusky

DATE 1-25-68

S. R. 523

WEATHER Windy - Cold

SEC. S.R. #19 & S.R. #53

TEMP. 30°

DESCRIPTION

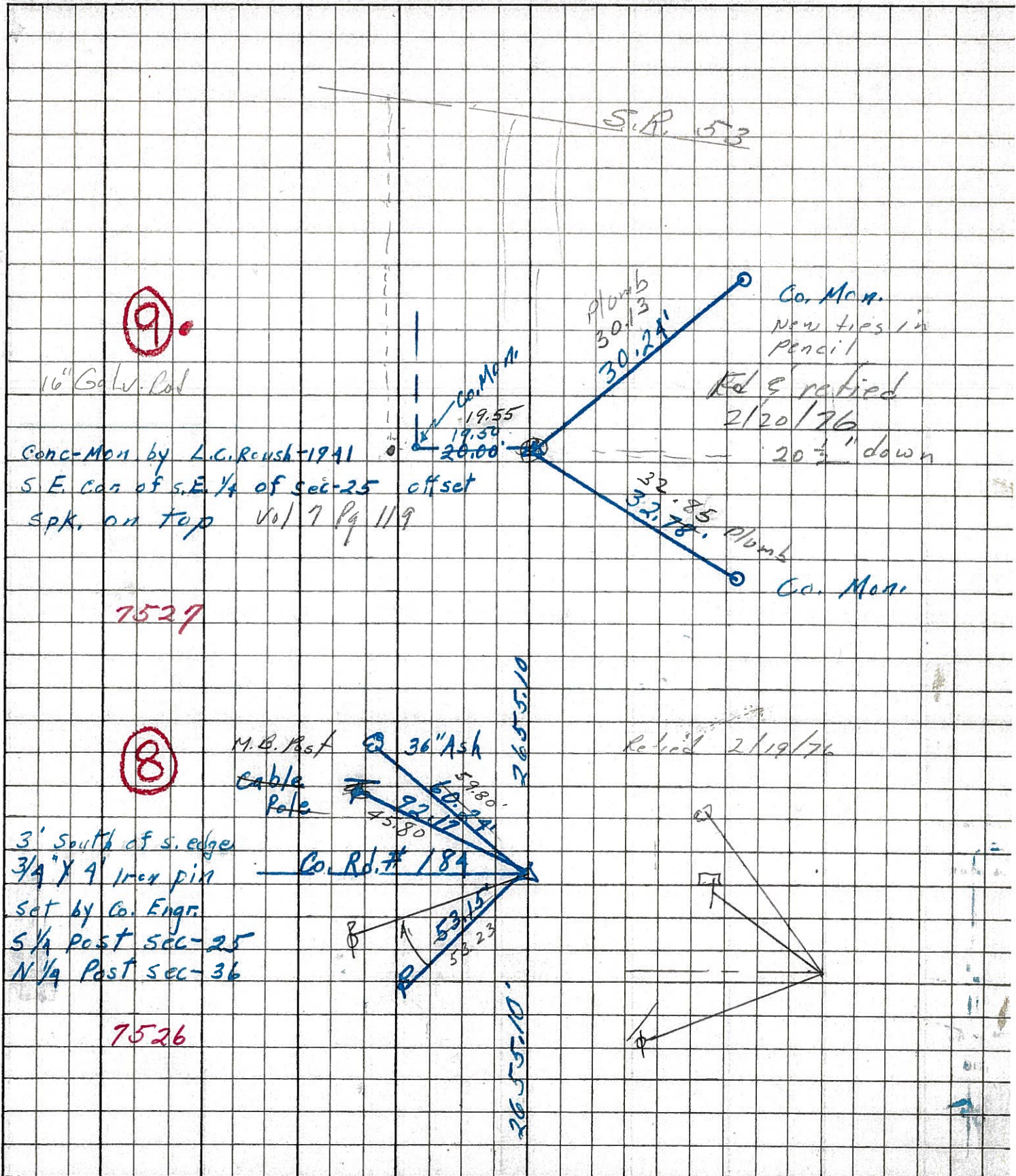
Ties for Control Points

JOB NO.

LEFT

CENTER LINE

RIGHT



7527

7526

PERSONNEL TITLE PERSONNEL TITLE

Schneider

COUNTY Sandusky

DATE 4-25-68

Barbour

S. R. 523

WEATHER Windy - Cold

Potts

SEC. S.R. #19 to S.R. #53

TEMP. 30°

DESCRIPTION

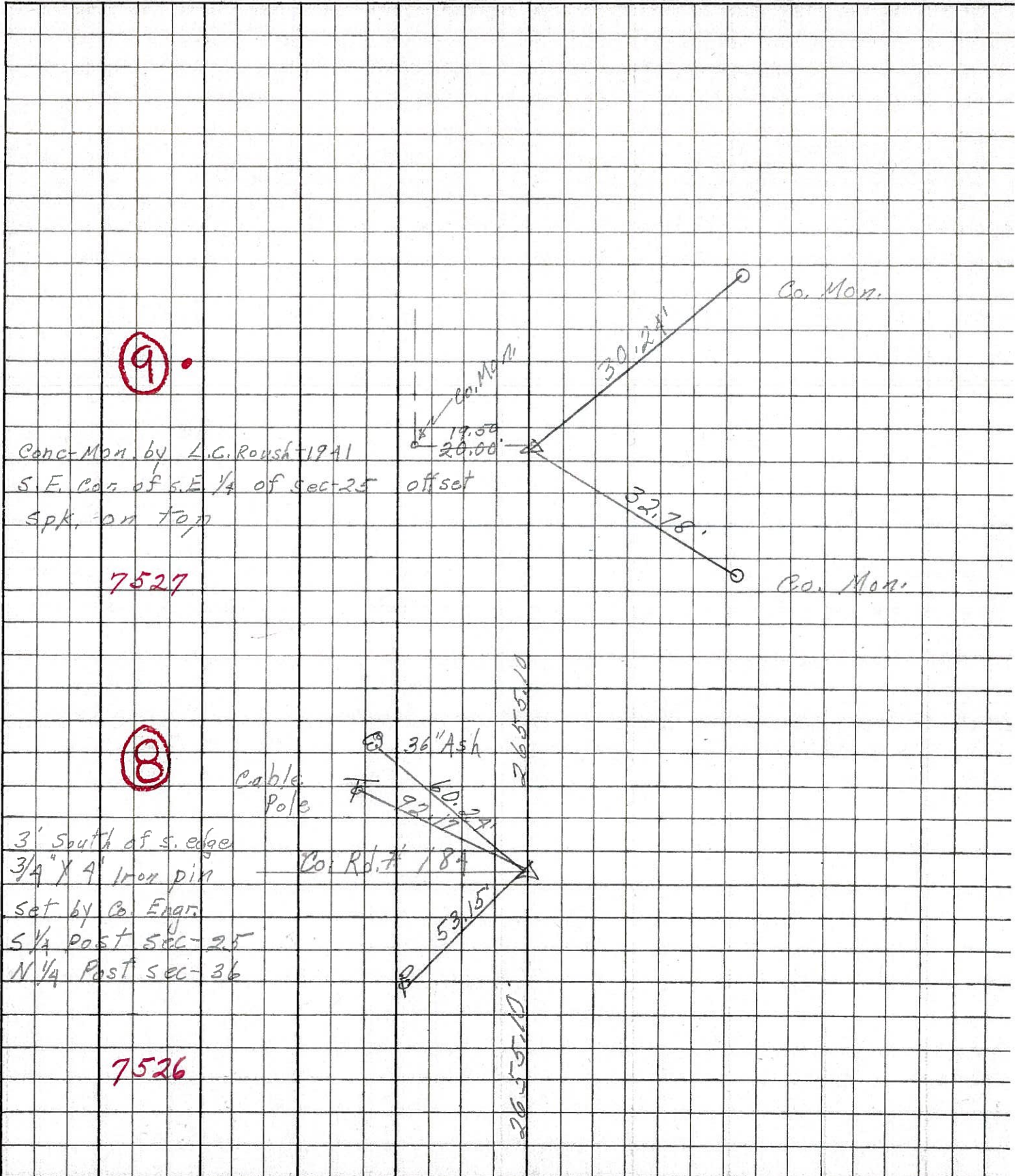
Ties for Control Points

JOB NO.

LEFT

CENTER LINE

RIGHT



PERSONNEL TITLE PERSONNEL TITLE

COUNTY Sandusky DATE Nov. 19, 1963

Swarden
Bowers
Jamison

S. R. #523

WEATHER Clear

SEC. TEMP +50°

DESCRIPTION Control Points

JOB NO.

