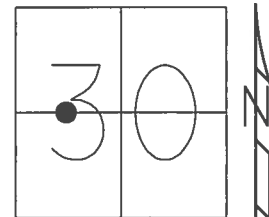


O.D.O.T. DISTRICT 2 SURVEY OFFICE (USE ONLY)

PERSONNEL _____ REFERENCE NO. 2 SHEET 1 OF 5

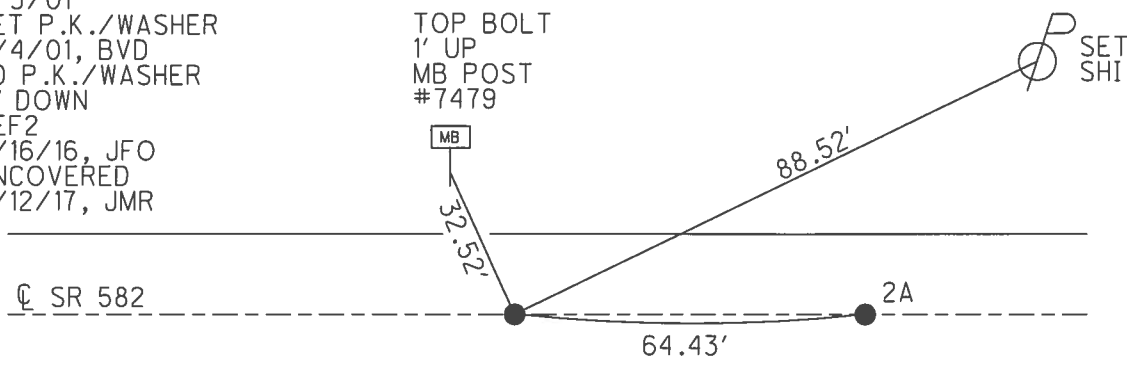
NOTES RHOADES DATE 6/17/16 ROUTE SR 582
 H.C. KEFFER WEATHER CLEAR COUNTY SANDUSKY
 R.C. RHOADES TEMP. 68° TOWNSHIP WOODVILLE
 _____ SECTION 30
 _____ T 6 N R 13 E

TYPE MONUMENT P.K./WASHER
 ON SURFACE - ~~BELOW~~ 4"
 LEFT - ☉ PAV'T - ~~RIGHT~~ 1.0'
9.3' TO LT EDGE PAVEMENT
 S.L.M. 11+75



GRID: NORTHING: 650740.954 EASTING: 1718784.841

RECORD: 12/14/81
 FD 12x10x8" RED & BLACK
 GRANITE STONE 7" BELOW
 FD P.K./WASHER ATOP
 R.R.SPIKE ATOP
 STONE
 FD P.K./WASHER
 6/3/01
 SET P.K./WASHER
 9/4/01, BVD
 FD P.K./WASHER
 4" DOWN
 REF2
 6/16/16, JFO
 UNCOVERED
 9/12/17, JMR



O.D.O.T. DISTRICT 2 SURVEY OFFICE (USE ONLY)

PERSONNEL _____ REFERENCE NO. 2 A SHEET 2 OF 5

NOTES RHOADES DATE 6/17/16 ROUTE SR 582
H.C. KEFFER WEATHER CLEAR COUNTY SANDUSKY
R.C. RHOADES TEMP. 68° TOWNSHIP WOODVILLE
SECTION 30
T 6 N R 13 E

TYPE MONUMENT P.K.NAIL

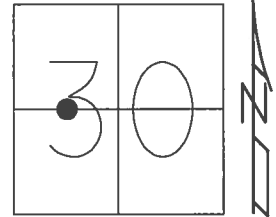
ON SURFACE - ~~BELOW~~ ON _____

LEFT - ☉ PAV'T - ~~RIGHT~~ 1.0'

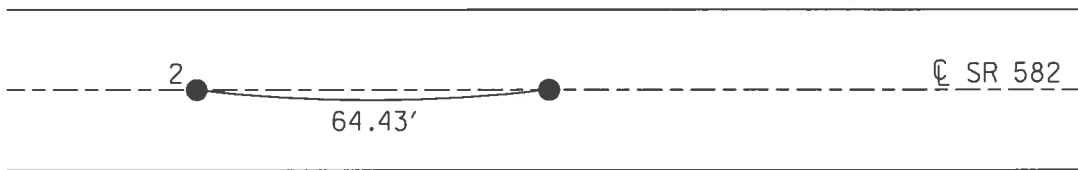
9.3' TO LT EDGE PAVEMENT

S.L.M. 12+46

GRID: NORTHING: 650740.395 EASTING: 1718849.330



RECORD:
FD P.K. NAIL
REFA2
6/16/16, JFO
UNKNOWN ORIGIN
UNCOVERED
9/12/17, JMR

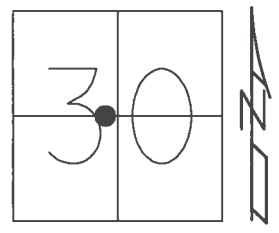


O.D.O.T. DISTRICT 2 SURVEY OFFICE (USE ONLY)

PERSONNEL _____ REFERENCE NO. 3 SHEET 3 OF 5

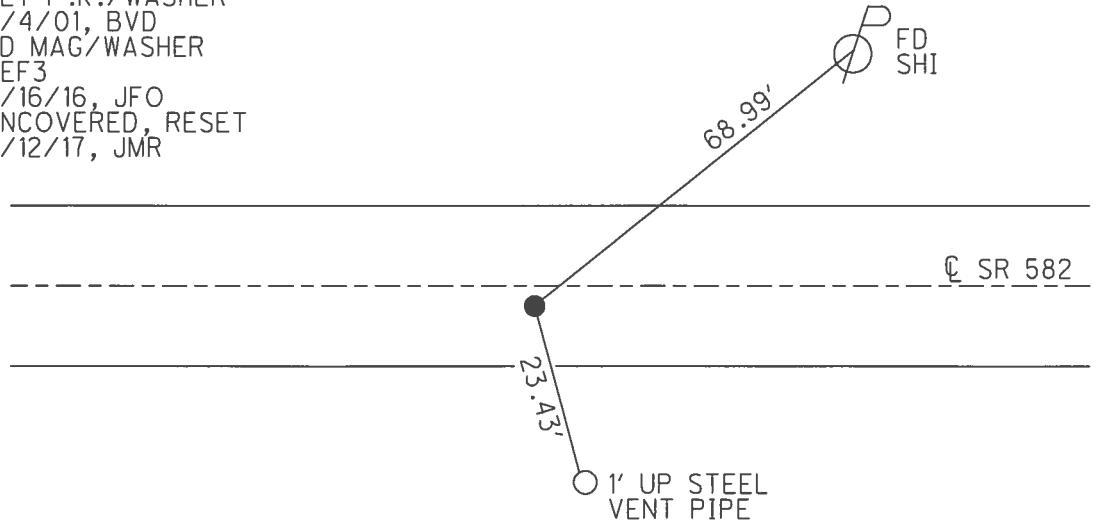
NOTES RHOADES DATE 6/17/16 ROUTE SR 582
 H.C. KEFFER WEATHER CLEAR COUNTY SANDUSKY
 R.C. RHOADES TEMP. 68° TOWNSHIP WOODVILLE
 _____ SECTION 30
 _____ T 6 N R 13 E

TYPE MONUMENT MAG/WASHER
 ON SURFACE - ~~BELOW~~ ON
~~LEFT~~ - CL PAV'T - RIGHT 3.0'
7.1' TO RT EDGE PAVEMENT
 S.L.M. 23+61



GRID: NORTHING: 650730.347 EASTING: 1719966.665

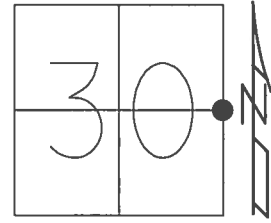
RECORD: 12/16/81
 FD 12x12x14" RED & BLACK
 GRANITE STONE 13" BELOW
 FD P.K./WASHER ATOP
 R.R.SPIKE ATOP
 STONE
 FD P.K./WASHER
 6/3/01
 SET P.K./WASHER
 9/4/01, BVD
 FD MAG/WASHER
 REF3
 6/16/16, JFO
 UNCOVERED, RESET
 9/12/17, JMR



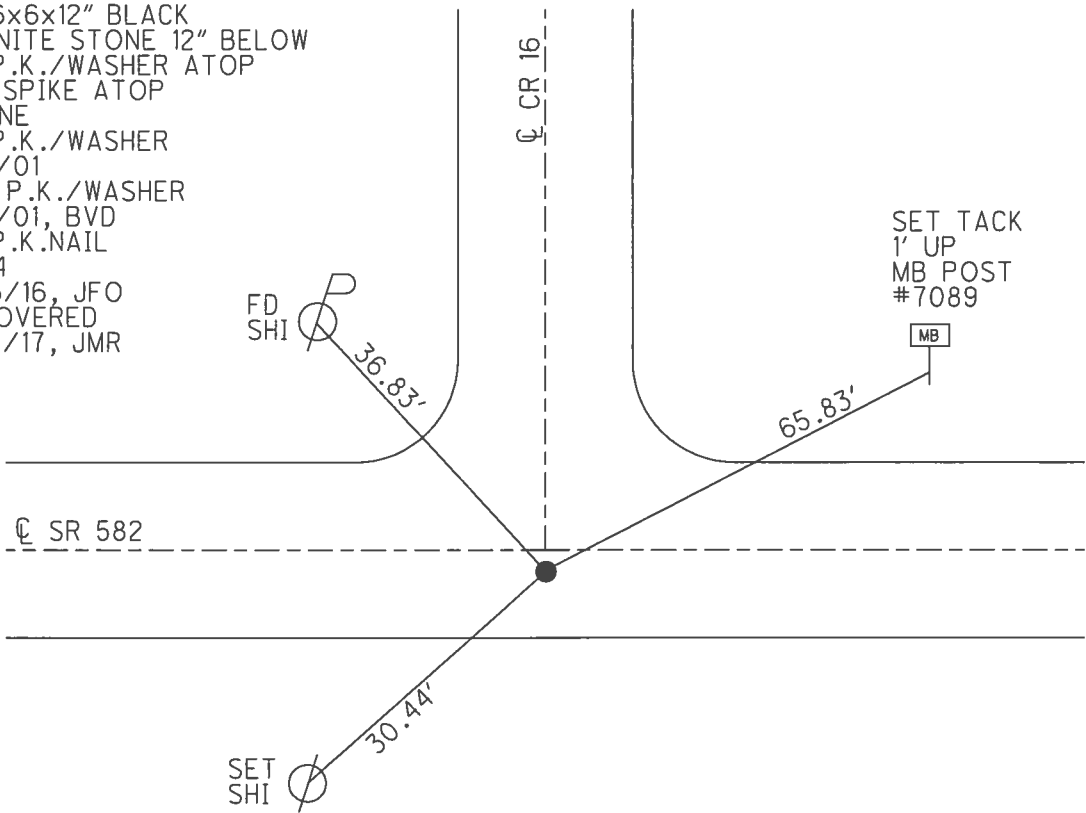
O.D.O.T. DISTRICT 2 SURVEY OFFICE (USE ONLY)

PERSONNEL _____ REFERENCE NO. 4 SHEET 4 OF 5
 NOTES RHOADES DATE 6/17/16 ROUTE SR 582
 H.C. KEFFER WEATHER CLEAR COUNTY SANDUSKY
 R.C. RHOADES TEMP. 68° TOWNSHIP WOODVILLE
 _____ SECTION 30
 _____ T 6 N R 13 E

TYPE MONUMENT P.K.NAIL
 ON SURFACE - ~~BELOW~~ ON
~~LEFT~~ - Q PAV'T - RIGHT 2.5'
6.7' TO RT EDGE PAVEMENT
 S.L.M. 50+27
 GRID: NORTHING: 650706.405 EASTING: 1722627.588



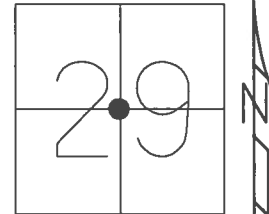
RECORD: 10/20/81
 FD 6x6x12" BLACK
 GRANITE STONE 12" BELOW
 FD P.K./WASHER ATOP
 R.R.SPIKE ATOP
 STONE
 FD P.K./WASHER
 6/3/01
 SET P.K./WASHER
 9/4/01, BVD
 FD P.K.NAIL
 REF4
 6/16/16, JFO
 UNCOVERED
 9/12/17, JMR



O.D.O.T. DISTRICT 2 SURVEY OFFICE (USE ONLY)

PERSONNEL _____ REFERENCE NO. 6 SHEET 5 OF 5
 NOTES RHOADES DATE 6/17/16 ROUTE SR 582
 H.C. KEFFER WEATHER CLEAR COUNTY SANDUSKY
 R.C. RHOADES TEMP. 68° TOWNSHIP WOODVILLE
 _____ SECTION 29
 _____ T 6 N R 13 E

TYPE MONUMENT P.K.NAIL
 ON SURFACE - ~~BELOW~~ ON _____
 LEFT - ☉ PAV'T - RIGHT ON _____
12.3' TO RT EDGE PAVEMENT
 S.L.M. 77+38



GRID: NORTHING: 650814.581 EASTING: 1725331.276

RECORD: 11/23/81
 FD 11x7x4" LIMESTONE
 W/DRILLHOLE 17" BELOW
 FD P.K./WASHER ATOP
 R.R.SPIKE ATOP
 STONE
 FD P.K./WASHER
 6/3/01
 SET P.K.NAIL
 9/4/01, BVD
 FD P.K.NAIL
 REF6
 6/16/16, JFO
 SET MAG/WASHER
 2" DOWN
 NEWREF6
 9/19/17, JFO

