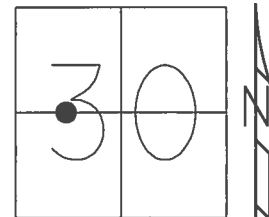


O.D.O.T. DISTRICT 2 SURVEY OFFICE (USE ONLY)

PERSONNEL _____ REFERENCE NO. 2 SHEET 1 OF 5

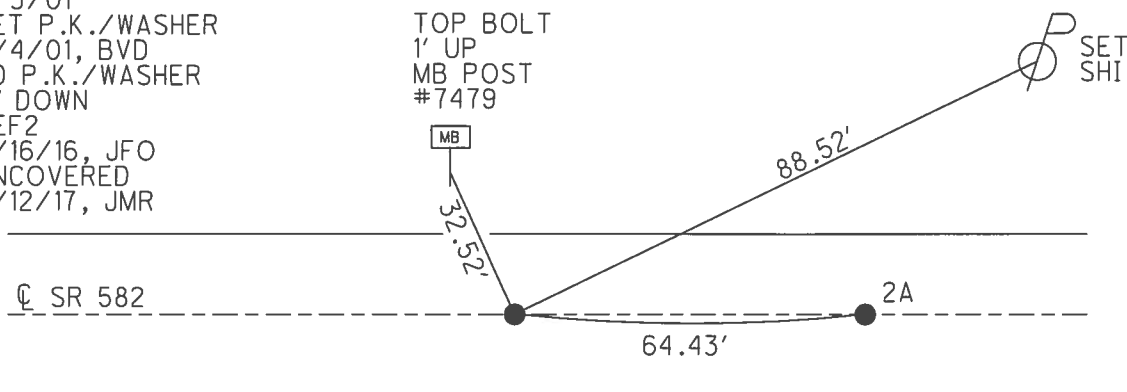
NOTES RHOADES DATE 6/17/16 ROUTE SR 582
 H.C. KEFFER WEATHER CLEAR COUNTY SANDUSKY
 R.C. RHOADES TEMP. 68° TOWNSHIP WOODVILLE
 _____ SECTION 30
 _____ T 6 N R 13 E

TYPE MONUMENT P.K./WASHER
 ON SURFACE - ~~BELOW~~ 4"
 LEFT - ☉ PAV'T - ~~RIGHT~~ 1.0'
9.3' TO LT EDGE PAVEMENT
 S.L.M. 11+75



GRID: NORTHING: 650740.954 EASTING: 1718784.841

RECORD: 12/14/81
 FD 12x10x8" RED & BLACK
 GRANITE STONE 7" BELOW
 FD P.K./WASHER ATOP
 R.R.SPIKE ATOP
 STONE
 FD P.K./WASHER
 6/3/01
 SET P.K./WASHER
 9/4/01, BVD
 FD P.K./WASHER
 4" DOWN
 REF2
 6/16/16, JFO
 UNCOVERED
 9/12/17, JMR



O.D.O.T. DISTRICT 2 SURVEY OFFICE

PERSONNEL

REFERENCE NO. 2

SHEET 1 OF 4

NOTES VAN DUSEN

H.C. ROUSOS

DATE 6-3-01

ROUTE 582

R.C. A. BROWN

WEATHER FAIR

COUNTY JANDUSKY

TEMP. +60°F

TOWNSHIP WOODVILLE

SECTION 30

T6 N R 13 E

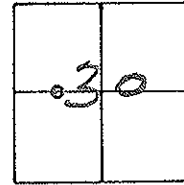
TYPE MONUMENT PK& WASHER

ON SURFACE - BELOW YES

LEFT- & PAV'T. - RIGHT 1.0'

2.3 TOLT. EDGE PAVEMENT

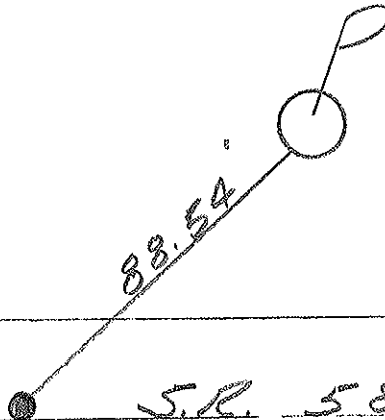
S.L.M. 11+75



REC:

FD. 12" x 10" x 8" RED & BLACK
 GRANITE STONE 7" BELOW
 SURFACE 12-14-81 - PK &
 WASHER ATOP RR. SPK.
 ATOP STONE

& PAVEMENT



SET PK& WASHER
 9-4-01
 BVD

Resurfaed 2001

O.D.O.T. DISTRICT 2 SURVEY OFFICE

PERSONNEL

REFERENCE NO. 2

SHEET 2 OF 5

NOTES Cronin

H.C. Ripple

R.C. Geymen

DATE 9/11/87

WEATHER overcast

TEMP. 71°

ROUTE #582

COUNTY Sandusky

TOWNSHIP Woodville

SECTION 30

T 6 N R 13 E

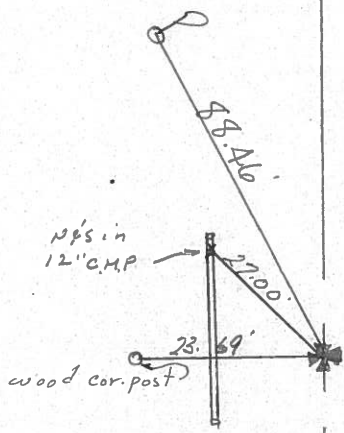
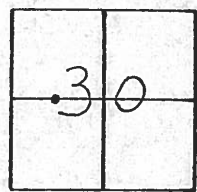
TYPE MONUMENT P.K. & Washer

ON SURFACE - BELOW on surface

LEFT - € PAV'T. - RIGHT 1 ± Lt. & Post

TO EDGE PAVEMENT

S.L.M. 11+75±



Fd. 12"x10"x8" Red & Black
Granite stone 7" below
surface 12/14/81 - P.K. &
washer atop P.R. spike
atop stone.

R. S.R. # 582

County Sandusky S.R. #582

Date 7/1/82

Township Woodville

Weather sunny

Section 30

Temp. 59°

T6N, R13E

Personnel Cronin

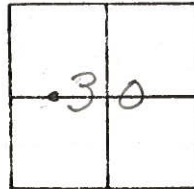
Ripple

Geyman

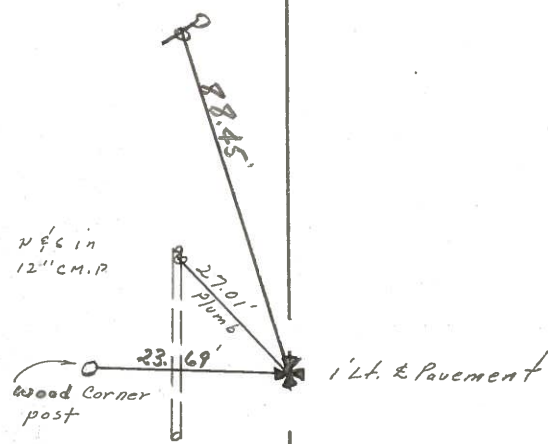
Mosser

Barbour

#2



S.E. 1/4; E. 1/2; N.W. 1/4 Section #30
Ed. 12"x10"x8" Red & Black
granite stone 7" below surface
12/14/81. Set R.R. spike at top. Set
P.K. & washer at top after resurfacing
in June, 1982

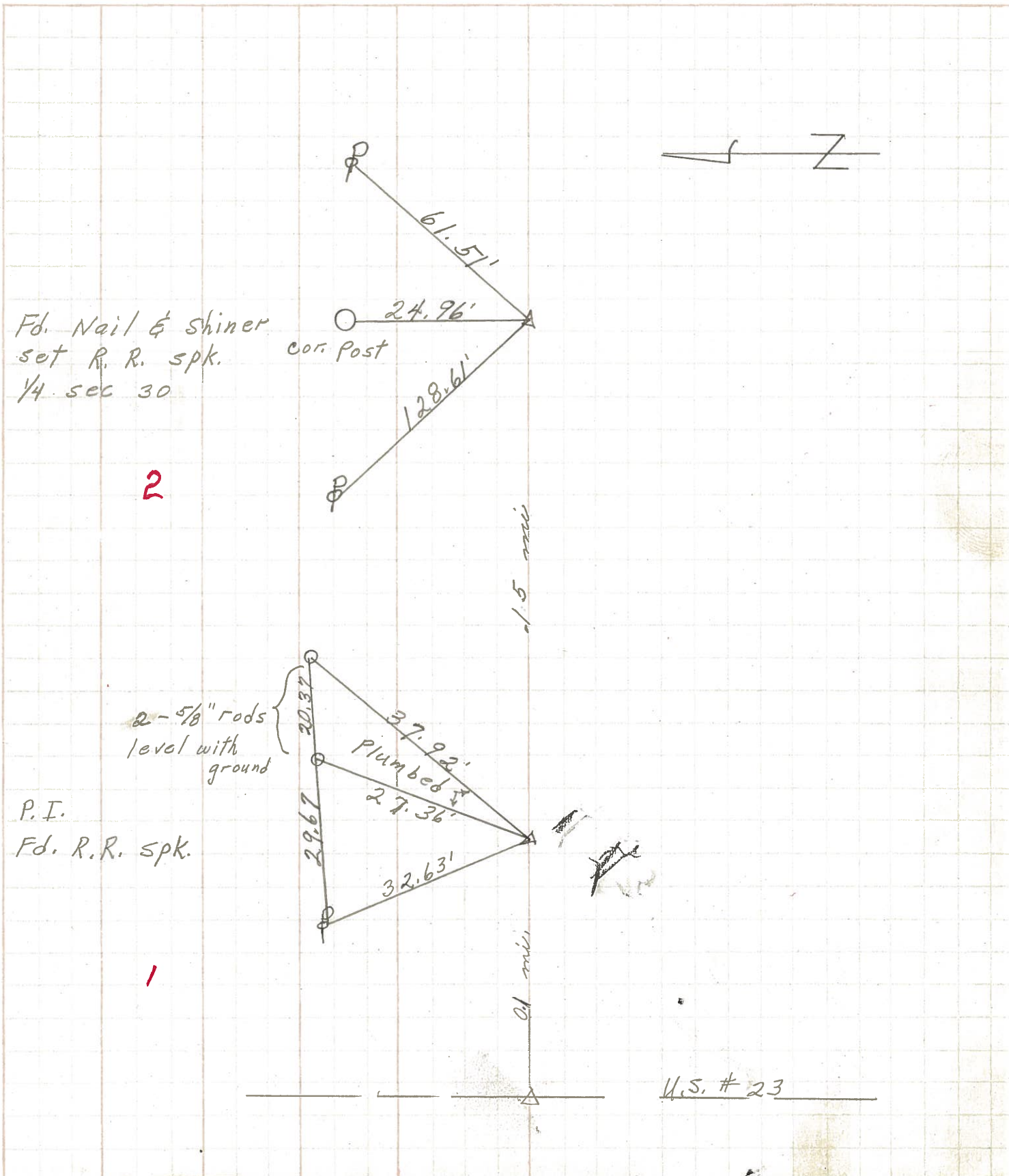


E. Plw S.R. #582

PERSONNEL	TITLE	PERSONNEL	TITLE	COUNTY	DATE	S. R.	WEATHER	TEMP.
Schneider				Sandusky	2-18-72	582	cloudy	40°
Mosser								
Barbour								
Vinson								

DESCRIPTION Woodville Twp. JOB NO. _____

LEFT CENTER LINE RIGHT



Fd. Nail & Shiner
set R. R. spk.
1/4 sec 30

cor. Post

2-5/8" rods
level with
ground

P.I.
Fd. R.R. spk.

U.S. # 23

20.95
29.07