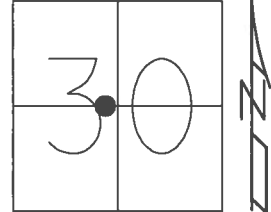


O.D.O.T. DISTRICT 2 SURVEY OFFICE (USE ONLY)

PERSONNEL \_\_\_\_\_ REFERENCE NO. 3 SHEET 3 OF 5

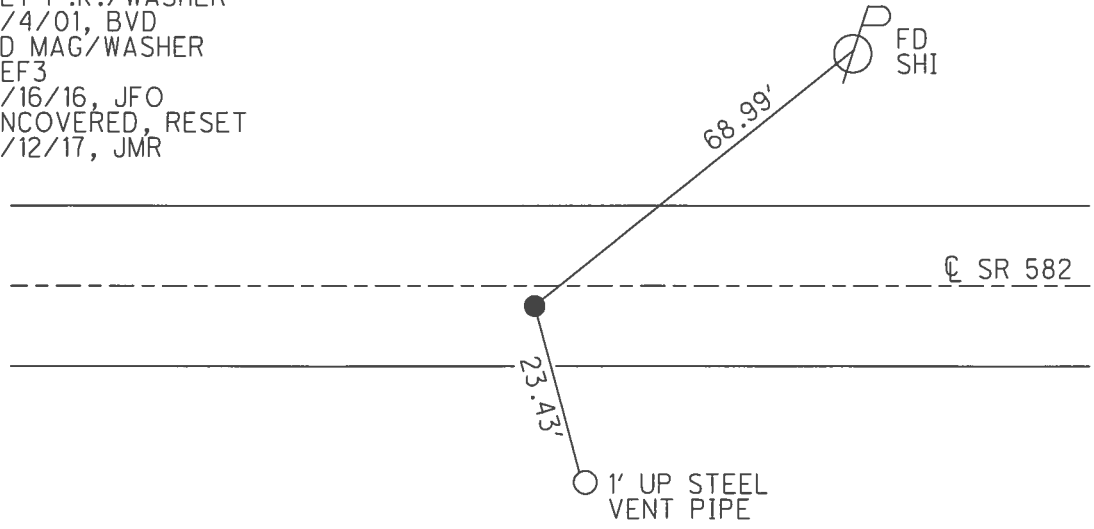
NOTES RHOADES DATE 6/17/16 ROUTE SR 582  
 H.C. KEFFER WEATHER CLEAR COUNTY SANDUSKY  
 R.C. RHOADES TEMP. 68° TOWNSHIP WOODVILLE  
 \_\_\_\_\_ SECTION 30  
 \_\_\_\_\_ T 6 N R 13 E

TYPE MONUMENT MAG/WASHER  
 ON SURFACE - ~~BELOW~~ ON  
~~LEFT~~ - CL PAV'T - RIGHT 3.0'  
7.1' TO RT EDGE PAVEMENT  
 S.L.M. 23+61



GRID: NORTHING: 650730.347 EASTING: 1719966.665

RECORD: 12/16/81  
 FD 12x12x14" RED & BLACK  
 GRANITE STONE 13" BELOW  
 FD P.K./WASHER ATOP  
 R.R.SPIKE ATOP  
 STONE  
 FD P.K./WASHER  
 6/3/01  
 SET P.K./WASHER  
 9/4/01, BVD  
 FD MAG/WASHER  
 REF3  
 6/16/16, JFO  
 UNCOVERED, RESET  
 9/12/17, JMR



O.D.O.T. DISTRICT 2 SURVEY OFFICE

PERSONNEL

REFERENCE NO. 3

SHEET 2 OF 4

NOTES VAN DUSEN

H.C. Rousos

R.C. A. BROWN

DATE 6-3-01

WEATHER FAIR

TEMP. +60°F

ROUTE 582

COUNTY Sandusky

TOWNSHIP Woodville

SECTION 30

T 6 N R 13 E

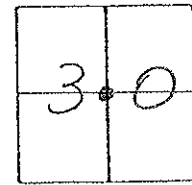
TYPE MONUMENT PK WASHER

ON SURFACE - ~~BELOW~~ YES

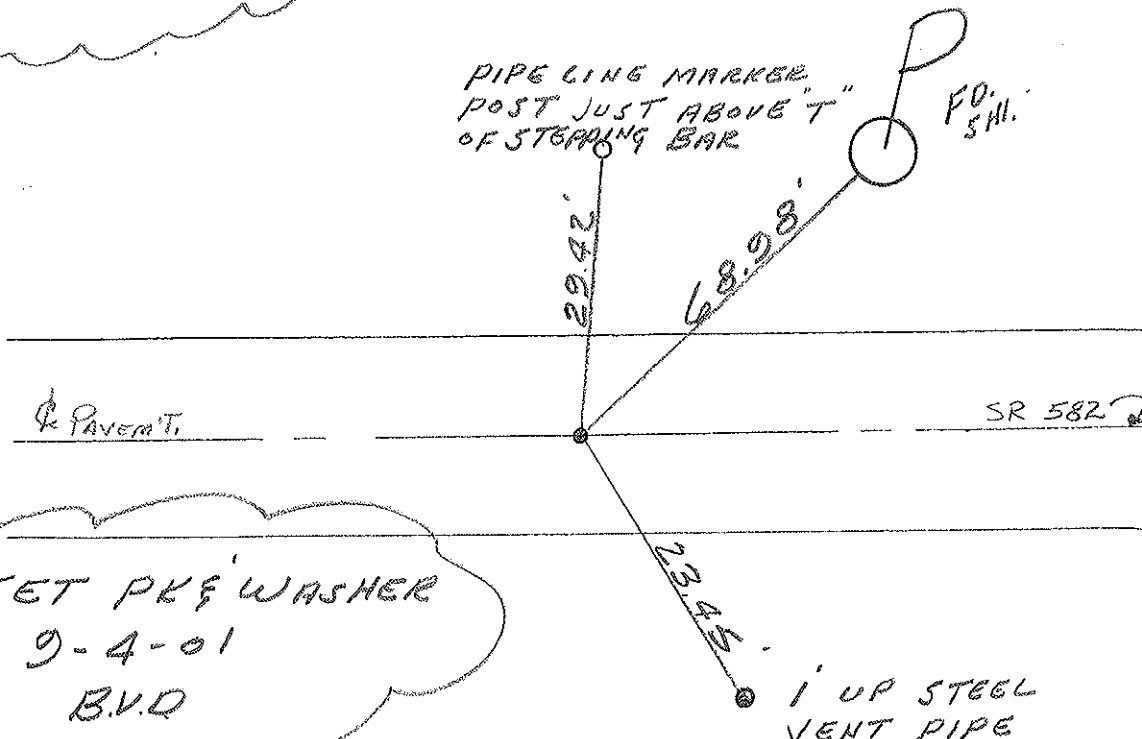
LEFT - CL PAV'T. - RIGHT 3.0'

2.1 TO RT. EDGE PAVEMENT

S.L.M. 23+61±



*REC!*  
 FIND 12"x12"x18" GREENISH  
 Black Granite Stone 13"  
 below Surface. 12/16/81  
 PK WASHER atop RR SPIKE  
 atop STONE



SET PK WASHER  
 9-4-01  
 B.V.D

O.D.O.T. DISTRICT 2 SURVEY OFFICE

PERSONNEL

REFERENCE NO. 3

SHEET 3 OF 5

NOTES Cronin

H.C. Ripple

R.C. Geyman

DATE 9/11/87

WEATHER overcast

TEMP. 71°

ROUTE 582

COUNTY Sandusky

TOWNSHIP Woodville

SECTION 30

T 6 N R 13 E

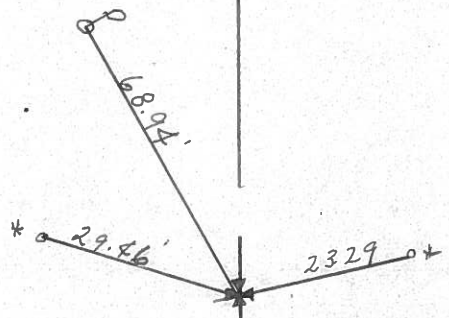
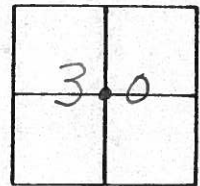
TYPE MONUMENT P.K. washer

ON SURFACE - BELOW on surface

LEFT - & PAV'T. - RIGHT 3' R.T. & Pav't.

TO EDGE PAVEMENT

S.L.M. 23+61 ±



Fd. 12" x 12" x 14" Greenish  
Black granite stone 13"  
below surface. 12/16/81  
P.K. washer atop R.R. spike  
atop stone

\* Pipe line marker post  
 just above T or stepping  
 bar.

R 582

County Sandusky S.R. #582

Township Woodville

Section 30

T6N, R13E

Personnel Cronin

Ripple

Geyman

Mosser

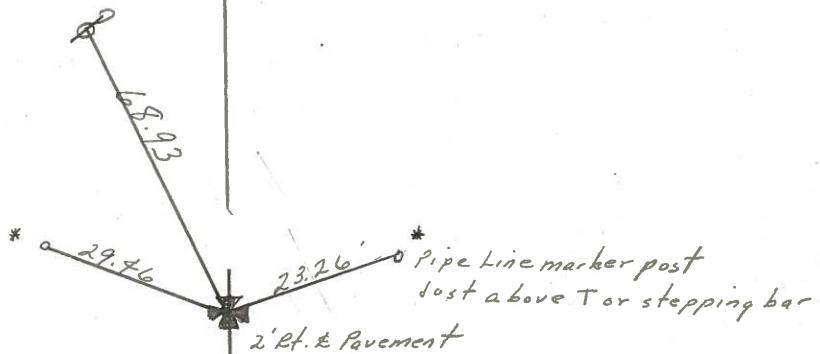
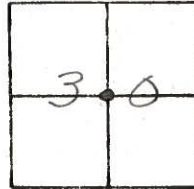
Barbour

#3

Date 7/1/82

Weather sunny

Temp. 59°



Ctr. of Section #30

Fd. 12" x 12" x 14" Greenish Black granite stone 13" below surface

12/16/81. Set R.R. spike at top. Set

P.K. & washer at top after resur-

facing in June, 1982

& R/W S.R. # 582

PERSONNEL TITLE PERSONNEL TITLE

COUNTY Sandusky DATE 2-18-72

S. R. 582 WEATHER cloudy-windy

SEC. 29-30 TEMP. 35°

DESCRIPTION Woodville Twp.

JOB NO.

LEFT

CENTER LINE

RIGHT

P.I.  
Fd. R.R. Spk.

S.R. #105

center sec 29  
6

did not find

1/4 mi.

P.I.  
1/4 sec 29  
5

did not find

1/4 mi.

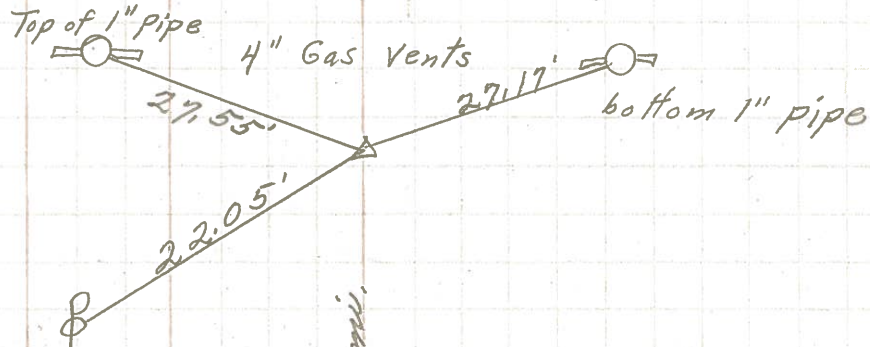
sec 29 & 30  
4

Twp. Rd. # 16  
North

did not find

1/2 mi.

Fd. Nail & shiner  
set R. R. spk.  
center sec 30



3

1/4 mi.