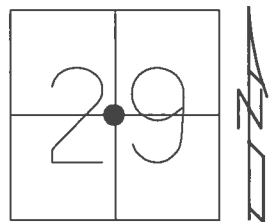


O.D.O.T. DISTRICT 2 SURVEY OFFICE (USE ONLY)

PERSONNEL _____ REFERENCE NO. 6 SHEET 5 OF 5

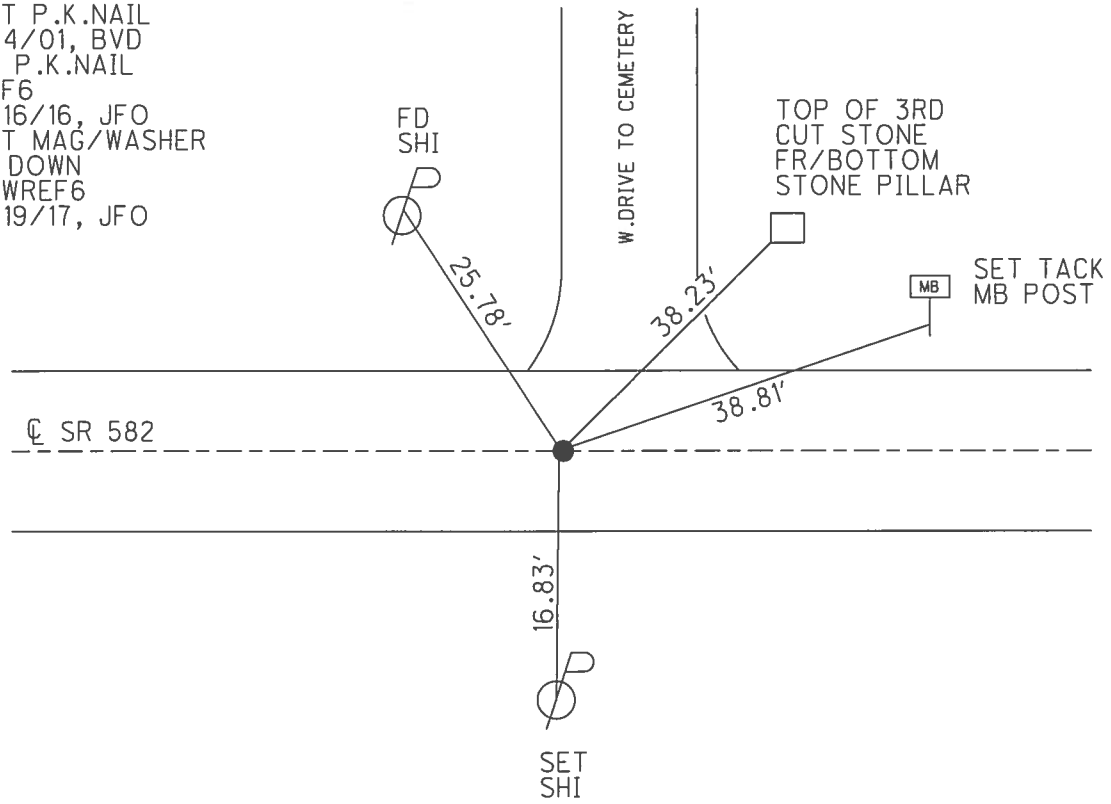
NOTES RHOADES DATE 6/17/16 ROUTE SR 582
 H.C. KEFFER WEATHER CLEAR COUNTY SANDUSKY
 R.C. RHOADES TEMP. 68° TOWNSHIP WOODVILLE
 _____ SECTION 29
 _____ T 6 N R 13 E

TYPE MONUMENT P.K.NAIL
 ON SURFACE - ~~BELOW~~ ON
 LEFT - CL PAV'T - RIGHT ON
12.3' TO RT EDGE PAVEMENT
 S.L.M. 77+38



GRID: NORTHING: 650814.581 EASTING: 1725331.276

RECORD: 11/23/81
 FD 11x7x4" LIMESTONE
 W/DRILLHOLE 17" BELOW
 FD P.K./WASHER ATOP
 R.R.SPIKE ATOP
 STONE
 FD P.K./WASHER
 6/3/01
 SET P.K.NAIL
 9/4/01, BVD
 FD P.K.NAIL
 REF6
 6/16/16, JFO
 SET MAG/WASHER
 2" DOWN
 NEWREF6
 9/19/17, JFO



O.D.O.T. DISTRICT 2 SURVEY OFFICE

PERSONNEL

REFERENCE NO. 6

SHEET 4 OF 4

NOTES VAN DUSEN

H.C. Rousos

R.C. A. BROWN

DATE 6-3-01

WEATHER FAIR

TEMP. +60°F

ROUTE 582

COUNTY Sandusky

TOWNSHIP Woodville

SECTION 29

T. 6 N. R. 13 E.

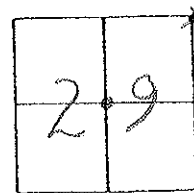
TYPE MONUMENT PK/WASHER

ON SURFACE - ~~BELOW~~ YES

~~LEFT -~~ PAV'T. - RIGHT YES

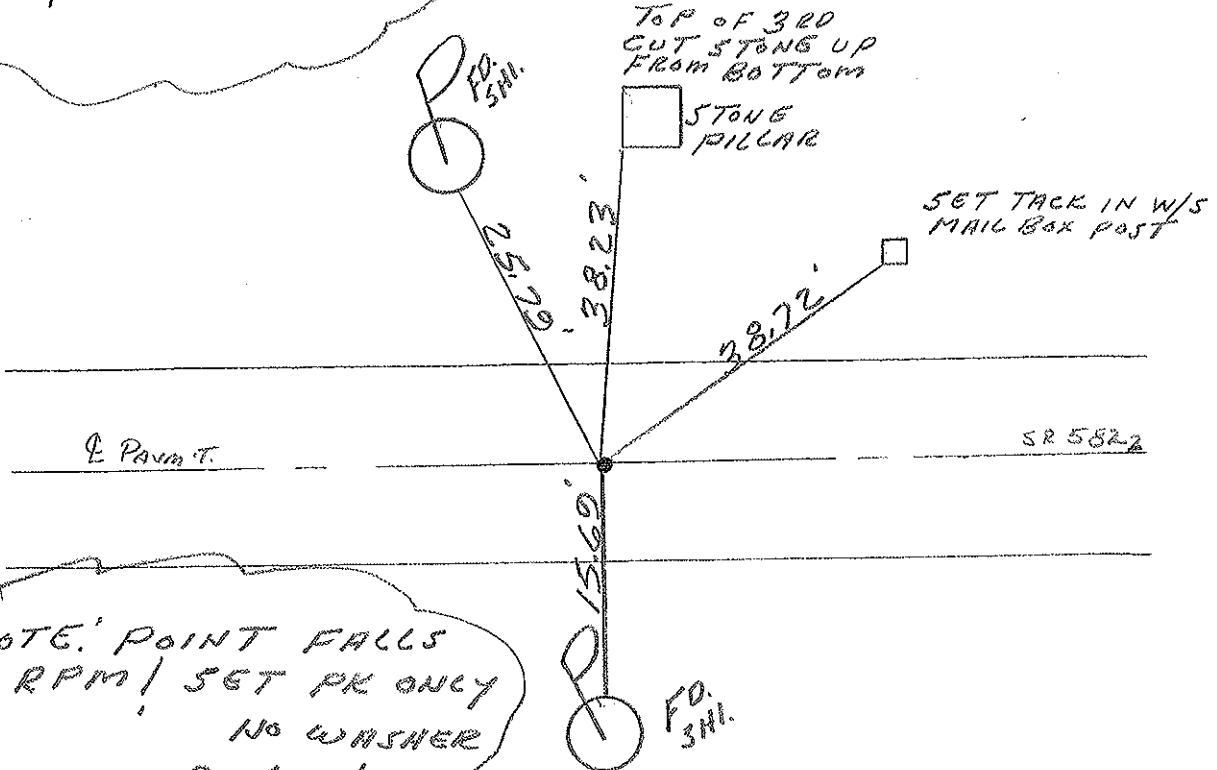
12.3 ~~JORT.~~ EDGE PAVEMENT

S.L.M. 77+38±



REC:

Find 11" x 7" x 4" limestone with drill hole 17" below surface. 11-23-81 PK/WASHER ATOP RR spike ATOP STONE



NOTE: POINT FALLS ON RPM / SET PK ONLY
NO WASHER
9-4-01
BUD

O.D.O.T. DISTRICT 2 SURVEY OFFICE

PERSONNEL

REFERENCE NO. 6

SHEET 5 OF 5

NOTES Cronin

H.C. Ripple

R.C. Geyman

DATE 9/11/87

WEATHER overcast

TEMP. 71°

ROUTE 582

COUNTY Sandusky

TOWNSHIP Woodville

SECTION 29

T 6 N R 13 E

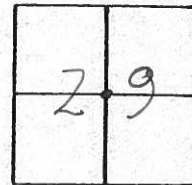
TYPE MONUMENT P.K. & washer

ON SURFACE - BELOW on surface

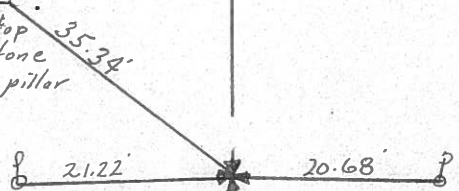
LEFT - € PAV'T. - RIGHT 4.5 ft. & Pav't.

TO EDGE PAVEMENT

S.L.M. 77+38±



face at top
3rd cut stone
of stone pillar



Fd. 11"x7"x4" Limestone
with drill hole 17" below
surface. 11/23/81. P.K. & washer
at top R.R. spike at top stone.

R. S.R. # 5827

County Sandusky S.R. # 582

Date 7/1/82

Township Woodville

Weather sunny

Section # 29

Temp. # 68°

T6N, R13E

Personnel Cronin

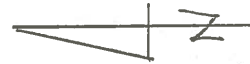
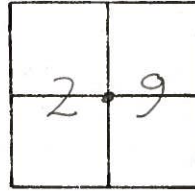
Ripple

Geyman

Mosser

Barbour

#6




 face at top of
 3rd cut stone of
 stone pillar



Center Section #29
Ed. 11" x 7" x 4" Limestone with
drill hole 17" below surface
11/23/81. Set R.R. spike atop.
Set P.K. washer atop after
resurfacing in June, 1982

S.R. # 582

PERSONNEL TITLE PERSONNEL TITLE

COUNTY Sandusky DATE 2-18-72

S. R. 582 WEATHER cloudy-windy

SEC. 29-30 TEMP. 35°

DESCRIPTION Woodville Twp. LEFT CENTER LINE RIGHT JOB NO.

P.I.
Fd. R.R. Spk.

S.R. #105

center sec 29

did not find

6

1/4 mi.

P.I.
1/4 sec 29

did not find

5

1/4 mi.

Twp. Rd. # 16
North

sec 29 & 30

did not find

4

1/2 mi.

Top of 1" pipe

4" Gas Vents

bottom 1" pipe

27.55'

27.17'

22.05'

Fd. Nail & shiner
set R. R. spk.
center sec 30

3

1/4 mi.