

O.D.O.T. DISTRICT 2 SURVEY OFFICE (USE ONLY)

PERSONNEL

REFERENCE NO. 0

SHEET 1 OF 33

NOTES TRENKA

DATE 6-11-18

ROUTE SR 590

H.C. RHOADES

WEATHER CLOUDY

COUNTY SANDUSKY

R.C. TRENKA

TEMP. 64°

TOWNSHIP JACKSON

SECTION 34

DWG BY AUBLE

PID 95765

T 4 N R 14 E

TYPE MONUMENT IPIN

~~ON SURFACE~~ - BELOW 2.5"

OFFSET  $\text{C}$  PAVEMENT 3.5' ~~LT~~ : RT

- TO - EDGE PAVEMENT

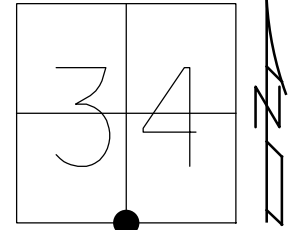
STATION: 0+00

HORZ.DATUM: NAD83(2011)

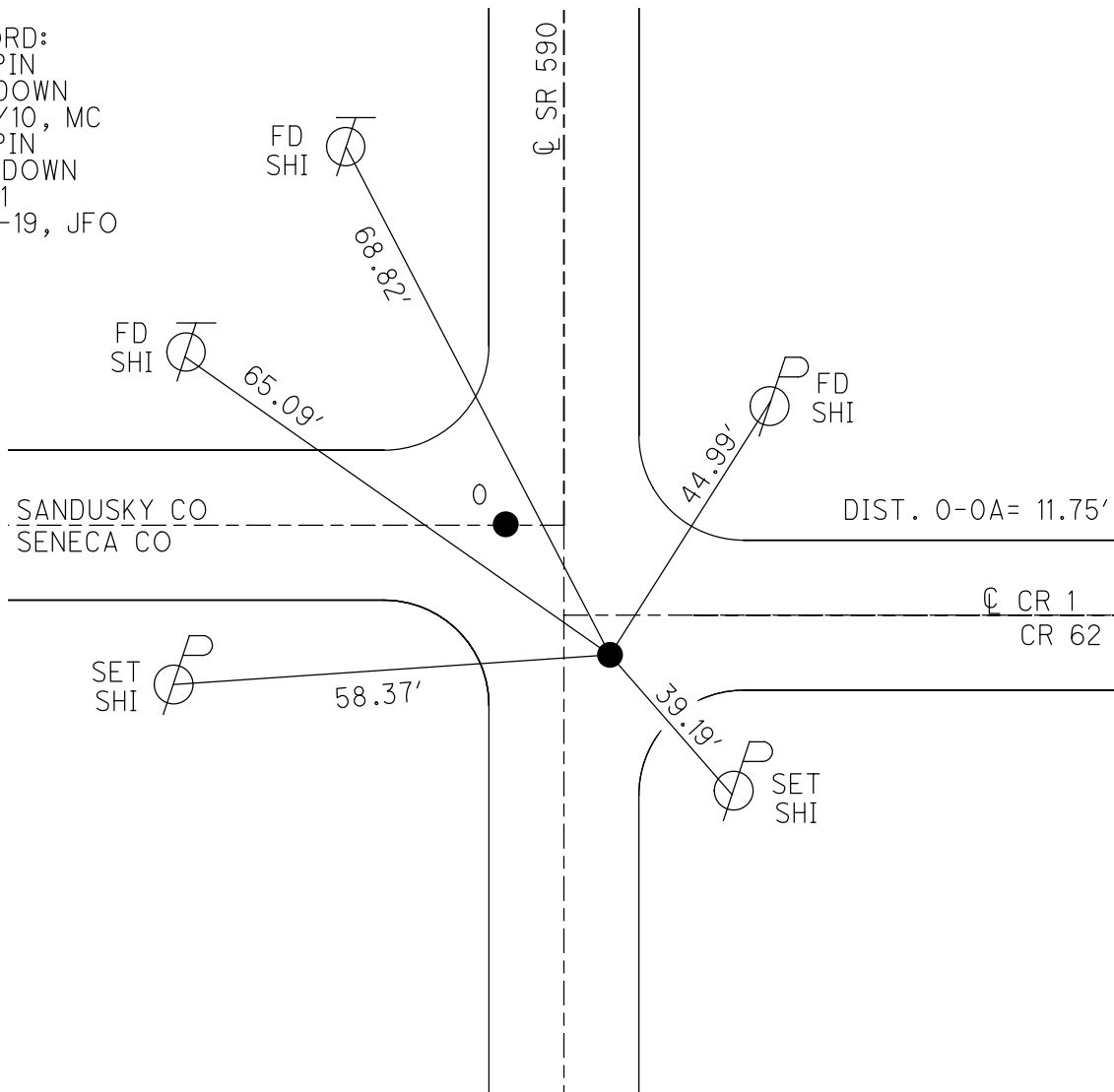
GEOID: 2012A

GRID: NORTHING: 578767.595

EASTING: 1766191.105



RECORD:  
 FD IPIN  
 0.2 DOWN  
 7/21/10, MC  
 FD IPIN  
 2.5" DOWN  
 REFA1  
 8-23-19, JFO

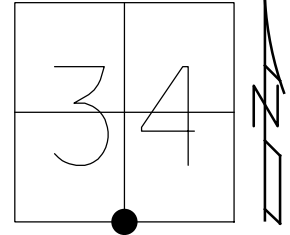


O.D.O.T. DISTRICT 2 SURVEY OFFICE (USE ONLY)

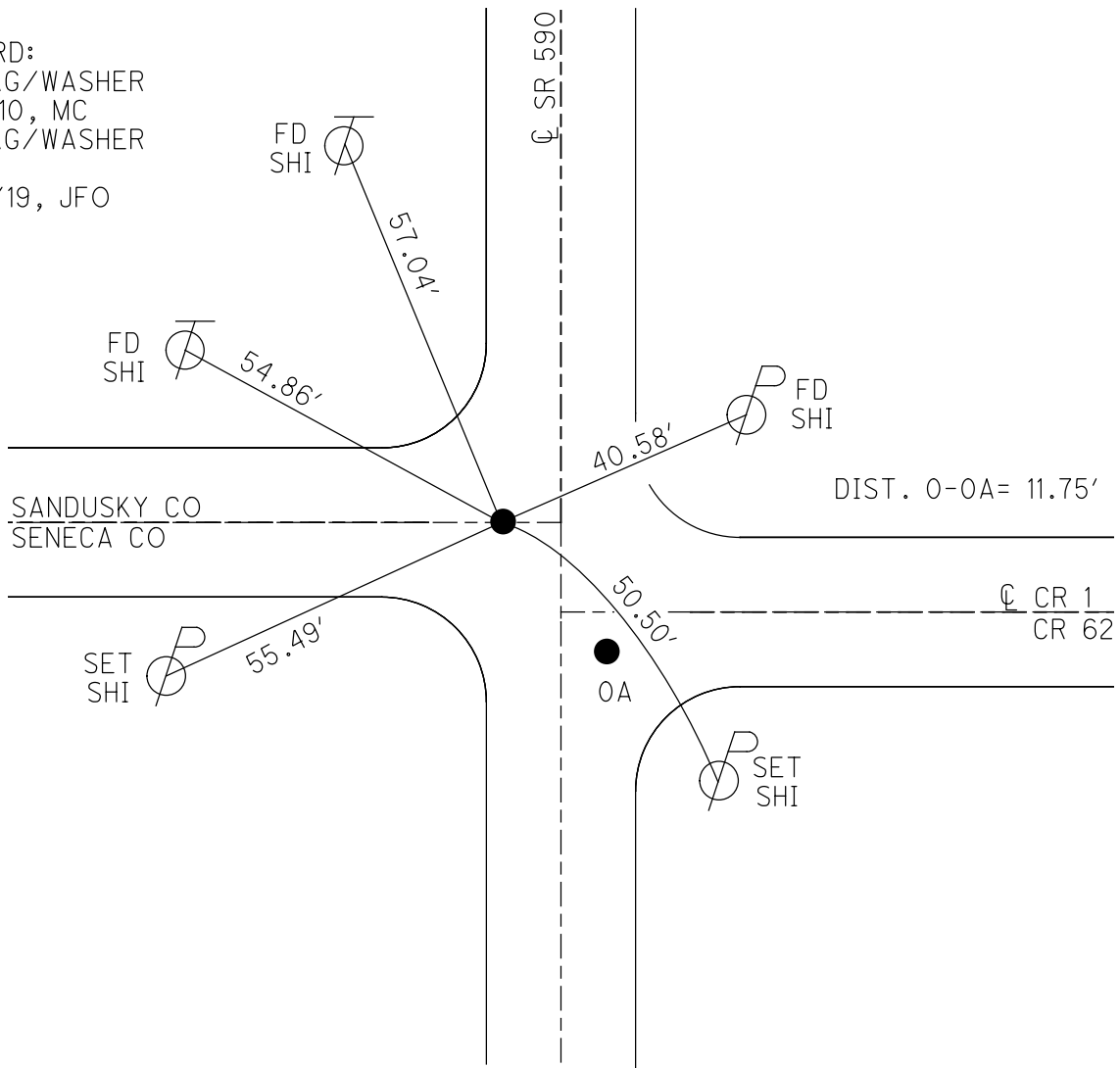
PERSONNEL \_\_\_\_\_ REFERENCE NO. 0 A SHEET 2 OF 33  
 NOTES TRENKA DATE 6-11-18 ROUTE SR 590  
 H.C. RHOADES WEATHER CLOUDY COUNTY SANDUSKY  
 R.C. TRENKA TEMP. 64° TOWNSHIP JACKSON  
 DWG BY AUBLE PID 95765 SECTION 34  
 T 4 N R 14 E

TYPE MONUMENT MAG/WASHER  
 ON SURFACE - ~~BELOW~~ ON  
 OFFSET  $\varnothing$  PAVEMENT 2.2' LT : ~~RT~~  
- TO - EDGE PAVEMENT  
 STATION: 0+00

HORZ. DATUM: NAD83(2011) GEOID: 2012A  
 GRID: NORTHING: 578778.038 EASTING: 1766185.616



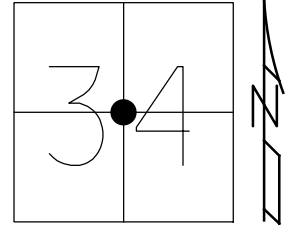
RECORD:  
 FD MAG/WASHER  
 7/21/10, MC  
 FD MAG/WASHER  
 REFB1  
 8/23/19, JFO



O.D.O.T. DISTRICT 2 SURVEY OFFICE (USE ONLY)

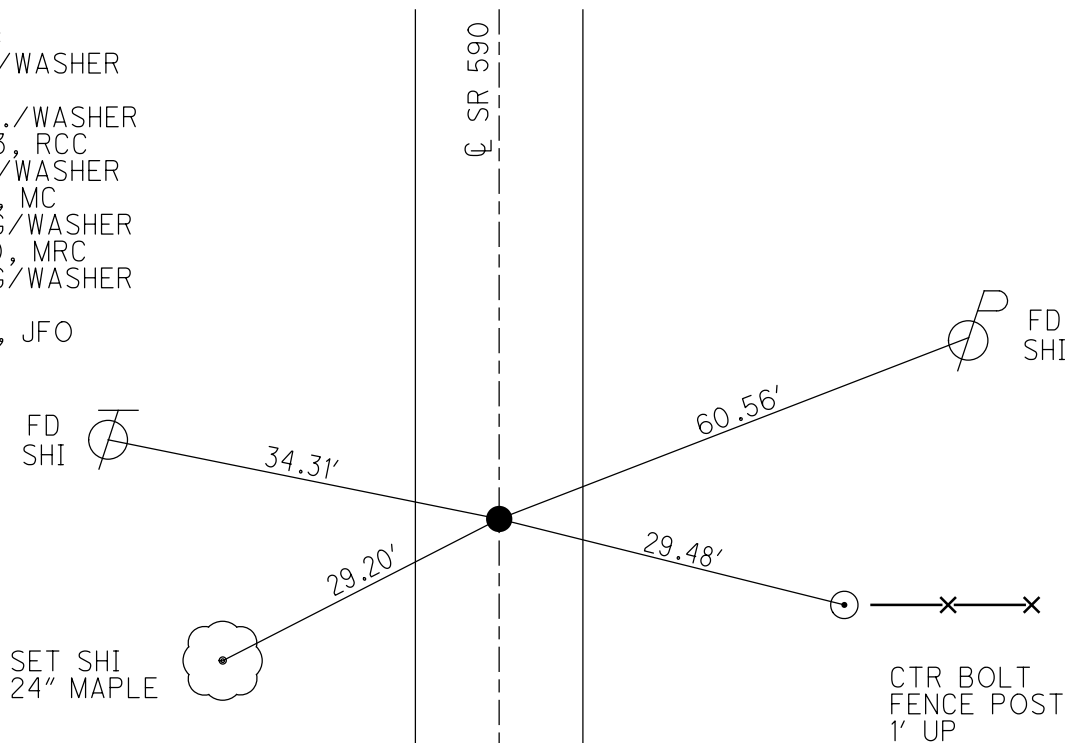
PERSONNEL \_\_\_\_\_ REFERENCE NO. 1 SHEET 3 OF 33  
 NOTES TRENKA DATE 6-11-18 ROUTE SR 590  
 H.C. RHOADES WEATHER CLOUDY COUNTY SANDUSKY  
 R.C. TRENKA TEMP. 64° TOWNSHIP JACKSON  
 DWG BY AUBLE PID 95765 SECTION 34  
 T 4 N R 14 E

TYPE MONUMENT MAG/WASHER  
 ON SURFACE - ~~BELOW~~ ON  
 OFFSET Q PAVEMENT ON LT : RT  
10.2' TO LT EDGE PAVEMENT  
 STATION: 26+84



HORZ. DATUM: NAD83(2011) GEOID: 2012A  
 GRID: NORTHING: 581454.840 EASTING: 1766297.552

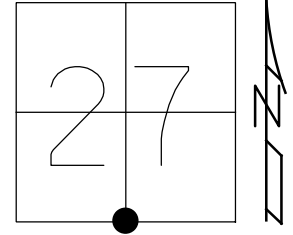
RECORD:  
 FD P.K./WASHER  
 5/4/82  
 SET P.K./WASHER  
 6/29/93, RCC  
 FD P.K./WASHER  
 7/21/10, MC  
 SET MAG/WASHER  
 10/19/10, MRC  
 SET MAG/WASHER  
 REF1  
 8-23-19, JFO



O.D.O.T. DISTRICT 2 SURVEY OFFICE (USE ONLY)

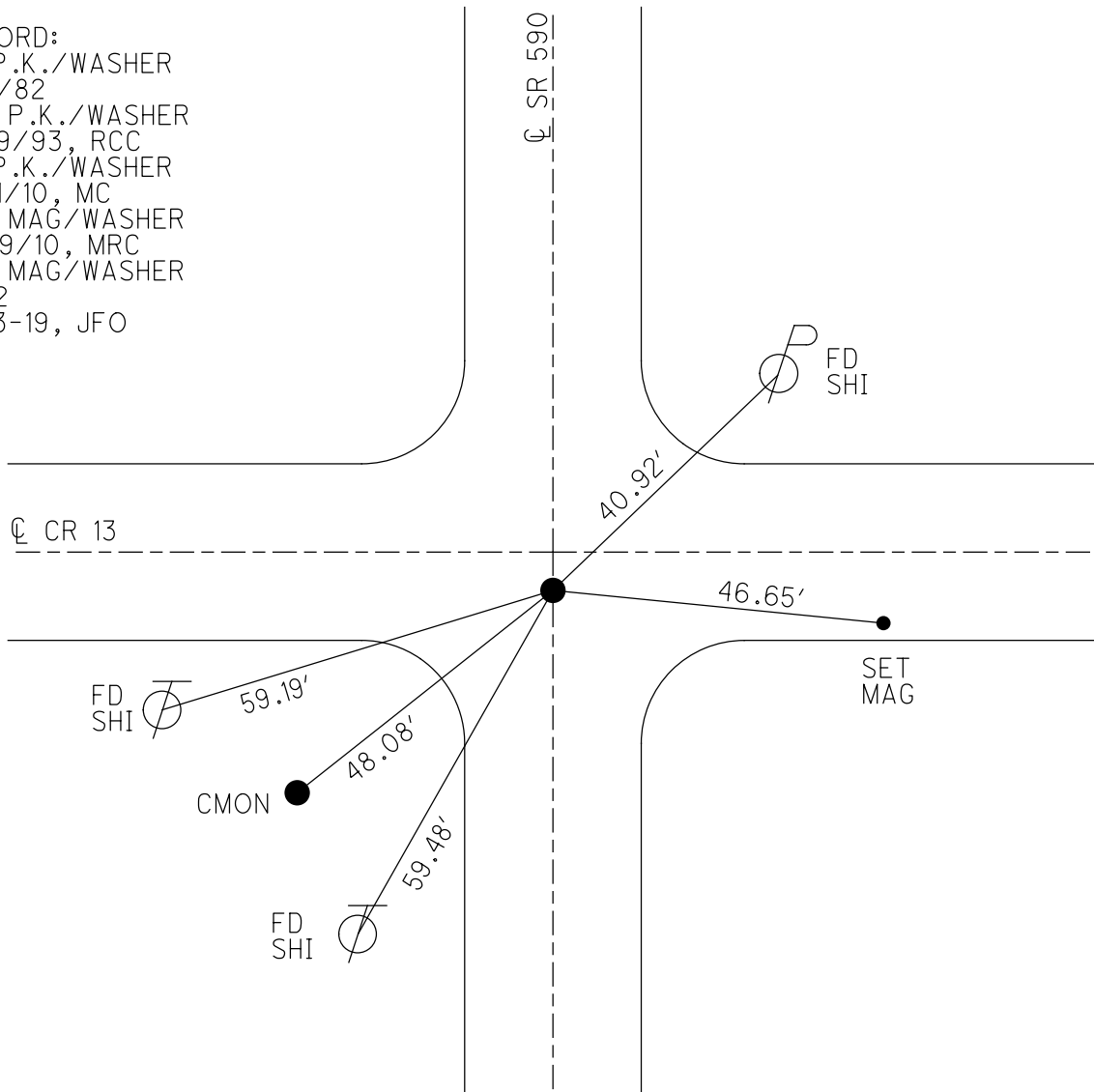
PERSONNEL \_\_\_\_\_ REFERENCE NO. 2 SHEET 4 OF 33  
 NOTES TRENKA DATE 6-11-18 ROUTE SR 590  
 H.C. RHOADES WEATHER CLOUDY COUNTY SANDUSKY  
 R.C. TRENKA TEMP. 64° TOWNSHIP JACKSON  
 DWG BY AUBLE PID 95765 SECTION 27  
 T 4 N R 14 E

TYPE MONUMENT MAG/WASHER  
 ON SURFACE - ~~BELOW~~ ON  
 OFFSET  $\bar{C}$  PAVEMENT 0.3' ~~LT~~ : RT  
11' TO LT EDGE PAVEMENT  
 STATION: 52+84



HORZ. DATUM: NAD83(2011) GEOID: 2012A  
 GRID: NORTHING: 584058.573 EASTING: 1766406.960

RECORD:  
 FD P.K./WASHER  
 5/4/82  
 SET P.K./WASHER  
 6/29/93, RCC  
 FD P.K./WASHER  
 7/21/10, MC  
 SET MAG/WASHER  
 10/19/10, MRC  
 SET MAG/WASHER  
 REF2  
 8-23-19, JFO



O.D.O.T. DISTRICT 2 SURVEY OFFICE (USE ONLY)

PERSONNEL

REFERENCE NO. 3

SHEET 5 OF 33

NOTES TRENKA  
 H.C. RHOADES  
 R.C. TRENKA

DATE 6-11-18  
 WEATHER CLOUDY  
 TEMP. 64°

ROUTE SR 590  
 COUNTY SANDUSKY  
 TOWNSHIP JACKSON  
 SECTION 27  
 T 4 N R 14 E

DWG BY AUBLE PID 95765

TYPE MONUMENT MAG/WASHER

ON SURFACE - ~~BELOW~~ ON

OFFSET  $\varnothing$  PAVEMENT 1.5' LT : ~~RT~~  
8.9' TO LT EDGE PAVEMENT

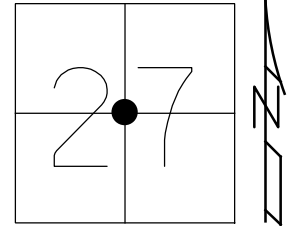
STATION: 73+53

HORZ.DATUM: NAD83(2011)

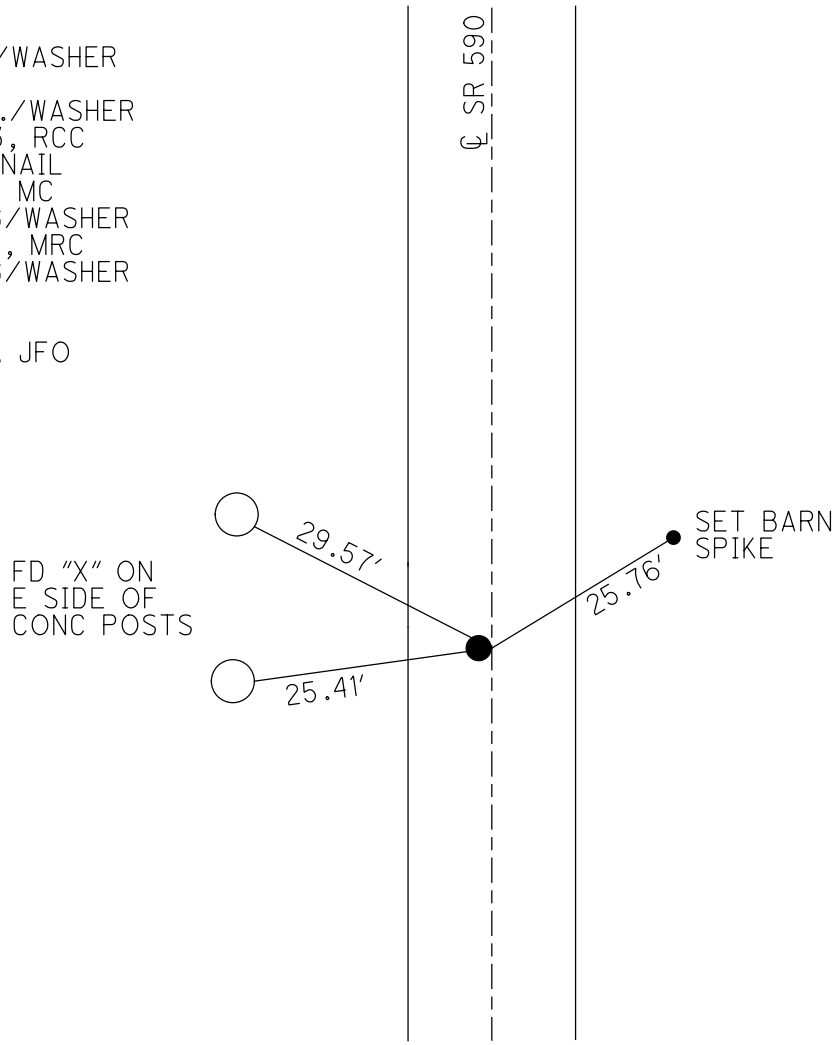
GEOID: 2012A

GRID: NORTHING: 586126.785

EASTING: 1766405.537



RECORD:  
 FD P.K./WASHER  
 5/4/82  
 SET P.K./WASHER  
 6/29/93, RCC  
 FD MAG NAIL  
 7/21/10, MC  
 SET MAG/WASHER  
 10/19/10, MRC  
 SET MAG/WASHER  
 1" DOWN  
 REF3  
 8-23-19, JFO



O.D.O.T. DISTRICT 2 SURVEY OFFICE (USE ONLY)

PERSONNEL

REFERENCE NO. 4

SHEET 6 OF 33

NOTES TRENKA DATE 6-11-18

H.C. RHOADES WEATHER CLOUDY

R.C. TRENKA TEMP. 64°

ROUTE SR 590

COUNTY SANDUSKY

TOWNSHIP JACKSON

SECTION 27

DWG BY AUBLE PID 95765

T 4 N R 14 E

TYPE MONUMENT MAG/WASHER

ON SURFACE - ~~BELOW~~ ON

OFFSET Q PAVEMENT 0.54' LT : ~~RT~~

9.7' TO LT EDGE PAVEMENT

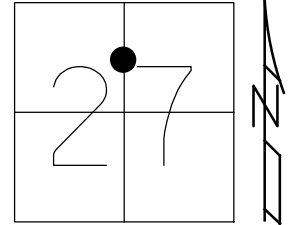
STATION: 93+07

HORZ.DATUM: NAD83(2011)

GEOID: 2012A

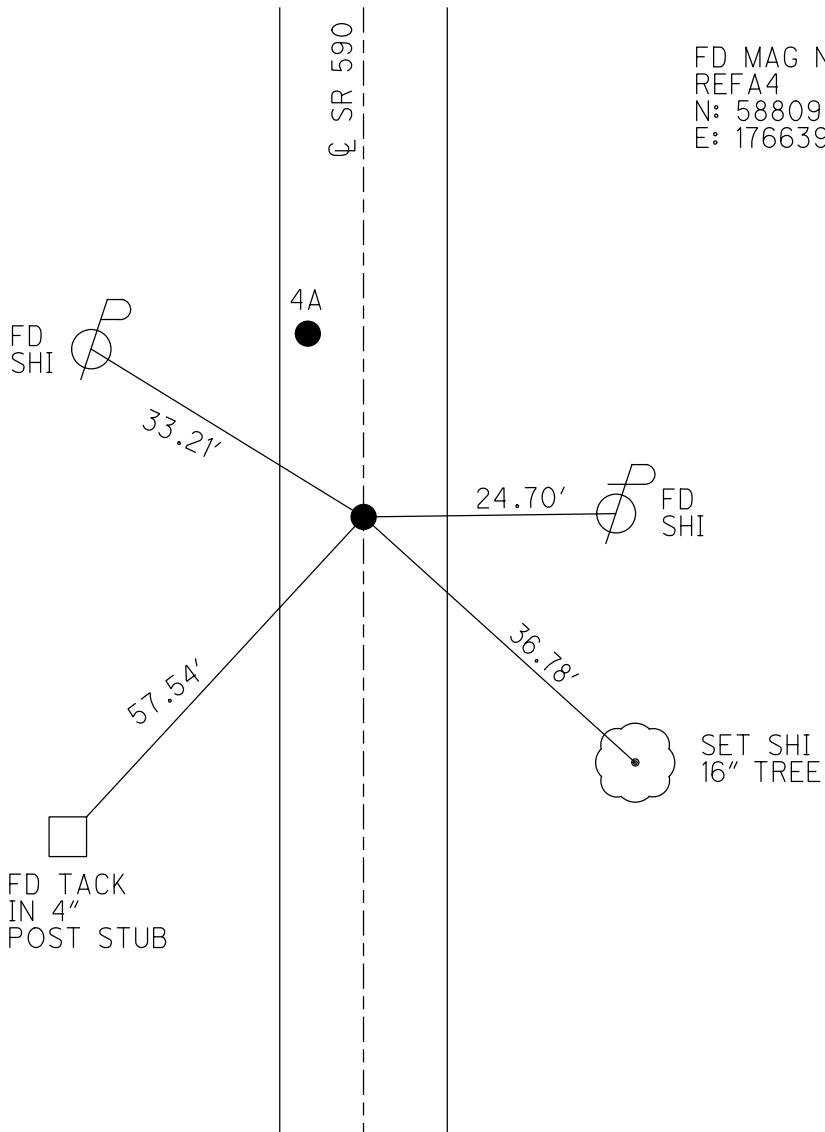
GRID: NORTHING: 588080.951

EASTING: 1766409.292



RECORD:  
 FD P.K./WASHER  
 5/4/82  
 SET P.K./WASHER  
 6/29/93, RCC  
 FD R.R.SPIKE  
 1" DOWN  
 7/21/10, MC  
 SET MAG/WASHER  
 10/19/10, MRC  
 FD MAG/WASHER  
 1" DOWN  
 REF4  
 8-23-19, JFO

FD MAG NAIL  
 REF4  
 N: 588098.470  
 E: 1766399.634



O.D.O.T. DISTRICT 2 SURVEY OFFICE (USE ONLY)

PERSONNEL

REFERENCE NO. 5

SHEET 7 OF 33

NOTES TRENKA

DATE 6-11-18

ROUTE SR 590

H.C. RHOADES

WEATHER CLOUDY

COUNTY SANDUSKY

R.C. TRENKA

TEMP. 64°

TOWNSHIP JACKSON

DWG BY AUBLE PID 95765

SECTION 22

T 4 N R 14 E

TYPE MONUMENT MAG/WASHER

ON SURFACE - ~~BELOW~~ ON

OFFSET Q PAVEMENT ON LT : RT

11' TO LT EDGE PAVEMENT

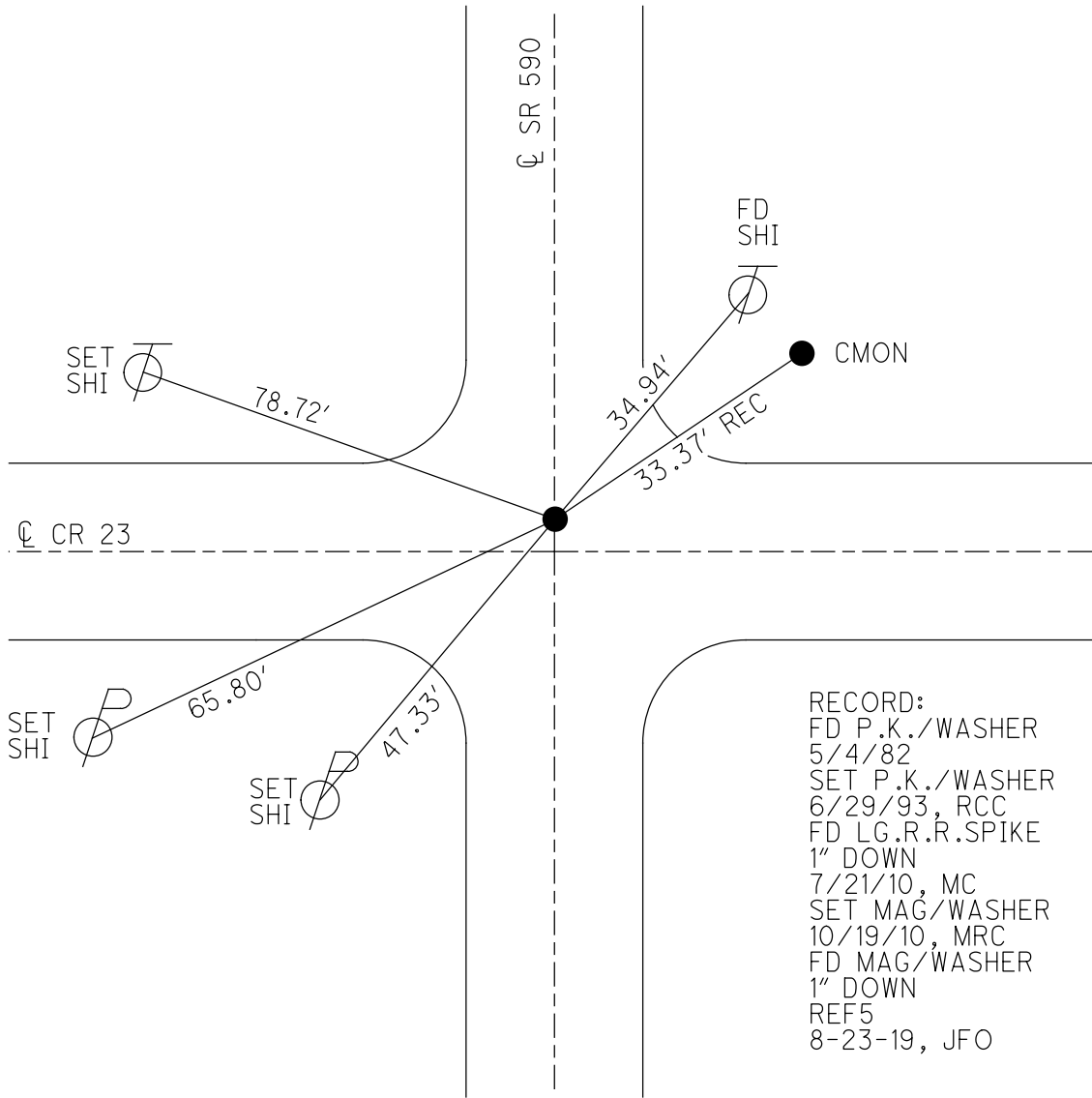
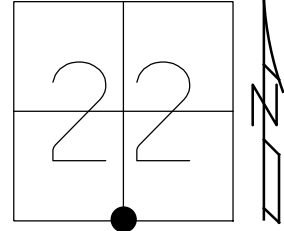
STATION: 106+48

HORZ. DATUM: NAD83(2011)

GEOID: 2012A

GRID: NORTHING: 589421.849

EASTING: 1766405.788

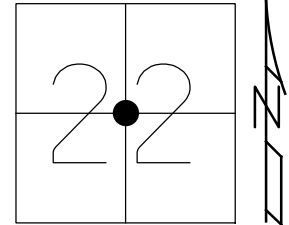


RECORD:  
 FD P.K./WASHER  
 5/4/82  
 SET P.K./WASHER  
 6/29/93, RCC  
 FD LG.R.R.SPIKE  
 1" DOWN  
 7/21/10, MC  
 SET MAG/WASHER  
 10/19/10, MRC  
 FD MAG/WASHER  
 1" DOWN  
 REF5  
 8-23-19, JFO

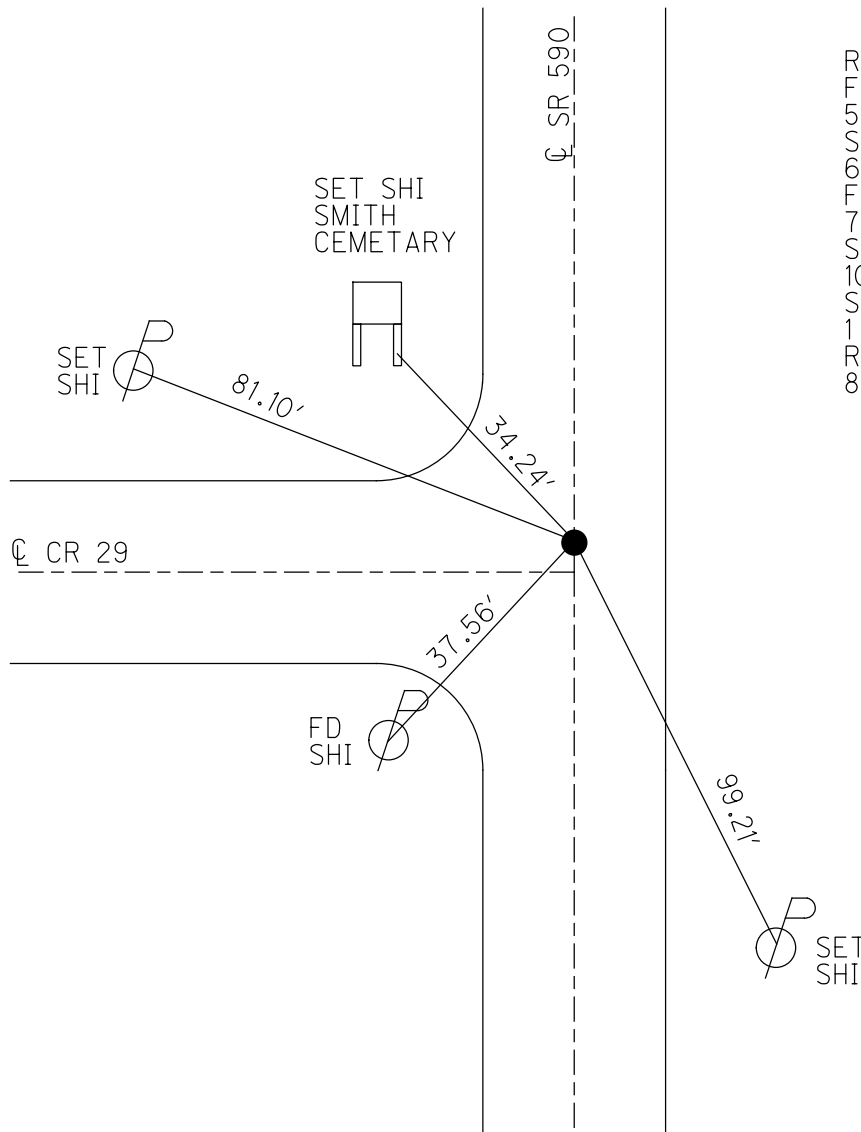
O.D.O.T. DISTRICT 2 SURVEY OFFICE (USE ONLY)

PERSONNEL \_\_\_\_\_ REFERENCE NO. 6 SHEET 8 OF 33  
 NOTES TRENKA DATE 6-11-18 ROUTE SR 590  
 H.C. RHOADES WEATHER CLOUDY COUNTY SANDUSKY  
 R.C. TRENKA TEMP. 64° TOWNSHIP JACKSON  
 DWG BY AUBLE PID 95765 SECTION 22  
 T 4 N R 14 E

TYPE MONUMENT MAG/WASHER  
 ON SURFACE - ~~BELOW~~ ON  
 OFFSET ☉ PAVEMENT ON LT : RT  
10.6' TO RT EDGE PAVEMENT  
 STATION: 132+87



HORZ.DATUM: NAD83(2011) GEOID: 2012A  
 GRID: NORTHING: 592060.067 EASTING: 1766374.372



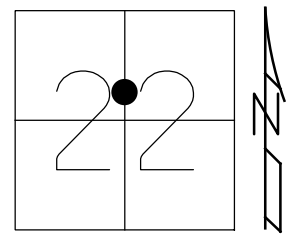
RECORD:  
 FD P.K./WASHER  
 5/4/82  
 SET P.K./WASHER  
 6/29/93, RCC  
 FD P.K.NAIL  
 7/21/10, MC  
 SET MAG/WASHER  
 10/19/10, MRC  
 SET MAG/WASHER  
 1 1/2" DOWN  
 REF6  
 8-23-19, JFO



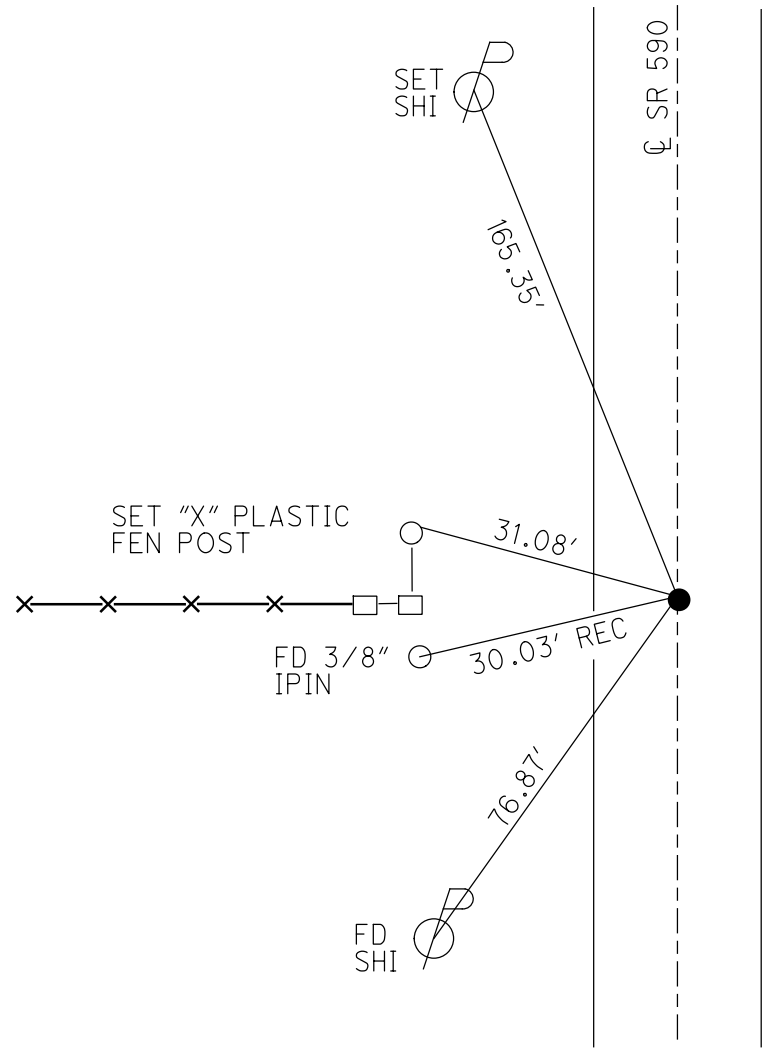
O.D.O.T. DISTRICT 2 SURVEY OFFICE (USE ONLY)

PERSONNEL \_\_\_\_\_ REFERENCE NO. 6 A SHEET 9 OF 33  
 NOTES TRENKA DATE 6-11-18 ROUTE SR 590  
 H.C. RHOADES WEATHER CLOUDY COUNTY SANDUSKY  
 R.C. TRENKA TEMP. 64° TOWNSHIP JACKSON  
 DWG BY AUBLE PID 95765 SECTION 22  
 T 4 N R 14 E

TYPE MONUMENT MAG/WASHER  
 ON SURFACE - ~~BELOW~~ ON  
 OFFSET ☐ PAVEMENT 3' LT : ~~RT~~  
7.3' TO W EDGE PAVEMENT  
 STATION: 147+34



HORZ.DATUM: NAD83(2011) GEOID: 2012A  
 GRID: NORTHING: 593507.922 EASTING: 1766353.939



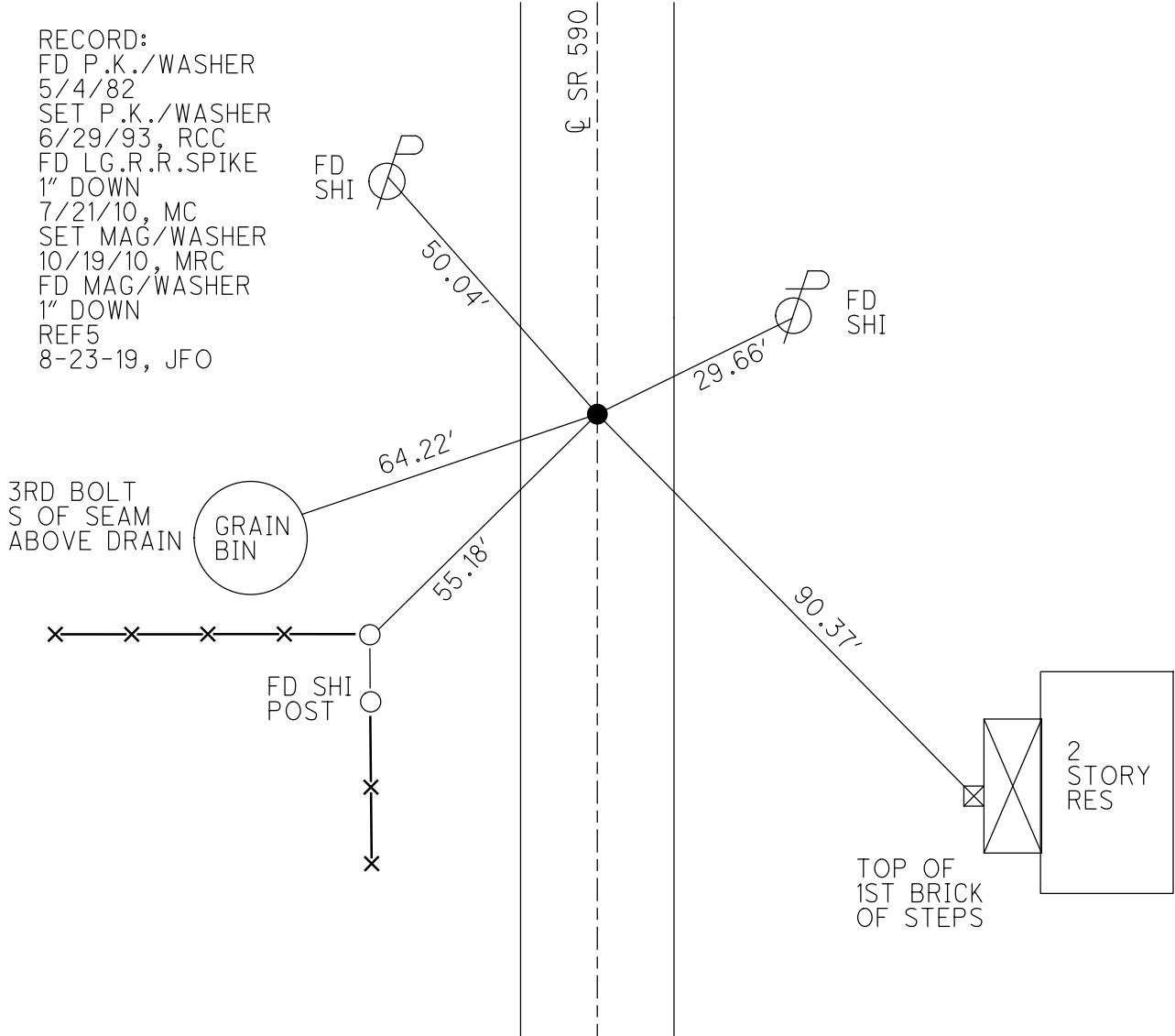
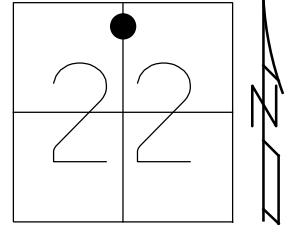
RECORD:  
 FD P.K./WASHER  
 1.5" DOWN  
 5/4/82  
 SET P.K./WASHER  
 6/29/93, RCC  
 FD P.K./WASHER  
 7/21/10, MC  
 SET MAG/WASHER  
 10/19/10, MRC  
 FD MAG/WASHER  
 1" DOWN  
 REF6  
 8-23-19, JFO

O.D.O.T. DISTRICT 2 SURVEY OFFICE (USE ONLY)

PERSONNEL \_\_\_\_\_ REFERENCE NO. 6 B SHEET 10 OF 33  
 NOTES TRENKA DATE 6-11-18 ROUTE SR 590  
 H.C. RHOADES WEATHER CLOUDY COUNTY SANDUSKY  
 R.C. TRENKA TEMP. 64° TOWNSHIP JACKSON  
 DWG BY AUBLE PID 95765 SECTION 22  
 T 4 N R 14 E

TYPE MONUMENT MAG/WASHER  
 ON SURFACE - ~~BELOW~~ ON  
 OFFSET  $\text{C}$  PAVEMENT 3.7' LT : ~~RT~~  
6.6' TO LT EDGE PAVEMENT  
 STATION: 153+27

HORZ. DATUM: NAD83(2011) GEOID: 2012A  
 GRID: NORTHING: 594098.868 EASTING: 1766360.555



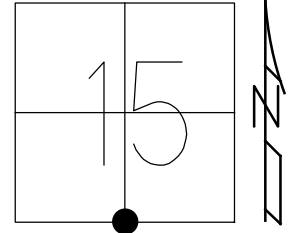
RECORD:  
 FD P.K./WASHER  
 5/4/82  
 SET P.K./WASHER  
 6/29/93, RCC  
 FD LG.R.R.SPIKE  
 1" DOWN  
 7/21/10, MC  
 SET MAG/WASHER  
 10/19/10, MRC  
 FD MAG/WASHER  
 1" DOWN  
 REF5  
 8-23-19, JFO

O.D.O.T. DISTRICT 2 SURVEY OFFICE (USE ONLY)

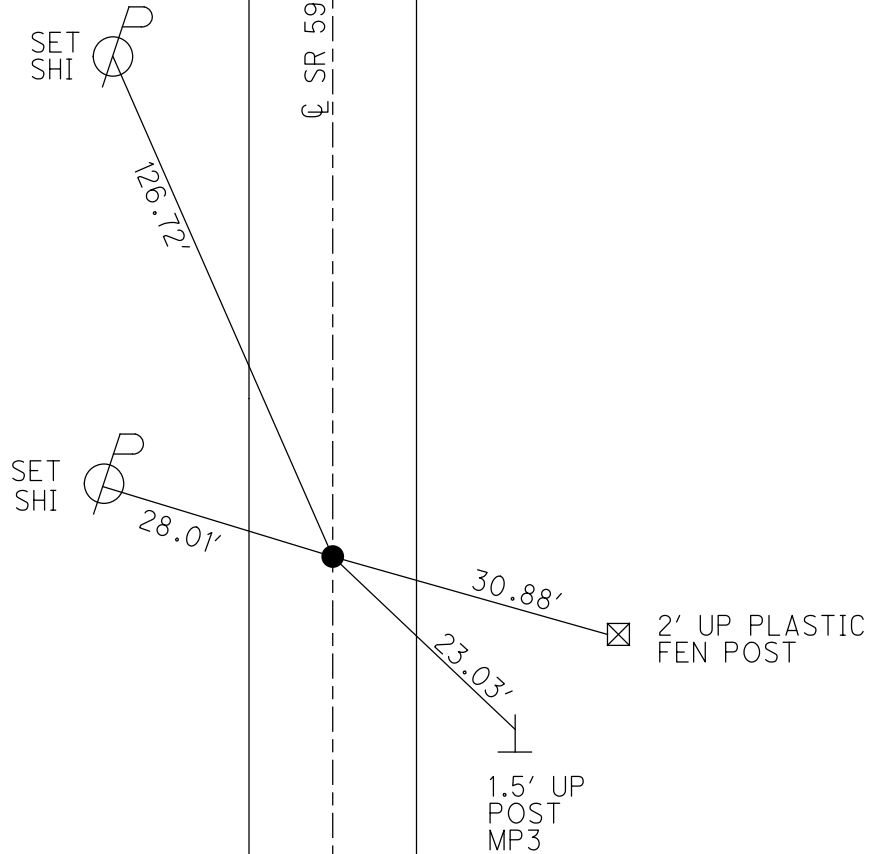
PERSONNEL \_\_\_\_\_ REFERENCE NO. 6 C SHEET 11 OF 33  
 NOTES TRENKA DATE 6-11-18 ROUTE SR 590  
 H.C. RHOADES WEATHER CLOUDY COUNTY SANDUSKY  
 R.C. TRENKA TEMP. 68° TOWNSHIP JACKSON  
 DWG BY AUBLE PID 95765 SECTION 15  
 T 4 N R 14 E

TYPE MONUMENT MAG/WASHER  
 ON SURFACE - ~~BELOW~~ ON  
 OFFSET ☐ PAVEMENT ON LT : RT  
10.5' TO LT EDGE PAVEMENT  
 STATION: 159+77

HORIZ.DATUM: NAD83(2011) GEOID: 2012A  
 GRID: NORTHING: 594746.919 EASTING: 1766407.565



RECORD:  
 FD P.K./WASHER  
 5/4/82  
 SET P.K./WASHER  
 6/29/93, RCC  
 FD P.K./WASHER  
 7/20/10, MC  
 SET MAG/WASHER  
 10/19/10, MRC  
 FD MAG/WASHER  
 1" DOWN  
 REFC6  
 8-23-19, JFO



O.D.O.T. DISTRICT 2 SURVEY OFFICE (USE ONLY)

PERSONNEL

REFERENCE NO. 6 D

SHEET 12 OF 33

NOTES TRENKA

DATE 6-11-18

ROUTE SR 590

H.C. RHOADES

WEATHER CLOUDY

COUNTY SANDUSKY

R.C. TRENKA

TEMP. 68°

TOWNSHIP JACKSON

DWG BY AUBLE

PID 95765

SECTION 15

T 4 N R 14 E

TYPE MONUMENT MAG/WASHER

ON SURFACE - ~~BELOW~~ ON

OFFSET Q PAVEMENT 2' LT : ~~RT~~

8' TO LT EDGE PAVEMENT

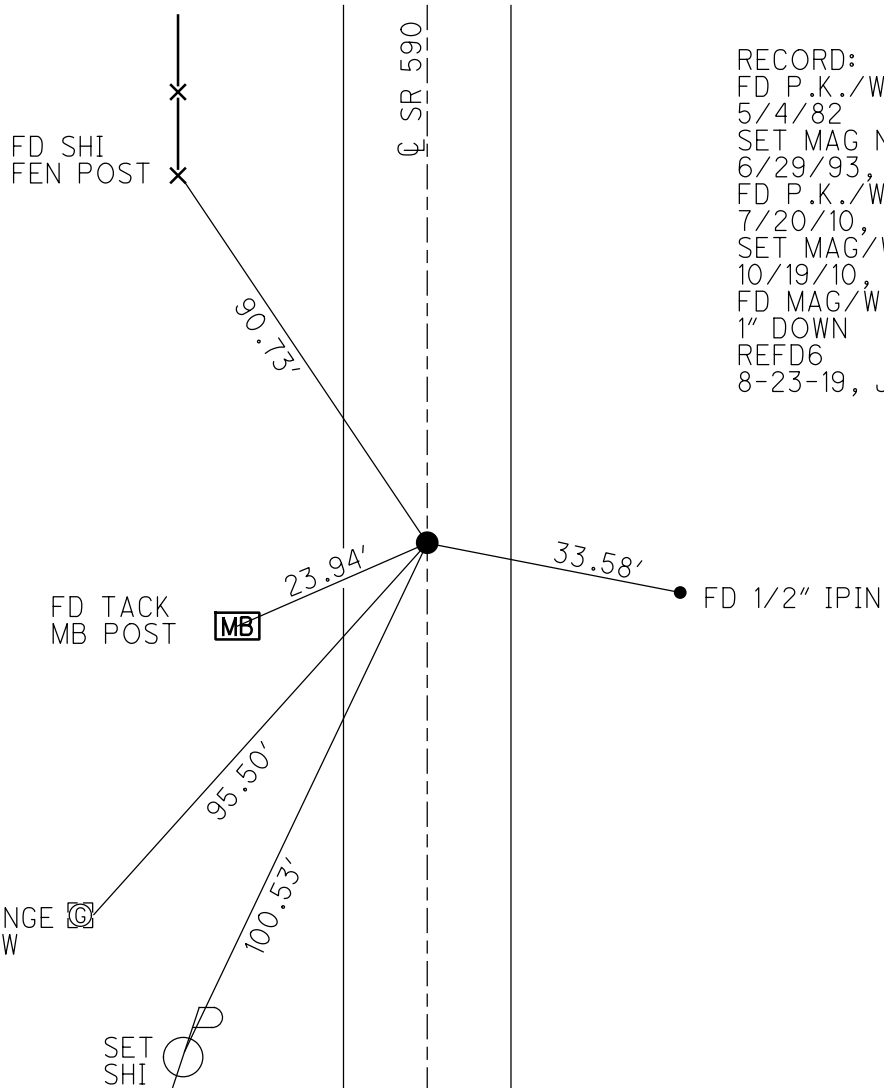
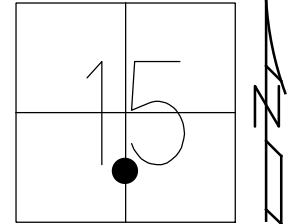
STATION: 174+76

HORIZ.DATUM: NAD83(2011)

GEOID: 2012A

GRID: NORTHING: 596246.507

EASTING: 1766512.385



RECORD:  
 FD P.K./WASHER  
 5/4/82  
 SET MAG NAIL  
 6/29/93, RCC  
 FD P.K./WASHER  
 7/20/10, MC  
 SET MAG/WASHER  
 10/19/10, MRC  
 FD MAG/WASHER  
 1" DOWN  
 REFD6  
 8-23-19, JFO

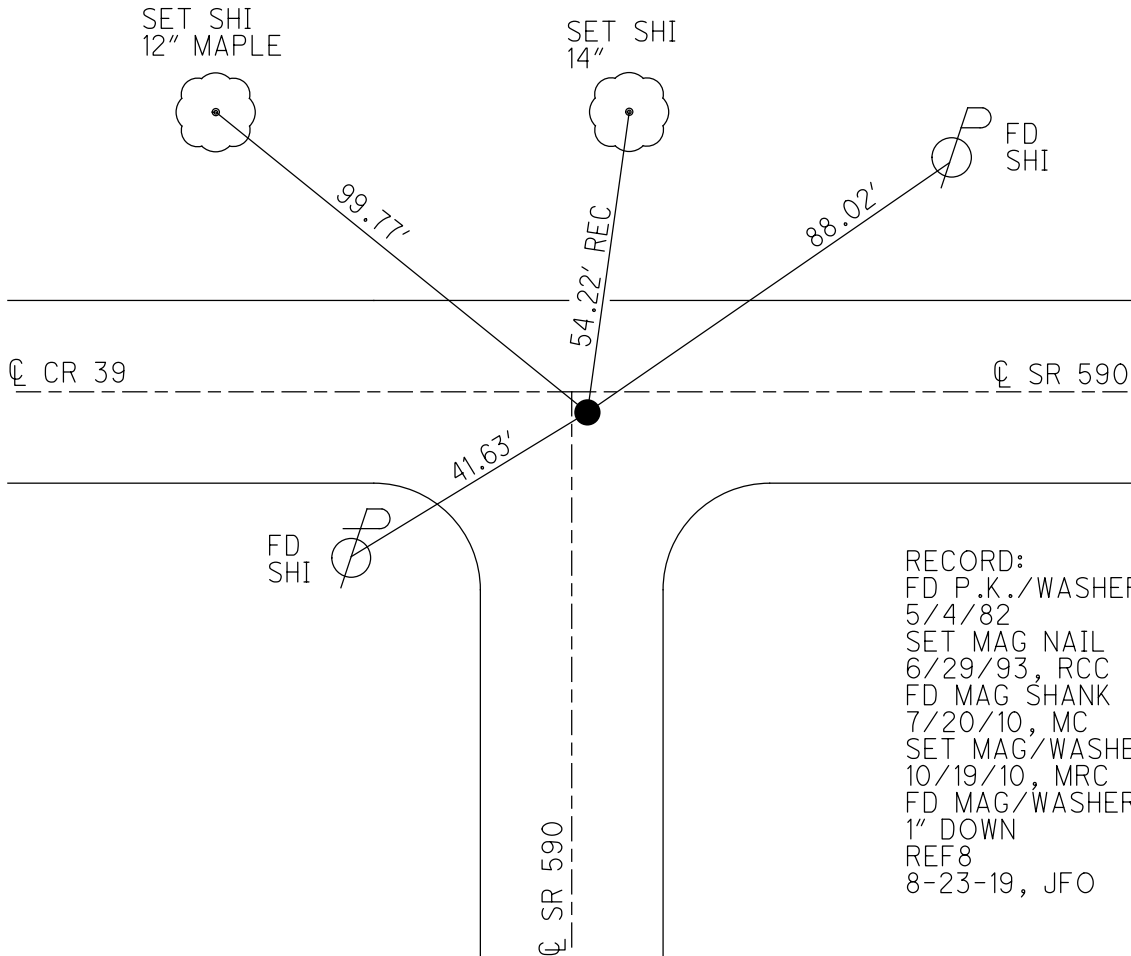
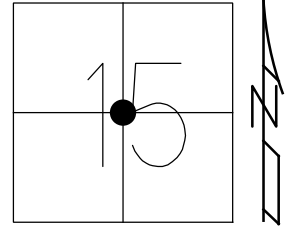
BOTTOM OF FLANGE C  
 TOP OF E/ELBOW  
 OF GAS METER

O.D.O.T. DISTRICT 2 SURVEY OFFICE (USE ONLY)

PERSONNEL \_\_\_\_\_ REFERENCE NO. 8 SHEET 13 OF 33  
 NOTES TRENKA DATE 6-11-18 ROUTE SR 590  
 H.C. RHOADES WEATHER CLOUDY COUNTY SANDUSKY  
 R.C. TRENKA TEMP. 68° TOWNSHIP JACKSON  
 DWG BY AUBLE PID 95765 SECTION 15  
 T 4 N R 14 E

TYPE MONUMENT MAG/WASHER  
 ON SURFACE - ~~BELOW~~ ON \_\_\_\_\_  
 OFFSET  $\text{C}$  PAVEMENT 3.5' ~~LT~~ : RT  
13.2' TO N EDGE PAVEMENT  
 STATION: 186+07

HORZ. DATUM: NAD83(2011) GEOID: 2012A  
 GRID: NORTHING: 597376.093 EASTING: 1766588.889

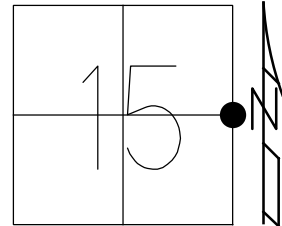


RECORD:  
 FD P.K./WASHER  
 5/4/82  
 SET MAG NAIL  
 6/29/93, RCC  
 FD MAG SHANK  
 7/20/10, MC  
 SET MAG/WASHER  
 10/19/10, MRC  
 FD MAG/WASHER  
 1" DOWN  
 REF8  
 8-23-19, JFO

O.D.O.T. DISTRICT 2 SURVEY OFFICE (USE ONLY)

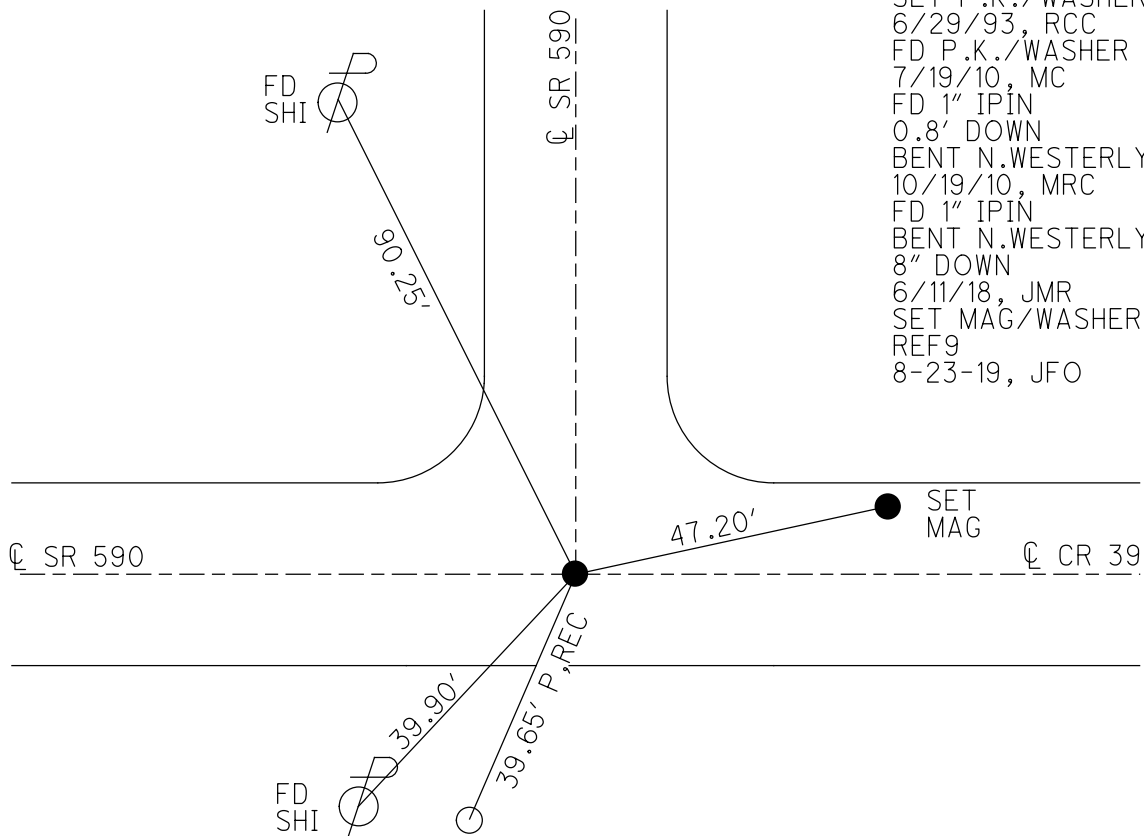
PERSONNEL \_\_\_\_\_ REFERENCE NO. 9 SHEET 14 OF 33  
 NOTES TRENKA DATE 6-11-18 ROUTE SR 590  
 H.C. RHOADES WEATHER CLOUDY COUNTY SANDUSKY  
 R.C. TRENKA TEMP. 68° TOWNSHIP JACKSON  
 DWG BY AUBLE PID 95765 SECTION 15  
 T 4 N R 14 E

TYPE MONUMENT 1" IPIN  
~~ON SURFACE~~ - BELOW 8"  
 OFFSET  $\text{C}$  PAVEMENT 3.5'  $\text{L}$  :  $\text{RT}$   
9.5' TO RT EDGE PAVEMENT  
 STATION: 210+29



HORZ. DATUM: NAD83(2011) GEOID: 2012A  
 GRID: NORTHING: 597412.418 EASTING: 1769003.548

RECORD:  
 FD P.K./WASHER  
 5/5/82  
 SET P.K./WASHER  
 6/29/93, RCC  
 FD P.K./WASHER  
 7/19/10, MC  
 FD 1" IPIN  
 0.8' DOWN  
 BENT N.WESTERLY  
 10/19/10, MRC  
 FD 1" IPIN  
 BENT N.WESTERLY  
 8" DOWN  
 6/11/18, JMR  
 SET MAG/WASHER  
 REF9  
 8-23-19, JFO



PUNCH HOLE  
 CONC MON  
 LEANING NW

O.D.O.T. DISTRICT 2 SURVEY OFFICE (USE ONLY)

PERSONNEL

REFERENCE NO. 9 A

SHEET 15 OF 33

NOTES TRENKA

DATE 6-11-18

ROUTE SR 590

H.C. RHOADES

WEATHER CLOUDY

COUNTY SANDUSKY

R.C. TRENKA

TEMP. 72°

TOWNSHIP JACKSON

DWG BY AUBLE PID 95765

SECTION 15

T 4 N R 14 E

TYPE MONUMENT MAG/WASHER

ON SURFACE - ~~BELOW~~ ON

OFFSET 0.3' LT : ~~RT~~

10.6' TO RT EDGE PAVEMENT

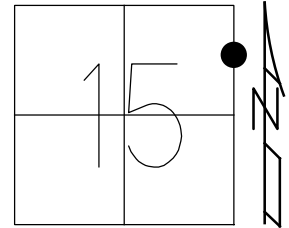
STATION: 227+85

HORZ. DATUM: NAD83(2011)

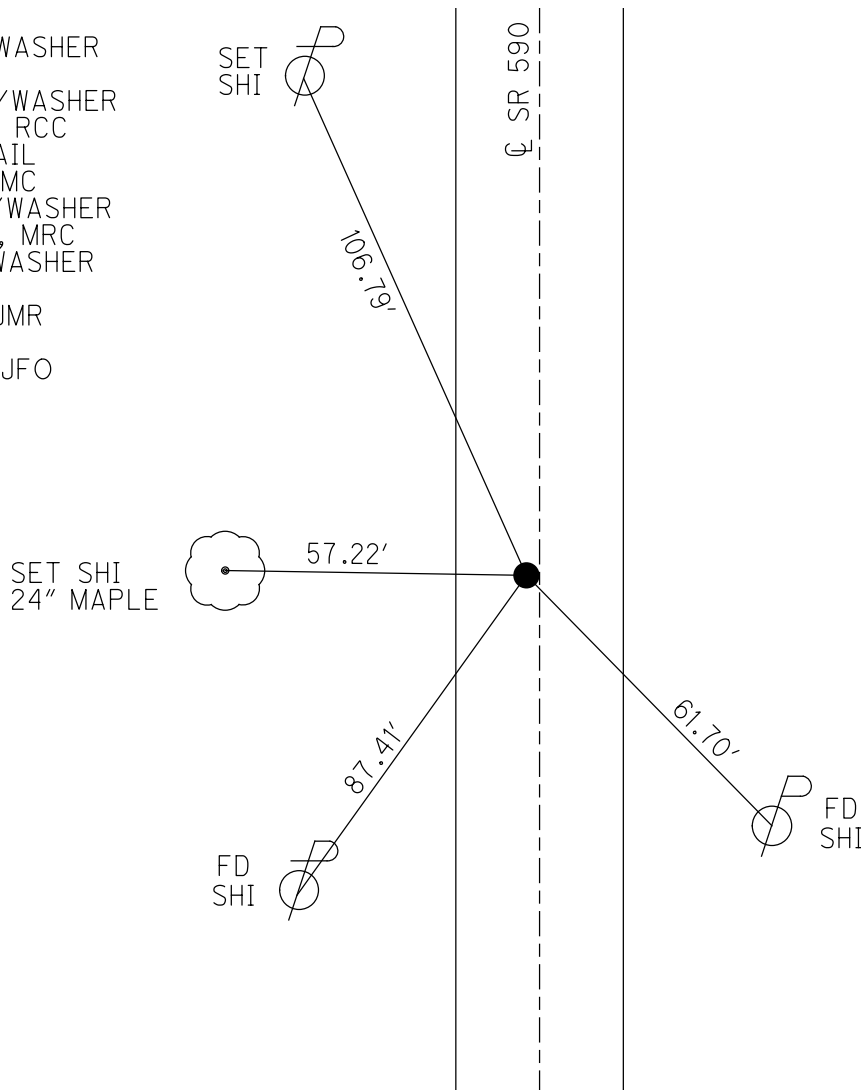
GEOID: 2012A

GRID: NORTHING: 599167.687

EASTING: 1769025.508



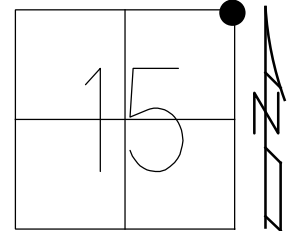
RECORD:  
 FD P.K./WASHER  
 5/5/82  
 SET P.K./WASHER  
 6/29/93, RCC  
 FD P.K.NAIL  
 7/19/10, MC  
 SET MAG/WASHER  
 10/20/10, MRC  
 FD MAG/WASHER  
 1" DOWN  
 6/11/18, JMR  
 REFA9  
 8-23-19, JFO



O.D.O.T. DISTRICT 2 SURVEY OFFICE (USE ONLY)

PERSONNEL \_\_\_\_\_ REFERENCE NO. 10 SHEET 16 OF 33  
 NOTES TRENKA DATE 6-11-18 ROUTE SR 590  
 H.C. RHOADES WEATHER CLOUDY COUNTY SANDUSKY  
 R.C. TRENKA TEMP. 72° TOWNSHIP JACKSON  
 DWG BY AUBLE PID 95765 SECTION 15  
 T 4 N R 14 E

TYPE MONUMENT MAG/WASHER  
 ON SURFACE - ~~BELOW~~ ON  
 OFFSET  $\text{C}$  PAVEMENT 1.5' LT : ~~RT~~  
9.8' TO LT EDGE PAVEMENT  
 STATION: 235+65

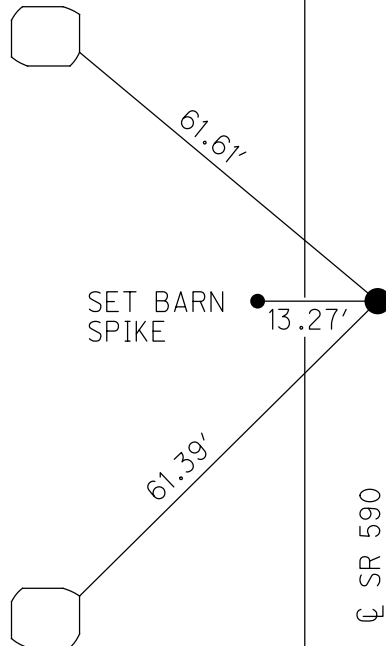


HORIZ.DATUM: NAD83(2011) GEOID: 2012A  
 GRID: NORTHING: 599946.779 EASTING: 1769034.914

RECORD:  
 FD SM.R.R.SPIKE  
 5/5/82  
 SET P.K./WASHER  
 6/29/93, RCC  
 FD P.K.SHANK  
 7/19/10, MC  
 SET MAG/WASHER  
 10/20/10, MRC  
 FD MAG/WASHER  
 1" DOWN  
 REF10  
 8-23-19, JFO

"X" ON LONG  
 GRAY STONE  
 ON S/E CORNER  
 2' UP

"X" WITH  
 MARKER ON TOP  
 WHITE STONE  
 1' UP



DIST. 10-10A= 104.85'



O.D.O.T. DISTRICT 2 SURVEY OFFICE (USE ONLY)

PERSONNEL

REFERENCE NO. 10 A

SHEET 17 OF 33

NOTES TRENKA

DATE 6-11-18

ROUTE SR 590

H.C. RHOADES

WEATHER CLOUDY

COUNTY SANDUSKY

R.C. TRENKA

TEMP. 72°

TOWNSHIP JACKSON

SECTION 15

DWG BY AUBLE PID 95765

T 4 N R 14 E

TYPE MONUMENT MAG/WASHER

ON SURFACE - ~~BELOW~~ ON

OFFSET  $\varnothing$  PAVEMENT 0.6' LT : ~~RT~~

9.8' TO LT EDGE PAVEMENT

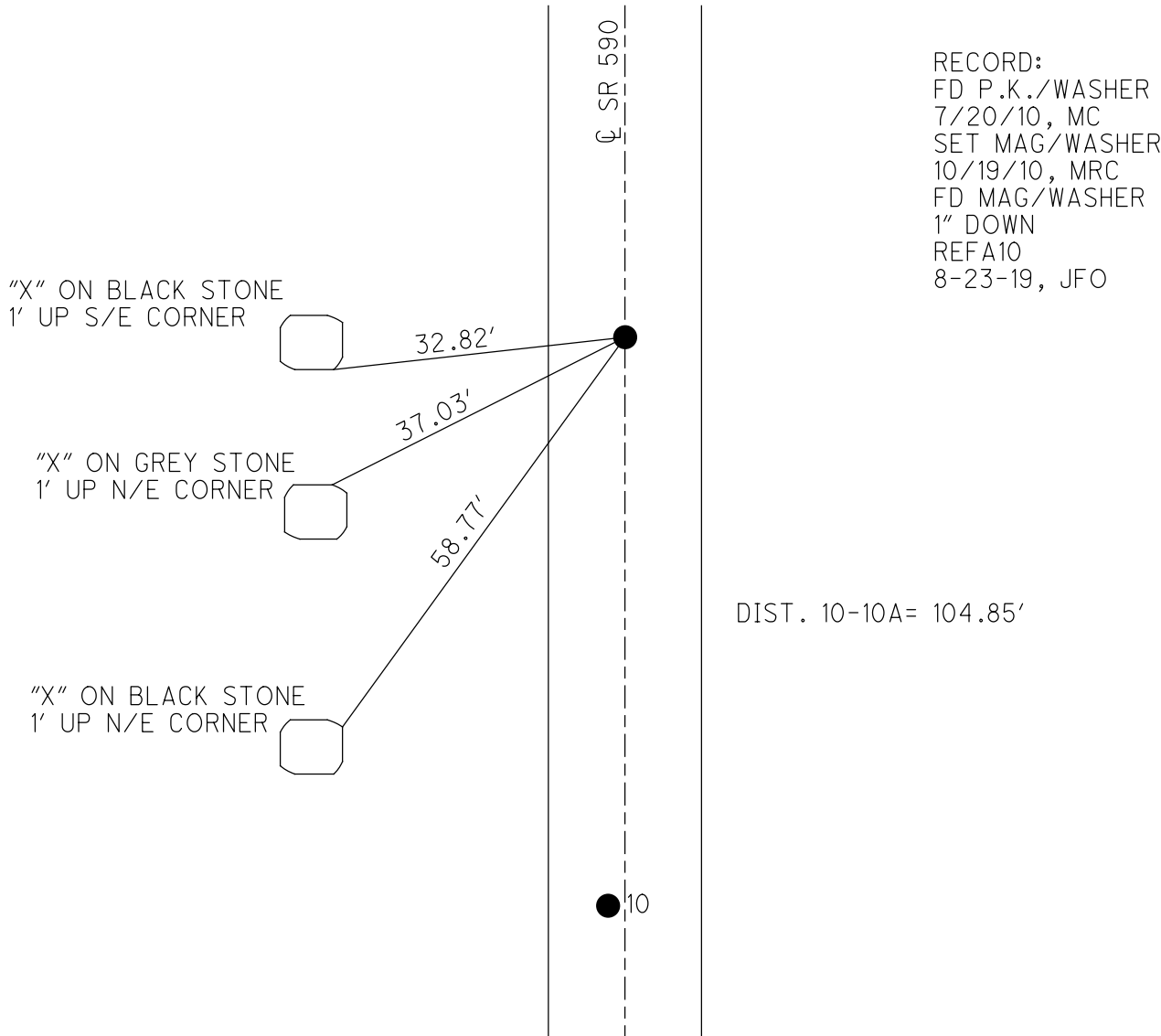
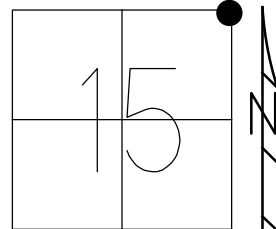
STATION: 235+65

HORZ.DATUM: NAD83(2011)

GEOID: 2012A

GRID: NORTHING: 600051.482

EASTING: 1769040.517



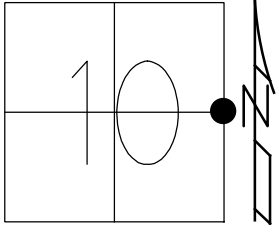
RECORD:  
 FD P.K./WASHER  
 7/20/10, MC  
 SET MAG/WASHER  
 10/19/10, MRC  
 FD MAG/WASHER  
 1" DOWN  
 REFA10  
 8-23-19, JFO

DIST. 10-10A= 104.85'

O.D.O.T. DISTRICT 2 SURVEY OFFICE (USE ONLY)

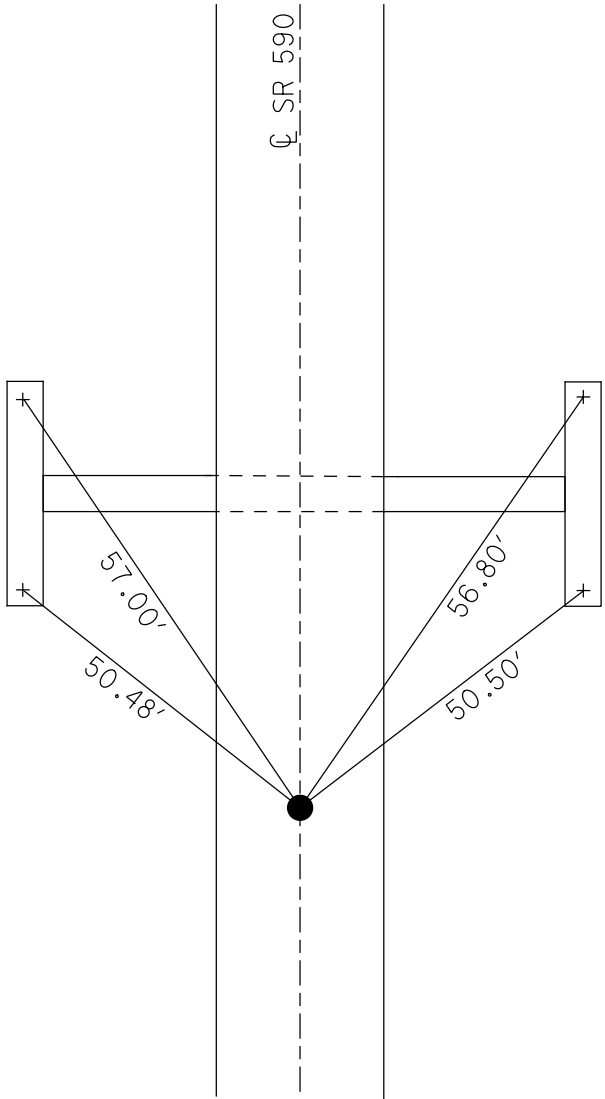
PERSONNEL \_\_\_\_\_ REFERENCE NO. 11 SHEET 18 OF 33  
 NOTES TRENKA DATE 6-11-18 ROUTE SR 590  
 H.C. RHOADES WEATHER CLOUDY COUNTY SANDUSKY  
 R.C. TRENKA TEMP. 72° TOWNSHIP JACKSON  
 \_\_\_\_\_ SECTION 10  
 DWG BY AUBLE PID 95765 T 4 N R 14 E

TYPE MONUMENT MAG/WASHER  
 ON SURFACE - ~~BELOW~~ ON  
 OFFSET  $\odot$  PAVEMENT 0.5' LT : ~~RT~~  
9.8' TO LT EDGE PAVEMENT  
 STATION: 263+15



HORZ.DATUM: NAD83(2011) GEOID: 2012A  
 GRID: NORTHING: 602690.962 EASTING: 1769166.176

RECORD:  
 FD SM.DIAMOND  
 HEAD IPIN  
 5/4/82  
 SET P.K./WASHER  
 6/29/93, RCC  
 FD P.K.SHANK  
 7/19/10, MC  
 SET MAG/WASHER  
 10/20/10, MRC  
 FD MAG/WASHER  
 1" DOWN  
 REF11  
 8-23-19, JFO



SET "+" ON HEADWALLS

O.D.O.T. DISTRICT 2 SURVEY OFFICE (USE ONLY)

PERSONNEL

REFERENCE NO. 12

SHEET 19 OF 33

NOTES RHOADES

DATE 6-11-18

ROUTE SR 590

H.C. O'DONNELL

WEATHER CLOUDY

COUNTY SANDUSKY

R.C. SEAMAN

TEMP. 72°

TOWNSHIP JACKSON

SECTION 3

DWG BY MILLER PID 95765

T 4 N R 14 E

TYPE MONUMENT MONBOX, W 3/4" IPIN

ON SURFACE - ~~BELOW~~ ON

OFFSET  $\varnothing$  PAVEMENT 6.42' LT : RT

- TO - EDGE PAVEMENT

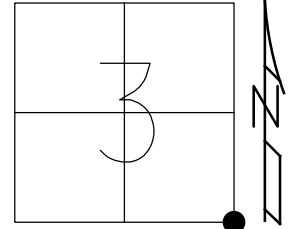
STATION: 289+82

HORZ.DATUM: NAD83(2011)

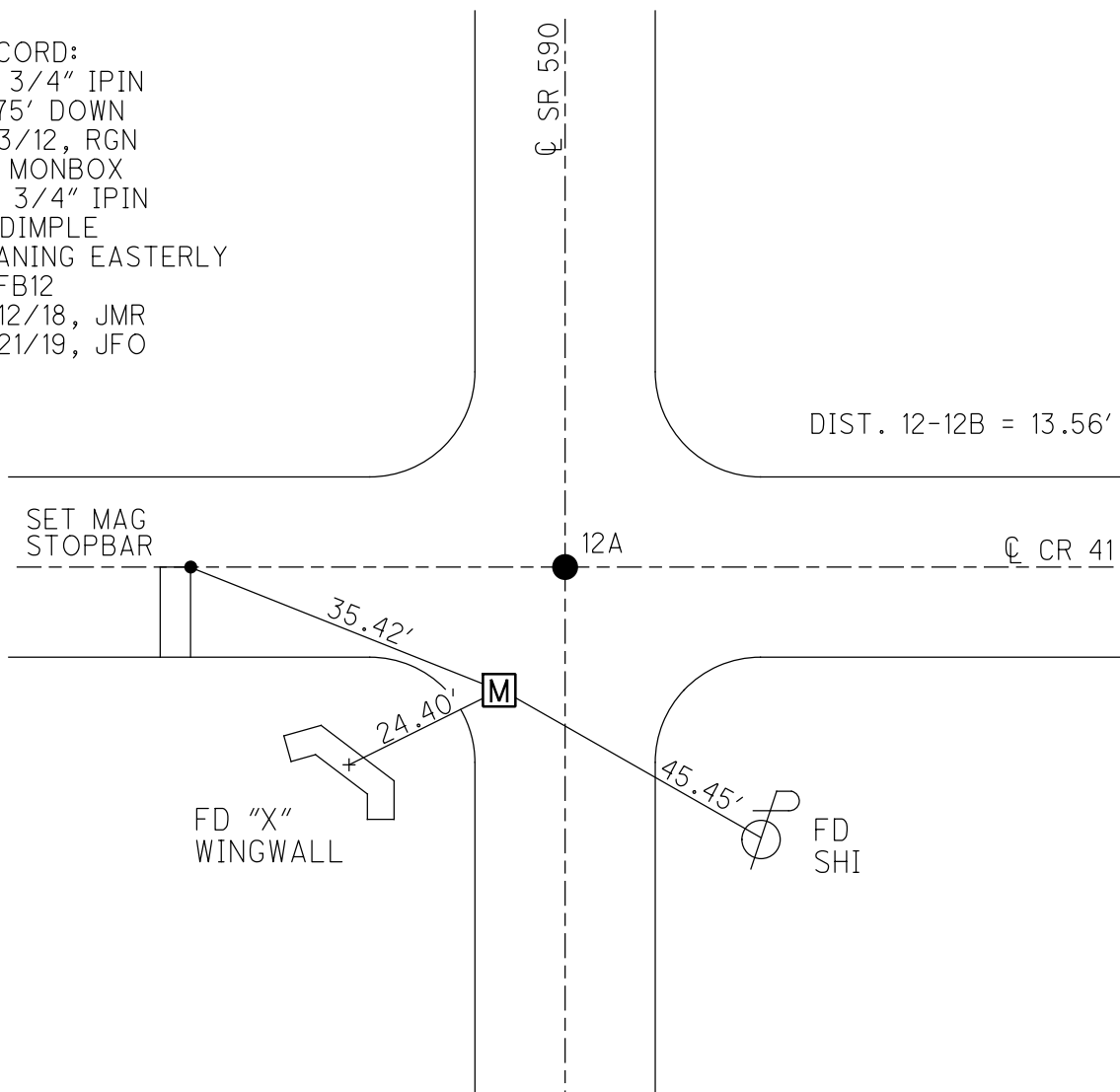
GEOID: 2012A

GRID: NORTHING: 605351.886

EASTING: 1769288.701



RECORD:  
 FD 3/4" IPIN  
 0.75' DOWN  
 8/3/12, RGN  
 FD MONBOX  
 W/ 3/4" IPIN  
 W/DIMPLE  
 LEANING EASTERLY  
 REFB12  
 6/12/18, JMR  
 8/21/19, JFO



O.D.O.T. DISTRICT 2 SURVEY OFFICE (USE ONLY)

PERSONNEL

REFERENCE NO. 12A

SHEET 20 OF 33

NOTES RHOADES

DATE 2/27/18

ROUTE SR 590

H.C. O'DONNELL

WEATHER SUNNY

COUNTY SANDUSKY

R.C. SEAMAN

TEMP. 42°

TOWNSHIP JACKSON

SECTION 3

DWG BY MILLER PID 101240

T 4 N R 14 E

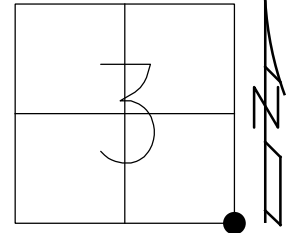
TYPE MONUMENT MAG/WASHER

ON SURFACE - ~~BELOW~~ ON                     

OFFSET  $\varnothing$  PAVEMENT 0.8' ~~LT~~ : RT

           TO            EDGE PAVEMENT

STATION: 289+93



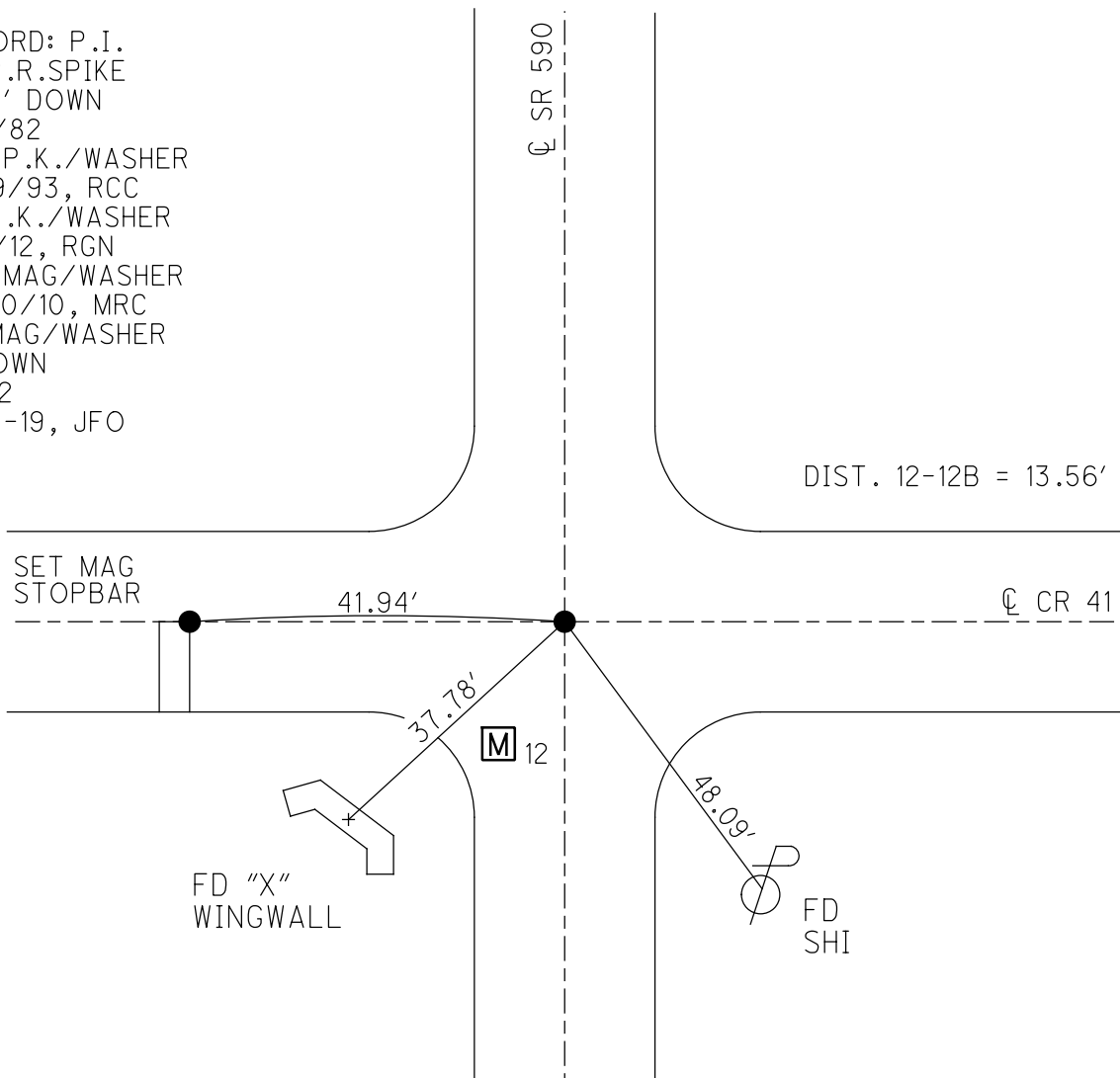
HORZ.DATUM: NAD83-2011

GEOID: NAVD88-2012A

GRID: NORTHING: 605363.126

EASTING: 1769296.245

RECORD: P.I.  
FD R.R.SPIKE  
0.35' DOWN  
5/5/82  
SET P.K./WASHER  
6/29/93, RCC  
FD P.K./WASHER  
8/3/12, RGN  
SET MAG/WASHER  
10/20/10, MRC  
FD MAG/WASHER  
1" DOWN  
REF12  
8-23-19, JFO



O.D.O.T. DISTRICT 2 SURVEY OFFICE (USE ONLY)

PERSONNEL

REFERENCE NO. 13

SHEET 21 OF 33

NOTES RHOADES DATE 2/27/18

ROUTE SR 590

H.C. O'DONNELL WEATHER SUNNY

COUNTY SANDUSKY

R.C. SEAMAN TEMP. 42°

TOWNSHIP JACKSON

DWG BY MILLER PID 101240

SECTION 3

T 4 N R 14 E

TYPE MONUMENT MAG/WASHER

ON SURFACE - ~~BELOW~~ ON

OFFSET ☉ PAVEMENT 0.5' LT : ~~RT~~

9.8' TO LT EDGE PAVEMENT

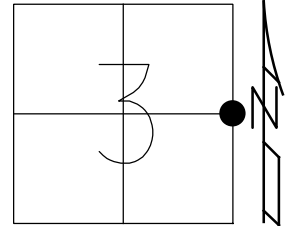
STATION: 316+34

HORZ. DATUM: NAD83-2011

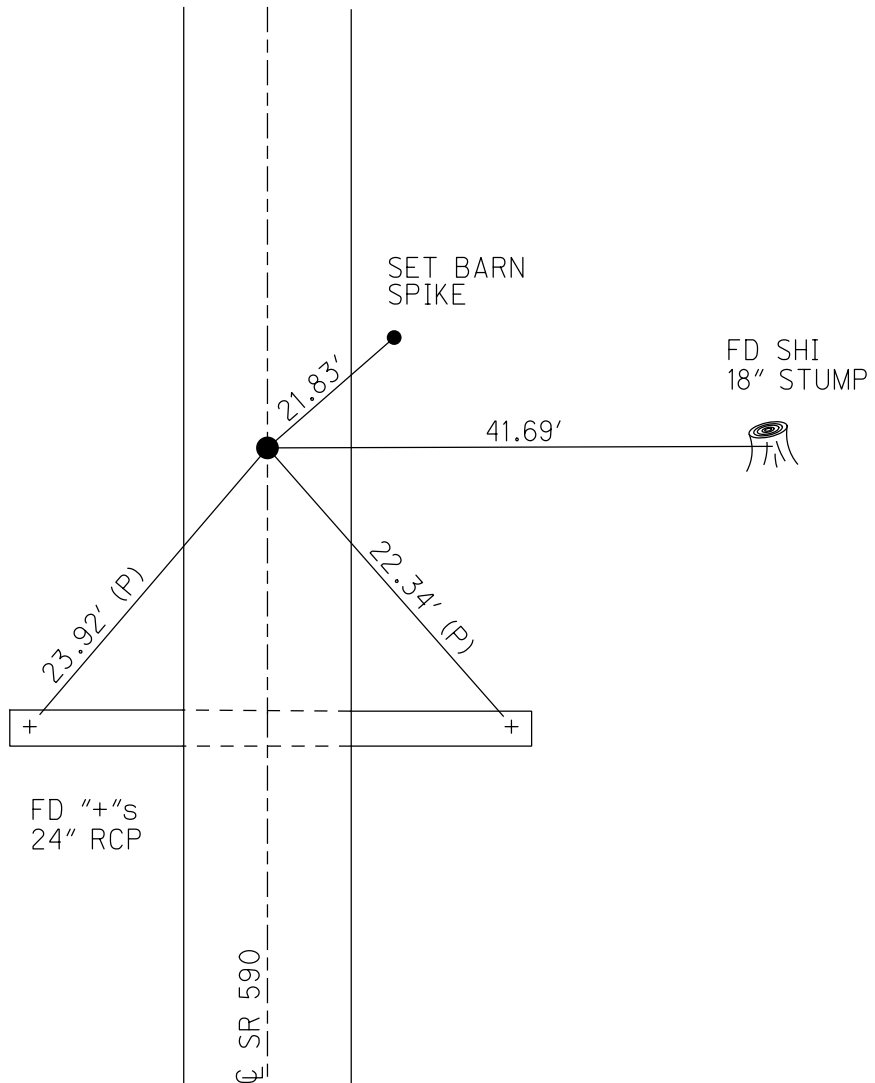
GEOID: NAVD88-2012A

GRID: NORTHING: 607998.665

EASTING: 1769428.592



- RECORD:  
 FD R.R.SPIKE  
 0.3' DOWN  
 5-05-82  
 SET P.K./WASHER  
 6-29-93, RCC  
 FD P.K./WASHER  
 7/19/10, MC  
 SET MAG/WASHER  
 10-20-10, MRC  
 FD MAG/WASHER  
 REF13  
 2-27-18, 4-23-18  
 FD MAG/WASHER  
 1" DOWN  
 10-4-18, JFO  
 FD MAG/WASHER  
 1" DOWN  
 8/21/19, JFO



O.D.O.T. DISTRICT 2 SURVEY OFFICE (USE ONLY)

PERSONNEL

REFERENCE NO. 13 A

SHEET 22 OF 33

NOTES RHOADES DATE 2/27/18  
 H.C. O'DONNELL WEATHER SUNNY  
 R.C. SEAMAN TEMP. 42°

ROUTE SR 590  
 COUNTY SANDUSKY  
 TOWNSHIP JACKSON  
 SECTION 3  
 T 4 N R 14 E

DWG BY MILLER PID 101240

TYPE MONUMENT MAG/WASHER

ON SURFACE - ~~BELOW~~ ON

OFFSET Q PAVEMENT 1.9' ~~LT~~ : RT

8.5' TO LT EDGE PAVEMENT

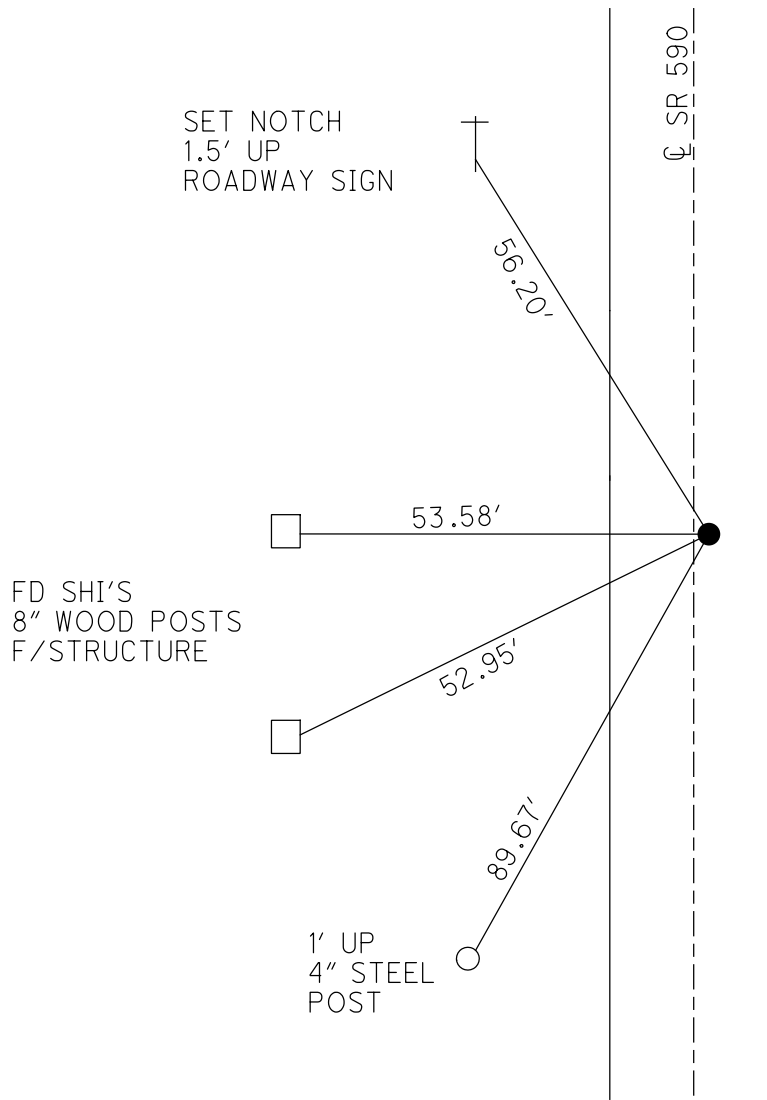
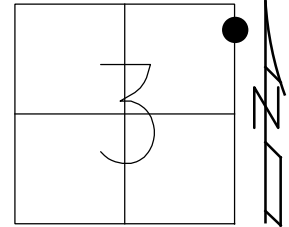
STATION: 345+57

HORZ.DATUM: NAD83-2011

GEOID: NAVD88-2012A

GRID: NORTHING: 610918.756

EASTING: 1769578.287

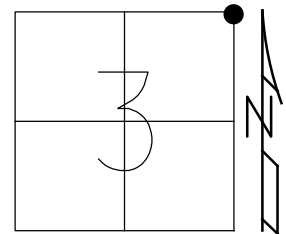


- RECORD:  
 FD NAIL  
 2" DOWN  
 SOURCE UNKNOWN  
 8/11/82  
 SET P.K.NAIL  
 12/09/82  
 SET P.K./WASHER  
 6/29/93, RCC  
 FD P.K./WASHER  
 7/19/10, MC  
 SET MAG/WASHER  
 10/20/10, MC  
 FD MAG/WASHER  
 REFA13  
 2-27-18, 4-23-18  
 FD MAG/WASHER  
 1" DOWN  
 10-4-18, JFO  
 FD MAG/WASHER  
 1" DOWN  
 8/21/19, JFO

O.D.O.T. DISTRICT 2 SURVEY OFFICE (USE ONLY)

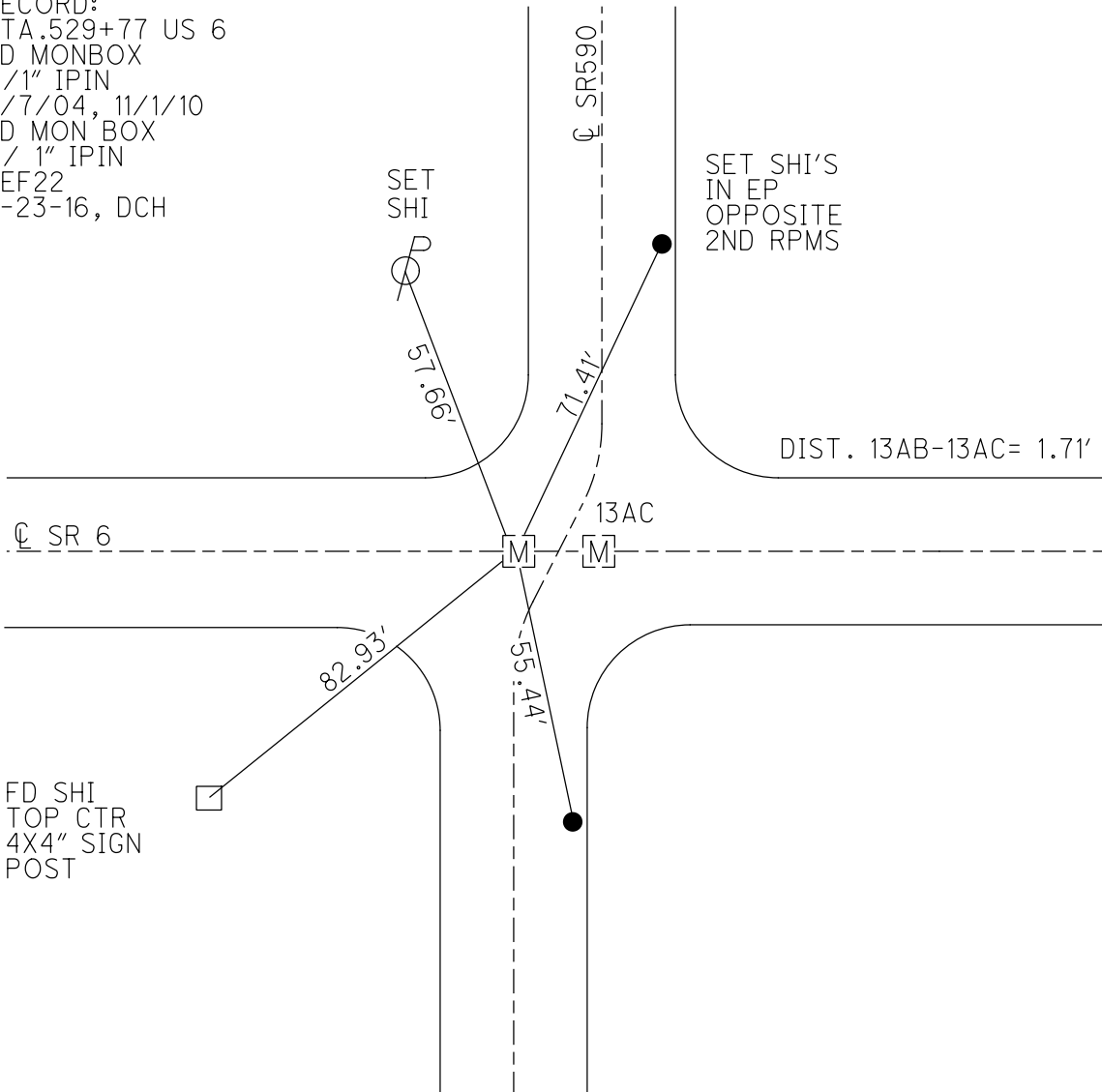
PERSONNEL	REFERENCE NO.	13 AB	SHEET	23	OF	33
NOTES	HOMAN	DATE	7/07/04	ROUTE	SR 590	
H.C.	NUHFER	WEATHER	CLOUDY	COUNTY	SANDUSKY	
R.C.	CANTERBURY	TEMP.	75°	TOWNSHIP	JACKSON	
	ADKINS			SECTION	3	
	HUSS, BARNHISEL			T 4 N	R 14 E	

TYPE MONUMENT MON BOX W/1" IPIN  
 ON SURFACE - ~~BELOW~~ ON  
 LEFT - ☉ PAV'T - RIGHT ON  
12.6' TO RT EDGE PAVEMENT  
 S.L.M. 346+57 ±  
 GRID: NORTHING: 611018.654 EASTING: 1769581.685



RECORD:  
 STA. 529+77 US 6  
 FD MONBOX  
 W/1" IPIN  
 7/7/04, 11/1/10  
 FD MON BOX  
 W/ 1" IPIN  
 REF22  
 6-23-16, DCH

NOTE: US 6: REF 22



**O.D.O.T. DISTRICT 2 SURVEY OFFICE (USE ONLY)**

PERSONNEL \_\_\_\_\_ REFERENCE NO. 13 AC SHEET 24 OF 33

NOTES \_\_\_\_\_ HOMAN \_\_\_\_\_ DATE 07/07/04 ROUTE SR 590  
 H.C. \_\_\_\_\_ NUHFER \_\_\_\_\_ WEATHER CLOUDY COUNTY SANDUSKY  
 R.C. \_\_\_\_\_ CANTERBURY \_\_\_\_\_ TEMP. 75° TOWNSHIP WASHINGTON  
 \_\_\_\_\_ ADKINS \_\_\_\_\_ SECTION 34  
 \_\_\_\_\_ HUSS BARNHEISEL \_\_\_\_\_ T 5 N R 14 E

TYPE MONUMENT MON BOX W/ 1" IPIN

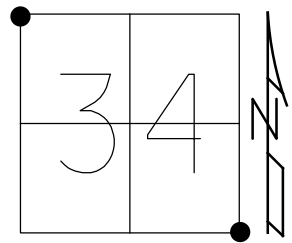
ON SURFACE - ~~BELOW~~ \_\_\_\_\_ ON \_\_\_\_\_

~~LEFT~~ - Q PAV'T - ~~RIGHT~~ \_\_\_\_\_ ON \_\_\_\_\_

12.6' TO RT EDGE PAVEMENT

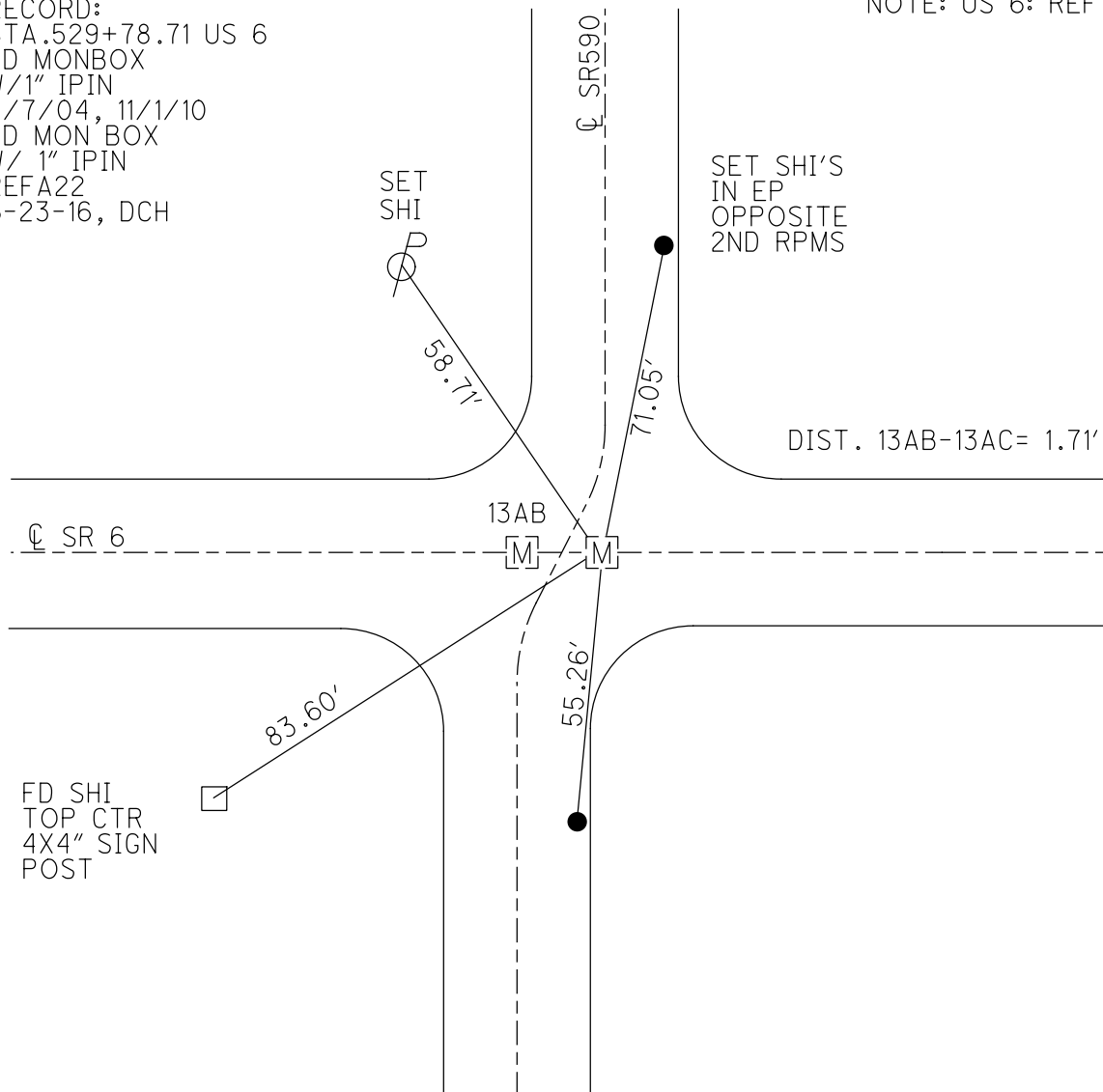
S.L.M. 346+59 ±

GRID: NORTHING: 611018.679 EASTING: 1769583.390



RECORD:  
 STA. 529+78.71 US 6  
 FD MONBOX  
 W/1" IPIN  
 7/7/04, 11/1/10  
 FD MON BOX  
 W/ 1" IPIN  
 REFA22  
 6-23-16, DCH

NOTE: US 6: REF 22 A





O.D.O.T. DISTRICT 2 SURVEY OFFICE (USE ONLY)

PERSONNEL

REFERENCE NO. 13 B

SHEET 25 OF 33

NOTES RHOADES DATE 2/27/18

ROUTE SR 590

H.C. O'DONNELL WEATHER SUNNY

COUNTY SANDUSKY

R.C. SEAMAN TEMP. 42°

TOWNSHIP WASHINGTON

DWG BY MILLER PID 101240

SECTION 34

T 5 N R 14 E

TYPE MONUMENT MAG/WASHER

ON SURFACE - ~~BELOW~~ ON

OFFSET Q PAVEMENT 10.5' LT : ~~RT~~

ON TO LT EDGE PAVEMENT

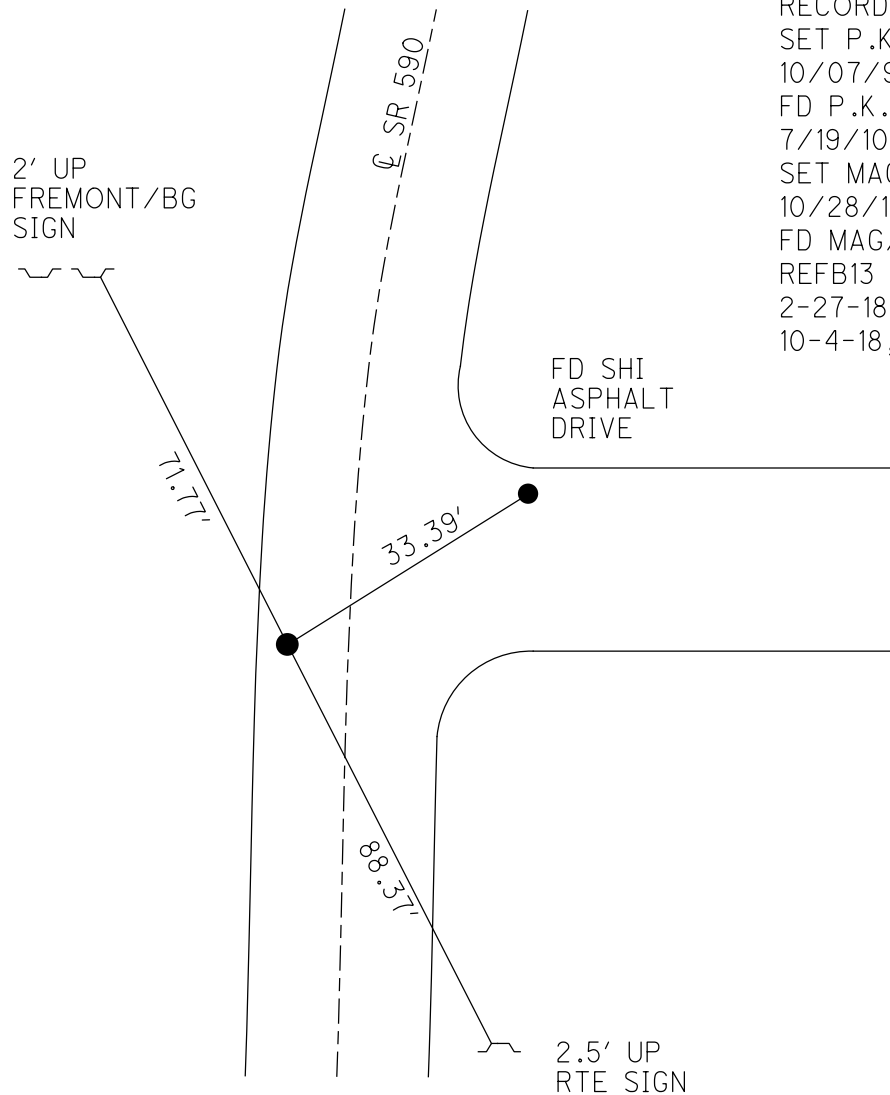
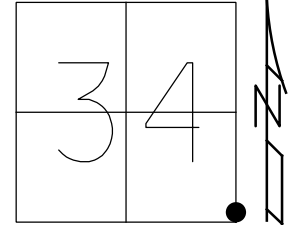
STATION: 349+11

HORZ.DATUM: NAD83-2011

GEOID: NAVD88-2012A

GRID: NORTHING: 611235.949

EASTING: 1769592.685



RECORD: P.I.  
SET P.K./WASHER  
10/07/96, MB  
FD P.K./WASHER  
7/19/10  
SET MAG/WASHER  
10/28/10, MC  
FD MAG/WASHER  
REFB13  
2-27-18, 4-23-18  
10-4-18, JFO

O.D.O.T. DISTRICT 2 SURVEY OFFICE (USE ONLY)

PERSONNEL

REFERENCE NO. 13 C

SHEET 26 OF 33

NOTES RHOADES

DATE 2/27/18

ROUTE SR 590

H.C. O'DONNELL

WEATHER SUNNY

COUNTY SANDUSKY

R.C. SEAMAN

TEMP. 42°

TOWNSHIP WASHINGTON

DWG BY MILLER PID 101240

SECTION 34

T 5 N R 14 E

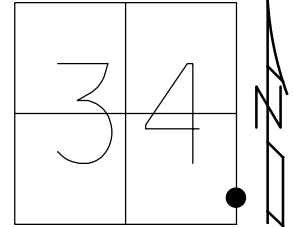
TYPE MONUMENT MAG/WASHER

ON SURFACE - ~~BELOW~~ ON

OFFSET CL PAVEMENT 11.1' ~~LT~~ : RT

0.6' TO RT EDGE PAVEMENT

STATION: 353+21



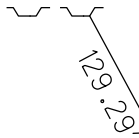
HORZ.DATUM: NAD83-2011

GEOID: NAVD88-2012A

GRID: NORTHING: 611623.630

EASTING: 1769732.983

FD NOTCH  
1.5' UP  
SIGN

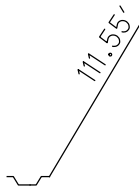


SR 590

RECORD: P.I.  
FD P.K./WASHER  
ATOP P.K./WASHER  
ATOP R.R.SPIKE  
SET P.K./WASHER  
10/07/96, MB  
FD P.K./WASHER  
7/19/10  
SET MAG/WASHER  
10/28/10, MC  
FD MAG/WASHER  
REFC13  
2-27-18, 4-23-18  
10-4-18, JFO

SET BARN  
SPIKE  
5.88'

FD NOTCH  
1.5' UP  
SIGN



O.D.O.T. DISTRICT 2 SURVEY OFFICE (USE ONLY)

PERSONNEL

REFERENCE NO. 15

SHEET 27 OF 33

NOTES RHOADES

DATE 2/27/18

ROUTE SR 590

H.C. O'DONNELL

WEATHER SUNNY

COUNTY SANDUSKY

R.C. SEAMAN

TEMP. 49°

TOWNSHIP WASHINGTON

SECTION 34

DWG BY MILLER PID 101240

T 5 N R 14 E

TYPE MONUMENT MAG/WASHER

ON SURFACE - ~~BELOW~~ ON

OFFSET CL PAVEMENT 2.6' LT : ~~RT~~

7.5' TO LT EDGE PAVEMENT

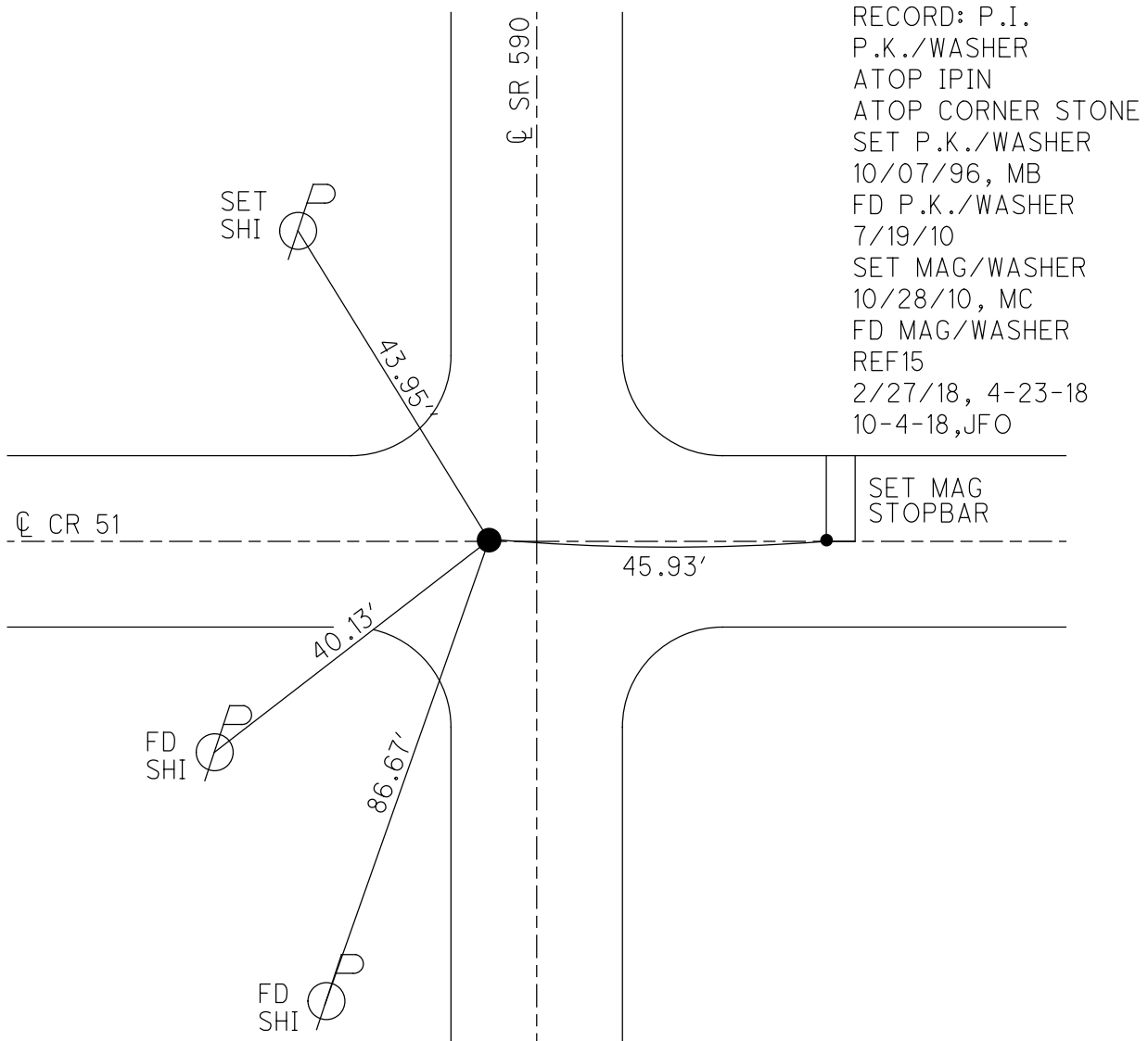
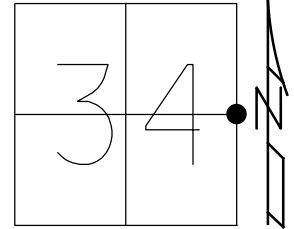
STATION: 373+60

HORZ.DATUM: NAD83-2011

GEOID: NAVD88-2012A

GRID: NORTHING: 613658.454

EASTING: 1769827.183



RECORD: P.I.  
P.K./WASHER  
ATOP IPIN  
ATOP CORNER STONE  
SET P.K./WASHER  
10/07/96, MB  
FD P.K./WASHER  
7/19/10  
SET MAG/WASHER  
10/28/10, MC  
FD MAG/WASHER  
REF15  
2/27/18, 4-23-18  
10-4-18, JFO

SET MAG  
STOPBAR

O.D.O.T. DISTRICT 2 SURVEY OFFICE (USE ONLY)

PERSONNEL

REFERENCE NO. 16

SHEET 28 OF 33

NOTES RHOADES DATE 2/27/18

H.C. O'DONNELL WEATHER SUNNY

R.C. SEAMAN TEMP. 42°

ROUTE SR 590

COUNTY SANDUSKY

TOWNSHIP WASHINGTON

SECTION 34

T 5 N R 14 E

DWG BY MILLER PID 101240

TYPE MONUMENT MAG/WASHER

ON SURFACE - ~~BELOW~~ ON

OFFSET  $\varnothing$  PAVEMENT 3.4' LT : ~~RT~~

6.6' TO LT EDGE PAVEMENT

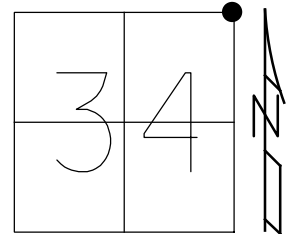
STATION: 400+10

HORZ.DATUM: NAD83-2011

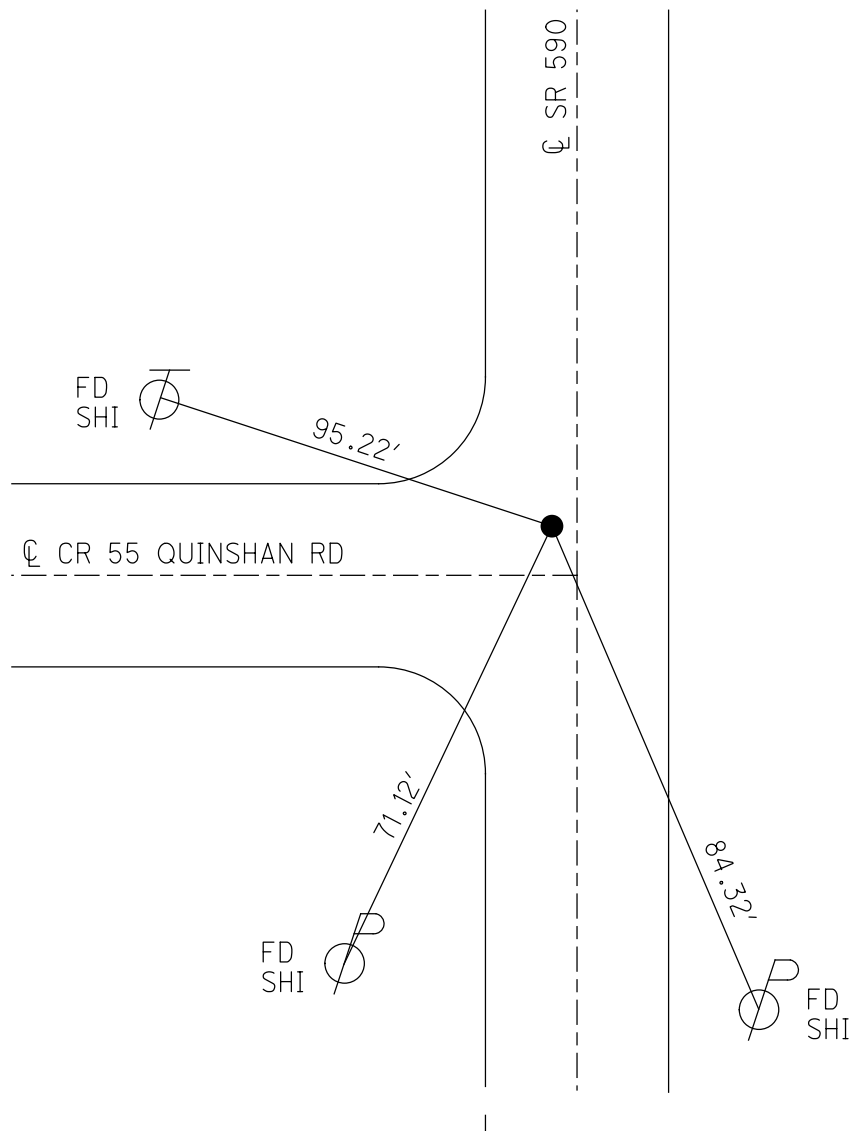
GEOID: NAVD88-2012A

GRID: NORTHING: 616304.207

EASTING: 1769934.059



RECORD: P.I.  
 P.K./WASHER  
 ATOP P.K./WASHER  
 ATOP R.R.SPIKE IN HUB  
 SET P.K./WASHER  
 10/07/96, MB  
 FD P.K./WASHER  
 7/19/10  
 SET MAG/WASHER  
 10/28/10, MC  
 FD MAG/WASHER  
 REF16  
 2-27-18, 4-23-18  
 10-4-18, JFO



O.D.O.T. DISTRICT 2 SURVEY OFFICE (USE ONLY)

PERSONNEL

REFERENCE NO. 17

SHEET 29 OF 33

NOTES RHOADES DATE 2/27/18

H.C. O'DONNELL WEATHER SUNNY

R.C. SEAMAN TEMP. 42°

ROUTE SR 590

COUNTY SANDUSKY

TOWNSHIP WASHINGTON

SECTION 27

T 5 N R 14 E

DWG BY MILLER PID 101240

TYPE MONUMENT MAG/WASHER

ON SURFACE - ~~BELOW~~ ON

OFFSET  $\odot$  PAVEMENT 2.2' LT : ~~RT~~

9' TO LT EDGE PAVEMENT

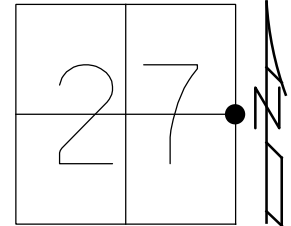
STATION: 426+38

HORZ.DATUM: NAD83-2011

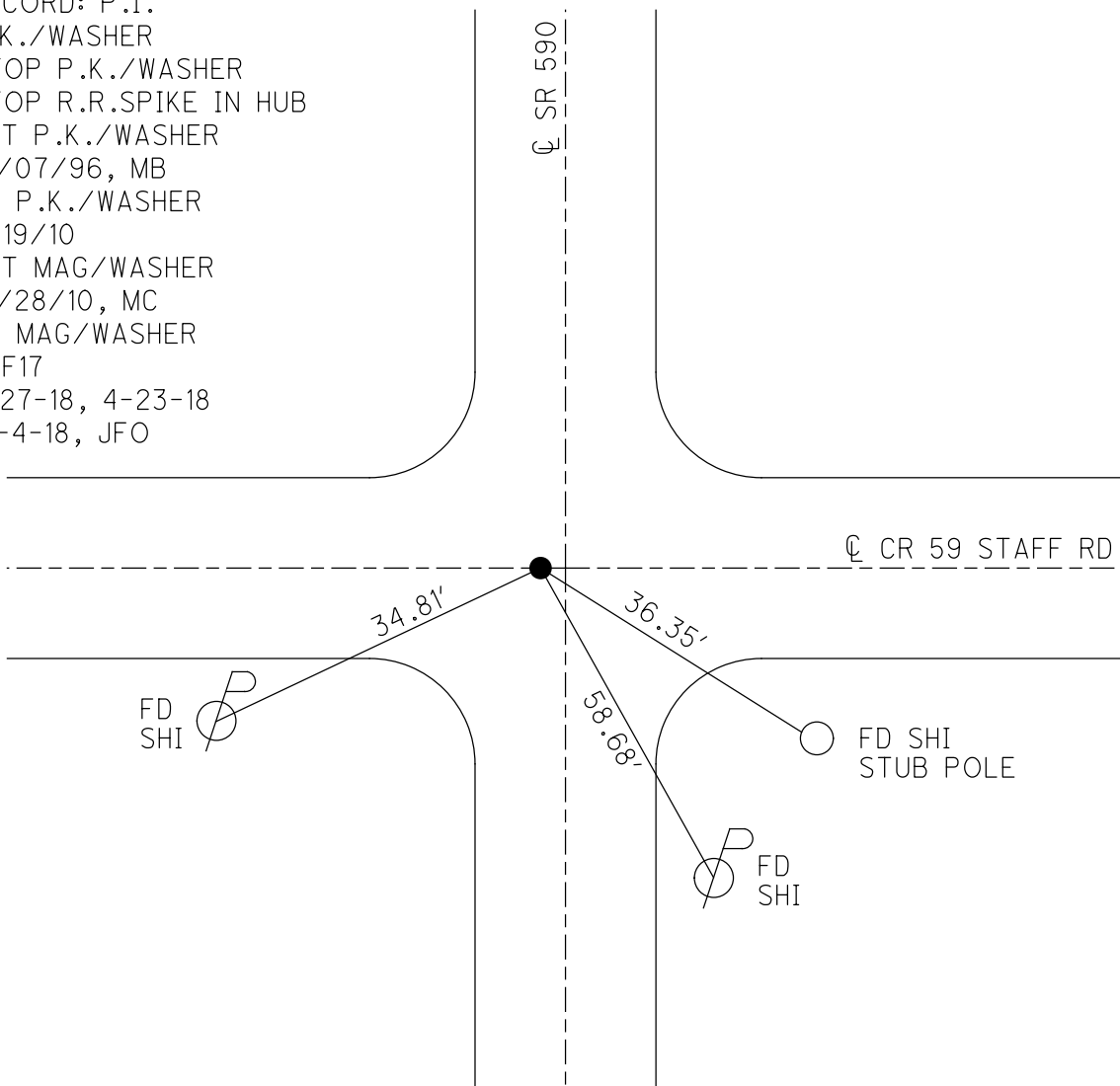
GEOID: NAVD88-2012A

GRID: NORTHING: 618927.742

EASTING: 1770018.902



RECORD: P.I.  
 P.K./WASHER  
 ATOP P.K./WASHER  
 ATOP R.R.SPIKE IN HUB  
 SET P.K./WASHER  
 10/07/96, MB  
 FD P.K./WASHER  
 7/19/10  
 SET MAG/WASHER  
 10/28/10, MC  
 FD MAG/WASHER  
 REF17  
 2-27-18, 4-23-18  
 10-4-18, JFO



O.D.O.T. DISTRICT 2 SURVEY OFFICE (USE ONLY)

PERSONNEL

REFERENCE NO. 18

SHEET 30 OF 33

NOTES RHOADES DATE 2/27/18  
 H.C. O'DONNELL WEATHER SUNNY  
 R.C. SEAMAN TEMP. 42°

ROUTE SR 590  
 COUNTY SANDUSKY  
 TOWNSHIP JACKSON  
 SECTION 27

DWG BY MILLER PID 101240

T 5 N R 14 E

TYPE MONUMENT MAG/WASHER

ON SURFACE - ~~BELOW~~ ON

OFFSET 4.6' LT : ~~RT~~  
6' TO LT EDGE PAVEMENT

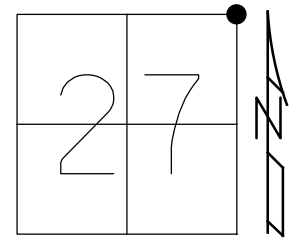
STATION: 452+93

HORZ. DATUM: NAD83-2011

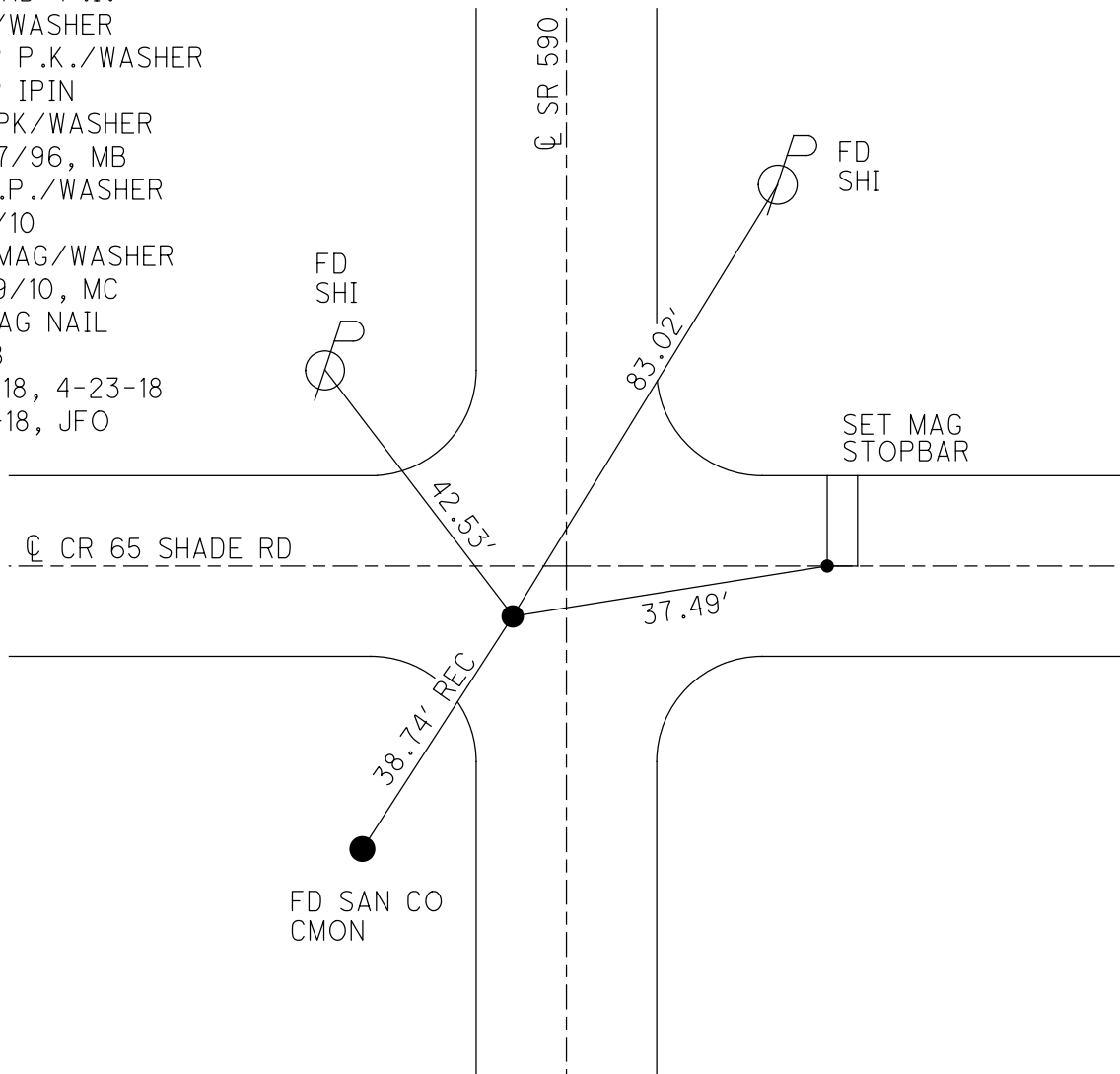
GEOID: NAVD88-2012A

GRID: NORTHING: 621577.863

EASTING: 1770113.974



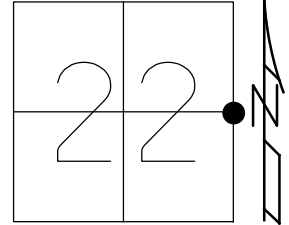
- RECORD: P.I.
- P.K./WASHER
- ATOP P.K./WASHER
- ATOP IPIN
- SET PK/WASHER
- 10/07/96, MB
- FD P.P./WASHER
- 7/19/10
- SET MAG/WASHER
- 10/29/10, MC
- FD MAG NAIL
- REF18
- 2-17-18, 4-23-18
- 10-4-18, JFO



O.D.O.T. DISTRICT 2 SURVEY OFFICE (USE ONLY)

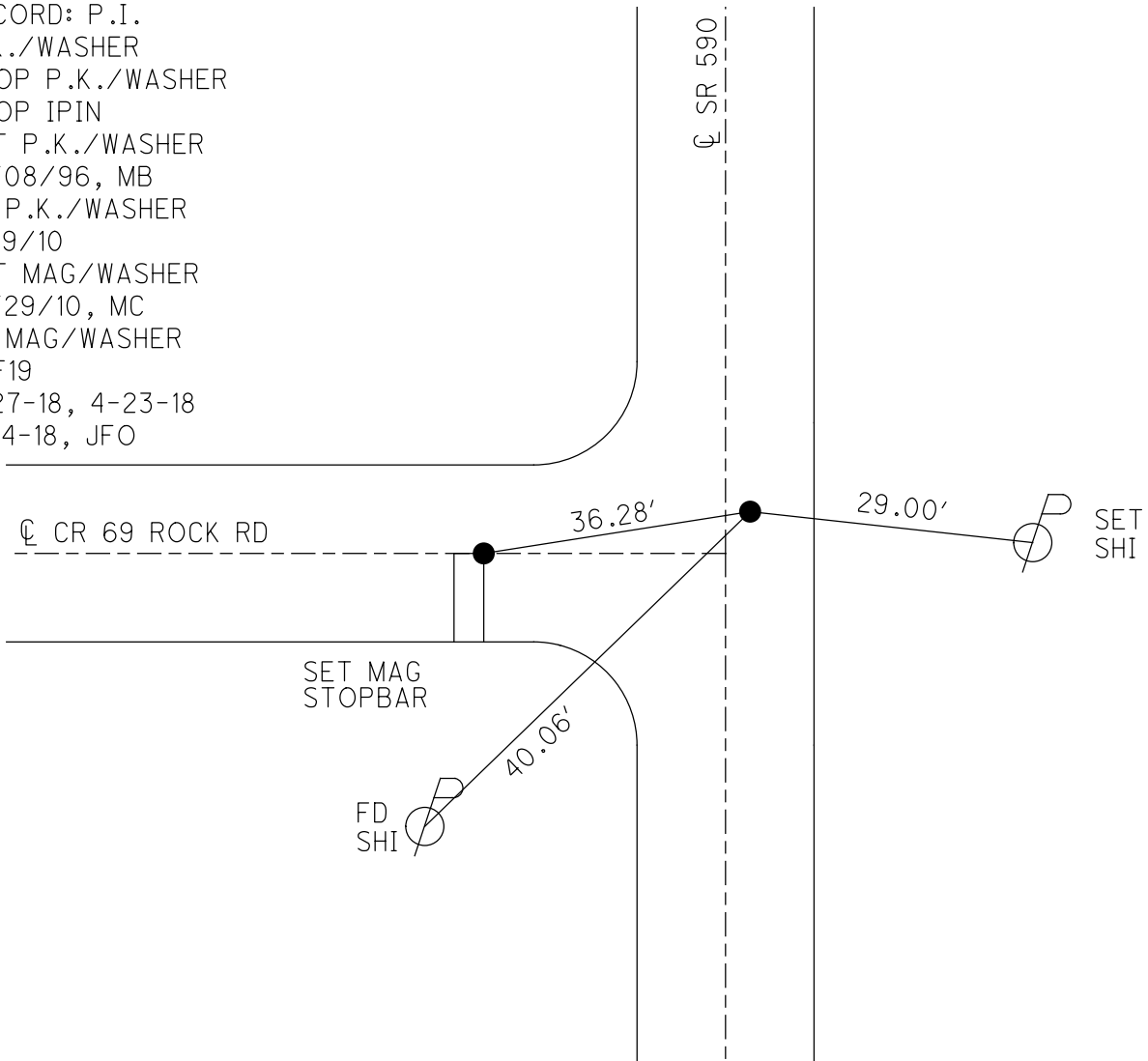
PERSONNEL \_\_\_\_\_ REFERENCE NO. 19 SHEET 31 OF 33  
 NOTES RHOADES DATE 2/27/18 ROUTE SR 590  
 H.C. O'DONNELL WEATHER SUNNY COUNTY SANDUSKY  
 R.C. SEAMAN TEMP. 42° TOWNSHIP WASHINGTON  
 DWG BY MILLER PID 101240 SECTION 22  
 T 5 N R 14 E

TYPE MONUMENT MAG/WASHER  
 ON SURFACE - ~~BELOW~~ ON  
 OFFSET  $\odot$  PAVEMENT 1.3' ~~±~~ : RT  
9.1' TO RT EDGE PAVEMENT  
 STATION: 479+42



HORZ. DATUM: NAD83-2011 GEOID: NAVD88-2012A  
 GRID: NORTHING: 624222.699 EASTING: 1770218.554

RECORD: P.I.  
 P.K./WASHER  
 ATOP P.K./WASHER  
 ATOP IPIN  
 SET P.K./WASHER  
 10/08/96, MB  
 FD P.K./WASHER  
 7/19/10  
 SET MAG/WASHER  
 10/29/10, MC  
 FD MAG/WASHER  
 REF19  
 2-27-18, 4-23-18  
 10-4-18, JFO



O.D.O.T. DISTRICT 2 SURVEY OFFICE (USE ONLY)

PERSONNEL

REFERENCE NO. 19 A

SHEET 32 OF 33

NOTES RHOADES

DATE 2/27/18

ROUTE SR 590

H.C. O'DONNELL

WEATHER SUNNY

COUNTY SANDUSKY

R.C. SEAMAN

TEMP. 42°

TOWNSHIP WASHINGTON

SECTION 22

DWG BY MILLER PID 101240

T 5 N R 14 E

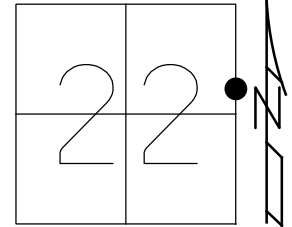
TYPE MONUMENT MAG/WASHER

ON SURFACE - ~~BELOW~~ ON

OFFSET 7.4' Q PAVEMENT 2.9' LT : RT

7.4' TO RT EDGE PAVEMENT

STATION: 484+18



HORIZ.DATUM: NAD83-2011

GEOID: NAVD88-2012A

GRID: NORTHING: 624698.696

EASTING: 1770238.024

BARN  
FD "X" CUT IN  
STONE FDN



54.27'

32.56'

79.28'

87.48'

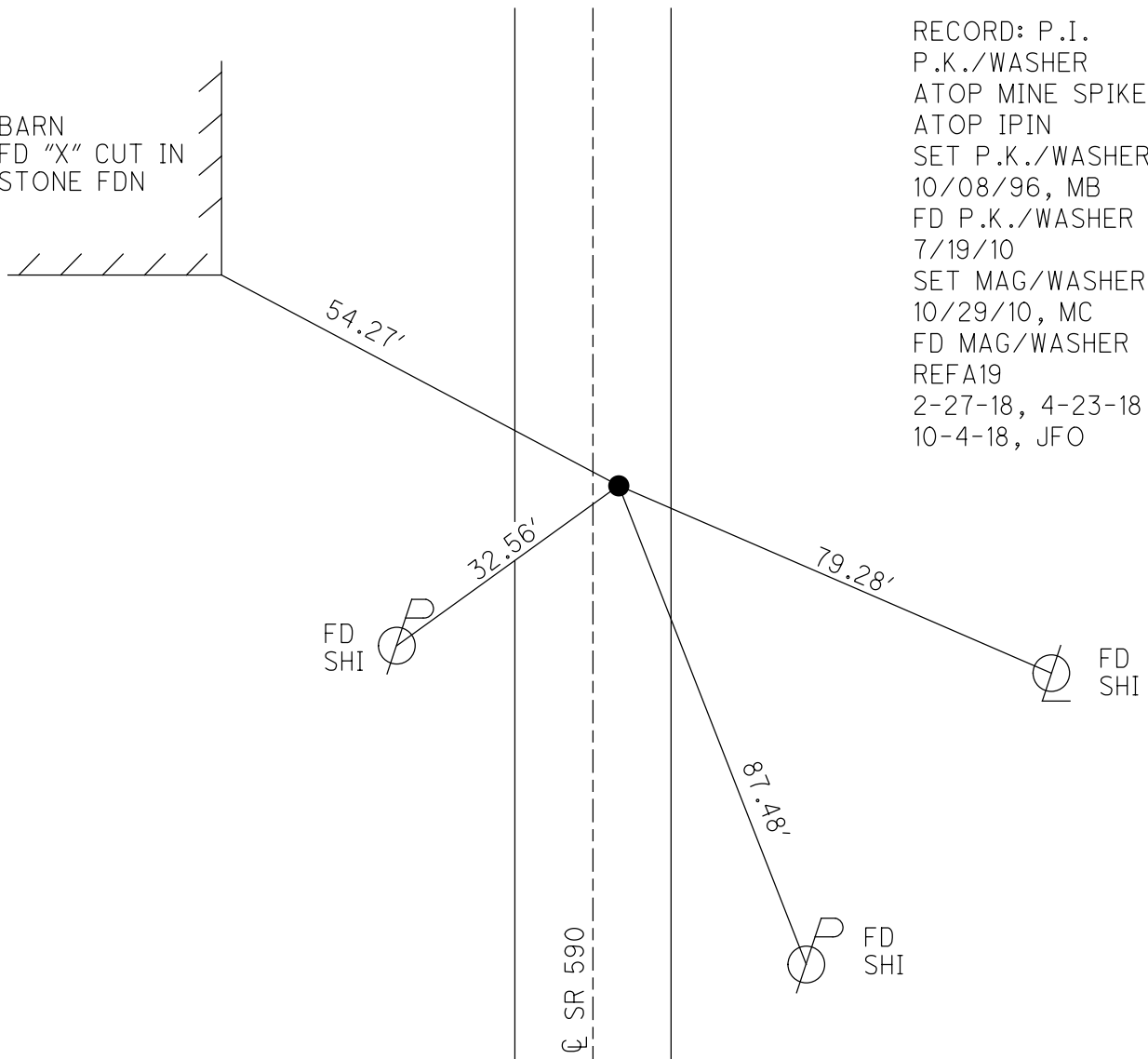
FD  
SHI

FD  
SHI

FD  
SHI

Q SR 590

RECORD: P.I.  
P.K./WASHER  
ATOP MINE SPIKE  
ATOP IPIN  
SET P.K./WASHER  
10/08/96, MB  
FD P.K./WASHER  
7/19/10  
SET MAG/WASHER  
10/29/10, MC  
FD MAG/WASHER  
REFA19  
2-27-18, 4-23-18  
10-4-18, JFO





O.D.O.T. DISTRICT 2 SURVEY OFFICE (USE ONLY)

PERSONNEL

REFERENCE NO. 20

SHEET 33 OF 33

NOTES RHOADES

DATE 2/27/18

ROUTE SR 590

H.C. O'DONNELL

WEATHER SUNNY

COUNTY SANDUSKY

R.C. SEAMAN

TEMP. 42°

TOWNSHIP WASHINGTON

DWG BY MILLER PID 101240

SECTION 22

T 5 N R 14 E

TYPE MONUMENT P.K./WASHER

~~ON SURFACE~~ - BELOW 3"

OFFSET  $\phi$  PAVEMENT 3.3' LT : ~~RT~~

7' TO LT EDGE PAVEMENT

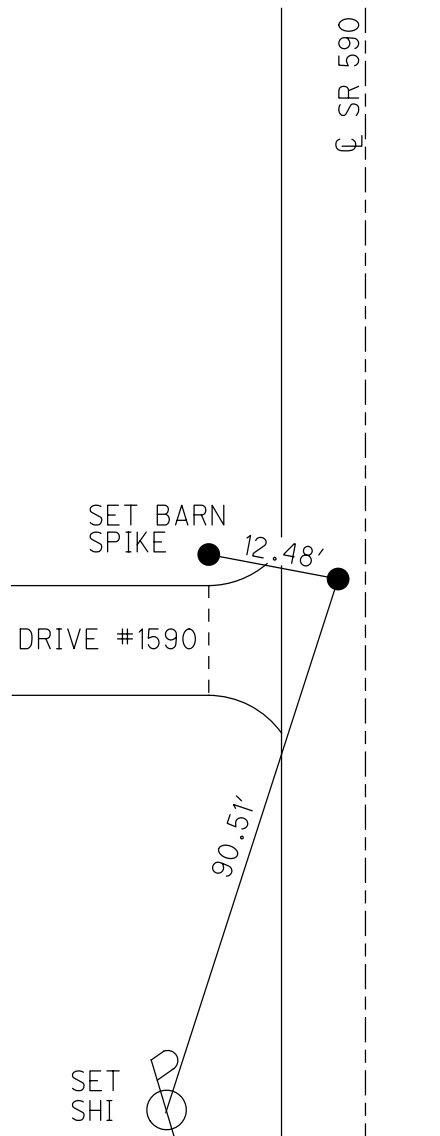
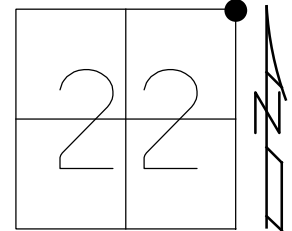
STATION: 504+67

HORIZ.DATUM: NAD83-2011

GEOID: NAVD88-2012A

GRID: NORTHING: 626741.735

EASTING: 1770323.292



RECORD: P.I.  
 P.K./WASHER  
 ATOP P.K./WASHER  
 ATOP IPIN  
 SET PK/WASHER  
 10/08/96, MB  
 FD P.K./WASHER  
 7/19/10  
 SET MAG/WASHER  
 10/29/10, MC  
 FD P.K./WASHER  
 3" DOWN  
 REF20  
 2-27-18, 4-23-18  
 10-4-18, JFO

O.D.O.T. DISTRICT 2 SURVEY OFFICE (USE ONLY)

PERSONNEL \_\_\_\_\_ REFERENCE NO. 21 SHEET 34 OF 34  
 NOTES RHOADES DATE 8/9/23 ROUTE US 20  
 H.C. AUBLE WEATHER SUNNY COUNTY SANDUSKY  
 R.C. NIESE TEMP. 79° TOWNSHIP WASHINGTON  
 \_\_\_\_\_ ASTON \_\_\_\_\_ SECTION 15  
 DWG BY RHOADES PID 110021 T 5 N R 14 E

TYPE MONUMENT MAG/WASHER

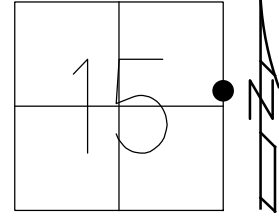
ON SURFACE - ~~BELOW~~ ON \_\_\_\_\_

OFFSET  $\odot$  PAVEMENT 16.1' LT : ~~RT~~  
2.9' TO S EDGE OF BERM

STATION: 531+70 ±

HORZ.DATUM: NAD83 2011 GEOID: NAVD88 2018

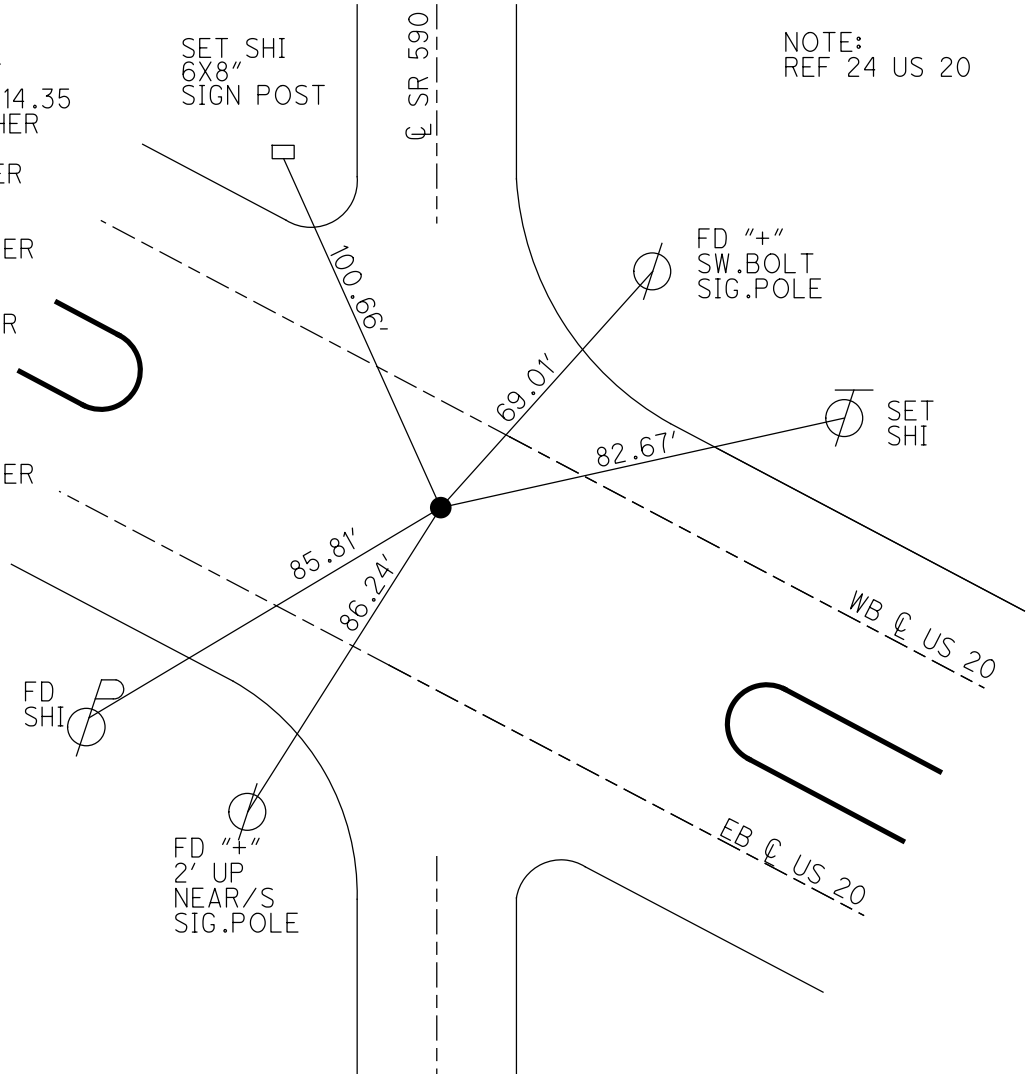
GRID: NORTHING: 629631.023 EASTING: 1770438.290



RECORD: P.I.  
 $\Delta = 0^\circ 10.3' \text{ LT}$   
 1946 PLAN 63+14.35  
 SET P.K./WASHER  
 6/29/00, MDB  
 FD P.K./WASHER  
 REF24  
 7/12/11, RJL  
 SET MAG/WASHER  
 FINREF24  
 8/21/13, SDC  
 FD MAG/WASHER  
 REFA21  
 3/28/16, JFO  
 FD MAG SHANK  
 REF24  
 3/15/23, TDN  
 SET MAG/WASHER  
 8/9/23, DSA

SET SHI  
 6X8"  
 SIGN POST

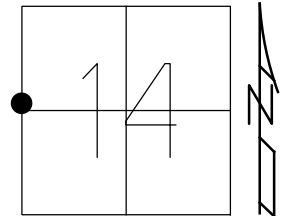
NOTE:  
 REF 24 US 20



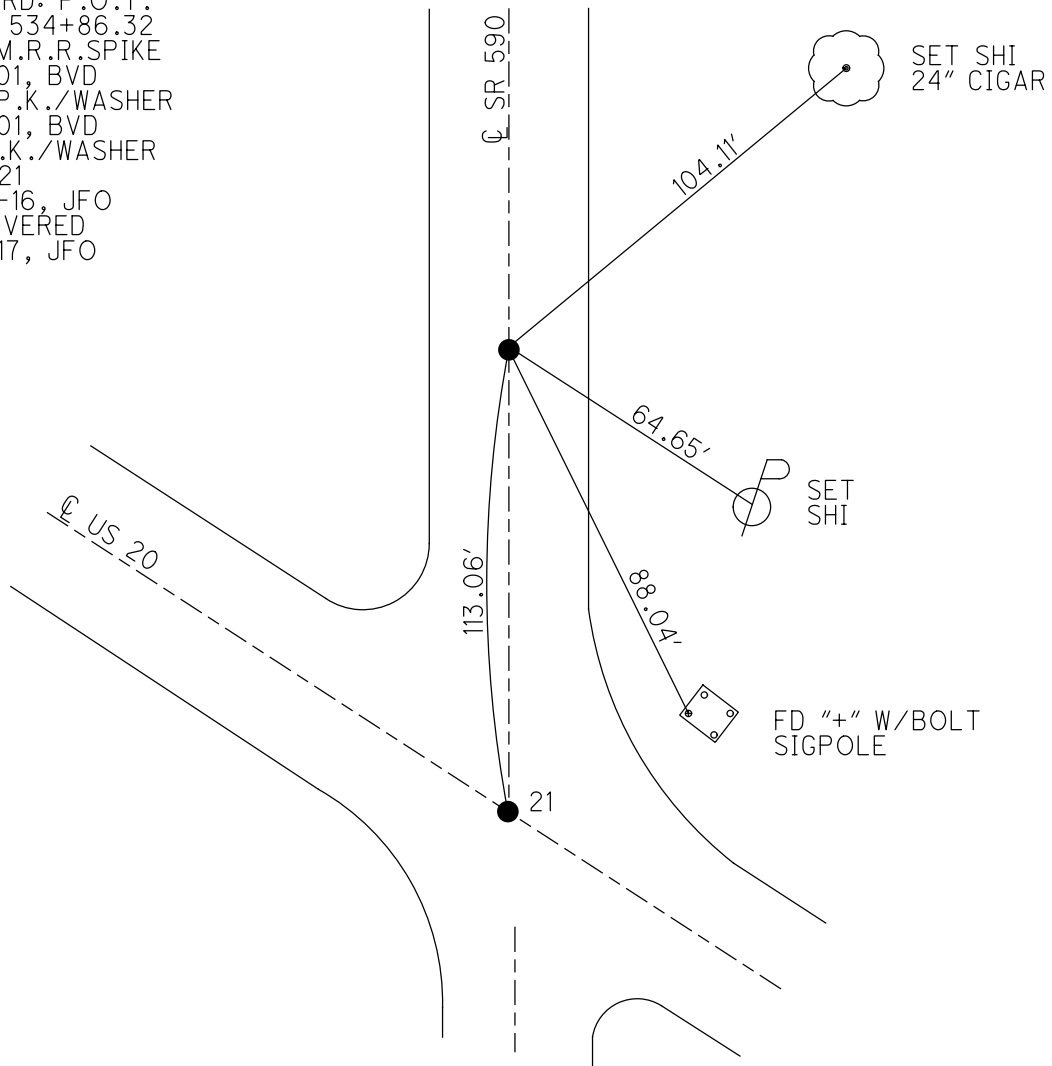
O.D.O.T. DISTRICT 2 SURVEY OFFICE (USE ONLY)

PERSONNEL \_\_\_\_\_ REFERENCE NO. 21 A SHEET 1 OF 15  
 NOTES RHOADES DATE 7/20/17 ROUTE SR 590  
 H.C. O'DONNELL WEATHER SUNNY COUNTY SANDUSKY  
 R.C. POORE TEMP. 82° TOWNSHIP WASHINGTON  
 \_\_\_\_\_ SECTION 14  
 \_\_\_\_\_ T 5 N R 14 E

TYPE MONUMENT P.K./WASHER  
 ON SURFACE - ~~BELOW~~ ON  
 LEFT - ☉ PAV'T - RIGHT ON  
13.1' TO RT EDGE PAVEMENT  
 S.L.M. 534+86.88  
 GRID: NORTHING: 629743.933 EASTING: 1770443.057



RECORD: P.O.T.  
 STA. 534+86.32  
 FD SM.R.R.SPIKE  
 7-5-01, BVD  
 SET P.K./WASHER  
 9-4-01, BVD  
 FD P.K./WASHER  
 REFB21  
 3-28-16, JFO  
 UNCOVERED  
 11-8-17, JFO

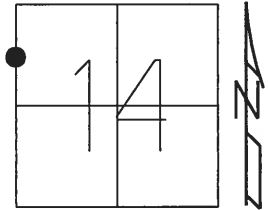


O.D.O.T. DISTRICT 2 SURVEY OFFICE (USE ONLY)

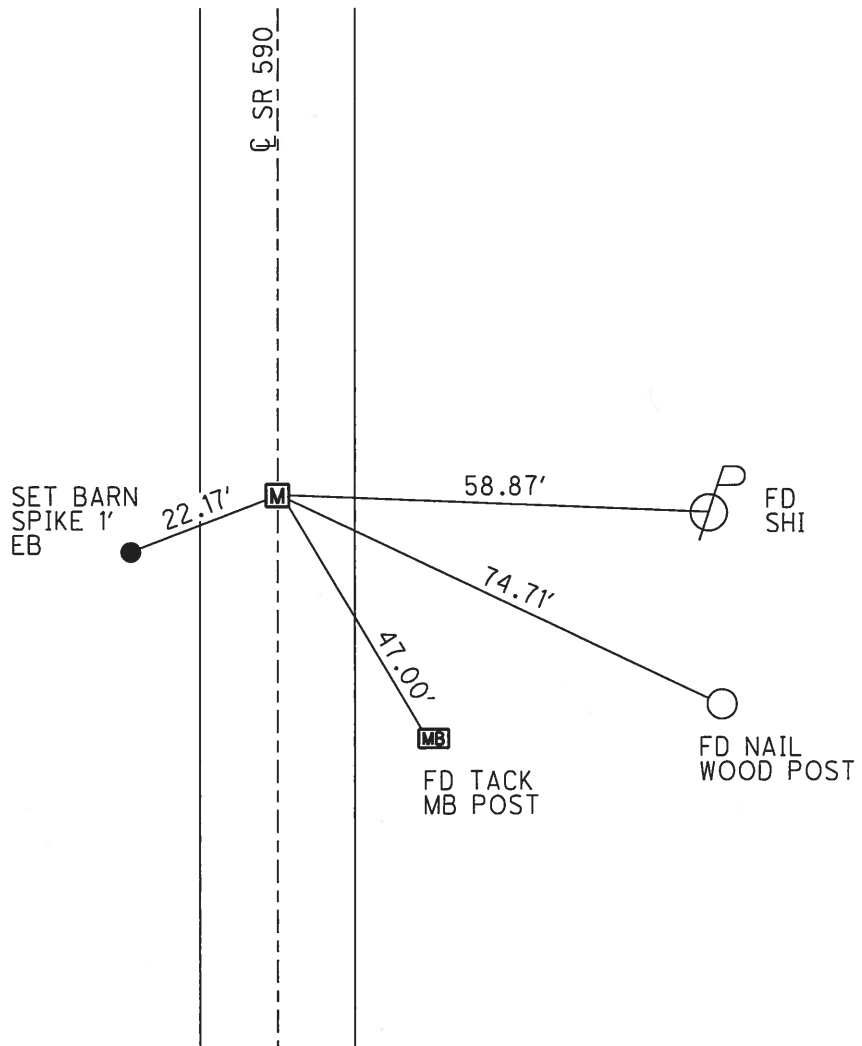
PERSONNEL \_\_\_\_\_ REFERENCE NO. 21 C SHEET 3 OF 16

NOTES	<u>RHOADES</u>	DATE	<u>2/28/18</u>	ROUTE	<u>SR 590</u>
H.C.	<u>O'DONNELL</u>	WEATHER	<u>CLOUDY</u>	COUNTY	<u>SANDUSKY</u>
R.C.	<u>AUBLE</u>	TEMP.	<u>57°</u>	TOWNSHIP	<u>WASHINGTON</u>
	<u>SEAMAN</u>			SECTION	<u>14</u>
				T	<u>5 N</u>
				R	<u>14 E</u>

TYPE MONUMENT MONBOX W/ 1" IPIN  
 ON SURFACE - ~~BELOW~~ ON  
 LEFT - ☉ PAV'T - RIGHT ON  
12.5' TO LT EDGE PAVEMENT  
 S.L.M. 549+73.25  
 GRID: NORTHING: 631229.643 EASTING: 1770506.843



RECORD: P.I.  
 1986  
 $\Delta = 0^\circ 26' 30''$  LT  
 STA. 549+73.25  
 FD MONBOX  
 7-5-01, BVD  
 FD MONBOX  
 COVERED  
 W/ASPHALT  
 REFC21  
 SHOT "+"  
 3-28-16, JFO  
 SET STRATLERS  
 2-28-18, JFO

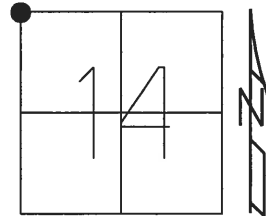


O.D.O.T. DISTRICT 2 SURVEY OFFICE (USE ONLY)

PERSONNEL \_\_\_\_\_ REFERENCE NO. 22 SHEET 4 OF 16

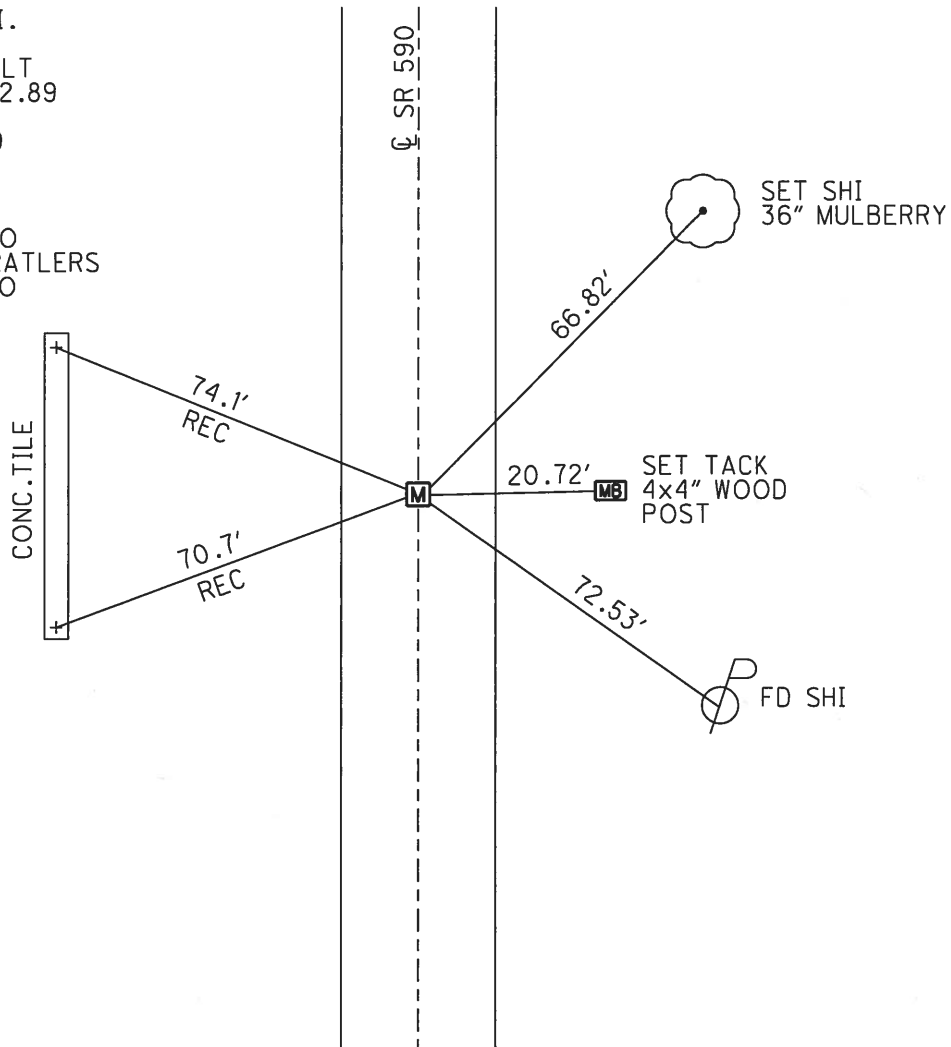
NOTES RHOADES DATE 2/28/18 ROUTE SR 590  
 H.C. O'DONNELL WEATHER CLOUDY COUNTY SANDUSKY  
 R.C. AUBLE TEMP. 49° TOWNSHIP WASHINGTON  
 \_\_\_\_\_ SEAMAN \_\_\_\_\_ SECTION 14  
 T 5 N R 14 E

TYPE MONUMENT MONBOX W/ 1" IPIN  
 ON SURFACE - ~~BELOW~~ ON  
 LEFT - ☉ PAV'T - RIGHT ON  
12.2' TO LT EDGE PAVEMENT  
 S.L.M. 558+93.81



GRID: NORTHING: 632148.503 EASTING: 1770539.121

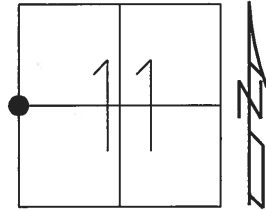
RECORD: P.I.  
 1986  
 $\Delta = 0^{\circ} 04' \text{ LT}$   
 STA. 558+92.89  
 FD MONBOX  
 7-5-01, BVD  
 FD MONBOX  
 W/ 1" IPIN  
 REF22  
 3-28-16, JFO  
 PLACED STRATLERS  
 2-28-18, JFO



O.D.O.T. DISTRICT 2 SURVEY OFFICE (USE ONLY)

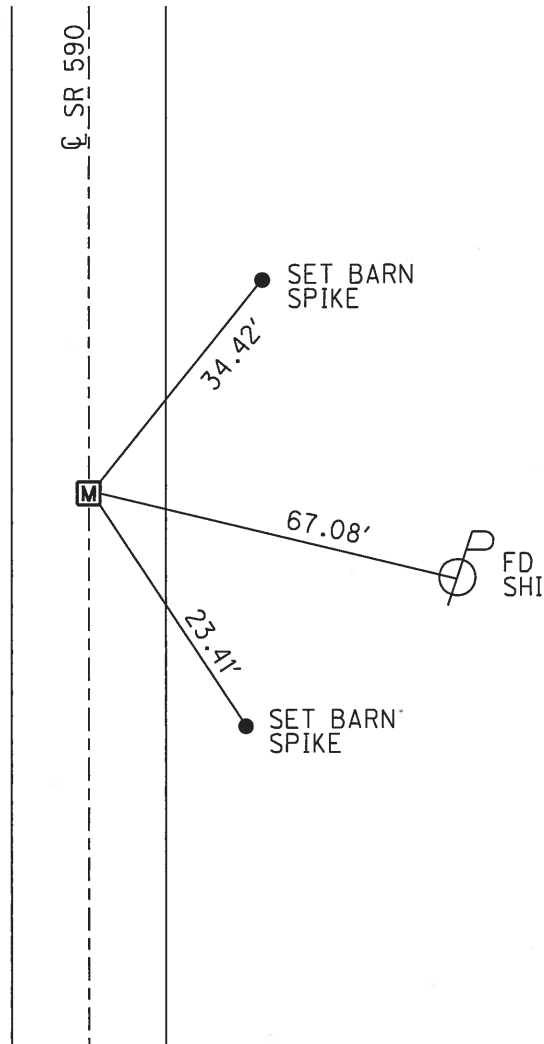
PERSONNEL \_\_\_\_\_ REFERENCE NO. 22 A SHEET 5 OF 16  
 NOTES RHOADES DATE 2/28/18 ROUTE SR 590  
 H.C. O'DONNELL WEATHER CLOUDY COUNTY SANDUSKY  
 R.C. AUBLE TEMP. 49° TOWNSHIP WASHINGTON  
 \_\_\_\_\_ SEAMAN \_\_\_\_\_ SECTION 11  
 \_\_\_\_\_ T 5 N R 14 E

TYPE MONUMENT MONBOX W/ 1" IPIN  
 ON SURFACE - ~~BELOW~~ ON  
 LEFT - ☉ PAV'T - RIGHT ON  
12.4' TO RT EDGE PAVEMENT  
 S.L.M. 585+42.16



GRID: NORTHING: 634795.322 EASTING: 1770629.308

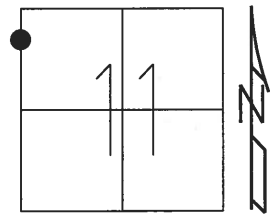
RECORD: P.I.  
 1986  
 $\Delta = 0^{\circ}15''$  RT  
 STA. 585+41.3  
 FD MONBOX  
 7-5-01, BVD  
 FD MONBOX  
 W/ 1" IPIN  
 REFA22  
 3-28-16, JFO  
 SET STRATLERS  
 2-28-18, JFO



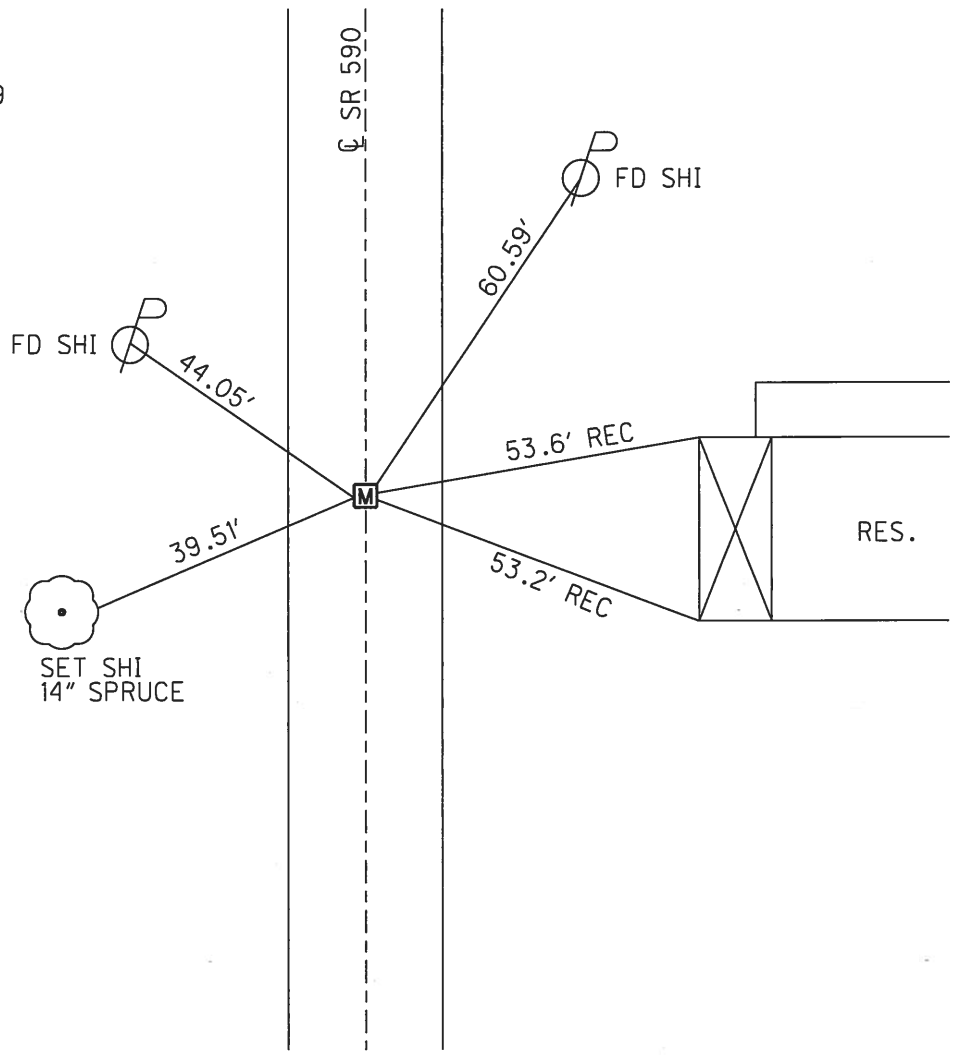
O.D.O.T. DISTRICT 2 SURVEY OFFICE (USE ONLY)

PERSONNEL \_\_\_\_\_ REFERENCE NO. 23 SHEET 6 OF 16  
 NOTES RHOADES DATE 2/28/18 ROUTE SR 590  
 H.C. O'DONNELL WEATHER CLOUDY COUNTY SANDUSKY  
 R.C. AUBLE TEMP. 49° TOWNSHIP WASHINGTON  
 \_\_\_\_\_ SEAMAN \_\_\_\_\_ SECTION 11  
 T 5 N R 14 E

TYPE MONUMENT MONBOX W/ 1" IPIN  
 ON SURFACE - ~~BELOW~~ ON  
 LEFT - ☉ PAV'T - RIGHT ON  
13.8' TO RT EDGE PAVEMENT  
 S.L.M. 602+96.63  
 GRID: NORTHING: 636545.519 EASTING: 1770695.985



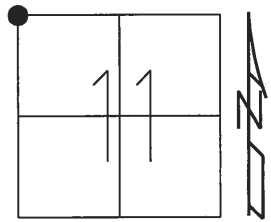
RECORD: P.I.  
 1986  
 $\Delta = 0^\circ 04' \text{ LT}$   
 STA. 602+92.59  
 FD MONBOX  
 7-5-01, BVD  
 FD MONBOX  
 W/ 1" IPIN  
 REF23  
 3-28-16, JFO  
 SET STRATLERS  
 2-28-18, JFO



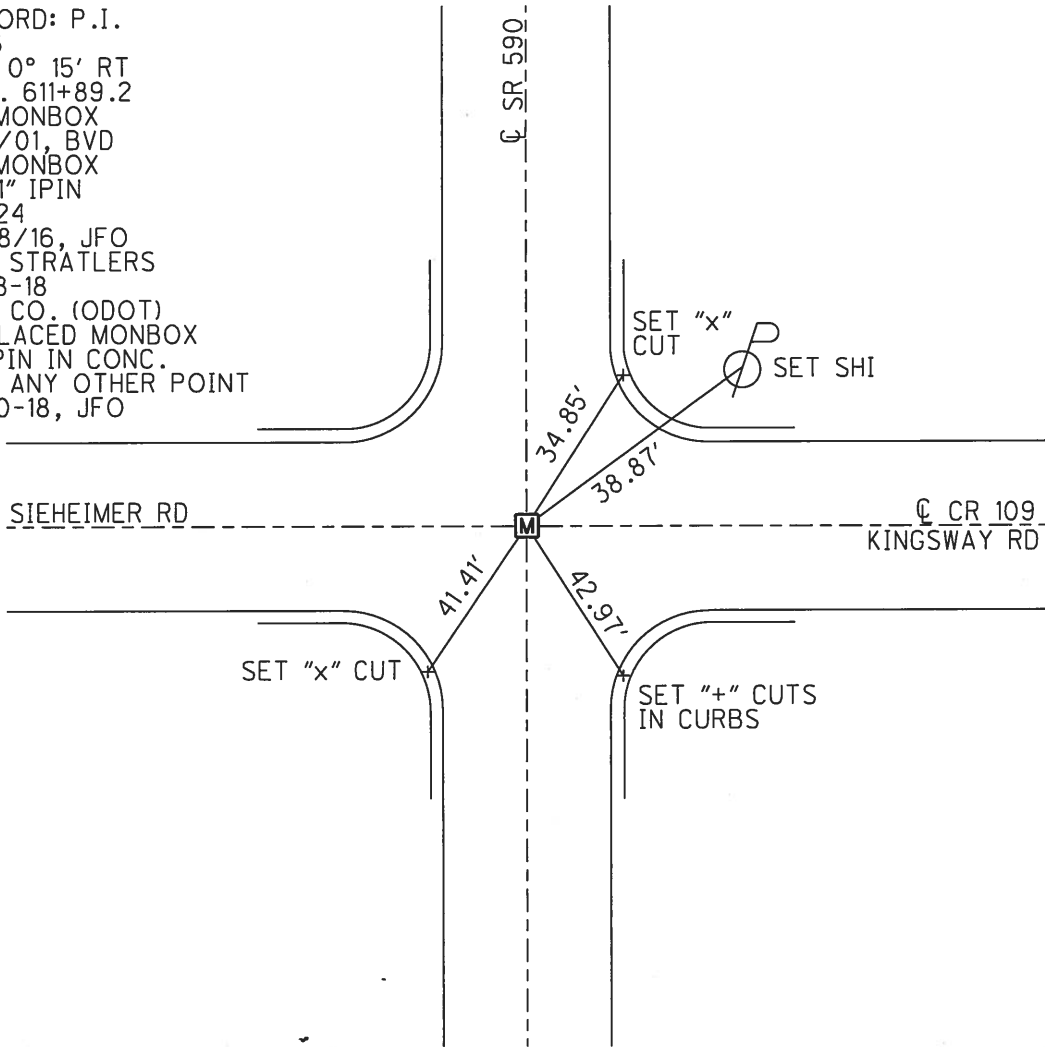
O.D.O.T. DISTRICT 2 SURVEY OFFICE (USE ONLY)

PERSONNEL \_\_\_\_\_ REFERENCE NO. 24 SHEET 7 OF 16  
 NOTES RHOADES DATE 2/28/18 ROUTE SR 590  
 H.C. O'DONNELL WEATHER RAIN COUNTY SANDUSKY  
 R.C. AUBLE TEMP. 49° TOWNSHIP WASHINGTON  
 \_\_\_\_\_ SECTION 11  
 \_\_\_\_\_ T 5 N R 14 E

TYPE MONUMENT MONBOX W/ 1" IPIN  
 ON SURFACE - ~~BELOW~~ ON \_\_\_\_\_  
 LEFT - ☉ PAV'T - RIGHT ON \_\_\_\_\_  
 -      TO      EDGE PAVEMENT  
 S.L.M. 611+90.12  
 GRID: NORTHING: 637441.394 EASTING: 1770729.168



RECORD: P.I.  
 1986  
 $\Delta = 0^\circ 15' RT$   
 STA. 611+89.2  
 FD MONBOX  
 7/5/01, BVD  
 FD MONBOX  
 W/ 1" IPIN  
 REF24  
 3/28/16, JFO  
 SET STRATLERS  
 2-28-18  
 SAN CO. (ODOT)  
 REPLACED MONBOX  
 1" IPIN IN CONC.  
 DNF ANY OTHER POINT  
 8-30-18, JFO



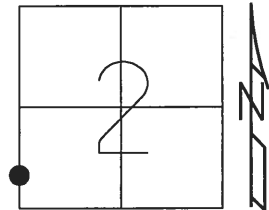


**O.D.O.T. DISTRICT 2 SURVEY OFFICE (USE ONLY)**

PERSONNEL \_\_\_\_\_ REFERENCE NO. 24 A SHEET 8 OF 16

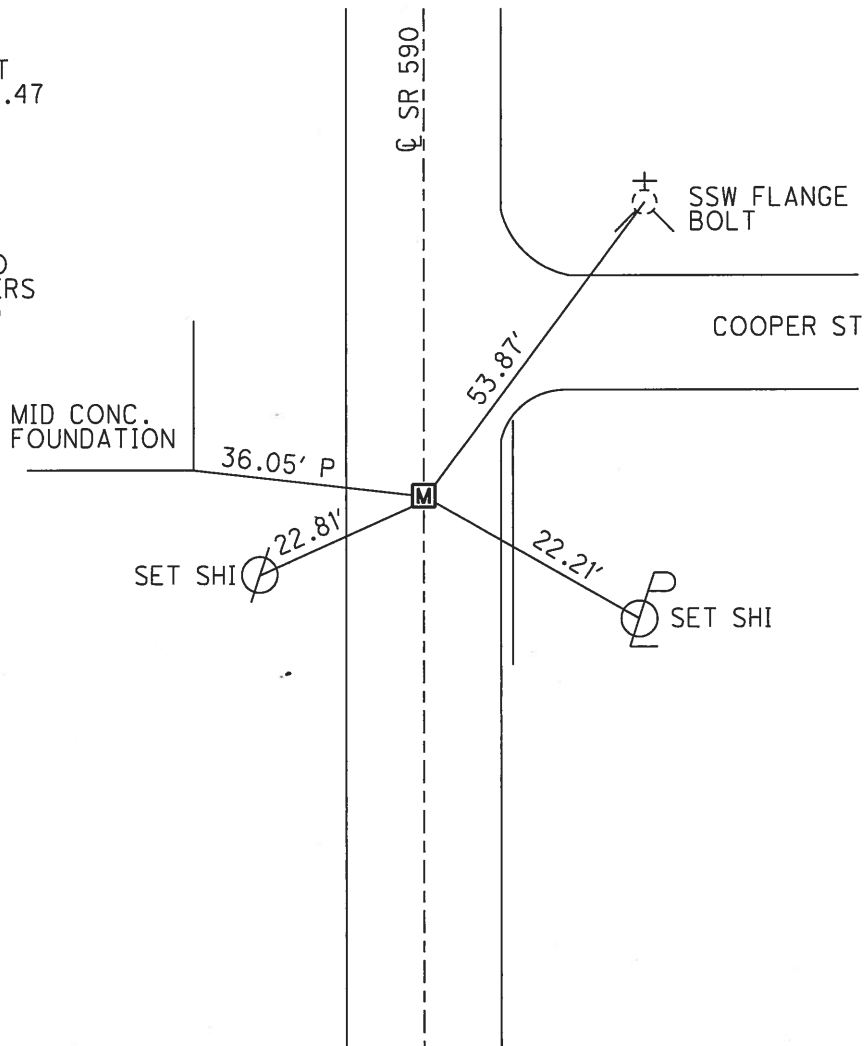
NOTES	<u>RHOADES</u>	DATE	<u>2/28/18</u>	ROUTE	<u>SR 590</u>
H.C.	<u>O'DONNELL</u>	WEATHER	<u>CLOUDY</u>	COUNTY	<u>SANDUSKY</u>
R.C.	<u>AUBLE</u>	TEMP.	<u>49°</u>	TOWNSHIP	<u>WASHINGTON</u>
				SECTION	<u>2</u>
					<u>T 5 N R 14 E</u>

TYPE MONUMENT MONBOX W/ 1" IPIN  
 ON SURFACE - ~~BELOW~~ ON  
 LEFT - ☉ PAV'T - RIGHT ON  
15.2' TO LT EDGE PAVEMENT  
 S.L.M. 620+55.09



GRID: NORTHING: 638305.639 EASTING: 1770764.524

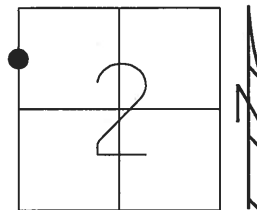
RECORD: P.I.  
 1986  
 $\Delta = 0^\circ 16' RT$   
 STA. 620+54.47  
 FD MONBOX  
 7/5/01, BVD  
 FD MONBOX  
 BROKEN LID  
 W/ 1" IPIN  
 REFA24  
 3/28/16, JFO  
 SET STRATLERS  
 2-28-18, JFO



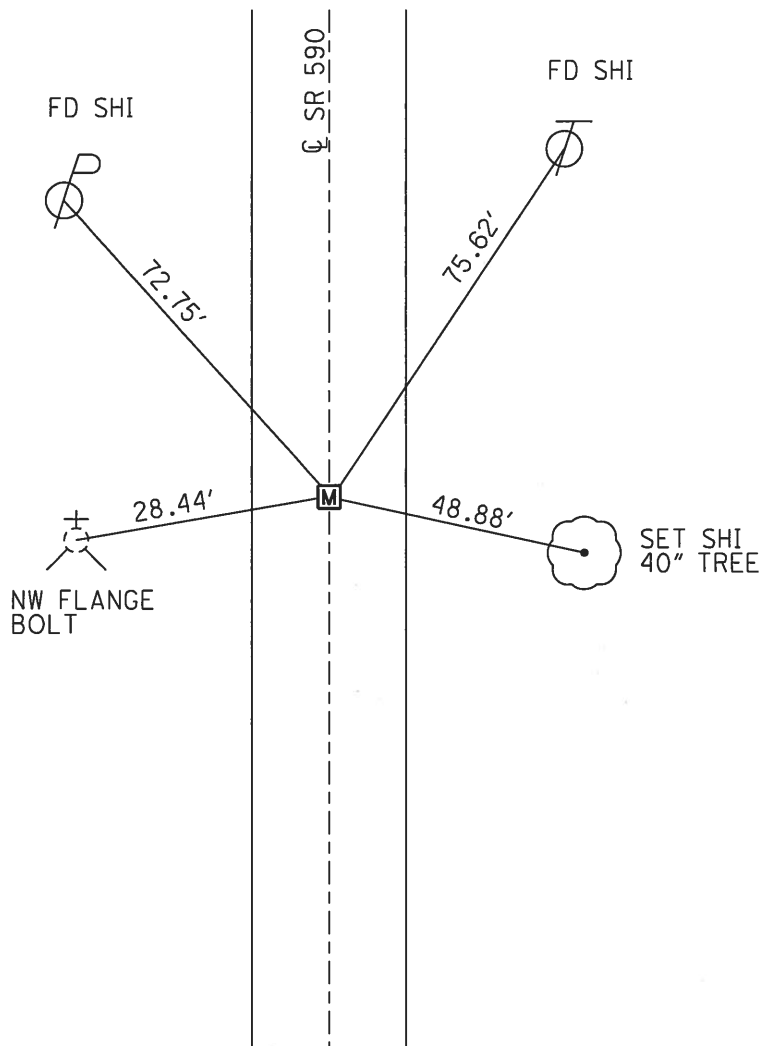
O.D.O.T. DISTRICT 2 SURVEY OFFICE (USE ONLY)

PERSONNEL \_\_\_\_\_ REFERENCE NO. 25 SHEET 9 OF 16  
 NOTES RHOADES DATE 2/28/18 ROUTE SR 590  
 H.C. O'DONNELL WEATHER CLOUDY COUNTY SANDUSKY  
 R.C. AUBLE TEMP. 54° TOWNSHIP WASHINGTON  
 \_\_\_\_\_ SEAMAN \_\_\_\_\_ SECTION 2  
 \_\_\_\_\_ T 5 N R 14 E

TYPE MONUMENT MONBOX W/ 1" IPIN  
 ON SURFACE - ~~BELOW~~ ON  
 LEFT - ☉ PAV'T - RIGHT ON  
15.1' TO LT EDGE PAVEMENT  
 S.L.M. 642+08.04  
 GRID: NORTHING: 640457.313 EASTING: 1770842.999



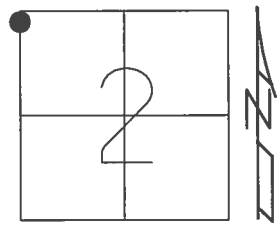
RECORD: P.I.  
 1986  
 $\Delta = 0^\circ 03' \text{ LT}$   
 STA. 642+07.77  
 FD MONBOX  
 7/5/01, BVD  
 FD MONBOX  
 COVERED  
 W/ ASPHALT  
 W/ 1" IPIN  
 REF25  
 SHOT "+"  
 3/28/16, JFO  
 FD MONBOX  
 W/ 1" IPIN  
 REF25  
 SET STRATLERS  
 2-28-18, JFO



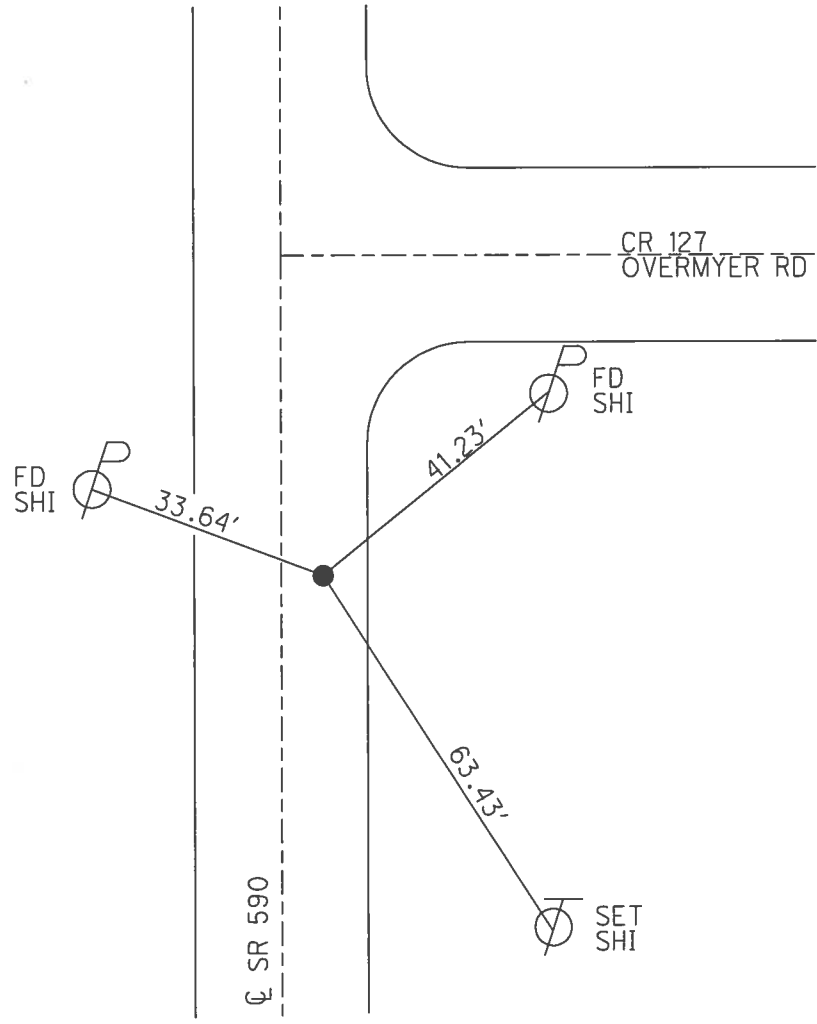
O.D.O.T. DISTRICT 2 SURVEY OFFICE (USE ONLY)

PERSONNEL \_\_\_\_\_ REFERENCE NO. 25 A SHEET 9 OF 15  
 NOTES RHOADES DATE 7/20/17 ROUTE SR 590  
 H.C. O'DONNELL WEATHER SUNNY COUNTY SANDUSKY  
 R.C. POORE TEMP. 82° TOWNSHIP WASHINGTON  
 \_\_\_\_\_ SECTION 2  
 \_\_\_\_\_ T 5 N R 14 E

TYPE MONUMENT P.K./WASHER  
~~ON SURFACE~~ - BELOW 2 1/2"  
~~LEFT~~ - CL PAV'T - RIGHT 4'  
5.3' TO RT EDGE PAVEMENT  
 S.L.M. 666+41.20  
 GRID: NORTHING: 642888.785 EASTING: 1770929.554



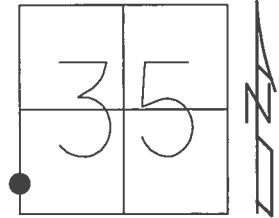
RECORD: P.I.  
 $\Delta = 9^\circ 52' 00''$  LT  
 STA. 24+33.55  
 1927 PLANS  
 P.K./WASHER ATOP  
 P.K.NAIL  
 SET P.K./WASHER  
 9/4/01, BVD  
 FD P.K./WASHER  
 2 1/2" DOWN  
 COVERED  
 REFA25  
 4/8/16, JFO  
 SET MAG/WASHER  
 11/8/17, JFO



O.D.O.T. DISTRICT 2 SURVEY OFFICE (USE ONLY)

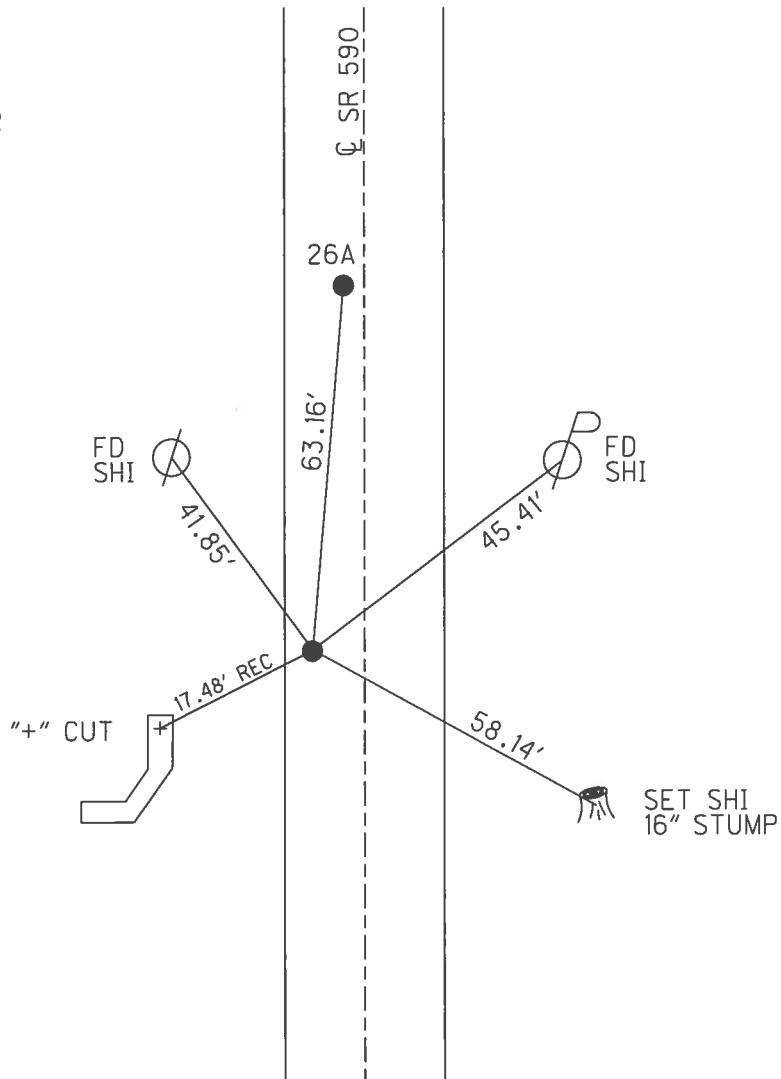
PERSONNEL \_\_\_\_\_ REFERENCE NO. 26 SHEET 10 OF 15  
 NOTES RHOADES DATE 7/20/17 ROUTE SR 590  
 H.C. O'DONNELL WEATHER SUNNY COUNTY SANDUSKY  
 R.C. POORE TEMP. 85° TOWNSHIP WASHINGTON  
 SECTION 35  
 T 5 N R 14 E

TYPE MONUMENT MAG/WASHER  
~~ON SURFACE~~ - BELOW 1"  
 LEFT - ℄ PAV'T - ~~RIGHT~~ 8.7'  
1.1' TO LT EDGE PAVEMENT  
 S.L.M. 670+92.57



GRID: NORTHING: 643335.174 EASTING: 1770862.437

RECORD:  
 STA. 671+07  
 P.K./WASHER  
 3" DOWN  
 SET P.K./WASHER  
 9/4/01, BVD  
 FD P.K.SHANK  
 1" DOWN  
 SET MAG/WASHER  
 REF26  
 3/28/16, JFO  
 UNCOVERED  
 11/8/17, JFO

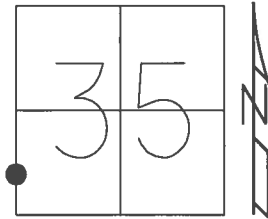


O.D.O.T. DISTRICT 2 SURVEY OFFICE (USE ONLY)

PERSONNEL \_\_\_\_\_ REFERENCE NO. 26 A SHEET 11 OF 15

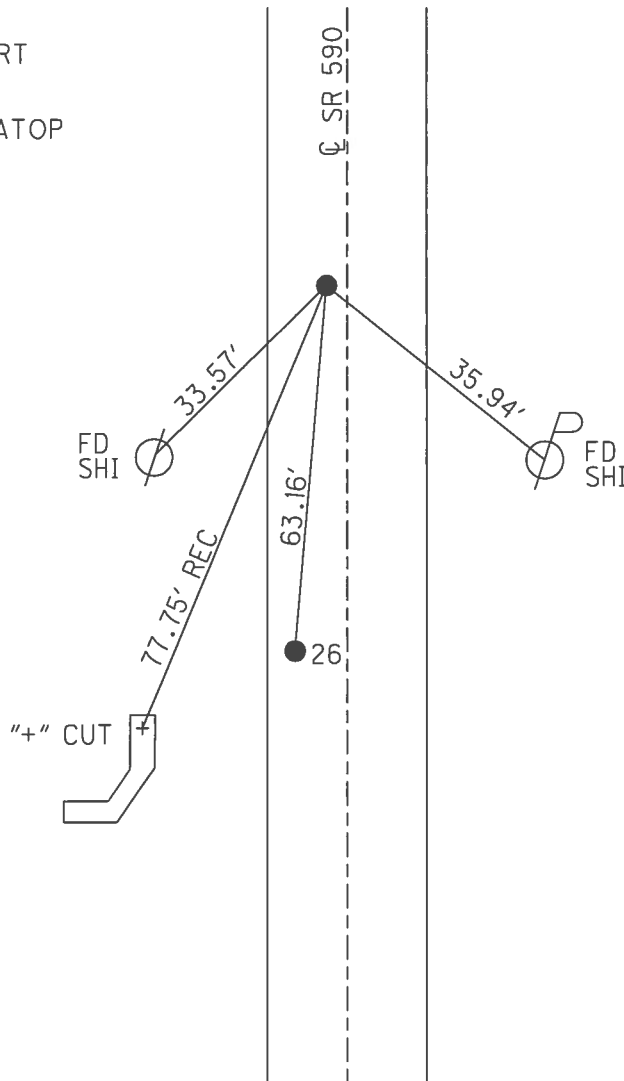
NOTES RHOADES DATE 7/20/17 ROUTE SR 590  
 H.C. O'DONNELL WEATHER SUNNY COUNTY SANDUSKY  
 R.C. POORE TEMP. 85° TOWNSHIP WASHINGTON  
 \_\_\_\_\_ SECTION 35  
 \_\_\_\_\_ T 5 N R 14 E

TYPE MONUMENT MAG/WASHER  
 ON SURFACE - ~~BELOW~~ ON \_\_\_\_\_  
 LEFT - ☉ PAV'T - ~~RIGHT~~ 6.8'  
3.0' TO LT EDGE PAVEMENT  
 S.L.M. 671+55.44



GRID: NORTHING: 643398.236 EASTING: 1770859.529

RECORD: P.I.  
 $\Delta = 08^\circ 00' 00''$  RT  
 1927 PLAN  
 STA. 29+67.63  
 FD P.K./WASHER ATOP  
 P.K./WASHER  
 STA. 671+07  
 P.K./WASHER  
 3" DOWN  
 SET P.K./WASHER  
 9/4/01, BVD  
 FD P.K.SHANK  
 SET MAG/WASHER  
 REFA26  
 3/28/16, JFO  
 UNCOVERED  
 11/8/17, JFO

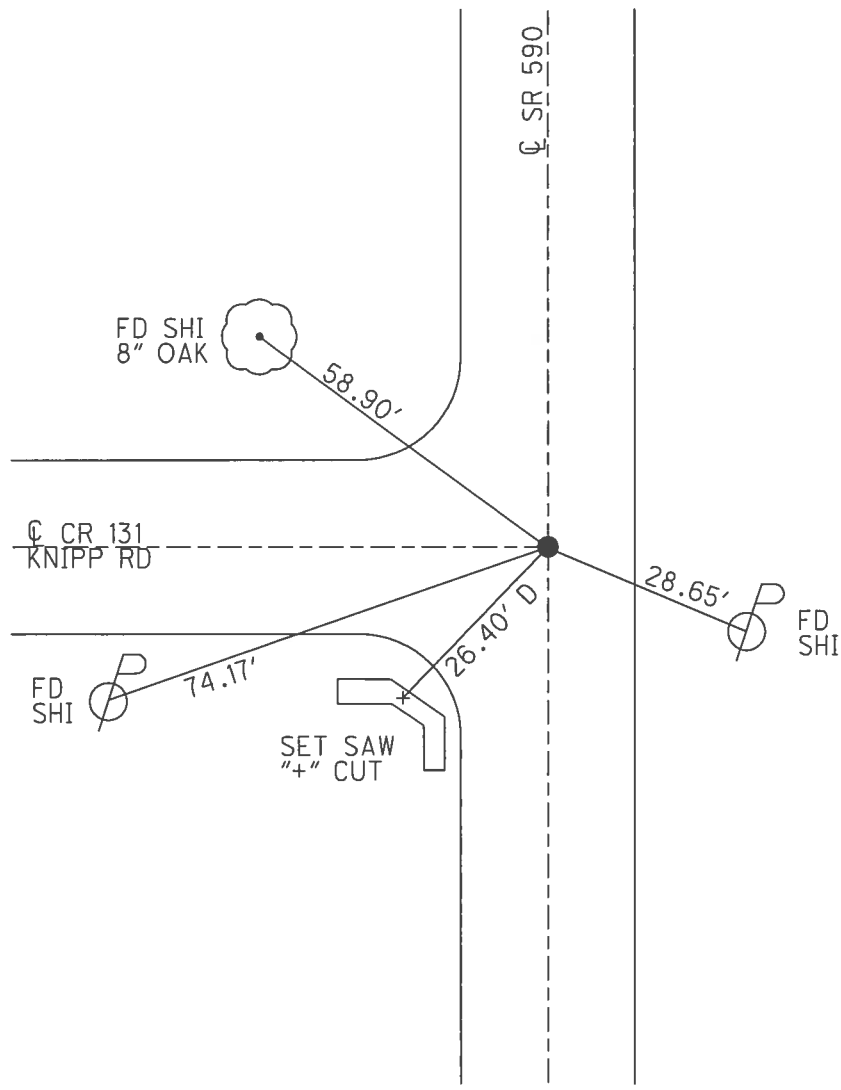
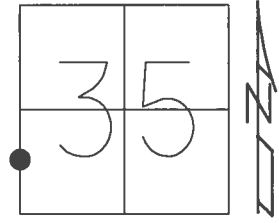


O.D.O.T. DISTRICT 2 SURVEY OFFICE (USE ONLY)

PERSONNEL \_\_\_\_\_ REFERENCE NO. 27 SHEET 12 OF 15

NOTES RHOADES DATE 7/20/17 ROUTE SR 590  
 H.C. O'DONNELL WEATHER SUNNY COUNTY SANDUSKY  
 R.C. POORE TEMP. 84° TOWNSHIP WASHINGTON  
 \_\_\_\_\_ SECTION 35  
 \_\_\_\_\_ T 5 N R 14 E

TYPE MONUMENT P.K./WASHER  
 ON SURFACE - ~~BELOW~~ ON  
 LEFT - ☑ PAV'T - RIGHT ON  
9.9' TO RT EDGE PAVEMENT  
 S.L.M. 680+48.18  
 GRID: NORTHING: 644290.962 EASTING: 1770864.685

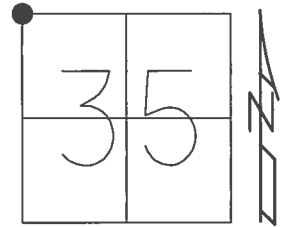


RECORD: P.O.T.  
 STA. 38+40 ±  
 1927 PLANS  
 SET P.K./WASHER  
 9/4/01, BVD  
 FD P.K./WASHER  
 REF27  
 3/28/16, JFO  
 UNCOVERED  
 11/8/17, JFO

O.D.O.T. DISTRICT 2 SURVEY OFFICE (USE ONLY)

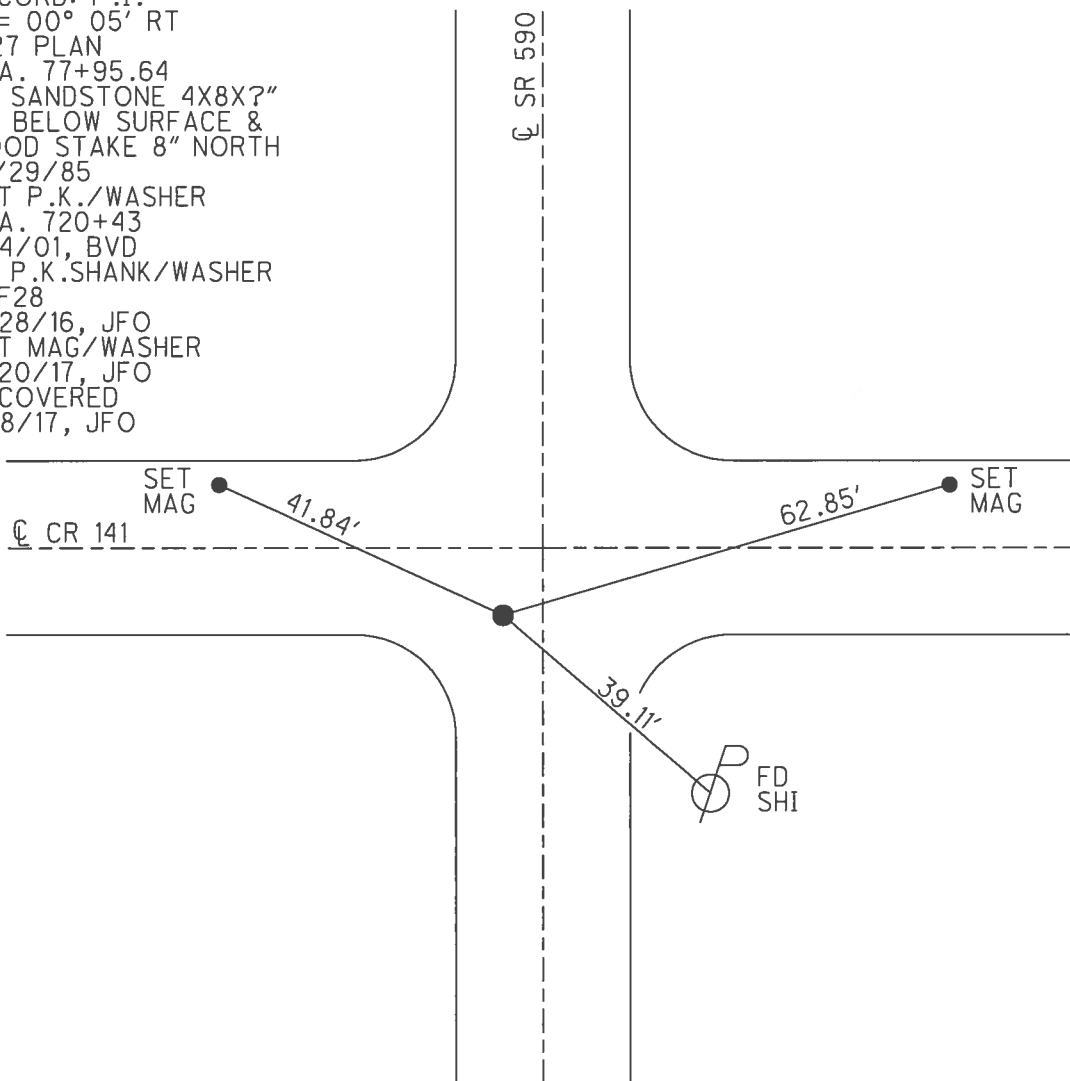
PERSONNEL \_\_\_\_\_ REFERENCE NO. 28 SHEET 13 OF 15  
 NOTES RHOADES DATE 7/20/17 ROUTE SR 590  
 H.C. O'DONNELL WEATHER SUNNY COUNTY SANDUSKY  
 R.C. POORE TEMP. 84° TOWNSHIP WASHINGTON  
 \_\_\_\_\_ SECTION 35  
 \_\_\_\_\_ T 5 N R 14 E

TYPE MONUMENT MAG/WASHER  
 ON SURFACE - ~~BELOW~~ ON  
 LEFT - CL PAV'T - ~~RIGHT~~ 4', 8' S OF CL W  
- TO - EDGE PAVEMENT  
 S.L.M. 720+01.79



GRID: NORTHING: 648244.561 EASTING: 1770874.232

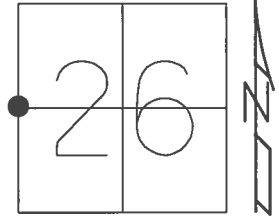
RECORD: P.I.  
 $\Delta = 00^\circ 05' RT$   
 1927 PLAN  
 STA. 77+95.64  
 FD SANDSTONE 4X8X?"  
 18" BELOW SURFACE &  
 WOOD STAKE 8" NORTH  
 10/29/85  
 SET P.K./WASHER  
 STA. 720+43  
 9/4/01, BVD  
 FD P.K.SHANK/WASHER  
 REF28  
 3/28/16, JFO  
 SET MAG/WASHER  
 7/20/17, JFO  
 UNCOVERED  
 11/8/17, JFO



O.D.O.T. DISTRICT 2 SURVEY OFFICE (USE ONLY)

PERSONNEL \_\_\_\_\_ REFERENCE NO. 29 SHEET 14 OF 15  
 NOTES RHOADES DATE 7/20/17 ROUTE SR 590  
 H.C. O'DONNELL WEATHER SUNNY COUNTY SANDUSKY  
 R.C. POORE TEMP. 82° TOWNSHIP WASHINGTON  
 SECTION 26  
 T 5 N R 14 E

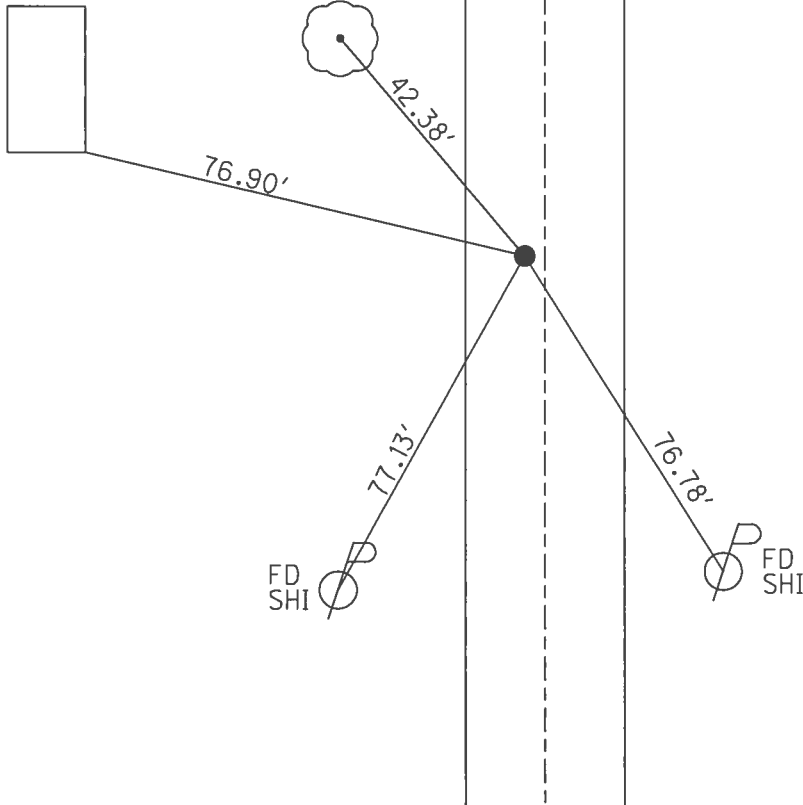
TYPE MONUMENT MAG/WASHER  
 ON SURFACE - ~~BELOW~~ ON \_\_\_\_\_  
 LEFT - ☉ PAV'T - ~~RIGHT~~ 3'  
7' TO LT EDGE PAVEMENT  
 S.L.M. 746+39.35



GRID: NORTHING: 650882.095 EASTING: 1770885.887

CONC. BLOCK  
MILK HOUSE  
MID. 2ND  
BLOCK UP

SET SHI  
24" MAPLE



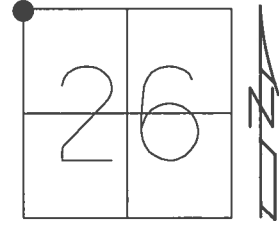
RECORD: P.I.  
 $\Delta = 00^\circ 13' \text{ LT}$   
 1927 PLAN  
 STA. 104+31.50  
 FD GRANITE STONE  
 SM.HOLE IN TOP  
 21" BELOW SURFACE  
 1" IPIPE 6" NORTH  
 10/29/85  
 SET P.K./WASHER  
 STA. 746+94  
 9/4/01, BVD  
 FD P.K.SHANK/WASHER  
 REF29  
 3/28/16, JFO  
 SET MAG/WASHER  
 7/20/17, JFO  
 UNCOVERED  
 11/8/17, JFO



O.D.O.T. DISTRICT 2 SURVEY OFFICE (USE ONLY)

PERSONNEL \_\_\_\_\_ REFERENCE NO. 30 SHEET 15 OF 15  
 NOTES RHOADES DATE 7/20/17 ROUTE SR 590  
 H.C. O'DONNELL WEATHER SUNNY COUNTY SANDUSKY  
 R.C. POORE TEMP. 82° TOWNSHIP WASHINGTON  
 SECTION 26  
 T 5 N R 14 E

TYPE MONUMENT MAG/WASHER  
 ON SURFACE - ~~BELOW~~ ON \_\_\_\_\_  
 LEFT - ☉ PAV'T - ~~RIGHT~~ 2'  
7.8' TO LT EDGE PAVEMENT  
 S.L.M. 772+76.06  
 GRID: NORTHING: 653518.803 EASTING: 1770887.062



RECORD: P.I.  
 1927 PLAN  
 STA. 130+69.20  
 FD STONE  
 1973/1983  
 FD P.K./WASHER  
 7/5/01, BVD  
 SET P.K./WASHER  
 STA. 773+46  
 9/4/01, BVD  
 FD P.K./WASHER  
 1/24/06, RGN  
 SET MAG/WASHER  
 5/28/09, SAH  
 FD P.K./WASHER  
 REF30  
 3/28/16, JFO  
 SET MAG/WASHER  
 7/20/17, JFO  
 UNCOVERED  
 11/8/17, JFO

NOTE:  
 OTT. CO. REF 1

