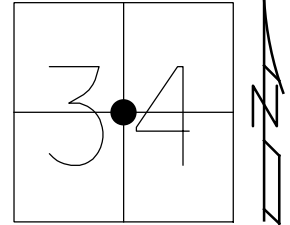


O.D.O.T. DISTRICT 2 SURVEY OFFICE (USE ONLY)

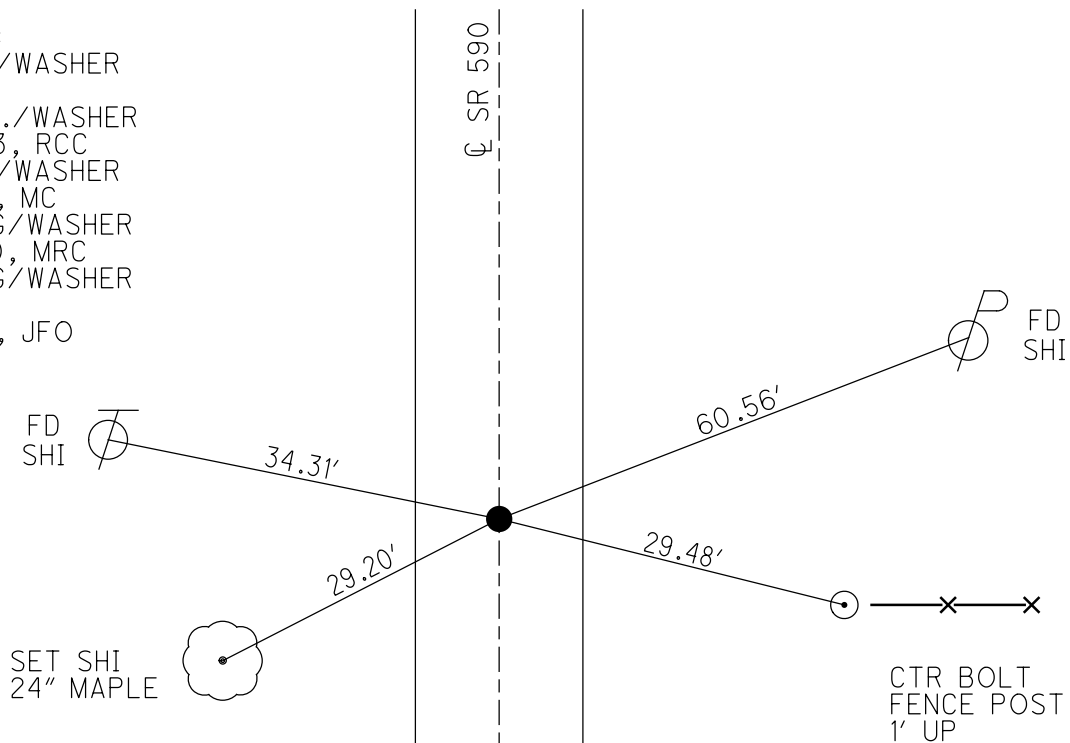
PERSONNEL \_\_\_\_\_ REFERENCE NO. 1 SHEET 3 OF 33  
 NOTES TRENKA DATE 6-11-18 ROUTE SR 590  
 H.C. RHOADES WEATHER CLOUDY COUNTY SANDUSKY  
 R.C. TRENKA TEMP. 64° TOWNSHIP JACKSON  
 DWG BY AUBLE PID 95765 SECTION 34  
 T 4 N R 14 E

TYPE MONUMENT MAG/WASHER  
 ON SURFACE - ~~BELOW~~ ON  
 OFFSET Q PAVEMENT ON LT : RT  
10.2' TO LT EDGE PAVEMENT  
 STATION: 26+84



HORZ. DATUM: NAD83(2011) GEOID: 2012A  
 GRID: NORTHING: 581454.840 EASTING: 1766297.552

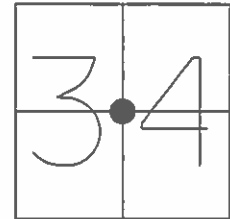
RECORD:  
 FD P.K./WASHER  
 5/4/82  
 SET P.K./WASHER  
 6/29/93, RCC  
 FD P.K./WASHER  
 7/21/10, MC  
 SET MAG/WASHER  
 10/19/10, MRC  
 SET MAG/WASHER  
 REF1  
 8-23-19, JFO



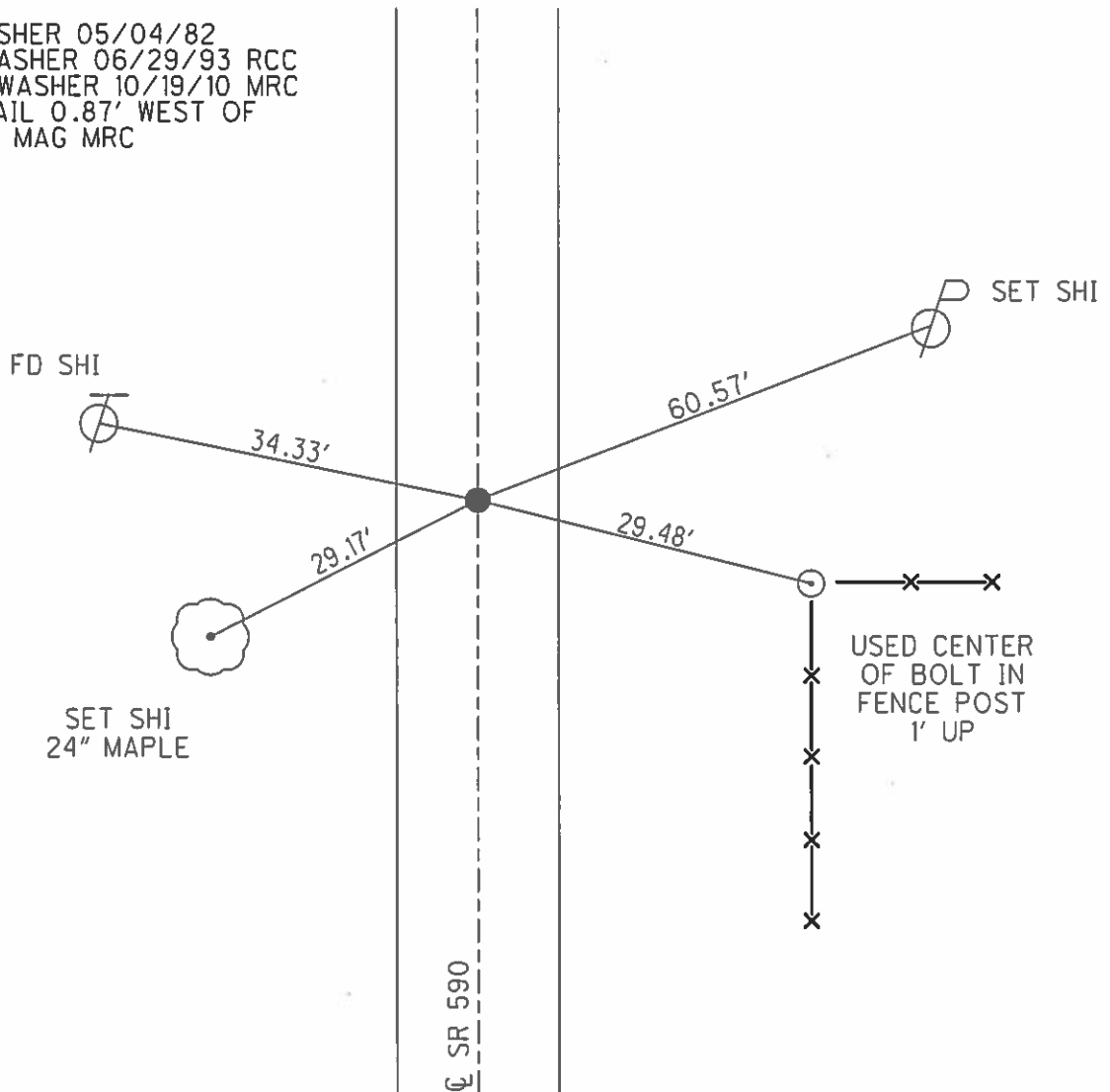
O.D.O.T. DISTRICT 2 SURVEY OFFICE (USE ONLY)

PERSONNEL \_\_\_\_\_ REFERENCE NO. 1 SHEET 3 OF 33  
 NOTES CANTERBURY DATE 07/21/10 ROUTE SR 590  
 H.C. HUSS WEATHER FAIR COUNTY SANDUSKY  
 R.C. HARBAUGH TEMP. +86° TOWNSHIP JACKSON  
 \_\_\_\_\_ SECTION 34  
 \_\_\_\_\_ T 4 N R 14 E

TYPE MONUMENT \_\_\_\_\_ PK/WASHER \_\_\_\_\_  
 ON SURFACE - ~~BELOW~~ \_\_\_\_\_ ON \_\_\_\_\_  
~~LEFT~~ - Q PAV'T - ~~RIGHT~~ \_\_\_\_\_ ON \_\_\_\_\_  
10.2' TO LT EDGE PAVEMENT  
 S.L.M. \_\_\_\_\_ 26+84  
 GRID: NORTHING: 581454.927 EASTING: 1766297.508



RECORD:  
 FD PK/WASHER 05/04/82  
 SET PK/WASHER 06/29/93 RCC  
 SET MAG/WASHER 10/19/10 MRC  
 FD MAG NAIL 0.87' WEST OF  
 ODOT SET MAG MRC



O.D.O.T. DISTRICT 2 SURVEY OFFICE

PERSONNEL

REFERENCE NO. 1

SHEET 1 OF 18

NOTES RIFFLE

H.C. BARBOUR

DATE 5-18-1993

ROUTE #590

R.C. GEYMAN

WEATHER FAIR

COUNTY SANDUSKY

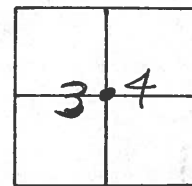
TEMP. 63°

TOWNSHIP JACKSON

SECTION 34

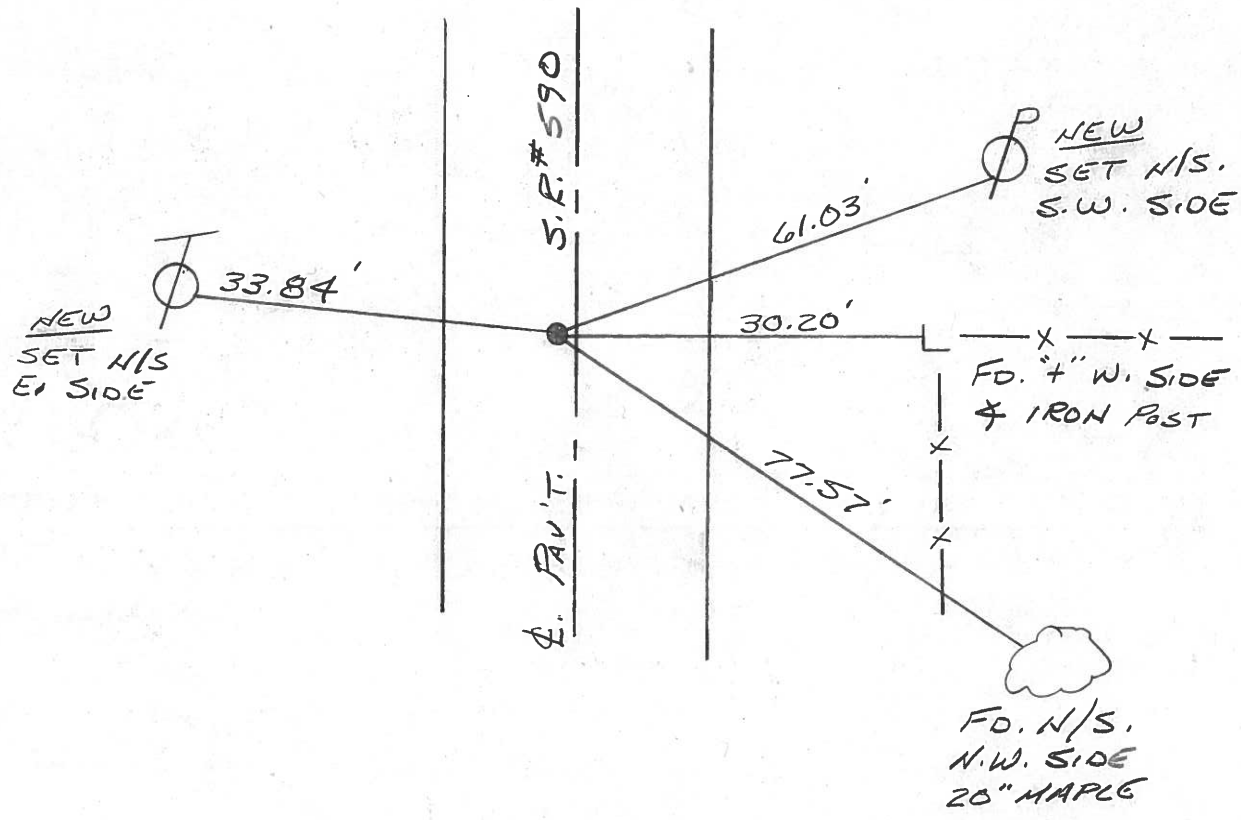
T 4N R 14E

TYPE MONUMENT PK/WASHER  
 ON SURFACE - ~~BELOW~~ ON  
 LEFT-CL PAV'T. - ~~RIGHT~~ 1.5'  
10' TO LT. EDGE PAVEMENT  
 S.L.M. 26+84



RECORD: 5-4-1982  
 STA. 26+87  
 FO. PK/WASHER @ SURFACE

SET PK/WASHER  
 6-29-1993  
 RCC



County SANDUSKY S.R. 590

Date 5-4-82

Township JACKSON

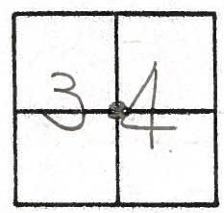
Weather Clear

Section 34

Temp. +75°

T4N, R4E

Personnel HOFFMAN



# 1

Loehrke  
Householder

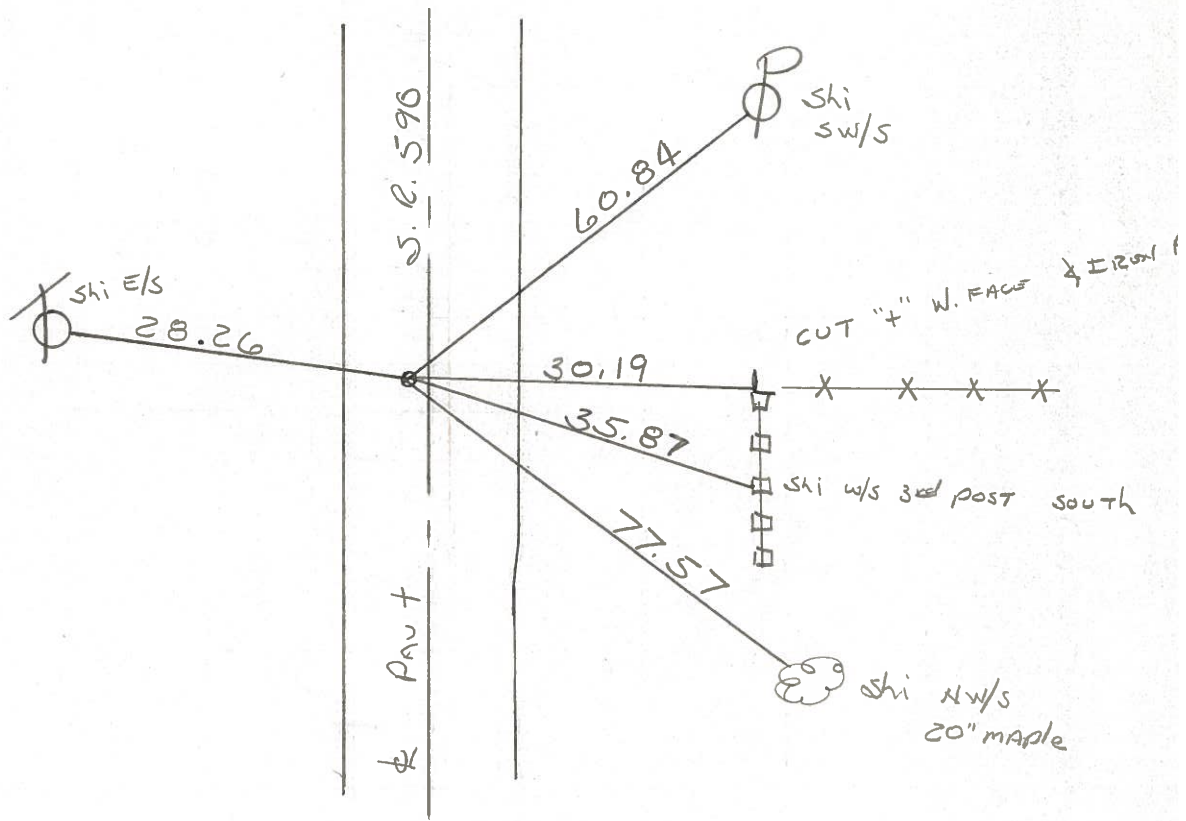
Fd. P.K./Washer @ surface

S.L.M. Sta ± 26+87

1.7' Lt. of Paut

12.5 TO E. EP.

9.4 TO W. EP.



PERSONNEL TITLE PERSONNEL TITLE

Schneider VIINSON

COUNTY SANDUSKY DATE 7-29-71

Mosser

S. R. 590 WEATHER FAIR

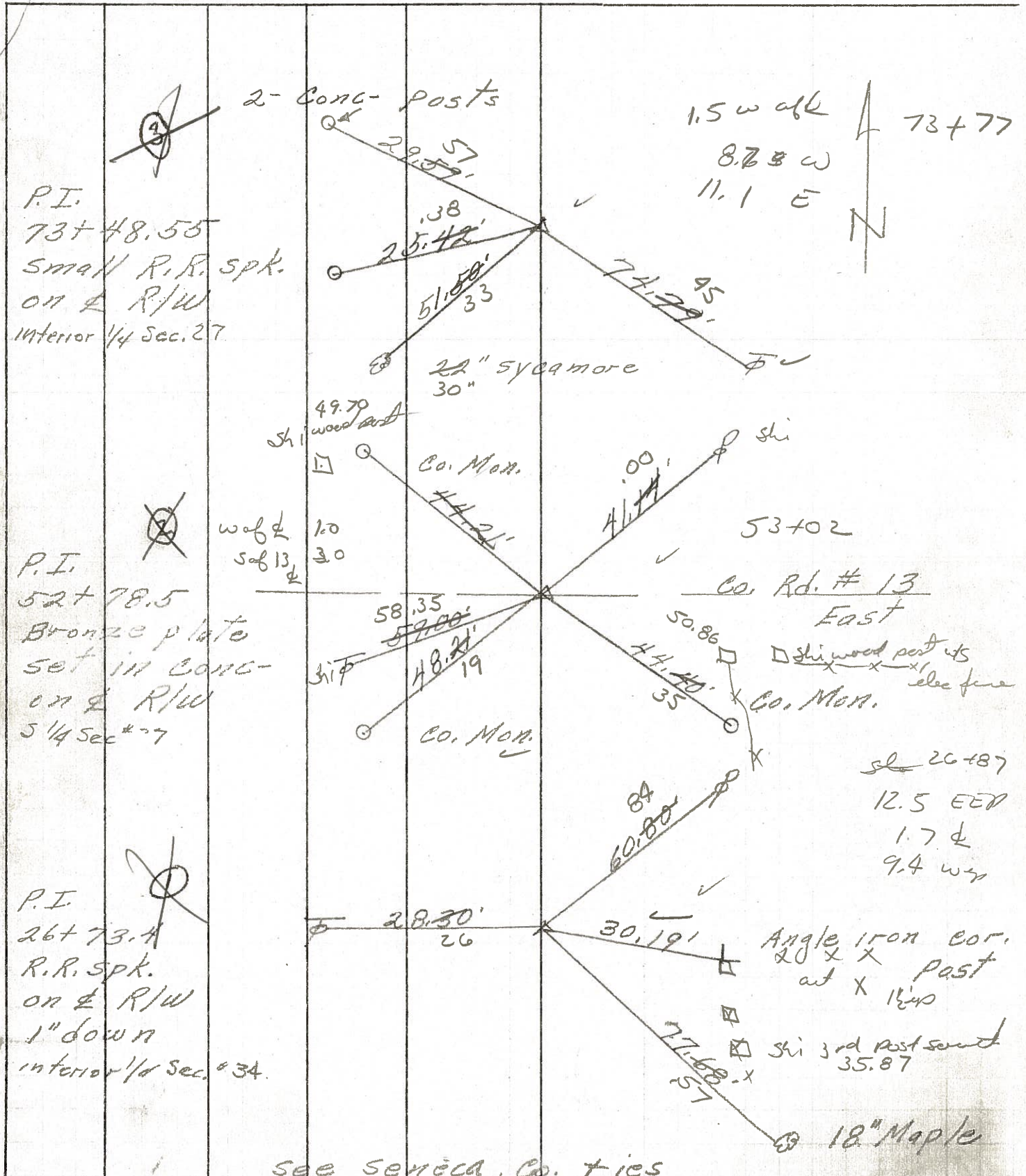
Barbour

SEC. 34 TEMP. 75°

Geyman

DESCRIPTION Seneca Co. Line North JOB NO. \_\_\_\_\_

LEFT CENTER LINE RIGHT



③

P.I.  
73+48.55  
Small R.R. spk.  
on & R/W  
interior 1/4 Sec. 27

②

pic/w

P.I.  
52+78.5  
Bronze plate  
set in conc-  
on & R/W  
5 1/4 Sec # 27

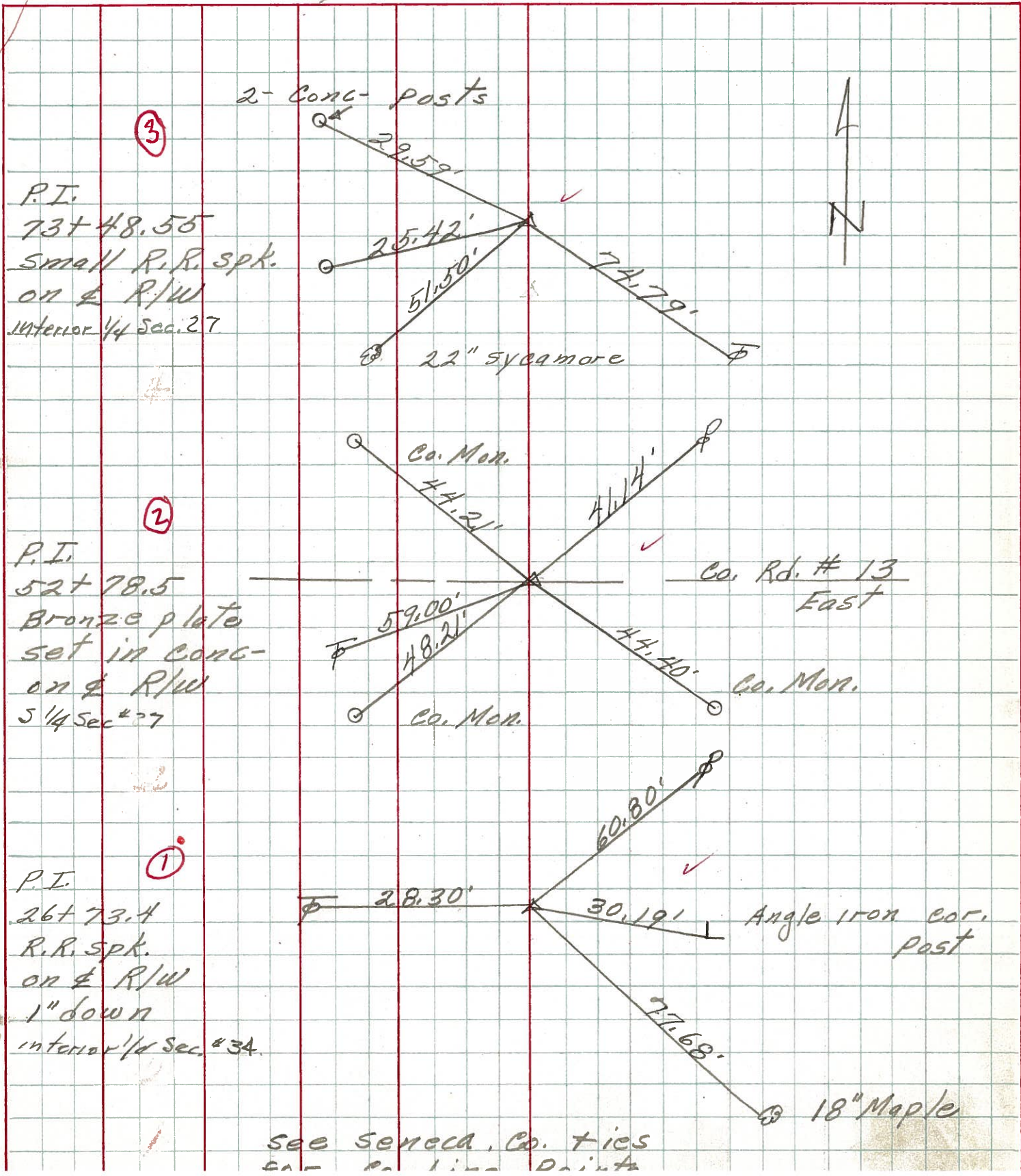
①

P.I.  
26+73.4  
R.R. spk.  
on & R/W  
1" down  
interior 1/4 Sec. # 34

See Seneca Co. ties



PERSONNEL	TITLE	PERSONNEL	TITLE	COUNTY	DATE
<u>Schnaider</u>		<u>Vinson</u>		<u>Sandusky</u>	<u>7-29-71</u>
<u>Mosser</u>				S. R.	WEATHER
<u>Barbour</u>				<u>590</u>	<u>Fair</u>
<u>Geyman</u>				SEC.	TEMP.
				<u>34</u>	<u>75°</u>
DESCRIPTION	<u>Seneca Co. Line North</u>			JOB NO.	
	LEFT	CENTER LINE	RIGHT		





PERSONNEL TITLE PERSONNEL TITLE

Schneider  
 Mosser  
 Barbour

COUNTY Sandusky DATE 4-1-68

S. R. 590 WEATHER Cool

SEC. Seneca Co. Line North TEMP. 40°

DESCRIPTION Ties for Control Points JOB NO.

