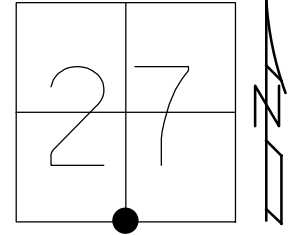


O.D.O.T. DISTRICT 2 SURVEY OFFICE (USE ONLY)

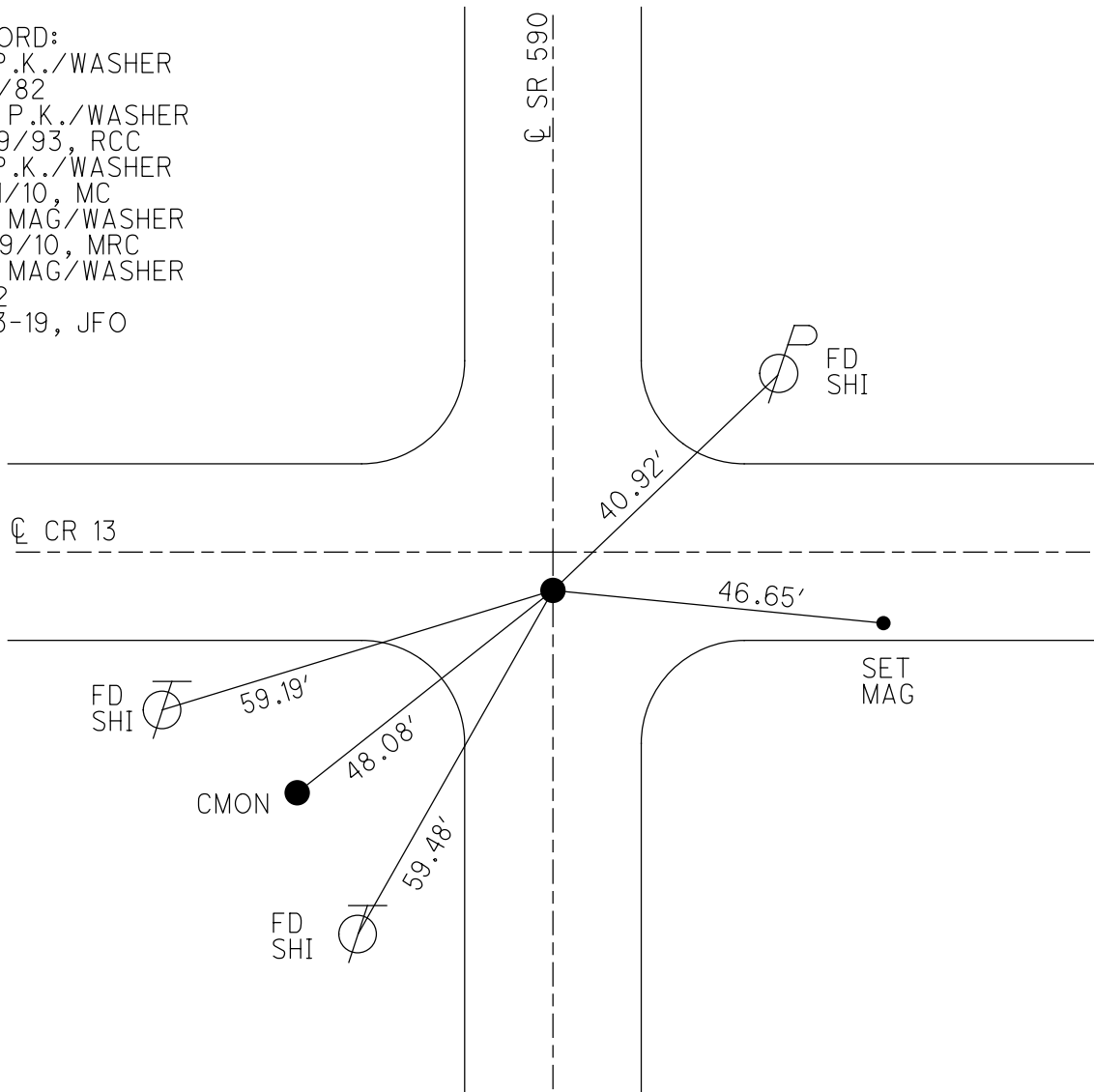
PERSONNEL _____ REFERENCE NO. 2 SHEET 4 OF 33
 NOTES TRENKA DATE 6-11-18 ROUTE SR 590
 H.C. RHOADES WEATHER CLOUDY COUNTY SANDUSKY
 R.C. TRENKA TEMP. 64° TOWNSHIP JACKSON
 DWG BY AUBLE PID 95765 SECTION 27
 T 4 N R 14 E

TYPE MONUMENT MAG/WASHER
 ON SURFACE - ~~BELOW~~ ON
 OFFSET \bar{C} PAVEMENT 0.3' ~~LT~~ : RT
11' TO LT EDGE PAVEMENT
 STATION: 52+84



HORZ. DATUM: NAD83(2011) GEOID: 2012A
 GRID: NORTHING: 584058.573 EASTING: 1766406.960

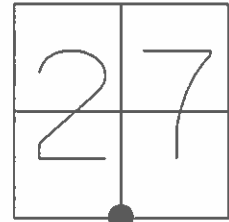
RECORD:
 FD P.K./WASHER
 5/4/82
 SET P.K./WASHER
 6/29/93, RCC
 FD P.K./WASHER
 7/21/10, MC
 SET MAG/WASHER
 10/19/10, MRC
 SET MAG/WASHER
 REF2
 8-23-19, JFO



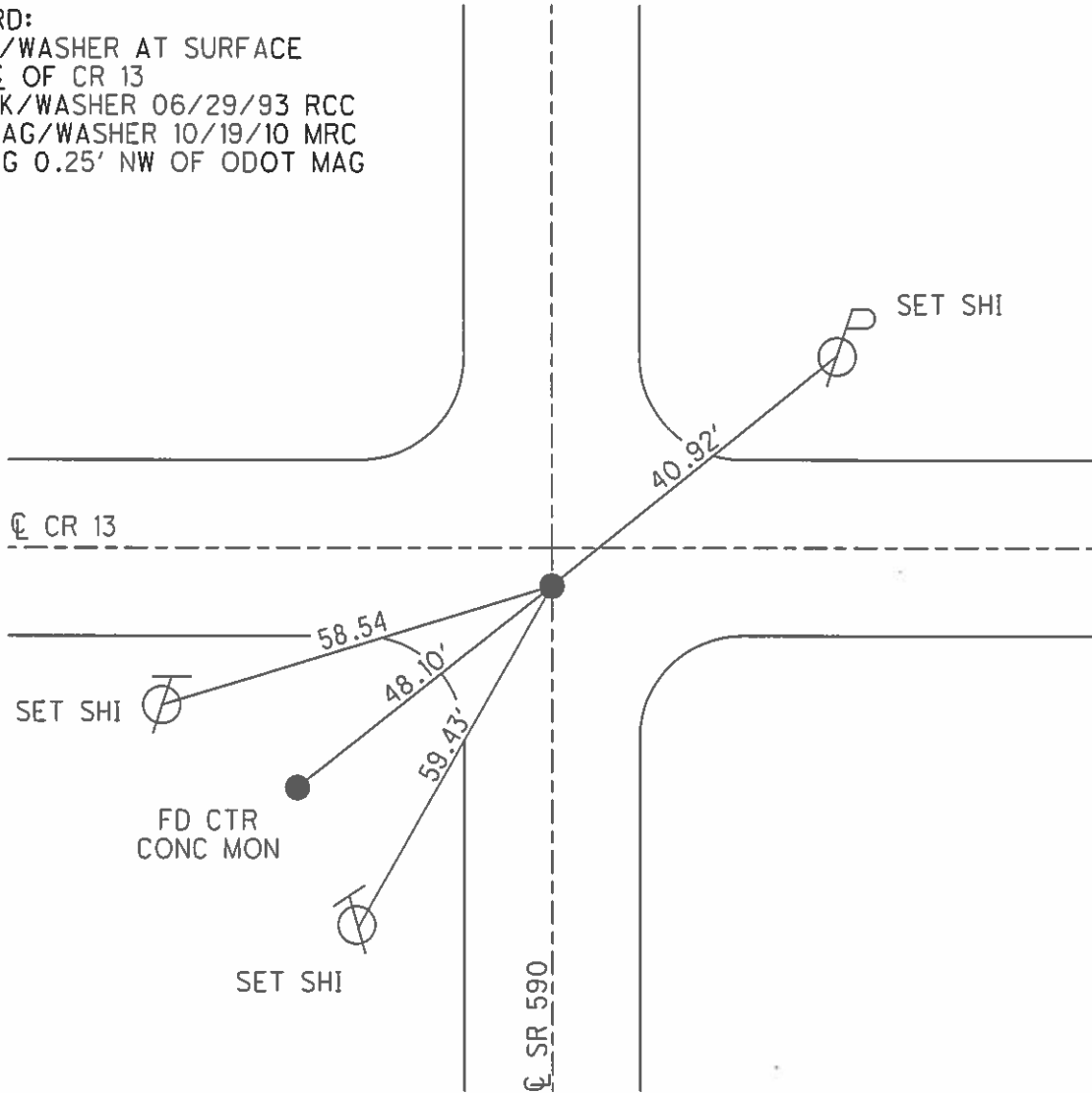
O.D.O.T. DISTRICT 2 SURVEY OFFICE (USE ONLY)

PERSONNEL _____ REFERENCE NO. 2 SHEET 4 OF 33
 NOTES CANTERBURY DATE 07/21/10 ROUTE SR 590
 H.C. HUSS WEATHER FAIR COUNTY SANDUSKY
 R.C. HARBAUGH TEMP. +86° TOWNSHIP JACKSON
 _____ SECTION 27
 _____ T 4 N R 14 E

TYPE MONUMENT _____ PK/WASHER _____
 ON SURFACE - ~~BELOW~~ _____ ON _____
~~LEFT~~ - ~~C~~ PAV'T - RIGHT _____ 0.3' _____
11.0' TO LT EDGE PAVEMENT
 S.L.M. _____ 52+84
 GRID: NORTHING: 584058.658 EASTING: 1766406.890



RECORD:
 FD PK/WASHER AT SURFACE
 3' S \odot OF CR 13
 SET PK/WASHER 06/29/93 RCC
 SET MAG/WASHER 10/19/10 MRC
 FD MAG 0.25' NW OF ODOT MAG



O.D.O.T. DISTRICT 2 SURVEY OFFICE

PERSONNEL _____

REFERENCE NO. 2

SHEET 2 OF 18

NOTES RIPPLE

H.C. BARBOUR

DATE 5-18-1993

ROUTE 590

R.C. GEYMAN

WEATHER FAIR

COUNTY SANDUSKY

TEMP. 63°

TOWNSHIP JACKSON

SECTION 27

T 4 N R 14 E

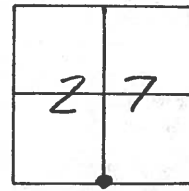
TYPE MONUMENT PK/WASHER

ON SURFACE - ~~BELOW~~ ON

~~LEFT~~ - Q PAV'T. - ~~RIGHT~~ ON

11'± TO LT. EDGE PAVEMENT

S.L.M. 52+84



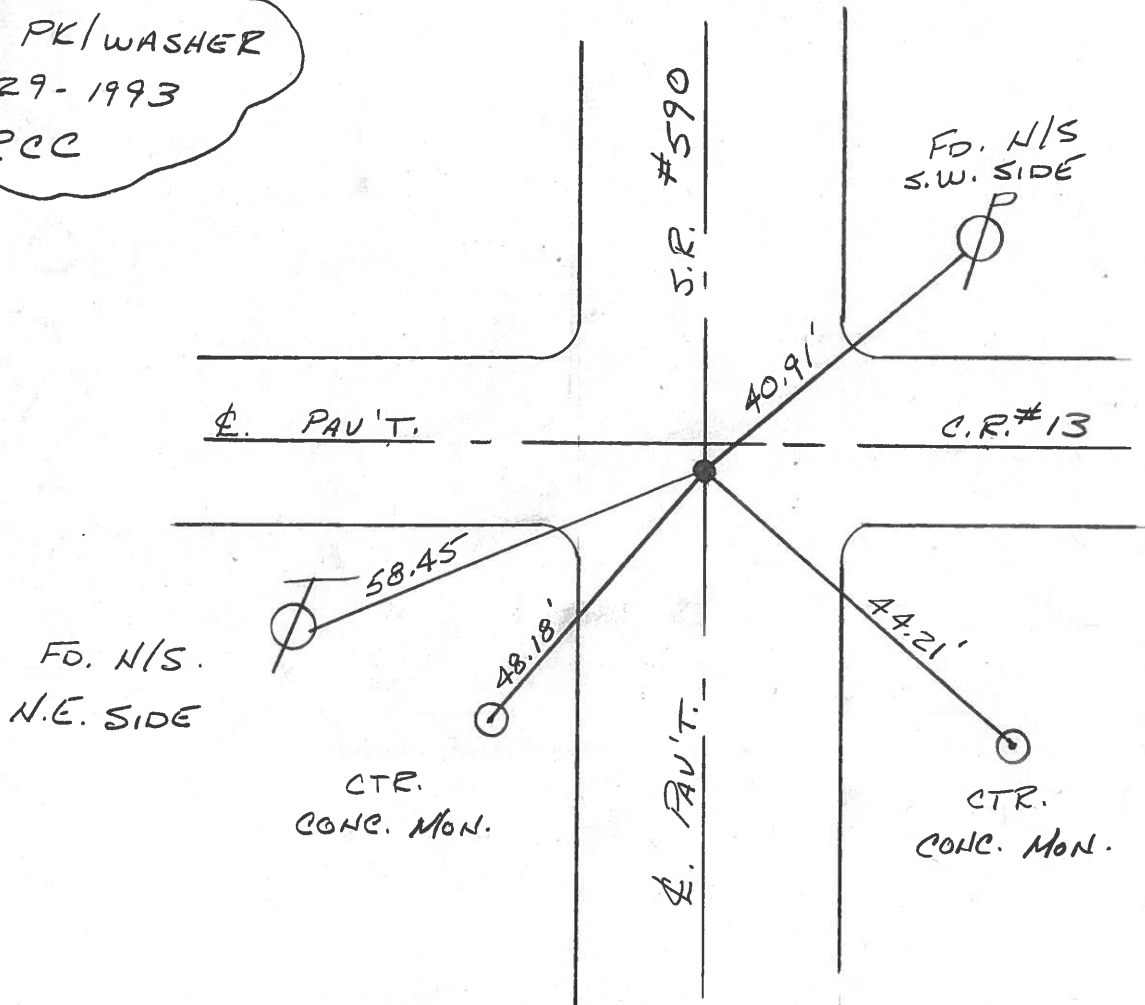
RECORD: 5-4-1982

STA. 53+02

FD. PK/WASHER @ SURFACE

3'± S. Q. PAV'T. C.R.#13

SET PK/WASHER
6-29-1993
RCC



Q.D.O.T. DISTRICT 2 SURVEY OFFICE

SHEET _____ OF _____

County SANDUSKY S.R. 590

Date 5-4-82

Township Jackson

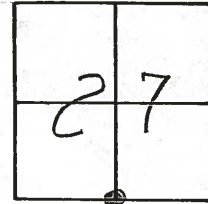
Weather clear

Section 27

Temp. +75°

T4N, R4E

Personnel HOFFMAN



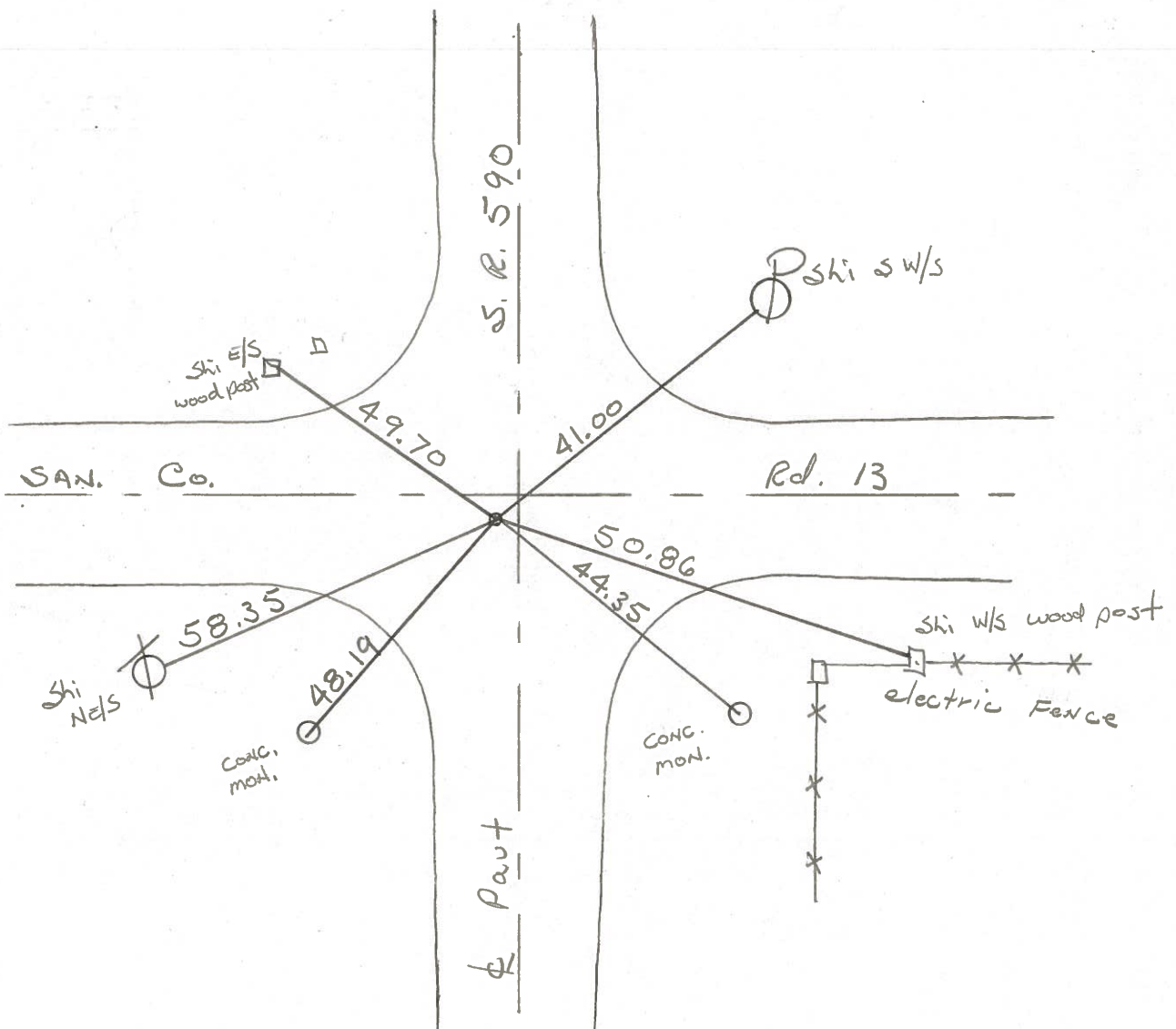
#2

§
Crew

Fd P.K./Waster @ surface

S.L.M. sta ± 53+02

- 1.0' W. of & Pavt SR590
- 3.0' S of & Pavt Co. Rd. 13



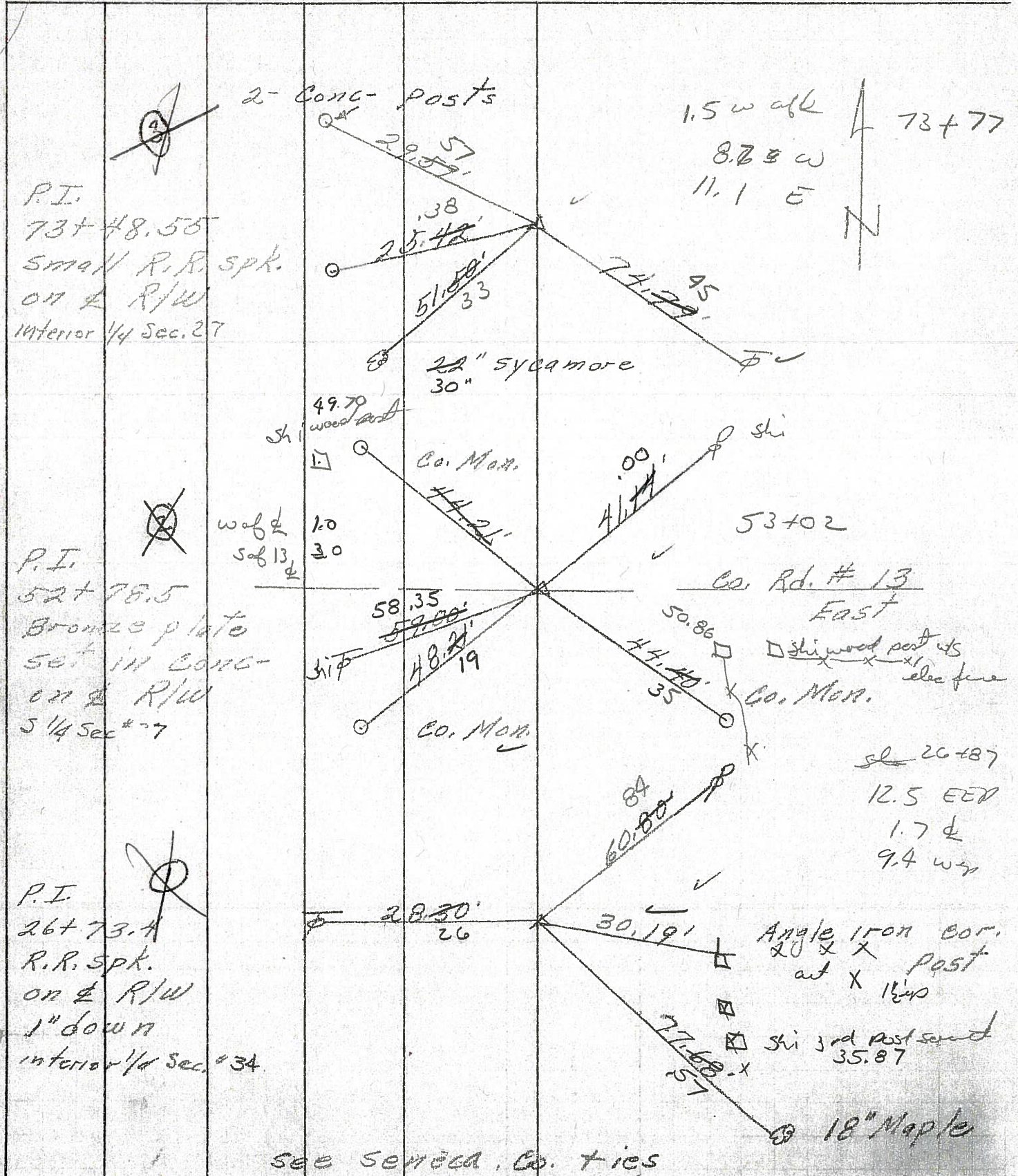
PERSONNEL	TITLE	PERSONNEL	TITLE	COUNTY	DATE	WEATHER	TEMP.
Schnsider		Vinson		SANDUSKY	7-29-71	Fair	75°
Mosser				S. R. 590			
Barbour				SEC. 34			
Geyman							

DESCRIPTION Seneca Co. Line North JOB NO. _____

③

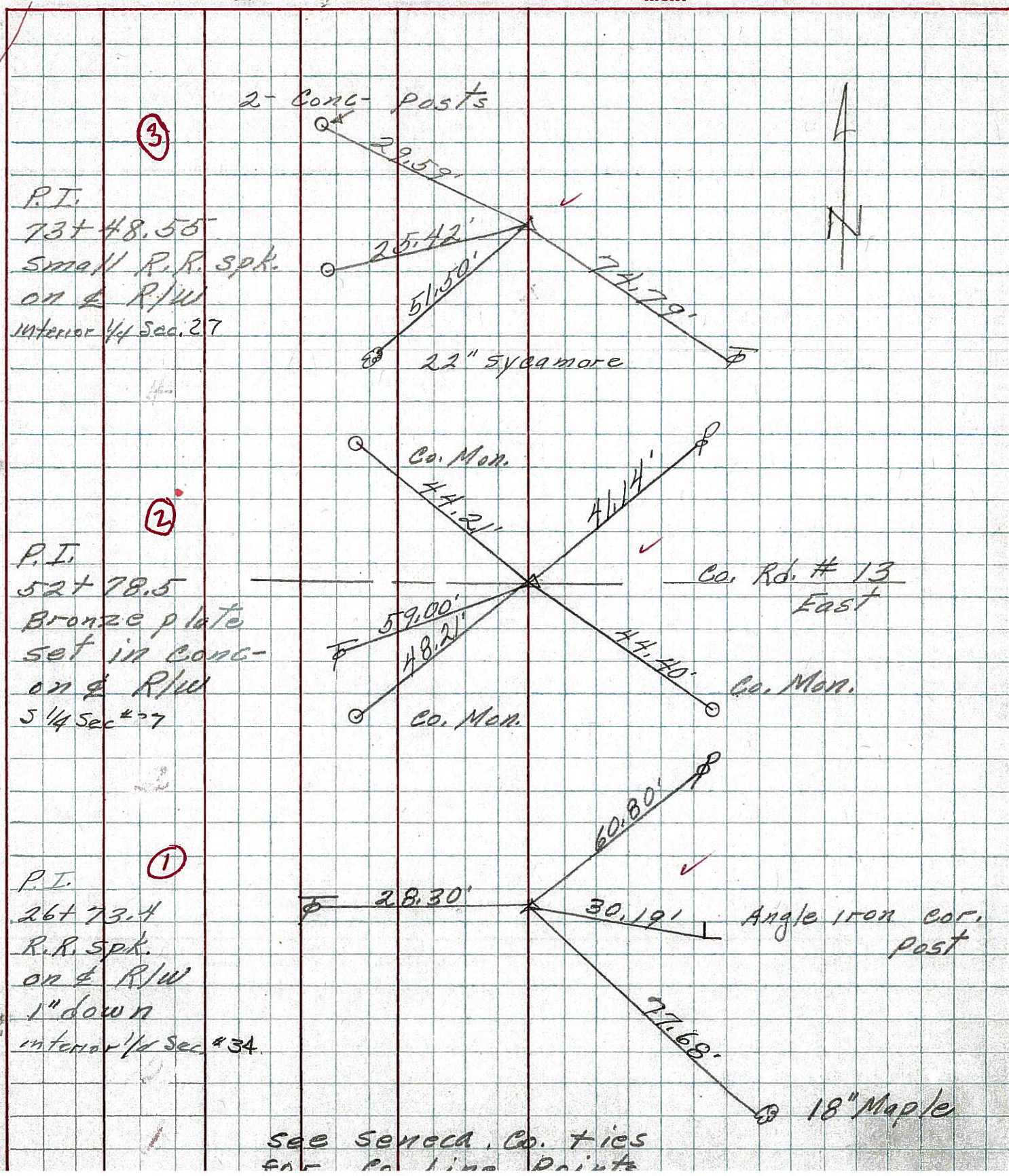
②

①



PERSONNEL	TITLE	PERSONNEL	TITLE	COUNTY	DATE	S. R.	WEATHER	TEMP.
Schnaider		Vinson		Sandusky	7-29-71	590	Fair	75°
Mosser								
Barbour								
Geyman								

DESCRIPTION Seneca Co. Line North JOB NO. _____



PERSONNEL TITLE PERSONNEL TITLE COUNTY Sandusky DATE 4-1-68
 Schneider _____
 Mosser _____ S. R. 590 WEATHER Cool
 Barbour _____ SEC. Seneca Co. Line North TEMP. 40°
 DESCRIPTION Ties for Control Points JOB NO.

