

O.D.O.T. DISTRICT 2 SURVEY OFFICE (USE ONLY)

PERSONNEL

REFERENCE NO. 3

SHEET 5 OF 33

NOTES TRENKA
 H.C. RHOADES
 R.C. TRENKA

DATE 6-11-18
 WEATHER CLOUDY
 TEMP. 64°

ROUTE SR 590
 COUNTY SANDUSKY
 TOWNSHIP JACKSON
 SECTION 27
 T 4 N R 14 E

DWG BY AUBLE PID 95765

TYPE MONUMENT MAG/WASHER

ON SURFACE - ~~BELOW~~ ON

OFFSET \varnothing PAVEMENT 1.5' LT : ~~RT~~
8.9' TO LT EDGE PAVEMENT

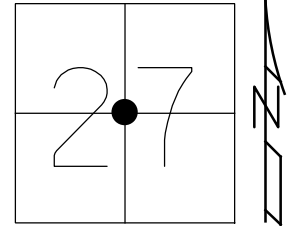
STATION: 73+53

HORZ.DATUM: NAD83(2011)

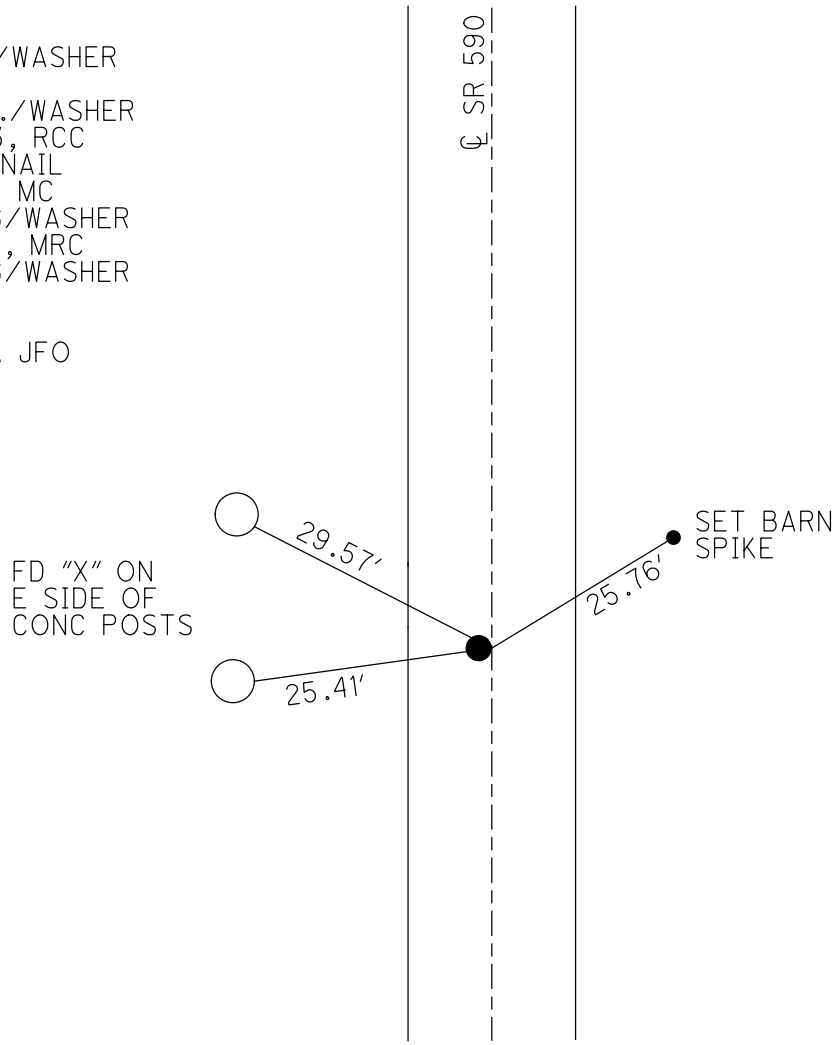
GEOID: 2012A

GRID: NORTHING: 586126.785

EASTING: 1766405.537



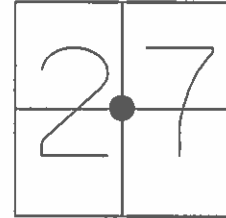
RECORD:
 FD P.K./WASHER
 5/4/82
 SET P.K./WASHER
 6/29/93, RCC
 FD MAG NAIL
 7/21/10, MC
 SET MAG/WASHER
 10/19/10, MRC
 SET MAG/WASHER
 1" DOWN
 REF3
 8-23-19, JFO



O.D.O.T. DISTRICT 2 SURVEY OFFICE (USE ONLY)

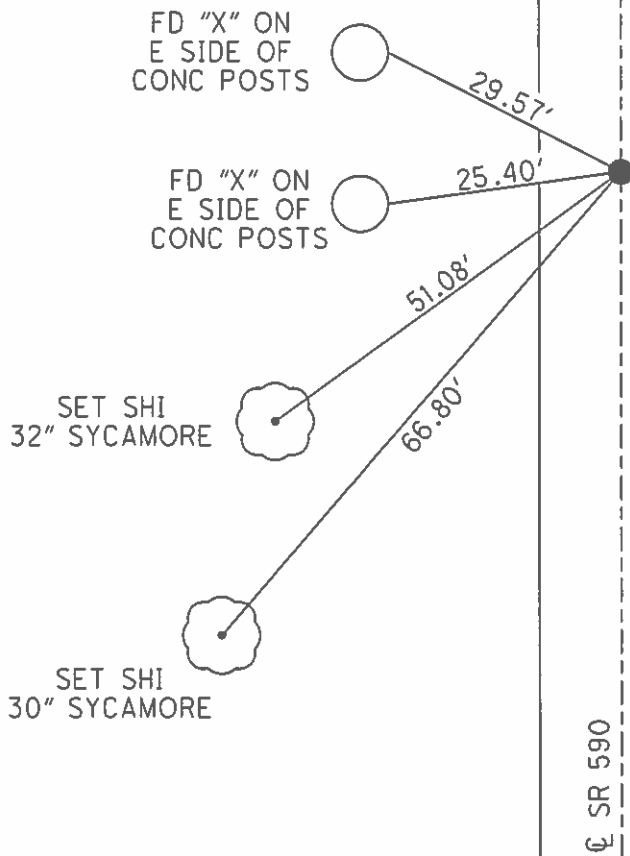
PERSONNEL _____ REFERENCE NO. 3 SHEET 5 OF 33
 NOTES CANTERBURY DATE 07/21/10 ROUTE SR 590
 H.C. HUSS WEATHER FAIR COUNTY SANDUSKY
 R.C. HARBAUGH TEMP. +86° TOWNSHIP JACKSON
 _____ SECTION 27
 _____ T 4 N R 14 E

TYPE MONUMENT _____ MAG _____
 ON SURFACE - ~~BELOW~~ _____ ON _____
 LEFT - ~~C PAV'T~~ - ~~RIGHT~~ _____ 1.5'
8.9' TO LT EDGE PAVEMENT
 S.L.M. _____ 73+53



GRID: NORTHING: 586126.813 EASTING: 1766405.395

RECORD:
 FD PK/WASHER
 ON SURFACE 05/04/82
 SET PK/WASHER 06/29/93 RCC
 SET MAG/WASHER 10/19/10 MRC



O.D.O.T. DISTRICT 2 SURVEY OFFICE

PERSONNEL

REFERENCE NO. 3

SHEET 3 OF 18

NOTES RIFFLE

H.C. BARBOUR

DATE 5-18-1993

ROUTE #590

R.C. GEYMAN

WEATHER FAIR

COUNTY SANDUSKY

TEMP. 63

TOWNSHIP JACKSON

SECTION 27

T 4 N R 14 E

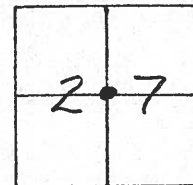
TYPE MONUMENT PK/WASHER

ON SURFACE - ~~BELOW~~ ON

LEFT-℄ PAV'T. - ~~RIGHT~~ 1'

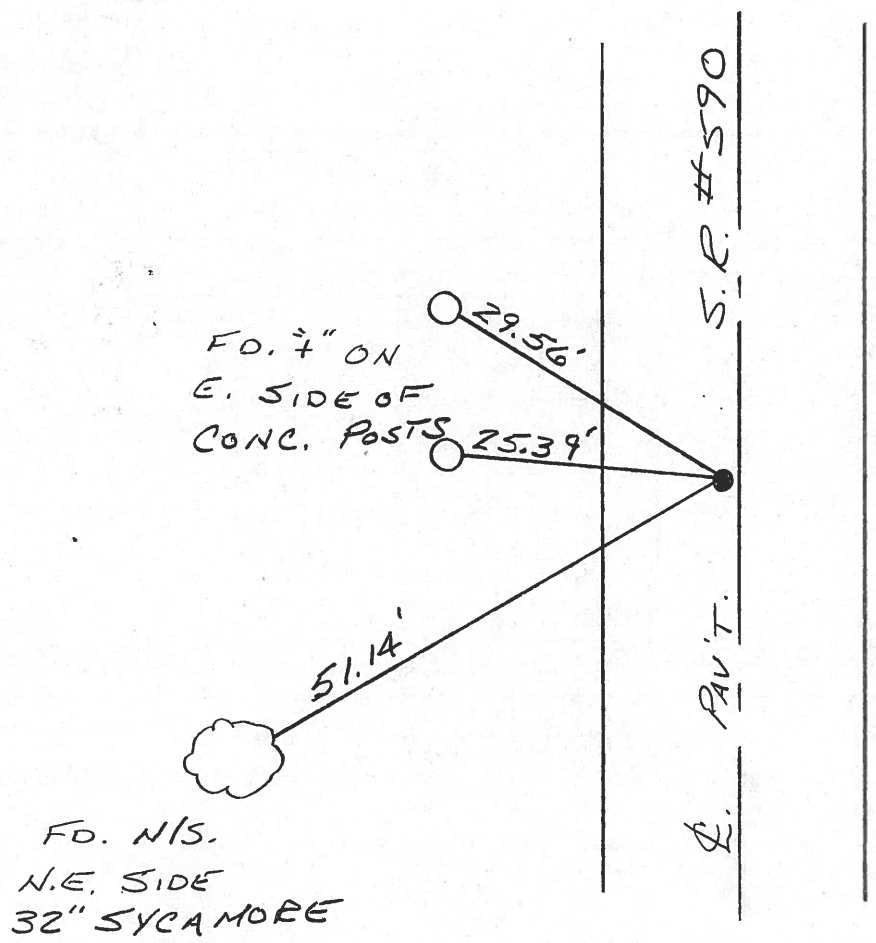
10' TO LT. EDGE PAVEMENT

S.L.M. 73+53



RECORD: 5-4-1982
STA. 73+77 (73+48.55)
FD. PK/WASHER @ SURFACE

SET PK/WASHER
 6-29-1993
 RCC



OD.O.T. DISTRICT 2 SURVEY OFFICE

SHEET _____ OF _____

County Sandusky S.R. 590

Date 5-4-82

Township Jackson

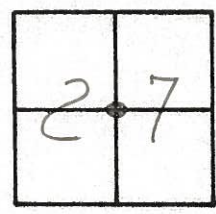
Weather Clear

Section 27

Temp. +75°

T4N, R14E

Personnel Hoffman



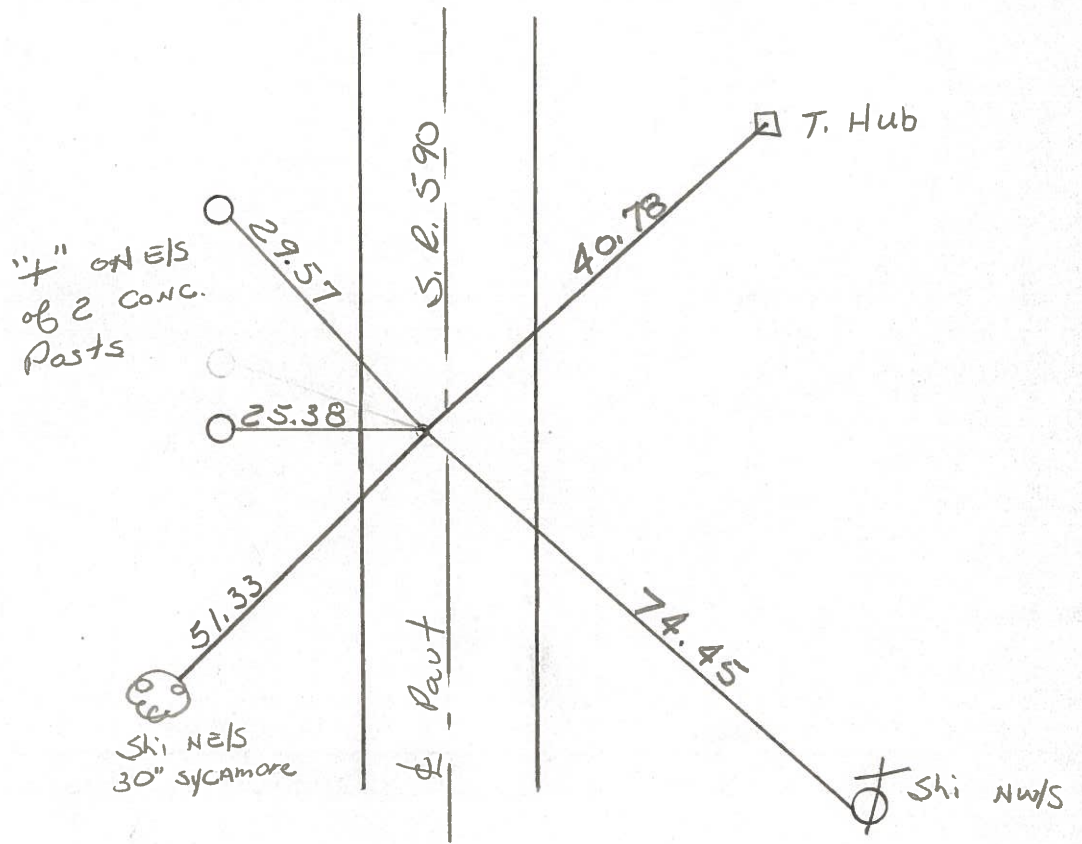
#3

Crew

Fd P.K./Washer @ Surface = 73+48.55

S.L.M. Sta ± 73+77

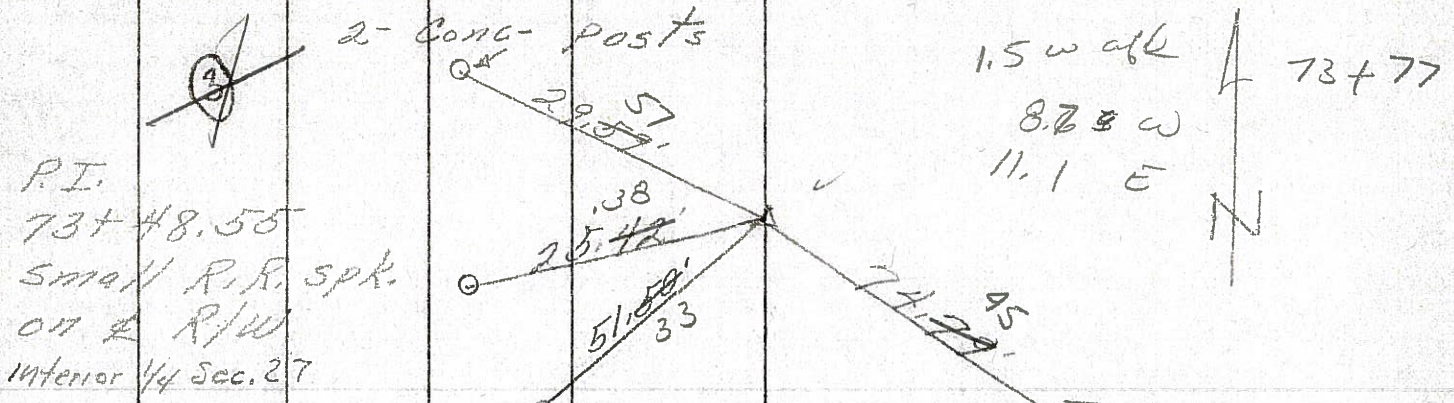
- 1.5' Lt. of & Pavt
- 8.7' TO W. E.P.
- 11.1' TO E. E.P.



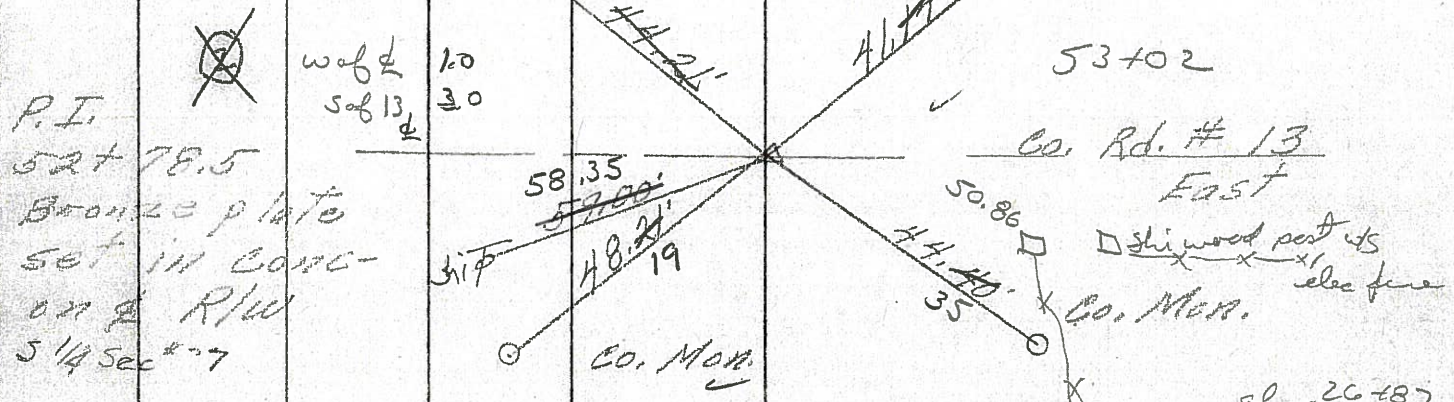
PERSONNEL	TITLE	PERSONNEL	TITLE	COUNTY	DATE	WEATHER	TEMP.
Schneider		Vinson		Sandusky	7-29-71	Fair	75°
Mosser				S. R. 590			
Barbour				SEC. 34			
Geyman							

DESCRIPTION Seneca Co. Line North JOB NO. _____

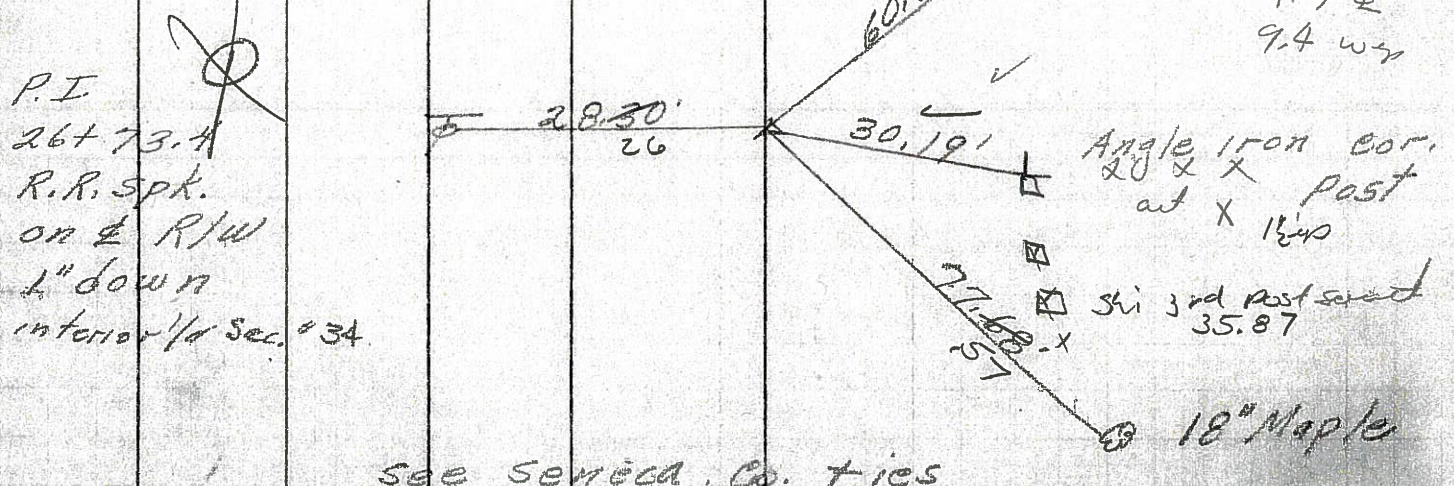
③



②

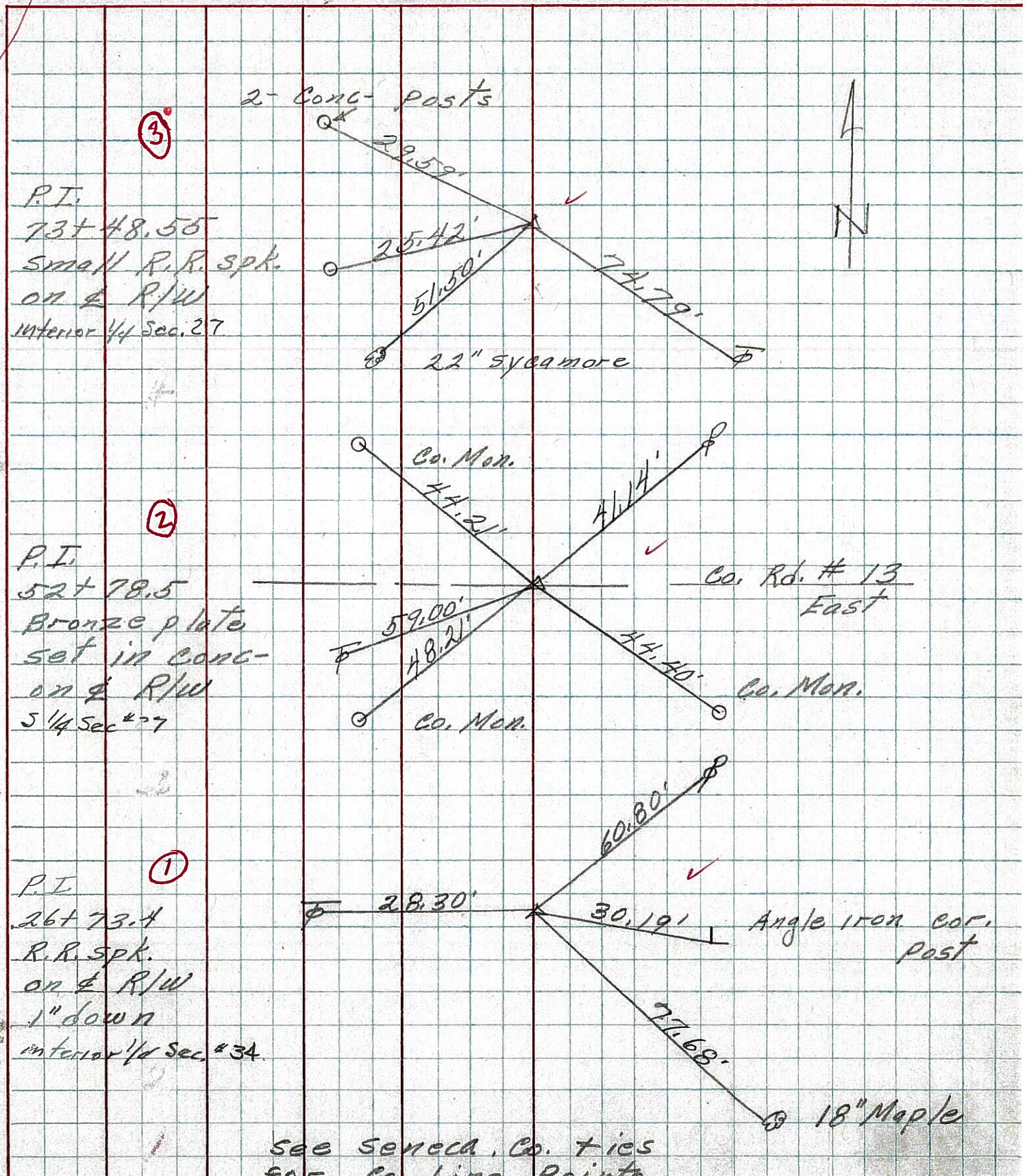


①



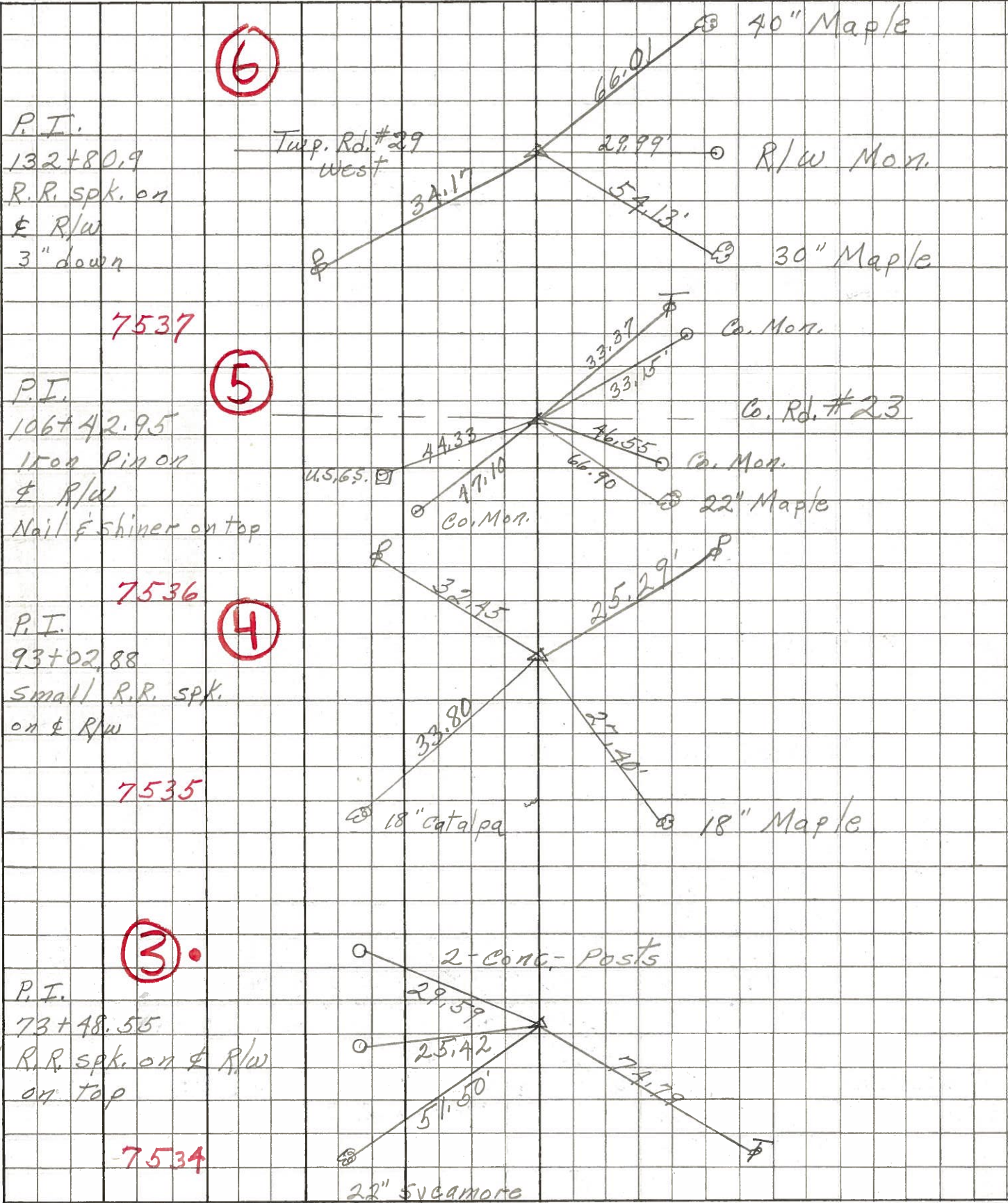
see Seneca Co. ties

PERSONNEL	TITLE	PERSONNEL	TITLE	COUNTY	DATE	WEATHER	TEMP.
<u>Schnaider</u>		<u>Vinson</u>		<u>Sandusky</u>	<u>7-29-71</u>	<u>Fair</u>	<u>75°</u>
<u>Mosser</u>				S. R. <u>590</u>			
<u>Barbour</u>				SEC. <u>34</u>			
<u>Geyman</u>							
DESCRIPTION <u>Seneca Co. Line North</u>				JOB NO.			
LEFT		CENTER LINE		RIGHT			



PERSONNEL TITLE PERSONNEL TITLE
 Schnöder COUNTY Sandusky DATE 4-1-68
 Mosser S. R. 590 WEATHER Cool
 Barbour SEC. Sen. Co. Line North TEMP. 45°

DESCRIPTION Ties for Control Points JOB NO.



small