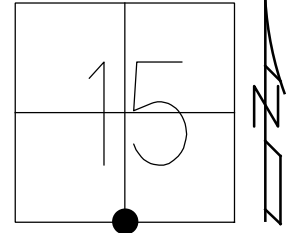


O.D.O.T. DISTRICT 2 SURVEY OFFICE (USE ONLY)

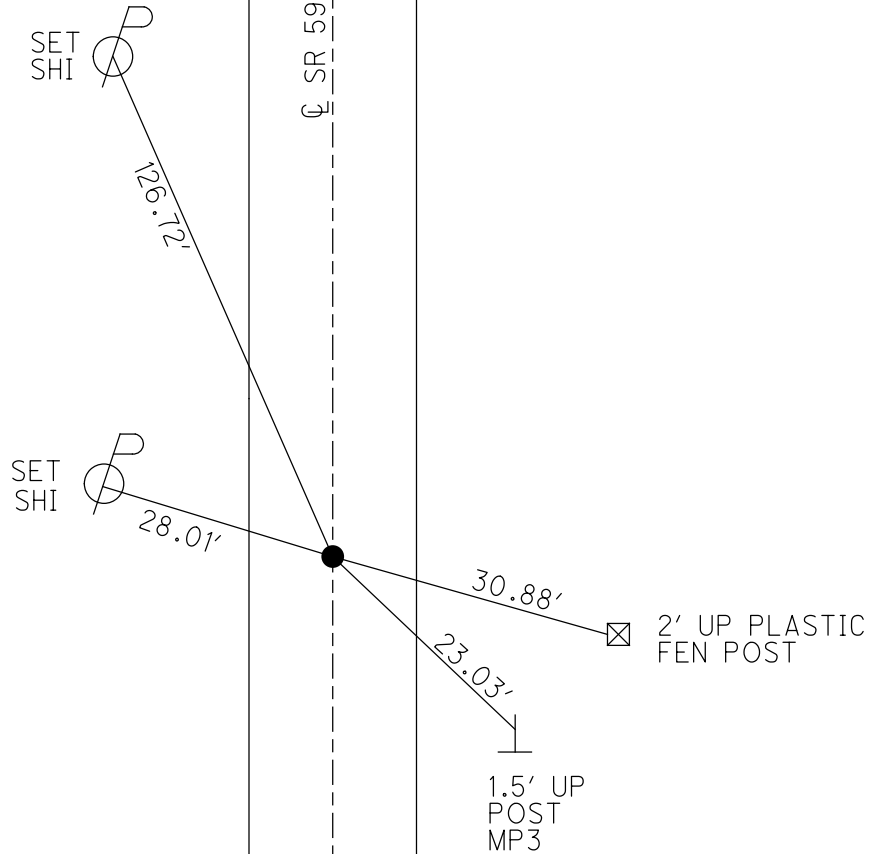
PERSONNEL _____ REFERENCE NO. 6 C SHEET 11 OF 33
 NOTES TRENKA DATE 6-11-18 ROUTE SR 590
 H.C. RHOADES WEATHER CLOUDY COUNTY SANDUSKY
 R.C. TRENKA TEMP. 68° TOWNSHIP JACKSON
 DWG BY AUBLE PID 95765 SECTION 15
 T 4 N R 14 E

TYPE MONUMENT MAG/WASHER
 ON SURFACE - ~~BELOW~~ ON
 OFFSET ☐ PAVEMENT ON LT : RT
10.5' TO LT EDGE PAVEMENT
 STATION: 159+77

HORIZ.DATUM: NAD83(2011) GEOID: 2012A
 GRID: NORTHING: 594746.919 EASTING: 1766407.565



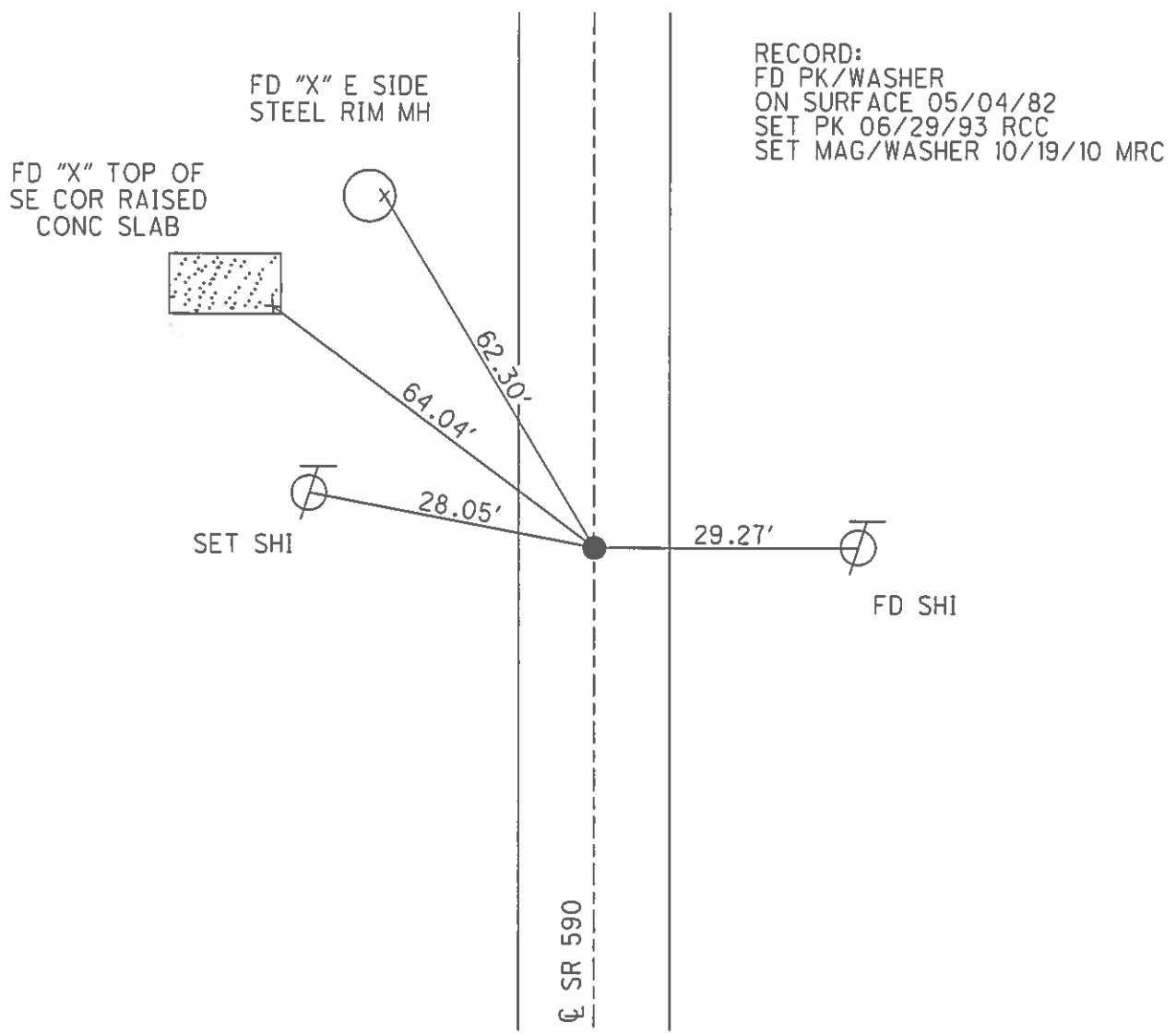
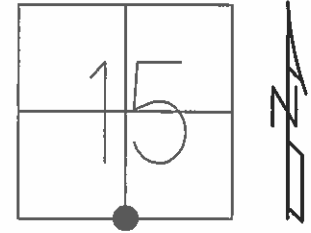
RECORD:
 FD P.K./WASHER
 5/4/82
 SET P.K./WASHER
 6/29/93, RCC
 FD P.K./WASHER
 7/20/10, MC
 SET MAG/WASHER
 10/19/10, MRC
 FD MAG/WASHER
 1" DOWN
 REFC6
 8-23-19, JFO



O.D.O.T. DISTRICT 2 SURVEY OFFICE (USE ONLY)

PERSONNEL _____ REFERENCE NO. 6 C SHEET 11 OF 33
 NOTES HUSS DATE 07/20/10 ROUTE SR 590
 H.C. FINTEL WEATHER FAIR COUNTY SANDUSKY
 R.C. CANTERBURY TEMP. +86° TOWNSHIP JACKSON
 _____ SECTION 15
 _____ T 4 N R 14 E

TYPE MONUMENT _____ PK/WASHER _____
 ON SURFACE - ~~BELOW~~ _____ ON _____
~~LEFT~~ - ☉ PAV'T - ~~RIGHT~~ _____ ON _____
10.5' TO RT EDGE PAVEMENT
 S.L.M. _____ 159+77
 GRID: NORTHING: 594746.945 EASTING: 1766407.489



O.D.O.T. DISTRICT 2 SURVEY OFFICE

PERSONNEL

REFERENCE NO. 6-C

SHEET 9 OF 18

NOTES CHENEY

H.C. RIPPLE

R.C. BARBOUR

GEYMAN

DATE 5-24-1993

WEATHER CLOUDY

TEMP. 65°

ROUTE # 590

COUNTY SANDUSKY

TOWNSHIP JACKSON

SECTION 15

T 4 N R 14 E

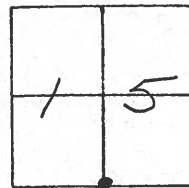
TYPE MONUMENT PK/WASHER

ON SURFACE - ~~BELOW~~ ON

~~LEFT~~ - RIGHT PAV'T. - ON

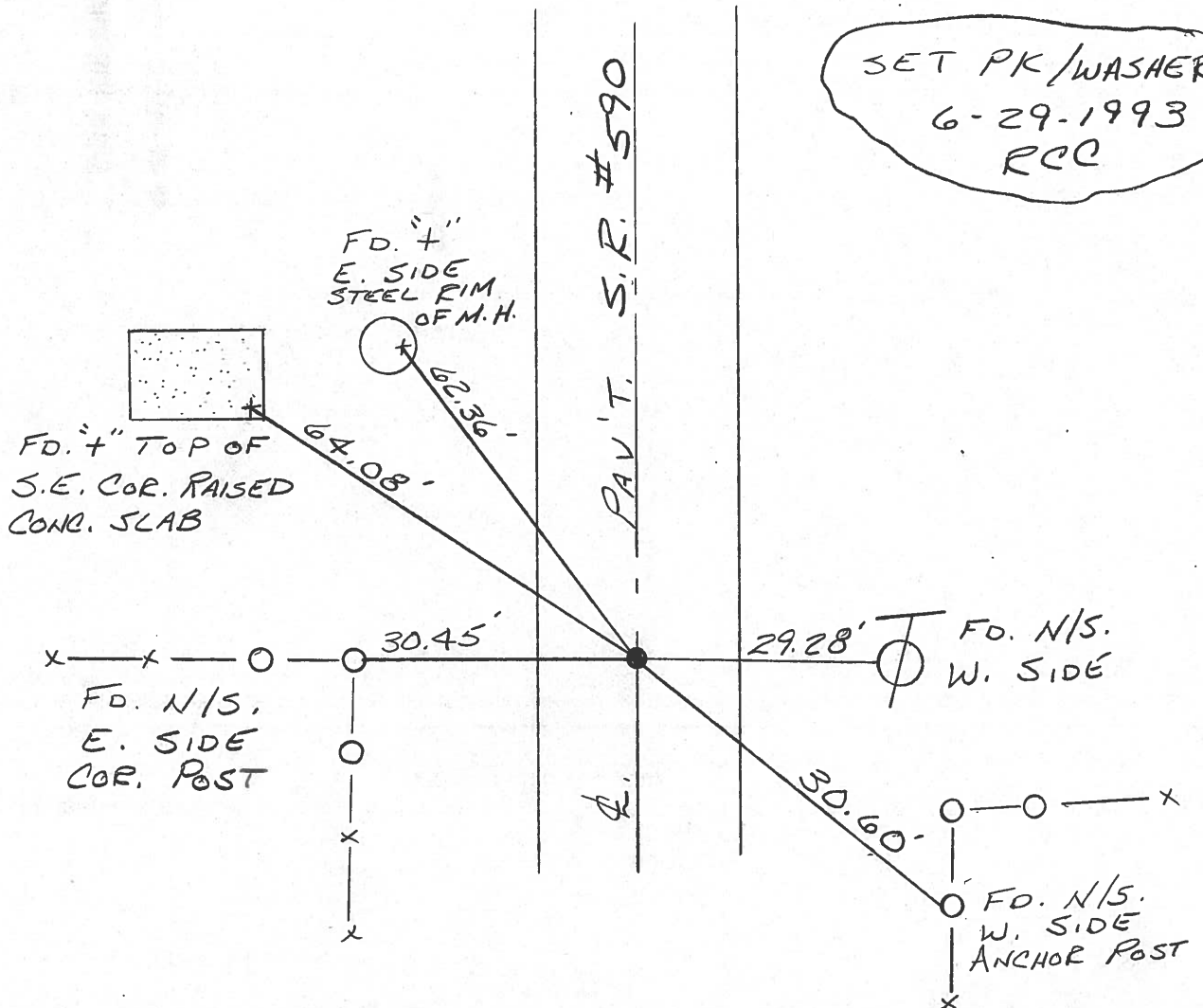
10.5 TO LT. EDGE PAVEMENT

S.L.M. 159+77



RECORD: 5-4-1982
 STA. 160+29
 FD. PK/WASHER @ SURFACE

SET PK/WASHER
 6-29-1993
 RCC



County Sandusky S.R. 590

Township Jackson

Section 15

T4N, R14E

Personnel Hoffman

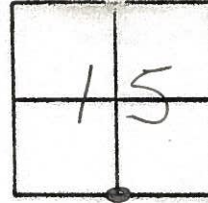
E

Crew

Date 5-4-82

Weather Clear

Temp. +80°



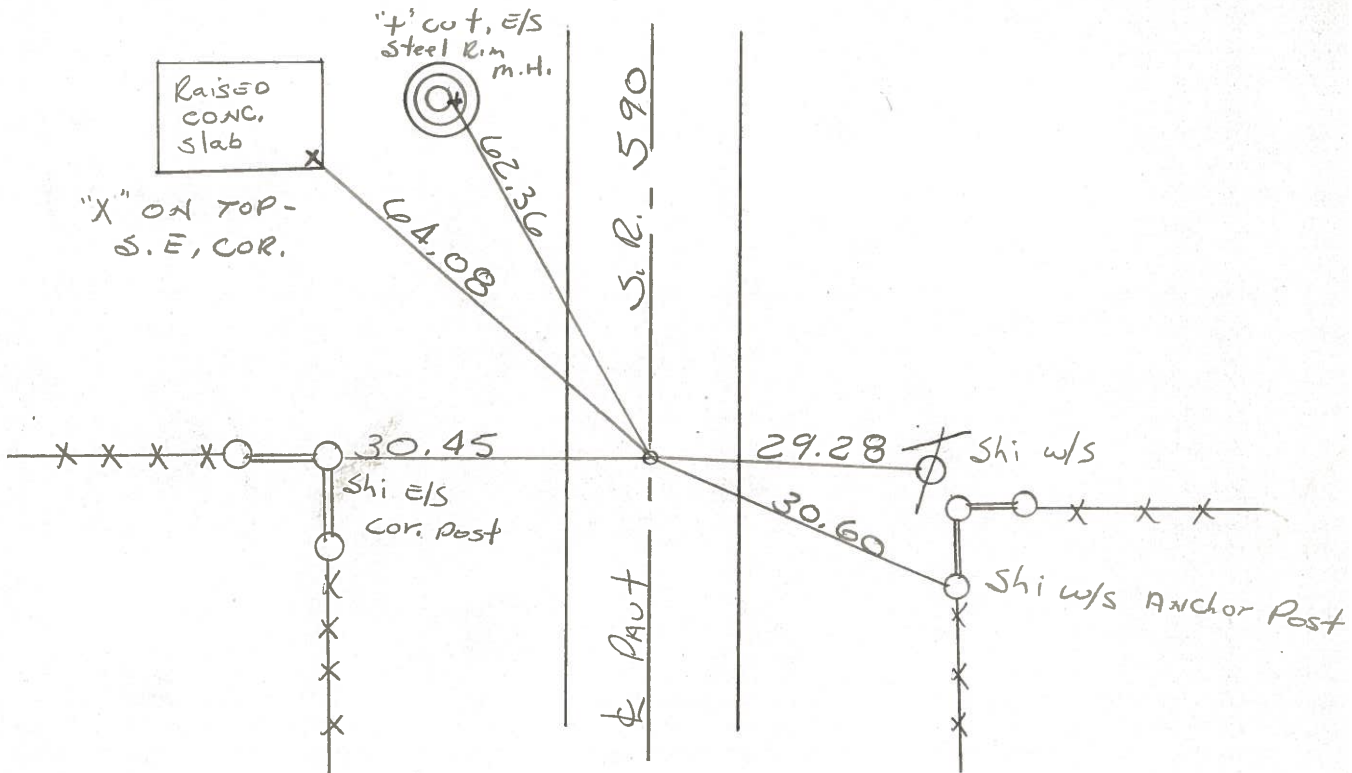
#6-C

Fd P.K. / washer @ surface

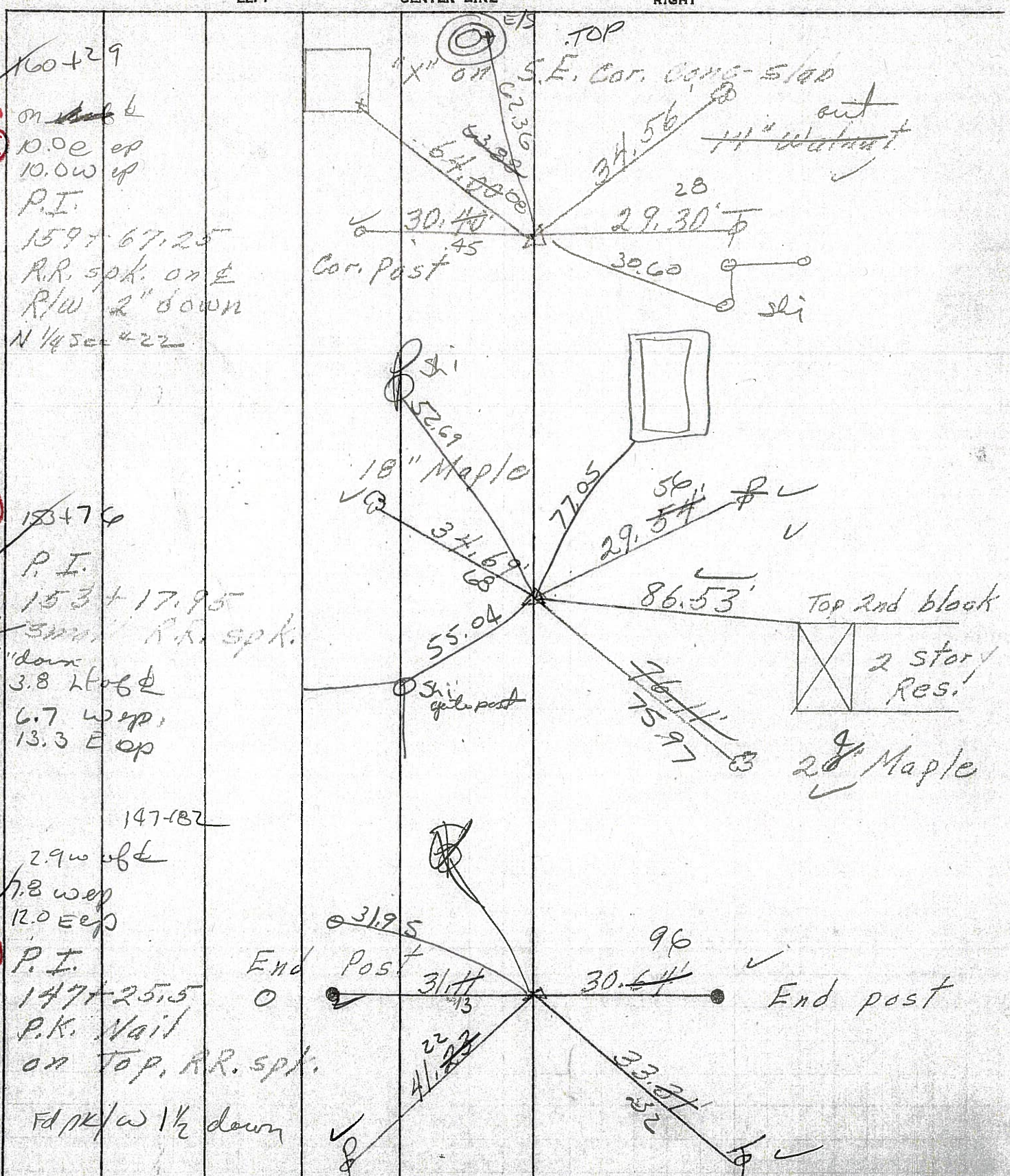
S.L.M. Sta ± 160+29

10.0 TO W. EA.

10.0 TO E. EA.



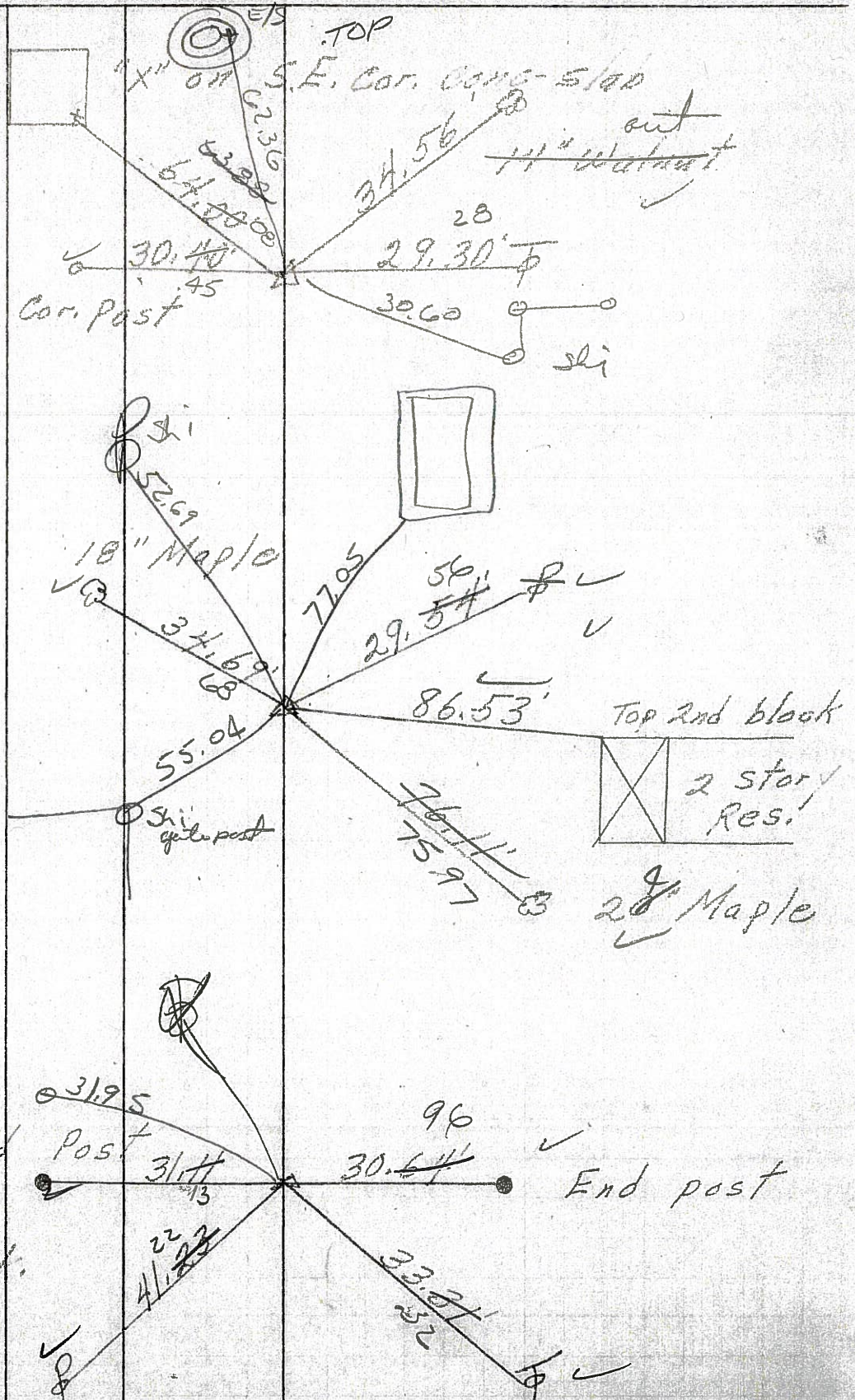
PERSONNEL	TITLE	PERSONNEL	TITLE	COUNTY	DATE
				Sandusky	7-29-71
				S. R. 590	WEATHER Fair
				SEC. 27 E 22	TEMP. 75°
DESCRIPTION				JOB NO.	
Seneca, Co. Line North					



6-C
 160+29
 on ~~block~~
 10.00 ep
 10.00 w up
 P.I.
 159+67.25
 R.R. spk. on E
 R/W 2" down
 N 1/4 sec 22

6-B
 153+76
 P.I.
 153+17.95
 R.R. spk.
 1/2" down
 3.8 L to B
 6.7 W up
 13.3 E up

6-A
 147+182
 2.9 w of E
 7.8 w up
 12.0 E up
 P.I.
 147+25.5
 P.K. Nail
 on Top, R.R. spk.
 Fd R/W 1/2 down



PERSONNEL TITLE PERSONNEL TITLE

COUNTY Sandusky DATE 7-29-71

S. R. 590 WEATHER Fair

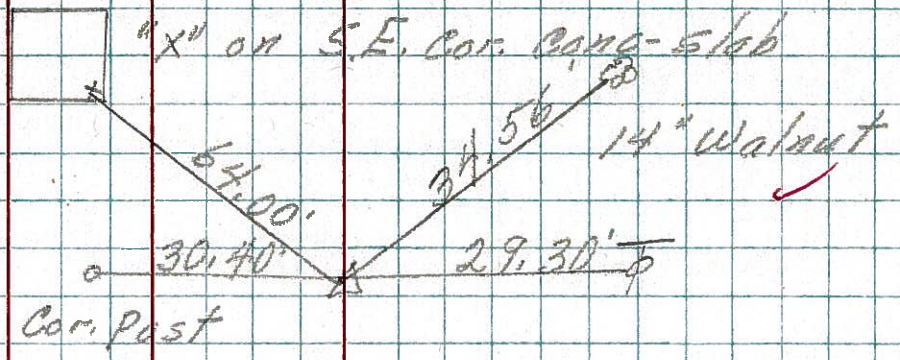
SEC. 27 & 22 TEMP. 75°

DESCRIPTION Seneca Co. Line North JOB NO.

LEFT CENTER LINE RIGHT

6-C

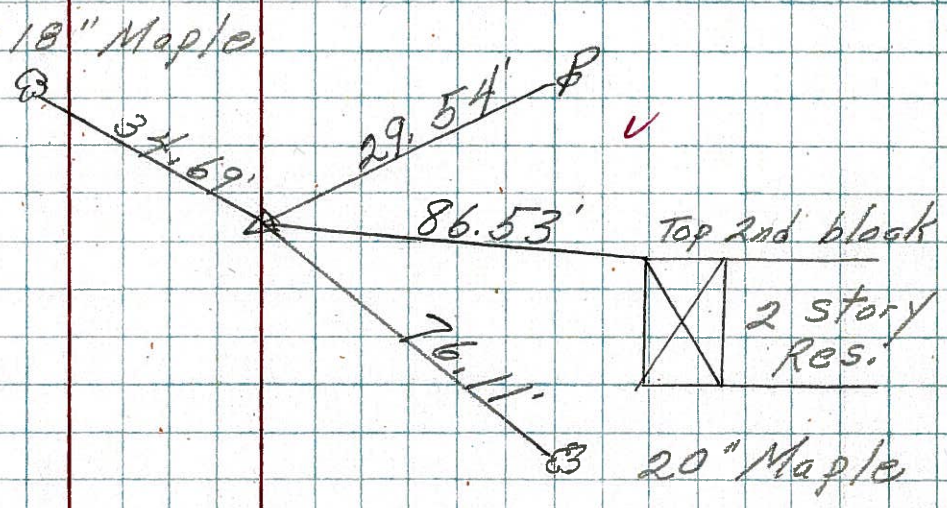
P.T.
159 + 67.25
R.R. spk. on E
R/W 2" down
N 1/4 Sec. 422



10

6-B

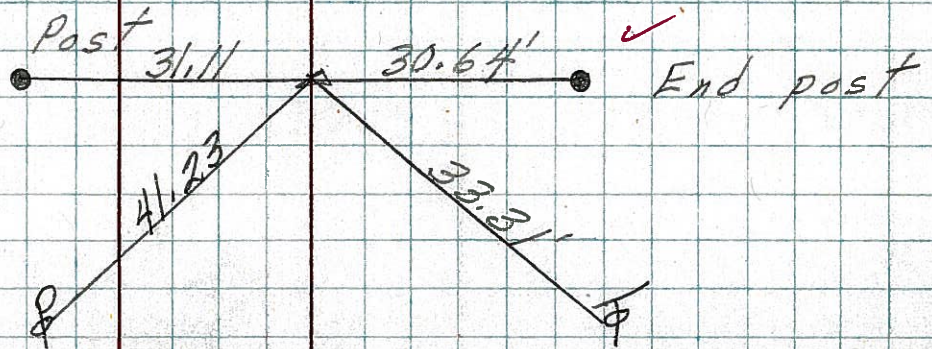
P.I.
153 + 17.95
small R.R. spk.



8

6-A

P.I.
147 + 25.5
P.K. Nail
on Top, R.R. spk.



3

PERSONNEL	TITLE	PERSONNEL	TITLE	COUNTY	DATE
Schneider		Potts		Sandusky	4-3-68
Mosser				S. R.	590
Barbour				SEC. Sen. Co. Line North	WEATHER Cloudy
Reddina					TEMP. 50°

DESCRIPTION Ties for Control Points JOB NO. _____

