

O.D.O.T. DISTRICT 2 SURVEY OFFICE (USE ONLY)

PERSONNEL

REFERENCE NO. 8

SHEET 13 OF 33

NOTES TRENKA

DATE 6-11-18

ROUTE SR 590

H.C. RHOADES

WEATHER CLOUDY

COUNTY SANDUSKY

R.C. TRENKA

TEMP. 68°

TOWNSHIP JACKSON

DWG BY AUBLE

PID 95765

SECTION 15

T 4 N R 14 E

TYPE MONUMENT MAG/WASHER

ON SURFACE - ~~BELOW~~ ON

OFFSET 13.2' C PAVEMENT 3.5' ~~LT~~ : RT

13.2' TO N EDGE PAVEMENT

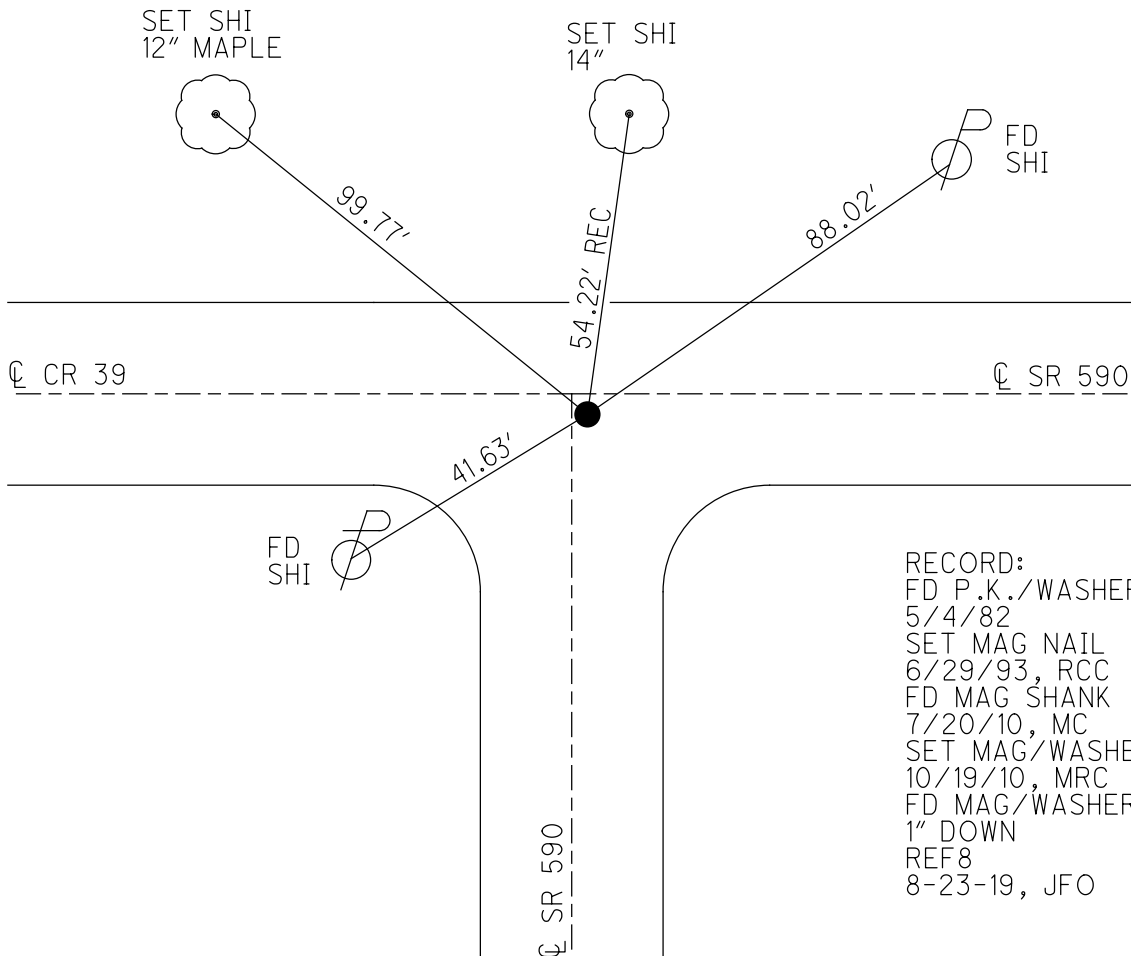
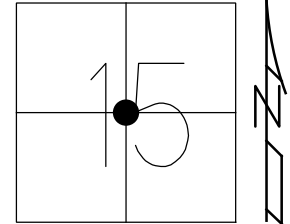
STATION: 186+07

HORIZ.DATUM: NAD83(2011)

GEOID: 2012A

GRID: NORTHING: 597376.093

EASTING: 1766588.889

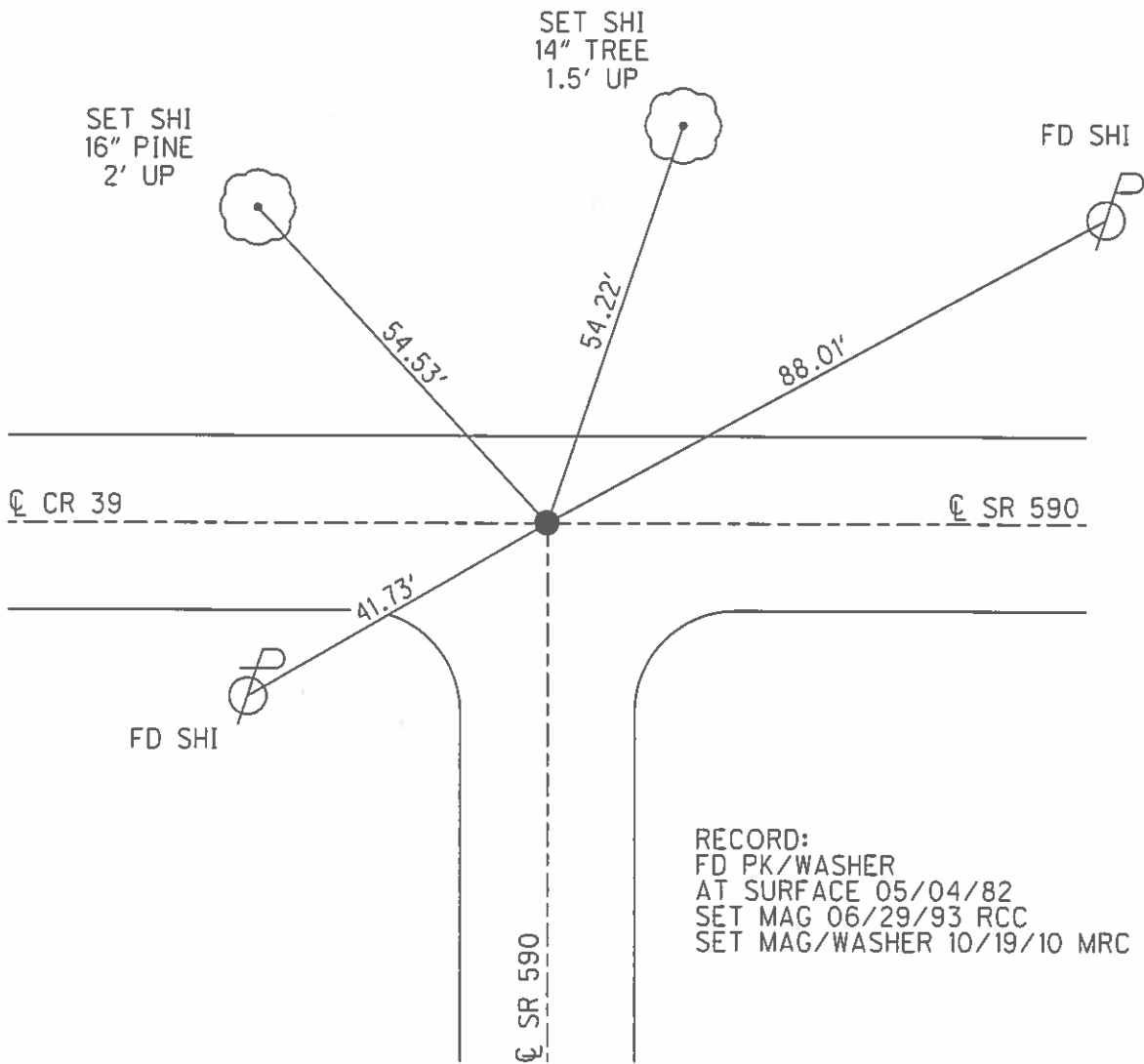
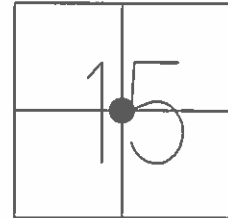


RECORD:
 FD P.K./WASHER
 5/4/82
 SET MAG NAIL
 6/29/93, RCC
 FD MAG SHANK
 7/20/10, MC
 SET MAG/WASHER
 10/19/10, MRC
 FD MAG/WASHER
 1" DOWN
 REF8
 8-23-19, JFO

O.D.O.T. DISTRICT 2 SURVEY OFFICE (USE ONLY)

PERSONNEL _____ REFERENCE NO. 8 SHEET 13 OF 33
 NOTES HUSS DATE 07/20/10 ROUTE SR 590
 H.C. FINTEL WEATHER FAIR COUNTY SANDUSKY
 R.C. CANTERBURY TEMP. +85° TOWNSHIP JACKSON
 _____ SECTION 15
 _____ T 4 N R 15 E

TYPE MONUMENT _____ SHANK _____
 ON SURFACE - ~~BELOW~~ _____ ON _____
 LEFT - ☉ PAV'T - RIGHT 3.5' OF E-W ☉, ON CENTER 590
13.2' TO N EDGE PAVEMENT
 S.L.M. _____ 186+07
 GRID: NORTHING: 597376.146 EASTING: 1766588.793



O.D.O.T. DISTRICT 2 SURVEY OFFICE

PERSONNEL

REFERENCE NO. 8

SHEET 11 OF 18

NOTES CHENEY

H.C. RIPPLE

DATE 5-24-1993

ROUTE # 590

R.C. BARBOUR

WEATHER CLOUDY

COUNTY SANDUSKY

GEYMAN

TEMP. 65°

TOWNSHIP JACKSON

SECTION 15

T 4 N R 15 E

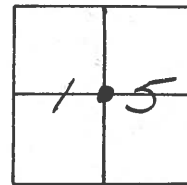
TYPE MONUMENT PK/WASHER

ON SURFACE - ~~BELOW~~ ON

~~LEFT - & PAV'T. - RIGHT~~ ON TO SOUTH
3' S. OF E.-W. &

13' TO N. EDGE PAVEMENT

S.L.M. 186+07

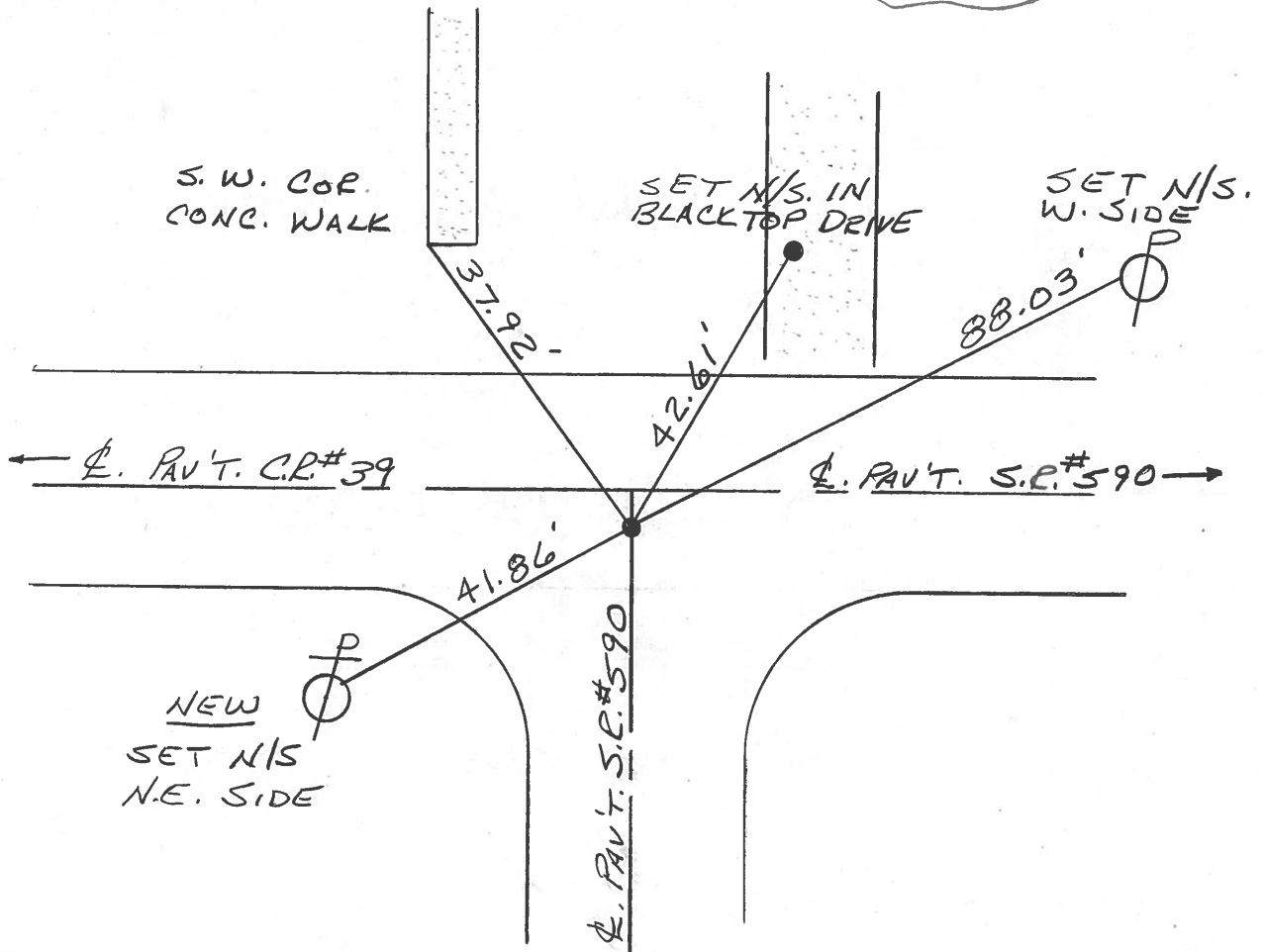


RECORD: 5-5-1982

STA. 186+73

FO. PK/WASHER @ SURFACE

SET PK/WASHER
6-29-1993
R.C.R.



County SANDUSKY S.R. 590

Date 5-5-82

Township JACKSON

Weather cloudy

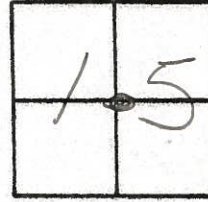
Section 15

Temp. +60°

T4N, R4E

Personnel HOFFMAN

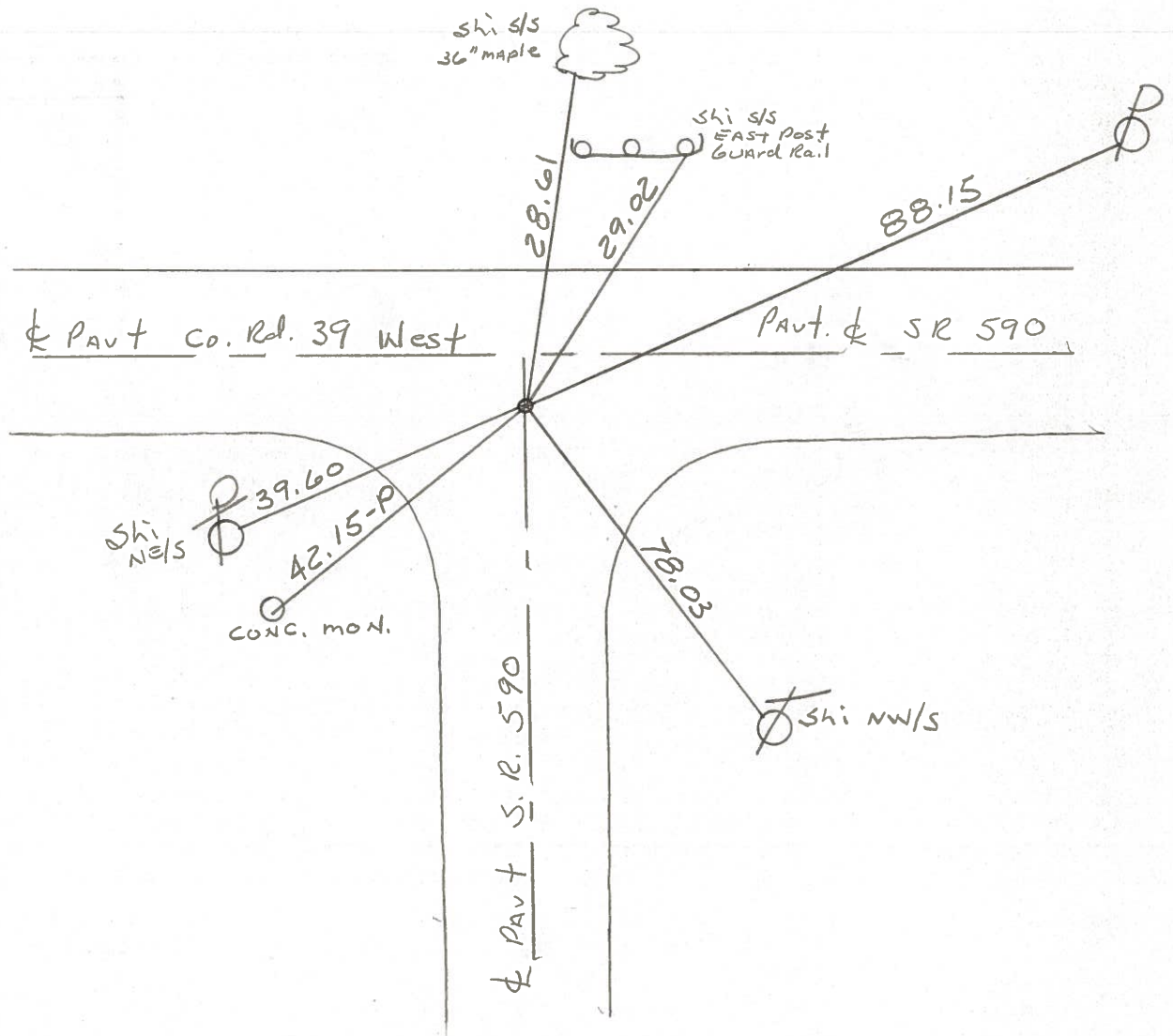
8 Crew



Fd. P.K. / Washer @ Surface

S.L.M. Sta. ± 186 + 7.

12.7' TO N.E.P.
ON & TO SOUTH
4.0' S. of & E-W



PERSONNEL TITLE PERSONNEL TITLE

COUNTY Sandusky DATE 7-30-71

S. R. 590 WEATHER Rain

SEC. 15 E 14 TEMP 79°

DESCRIPTION Seneca Co. Line North JOB NO.

LEFT CENTER LINE RIGHT

9

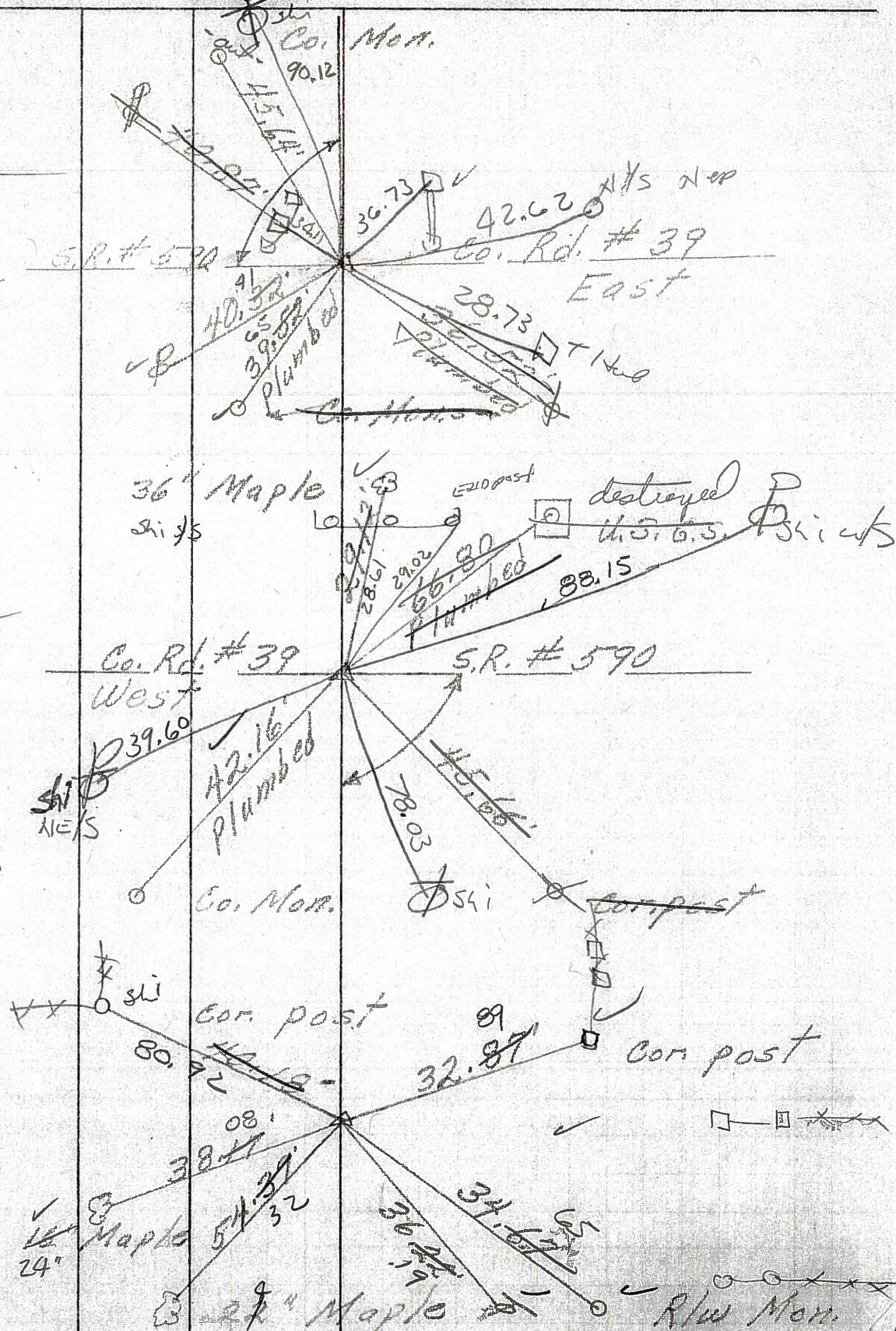
P.I. 210+17.4
Spt. in Hub
PK/W
1.6 w ob & N
on & E & W
8.2 to sep

8

186+73
P.I. 186+02.7
R.R. Spt.
on & R/W
2' down
PK/W with S.
4.0 s ob & E & W
12.7 to sep

6-D

P.I. 175+37
174+70.5
R.R. Spt.
on & R/W
2.6 to ob &
7.7 w up
12.1 to sep



PERSONNEL TITLE PERSONNEL TITLE

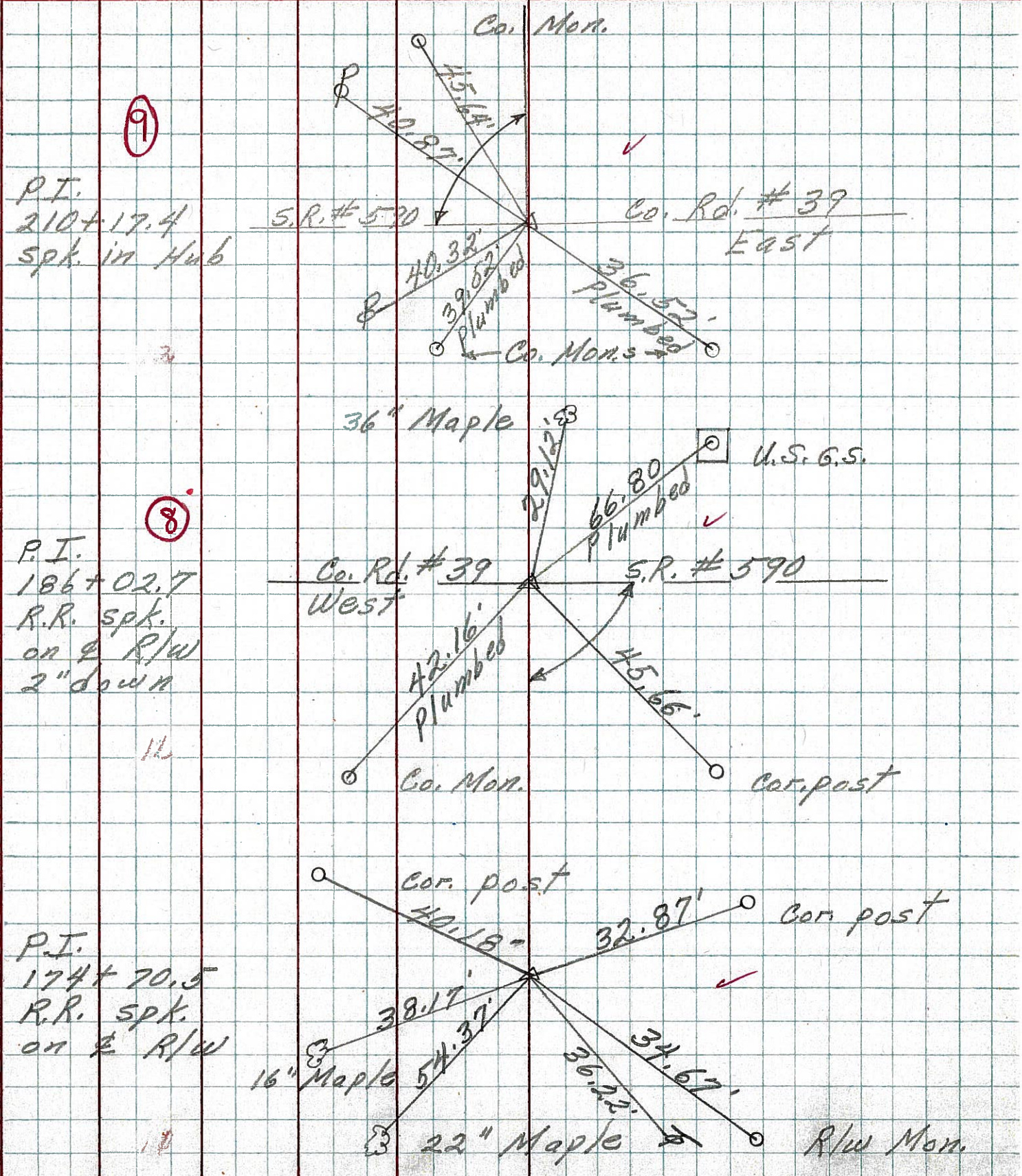
COUNTY Sandusky DATE 7-30-71

S. R. 590 WEATHER Rain

SEC. 15 & 14 TEMP 70°

DESCRIPTION Seneca, Co. Line North JOB NO. _____

LEFT CENTER LINE RIGHT



PERSONNEL TITLE PERSONNEL TITLE COUNTY Sandusky DATE 4
 Mosser _____ S. R. 590 WEATHER C
 Barbour _____ SEC. Seneca Co. Line North TEMP. _____
 Redding _____ DESCRIPTION Ties for Control JOB NO. _____

