

O.D.O.T. DISTRICT 2 SURVEY OFFICE (USE ONLY)

PERSONNEL

REFERENCE NO. 9 A

SHEET 15 OF 33

NOTES TRENKA

DATE 6-11-18

ROUTE SR 590

H.C. RHOADES

WEATHER CLOUDY

COUNTY SANDUSKY

R.C. TRENKA

TEMP. 72°

TOWNSHIP JACKSON

SECTION 15

DWG BY AUBLE PID 95765

T 4 N R 14 E

TYPE MONUMENT MAG/WASHER

ON SURFACE - ~~BELOW~~ ON

OFFSET 0.3' LT : ~~RT~~

10.6' TO RT EDGE PAVEMENT

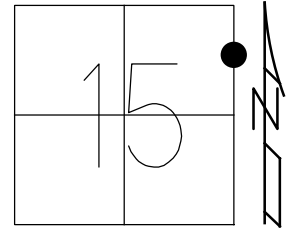
STATION: 227+85

HORZ.DATUM: NAD83(2011)

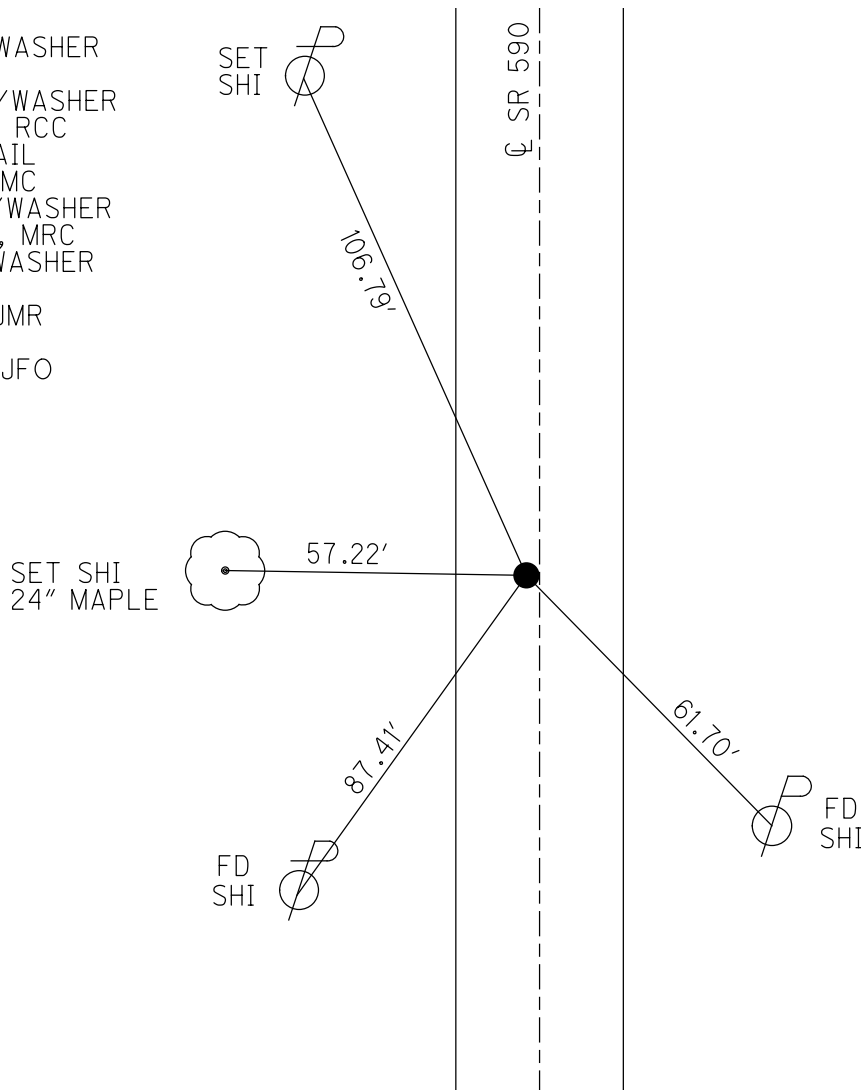
GEOID: 2012A

GRID: NORTHING: 599167.687

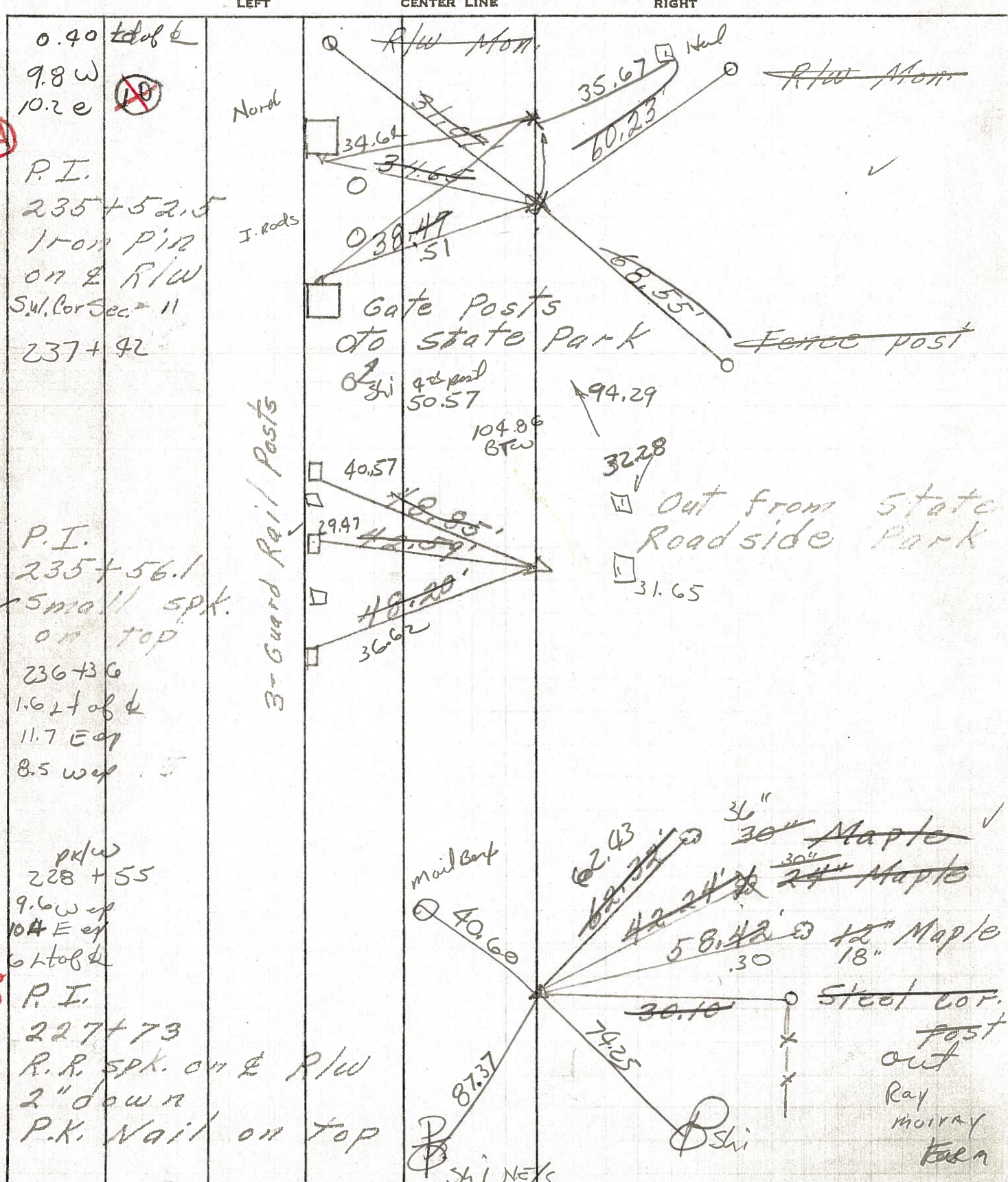
EASTING: 1769025.508



RECORD:
 FD P.K./WASHER
 5/5/82
 SET P.K./WASHER
 6/29/93, RCC
 FD P.K.NAIL
 7/19/10, MC
 SET MAG/WASHER
 10/20/10, MRC
 FD MAG/WASHER
 1" DOWN
 6/11/18, JMR
 REFA9
 8-23-19, JFO



PERSONNEL	TITLE	PERSONNEL	TITLE	COUNTY	DATE
				Sandusky	7-30-7
				S. R. 590	WEATHER Rain
				SEC. 15 E 14	TEMP. 72°
DESCRIPTION Seneca Co. Line North				JOB NO.	



PERSONNEL TITLE PERSONNEL TITLE

COUNTY Sandusky DATE 7-30-71

S. R. 590 WEATHER Rain

SEC. 15 & 14 TEMP. 72°

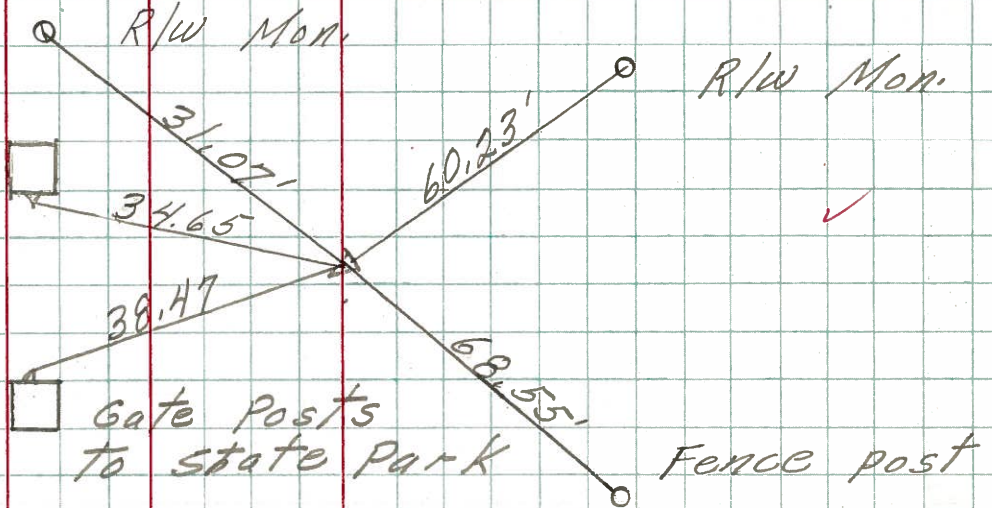
DESCRIPTION Seneca Co. Line North JOB NO.

LEFT CENTER LINE RIGHT

10-A

~~10~~

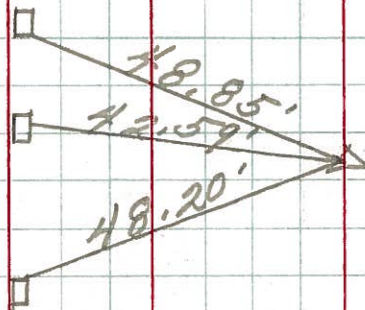
P.I.
235+52.5
Iron pin
on E R/W
Sw. Cor Sec = 11



10

P.I.
235+56.1
Small spk.
on top
Sw. Cor Sec = 11

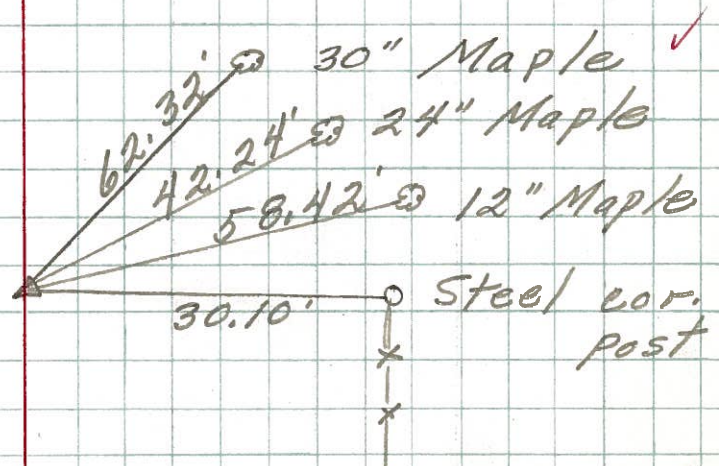
3-Guard Rail Posts



Out from state Roadside Park

9-A

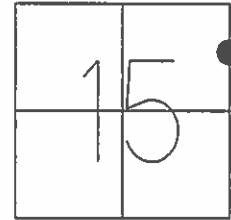
P.I.
227+73
R.R. spk. on E R/W
2" down
P.K. Nail on top



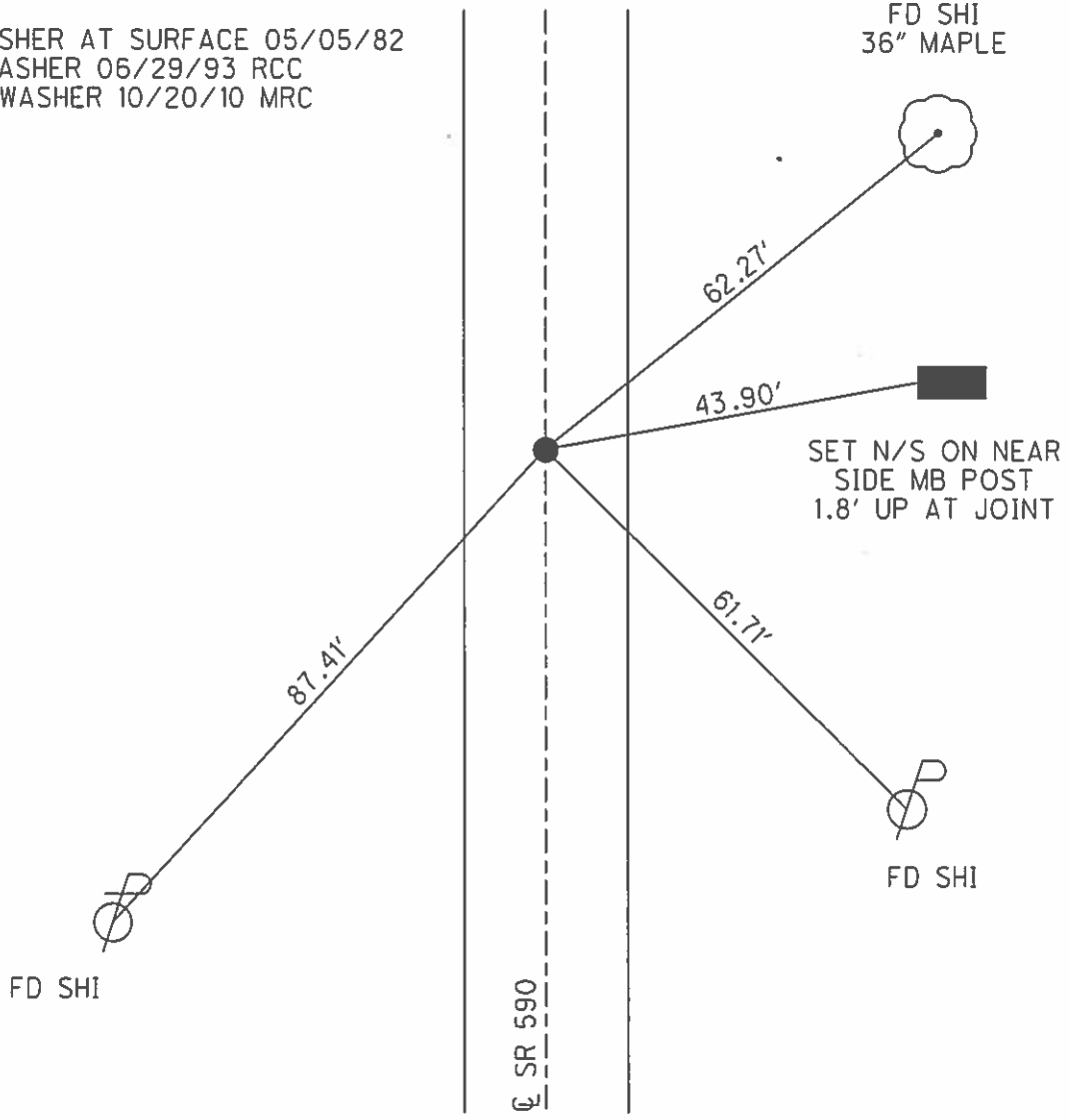
O.D.O.T. DISTRICT 2 SURVEY OFFICE (USE ONLY)

PERSONNEL _____ REFERENCE NO. 9 A SHEET 15 OF 33
 NOTES HUSS DATE 07/19/10 ROUTE SR 590
 H.C. FINTEL WEATHER FAIR COUNTY SANDUSKY
 R.C. _____ TEMP. +84° TOWNSHIP JACKSON
 _____ SECTION 15
 _____ T 4 N R 14 E

TYPE MONUMENT _____ PK _____
 ON SURFACE - ~~BELOW~~ _____ ON _____
 LEFT - ~~C~~ PAV'T - ~~RIGHT~~ _____ 0.3'
10.6' TO RT EDGE PAVEMENT
 S.L.M. _____ 227+85
 GRID: NORTHING: 599167.711 EASTING: 1769025.517



RECORD:
 FD PK/WASHER AT SURFACE 05/05/82
 SET PK/WASHER 06/29/93 RCC
 SET MAG/WASHER 10/20/10 MRC



O.D.O.T. DISTRICT 2 SURVEY OFFICE

PERSONNEL

REFERENCE NO. 9-A

SHEET 13 OF 18

NOTES CHENEY

H.C. RIPPLE

R.C. BARBOUR

GEYMAN

DATE 5-24-1993

WEATHER CLOUDY

TEMP. 65°

ROUTE #590

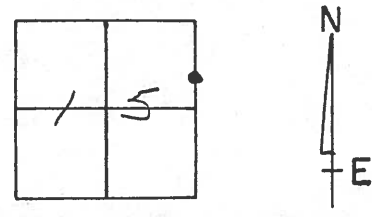
COUNTY SANDUSKY

TOWNSHIP JACKSON

SECTION 15

TANRIE

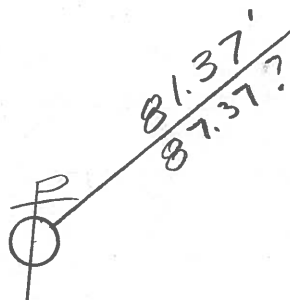
TYPE MONUMENT P.K. NAIL-HEAD OFF
 ON SURFACE - ~~BELOW~~ ON
 LEFT - 0 PAV'T. - ~~RIGHT~~ 0.5'
10' TO LT. EDGE PAVEMENT
 S.L.M. 227+85



RECORD: 5-5-1982
 STA. 328+55
 FD. PK/WASHER @ SURFACE

SET PK/WASHER
 6-29-1993
 RCC

FD. N/S.
 N.E. SIDE

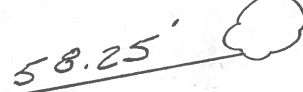


PAV'T.

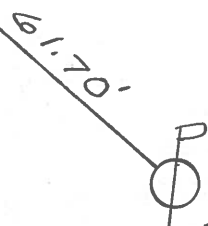
S.R. #590



FD. N/S.
 S.W. SIDE
 36" MAPLE



FD. N/S.
 S.W. SIDE
 18" MAPLE



SET N/S.
 N.W. SIDE

ODOT. DISTRICT 2 SURVEY OFFICE

SHEET _____ OF _____

County SANDUSKY S.R. 590

Township JACKSON

Section 15

T4N, R14E

Personnel HOFFMAN

F

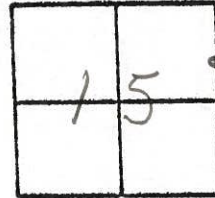
Crew

9-A

Date 5-5-82

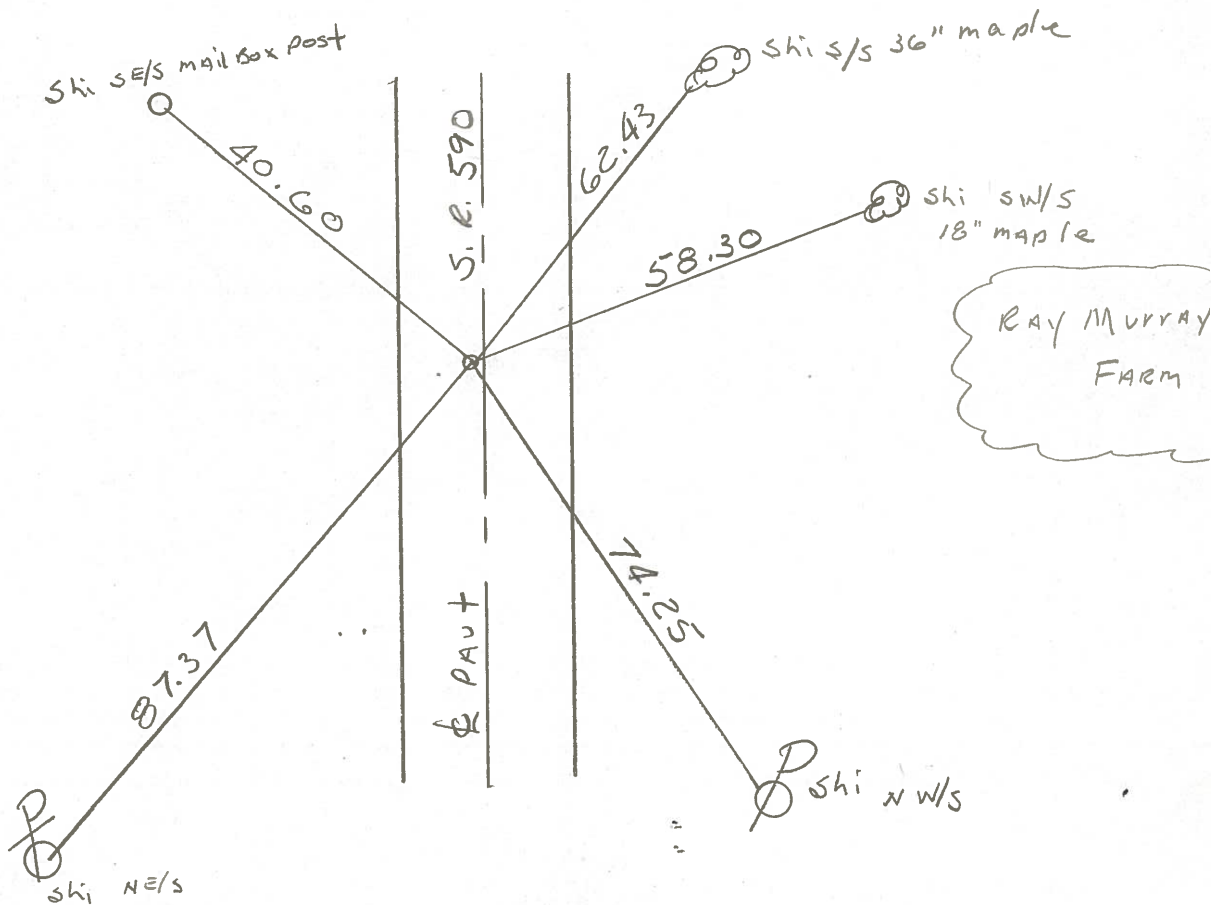
Weather P. SUNNY

Temp. +70°

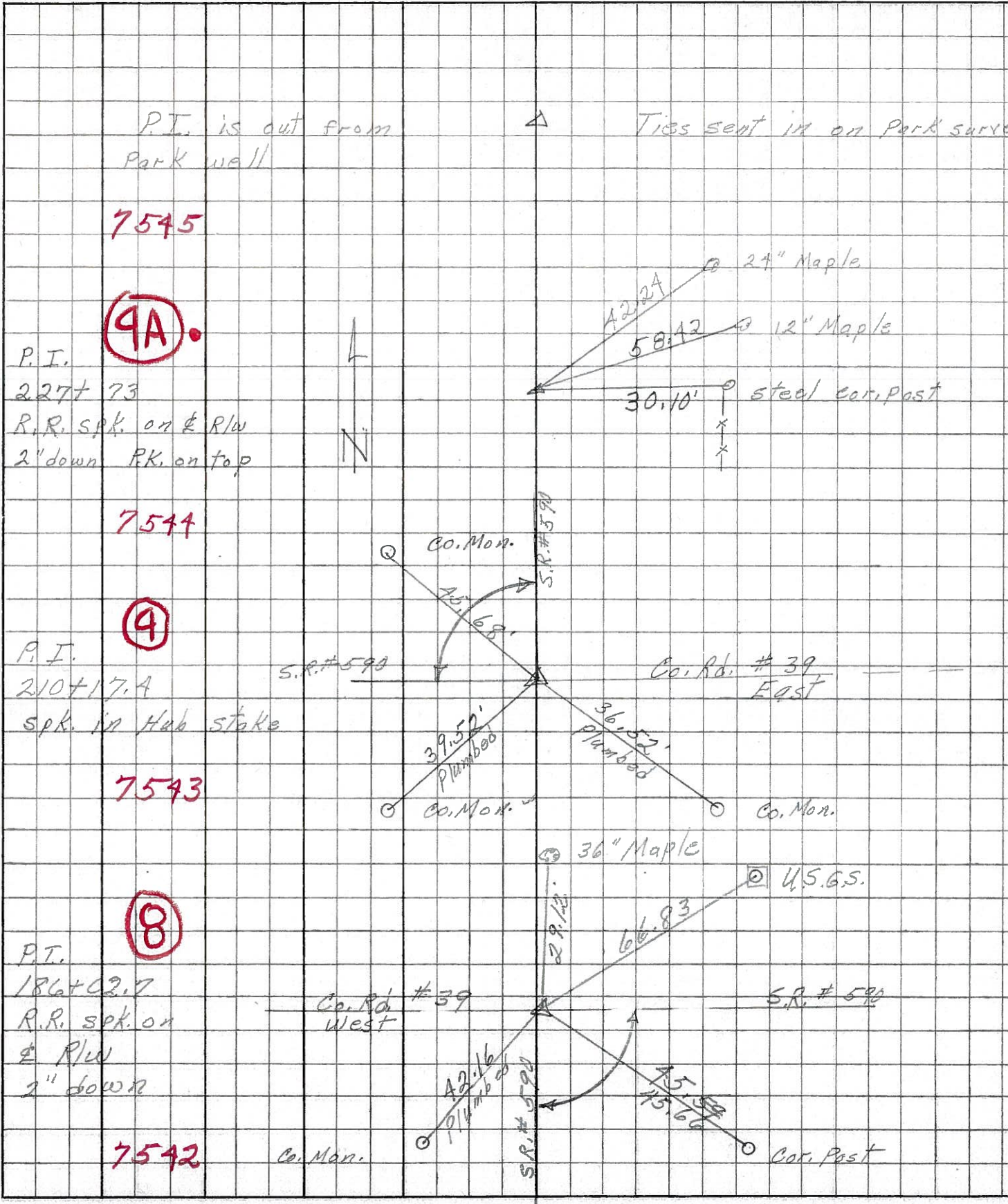


Fcl. P.K/washer @ surface
0.6' Lt. of & PAUT
9.6' TO W. EP,
10.4' TO E. EP.

S.L.M. sta ± 228 + 55



PERSONNEL	TITLE	PERSONNEL	TITLE	COUNTY	DATE
Schneider		Potts		Sandusky	4-3-68
Mosser				S. R.	590
Barbour				SEC.	Seneca Co. Line North
Redding				TEMP.	50°
DESCRIPTION				Ties for Control Points	
LEFT		CENTER LINE		RIGHT	



PERSONNEL	TITLE	PERSONNEL	TITLE	COUNTY	DATE
Schneider				Sandusky	3-23-67
Mosser				S. R. # 590	WEATHER Fair
Barbour				SEC. Park # 10	TEMP. 40'
Potts					
DESCRIPTION				JOB NO.	
Ties for Control Points					

