

O.D.O.T. DISTRICT 2 SURVEY OFFICE (USE ONLY)

PERSONNEL

REFERENCE NO. 10

SHEET 16 OF 33

NOTES TRENKA
 H.C. RHOADES
 R.C. TRENKA

DATE 6-11-18
 WEATHER CLOUDY
 TEMP. 72°

ROUTE SR 590
 COUNTY SANDUSKY
 TOWNSHIP JACKSON
 SECTION 15
 T 4 N R 14 E

DWG BY AUBLE PID 95765

TYPE MONUMENT MAG/WASHER

ON SURFACE - ~~BELOW~~ ON

OFFSET Q PAVEMENT 1.5' LT : ~~RT~~
9.8' TO LT EDGE PAVEMENT

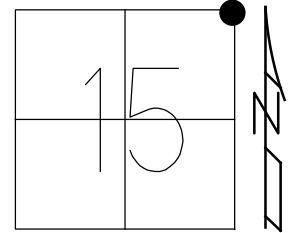
STATION: 235+65

HORZ.DATUM: NAD83(2011)

GEOID: 2012A

GRID: NORTHING: 599946.779

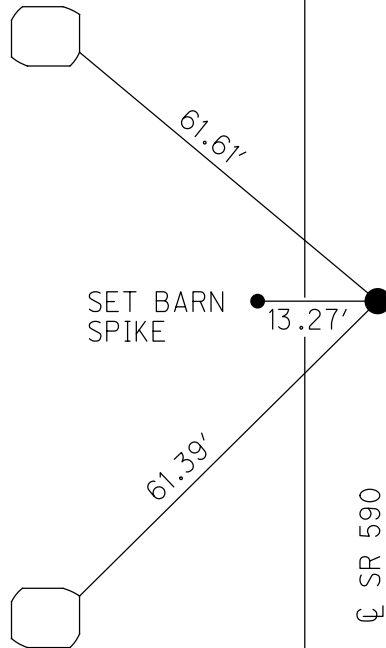
EASTING: 1769034.914



RECORD:
 FD SM.R.R.SPIKE
 5/5/82
 SET P.K./WASHER
 6/29/93, RCC
 FD P.K.SHANK
 7/19/10, MC
 SET MAG/WASHER
 10/20/10, MRC
 FD MAG/WASHER
 1" DOWN
 REF10
 8-23-19, JFO

"X" ON LONG
 GRAY STONE
 ON S/E CORNER
 2' UP

"X" WITH
 MARKER ON TOP
 WHITE STONE
 1' UP

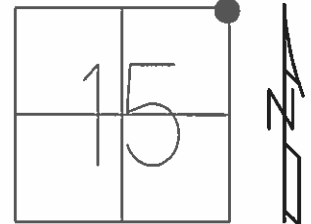


DIST. 10-10A= 104.85'

O.D.O.T. DISTRICT 2 SURVEY OFFICE (USE ONLY)

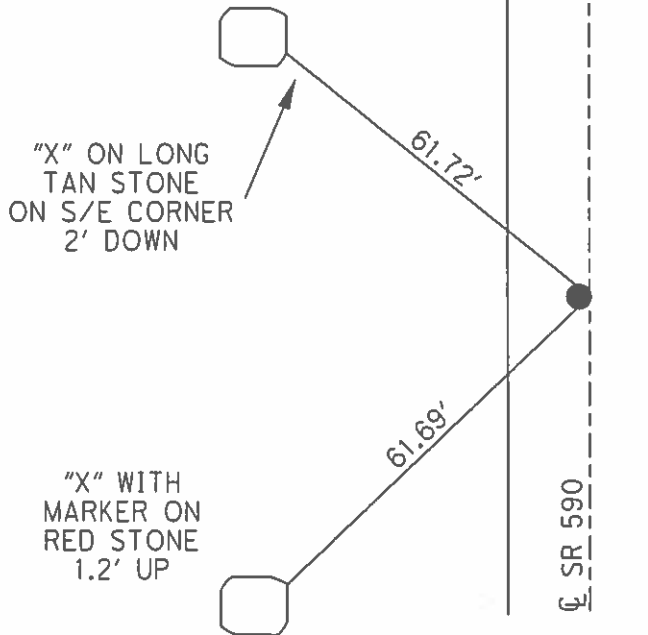
PERSONNEL _____ REFERENCE NO. 10 SHEET 16 OF 33
 NOTES HUSS DATE 07/19/10 ROUTE SR 590
 H.C. FINTEL WEATHER FAIR COUNTY SANDUSKY
 R.C. CANTERBURY TEMP. +84° TOWNSHIP JACKSON
 _____ SECTION 15
 _____ T 4 N R 14 E

TYPE MONUMENT _____ SHANK _____
 ON SURFACE - ~~BELOW~~ _____ ON _____
~~LEFT - C PAV'T~~ - RIGHT _____ 1.5'
9.8' TO LT EDGE PAVEMENT
 S.L.M. _____ 235+65



GRID: NORTHING: 599946.764 EASTING: 600051.474

RECORD:
 FD SM RR SPK 05/05/82
 SET PK/WASHER
 06/29/93 RCC
 SET MAG/WASHER
 10/20/10 MRC



O.D.O.T. DISTRICT 2 SURVEY OFFICE

PERSONNEL

REFERENCE NO. 10

SHEET 14 OF 18

NOTES CHENEY

H.C. RIPPLE

R.C. BARBOUR

GEYMAN

DATE 5-24-1993

WEATHER CLOUDY

TEMP. 65°

ROUTE #590

COUNTY SANDUSKY

TOWNSHIP JACKSON

SECTION 15

T 4 N R 14 E

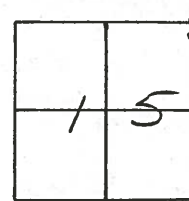
TYPE MONUMENT PK/WASHER

ON SURFACE - ~~BELOW~~ ON

LEFT- & PAV'T. - RIGHT "A" = 0 N. & "B" = 1.5' LT. &

A" = 10.5' TO LT. EDGE PAVEMENT

S.L.M. A" = 236+69 "B" = 235+65



RECORD: 5-5-1982

Pt. "A" = SEC. COR.

FD. SMALL "D" BOLT/WASHER

@ SURFACE

S.L.M. STA. ± 237+42

Pt. "B" = P.I.

FD. SMALL E.R. SPR.

@ SURFACE

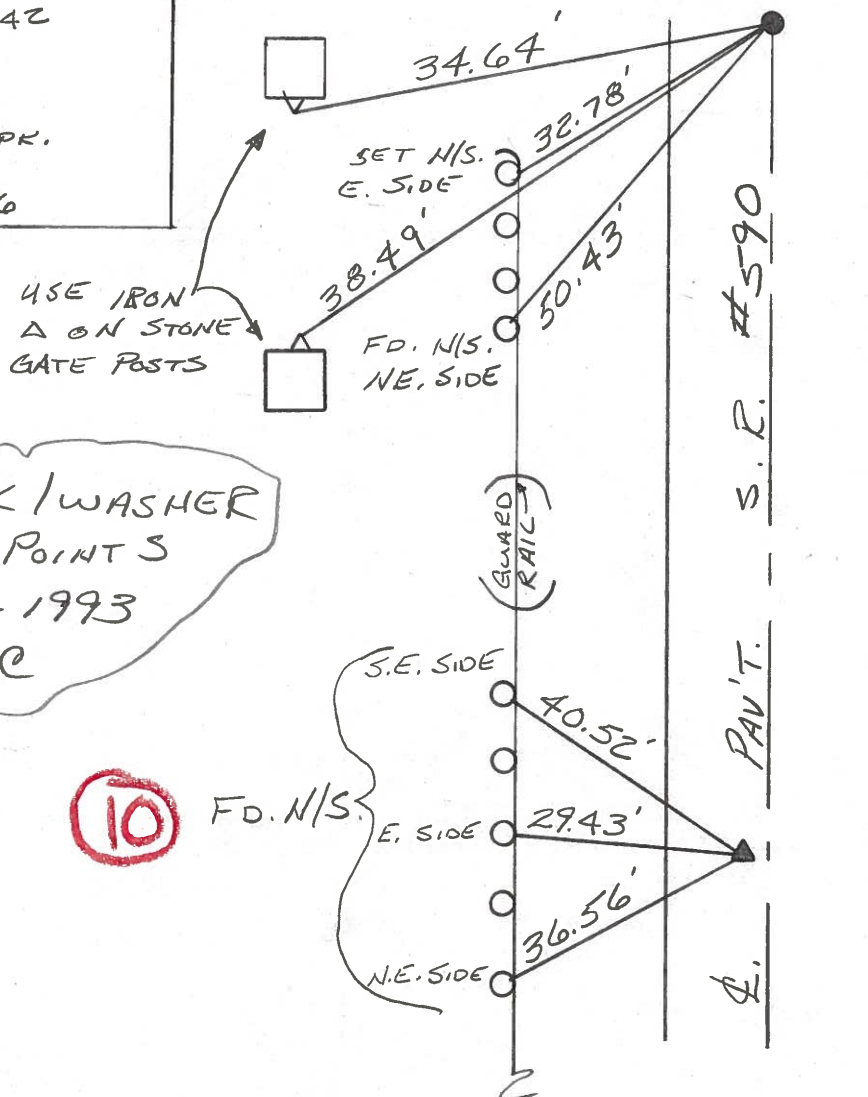
S.L.M. STA. ± 236+36

USE IRON
Δ ON STONE
GATE POSTS

SET PK/WASHER
@ BOTH POINTS
6-29-1993
RCC

10

FD. N/S



OD.OT. DISTRICT 2 SURVEY OFFICE

SHEET _____ OF _____

County SANDUSKY S.R. 590

Date 5-5-82

Township Jackson

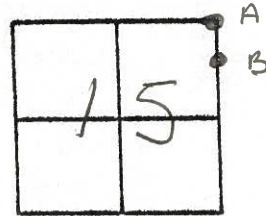
Weather clear

Section 15

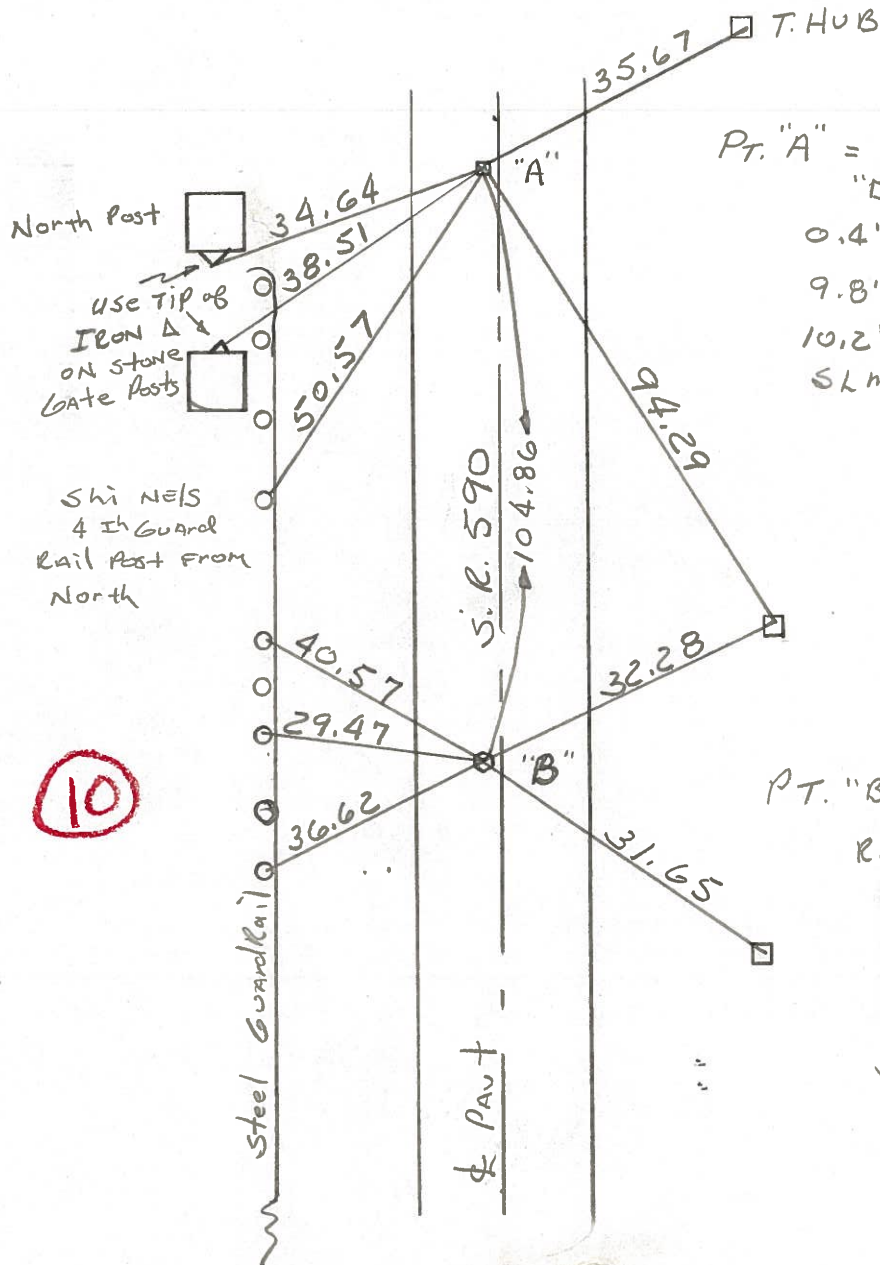
Temp. +75°

T4N, R14E

Personnel Hoffman



#10



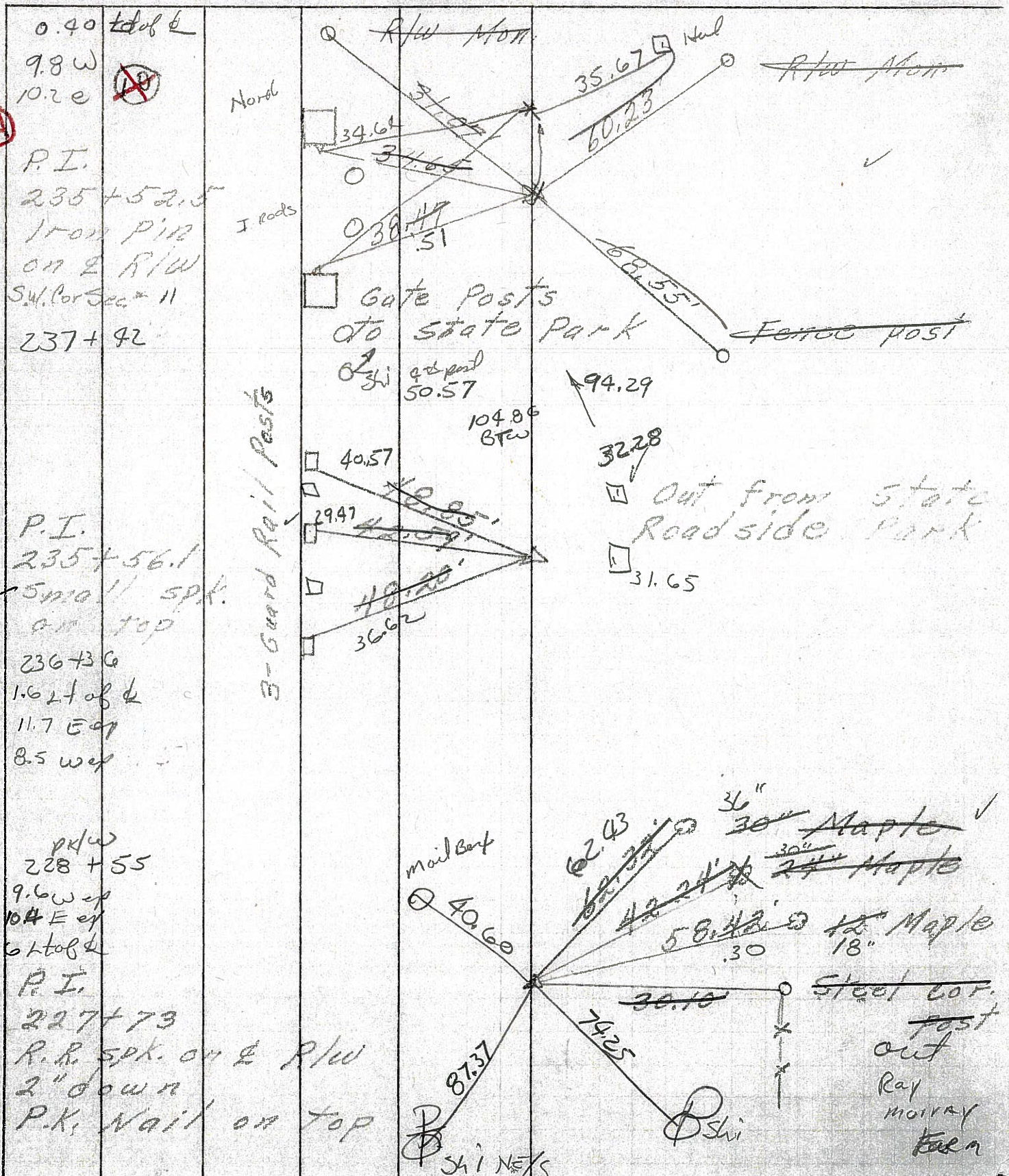
Pt. "A" = Sec. Cor.; Fd small
 "□" Bolt/Washer @ surf
 0.4' Lt. of & PAUT
 9.8' TO W. EP
 10.2' TO E. EP.
 S.L.M. Sta ± 237 + 42

Pt. "B" = P.I.; Fd small
 R.R. spike @ surface
 1.6' Lt of & PAUT
 8.5' TO W. EP
 11.7' TO E. EP
 S.L.M. Sta ± 236 + 3

OLD
Rest
AREA

10

PERSONNEL	TITLE	PERSONNEL	TITLE	COUNTY	DATE	S. R.	WEATHER	SEC.	TEMP.	DESCRIPTION	JOB NO.
				Sandusky	7-30-1	590	Rain	15 & 14	72°	Seneca Co. Line North	

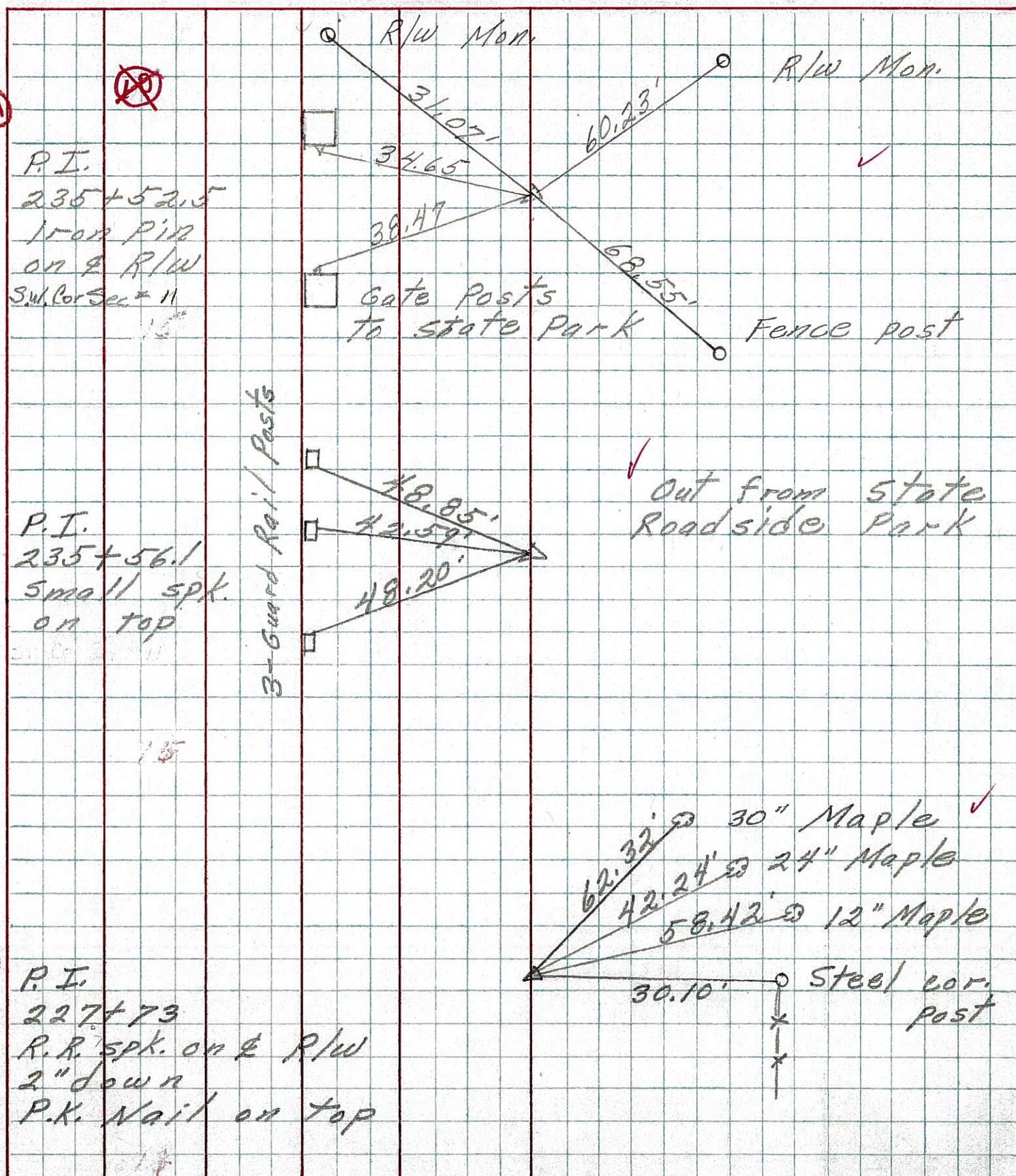


10-A

10

9-A

PERSONNEL	TITLE	PERSONNEL	TITLE	COUNTY	DATE
				<u>Sandusky</u>	<u>7-30-71</u>
				S. R. <u>590</u>	WEATHER <u>Rain</u>
				SEC. <u>15 & 14</u>	TEMP. <u>72°</u>
DESCRIPTION <u>Seneca Co. Line North</u>				JOB NO.	



PERSONNEL	TITLE	PERSONNEL	TITLE	COUNTY	DATE	WEATHER	TEMP.
Schneider				Sandusky	3-23-67	Fair	40°
Mosser				S. R. 590			
Barbour				SEC. Park #10			
Potts							

DESCRIPTION B LEFT CENTER LINE RIGHT JOB NO.

