

O.D.O.T. DISTRICT 2 SURVEY OFFICE (USE ONLY)

PERSONNEL

REFERENCE NO. 10 A

SHEET 17 OF 33

NOTES TRENKA

DATE 6-11-18

ROUTE SR 590

H.C. RHOADES

WEATHER CLOUDY

COUNTY SANDUSKY

R.C. TRENKA

TEMP. 72°

TOWNSHIP JACKSON

SECTION 15

DWG BY AUBLE PID 95765

T 4 N R 14 E

TYPE MONUMENT MAG/WASHER

ON SURFACE - ~~BELOW~~ ON

OFFSET \varnothing PAVEMENT 0.6' LT : ~~RT~~

9.8' TO LT EDGE PAVEMENT

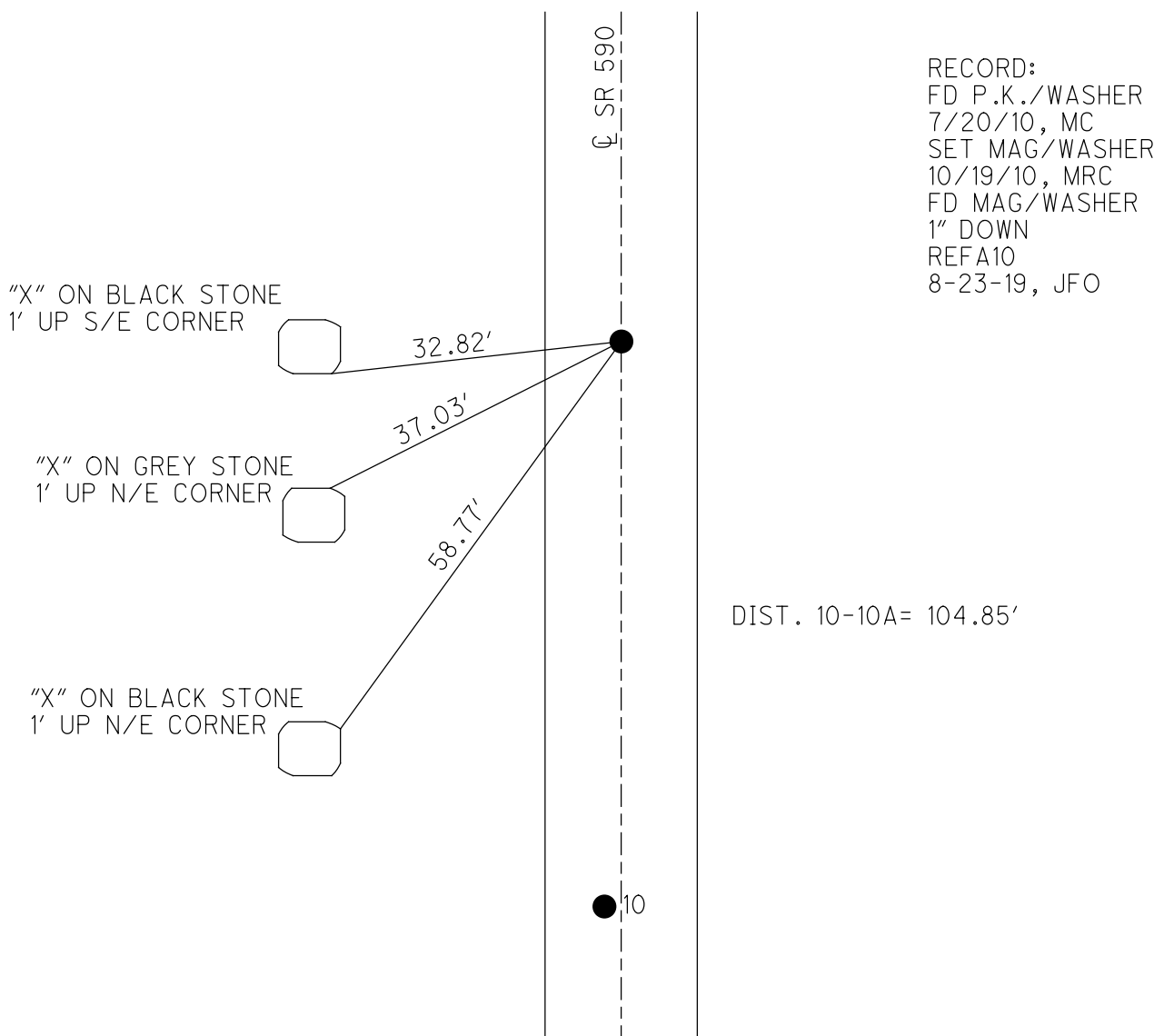
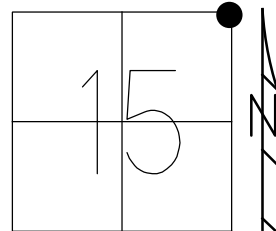
STATION: 235+65

HORZ.DATUM: NAD83(2011)

GEOID: 2012A

GRID: NORTHING: 600051.482

EASTING: 1769040.517



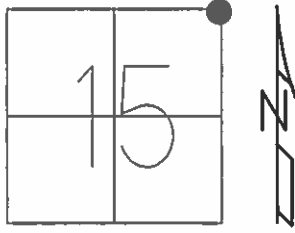
RECORD:
 FD P.K./WASHER
 7/20/10, MC
 SET MAG/WASHER
 10/19/10, MRC
 FD MAG/WASHER
 1" DOWN
 REFA10
 8-23-19, JFO

DIST. 10-10A= 104.85'

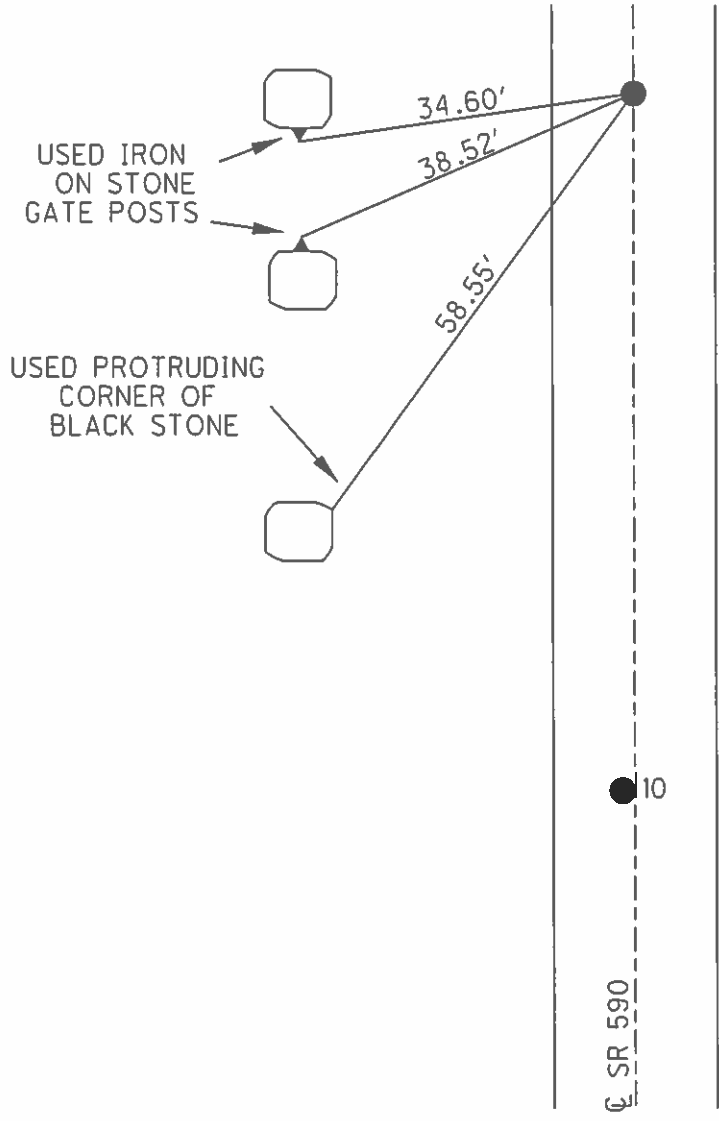
O.D.O.T. DISTRICT 2 SURVEY OFFICE (USE ONLY)

PERSONNEL _____ REFERENCE NO. 10 A SHEET 17 OF 33
 NOTES HUSS DATE 07/19/10 ROUTE SR 590
 H.C. FINTEL WEATHER FAIR COUNTY SANDUSKY
 R.C. CANTERBURY TEMP. +84° TOWNSHIP JACKSON
 _____ SECTION 15
 _____ T 4 N R 14 E

TYPE MONUMENT _____ SHANK _____
 ON SURFACE - ~~BELOW~~ _____ ON _____
~~LEFT~~ - Q PAV'T - ~~RIGHT~~ _____ ON _____
8.2' TO LT EDGE PAVEMENT
 S.L.M. _____ 236+69



GRID: NORTHING: 600051.474 EASTING: 1769040.415



RECORD:
 FD SM BOLT/WASHER
 05/05/82
 SET PK/WASHER
 06/29/93 RCC
 SET MAG/WASHER
 10/20/10 MRC

O.D.O.T. DISTRICT 2 SURVEY OFFICE

PERSONNEL

REFERENCE NO. 10

SHEET 14 OF 18

NOTES CHENEY

H.C. RIPPLE

R.C. BARBOUR

GEYMAN

DATE 5-24-1993

WEATHER CLOUDY

TEMP. 65°

ROUTE #590

COUNTY SANDUSKY

TOWNSHIP JACKSON

SECTION 15

T 4 N R 14 E

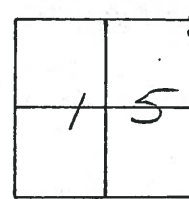
TYPE MONUMENT PK/WASHER

ON SURFACE - ~~BELOW~~ ON

LEFT - PAV'T. - RIGHT

TO LT. EDGE PAVEMENT

S.L.M. A=236+69 B=235+65

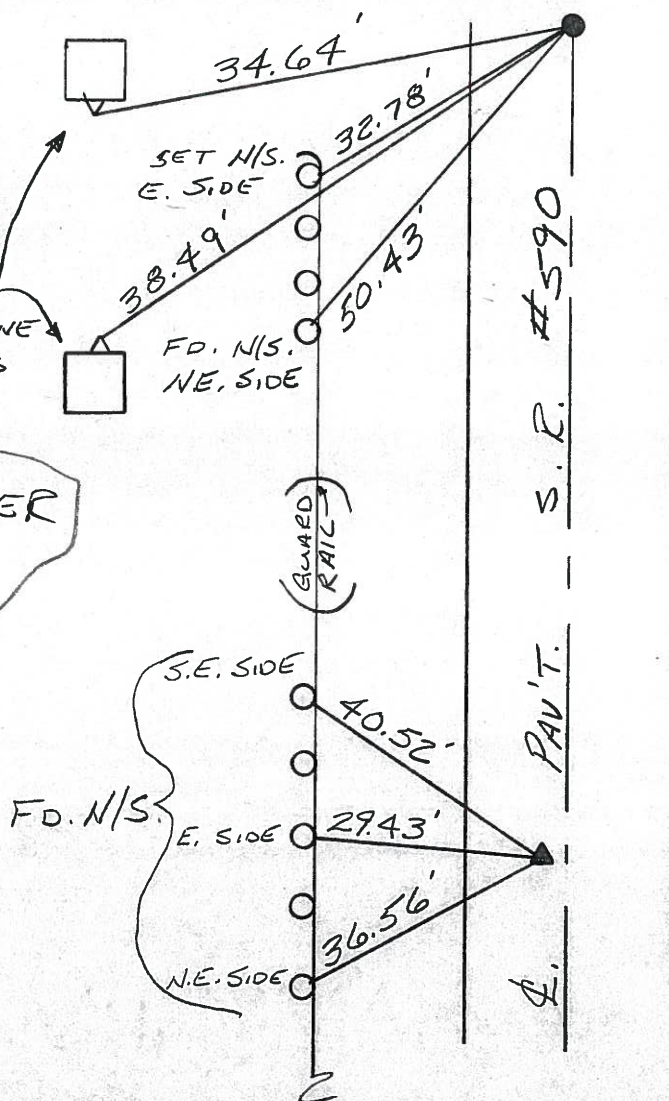


RECORD: 5-5-1982
 PT. "A" = SEC. COR.
 FD. SMALL "A" BOLT/WASHER
 @ SURFACE
 S.L.M. STA. ± 237+42
 PT. "B" = P.I.
 FD. SMALL E.R. SPK.
 @ SURFACE
 S.L.M. STA. ± 236+36

10A

USE IRON
 A ON STONE
 GATE POSTS

SET PK/WASHER
 @ BOTH POINTS
6-29-1993
 RCC



ODOT DISTRICT 2 SURVEY OFFICE

SHEET _____ OF _____

County SANDUSKY S.R. 590

Date 5-5-82

Township Jackson

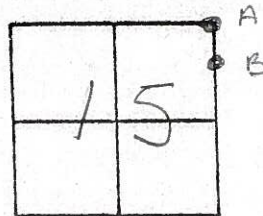
Weather clear

Section 15

Temp. +75°

T4N, R14E

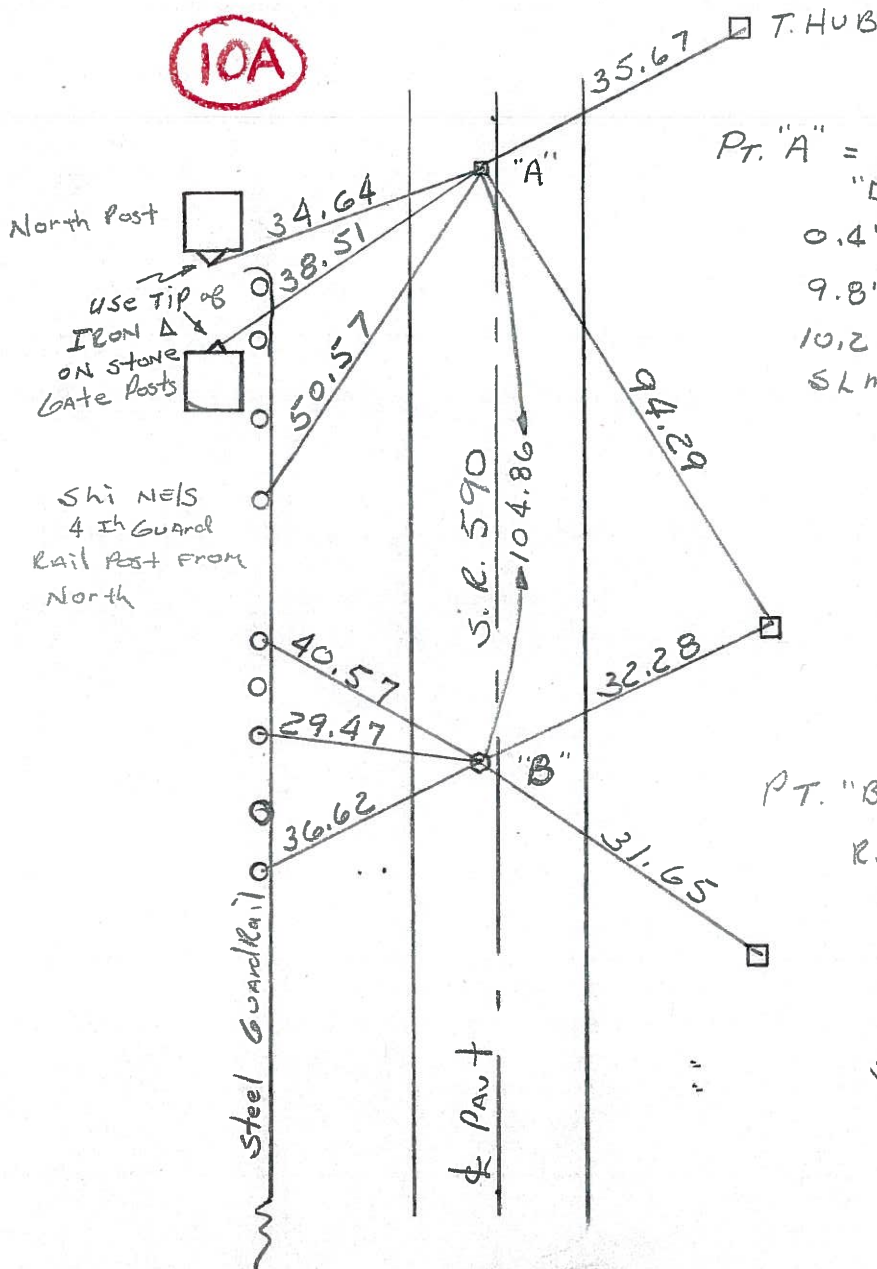
Personnel Hoffman



#10

Crew

10A



Pt. "A" = Sec. Cor.; Fd small
 "□" Bolt/Washer @ surface
 0.4' Lt. of & PAUT
 9.8' TO W. EP
 10.2' TO E. EP.
 S.L.M. STA ± 237 + 42

Pt. "B" = P.I.; Fd small
 R.R. SPK @ surface
 1.6' Lt of & PAUT
 8.5' TO W. EP
 11.7' TO E. EP
 S.L.M. STA ± 236 + 3

OLD
Rest
AREA

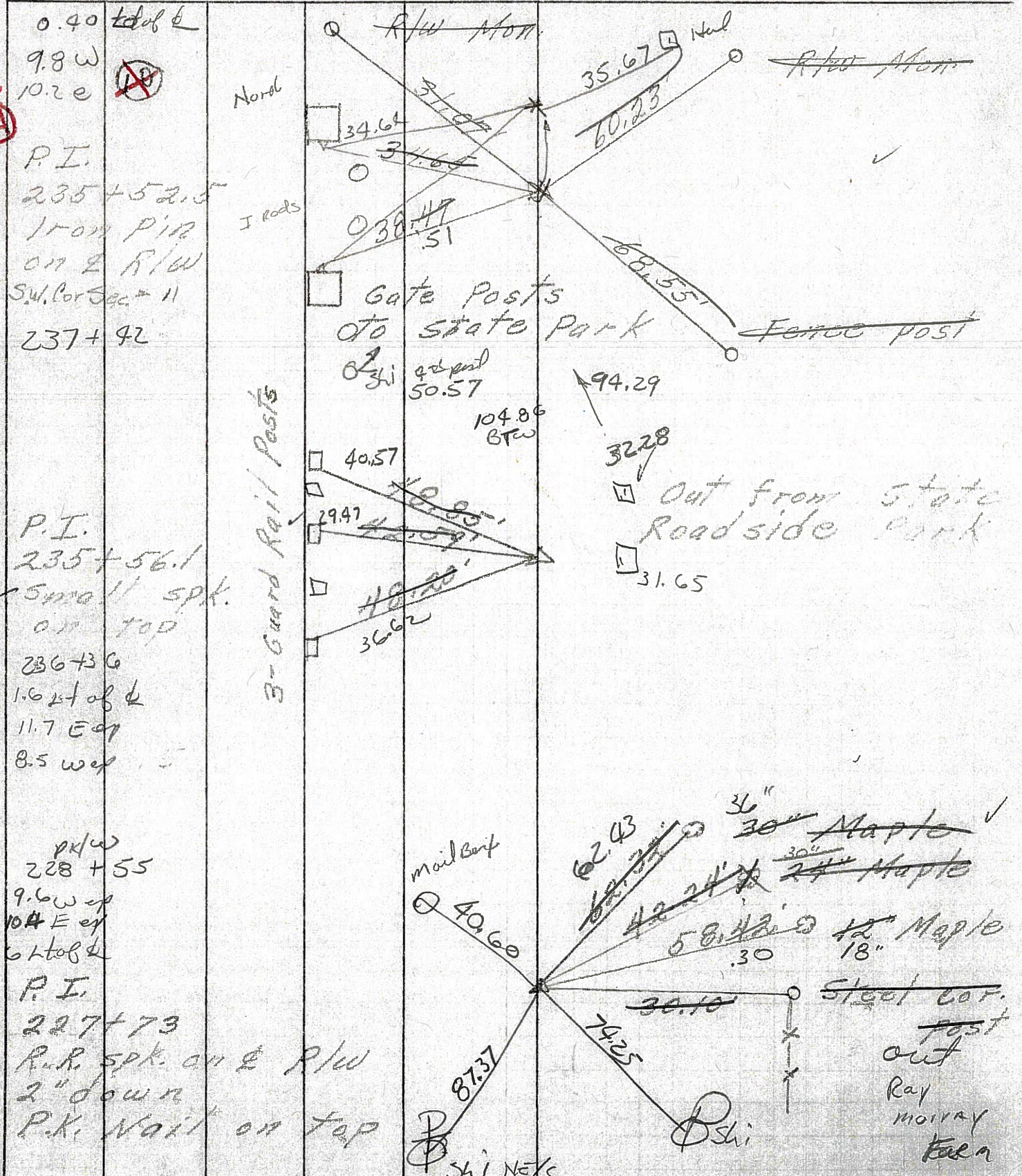
SHI NELS
4 IN Guard
Rail Post From
North

PERSONNEL	TITLE	PERSONNEL	TITLE	COUNTY	DATE	WEATHER	TEMP.
				Sandusky	7-30-71	Rain	72°
				S. R. 590			
				SEC. 15 & 14			
DESCRIPTION Seneca Co. Line North				JOB NO.			
LEFT		CENTER LINE		RIGHT			

10-A

10

9-A



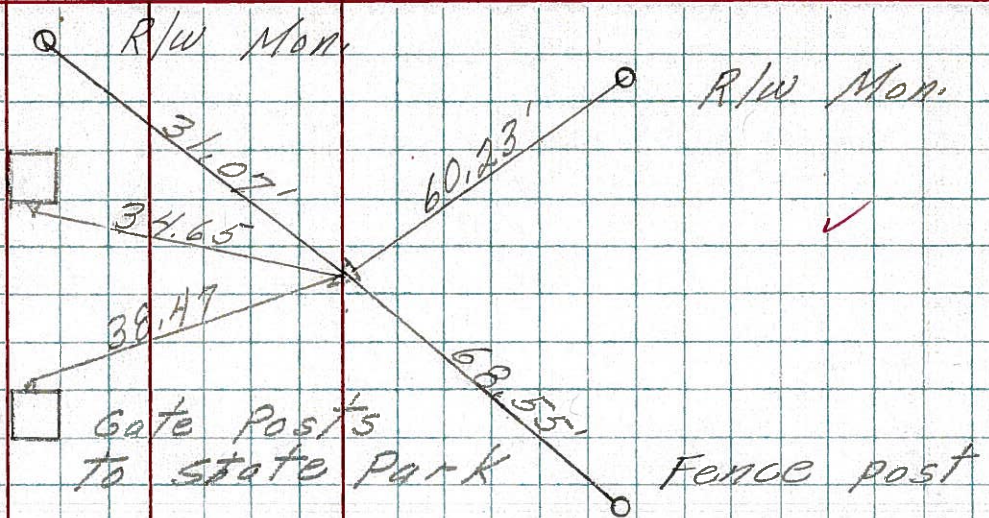
PERSONNEL _____ TITLE _____ PERSONNEL _____ TITLE _____
 COUNTY Sandusky DATE 7-30-71
 S. R. 590 WEATHER Rain
 SEC. 15 & 14 TEMP. 72°
 DESCRIPTION Seneca Co. Line North JOB NO. _____

LEFT CENTER LINE RIGHT

10-A

~~10~~

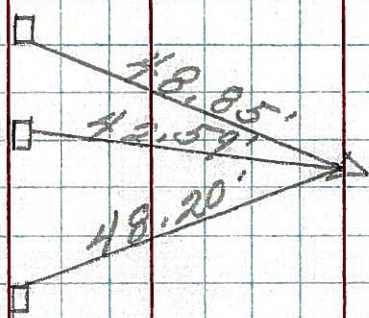
P.I.
 235+52.5
 Iron pin
 on E R/W
 S.W. Cor Sec 11



10

P.I.
 235+56.1
 Small spk.
 on top

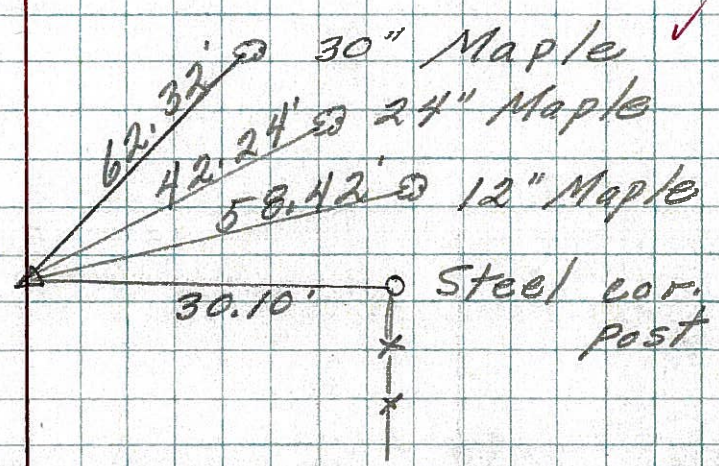
3 - Guard Rail Posts



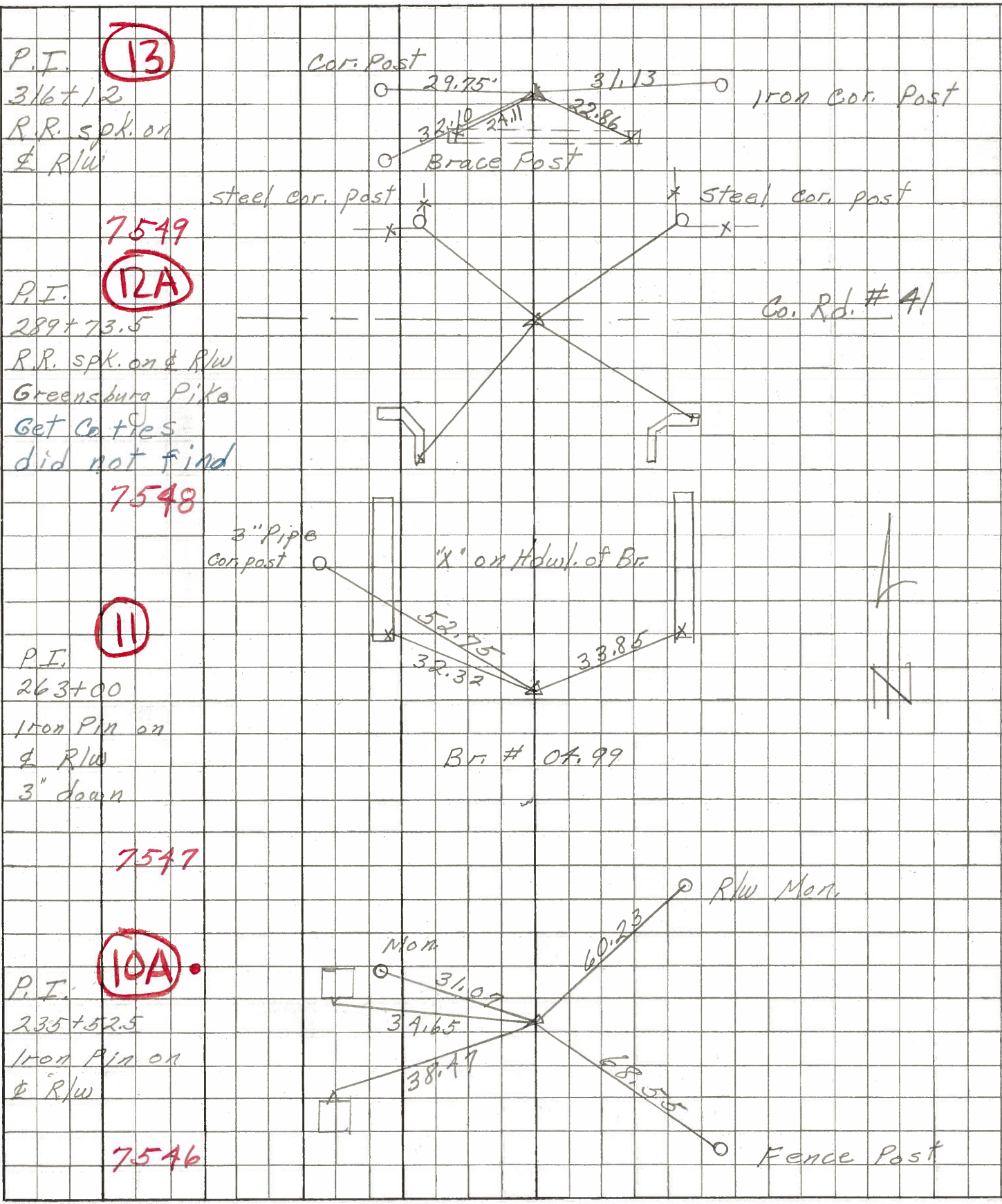
Out from state Roadside Park

9-A

P.I.
 227+73
 R.R. spk. on E R/W
 2" down
 P.K. Nail on top



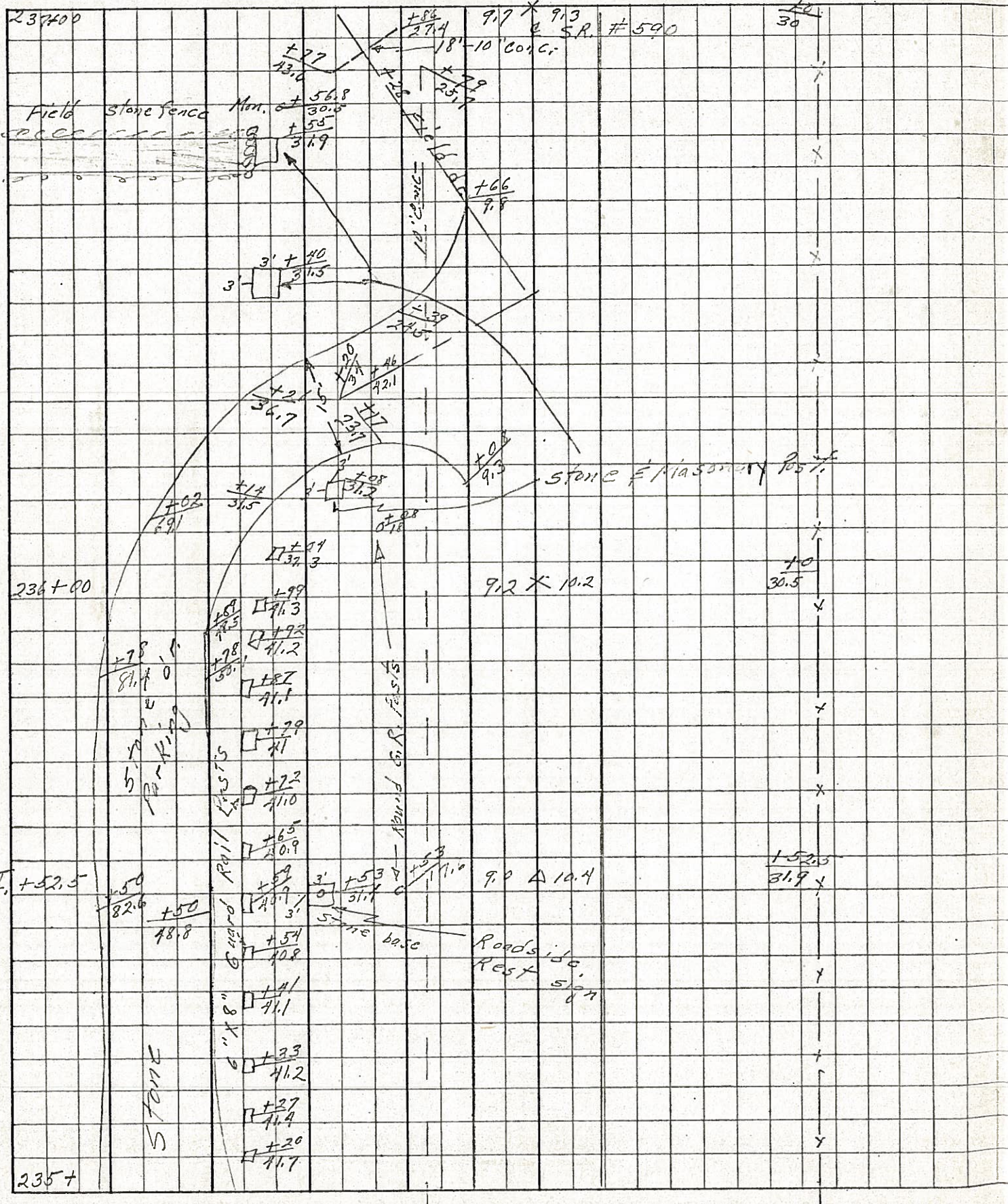
PERSONNEL TITLE PERSONNEL TITLE COUNTY Sandusky DATE 4-3-68
 Schneider Potts
 Mosser
 Barbour S. R. 590 WEATHER Cloudy
 Redding SEC. Sen. Co. Line North TEMP. 50°
 DESCRIPTION Ties for Control JOB NO.



PERSONNEL TITLE PERSONNEL TITLE
Schneider _____
Mosser _____
Barbour _____
Potts _____

COUNTY Sandusky DATE 3-24-67
 S. R. 590 WEATHER Fair
 SEC. Park #10 TEMP. 40°

DESCRIPTION TOPO S.R. #590 JOB NO. _____



PERSONNEL TITLE PERSONNEL TITLE

COUNTY Sandusky DATE 3-24-67

Schnöder

S. R. 590 WEATHER Fair

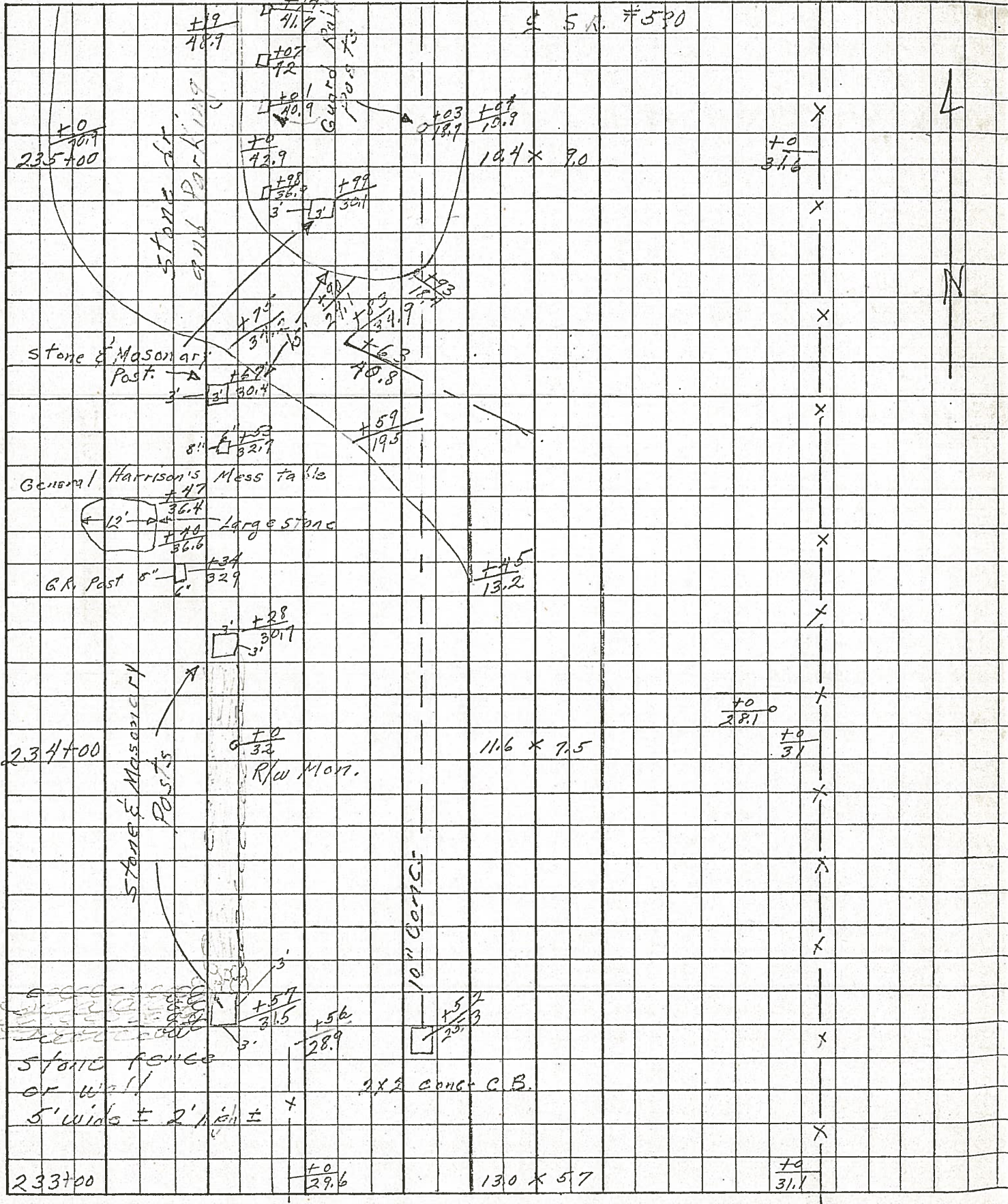
Mosser

SEC. Park # 10 TEMP. 40°

Barbour

Potts

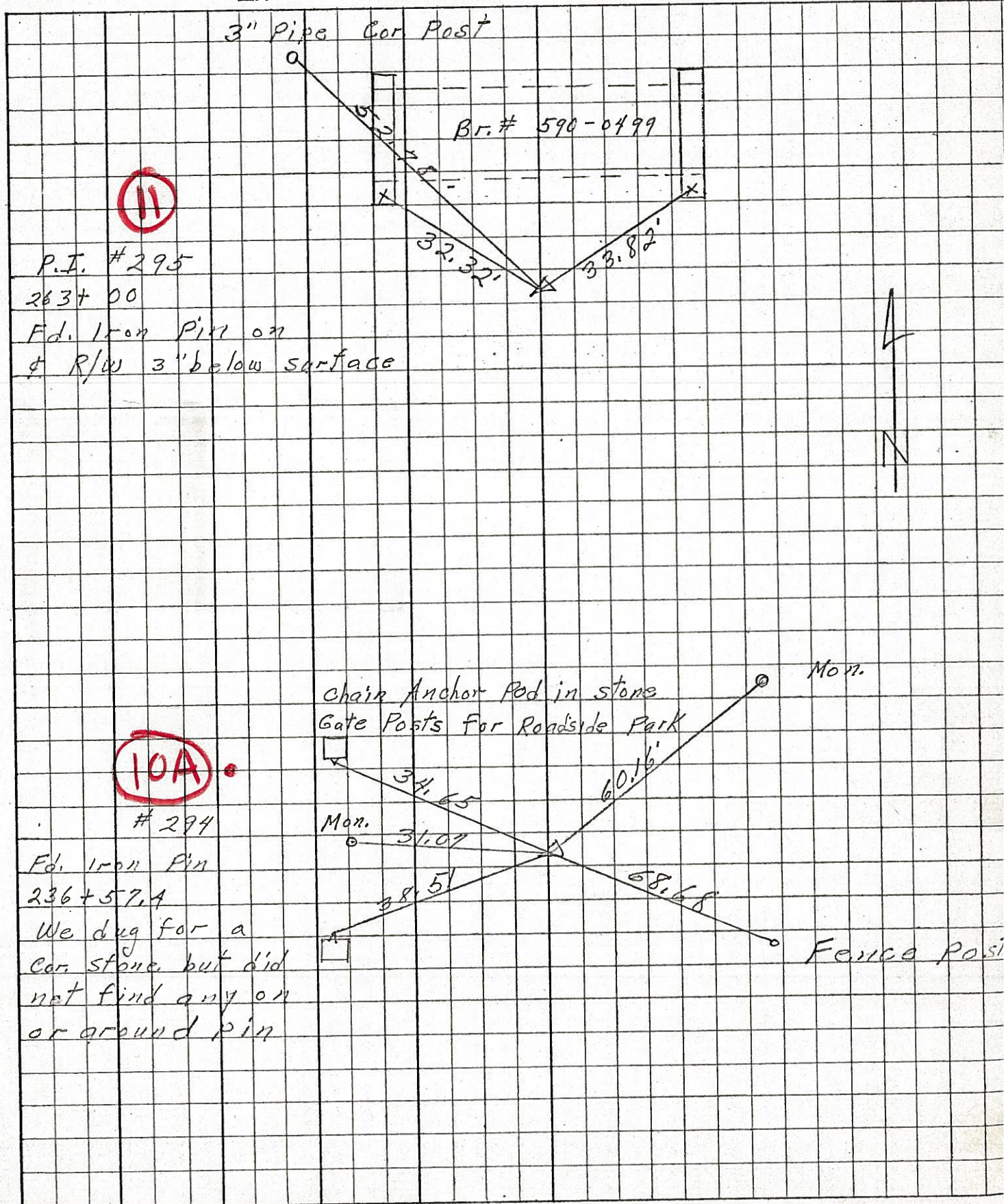
DESCRIPTION TOPO LEFT CENTER LINE RIGHT JOB NO.



PERSONNEL	TITLE	PERSONNEL	TITLE
Schneider			
Mosser			
Barbour			
Potts			

COUNTY Sandusky DATE 3-23-61
 S. R. # 590 WEATHER Fair
 SEC. Park #10 TEMP. 40°

DESCRIPTION Ties for Control Points JOB NO. _____



11
 P.I. #295
 263+00
 Fd. Iron Pin on
 & R/W 3" below surface

10A
 #294
 Fd. Iron Pin
 236+57.4
 We dug for a
 car stone but did
 not find any on
 or around pin

