

O.D.O.T. DISTRICT 2 SURVEY OFFICE (USE ONLY)

PERSONNEL

REFERENCE NO. 12

SHEET 19 OF 33

NOTES RHOADES

DATE 6-11-18

ROUTE SR 590

H.C. O'DONNELL

WEATHER CLOUDY

COUNTY SANDUSKY

R.C. SEAMAN

TEMP. 72°

TOWNSHIP JACKSON

SECTION 3

DWG BY MILLER PID 95765

T 4 N R 14 E

TYPE MONUMENT MONBOX, W 3/4" IPIN

ON SURFACE - ~~BELOW~~ ON

OFFSET \varnothing PAVEMENT 6.42' LT : RT

- TO - EDGE PAVEMENT

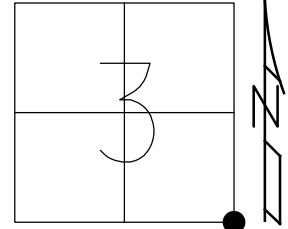
STATION: 289+82

HORZ.DATUM: NAD83(2011)

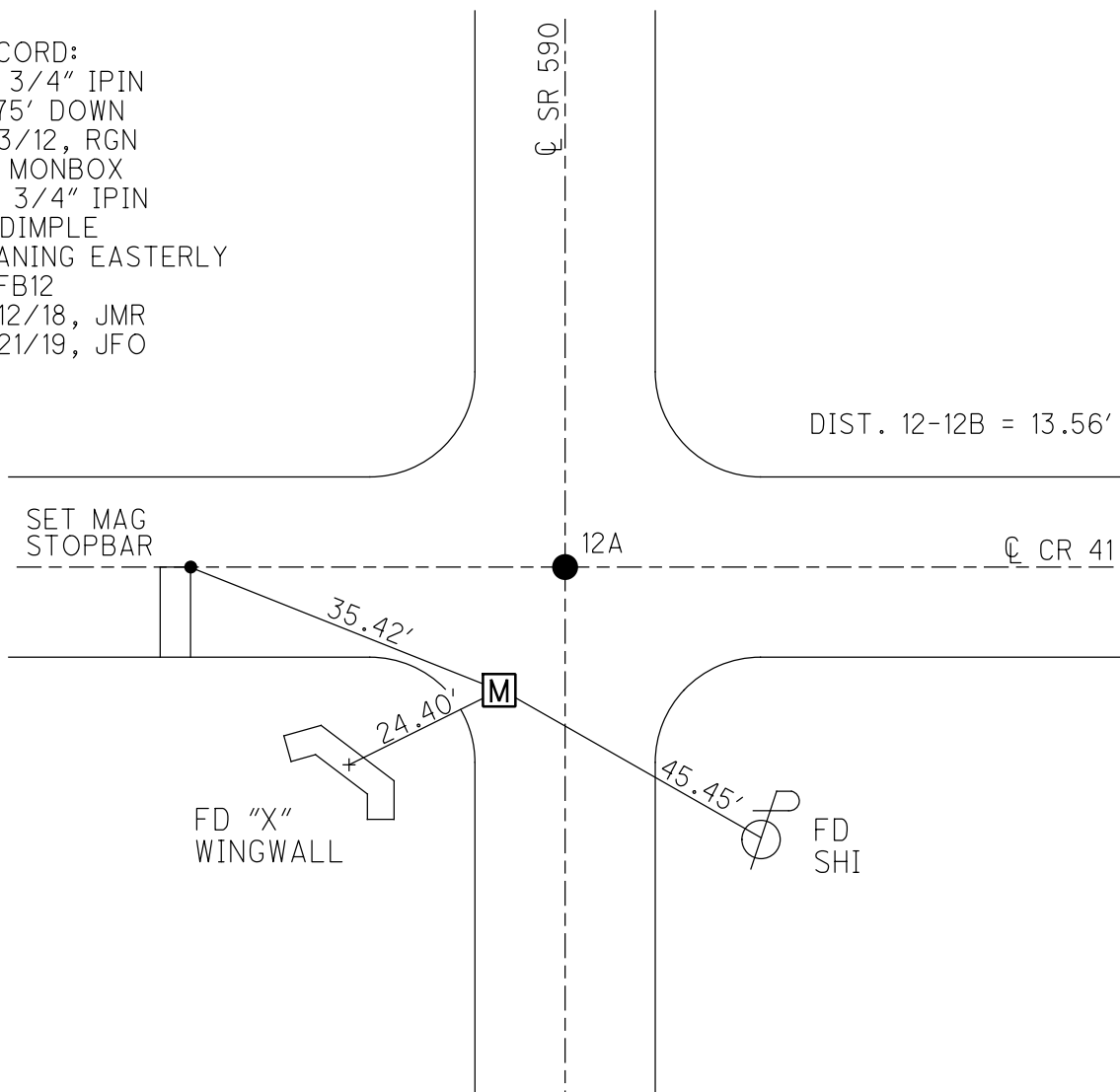
GEOID: 2012A

GRID: NORTHING: 605351.886

EASTING: 1769288.701



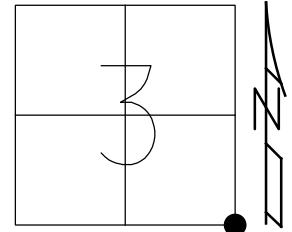
RECORD:
 FD 3/4" IPIN
 0.75' DOWN
 8/3/12, RGN
 FD MONBOX
 W/ 3/4" IPIN
 W/DIMPLE
 LEANING EASTERLY
 REFB12
 6/12/18, JMR
 8/21/19, JFO



O.D.O.T. DISTRICT 2 SURVEY OFFICE (USE ONLY)

PERSONNEL _____ REFERENCE NO. 12 SHEET 19 OF 33
 NOTES RHOADES DATE 2/27/18 ROUTE SR 590
 H.C. O'DONNELL WEATHER SUNNY COUNTY SANDUSKY
 R.C. SEAMAN TEMP. 42° TOWNSHIP JACKSON
 DWG BY MILLER PID 101240 SECTION 3
 T 4 N R 14 E

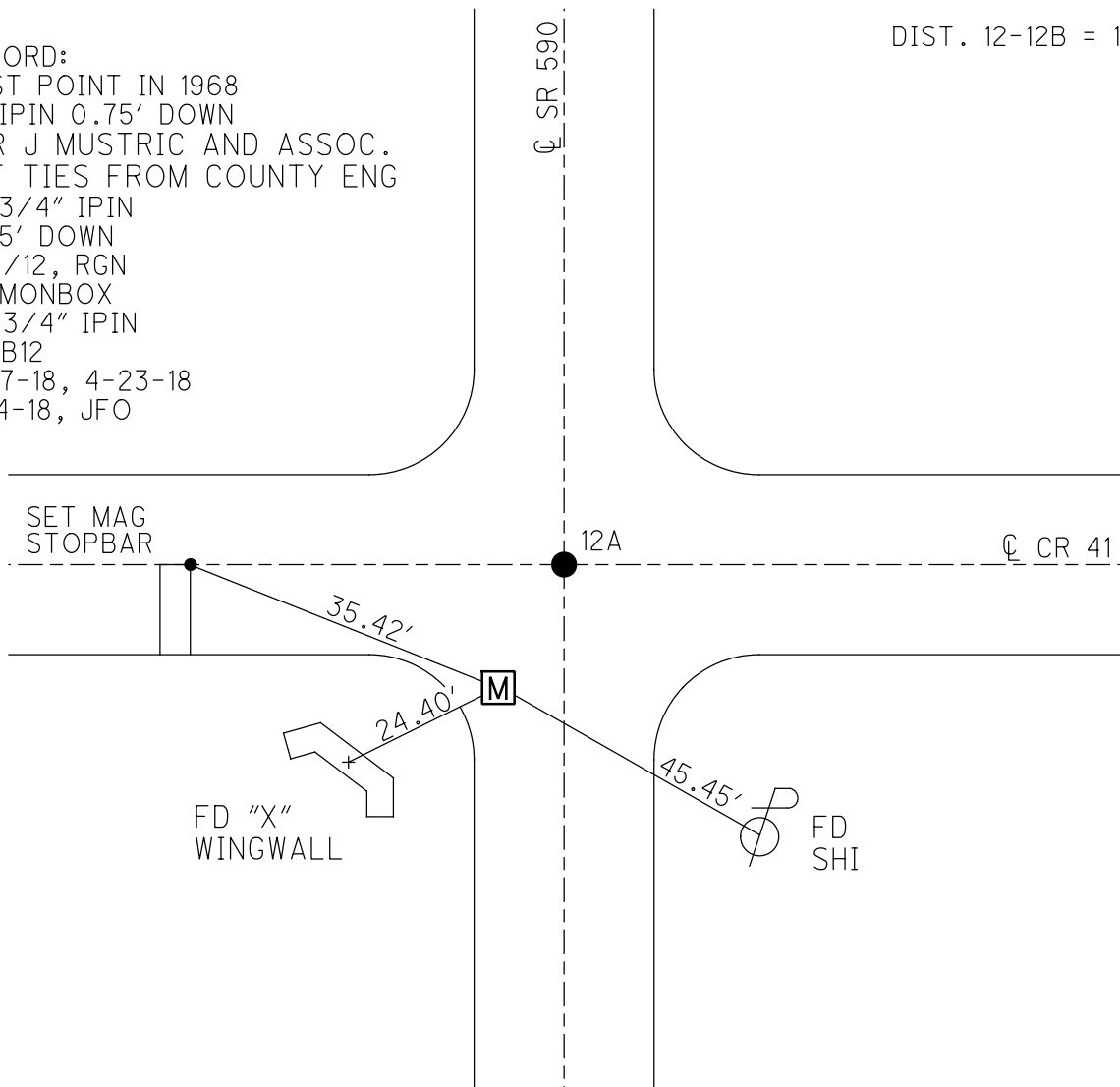
TYPE MONUMENT MONBOX, W/3/4" IPIN
 ON SURFACE - ~~BELOW~~ ON
 OFFSET C PAVEMENT 6.42' LT : ~~RT~~
- TO - EDGE PAVEMENT
 STATION: 289+82



HORIZ.DATUM: NAD83-2011 GEOID: NAVD88-2012A
 GRID: NORTHING: 605351.886 EASTING: 1769288.701

RECORD:
 LOST POINT IN 1968
 FD IPIN 0.75' DOWN
 PER J MISTRIC AND ASSOC.
 REF TIES FROM COUNTY ENG
 FD 3/4" IPIN
 0.75' DOWN
 8/3/12, RGN
 FD MONBOX
 W/ 3/4" IPIN
 REFB12
 2-27-18, 4-23-18
 10-4-18, JFO

DIST. 12-12B = 13.65'



O.D.O.T. DISTRICT 2 SURVEY OFFICE (USE ONLY)

PERSONNEL _____ REFERENCE NO. 12 ~~X~~ SHEET 20 OF 33
 NOTES _____ DATE 8-03-12 ROUTE SR 590
 H.C. NUHFER WEATHER HOT COUNTY SANDUSKY
 R.C. COUCHER TEMP. 92° TOWNSHIP JACKSON
 _____ SECTION 3
 _____ T 4 N R 14 E

TYPE MONUMENT _____ FD IPIN _____

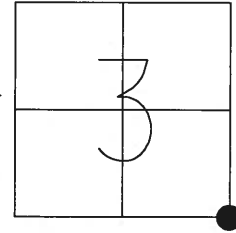
~~ON SURFACE~~ - BELOW _____ 0.75'

~~LEFT - C PAV'T~~ - RIGHT _____ 6.42' W AND 11.0' S C

_____ TO _____ EDGE PAVEMENT

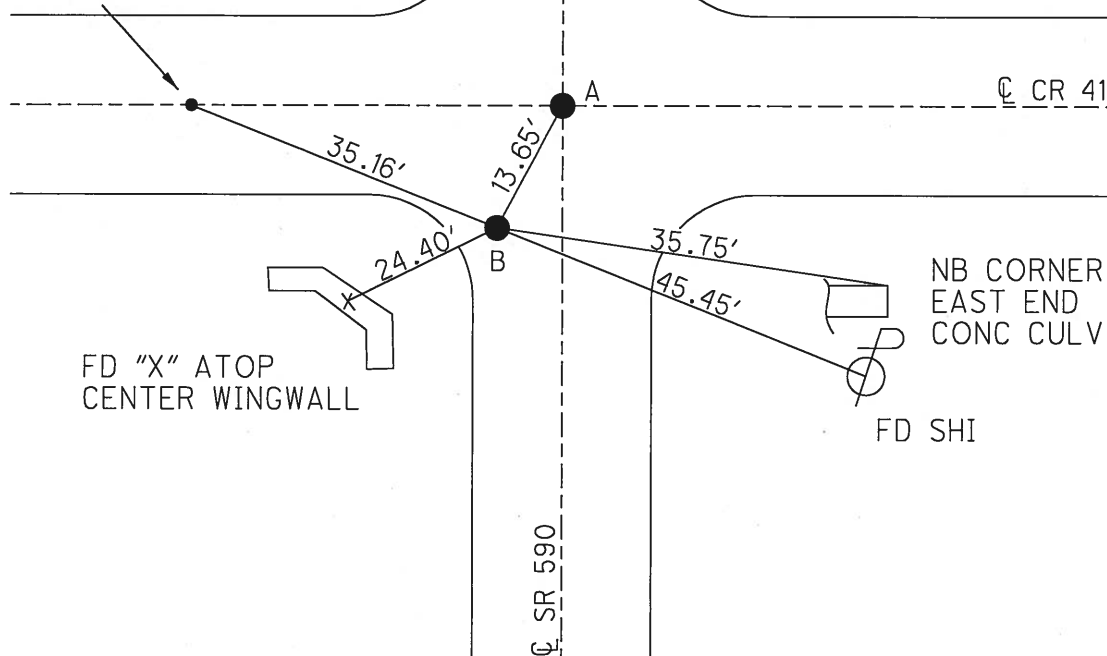
S.L.M. _____ 289+82 _____

GRID: NORTHING: 605351.930 EASTING: 1769288.429



RECORD:
 LOST POINT IN 1968
 FD IPIN 0.75' DOWN
 PER J MUSTRIC AND ASSOCIATES
 REF TIES FROM COUNTY ENG

SET CONC N/S
 ON: OUT FROM
 STOP SIGN



FD "X" ATOP
 CENTER WINGWALL

NB CORNER
 EAST END
 CONC CULV

FD SHI

CL SR 590

CL CR 41