

O.D.O.T. DISTRICT 2 SURVEY OFFICE (USE ONLY)

PERSONNEL

REFERENCE NO. 13 A

SHEET 22 OF 33

NOTES RHOADES DATE 2/27/18
 H.C. O'DONNELL WEATHER SUNNY
 R.C. SEAMAN TEMP. 42°

ROUTE SR 590
 COUNTY SANDUSKY
 TOWNSHIP JACKSON
 SECTION 3
 T 4 N R 14 E

DWG BY MILLER PID 101240

TYPE MONUMENT MAG/WASHER

ON SURFACE - ~~BELOW~~ ON

OFFSET Q PAVEMENT 1.9' ~~LT~~ : RT

8.5' TO LT EDGE PAVEMENT

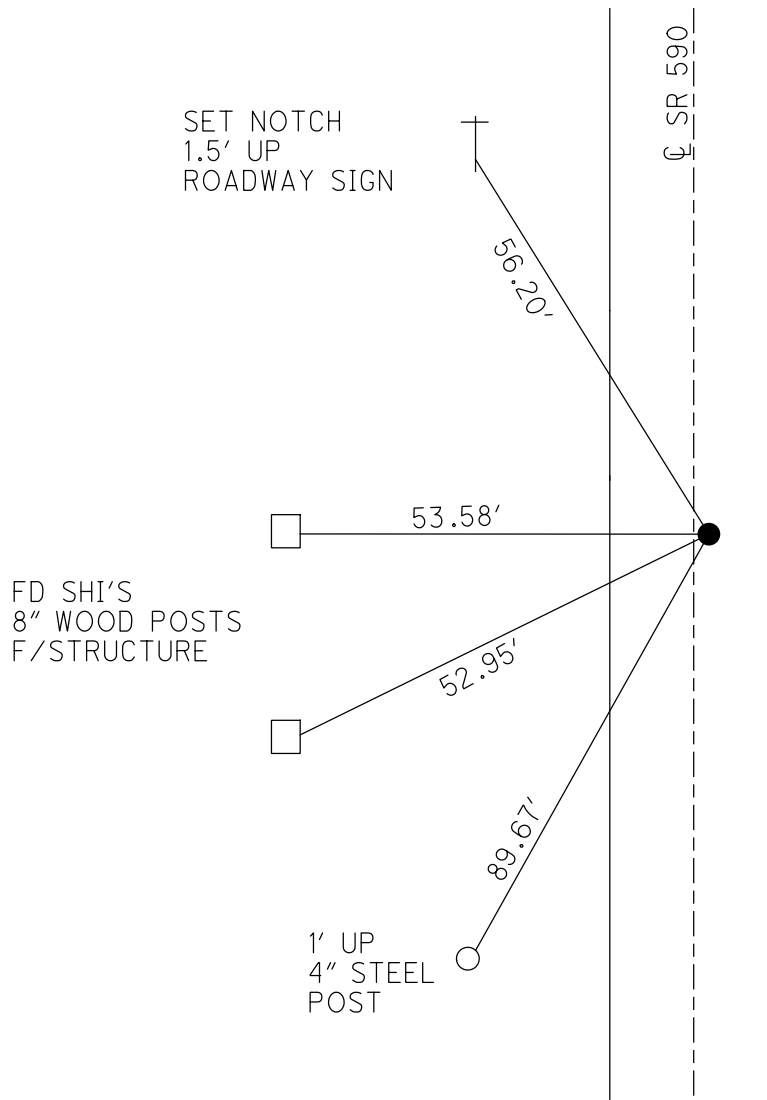
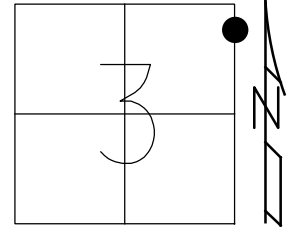
STATION: 345+57

HORZ.DATUM: NAD83-2011

GEOID: NAVD88-2012A

GRID: NORTHING: 610918.756

EASTING: 1769578.287



- RECORD:
 FD NAIL
 2" DOWN
 SOURCE UNKNOWN
 8/11/82
 SET P.K.NAIL
 12/09/82
 SET P.K./WASHER
 6/29/93, RCC
 FD P.K./WASHER
 7/19/10, MC
 SET MAG/WASHER
 10/20/10, MC
 FD MAG/WASHER
 REFA13
 2-27-18, 4-23-18
 FD MAG/WASHER
 1" DOWN
 10-4-18, JFO
 FD MAG/WASHER
 1" DOWN
 8/21/19, JFO

O.D.O.T. DISTRICT 2 SURVEY OFFICE (USE ONLY)

PERSONNEL

REFERENCE NO. 13 A

SHEET 22 OF 33

NOTES RHOADES DATE 2/27/18

ROUTE SR 590

H.C. O'DONNELL WEATHER SUNNY

COUNTY SANDUSKY

R.C. SEAMAN TEMP. 42°

TOWNSHIP JACKSON

SECTION 3

DWG BY MILLER PID 101240

T 4 N R 14 E

TYPE MONUMENT MAG/WASHER

ON SURFACE - ~~BELOW~~ ON

OFFSET CL PAVEMENT 1.9' ~~LT~~ : RT

8.5' TO LT EDGE PAVEMENT

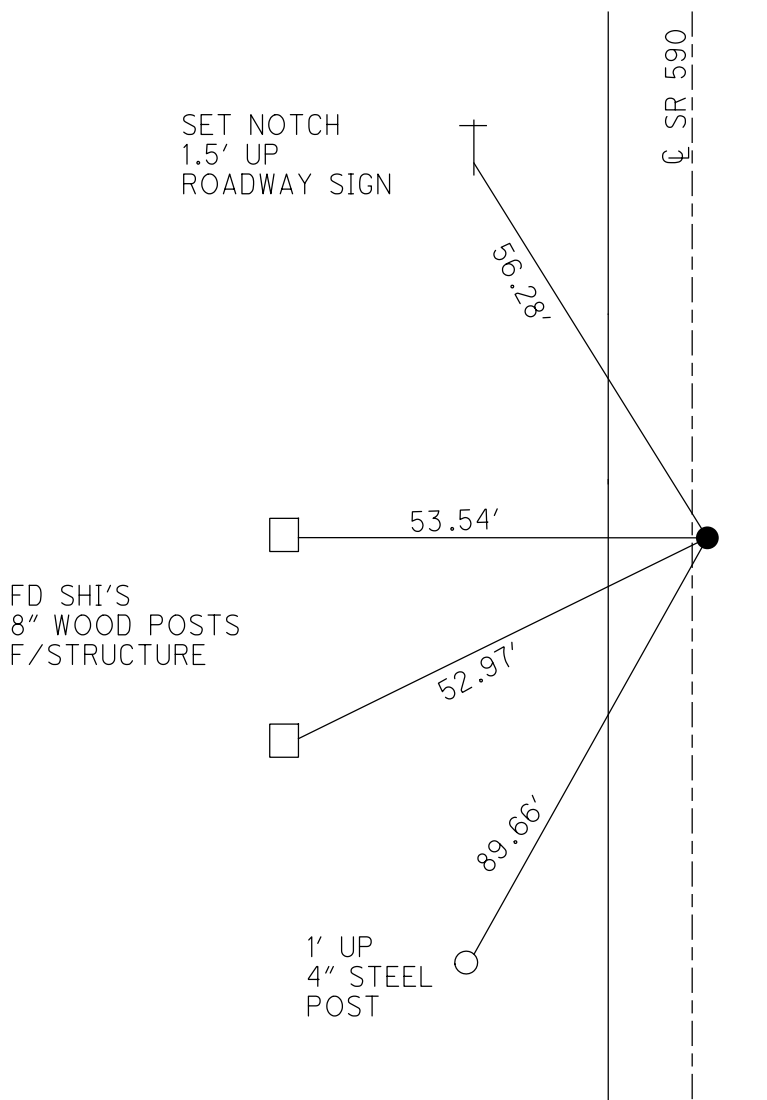
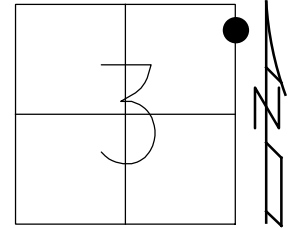
STATION: 345+57

HORIZ.DATUM: NAD83-2011

GEOID: NAVD88-2012A

GRID: NORTHING: 610918.756

EASTING: 1769578.287

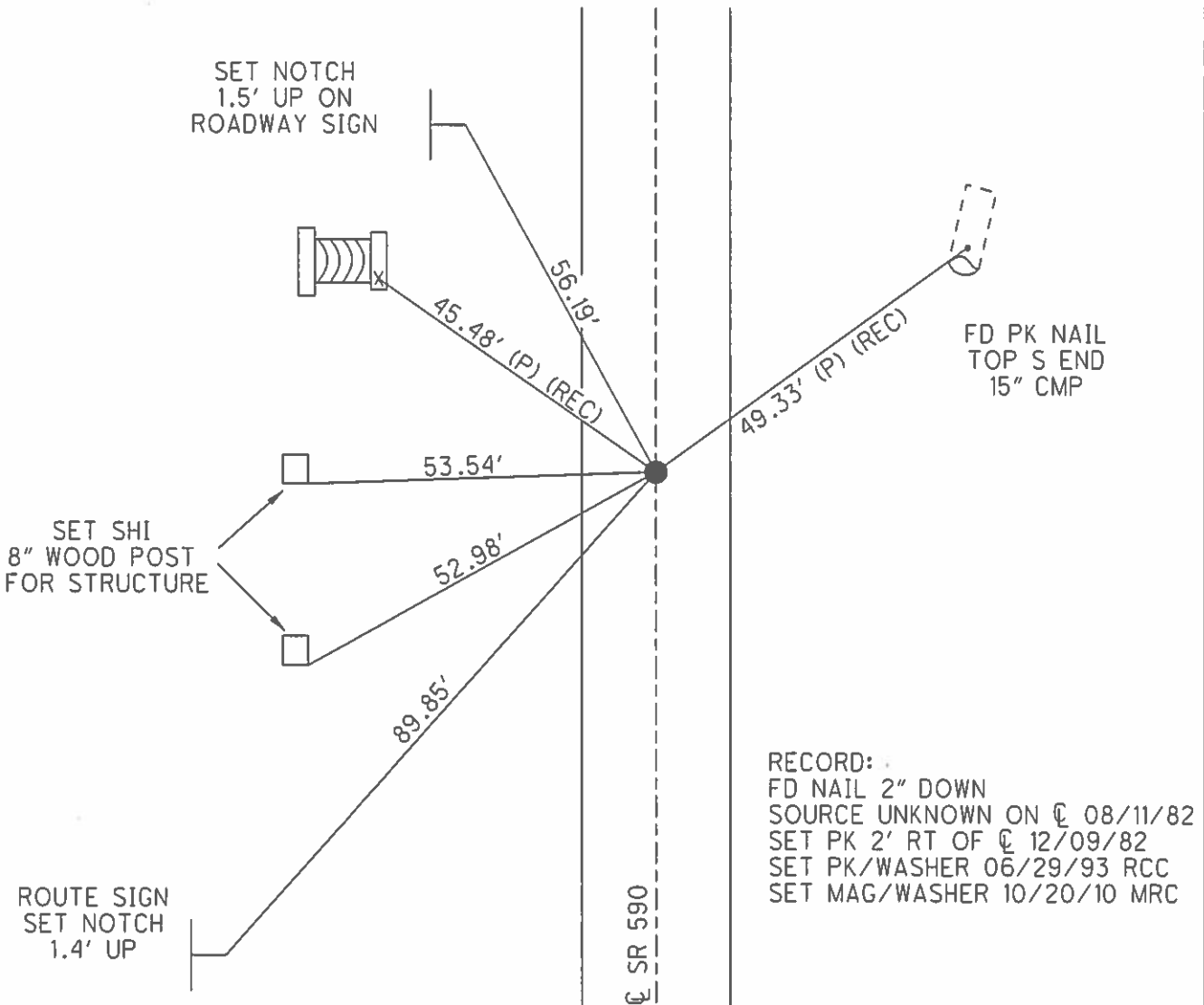
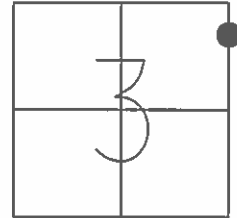


RECORD:
 FD NAIL
 2" DOWN, ON CL
 SOURCE UNKNOWN
 8/11/82
 SET P.K.NAIL
 2' RT OF CL
 12/09/82
 SET P.K./WASHER
 6/29/93, RCC
 FD P.K./WASHER
 7/19/10, MC
 SET MAG/WASHER
 10/20/10, MC
 FD MAG/WASHER
 REFA13
 2-27-18, 4-23-18
 FD MAG/WASHER
 1" DOWN
 10-4-18, JFO

O.D.O.T. DISTRICT 2 SURVEY OFFICE (USE ONLY)

PERSONNEL _____ REFERENCE NO. 13 A SHEET 22 OF 33
 NOTES HUSS DATE 07/19/10 ROUTE SR 590
 H.C. FINTEL WEATHER FAIR COUNTY SANDUSKY
 R.C. CANTERBURY TEMP. +83° TOWNSHIP JACKSON
 _____ SECTION 3
 _____ T 4 N R 14 E

TYPE MONUMENT PK/WASHER
 ON SURFACE - ~~BELOW~~ ON
~~LEFT - C PAV'T~~ - RIGHT 1.9'
8.5' TO LT EDGE PAVEMENT
 S.L.M. 345+57
 GRID: NORTHING: 610918.793 EASTING: 1769578.128



O.D.O.T. DISTRICT 2 SURVEY OFFICE

PERSONNEL _____

REFERENCE NO. _____

SHEET 18 OF 18

NOTES CHENEY

H.C. RIPPLE

DATE 5-24-1993

ROUTE #590

R.C. BARBOUR

WEATHER CLOUDY

COUNTY SANDUSKY

GEYMAN

TEMP. 65°

TOWNSHIP JACKSON

SECTION 3

T4N R14E

TYPE MONUMENT P.K. NAIL

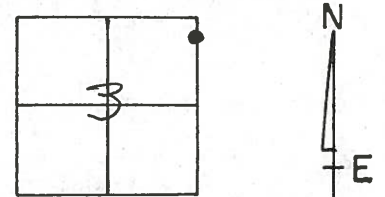
ON SURFACE - ~~BELOW~~ ON

~~LEFT~~ - Q. PAV'T. - RIGHT 1.7'

12' TO LT. EDGE PAVEMENT

S.L.M. 345+57

13A



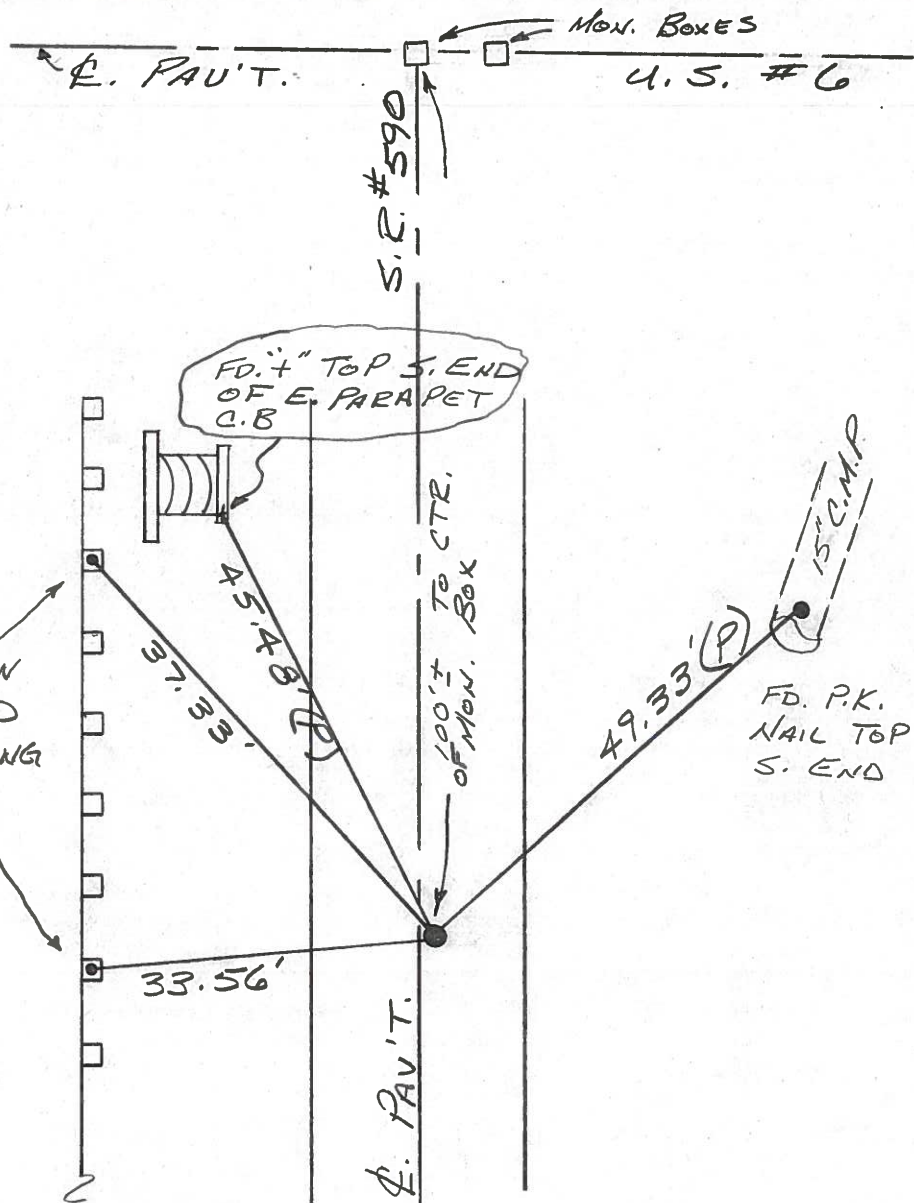
RECORD: 8-11-1982

FD. NAIL 2" BELOW SURFACE - SOURCE UNKNOWN ON Q. PAV'T.

SET P.K. 2' RT. OF Q. PAV'T. (12-9-82)

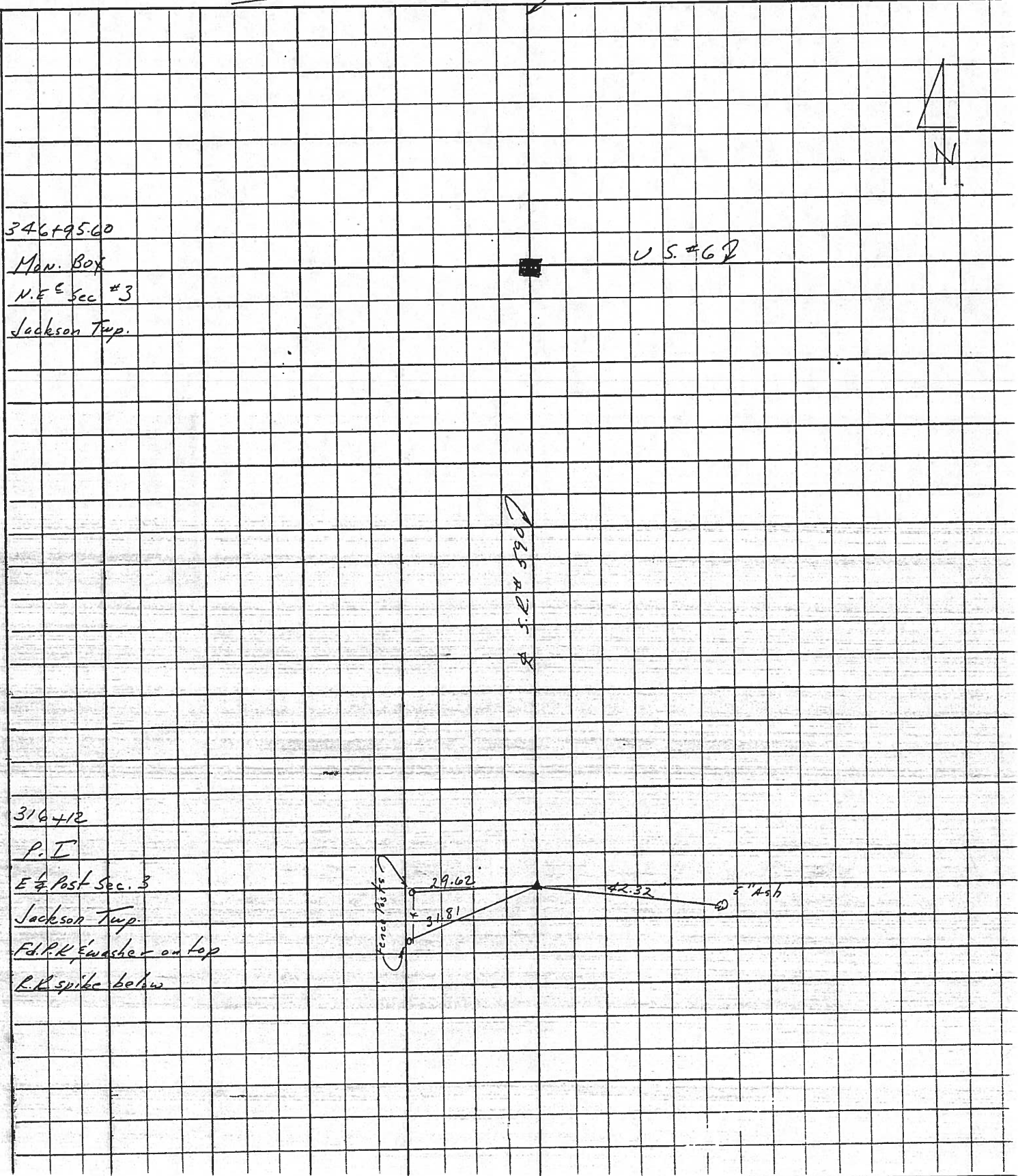
SET PK/WASHER
6-29-1993
ECC

SET NIS. ON TOP OF WOOD POSTS - PARKING LOT G.P.



PERSONNEL	TITLE	PERSONNEL	TITLE	COUNTY	DATE	WEATHER	TEMP
Cronin				Sandusky	4/4/85	overcast-rain	47°
Ripple				S. R. #590			
Geyman				SEC. Colv. San. 590 - D6.15			
Barbour							

DESCRIPTION Control Ties LEFT CENTER LINE R/W RIGHT JOB NO.



County SANDUSKY S.R. 590

Date 8-11-82

Township JACKSON

Weather clear

Section 3

Temp. +70°

T4N, R4E

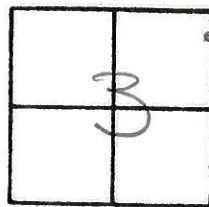
Personnel HOFFMAN

Householder

Loehrke

BARNHISEL

13A



Fd. Nail 2" below surface - Source UNKNOWN
ON & PAUT. S.R. 590.

Set P.K. 12-9-82
SWH
2.0' RT. of & PAUT

