

O.D.O.T. DISTRICT 2 SURVEY OFFICE (USE ONLY)

PERSONNEL

REFERENCE NO. 13 B

SHEET 25 OF 33

NOTES RHOADES DATE 2/27/18

H.C. O'DONNELL WEATHER SUNNY

R.C. SEAMAN TEMP. 42°

ROUTE SR 590

COUNTY SANDUSKY

TOWNSHIP WASHINGTON

SECTION 34

DWG BY MILLER PID 101240

T 5 N R 14 E

TYPE MONUMENT MAG/WASHER

ON SURFACE - ~~BELOW~~ ON

OFFSET Q PAVEMENT 10.5' LT : ~~RT~~

ON TO LT EDGE PAVEMENT

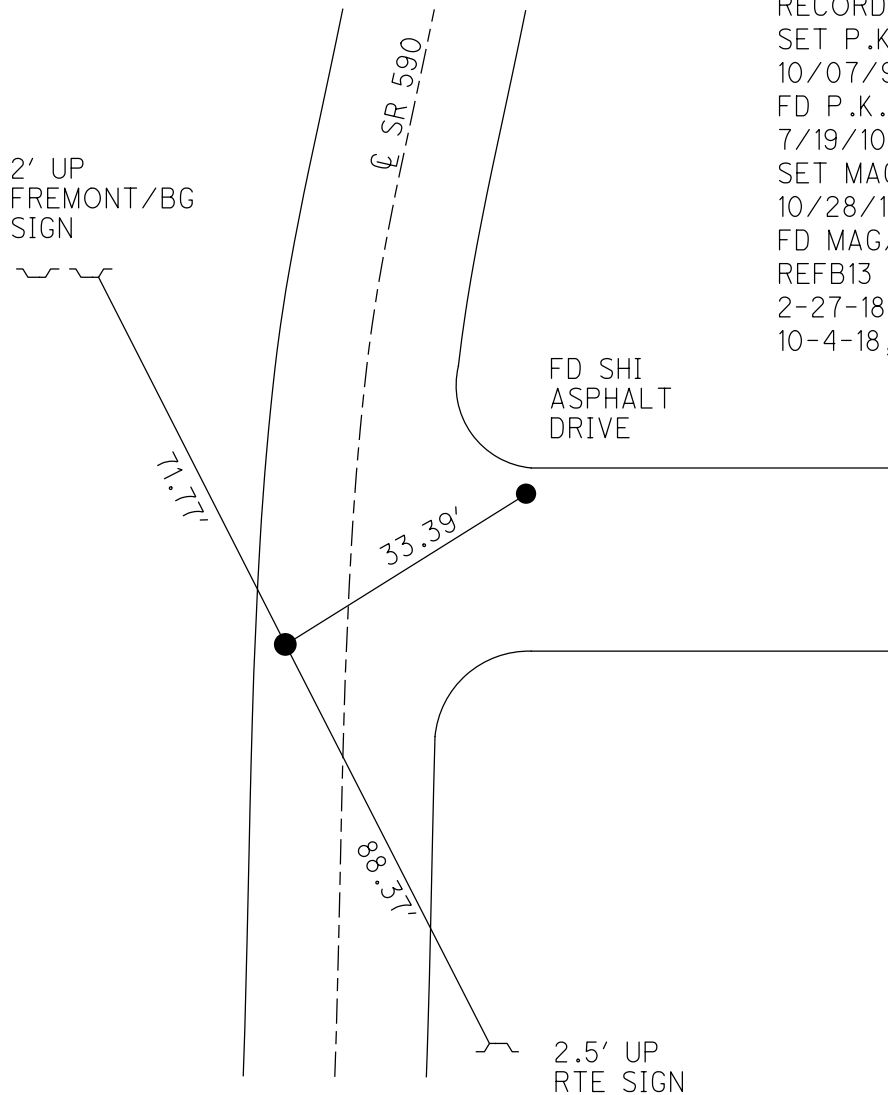
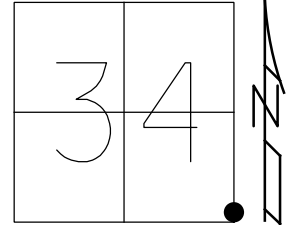
STATION: 349+11

HORIZ.DATUM: NAD83-2011

GEOID: NAVD88-2012A

GRID: NORTHING: 611235.949

EASTING: 1769592.685

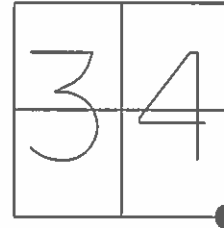


RECORD: P.I.  
SET P.K./WASHER  
10/07/96, MB  
FD P.K./WASHER  
7/19/10  
SET MAG/WASHER  
10/28/10, MC  
FD MAG/WASHER  
REFB13  
2-27-18, 4-23-18  
10-4-18, JFO

O.D.O.T. DISTRICT 2 SURVEY OFFICE (USE ONLY)

PERSONNEL \_\_\_\_\_ REFERENCE NO. 13 B SHEET 24 OF 33  
 NOTES CANTERBURY DATE 11/01/10 ROUTE SR 590  
 H.C. HUSS WEATHER SUNNY COUNTY SANDUSKY  
 R.C. FINGER TEMP. +39° TOWNSHIP WASHINGTON  
 \_\_\_\_\_ SECTION 34  
 \_\_\_\_\_ T 5 N R 14 E

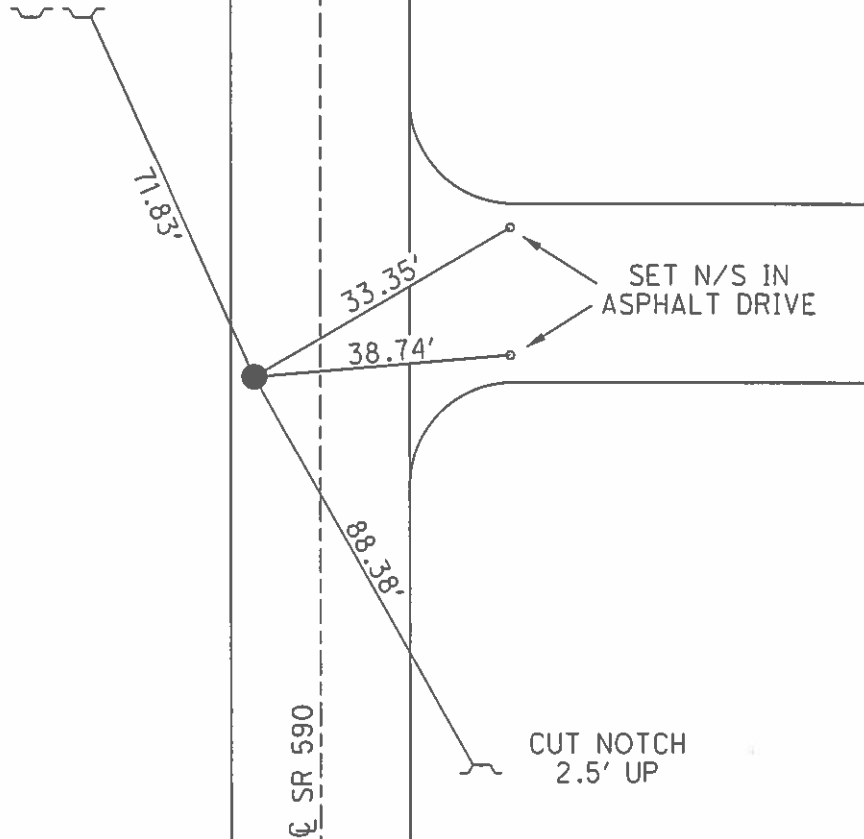
TYPE MONUMENT \_\_\_\_\_ PK/WASHER \_\_\_\_\_  
 ON SURFACE - ~~BELOW~~ \_\_\_\_\_ ON \_\_\_\_\_  
 LEFT - ~~C~~ PAV'T - ~~RIGHT~~ \_\_\_\_\_ 10.5'  
 \_\_\_\_\_ TO \_\_\_\_\_ EDGE PAVEMENT  
 S.L.M. \_\_\_\_\_ 349+11



GRID: NORTHING: 611235.926 EASTING: 1769592.577

RECORD: PI  
 SET PK/WASHER 10/07/96 MB  
 SET MAG/WASHER 10/28/10 EF

FD NOTCH  
 2' UP



# O.D.O.T. DISTRICT 2 SURVEY OFFICE

PERSONNEL \_\_\_\_\_

REFERENCE NO. \_\_\_\_\_

SHEET 1 OF 10

NOTES BARNHISEL

H.C. ROUSOS

R.C. HANES

DATE 8-7-96

WEATHER SUNNY

TEMP. +82°

ROUTE 590

COUNTY SANDUSKY

TOWNSHIP WASHINGTON

SECTION 34

T. 5 N R. 14 E

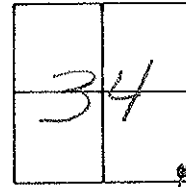
TYPE MONUMENT P.K. & WASHER

ON SURFACE - ~~BELOW~~ YES

LEFT-~~☉~~ PAV'T. - ~~RIGHT~~ 11.6

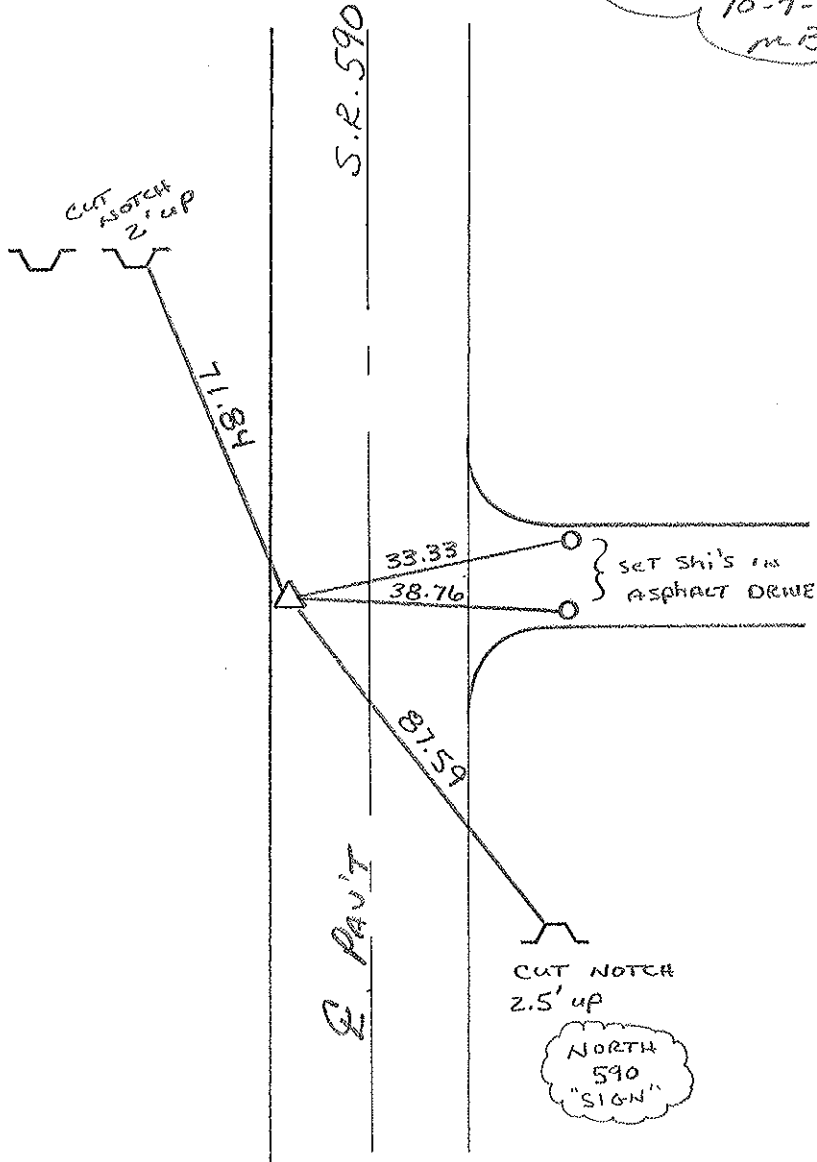
1.2 TO LT EDGE PAVEMENT

S.L.M. 349 + 11



RECORDED : P.I.

Reset P.K. & WASHER  
10-7-96  
MB



Resurfaced 1996

②

O.D.O.T. DISTRICT 2 SURVEY OFFICE

PERSONNEL

REFERENCE NO. \_\_\_\_\_

SHEET \_\_\_\_\_ OF \_\_\_\_\_

NOTES Cronin

H.C. Rippie

R.C. Geyman

Barbour

DATE 8/19/86

WEATHER sunny

TEMP. 83°

ROUTE #590

COUNTY Sandusky

TOWNSHIP Washington

SECTION 34

T 5 N R 14 E

TYPE MONUMENT P.K. & washer

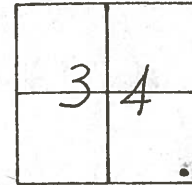
ON SURFACE - BELOW on surface

LEFT- & PAV'T. - RIGHT 11' ± Lt. & P.V.T.

TO EDGE PAVEMENT

S.L.M. \_\_\_\_\_

13B



P.I.  
Sta.  
P.K. & washer at top same  
atop R.R. spike

