

O.D.O.T. DISTRICT 2 SURVEY OFFICE (USE ONLY)

PERSONNEL

REFERENCE NO. 15

SHEET 27 OF 33

NOTES RHOADES
 H.C. O'DONNELL
 R.C. SEAMAN

DATE 2/27/18
 WEATHER SUNNY
 TEMP. 49°

ROUTE SR 590
 COUNTY SANDUSKY
 TOWNSHIP WASHINGTON
 SECTION 34
 T 5 N R 14 E

DWG BY MILLER PID 101240

TYPE MONUMENT MAG/WASHER

ON SURFACE - ~~BELOW~~ ON

OFFSET CL PAVEMENT 2.6' LT : ~~RT~~

7.5' TO LT EDGE PAVEMENT

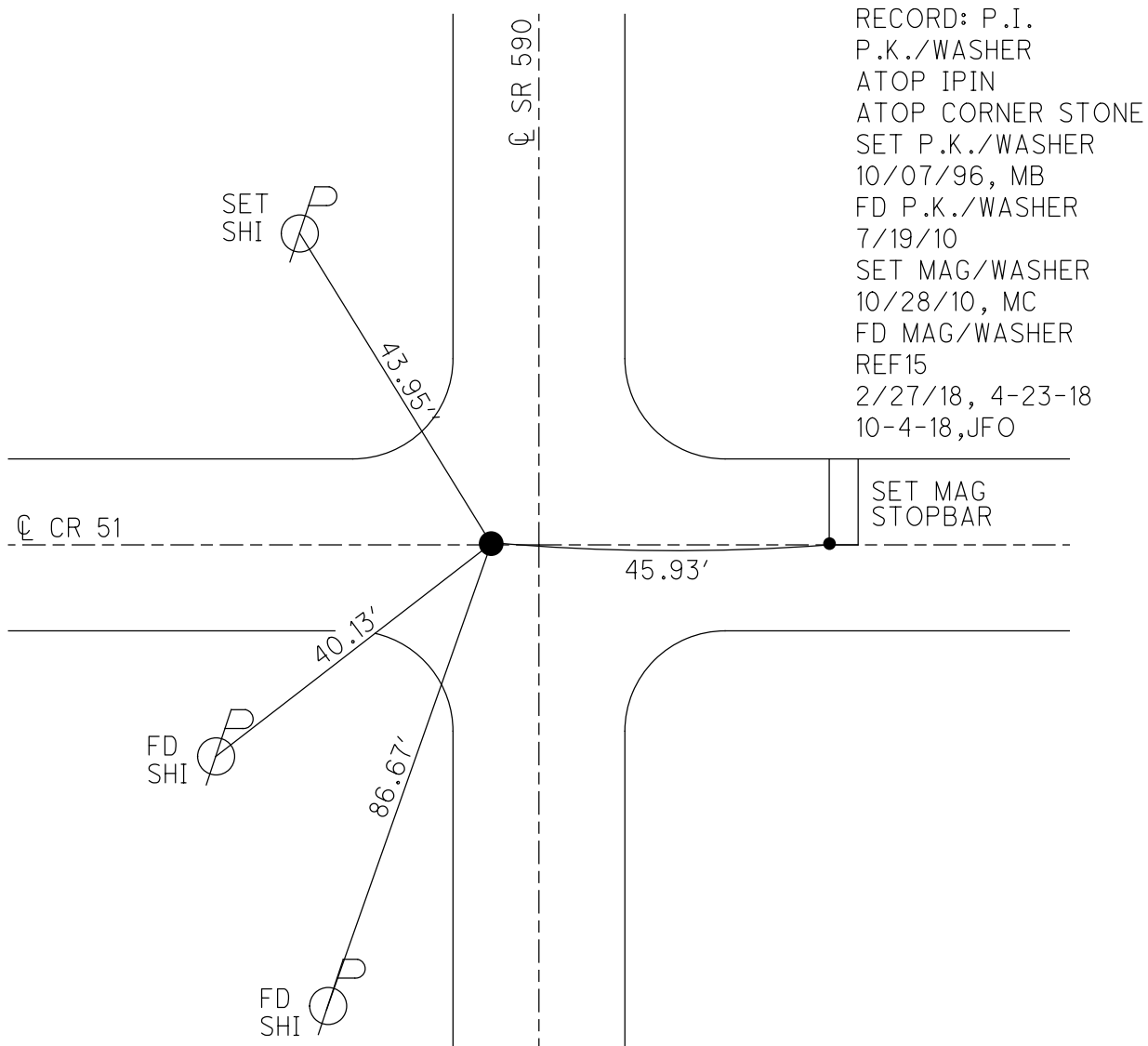
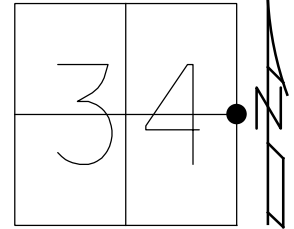
STATION: 373+60

HORZ.DATUM: NAD83-2011

GEOID: NAVD88-2012A

GRID: NORTHING: 613658.454

EASTING: 1769827.183



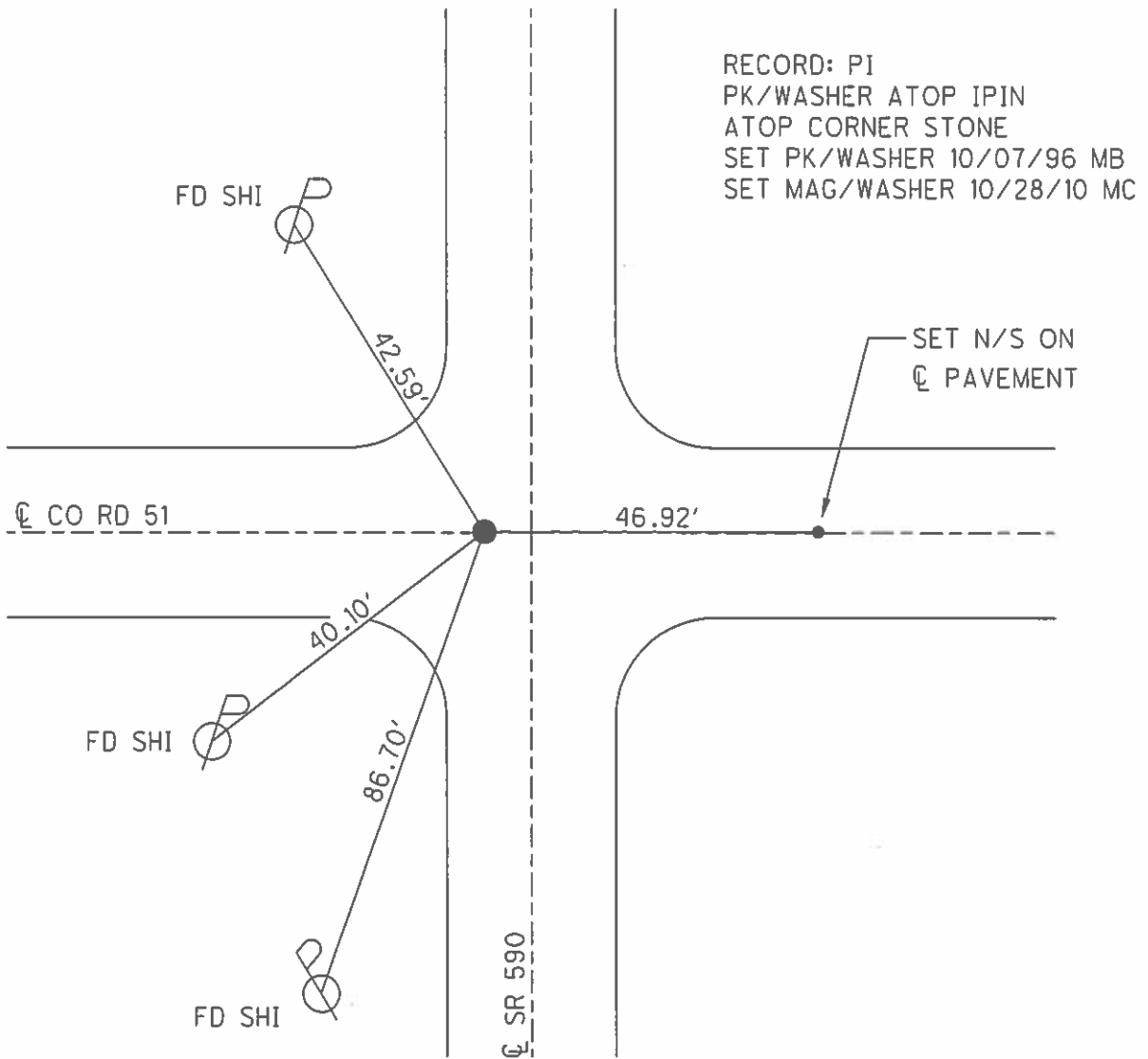
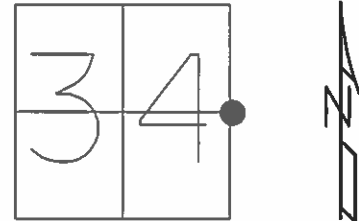
RECORD: P.I.
 P.K./WASHER
 ATOP IPIN
 ATOP CORNER STONE
 SET P.K./WASHER
 10/07/96, MB
 FD P.K./WASHER
 7/19/10
 SET MAG/WASHER
 10/28/10, MC
 FD MAG/WASHER
 REF15
 2/27/18, 4-23-18
 10-4-18, JFO

SET MAG
 STOPBAR

O.D.O.T. DISTRICT 2 SURVEY OFFICE (USE ONLY)

PERSONNEL _____ REFERENCE NO. 15 SHEET 26 OF 33
 NOTES CANTERBURY DATE 11/01/10 ROUTE SR 590
 H.C. HUSS WEATHER SUNNY COUNTY SANDUSKY
 R.C. FINGER TEMP. +39° TOWNSHIP WASHINGTON
 _____ SECTION 34
 _____ T 5 N R 14 E

TYPE MONUMENT _____ PK/WASHER _____
 ON SURFACE - ~~BELOW~~ _____ ON _____
 LEFT - ~~C PAV'T~~ - ~~RIGHT~~ _____ 2.6' _____
7.5' TO LT EDGE PAVEMENT
 S.L.M. _____ 373+60
 GRID: NORTHING: 613658.525 EASTING: 1769827.119



O.D.O.T. DISTRICT 2 SURVEY OFFICE

PERSONNEL _____

REFERENCE NO. 15

SHEET 4 OF 10

NOTES BARNHISEL

H.C. ROUSOS

DATE 8-7-96

ROUTE 590

R.C. HANES

WEATHER SUNNY

COUNTY SANDUSKY

TEMP. +85°

TOWNSHIP WASHINGTON

SECTION 34

T 5 N R 14 E

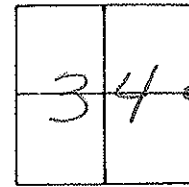
TYPE MONUMENT Lg RR Spk w/cnt PUNCH

ON SURFACE - BELOW YES

LEFT- & PAV'T. - RIGHT 3.0

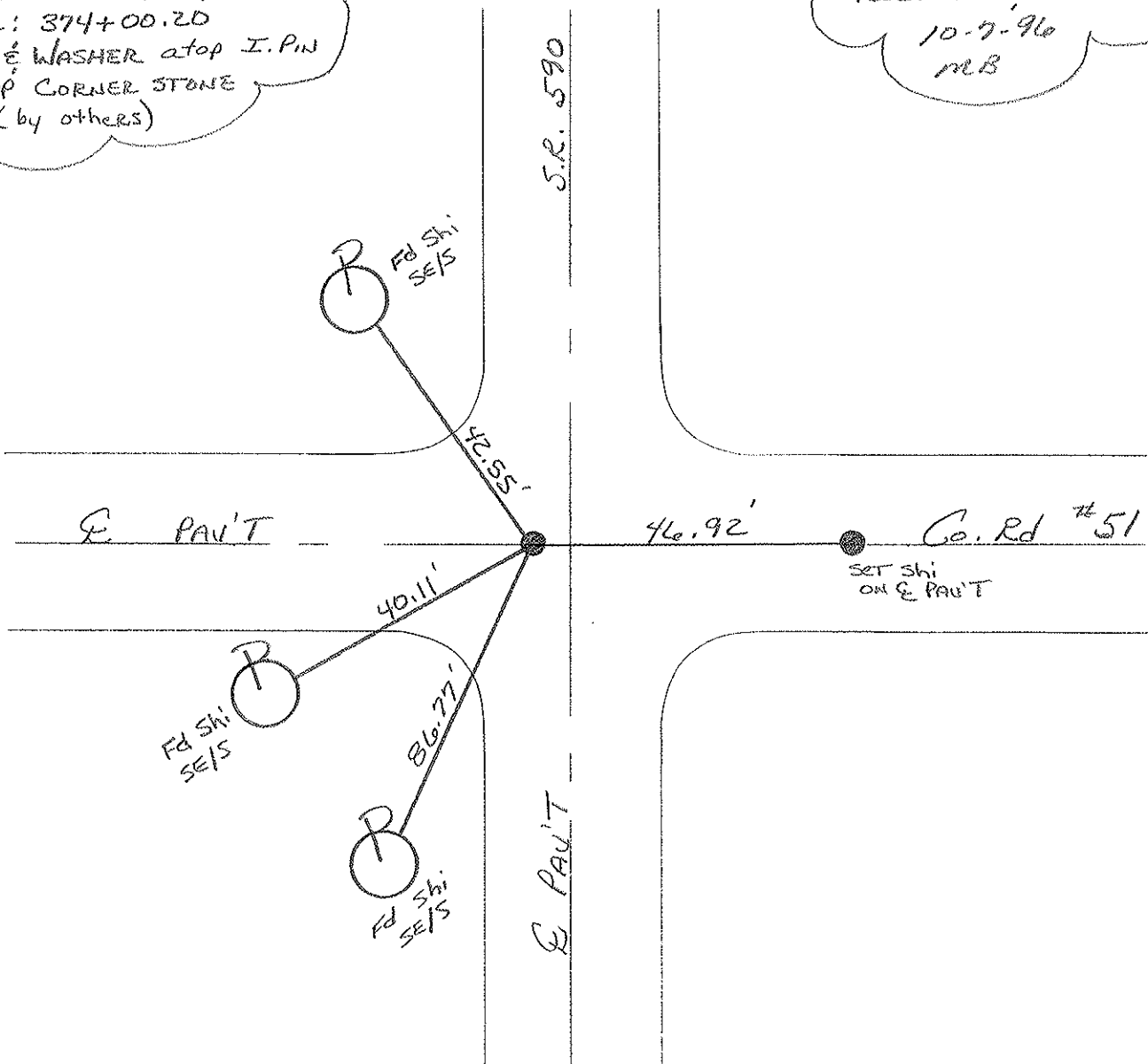
7.5 TO LT. EDGE PAVEMENT

S.L.M. 373+60



RECORD: P.I.
Sta: 374+00.20
PK & WASHER atop I. PIN
atop CORNER STONE
(by others)

RESET PK & WASHER
10-7-96
M.B.



O.D.O.T. DISTRICT 2 SURVEY OFFICE

③

PERSONNEL

REFERENCE NO. 15

SHEET OF

NOTES Cronin

H.C. Ripple

R.C. Geyman

Barbour

DATE 8/19/86

WEATHER sunny

TEMP. 83°

ROUTE #590

COUNTY Sandusky

TOWNSHIP Washington

SECTION 34 E 35

T 5 N R 14 E

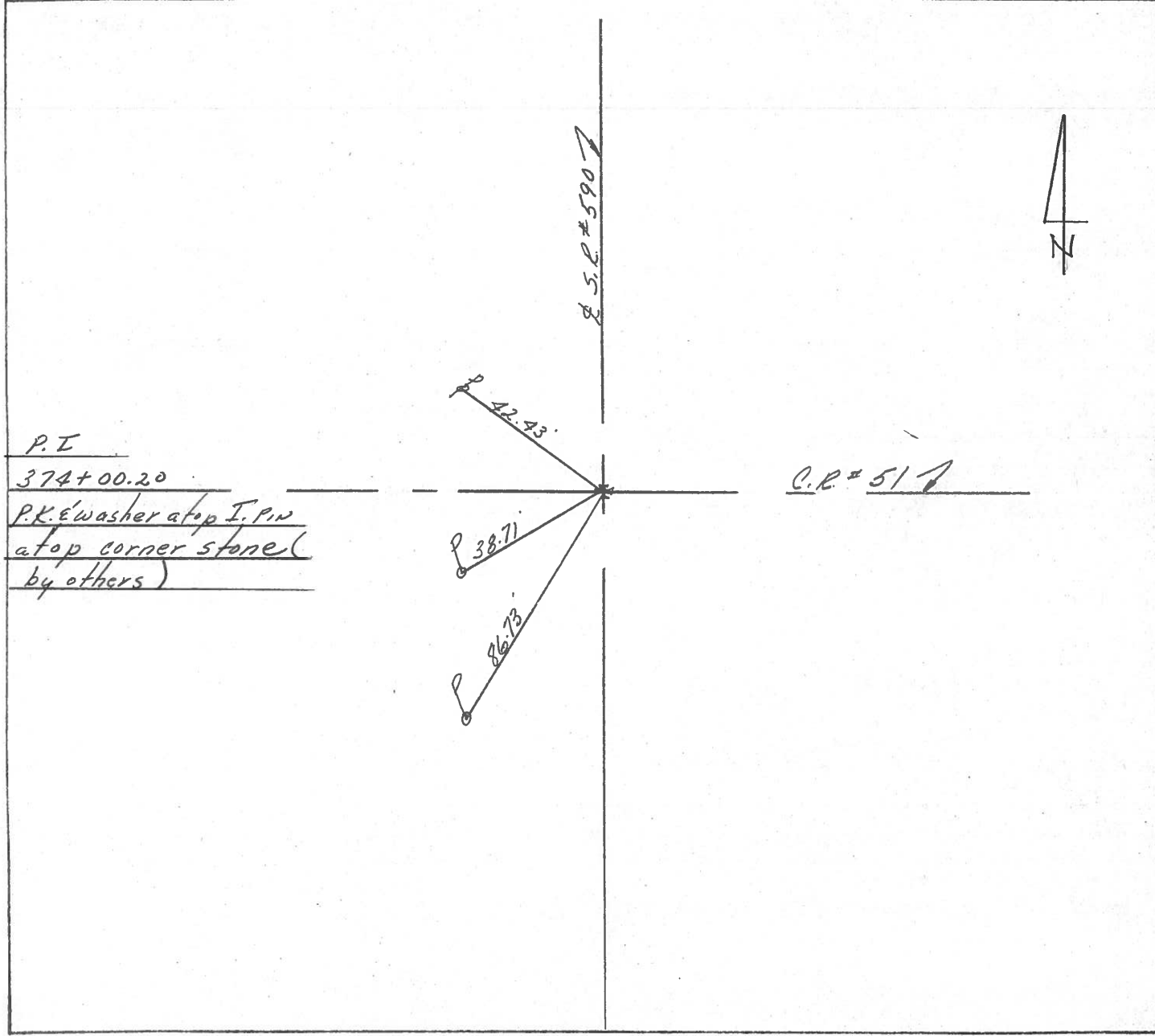
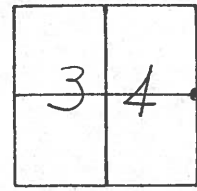
TYPE MONUMENT P.K. Washer

ON SURFACE - BELOW on surface

LEFT - & PAV'T. - RIGHT 3' Lt. & P.V.T

TO EDGE PAVEMENT

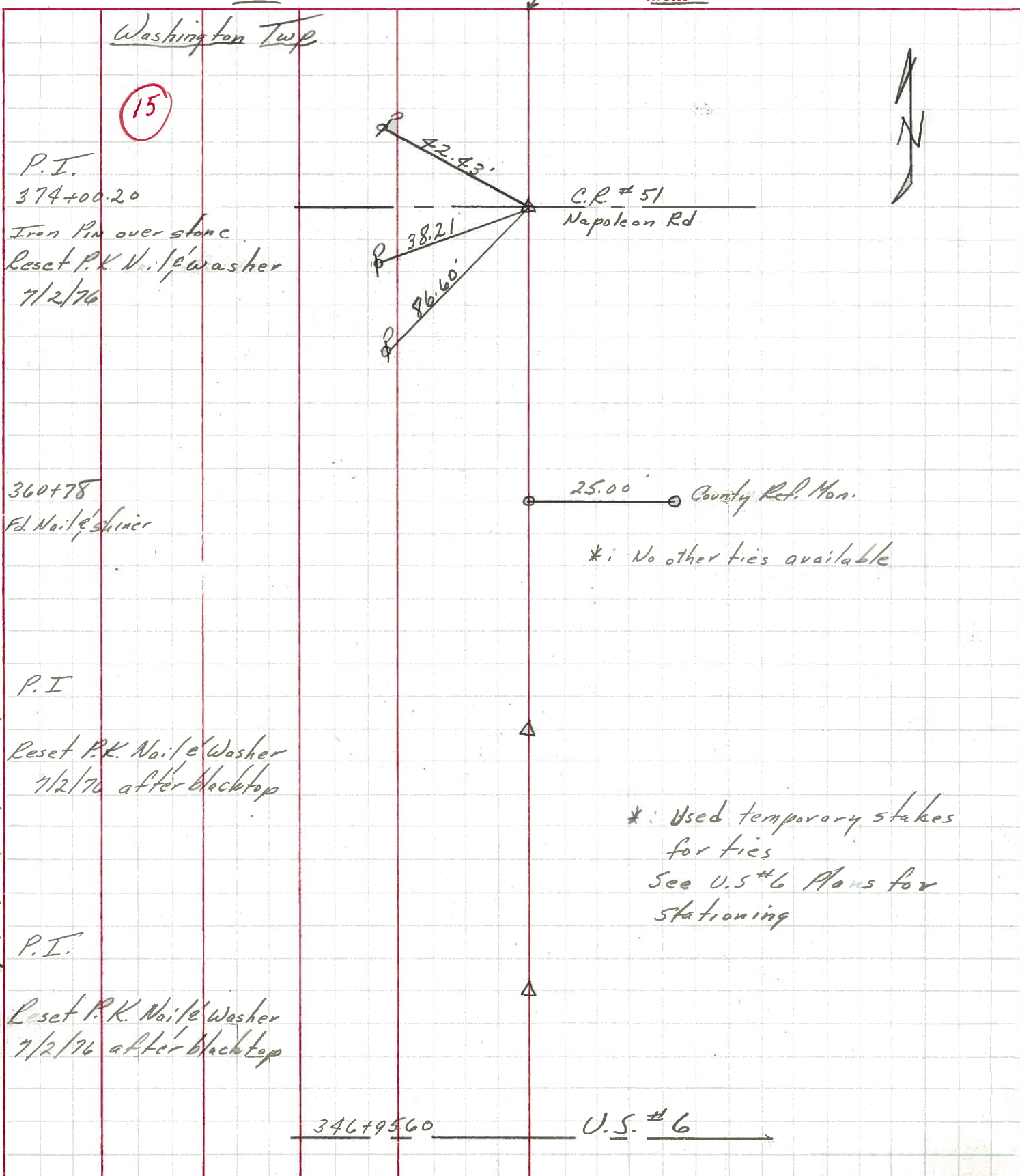
S.L.M. 7.0834±



PERSONNEL	TITLE	PERSONNEL	TITLE
<u>Cronin</u>		<u>Schneider</u>	
<u>Ripple</u>		<u>Mosser</u>	
<u>Geyman</u>		<u>Barbour</u>	

COUNTY Sandusky DATE 8/4/76
 S. R. #590 WEATHER sunny
 SEC. U.S #6 to U.S #20 TEMP. 68°

DESCRIPTION Ties for Control Points - Ref. Field Bk. Sa. 55 JOB NO. _____



PERSONNEL TITLE PERSONNEL TITLE

Schneider Potts

COUNTY Sandusky DATE 4-29-68

Mosser

S. R. 590 WEATHER Fair

Barbour

SEC. U.S. #6 North TEMP. 70°

Redding

DESCRIPTION Ties for Control Points JOB NO.

LEFT CENTER LINE RIGHT

