

O.D.O.T. DISTRICT 2 SURVEY OFFICE (USE ONLY)

PERSONNEL

REFERENCE NO. 16

SHEET 28 OF 33

NOTES RHOADES DATE 2/27/18

H.C. O'DONNELL WEATHER SUNNY

R.C. SEAMAN TEMP. 42°

ROUTE SR 590

COUNTY SANDUSKY

TOWNSHIP WASHINGTON

SECTION 34

T 5 N R 14 E

DWG BY MILLER PID 101240

TYPE MONUMENT MAG/WASHER

ON SURFACE - ~~BELOW~~ ON

OFFSET  $\varnothing$  PAVEMENT 3.4' LT : ~~RT~~

6.6' TO LT EDGE PAVEMENT

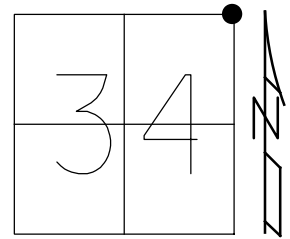
STATION: 400+10

HORZ.DATUM: NAD83-2011

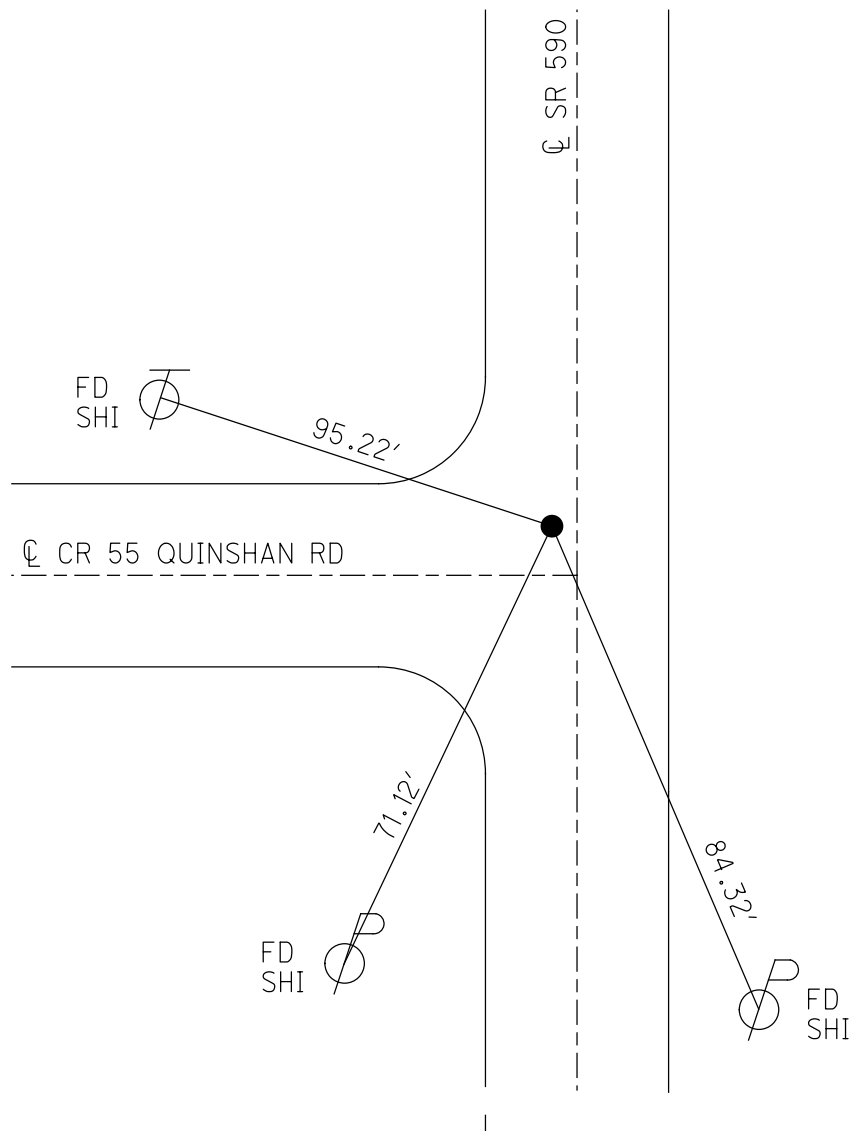
GEOID: NAVD88-2012A

GRID: NORTHING: 616304.207

EASTING: 1769934.059



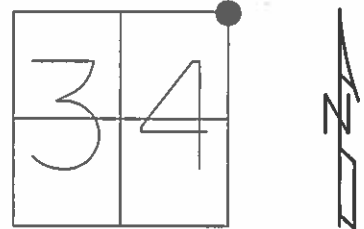
RECORD: P.I.  
 P.K./WASHER  
 ATOP P.K./WASHER  
 ATOP R.R.SPIKE IN HUB  
 SET P.K./WASHER  
 10/07/96, MB  
 FD P.K./WASHER  
 7/19/10  
 SET MAG/WASHER  
 10/28/10, MC  
 FD MAG/WASHER  
 REF16  
 2-27-18, 4-23-18  
 10-4-18, JFO



O.D.O.T. DISTRICT 2 SURVEY OFFICE (USE ONLY)

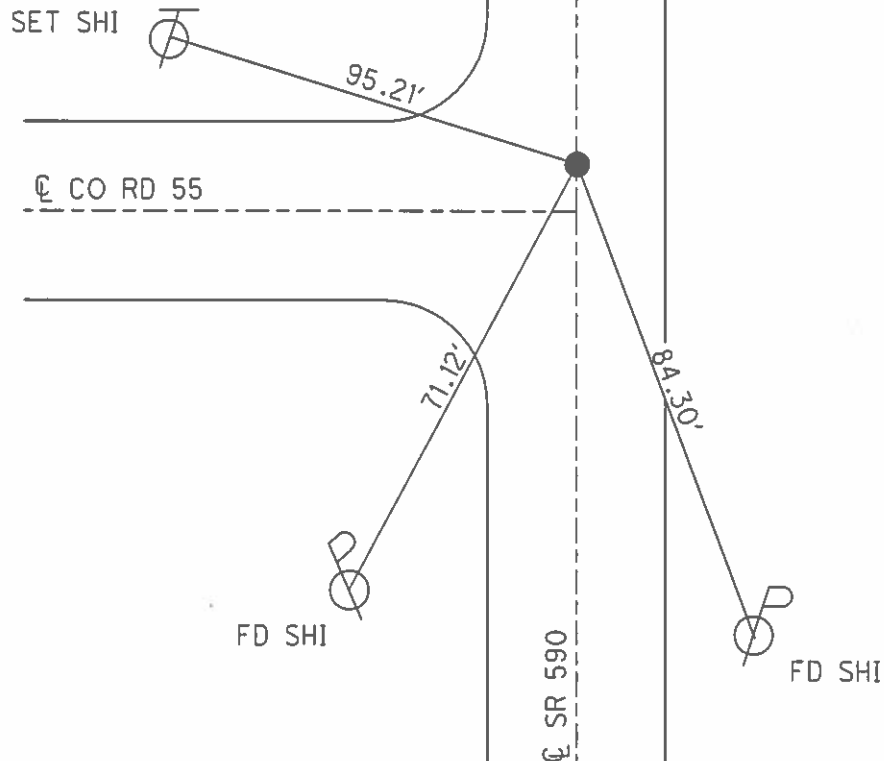
PERSONNEL \_\_\_\_\_ REFERENCE NO. 16 SHEET 27 OF 33  
 NOTES CANTERBURY DATE 11/01/10 ROUTE SR 590  
 H.C. HUSS WEATHER SUNNY COUNTY SANDUSKY  
 R.C. FINGER TEMP. +39° TOWNSHIP WASHINGTON  
 SECTION 34  
 T 5 N R 14 E

TYPE MONUMENT \_\_\_\_\_ PK/WASHER \_\_\_\_\_  
 ON SURFACE - ~~BELOW~~ \_\_\_\_\_ ON \_\_\_\_\_  
 LEFT - ~~C~~ PAV'T - ~~RIGHT~~ \_\_\_\_\_ 3.4'  
6.6' TO LT EDGE PAVEMENT  
 S.L.M. \_\_\_\_\_ 400+10



GRID: NORTHING: 616304.180 EASTING: 1769933.957

RECORD: PI  
 PK/WASHER ATOP PK/WASHER  
 ATOP RR SPK IN HUB  
 SET PK/WASHER 10/07/96 MB  
 SET MAG/WASHER 10/28/10 MC



# O.D.O.T. DISTRICT 2 SURVEY OFFICE

PERSONNEL \_\_\_\_\_

REFERENCE NO. 16

SHEET 5 OF 10

NOTES BARNHISEL

H.C. Rousos

R.C. HANES

DATE 8-7-96

WEATHER SUNNY

TEMP. +85°

ROUTE 590

COUNTY SANOUSKY

TOWNSHIP WASHINGTON

SECTION 34

T. 5 N R. 14 E

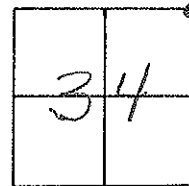
TYPE MONUMENT PK & WASHER

ON SURFACE - ~~BELOW~~ YES

LEFT-~~E~~ PAV'T. - ~~RIGHT~~ 3.6

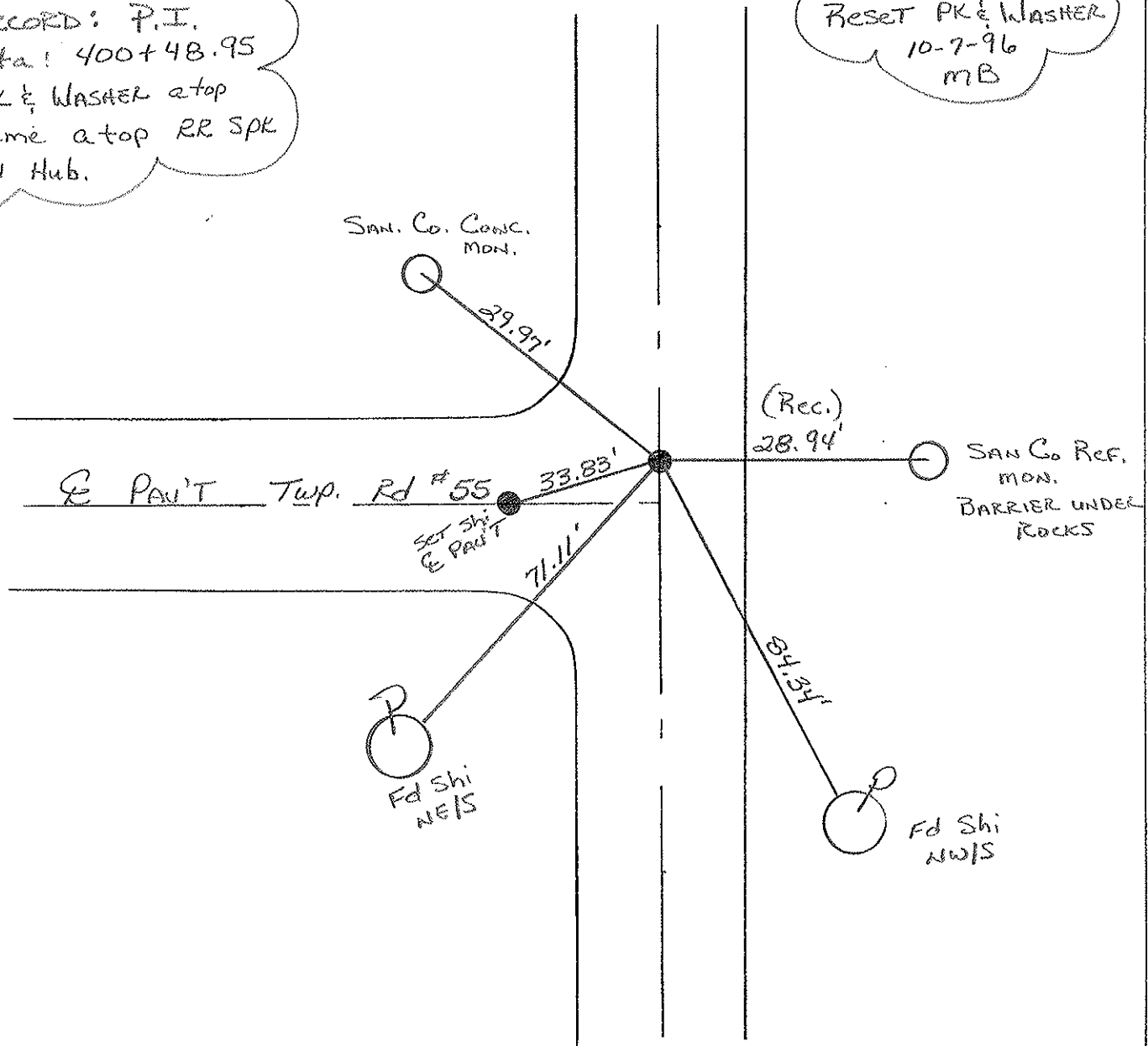
6.6 TO LT EDGE PAVEMENT

S.L.M. 400+10



Record: P.I.  
Sta: 400+48.95  
PK & WASHER atop  
same atop RR SPK  
IN Hub.

Reset PK & WASHER  
10-7-96  
MB



# O.D.O.T. DISTRICT 2 SURVEY OFFICE

PERSONNEL

REFERENCE NO. 16

SHEET      OF     

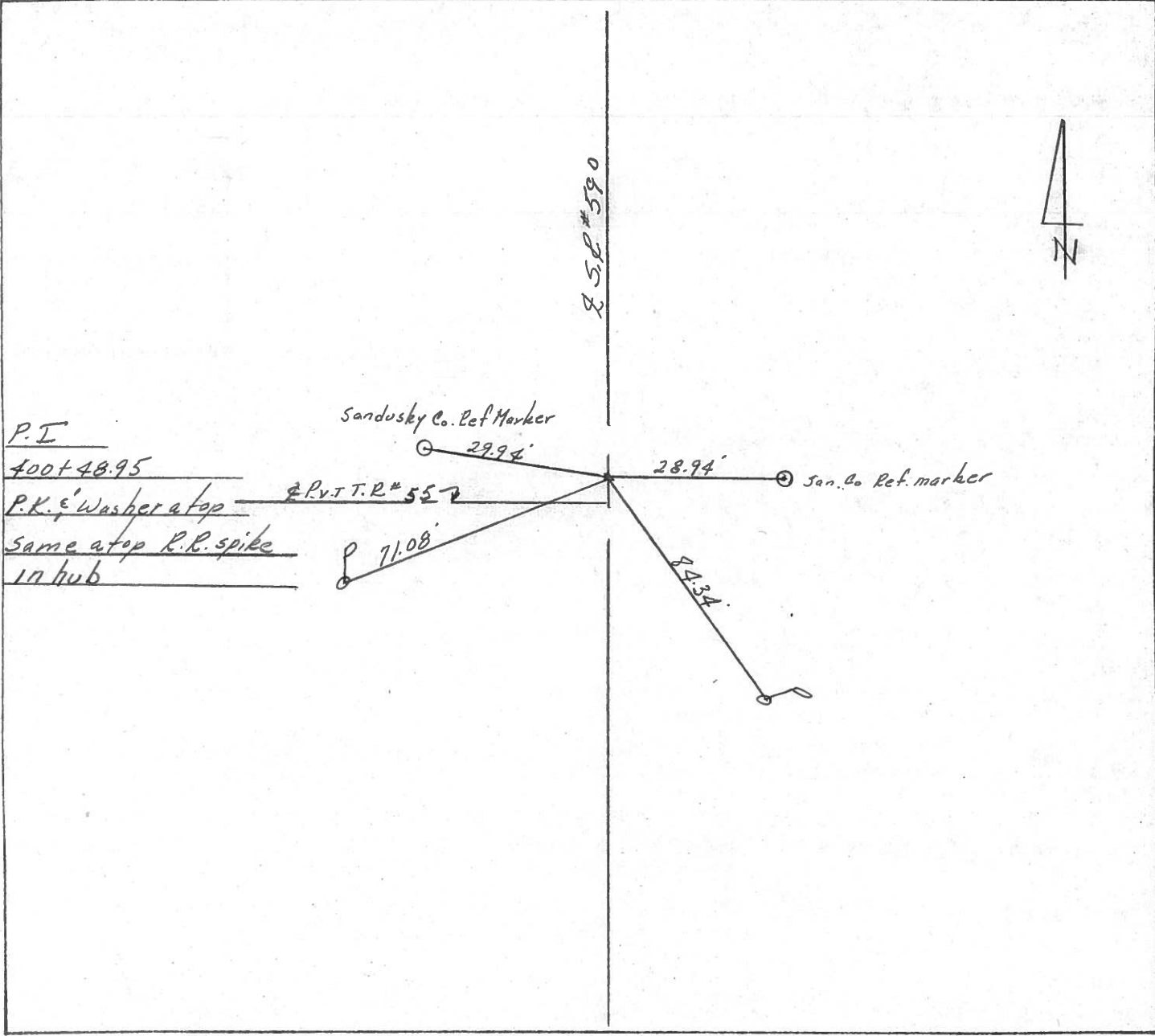
NOTES Cronin  
 H.C. Ripple  
 R.C. Geyman  
Barbour

DATE 8/19/86  
 WEATHER sunny  
 TEMP. 83°

ROUTE # 590  
 COUNTY Sandusky  
 TOWNSHIP Washington  
 SECTION 26, 27, 34, & 35  
T. 5 N R. 14 E

TYPE MONUMENT P.K. & washer  
 ON SURFACE - BELOW on surface  
 LEFT- & PAV'T. - RIGHT 3.5' Lt. & P.V.T.  
     TO      EDGE PAVEMENT  
 S.L.M. 7.585±

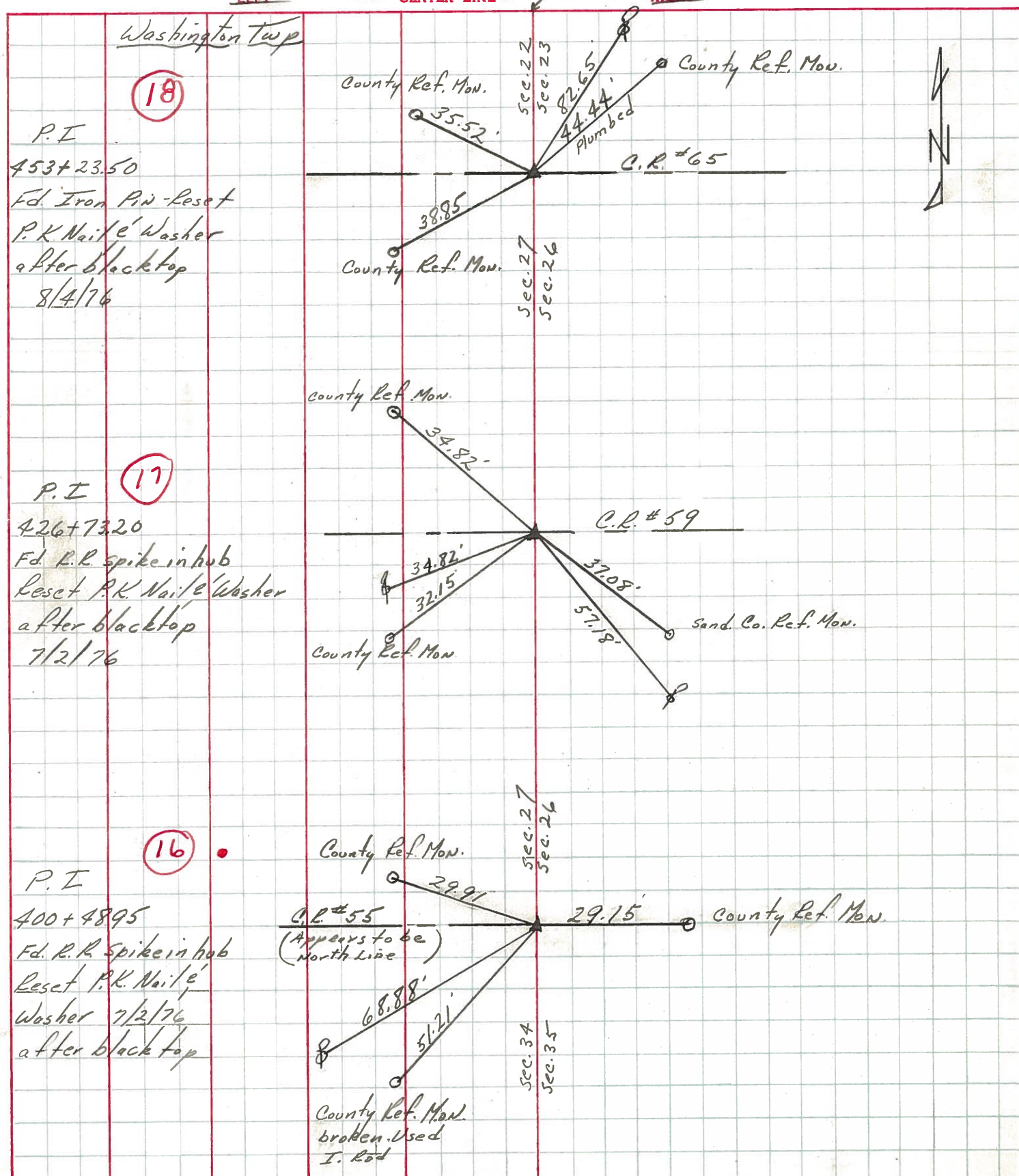
27	26
34	35



PERSONNEL	TITLE	PERSONNEL	TITLE
Cronin		Schneider	
Ripple		Mosser	
Geyman		Ripple	

COUNTY Sandosky DATE 8/4/76  
 S. R. # 590 WEATHER Sunny  
 SEC. U.S. # 6 to U.S. # 20 TEMP. 68°

DESCRIPTION Ties for Control Points - Ref. Field Bl. # Sa 55 JOB NO.



PERSONNEL	TITLE	PERSONNEL	TITLE
Schneider			
Mosser			
Redding			
Barbott			

COUNTY Sandusky DATE 4-29-68  
 S. R. 590 WEATHER Cloudy  
 SEC. 1.5 6 North TEMP. 70°

DESCRIPTION Ties for 5 JOB NO.

