

O.D.O.T. DISTRICT 2 SURVEY OFFICE (USE ONLY)

PERSONNEL

REFERENCE NO. 17

SHEET 29 OF 33

NOTES RHOADES DATE 2/27/18

H.C. O'DONNELL WEATHER SUNNY

R.C. SEAMAN TEMP. 42°

ROUTE SR 590

COUNTY SANDUSKY

TOWNSHIP WASHINGTON

SECTION 27

T 5 N R 14 E

DWG BY MILLER PID 101240

TYPE MONUMENT MAG/WASHER

ON SURFACE - ~~BELOW~~ ON

OFFSET  $\odot$  PAVEMENT 2.2' LT : ~~RT~~

9' TO LT EDGE PAVEMENT

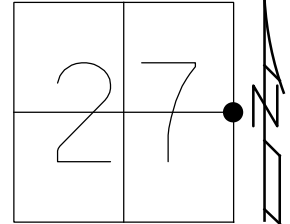
STATION: 426+38

HORZ.DATUM: NAD83-2011

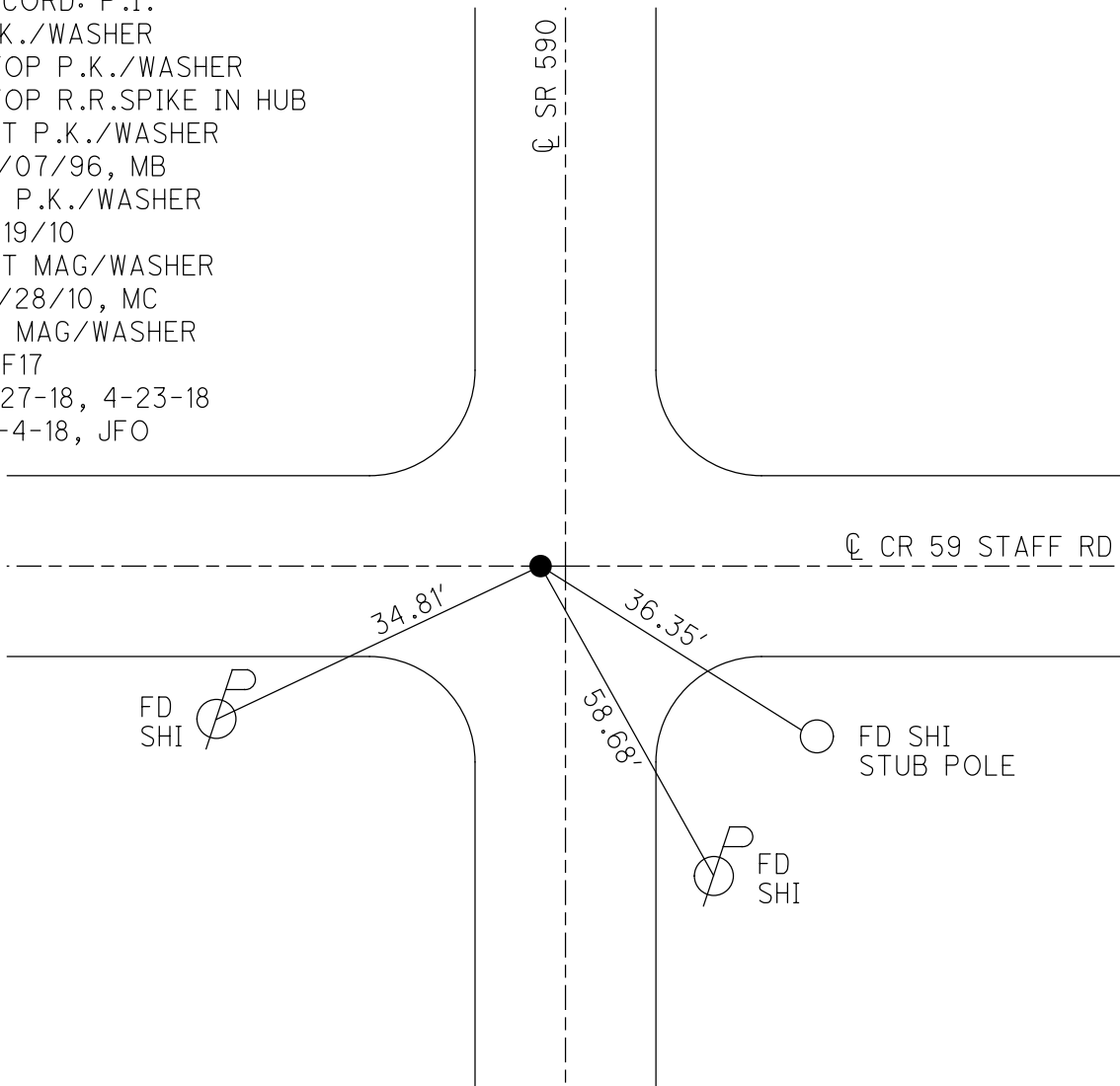
GEOID: NAVD88-2012A

GRID: NORTHING: 618927.742

EASTING: 1770018.902



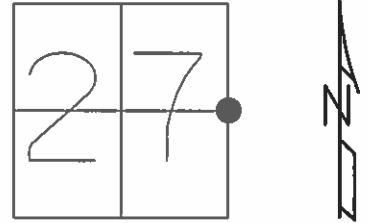
RECORD: P.I.  
 P.K./WASHER  
 ATOP P.K./WASHER  
 ATOP R.R.SPIKE IN HUB  
 SET P.K./WASHER  
 10/07/96, MB  
 FD P.K./WASHER  
 7/19/10  
 SET MAG/WASHER  
 10/28/10, MC  
 FD MAG/WASHER  
 REF17  
 2-27-18, 4-23-18  
 10-4-18, JFO



O.D.O.T. DISTRICT 2 SURVEY OFFICE (USE ONLY)

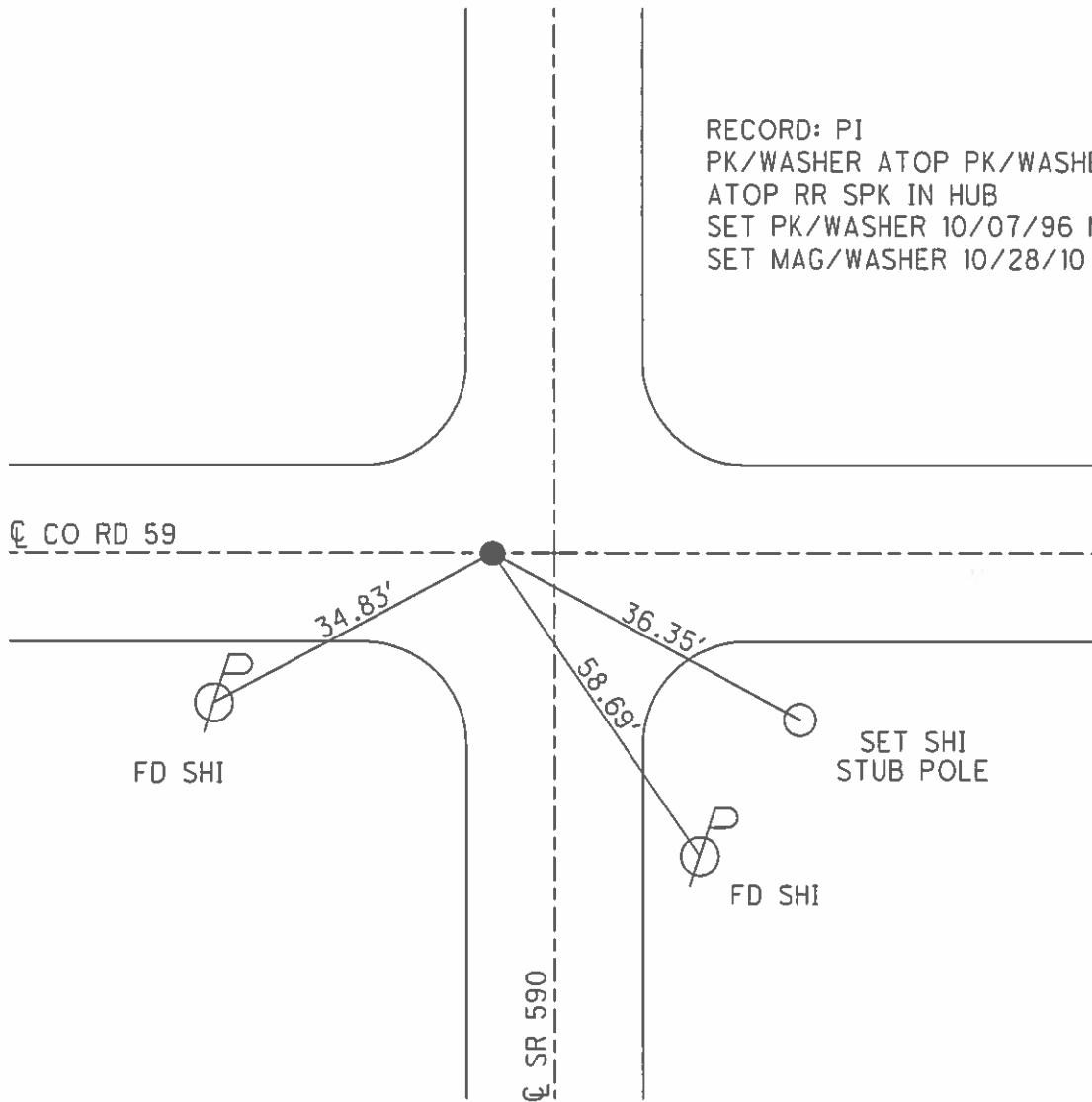
PERSONNEL \_\_\_\_\_ REFERENCE NO. 17 SHEET 28 OF 33  
 NOTES CANTERBURY DATE 11/01/10 ROUTE SR 590  
 H.C. HUSS WEATHER SUNNY COUNTY SANDUSKY  
 R.C. FINGER TEMP. +39° TOWNSHIP WASHINGTON  
 \_\_\_\_\_ SECTION 27  
 \_\_\_\_\_ T 5 N R 14 E

TYPE MONUMENT \_\_\_\_\_ PK/WASHER \_\_\_\_\_  
 ON SURFACE - ~~BELOW~~ \_\_\_\_\_ ON \_\_\_\_\_  
 LEFT - ~~C-PAV'T~~ - ~~RIGHT~~ \_\_\_\_\_ 1.8' \_\_\_\_\_  
9.0' TO LT EDGE PAVEMENT  
 S.L.M. \_\_\_\_\_ 426+38



GRID: NORTHING: 618927.754 EASTING: 1770018.785

RECORD: PI  
 PK/WASHER ATOP PK/WASHER  
 ATOP RR SPK IN HUB  
 SET PK/WASHER 10/07/96 MB  
 SET MAG/WASHER 10/28/10 EF



O.D.O.T. DISTRICT 2 SURVEY OFFICE

PERSONNEL

REFERENCE NO. 17

SHEET 6 OF 10

NOTES BARNHAISEL

H.C. ROUSOS

R.C. HANES

DATE 8-7-96

WEATHER SUNNY

TEMP. +85°

ROUTE 590

COUNTY SANDUSKY

TOWNSHIP WASHINGTON

SECTION 27

T. 5 N. R. 14 E

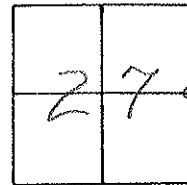
TYPE MONUMENT PK & WASHER

ON SURFACE - BELOW YES

LEFT- & PAV'T. - RIGHT 2.0

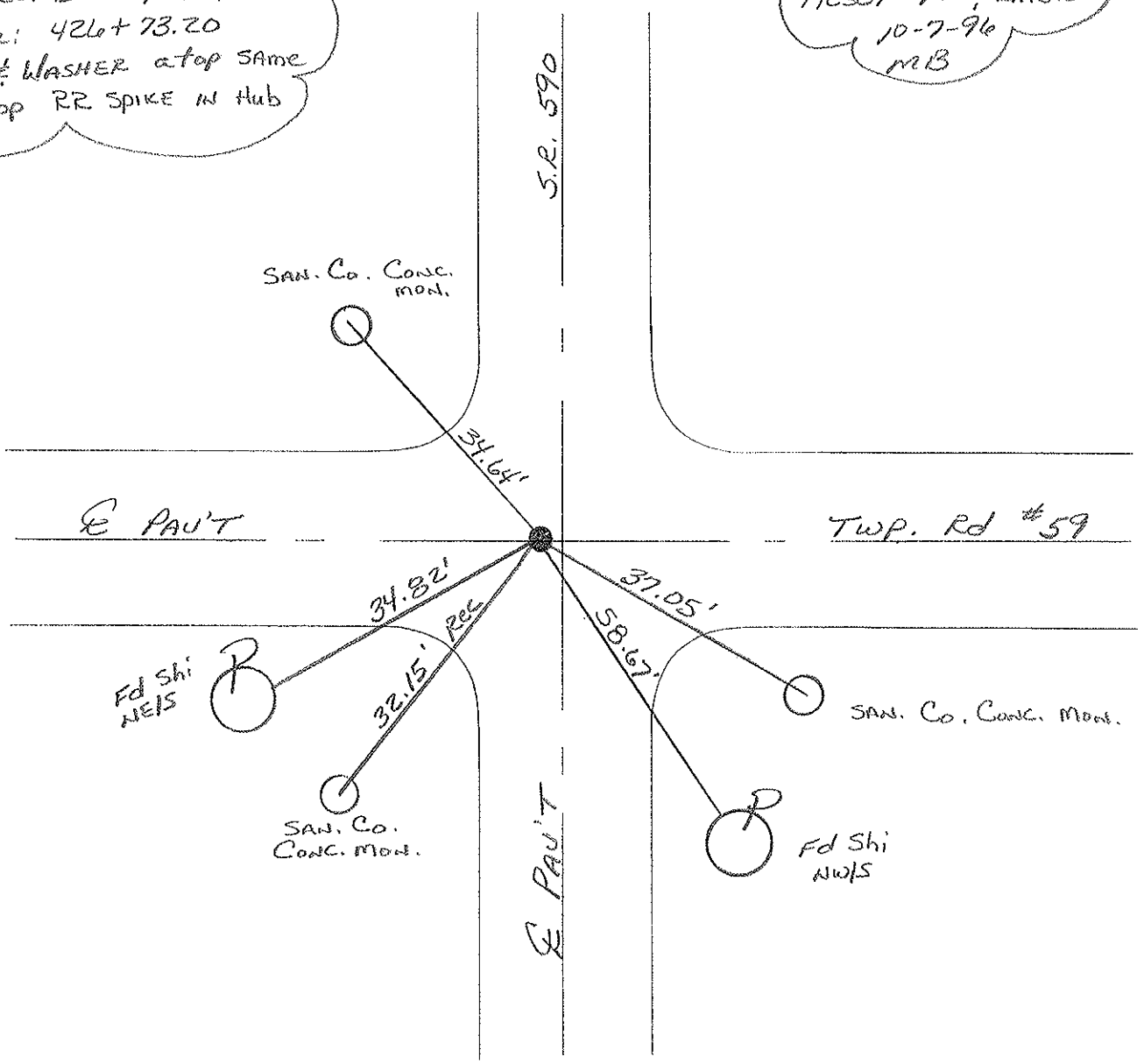
8.2 TO LT EDGE PAVEMENT

S.L.M. 426+38 ON E Rd WEST



RECORD: P.I.  
Sta: 426+73.20  
PK & WASHER atop SAME  
atop RR SPIKE IN Hub

RESET PK & WASHER  
10-7-96  
MB



O.D.O.T. DISTRICT 2 SURVEY OFFICE

PERSONNEL

REFERENCE NO. 17

SHEET      OF     

NOTES Cronin

H.C. Ripple

R.C. Geyman

Barbour

DATE 8/19/86

WEATHER sunny

TEMP. 83°

ROUTE # 590

COUNTY Sandusky

TOWNSHIP Washington

SECTION 26 & 27

T5 N R14 E

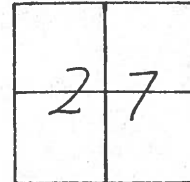
TYPE MONUMENT P.K. Washer

ON SURFACE - BELOW on surface

LEFT - & PAV'T. - RIGHT 2.5' Lt. & Rt

TO      EDGE PAVEMENT

S.L.M. 8.082±



S.L.M. # 590

San. Co. Ref. Mon.

34.63'

P.I.

426+73.20

P.K. Washer atop same atop

P.L. spike in hub

34.84'

32.15'

San. Co. Ref. Mon.

T.R. # 59

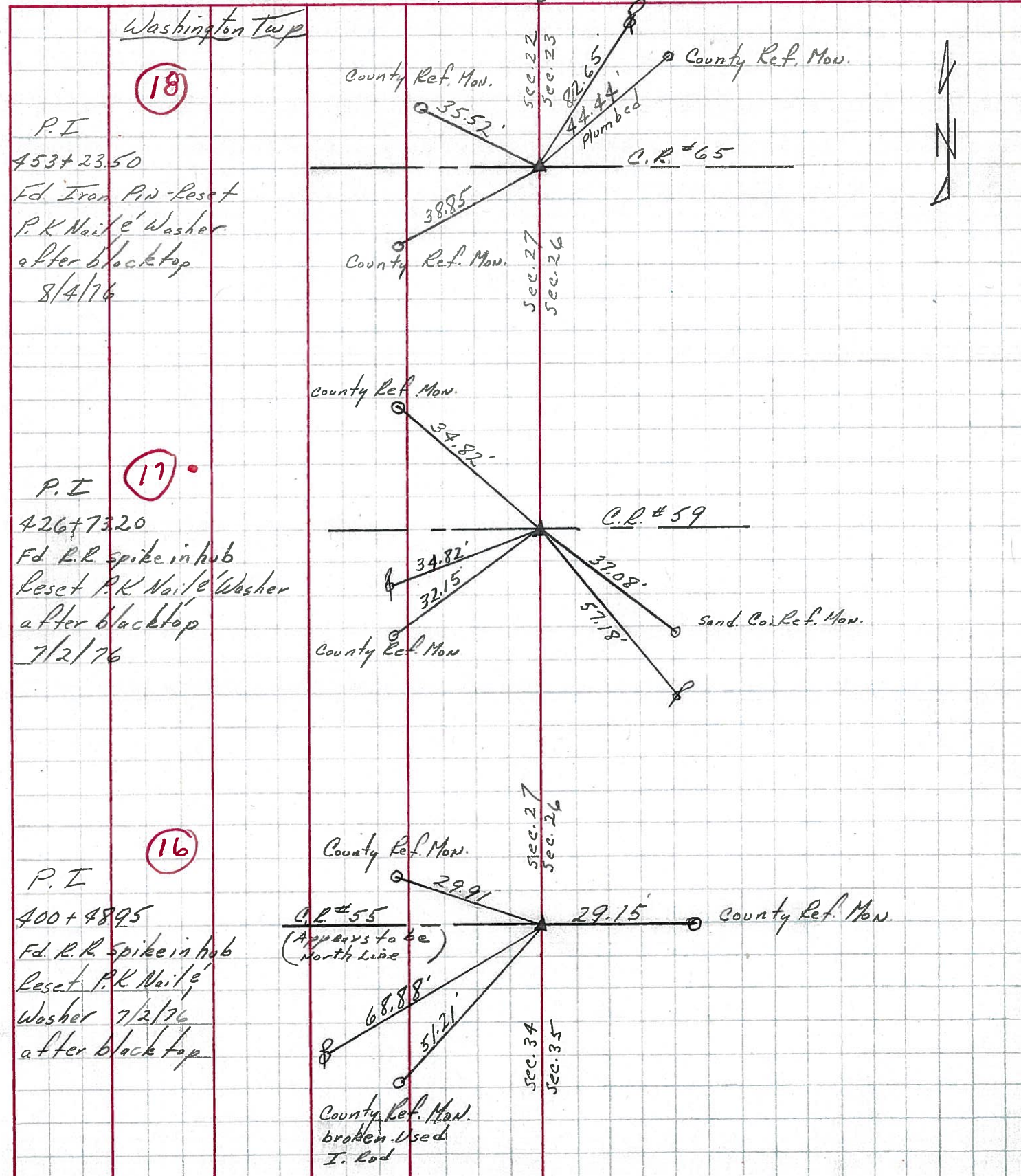
37.06'

58.63'

San. Co. Ref. Mon.

PERSONNEL	TITLE	PERSONNEL	TITLE	COUNTY	<u>Sandusky</u>	DATE	<u>8/4/76</u>
<u>Cronin</u>		<u>Schneider</u>		S. R.	<u># 590</u>	WEATHER	<u>Sunny</u>
<u>Ripple</u>		<u>Mosser</u>		SEC.	<u>U.S. #6 to U.S. #20</u>	TEMP.	<u>68°</u>
<u>Geyman</u>		<u>Ripple</u>					

DESCRIPTION Ties for Control Points - Ref. Field Bk. # Sa 55 JOB NO. \_\_\_\_\_



Washington Twp

(18)

P.I.

453+23.50

Fd. Iron Pin - Reset

P.K. Nail & Washer

after blacktop

8/4/76

(17)

P.I.

426+73.20

Fd. R.R. spike in hub

Reset P.K. Nail & Washer

after blacktop

7/2/76

(16)

P.I.

400+48.95

Fd. R.R. spike in hub

Reset P.K. Nail & Washer

7/2/76

after blacktop

PERSONNEL TITLE PERSONNEL TITLE

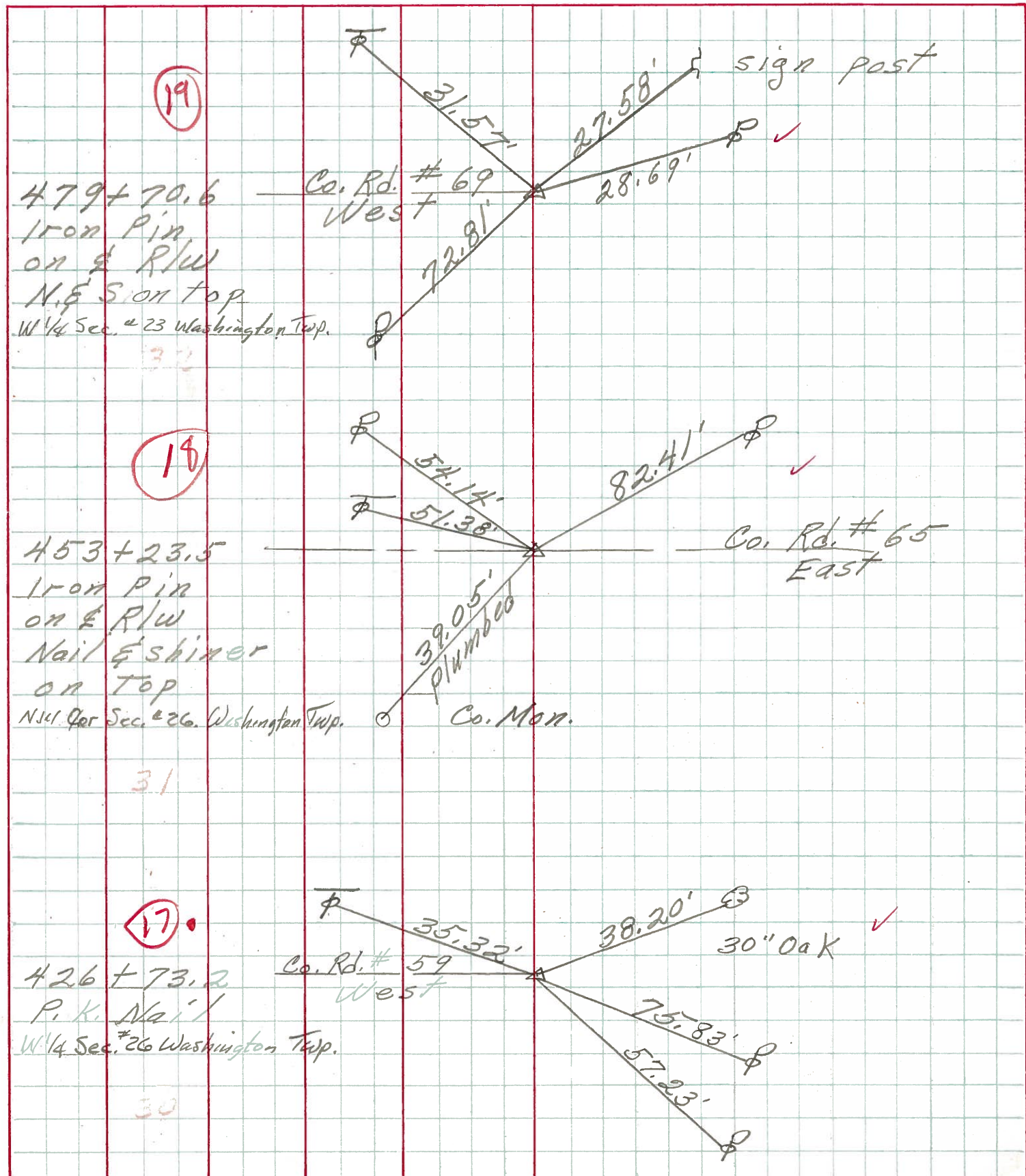
COUNTY Sandusky DATE 8-2-71

S. R. 590 WEATHER Fair

SEC. 27 & 26 TEMP. 80°

DESCRIPTION Napoleon Rd. North JOB NO. \_\_\_\_\_

LEFT CENTER LINE RIGHT

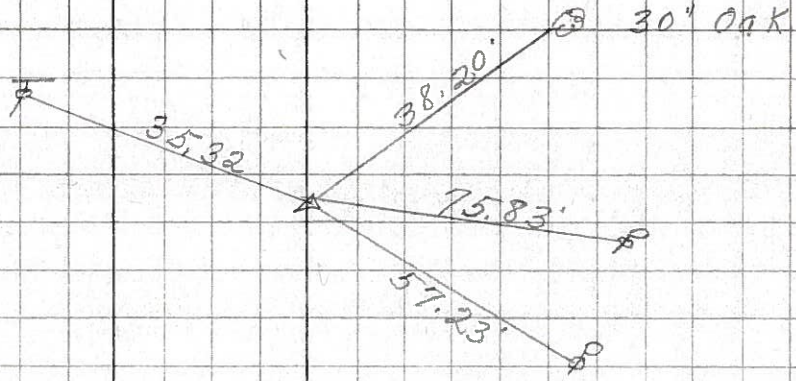


PERSONNEL	TITLE	PERSONNEL	TITLE	COUNTY	DATE	S. R.	WEATHER	TEMP.
Schneider		Potts		Sandusky	4-29-68	590	Cloudy	70°
Mosser								
Redding								
Barbott								

DESCRIPTION Ties for Control Points JOB NO. \_\_\_\_\_

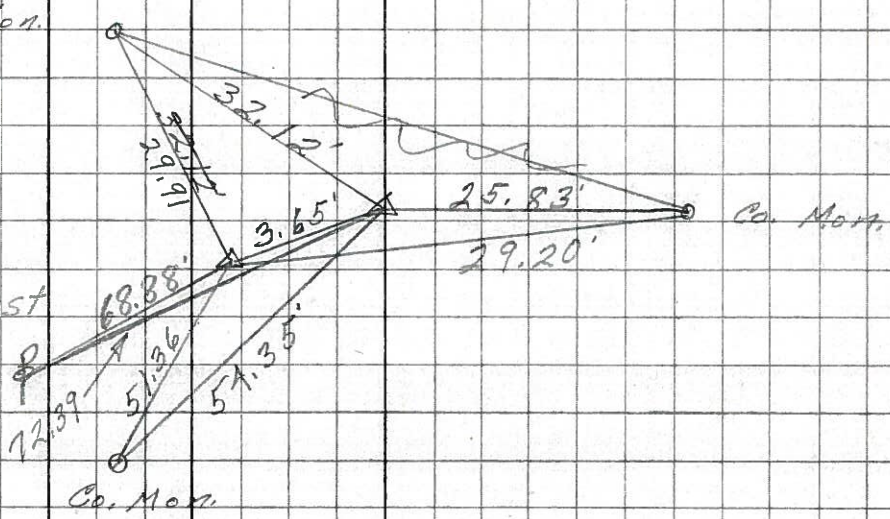
17

426+73.2  
 Twp. Rd. #59  
 set P.K. Nail  
 on surface  
 7555



16

409+48.95  
 1/2" below surface  
 Twp. Rd. #55 West  
 set 2-P.K. Nails  
 on surface  
 7554



Fd. small R.R. spike  
 Approx- 3960' N of U.S. #6  
 2" down  
 7553

