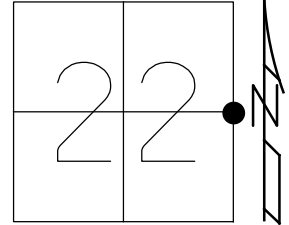


O.D.O.T. DISTRICT 2 SURVEY OFFICE (USE ONLY)

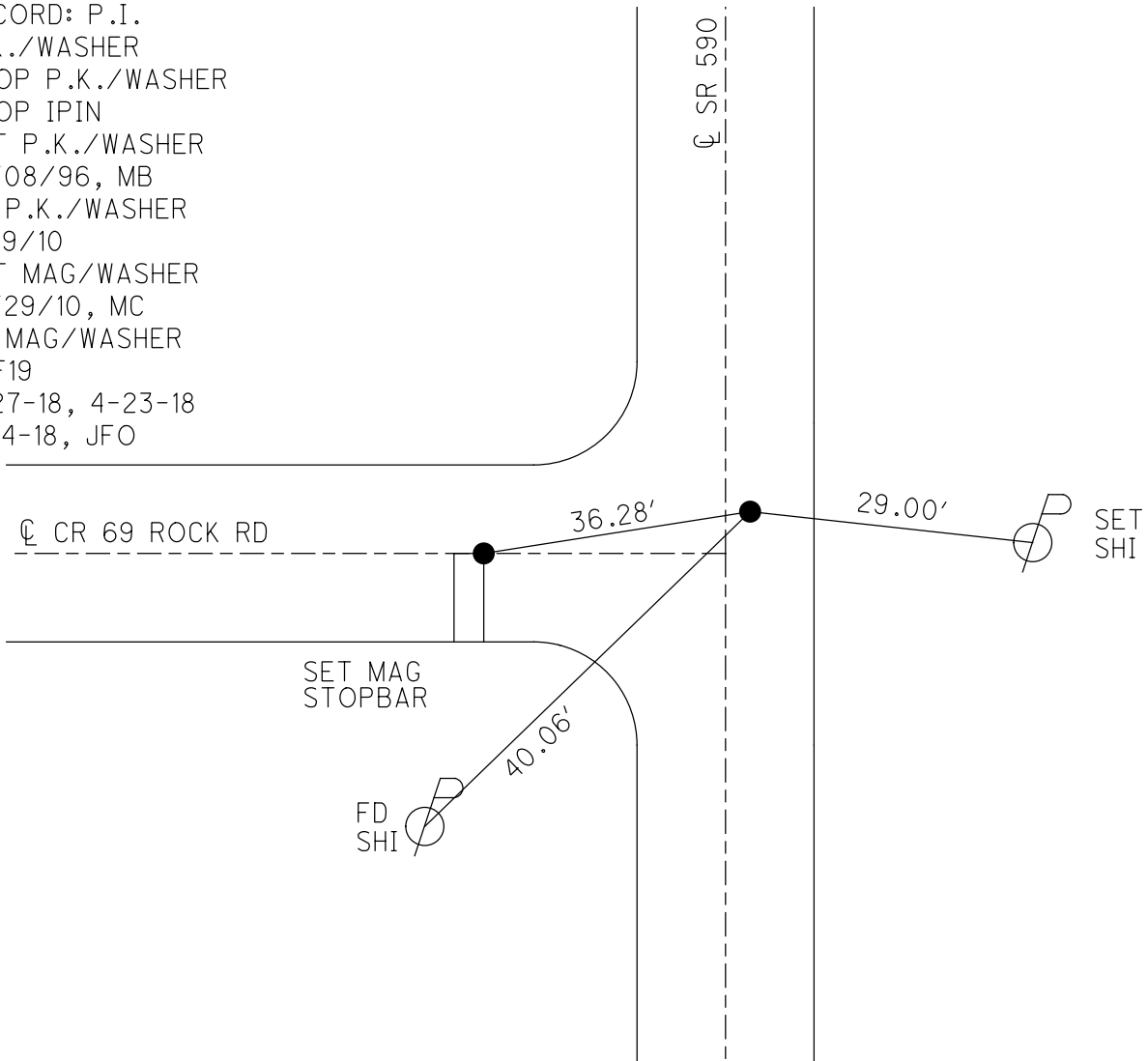
PERSONNEL \_\_\_\_\_ REFERENCE NO. 19 SHEET 31 OF 33  
 NOTES RHOADES DATE 2/27/18 ROUTE SR 590  
 H.C. O'DONNELL WEATHER SUNNY COUNTY SANDUSKY  
 R.C. SEAMAN TEMP. 42° TOWNSHIP WASHINGTON  
 DWG BY MILLER PID 101240 SECTION 22  
 T 5 N R 14 E

TYPE MONUMENT MAG/WASHER  
 ON SURFACE - ~~BELOW~~ ON  
 OFFSET ☐ PAVEMENT 1.3' ~~±~~ : RT  
9.1' TO RT EDGE PAVEMENT  
 STATION: 479+42



HORZ. DATUM: NAD83-2011 GEOID: NAVD88-2012A  
 GRID: NORTHING: 624222.699 EASTING: 1770218.554

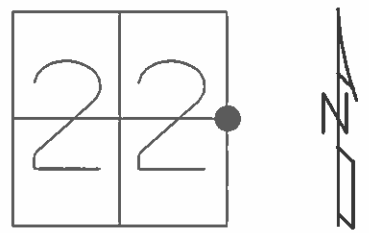
RECORD: P.I.  
 P.K./WASHER  
 ATOP P.K./WASHER  
 ATOP IPIN  
 SET P.K./WASHER  
 10/08/96, MB  
 FD P.K./WASHER  
 7/19/10  
 SET MAG/WASHER  
 10/29/10, MC  
 FD MAG/WASHER  
 REF19  
 2-27-18, 4-23-18  
 10-4-18, JFO



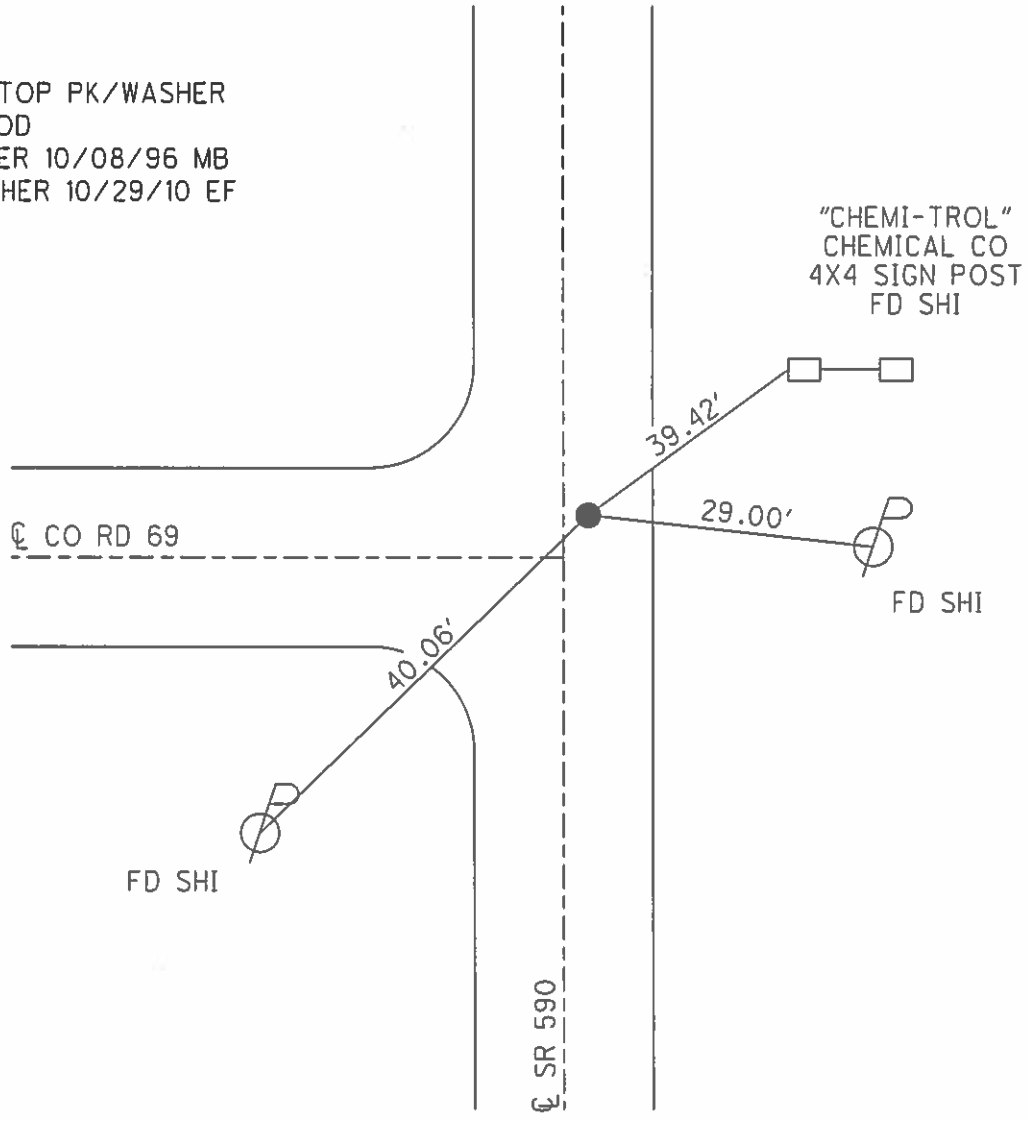
O.D.O.T. DISTRICT 2 SURVEY OFFICE (USE ONLY)

PERSONNEL \_\_\_\_\_ REFERENCE NO. 19 SHEET 30 OF 33  
 NOTES CANTERBURY DATE 11/01/10 ROUTE SR 590  
 H.C. HUSS WEATHER SUNNY COUNTY SANDUSKY  
 R.C. FINGER TEMP. +39° TOWNSHIP WASHINGTON  
 SECTION 22  
 T 5 N R 14 E

TYPE MONUMENT PK/WASHER  
 ON SURFACE - ~~BELOW~~ ON  
~~LEFT~~ - Q PAV'T - RIGHT 1.3' RT ±4' OF TR 64  
9.1' TO RT EDGE PAVEMENT  
 S.L.M. 479+42  
 GRID: NORTHING: 624222.786 EASTING: 1770218.444



RECORD: PI  
 PK/WASHER ATOP PK/WASHER  
 ATOP IRON ROD  
 SET PK/WASHER 10/08/96 MB  
 SET MAG/WASHER 10/29/10 EF



# O.D.O.T. DISTRICT 2 SURVEY OFFICE

PERSONNEL \_\_\_\_\_

REFERENCE NO. 19

SHEET 8 OF 10

NOTES BARNHISEL

H.C. ROUSOS

R.C. HAWES

DATE 8-7-96

WEATHER SUNNY

TEMP. +85°

ROUTE 590

COUNTY SANDUSKY

TOWNSHIP WASHINGTON

SECTION 22

T 5 N R 14 E

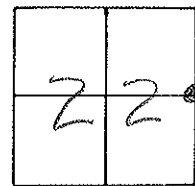
TYPE MONUMENT PK & WASHER

ON SURFACE - ~~BELOW~~ YES

~~SET~~ - Q PAV'T. - RIGHT 1.7

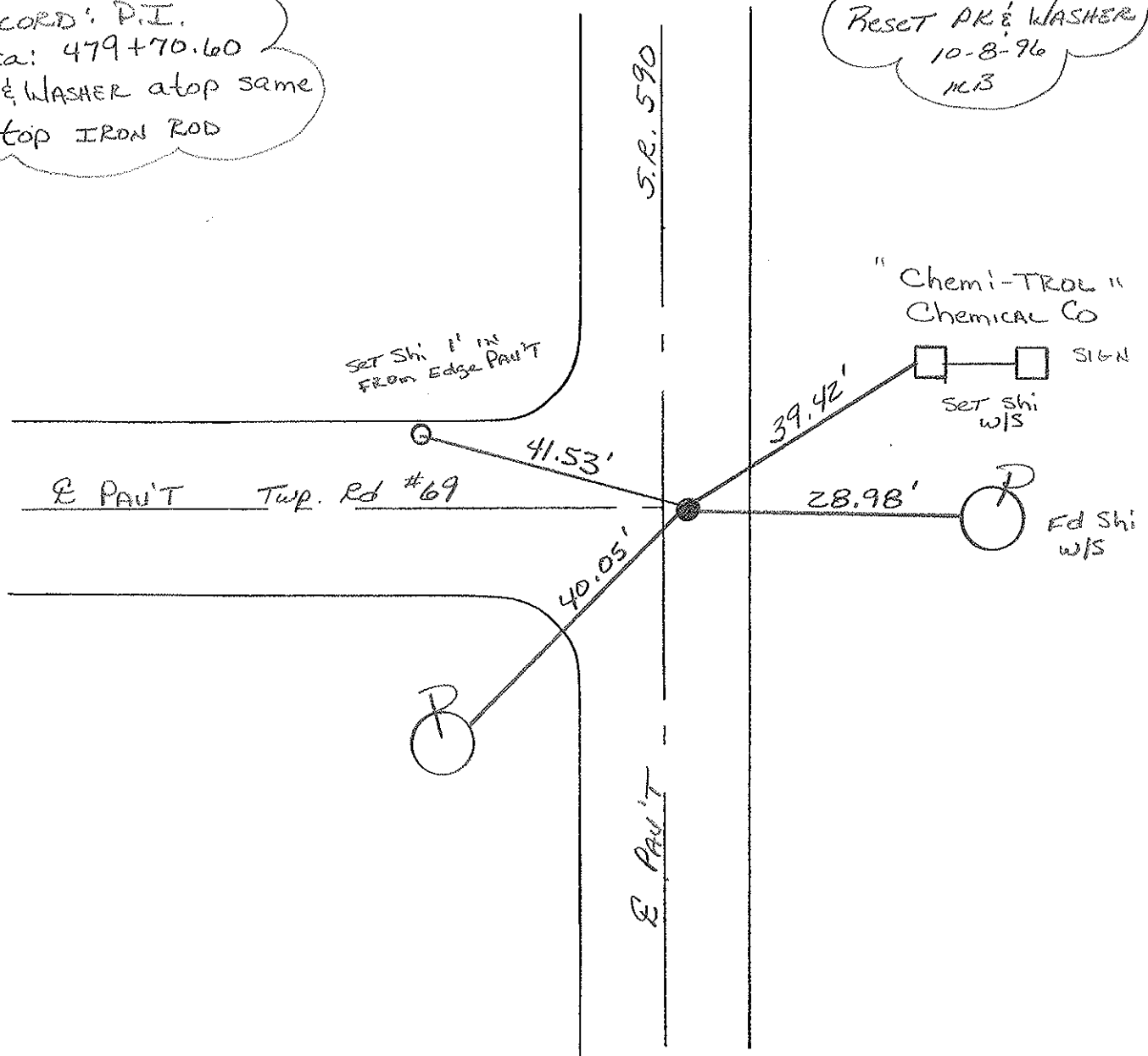
2.9 TO RT EDGE PAVEMENT

S.L.M. 479+42



RECORD: P.I.  
Sta: 479+70.60  
PK & WASHER atop same  
a-top IRON ROD

Reset PK & WASHER  
10-8-96  
HCB



O.D.O.T. DISTRICT 2 SURVEY OFFICE

PERSONNEL

REFERENCE NO. 19

SHEET \_\_\_\_\_ OF \_\_\_\_\_

NOTES Cronin

H.C. Ripple

R.C. Geyman

Barbour

DATE 8/20/86

WEATHER sunny

TEMP. 83°

ROUTE #590

COUNTY Sandusky

TOWNSHIP Washington

SECTION 22 & 23

T 5 N R 14 E

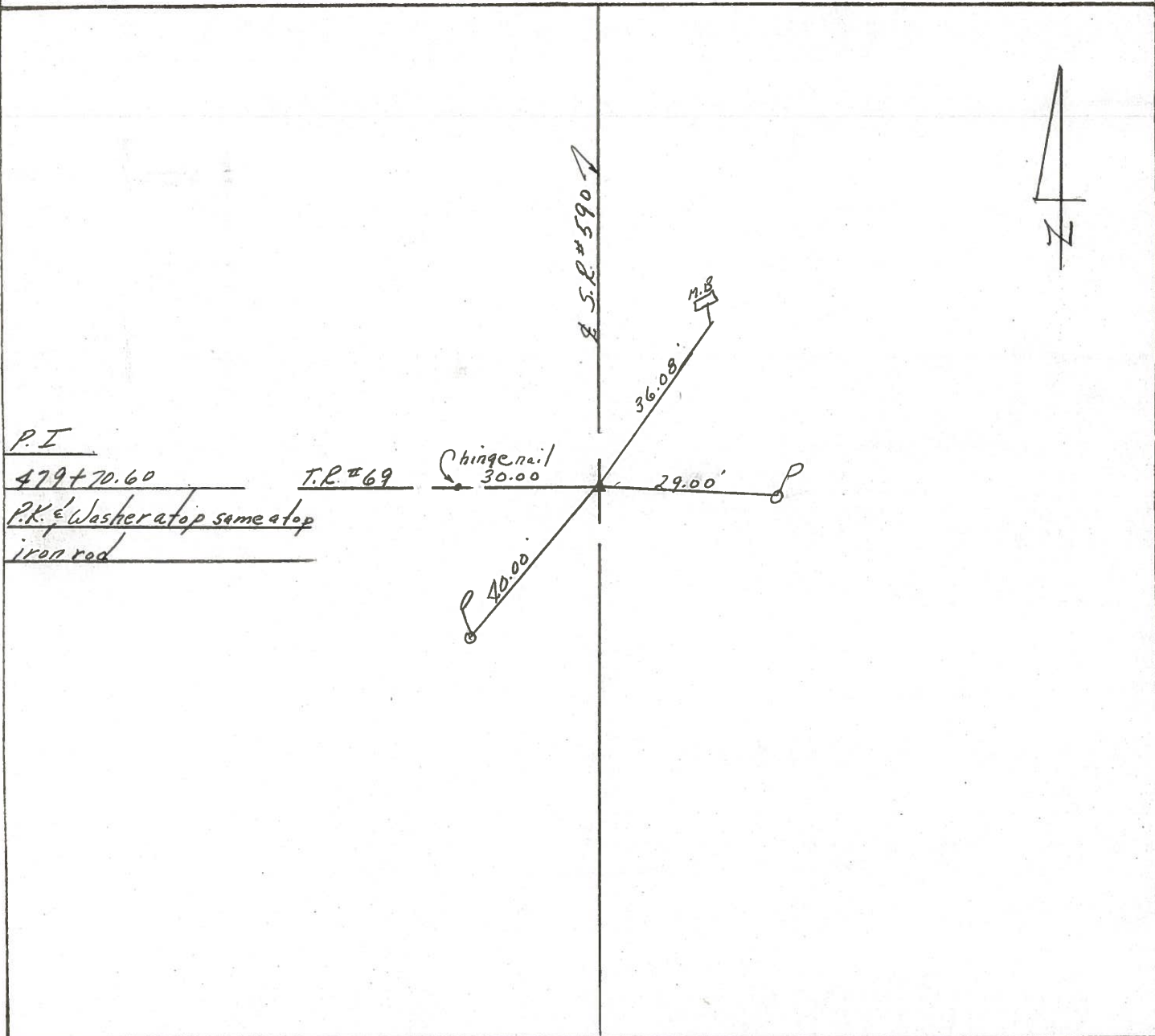
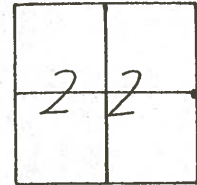
TYPE MONUMENT P.K. & washer

ON SURFACE - BELOW on surface

LEFT- & PAV'T. - RIGHT 2' Rt. & P.V.T.

TO \_\_\_\_\_ EDGE PAVEMENT

S.L.M. 9.08531



PERSONNEL TITLE PERSONNEL TITLE

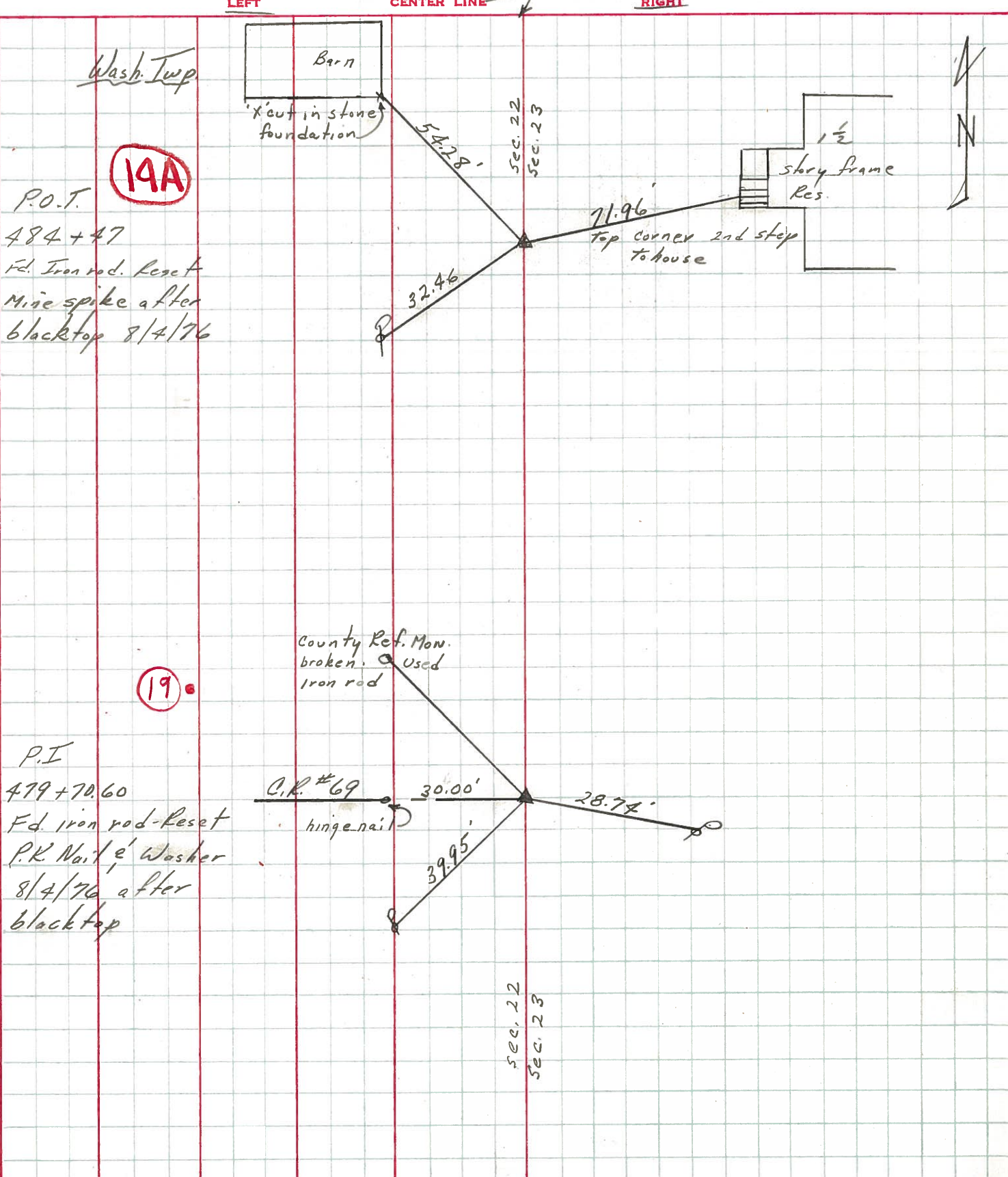
Cronin \_\_\_\_\_ Schneider \_\_\_\_\_  
Ripple \_\_\_\_\_ Mosser \_\_\_\_\_  
Geyman \_\_\_\_\_ Barbour \_\_\_\_\_

COUNTY Sandusky DATE 8/4/76

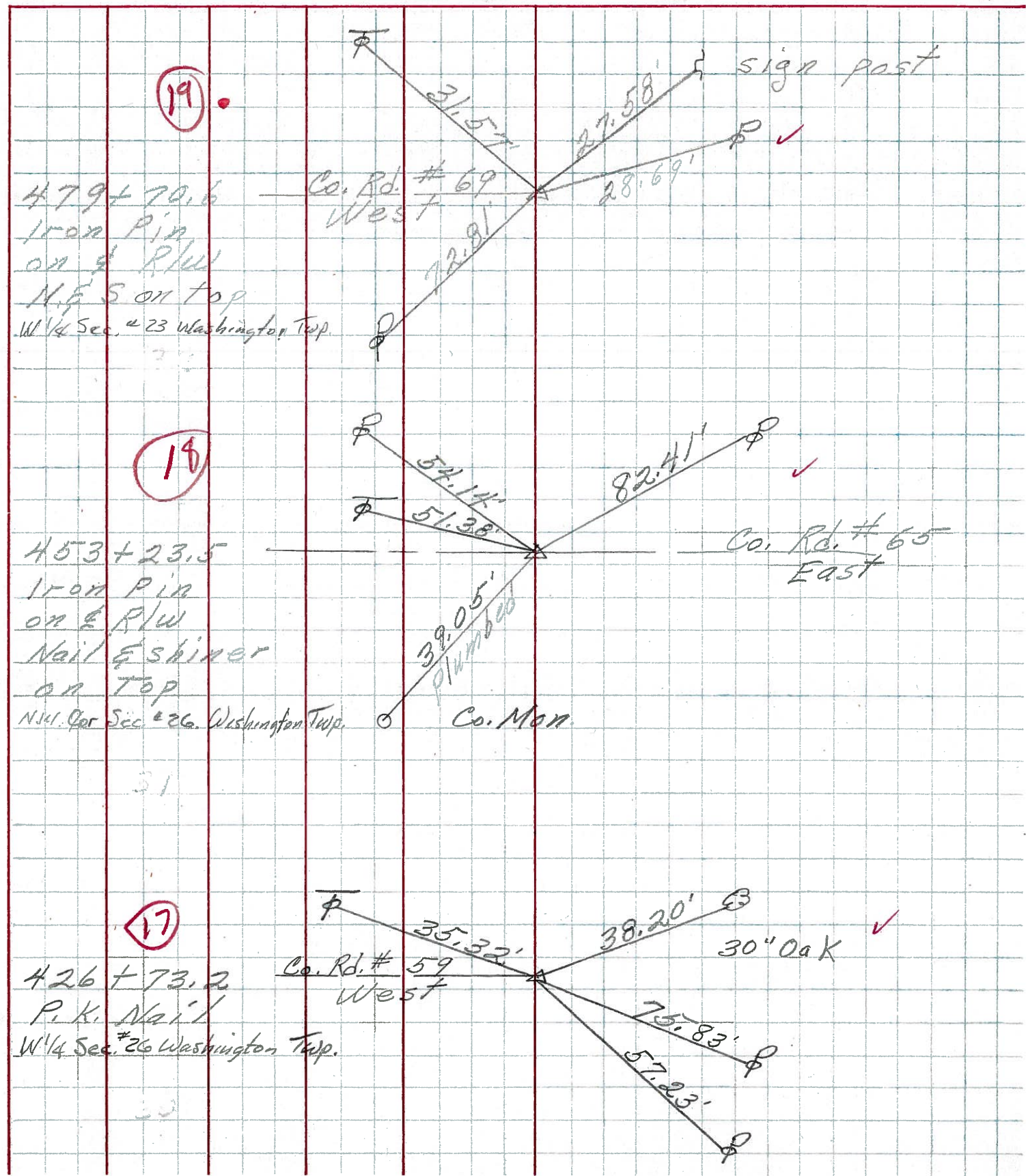
S. R. #590 WEATHER sunny

SEC. U.S #6 to U.S #20 TEMP. 70°

DESCRIPTION Ties for Control Points - Ref. Field Bk # 5a. 55 JOB NO. \_\_\_\_\_



PERSONNEL TITLE PERSONNEL TITLE COUNTY Sandusky DATE 8-2-71  
 S. R. 590 WEATHER Fair  
 SEC. 27 & 26 TEMP. 80°  
 DESCRIPTION Napoleon Rd. North JOB NO.



PERSONNEL	TITLE	PERSONNEL	TITLE	COUNTY	DATE	WEATHER	TEMP.
Schneider		Potts		Sandusky	4		
Mosser				S. R. 590			
Barbour				SEC. U.S. #6 North			
Redding							

DESCRIPTION Ties for Control Points LEFT CENTER LINE RIGHT JOB NO.

